



National Great Rivers Research & Education Center

NGRREC

(én-grek)

John Sloan, Ph.D.

Watershed and Soil Scientist



East Alton
Madison County





NGRREC – A Brief History



Lewis & Clark
Community College

Dr. Dale Chapman



University of Illinois

Natural Resources and
Environmental Sciences

Dr. Gary Rolfe*, Director
Dr. Dick Warner, Sr. Scientist



Prairie Research
Institute

Illinois Natural History
Survey



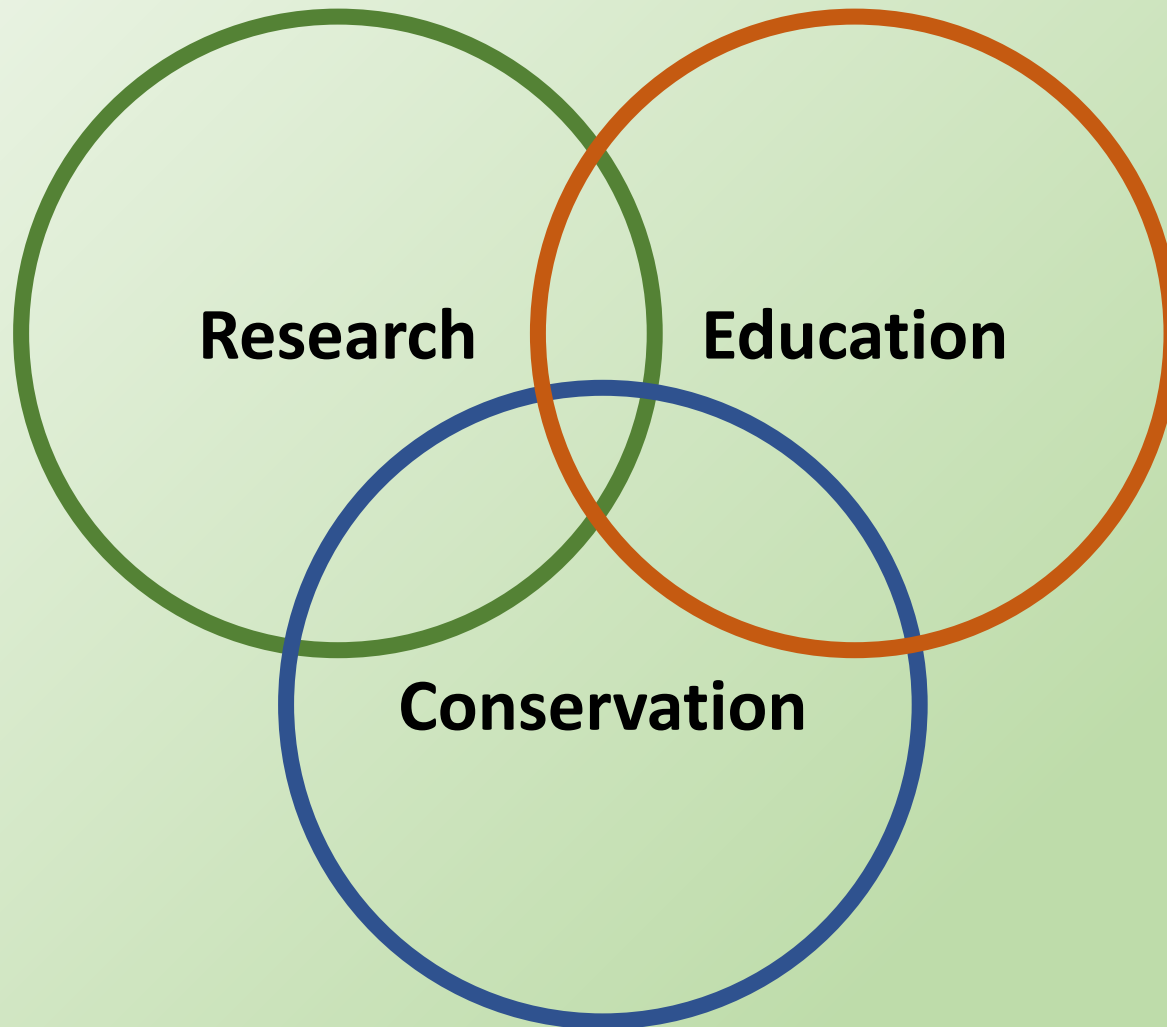
NGRREC – Our Mission

The center's scholars and scientists study the ecology of the big rivers, the workings of the watersheds that feed them, and the ties to the river communities that use them.

Working towards sustainable river systems



Three branches of NGRREC





Research

- Terrestrial (Forest) Ecology – Dr. Lyle Guyon
- Watershed Science – Dr. John Sloan
- Wildlife Ecology – Dr. John Crawford
- Community Ecology – Dr. Tony Dell
- Aquatic Ecology – Dr. Danelle Haake
- Ornithology – Dr. Justin Shew



Education

Director - Sarah Fisher

Riverwatch Director - Danelle Haake

Environmental Educator - TBD

Programs

- Project WET
- Swarovski Water School
- Mississippi River Xchange
- Summer Internship
- Water Festival
- Neighbor Nights
- Brewers and Biologists



Conservation

Director – Dr. Justin Shew

Habitat Project Coordinator - Cody Berry

Habitat Senior Project Assistant - Lindsay Griggs

- Habitat Strike Team
 - Illinois Recreational Access Program (IRAP)
 - Grant to Restore Habitat for Wildlife and Provide Lewis and Clark Student Training
- Land Conservation Specialist Program (4 specialists)
 - Provides technical assistance to landowners enrolled in USDA Farm Bill conservation programs

Illinois RiverWatch Program

Copyright (c) 2014 The National Great Rivers Research and Education Center





NGRRECsm Signature Programs

- Great Rivers Ecological Observatory Network (GREONsm)
 - A series of water quality monitoring platforms strategically placed on the Mississippi River or its tributaries.
- Great Lakes to Gulf (GLTGsm) Virtual Observatory
 - A website for visualizing water resources data from the Mississippi River Basin aggregated across various sources.



GREON



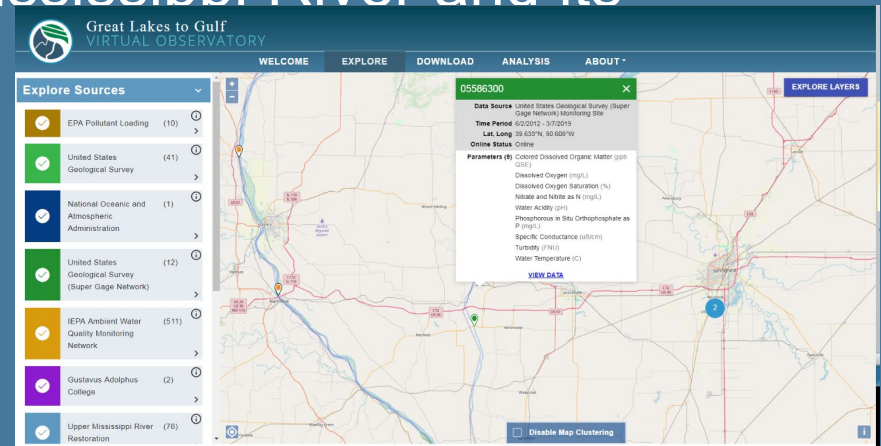
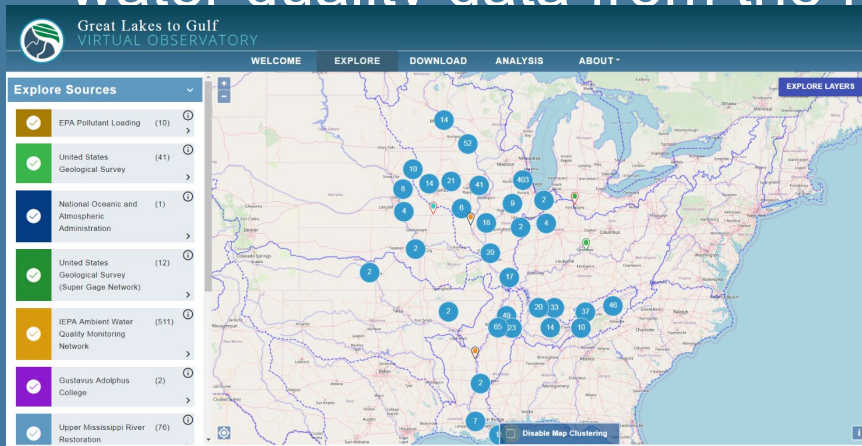
Temp
Dissolved O2
Specific cond.
Turbidity

Chlorophyll
Blue-green algae
Fluorescent DOM
Nitrate



What is the Great Lakes to Gulf Virtual Observatory?

- A web-based geospatial application that integrates water quality data and analytical tools from multiple sources allowing a user to visualize and understand nutrient pollution and water quality conditions in the Mississippi River watershed.
- Provides users with tools to explore, analyze and compare water quality data from the Mississippi River and its



Confluence Field Station

LEED Certified – Gold

- Green roof
- Porous Pavement
- Onsite wastewater treatment
- Stormwater capture and reuse

