



# URBAN STORMWATER WORKING GROUP

MEETING 1: JULY 20, 2015

# Introductions

Any important missing entities?



Photo by John R. Hamilton, "Water Is..." Photo Contest

# Today's goals

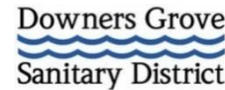
- Review
- Set priorities

# Policy Working Group Participation in NLRs Development

## Agriculture



## Point Source



## Environmental



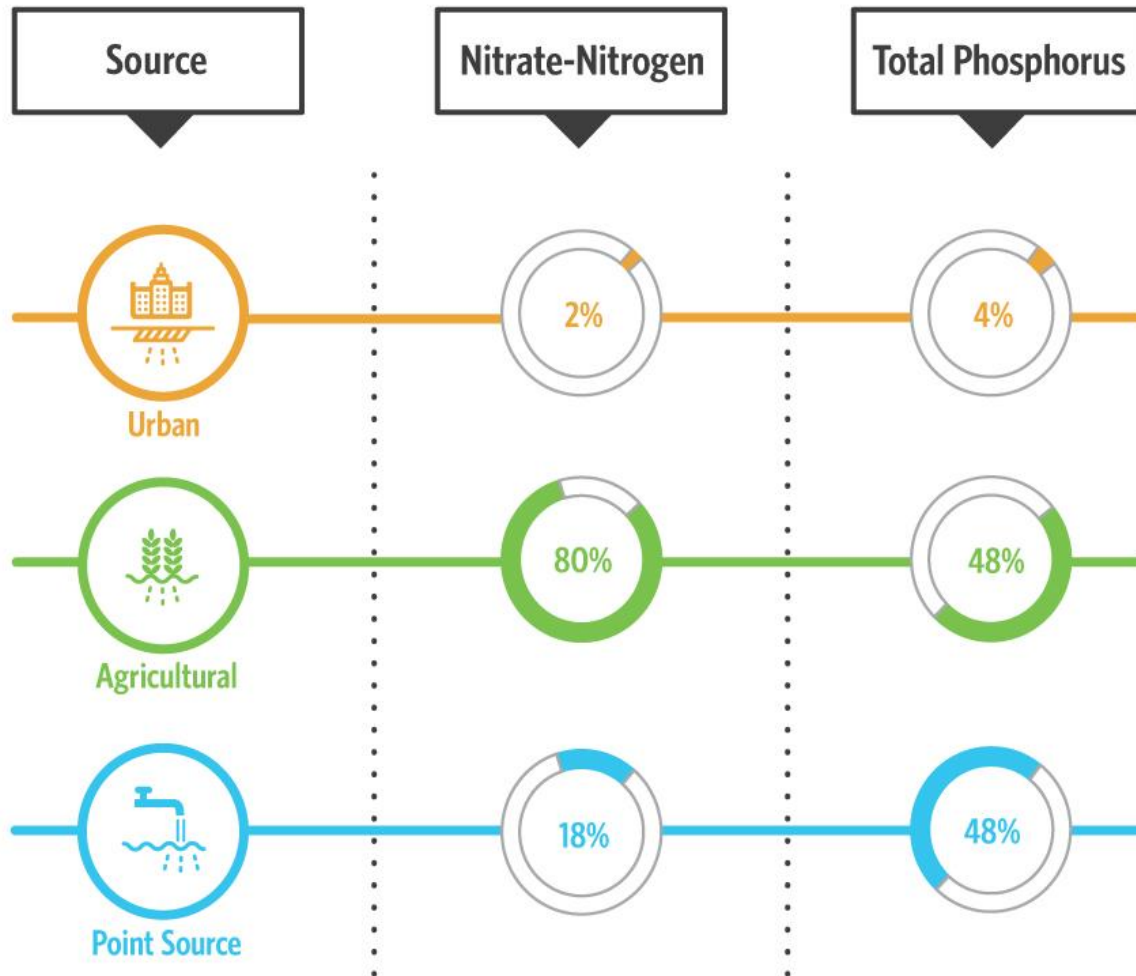
## University/Technical Assistance



## Government



# Nutrient Contributions by Source



Source: Illinois Nutrient Loss Reduction Strategy, Science Assessment

# History: USWG Conclusions (Feb 2014)

- Small statewide, but in urban watersheds it's locally important.
- Reducing volume reduces nutrient load, therefore Green Inf.
- We need a way to connect existing initiatives and identify gaps.
- Public outreach important to create community will.
- Changes needed to improve stormwater:
  - 1. Funding (State Revolving Loan funding passed)
  - 2. Legislative initiatives
  - 3. MS4 permit requirements

# History: Current programs & projects (in NLRS)

- Section 319
- MS4 Permits
- Clean Water Initiative and State Revolving Fund
- Illinois Green Infrastructure Grant
- Rain Barrel Programs
- Streambank Stabilization and Restoration Program
- Total Maximum Daily Load
- Calumet Stormwater Collaborative
- Others?

# History: Future regulatory actions (in NLRS)

- Illinois EPA Monitoring Program
- Illinois EPA MS4 permit revision requiring discharge monitoring
- Illinois Technical Assistance for Municipalities
- Post-Development Stormwater Performance Standard
- Others?



# History: Future strategic actions (in NLRS)

- Urban Stormwater Working Group
- Illinois EPA to encourage Planning
- Storm sewer system mapping
- Illinois EPA community employee training
- Others?

# Development of NLRs document

Illinois Environmental Protection Agency

[CONTACT US](#) [SERVICES MAP](#) [FORMS](#)



[Citizens](#) [Business](#) [Government](#) [Educators](#) [About IEPA](#)

Search

## Public Comment Period for Illinois Nutrient Loss Reduction Strategy

[Home](#) / [Topics](#) / [Water Quality](#) / [Watershed Management](#) / [Excess Nutrients](#)  
/ [Nutrient Loss Reduction Strategy](#)

Public comments on the draft Illinois Nutrient Loss Reduction Strategy were taken from November 24, 2014 through January 25, 2015.

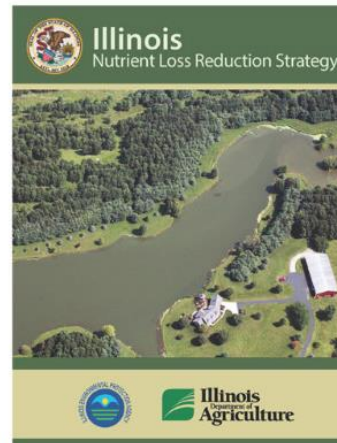
Below are the comments received by the Illinois EPA in response to the draft Strategy.

[Comments 1](#)

[Comments 2](#)

[Comments 3](#)

The Illinois Nutrient Loss Reduction Strategy guides state efforts to improve water quality at home and downstream by reducing nitrogen and phosphorus levels in our lakes, streams, and rivers. The strategy lays out a comprehensive suite of best management practices for reducing nutrient loads from wastewater treatment plants and urban and agricultural runoff. Recommended activities target the state's most critical watersheds and are based on the latest science and best-available technology. It also calls for more collaboration between state and federal agencies, cities, non-profits, and technical experts on issues such as water quality monitoring, funding, and outreach.



### SECTION NAVIGATION

[Go Back](#)

### FIND SERVICES

- VIM Testing Station
- Medication Disposal Locations
- E-Waste Collection Sites
- Hazardous Waste Collection Sites

Within 10  miles of

Address or City or ZIP



# Current Status



**ILLINOIS**  
NUTRIENT LOSS  
REDUCTION STRATEGY



# Policy Working Group participation for Implementation

## Agriculture



## Point Source



## Stormwater



## Public Water Supply



## University/ Technical Assistance



## Government



## Environmental



# NLRS Implementation Committees

- 1) Policy Working Group
- 2) Nutrient Monitoring Council
- 3) Nutrient Science Advisory Committee
- 4) Agriculture Water Quality Partnership Forum
- 5) Urban Stormwater Working Group
- 6) Potentially, Point Source Working Group. TBD at Policy Working Group meeting

# NLRS Committee Charges

## 1) Policy Working Group (Aug 4)

- Steer implementation of the strategy.
- Consider policy issues emerging from public comments.
- Explore funding opportunities.
- Identify needed legislative initiatives.
- Identify adaptive management adjustments and update the strategy.

# NLRS Committee Charges

## 2) Nutrient Monitoring Council (May 13)

- Develop a nutrient monitoring program (i.e., program design, data collection and methods, data analysis, quality assurance, reporting, evaluation).
- Develop a prioritized list of nutrient monitoring program activities and associated funding needed to accomplish the charges/goals.

# NLRS Committee Charges

## 3) Nutrient Science Advisory Committee (Sep 16)

- Determine the numeric criteria for nutrients most appropriate for Illinois waterbodies based on the best science available.
- Consider whether standard should be statewide or watershed specific.



# NLRS Committee Charges

## 4) Agriculture Water Quality Partnership Forum (Sep)

- Steer and coordinate outreach and education efforts to help farmers address nutrient loss and select the most appropriate BMPs:
  - Identify needed education initiatives or training requirements for farmer and technical advisors.
  - Strengthen connections between industry initiatives, certified crop advisor continuing education requirements, state initiatives, and other technical services.
- Track BMP implementation
- Coordinate cost sharing and targeting
- Develop other tools as needed
  - Consider an agriculture water quality certification program.

# NLRS Committee Charges

## 5) Urban Stormwater Working Group

- Explore funding, identify legislative initiatives, and develop plans.
- Coordinate outreach.
- Orchestrate statewide efforts related to green infrastructure expansion, MS4 program training, and urban stream, lake, and stormwater monitoring.

# NLRS Committee Charges

## 5) Urban Stormwater Working Group

- Explore funding, identify legislative initiatives, and develop plans.
- Coordinate outreach.
- Orchestrate statewide efforts related to green infrastructure expansion, MS4 program training, and urban stream, lake, and stormwater monitoring.

# Explore funding, identify legislative initiatives, and develop plans.

- Funding
  - Stormwater Utilities? (Feb 2014)
  - IEPA lack of staff? (Feb 2014)
- Legislative and regulatory initiatives needed
  - Enabling legislation to allow all counties to establish SWUF (December 2013 meeting)
- Develop action plans

# NLRS Committee Charges

## 5) Urban Stormwater Working Group

- Explore funding, identify legislative initiatives, and develop plans.
- **Coordinate outreach.**
- Orchestrate statewide efforts related to green infrastructure expansion, MS4 program training, and urban stream, lake, and stormwater monitoring.

# Agriculture Sector Outreach and Education

- Newsletter articles
- Direct correspondence
- Meetings with members
- 11 Roadshows
- Social media
- Connecting NLRs to existing programs
- Robocalls

# Ag Sector Coordinated Communication



Photo by Marilyn Sanders

## “Water is...” Photo Contest



**ILLINOIS**  
NUTRIENT LOSS  
REDUCTION STRATEGY

Improving our water resources with  
collaboration and innovation

# Ag Sector Coordinated Communication



“The Science of the Strategy” video series



# Outreach and Education: Discussion

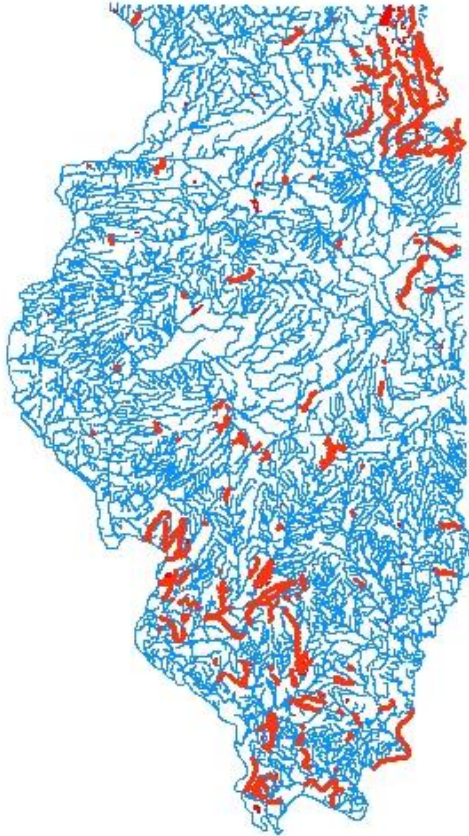
- Urban stormwater efforts?
  1. Should we develop our own outreach effort? (e.g. Watershed Heroes from Feb 2014)
  2. Do we develop collective training to provide MS4 communities? (from Feb 2014)
  
- Do we develop new or expand existing tools?
- How do we connect existing initiatives?
- What are the gaps?



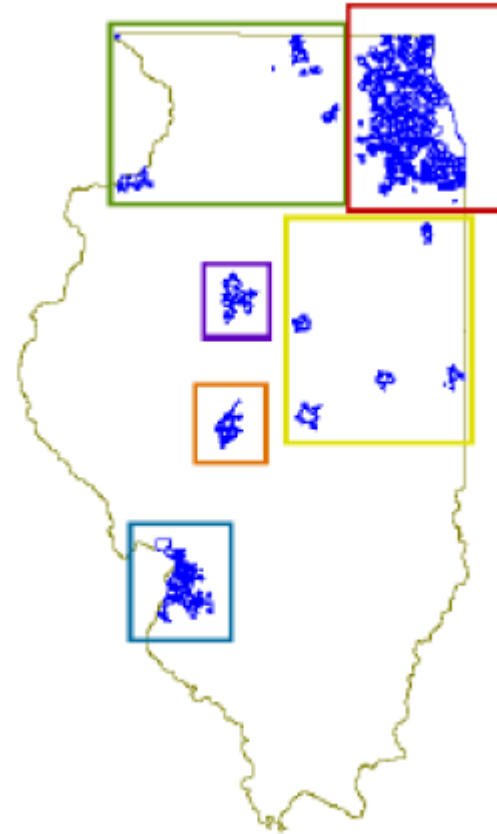
Photo by: Jennifer Byard

# Outreach and Education: Discussion

## Where/what should we focus on?



2014 stream impairment due to urban runoff



MS4s

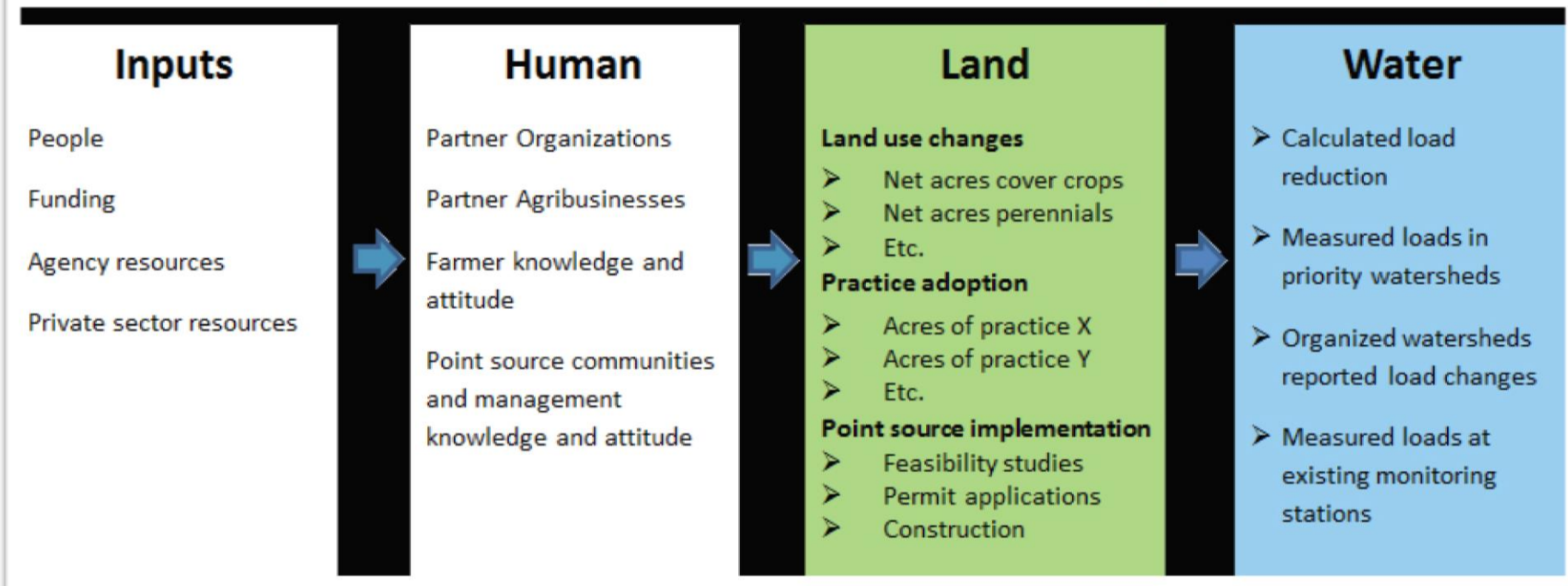
# NLRS Committee Charges

## 5) Urban Stormwater Working Group

- Explore funding, identify legislative initiatives, and develop plans.
- Coordinate outreach.
- Orchestrate statewide efforts related to green infrastructure expansion, MS4 program training, and urban stream, lake, and stormwater monitoring.

# Tracking BMP Implementation – Iowa Example

## Measurable indicators of desirable change



*Source: Iowa State University, Extension and Outreach, Measures of Success Committee*

# Tracking BMP Implementation

- Resource Management Mapping Service
- MS4 Reporting
- GIS location data
- BMP Baseline
  - Recommendation to Policy Working Group and AWQPF Tech group
- Coordination with Nutrient Monitoring Council

# Next Steps

- How to manage progress on the charge?
- *Next meeting?*

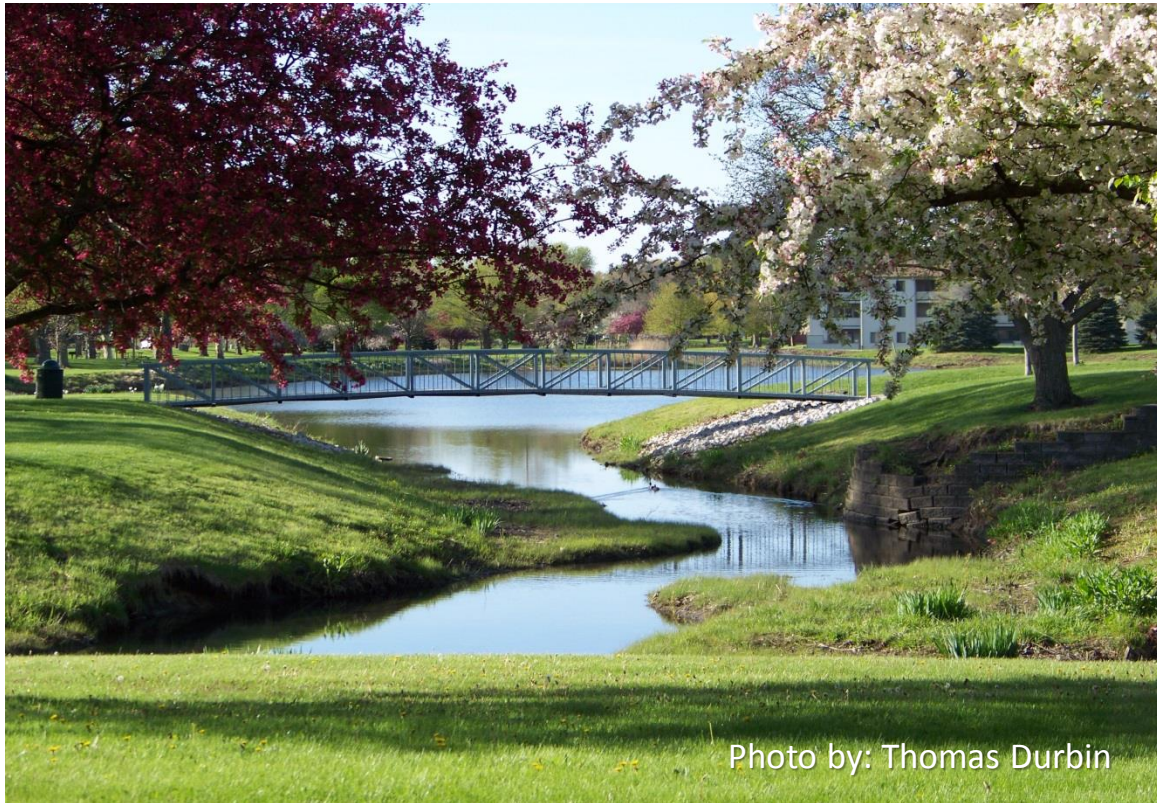


Photo by: Thomas Durbin



# THANK YOU!



*Photo by Jeremy Tiemann*