

# POLICY WORKING GROUP

IMPLEMENTATION KICKOFF MEETING  
AUGUST 4, 2015

# Introductions

## **Point Source**

Rick Manner Kay Anderson Nick Menninga Tom Granato Randy Stein  
David St. Pierre Alec Davis Brenda Carter

## **Agriculture**

Tim Maiers Howard Brown Liz Hobart Jennifer Tirey Lauren Lurkins (Bill Bodine)  
Jean Payne Rodney Weinzierl Dick Lyons Kelly Thompson

## **Stormwater**

Eric Schoeny Dale Schepers

## **Drinking Water Supply**

Ted Meckes Kevin Culver

## **University/Technical Assistance Providers**

George Czapar Mark David Greg McIsaac Emerson Nafziger Gary Schnitkey

## **Environmental Groups**

Albert Ettinger Kim Knowles Brad Klein Cindy Skrukrud

## **Government**

Marcia Willhite Warren Goetsch Kerry Goodrich

# Development of NLRs document

Illinois Environmental Protection Agency

[CONTACT US](#) [SERVICES MAP](#) [FORMS](#)



[Citizens](#) [Business](#) [Government](#) [Educators](#) [About IEPA](#)

Search

## Public Comment Period for Illinois Nutrient Loss Reduction Strategy

[Home](#) / [Topics](#) / [Water Quality](#) / [Watershed Management](#) / [Excess Nutrients](#)  
/ [Nutrient Loss Reduction Strategy](#)

Public comments on the draft Illinois Nutrient Loss Reduction Strategy were taken from November 24, 2014 through January 25, 2015.

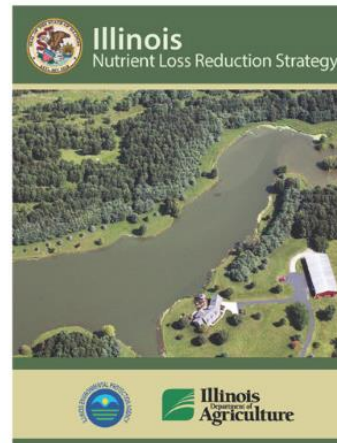
Below are the comments received by the Illinois EPA in response to the draft Strategy.

[Comments 1](#)

[Comments 2](#)

[Comments 3](#)

The Illinois Nutrient Loss Reduction Strategy guides state efforts to improve water quality at home and downstream by reducing nitrogen and phosphorus levels in our lakes, streams, and rivers. The strategy lays out a comprehensive suite of best management practices for reducing nutrient loads from wastewater treatment plants and urban and agricultural runoff. Recommended activities target the state's most critical watersheds and are based on the latest science and best-available technology. It also calls for more collaboration between state and federal agencies, cities, non-profits, and technical experts on issues such as water quality monitoring, funding, and outreach.



### SECTION NAVIGATION

[Go Back](#)

### FIND SERVICES

- VIM Testing Station
- Medication Disposal Locations
- E-Waste Collection Sites
- Hazardous Waste Collection Sites

Within 10  miles of

Address or City or ZIP



# Current Status *(Marcia Willhite)*



**ILLINOIS**  
NUTRIENT LOSS  
REDUCTION STRATEGY





# Summary of Public Comments and Decisions (*Marcia Willhite*)

- Changes made in Strategy in response to comments
- Items requiring PWG consideration and action
- Observations/Opinions
- Programmatic actions for Illinois EPA



*Yingkai Liu, Water Is Photo Contest*

# Changes made in NLRS in response to comments



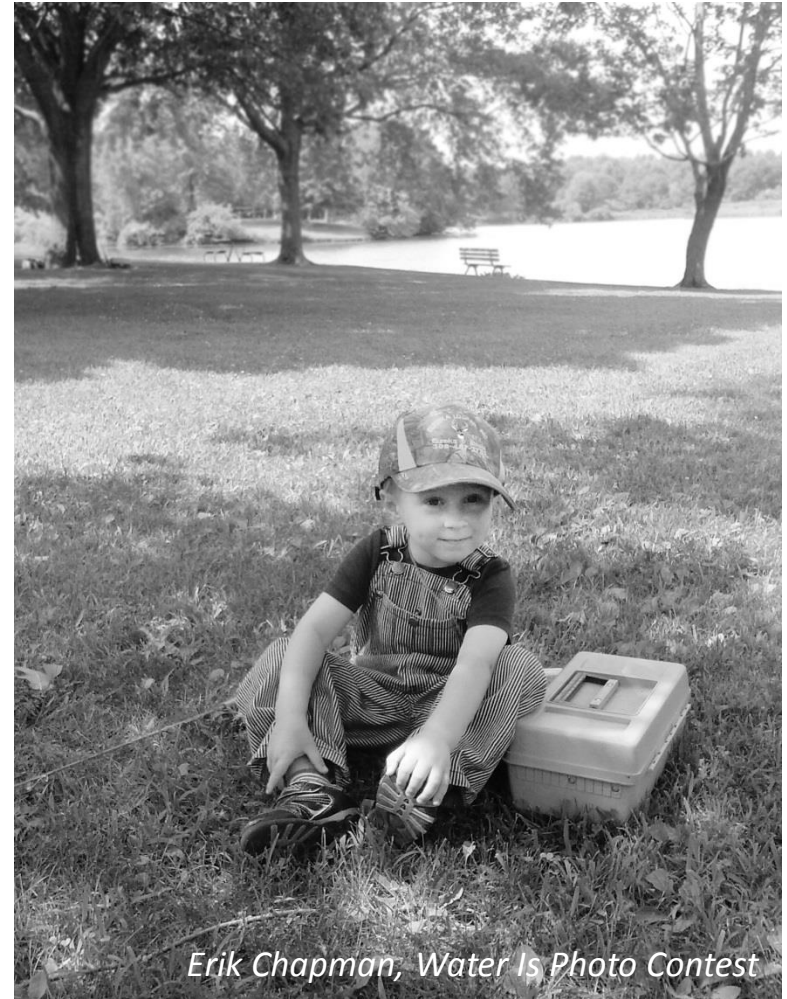
*Yingkai Liu, Water Is Photo Contest*

- Groundwater Appendix
- Wetland effectiveness
- Cost for nutrient removal by point sources
- Permit limits for local water quality impact, feasibility study for hypoxia contribution
- Nutrient reduction goals in pounds per year by source
- Clarifications of priority watersheds



# Items requiring Policy Working Group consideration and action

- Implementation benchmarks
- Goal date for achieving 45% reduction in N and P
- Exploring the establishment of a watershed protection utility
- Establishing an Agronomic Technical Advisory Team
- Trading/offsets between NPS and PS



*Erik Chapman, Water Is Photo Contest*



# Policy Working Group Participation in NLRS Development

## Agriculture



## Point Source



## Environmental



## University/Technical Assistance



## Government





# Policy Working Group participation for Implementation

## Agriculture

## Point Source

## Stormwater

## Public Water Supply

## Government

## Environmental

## University/ Technical Assistance



IMPLEMENTATION ACTIONS AND INITIATIVES BY SECTOR

# ENVIRONMENTAL – *CINDY SKRUKRUD*

IMPLEMENTATION ACTIONS AND INITIATIVES BY SECTOR

# POINT SOURCE – *THOMAS GRANATO*



IMPLEMENTATION ACTIONS AND INITIATIVES BY SECTOR

# **AGRICULTURE – *JENNIFER TIREY***

IMPLEMENTATION ACTIONS AND INITIATIVES BY SECTOR

# UNIVERSITY – *ELIANA BROWN*

# “Water is...” Photo Contest



Photo by Marilyn Sanders

40 entries from all over IL



# Youth Photo Contest



## GIVE US YOUR BEST SHOT!

### "WATER IS" PHOTO CONTEST

"SAY CHEESE!"



#### Contest

The Illinois Water Resources Center's (IWRC) "Water Is" photo contest will recognize young Illinois photographers who have captured what water means to them, their communities, and the state. Winning images will be featured in IWRC publications promoting the Illinois Nutrient Loss Reduction Strategy, a new state plan to improve local and regional water quality.

<http://1.usa.gov/1JUkPk7>

#### CONTEST DIVISIONS

13 and under	14-17
--------------	-------

#### Eligibility

The contest is open to the public. Entrants must be aged 17 or under at the time of entry. If the entrant is under 16, they must have their parent's or legal guardian's consent to participate. All participants may submit no more than five images. All entries must be original work. Previously published material may be entered as long as the submission includes the date and name of the publication.

#### Conditions

A panel of judges will select first place and honorable mention winners. The photographer retains full copyright to his or her images. However, participation in the contest requires the contestant give IWRC unrestricted use of all submitted photos and accompanying materials and the right to use all entries in any future online and print materials. Photographers assume responsibility for obtaining consent from any persons appearing in their photograph prior to submission.

#### How To Enter

##### In your email:

- Explain what is happening in the photo.
- Identify the location and date the image was taken (including the name of the waterbody if applicable).

##### Your entry:

- Should be submitted as high-resolution JPEG (No larger than 8.0 MB). Please resize so that the longest dimension is 1500 pixels.
- Should not be digitally altered. Minor adjustments (such as cropping, color adjustment, etc.) are permitted.
- Filename must include the full name of the contestant.

**SUBMIT ALL ENTRIES BY**  
**5PM, FRIDAY**  
**OCTOBER 16**

**E-MAIL SUBMISSIONS TO**  
[vfiquer2@illinois.edu](mailto:vfiquer2@illinois.edu)

<http://go.illinois.edu/youthphotocontest>

# “The Science of the Strategy” video series



<http://go.illinois.edu/scienceofthestrategy>

# NLRS Implementation Workgroups, Forums, & Councils

- 1) Nutrient Monitoring Council (May 13 & Sept. 16)
- 2) Ag. Water Qual. Partnership Forum (May 22)
  - AWQPF Tech Committee (Aug. 26)
- 3) Urban Stormwater Working Group (July 20)
- 4) Policy Working Group (Aug. 4)
- 5) Nutrient Science Advisory Committee (select in Aug.)



Status of NLRs Implementation Workgroups, Forums, and Councils

# NUTRIENT MONITORING COUNCIL

*FIRST MEETING: MAY 13, 2015*

*Co-Chairs: Gregg Good, Illinois EPA*

*Mark David, University of Illinois*



*Gregg Good, Illinois EPA*

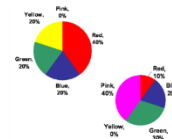
# NMC MEMBERS

Gregg Good, Illinois EPA-Surface Water  
Mark David, University of Illinois  
Doug Yeskis, U.S. Geological Survey  
Ann Holtrop, Illinois DNR  
Laura Keefer, Illinois State Water Survey  
Marvin Hubbell, U.S. Army Corp of Engineers-Rock Island  
Richard Berg, Illinois State Geological Survey  
Rick Cobb, Illinois EPA-Groundwater  
Jill Kostel, The Wetlands Initiative  
Tom Granato, MWRDGC  
Cindy Skrukrud, Sierra Club  
Laura Gentry, Illinois Corn Growers Association  
Andrew Casper, Illinois Natural History Survey  
Michael Brennan, NGRREC/Illinois-Indiana Sea Grant



# NMC Charge

1. Develop a *nutrient monitoring program* (e.g., program design, data collection and methods, data analysis and assessment, QA, reporting, evaluation) that, *if implemented*:
  - a. Collects the necessary information to generate estimations of *5-yr running avg.* loads of *Nitrate-Nitrogen and Total Phosphorus* leaving the state of IL *and* selected high priority watersheds (e.g., 8-digit HUC basins).
  - b. Identifies *trends in loading over time* as compared to 1980-1996 baseline conditions.
2. Develop a *prioritized list of nutrient monitoring program activities and associated funding needed* to accomplish the charges/goals listed in a. and b.
3. Document *“local water quality outcomes”* (good or bad....hopefully good) on a *smaller priority watershed scale* where future nutrient reduction efforts are being implemented (e.g., bugs and fish got happier now than before; fewer documented WQ standards violations; fewer algal blooms or offensive conditions; decline in nutrient, chloride, or bromide concentrations in groundwater).



# 8-Super Station Network

(NMC Charges 1a and 1b)

- *Illinois Nutrient Loss Reduction Strategy* need for “accountability”
- Continuously Recorded Parameters
  - Nitrate, Phosphate, Turbidity, D.O., Temp, pH, Spec. Cond.
- Stations (73% of IL land area)
  - Rock, Green, Illinois, Vermillion (Danville), Embarras, Kaskaskia, Little Wabash, Big Muddy
- Annual Nutrient Load Exports
- Agreement 4/1/15 – 3/31/21

## Nutrient and Sediment Export from Illinois—Quantification through a Continuous Loadings Network to Support the Illinois Statewide Nutrient Loss Reduction Strategy



Prepared for  
Illinois Environmental Protection Agency

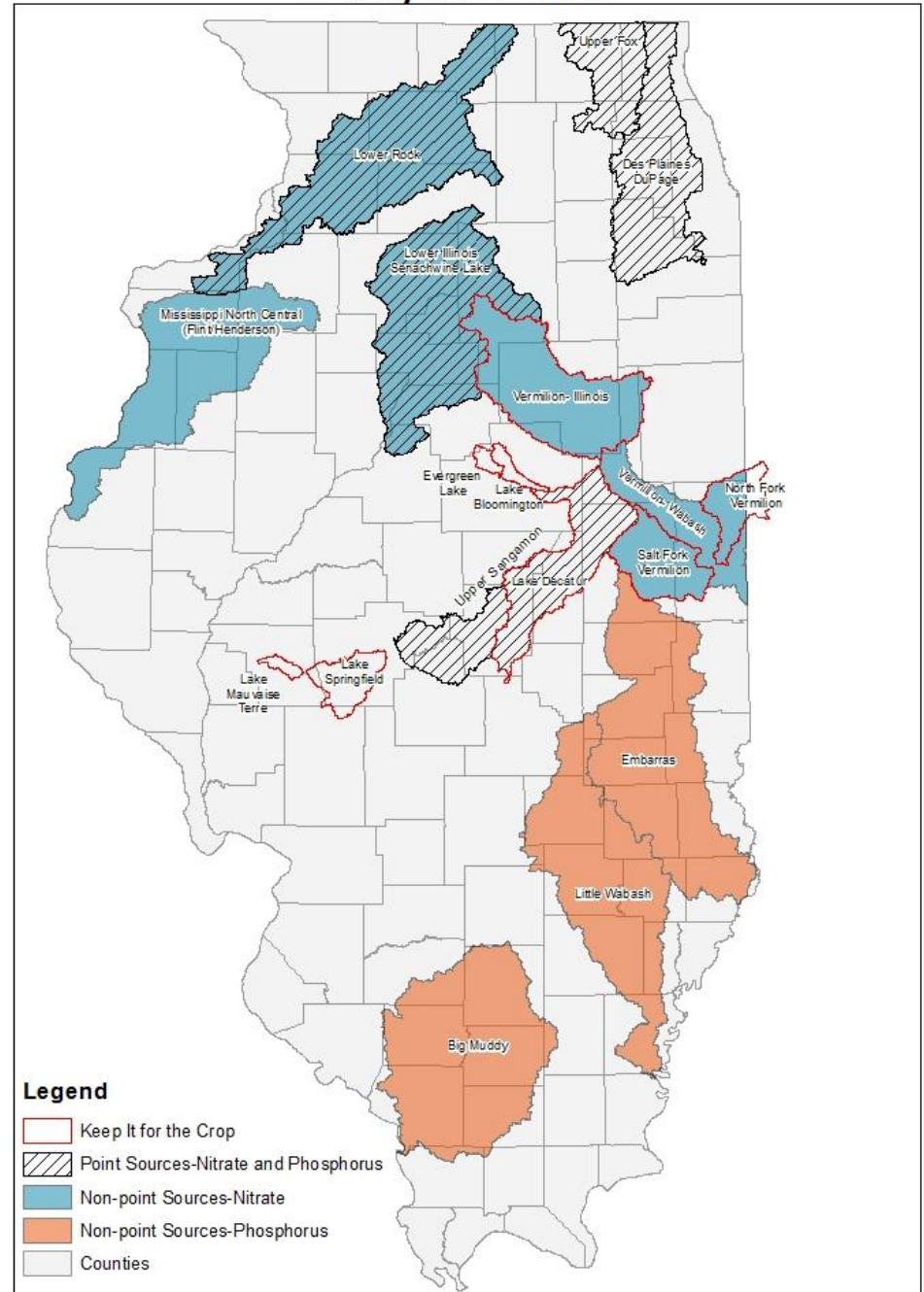
by  
Kelly Warner, Paul Terrio, Gary Johnson  
U.S. Geological Survey  
Illinois Water Science Center  
1201 West University Avenue  
Urbana, Illinois 61801  
(217) 328-8747



# Illinois Nutrient Loss Reduction Strategy Priority Watersheds

## What about:

- Generating loading estimates for some or all priority watersheds?
- Trying to show local water quality improvements (outcomes)?





# NMC Next Steps

- Next Meeting September 16, 2015.
- In preparation, we've asked NMC members for information and GIS coverages of the who's, what's, and where's of IL nutrient monitoring:
  - Ongoing/routine sampling
  - Length of record
  - Collection frequency
  - Information on all forms of P and N, chlorophyll *a*, DO, sediment, fish, bugs, mussels, habitat, chloride, bromide, others
  - Large networks, 8-digit HUC, or smaller NLRs priority watersheds
  - Surface and Ground water
- IWRC is in the process of generating maps and summarizing findings to visualize where monitoring is occurring throughout the state, to identify gaps, and to facilitate data aggregation.
- This will help in the creation of a prioritized list of nutrient monitoring program activities and associated funding needed to accomplish the charges of the NMC (Charge #2).



PRIORITiES

1. shutterstock
- 2.
- 3.

www.shutterstock.com - 193273415

Status of NLRs Implementation Workgroups, Forums, and Councils

# AGRICULTURE WATER QUALITY PARTNERSHIP FORUM (AWQPF)

*FIRST MEETING: MAY 22, 2015*

*AWQPF Technical Subcommittee Meeting: August 26, 2015*

***Warren Goetsch***



*Irene Miles, IISG*

# AWQPF

## Committee Charge

- Steer and coordinate **outreach and education** efforts to help farmers address nutrient loss and select the most appropriate BMPs:
  - Identify needed education initiatives or training requirements for farmer and technical advisors.
  - Strengthen connections between industry initiatives, certified crop advisor continuing education requirements, state initiatives, and other technical services.
- Track **BMP implementation**
- Coordinate **cost sharing** and **targeting**
- Develop **other tools** as needed
  - Consider an agriculture water quality certification program.

# AWQPF

## Outreach and Education

### Accomplishments and Conclusions

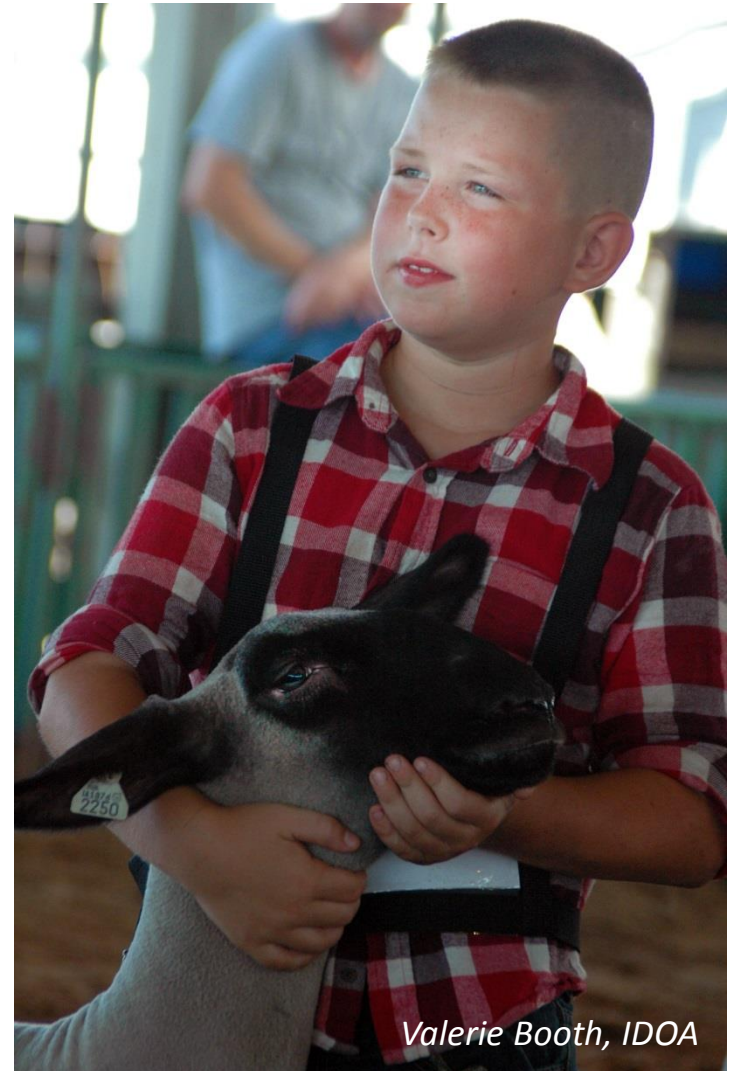
- Outreach and Education efforts currently conducted by the ag communicator group have been successful and will continue independently of the AWQPF.
- Gaps in education efforts include: Youth Audiences, & Female Farmers/Landowners.

# AWQPF

## Outreach and Education

### Next steps

- Ag communication partners will include FFA students in some of the planned summer events.
- Future events or initiatives may be held at fairs when possible and will include 4-H members.



*Valerie Booth, IDOA*



# AWQPF

## Track BMP Implementation

### Accomplishments and Conclusions

A technical **subgroup** (*meets Aug 26*) will:

1. Determine the best way to share and aggregate BMP implementation data across agencies (*so we can track our progress in accomplishing the NLRs*),
2. Determine what BMP implementation parameters will be tracked (e.g. cover crops, wetlands, buffer strips, etc.) and how it will be aggregated (e.g. per watershed, statewide, lump practices into categories like edge of field, etc.). This includes identifying future data parameters required from producer surveys or transect surveys to track progress in accomplishing the NLRs.
3. Assess existing BMP implementation data availability over time to advise the Policy Working Group as they select a BMP implementation baseline year.

# AWQPF

## Coordinate Cost Sharing and Targeting

### Accomplishments and Conclusions

The AWQPF felt that the NRCS technical committee is the appropriate venue to address targeting and coordination of cost share considerations.



C-BMP



ILLINOIS  
NUTRIENT LOSS  
REDUCTION STRATEGY

Improving our water resources with  
collaboration and innovation

# AWQPF

## Coordinate Cost Sharing and Targeting

### Next steps

- IEPA will query the appropriate AWQPF agencies on cost share deadlines and decision thresholds that each agency must consider.
- The results of the IEPA query will be presented at the next AWQPF meeting and cost share coordination and targeting will be further discussed.

Status of NLRS Implementation Workgroups, Forums, and Councils

# URBAN STORMWATER WORKING GROUP

*FIRST MEETING: JULY 20, 2015*

*Amy Walkenbach*



Courtesy Daily Illini

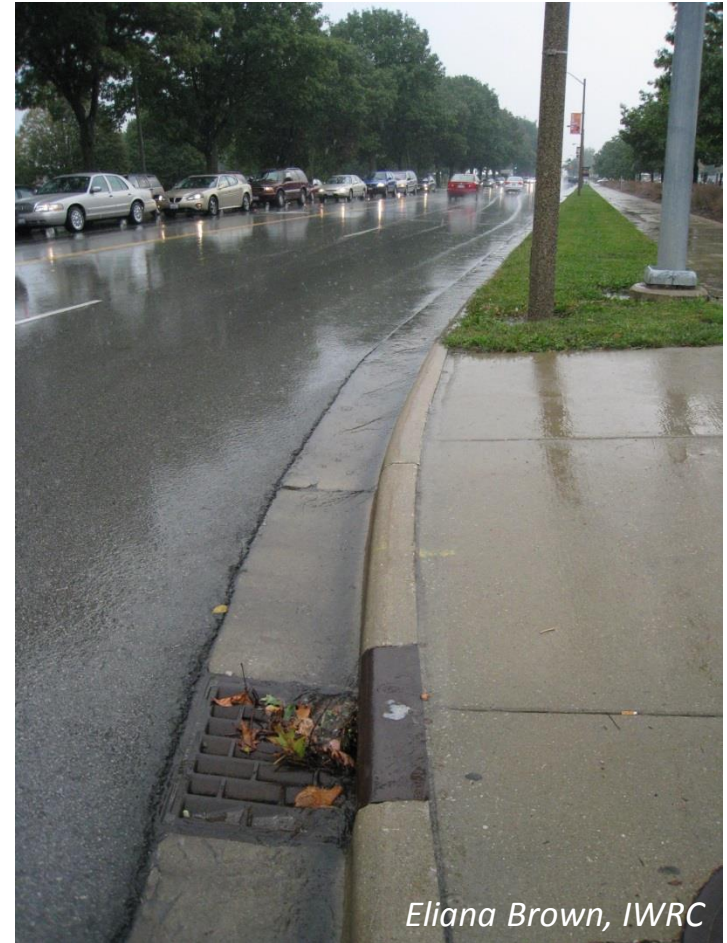


**ILLINOIS**  
NUTRIENT LOSS  
REDUCTION STRATEGY

Improving our water resources with  
collaboration and innovation

# Urban Stormwater Working Group Committee Charge

- Explore funding, identify legislative initiatives, and develop plans.
- Coordinate outreach
- Orchestrate statewide efforts related to green infrastructure expansion, MS4 program training, and urban stream, lake, and stormwater monitoring.





# Urban Stormwater Working Group: Explore funding, identify legislative initiatives, and develop plans

## Accomplishments and Conclusions

- Funding
  - Stormwater Utilities can be an important local source of funding
  - Funding is needed to support appropriate state and municipal staff
- Legislative and regulatory initiatives needed
  - Enabling legislation is needed to allow all counties to establish Stormwater Plans and Ordinances
  - Enabling legislation is needed to allow all counties to establish Stormwater Utility Fees

# Urban Stormwater Working Group: Explore funding, identify legislative initiatives, and develop plans

## Next steps

- Report to Policy Working Group funding and legislative needs for support and action



*Irene Miles, IISG*

# Urban Stormwater Working Group

## Coordinate Outreach

### Accomplishments and Conclusions

- Education and Outreach Strategy is needed to educate communities on the need for and value of stormwater utilities to ensure local water quality (*flood mgrs. & drinking water utilities are allies*)
- Nutrient module needed for city officials and consultants (not just in MS4 communities) to cover topics including: how to calculate nutrient loads and reductions, selecting BMP's, why the community should reduce runoff and nutrient loss
- Recognition program is needed for both MS4 and non regulated cites making progress toward nutrient and stormwater reductions (examples include: Watershed Heroes, Green Luminaries, Blue Star)
- Collective training is needed for municipal public works employees in MS4 communities
- Need a communication logo and tagline (like “what’s your strategy?”) for urban stormwater mgrs. & homeowners
- There is a geographic gap in southern IL that should be targeted

# Urban Stormwater Working Group

## Coordinate Outreach

### Next steps

- Develop an Education and Outreach Strategy to educate communities on the need for and value of stormwater utilities to ensure local water to support PWG legislative/funding initiative (if approved) [work with St. Louis and Champaign to incorporate lessons learned into strategy]
- Explore need for, then build, coalition and program necessary to deliver nutrient module to city officials and consultants
- Seek PWG approval for and support of a recognition program for both MS4 and non regulated cities making progress toward nutrient and stormwater reductions (*Could also do awards for point source and agriculture successes*)
- Build coalition and program necessary to deliver collective training for municipal public works employees in MS4 communities (options include statewide training (e.g. Indiana), webinars, appending to existing meetings (i.e. stormwater and floodplain mgrs., or Storm Con).
- Develop a communication logo and tagline (like “whats your strategy”) for urban stormwater mgrs. & homeowners
- Include Carbondale Regional Planning Commission as a partner and member of the USWG to address geographic gap in southern IL.



# Orchestrate statewide efforts related to green infrastructure expansion, MS4 program training, and urban stream, lake, and stormwater monitoring

## Accomplishments and Conclusions

- Tracking BMP practices and ordinances adopted by communities is a good idea and should be incorporated into the statewide Adaptive Management Strategy
- If you know the BMP and size, you can calculate nutrient reduction using existing modeling program



*Celeste Arbogast, U of I, CEE*



# Orchestrate statewide efforts related to green infrastructure expansion, MS4 program training, and urban stream, lake, and stormwater monitoring

## Next steps

- Seek PWG guidance on most appropriate vehicle to incorporate urban nonpoint source reductions into overall strategy (options include: AWQPF Tech group, and NMC)
- Determine method to mine needed data. Sources include:
  - a. Resource Management Mapping Service
  - b. MS4 Reporting
  - c. GIS location data

Status of NLRs Implementation Workgroups, Forums, and Councils

# NUTRIENT SCIENCE ADVISORY COMMITTEE

*FIRST MEETING: OCTOBER 2015*

*Selection Panel Meeting: August 20, 2015*

*Brian Miller*



# Nutrient Science Advisory Committee Committee Charge

- Determine the numeric criteria for nutrients most appropriate for Illinois waterbodies based on the best science available.
- Consider whether standard should be statewide or watershed specific.



*Zoe Zaloudek, Water Is Photo Contest*

# Timeline for Nutrient Science Advisory Committee

- PWG nominated potential candidates (June 30) – 18 nominations received
- A NSAC selection panel was selected- 1 rep. from each sector (Env., Ag., P.S., Gov., Univ.)
- Selection committee meets Aug. 20
- NSAC hopefully has first meeting in October
- NSAC will meet approx. every 2 months with a mix of public and executive session meetings and conference calls

# Nutrient Science Advisory Committee Selection Process

- Follows EPA Science Advisory Board selection criteria and procedures



- Selection panel follows standard conflict of interest and confidentiality guidelines used in scientific proposal review panels



# Nutrient Science Advisory Committee

## Criteria for Selection

- **Area(s) and level of expertise:**
  - a. Biological responses to nutrients in a freshwater ecosystem.
  - b. Factors influencing biological response to nutrients.
  - c. Watershed scale differences in nutrient loading/differences in ecosystem response to nutrients.
  - d. Methodologies for developing nutrient criteria.
  - e. Spatial and temporal relationship between biotic integrity and chemical responses to nutrient loads.
  - f. Nutrient and food web dynamics in agriculturally dominated streams.
  - g. Sediment and the role it plays in nutrient loading and nutrient deposition.

# Nutrient Science Advisory Committee

## Criteria for Selection

- Area(s) and level of expertise
- Experience with Illinois or similar flowing waters
- Related publication and research activities
- Skills working on advisory panels, committees or workshops
- Lack of conflict of interest
- Appearance of impartiality

# Funding for Nutrient Science Advisory Committee

- Meeting expenses: transportation, lodging, per diem
- Honorarium (for those who can accept one): \$500 per meeting
- Opportunity for sectors to contribute to fund that offers honorariums for writing assignments and between meeting activities and travel for outside experts



*Natalie Stevenson, Water Is Photo Contest*



# Implementation process after NSAC completes work (*Marcia Willhite*)

- After NSAC makes its determination, Illinois EPA will work with stakeholders to develop an implementation plan
- Intent is to go to rulemaking with a standards proposal and an implementation plan

# Point Source Working Group

## Discussion

- Background (Marcia)
- Should we establish this group?
- Who should be on it?



Status of NLRs Implementation Workgroups, Forums, and Councils

# **POLICY WORKING GROUP**

*FIRST MEETING: AUG 4, 2015*

*Brian Miller*

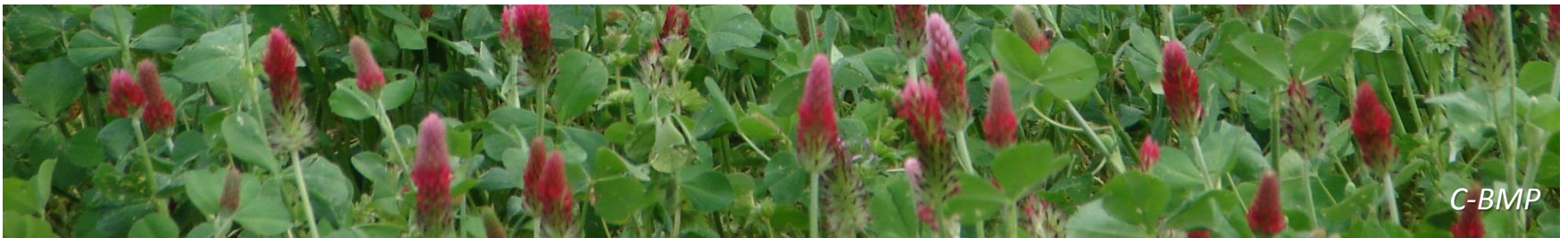


**ILLINOIS**  
NUTRIENT LOSS  
REDUCTION STRATEGY

Improving our water resources with  
collaboration and innovation

# Policy Working Group (PWG) Committee Charge

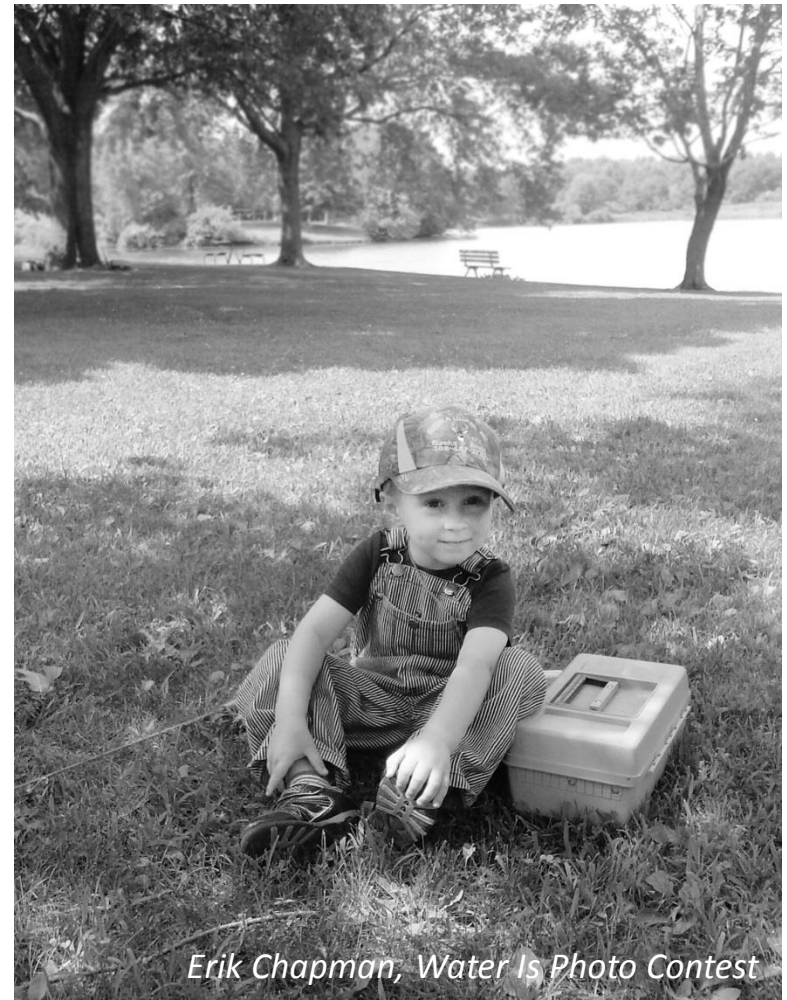
- Steer implementation of the strategy.
- Consider policy issues emerging from public comments.
- Explore funding opportunities.
- Identify needed legislative initiatives.
- Identify adaptive management adjustments and update the strategy.



*C-BMP*

# Items requiring Policy Working Group consideration and action at future mtgs.

- Implementation benchmarks
- Goal date for achieving 45% reduction in N and P
- Exploring the establishment of a watershed protection utility
- Establishing an Agronomic Technical Advisory Team
- Trading/offsets between NPS and PS



*Erik Chapman, Water Is Photo Contest*



# Establishing a baseline year for Adaptive Management

- Introduction (Marcia Willhite)
- Potential options for Baseline establishment (Brian Miller)
- Facilitated discussion



*Jennifer Byard, Water Is Photo Contest*

# Potential Baseline Options for Adaptive Management *(Pros and Cons?)*

- 2001 – First Hypoxia Action Plan
- 2011 – Science assessment loading calc. completed
- 2015 – NLRs finalized
- 2017 – Provides time to get data measures in place
- Others?



# Implementation Benchmarks

- Introduction (*Marcia Willhite*)
- Facilitated discussion (*Brian Miller*)
  1. Should we establish implementation Benchmarks?



*Bernadette Tiemann, Water Is Photo Contest*

## 2. What is the nature of the benchmark?

- Benchmark metrics (lbs removed, % reduction)
- BMP implementation targets (% of acreage covered, # of acres covered, point source separate?, Urban stormwater separate?)
- Time Target (% or # by \_\_\_\_\_ eg.2040)

# How Do We Reach A Decision On Implementation Benchmarks?

- 1) Work on as a main agenda item at the next PWG meeting?
- 2) Appoint a subcommittee to explore and report options/findings at the next PWG meeting?

# Schedule of future PWG meetings (*Eliana Brown*)

- Nov 17, 2015
- Mar 15, 2016
- Aug 30, 2016



*Thomas Durbin, Water Is Photo Contest*