

A scenic landscape photograph of a park. In the foreground, there is a lush green lawn with some yellow wildflowers. A small, calm pond or stream flows through the middle ground, reflecting the sky and surrounding greenery. A modern, light-colored metal bridge with a truss design spans across the water. The banks of the pond are covered in vibrant green grass. In the background, there are several trees, including some with bright red blossoms on the left and a large tree with white blossoms on the right. A multi-story building is partially visible behind the trees on the right side. The overall scene is bright and sunny, suggesting a pleasant day in a well-maintained park.

NUTRIENT MONITORING COUNCIL

MEETING 1: MAY 13

Photo by Thomas Durbin, "Water is... Contest"

ORGANIZATIONAL MATTERS

Purpose: Establish NMC and
Clarify Goals

Structure: Working Group

IWRC Role: Facilitation

Terms of Service: 2 years

Meeting frequency: 3-4x/year

Introductions:

Co-Chairs: Selection

COUNCIL CHARGE

Council Charge:

1. To develop a nutrient monitoring program (e.g., program design, data collection and methods, data analysis and assessment, QA, reporting, evaluation) that, if implemented:
 - a. Collects the necessary information to generate estimations of 5-yr running avg. loads of Nitrate-Nitrogen and Total Phosphorus leaving the state of IL and high priority selected 8-digit HUC basins; and
 - b. Identifies trends in loading over time as compared to 1997-2011 baseline conditions.

Council Charge:

2. To develop a prioritized list of nutrient monitoring program activities and associated funding needed to accomplish the charges/goals listed in a. and b.

Council Charge:

3. Should we calculate statewide/8-digit HUC loads of other nutrients?

➤ Potassium?

Council Exercise:

What form of nutrients are we measuring (TP, TN, SRP, etc)?

Council Exercise:

What should be monitored
going forward?

Council Charge:

- 4. Should we calculate statewide/8-digit HUC Sediment Loads?**

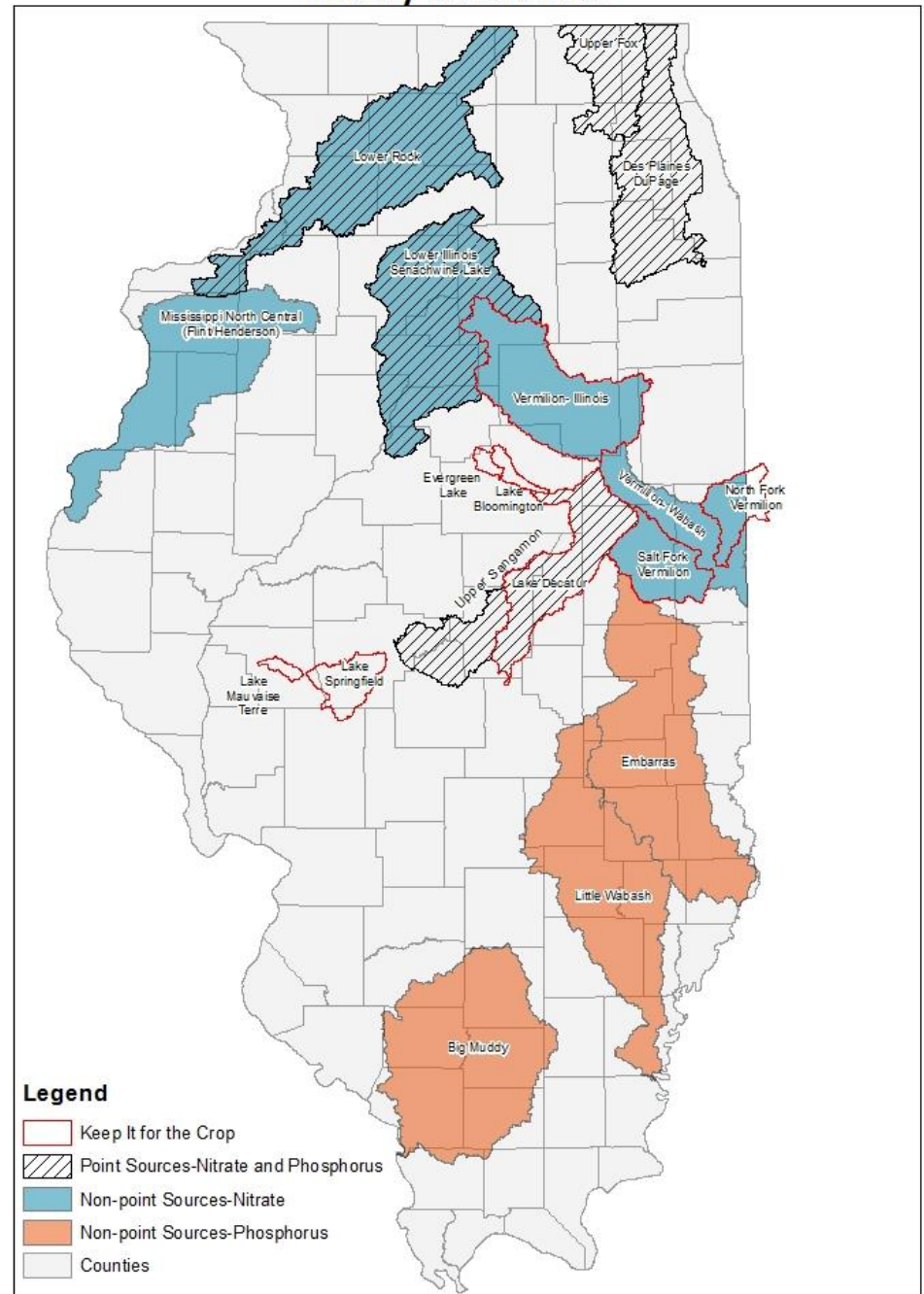
Council Charge:

5. How do we measure local water quality?

- Do we include the biological component?
- If so, what should we measure?

Council Charge:

6. How do we
prioritize location?



Council Charge:

7. Given the goal that we need to be up and running in 1.5 years:

- What is the strategy on monitoring density in priority vs non priority watersheds
- How do we phase this in over time?

Council Charge:

8. Do we identify Existing low phosphorus (<0.04 mg/l) streams in Illinois?

Council Charge:

9. Discuss need to coordinate with the Ag WQ Partnership Forum workgroup to accomplish adaptive management
- AWQPF workgroup tracks BMP implementation and transect survey data

NEXT STEPS

Next Steps

- Co chairs?
- Co-Chairs will put together work plan and agenda for the next meeting

Next steps:

Meeting scheduling In 3 or 4 months

What is Best, July or Aug?

A photograph of a field of red clover flowers. The flowers are in various stages of bloom, with some showing the characteristic red, elongated flower heads. The leaves are green and trifoliate. A black rectangular box with the text "THANK YOU!" in white is overlaid on the left side of the image. Below the black box is a white rectangular box, and to the left of the white box is a small orange square.

THANK YOU!