

# AGRICULTURE WATER QUALITY PARTNERSHIP FORUM

MAR 12, 2018

# Introductions

## **Illinois EPA**

Trevor Sample and Amy Walkenbach

## **IDA**

Warren Goetsch

## **USDA-NRCS**

Ivan Dozier

## **IDNR**

Mike Chandler

## **AISWCD**

Steve Stierwalt

## **The Nature Conservancy**

Caroline Wade and Maria Lemke (Adrienne Marino)

## **IFCA**

Jean Payne

## **American Farmland Trust**

Kris Reynolds

## **Prairie Rivers Network**

Carol Hays

## **LICA**

Ryan Arch

## **MWRDGC**

Guanlong Tian

## **Illinois Farm Bureau**

Lauren Lurkins

## **Illinois Pork Producers Association**

Jennifer Tirey

## **Illinois Soybean Association**

Amy Roady

## **University of Illinois - Extension**

Laura Christianson (on phone)

## **Farm Service Agency**

Rick Graden

## **Illinois Certified Crop Advisor Board of Directors**

Lisa Martin

## **Illinois Stewardship Alliance**

Woody Woodruff

## **Illinois Soc. of Prof. Farm Managers & Rural Appraisers**

Randy Fransen

## **Illinois Corn Growers Association**

Rodney Weinzierl

## **Nutrient Research and Education Council**

Julie Armstrong

# Committee Charge

## Agriculture Water Quality Partnership Forum

- Steer and coordinate outreach and education efforts to help farmers address nutrient loss and select the most appropriate BMPs:
  - Identify needed education initiatives or training requirements for farmer and technical advisors.
  - Strengthen connections between industry initiatives, certified crop advisor continuing education requirements, state initiatives, and other technical services.
- Track BMP implementation
- Coordinate cost sharing and targeting
- Develop other tools as needed
  - Consider an agriculture water quality certification program.

# Soil Transect Survey – Elliot Lagacy

What do we include in the next Biennial Report

# **FSA Cover Crop reporting**

## How do we improve data capture?

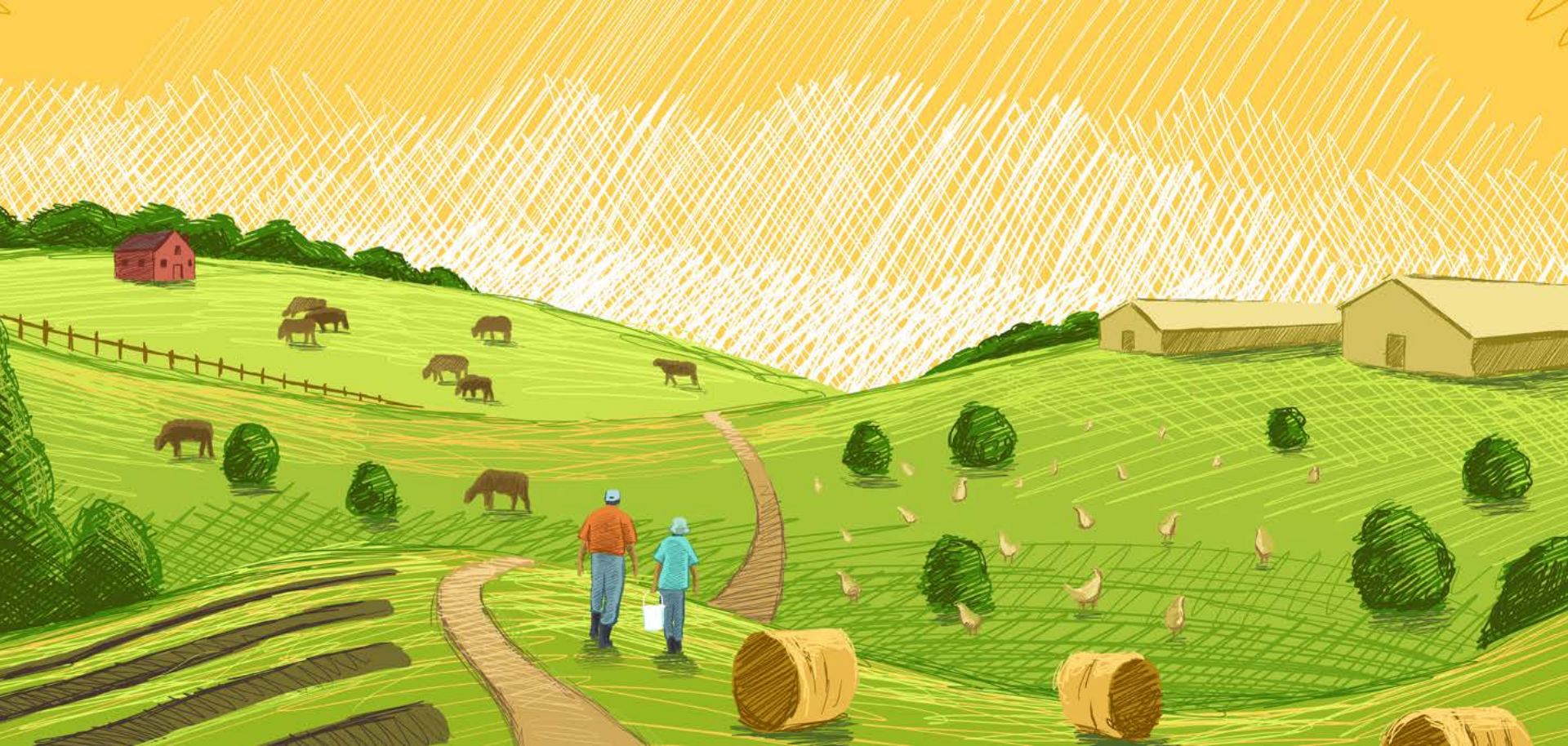
# Filter strips and Riparian Buffers

Establishing baseline and potential placement  
Iowa BMP Mapping Project  
NRCS Lidar study/negative slope analysis

**Review method for adding conservation practices to NLRS  
and review BMP performance based on NREC findings  
– Drs. Laura Christianson and Reid Christianson**

# 2019 NASS Survey – Mark Schleusener





# Next NLRs survey by NASS

Date 3/12/2018

Presented by:  
Mark Schleusener



2017 CENSUS OF  
AGRICULTURE  
YOUR VOICE. YOUR FUTURE. YOUR OPPORTUNITY.

United States Department of Agriculture  
National Agricultural Statistics Service

[www.agcensus.usda.gov](http://www.agcensus.usda.gov)

# Next NLRs NASS survey

- Reference year will be 2017
- Data collection in early 2019
  - Mail, mail again, then phone
- Results in May 2019
  - To be included in bi-annual report

# Next NLRs NASS survey (continued)

- Funding from NREC
- External review may be needed for NASS protocol

# Questionnaire update process

- Consultation with Lauren Lurkins and Jeff Kirwan
- Pilot test shortly
- Meeting 3/13/2018 to create draft for testing

# Summary of questionnaire changes

- Only one year needed (2017)
  - First survey asked for 2011 (baseline) and 2015
- More scripted strategies for N applications
  - Spring N application with nitrification inhibitor
- Several open-ended questions added
  - What else are you doing?
  - Trying to capture new techniques not already in the NLRS

# Next steps and Future meetings

## Potential topics:

- Agrible partnership for capturing 4R metrics – IFCA
- Report on livestock/manure management practice implementation in next Biennial Report
- Using watershed modeling to determine load reductions from implemented practices
- Address climate variability/resiliency in next Biennial Report

# Comments from the Floor (time permitting)



*Photo by Ashley Rice, "Water Is..." Photo Contest*