

# AGRICULTURE WATER QUALITY PARTNERSHIP FORUM

MEETING 1: MAY 22, 2015



**ILLINOIS**  
NUTRIENT LOSS  
REDUCTION STRATEGY

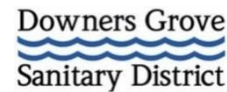
Improving our water resources with  
collaboration and innovation

# Policy Working Group Participation in NLRs Development

## Agriculture



## Point Source



## Environmental



## University/Technical Assistance



## Government



# Development of NLRS Document

Illinois Environmental Protection Agency

[CONTACT US](#) [SERVICES MAP](#) [FORMS](#)



[Citizens](#) [Business](#) [Government](#) [Educators](#) [About IEPA](#)

Search

## Public Comment Period for Illinois Nutrient Loss Reduction Strategy

[Home](#) / [Topics](#) / [Water Quality](#) / [Watershed Management](#) / [Excess Nutrients](#)  
/ [Nutrient Loss Reduction Strategy](#)

**Public comments on the draft Illinois Nutrient Loss Reduction Strategy were taken from November 24, 2014 through January 25, 2015.**

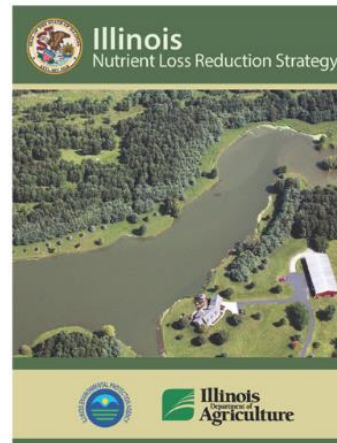
Below are the comments received by the Illinois EPA in response to the draft Strategy.

[Comments 1](#)

[Comments 2](#)

[Comments 3](#)

The Illinois Nutrient Loss Reduction Strategy guides state efforts to improve water quality at home and downstream by reducing nitrogen and phosphorus levels in our lakes, streams, and rivers. The strategy lays out a comprehensive suite of best management practices for reducing nutrient loads from wastewater treatment plants and urban and agricultural runoff. Recommended activities target the state's most critical watersheds and are based on the latest science and best-available technology. It also calls for more collaboration between state and federal agencies, cities, non-profits, and technical experts on issues such as water quality monitoring, funding, and outreach.



### SECTION NAVIGATION

[Go Back](#)

### FIND SERVICES

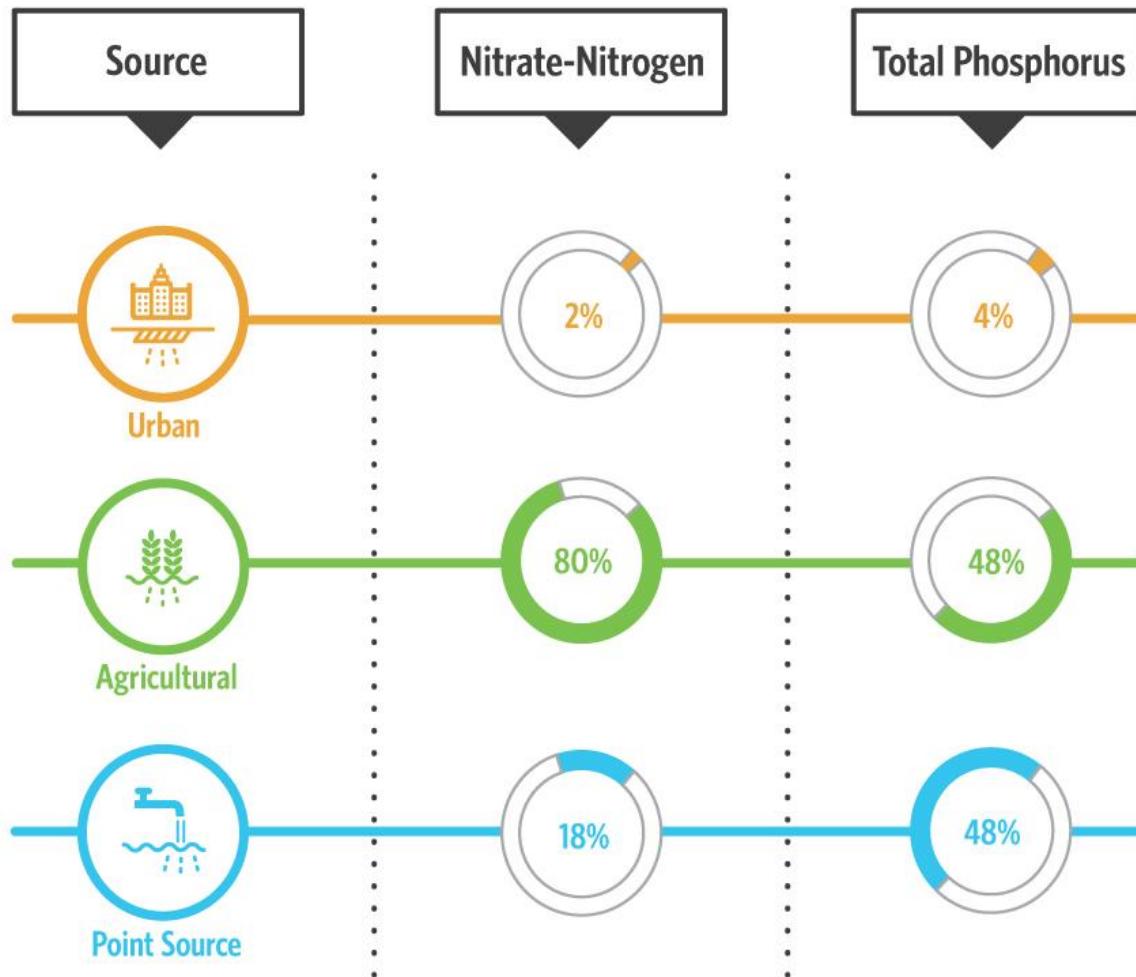
- VIM Testing Station
- Medication Disposal Locations
- E-Waste Collection Sites
- Hazardous Waste Collection Sites

Within 10  miles of

Address or City or ZIP



# Nutrient Contributions by Source



Source: Illinois Nutrient Loss Reduction Strategy, Science Assessment

# Standing up Committees Needed for Implementation

- 1) Policy Working Group
- 2) Nutrient Monitoring Council
- 3) Nutrient Science Advisory Committee
- 4) Urban Stormwater Working Group
- 5) Agriculture Water Quality Partnership Forum



# Committee Charges

## 1) Policy Working Group (June)

- Steer implementation of the strategy.
- Consider policy issues emerging from public comments.
- Explore funding opportunities.
- Identify needed legislative initiatives.
- Identify adaptive management adjustments and update the strategy.



# Committee Charges

## 2) Nutrient Monitoring Council (May 13)

- Develop a nutrient monitoring program (i.e., program design, data collection and methods, data analysis, quality assurance, reporting, evaluation).
- Develop a prioritized list of nutrient monitoring program activities and associated funding needed to accomplish the charges/goals.



# Committee Charges

## 3) Nutrient Science Advisory Committee (August)

- Determine the numeric criteria for nutrients most appropriate for Illinois waterbodies based on the best science available.
- Consider whether standard should be statewide or watershed specific.





# Committee Charges

## 4) Urban Stormwater Working Group (July)

- Explore funding, identify legislative initiatives, and develop plans.
- Coordinate outreach.
- Orchestrate statewide efforts related to green infrastructure expansion, MS4 program training, and urban stream, lake, and stormwater monitoring.



# Committee Charges

## 5) Agriculture Water Quality Partnership Forum

- Steer and coordinate outreach and education efforts to help farmers address nutrient loss and select the most appropriate BMPs:
  - Identify needed education initiatives or training requirements for farmer and technical advisors.
  - Strengthen connections between industry initiatives, certified crop advisor continuing education requirements, state initiatives, and other technical services.
- Track BMP implementation
- Coordinate cost sharing and targeting
- Develop other tools as needed
  - Consider an agriculture water quality certification program.

# Committee Charges

## 5) Agriculture Water Quality Partnership Forum

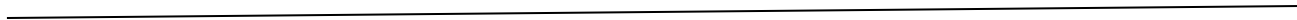
- Steer and coordinate outreach and education efforts to help farmers address nutrient loss and select the most appropriate BMPs:
  - Identify needed education initiatives or training requirements for farmer and technical advisors.
  - Strengthen connections between industry initiatives, certified crop advisor continuing education requirements, state initiatives, and other technical services.
- Track BMP implementation
- Coordinate cost sharing and targeting
- Develop other tools as needed
  - Consider an agriculture water quality certification program.

# History: PWG Ag subcommittee Outreach and Education Conclusion (April 2014)

- Outreach and education are vital to the success of the NLRs.
- A mechanism is needed to help producers see results.
- Efforts should include Extension, SWCDs, and CCAs and practices should potentially be included in the Agronomy Handbook.
- There is already some work being done to include nutrient BMPs in continuing education requirements for CCAs.



# Agriculture Partners Coordinating Outreach and Communication



# Agriculture Partners Coordinating Outreach and Communication



# Ongoing Efforts: Outreach and Education

- Newsletter articles
- Direct correspondence
- Meetings with members
- Roadshows
- Social media
- Connecting NLRS to existing programs



# Coordinated Communication Strategies



*Photo by Marilyn Sanders*

## “Water is...” Photo Contest



**ILLINOIS**  
NUTRIENT LOSS  
REDUCTION STRATEGY

Improving our water resources with  
collaboration and innovation



# Coordinated Communication Strategies



Dr. Mark David  
University of Illinois at Urbana-Champaign

“The Science of the Strategy” video series



**ILLINOIS**  
NUTRIENT LOSS  
REDUCTION STRATEGY

Improving our water resources with  
collaboration and innovation

# Outreach and Education: Discussion

- Other efforts?
- What are the gaps?



*Photo by: Jennifer Byard*



**ILLINOIS**  
NUTRIENT LOSS  
REDUCTION STRATEGY

Improving our water resources with  
collaboration and innovation

# Outreach and Education: **Next Steps**

Long Term “help farmers address nutrient loss and select the most appropriate BMPs”:

- Identify needed education initiatives or training requirements for farmer and technical advisors.
- Strengthen connections between industry initiatives, certified crop advisor continuing education requirements, state initiatives, and other technical services.

How do you want to manage this objective?

*“AWQPF will also create a subgroup responsible for developing products and programs to help producers evaluate and select the most appropriate BMP...”*

*Is the existing Ag. Partners coordination group a viable vehicle to build upon?*

# Committee Charges

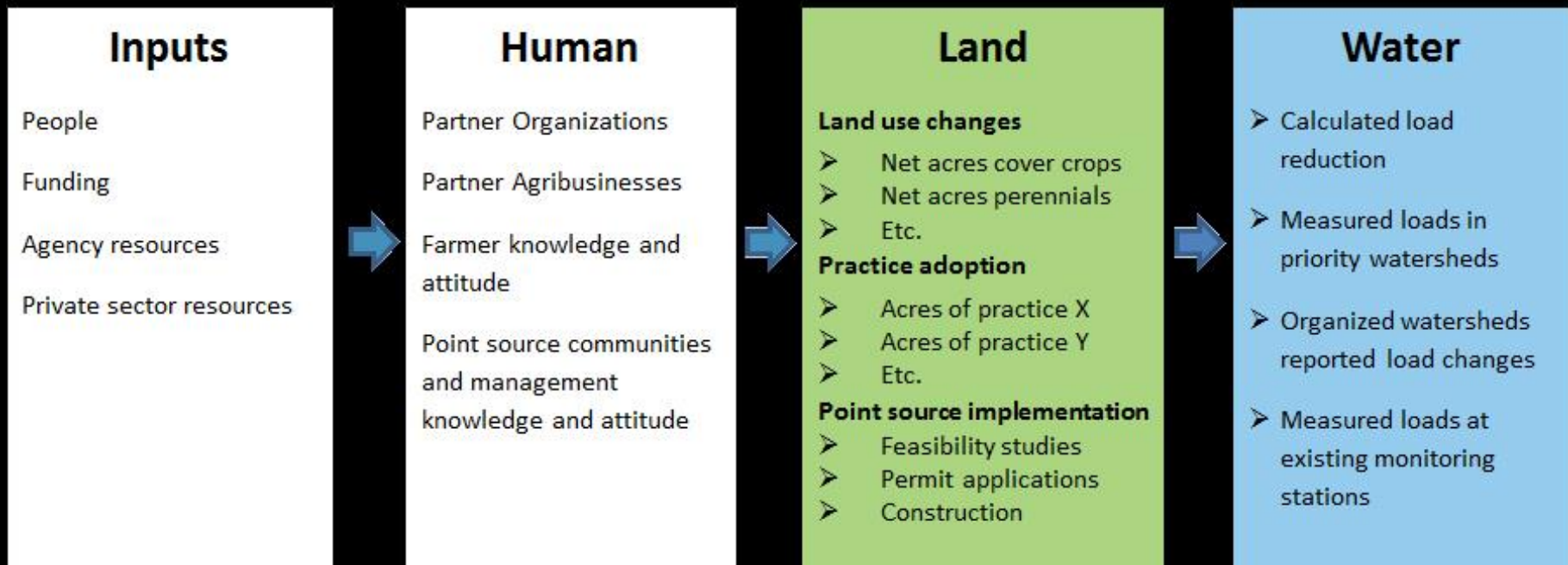
## 5) Agriculture Water Quality Partnership Forum

- Steer and coordinate outreach and education efforts to help farmers address nutrient loss and select the most appropriate BMPs:
  - Identify needed education initiatives or training requirements for farmer and technical advisors.
  - Strengthen connections between industry initiatives, certified crop advisor continuing education requirements, state initiatives, and other technical services.
- **Track BMP implementation**
- Coordinate cost sharing and targeting
- Develop other tools as needed
  - Consider an agriculture water quality certification program.



# Tracking BMP Implementation – Iowa Example

## Measurable indicators of desirable change



*Source: Iowa State University, Extension and Outreach, Measures of Success Committee*



# Track BMP implementation

- Producer survey (*Mark Schleusener*)
- Transect survey (*Mike Rahe*)
- GIS location data (*everyone*)



Photo by: Diane Shasteen



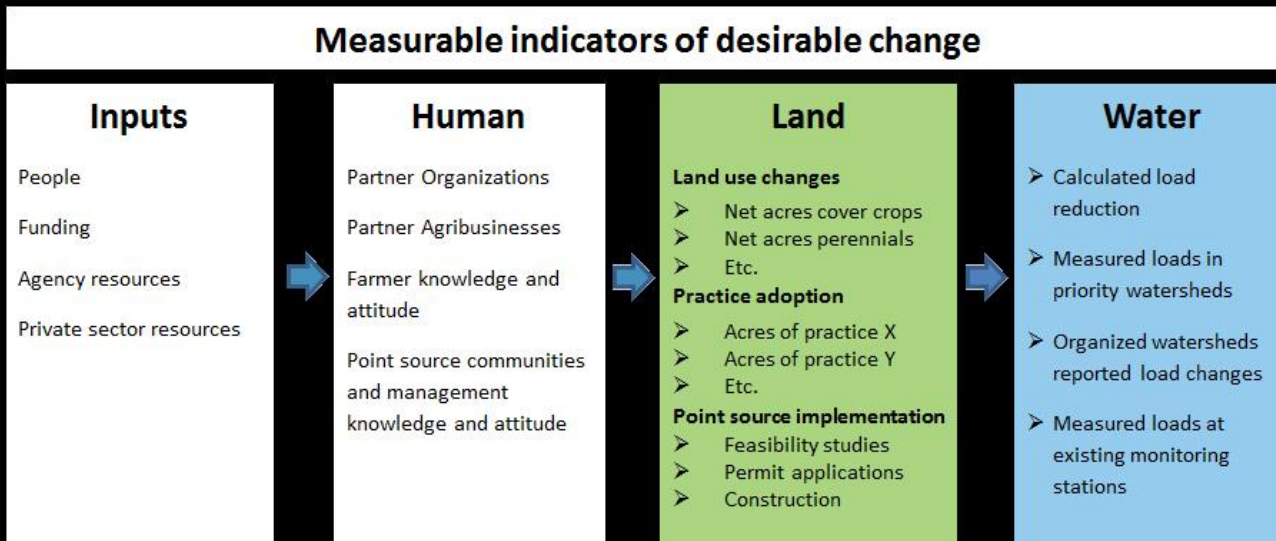
**ILLINOIS**  
NUTRIENT LOSS  
REDUCTION STRATEGY

Improving our water resources with  
collaboration and innovation

# Track BMP implementation

## ➤ Coordination with Nutrient Monitoring Council

*AWQPF will also create a subgroup responsible for ...working with the Nutrient Monitoring Council to track and report BMPs.”*



How do you want to manage this objective?

“Future question – BMP Implementation Baseline

# Committee Charges

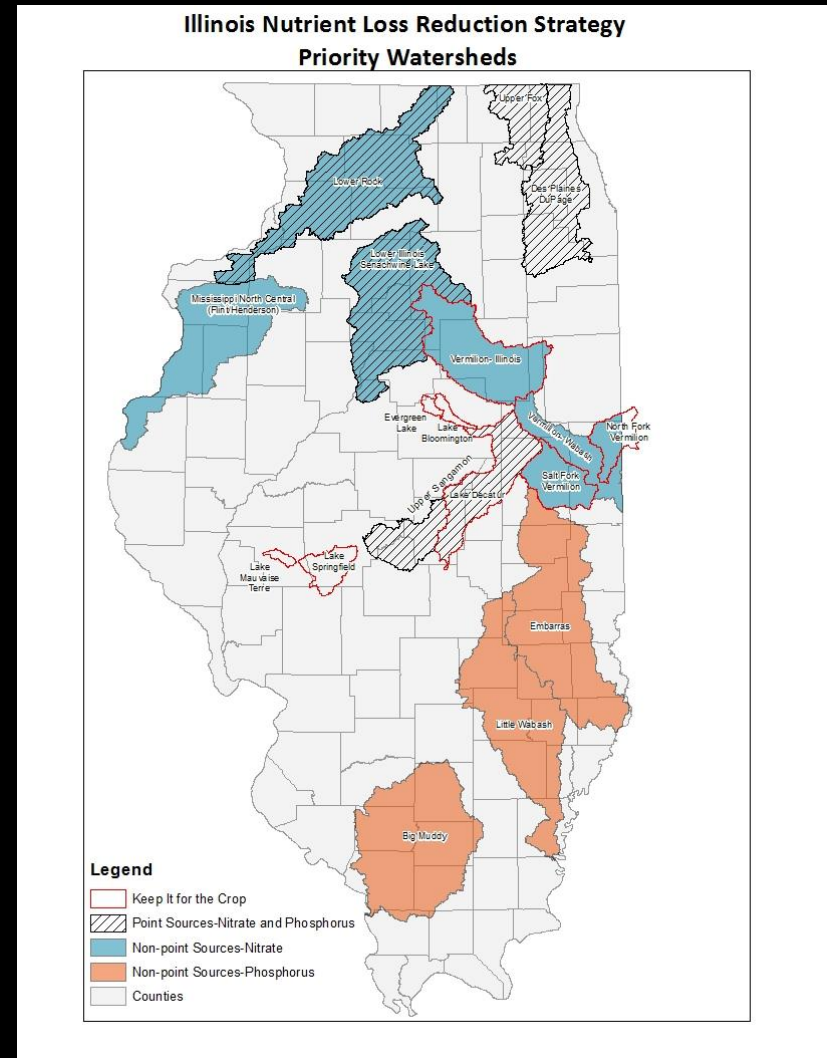
## 5) Agriculture Water Quality Partnership Forum

- Steer and coordinate outreach and education efforts to help farmers address nutrient loss and select the most appropriate BMPs:
  - Identify needed education initiatives or training requirements for farmer and technical advisors.
  - Strengthen connections between industry initiatives, certified crop advisor continuing education requirements, state initiatives, and other technical services.
- Track BMP implementation
- **Coordinate cost sharing and targeting**
- Develop other tools as needed
  - Consider an agriculture water quality certification program.



# Coordinate Cost Sharing and Targeting

- Agency cost share timelines (*everyone*)
- Best venue for cost share and targeting discussions and decisions



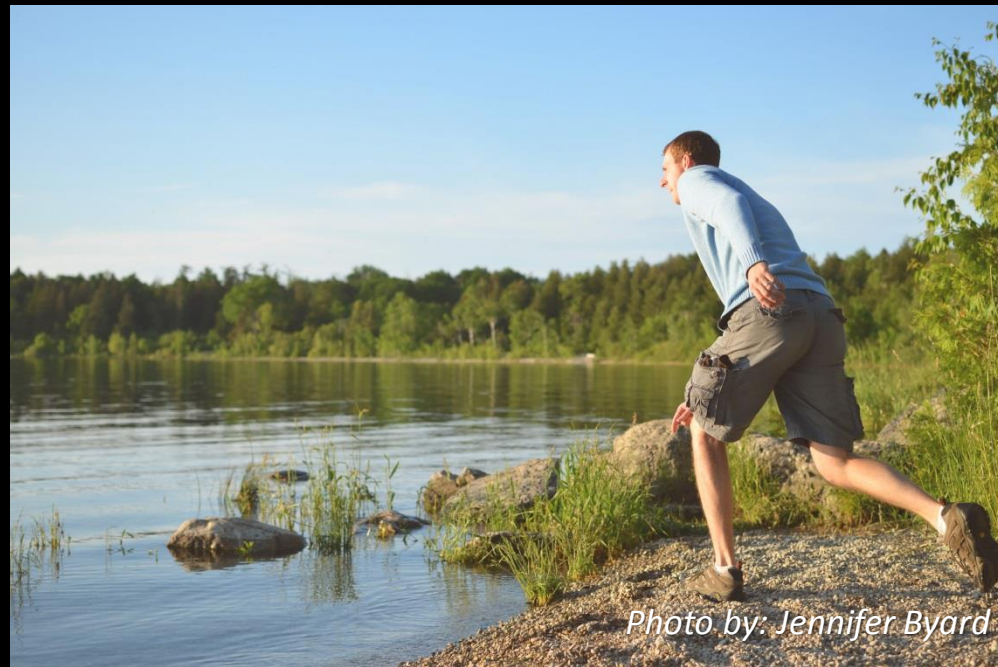
# Committee Charges

## 5) Agriculture Water Quality Partnership Forum

- Steer and coordinate outreach and education efforts to help farmers address nutrient loss and select the most appropriate BMPs:
  - Identify needed education initiatives or training requirements for farmer and technical advisors.
  - Strengthen connections between industry initiatives, certified crop advisor continuing education requirements, state initiatives, and other technical services.
- Track BMP implementation
- Coordinate cost sharing and targeting
- **Develop other tools as needed**
  - Consider an agriculture water quality certification program.

# Next meeting

➤ In July or August?



*Photo by: Jennifer Byard*



**ILLINOIS**  
NUTRIENT LOSS  
REDUCTION STRATEGY

Improving our water resources with  
collaboration and innovation

# THANK YOU!



**ILLINOIS**  
NUTRIENT LOSS  
REDUCTION STRATEGY

Improving our water resources with  
collaboration and innovation

*Photo by Jeremy Tiemann*