

# GREEN INFRASTRUCTURE INVENTORY

## Funding from Illinois EPA

### Project Partners

- Eliana Brown, Water Quality Specialist, University of Illinois Extension
- Reid Christenson, Research Assistant Professor, Crop Sciences, University of Illinois at Urbana-Champaign (former)
- Mary Beth Falsey, Water Quality Supervisor, DuPage County Stormwater
- Justin Keller, Project Manager, Metropolitan Planning Council
- Jong Sung Lee, Deputy Associate Director, National Center for Supercomputing Applications, University of Illinois at Urbana-Champaign
- Gabe Harper-Hagen, Extension Associate, University of Illinois Extension
- Laura Kammin, Education Program Specialist, National Great Rivers Research and Education Center
- Lisa Merrifield, Extension Specialist, University of Illinois Extension
- Piper Siblik, Extension Associate, University of Illinois Extension
- Dick Warner, Senior Scientist for Sustainability, National Great Rivers Research and Education Center



**Illinois Extension**  
UNIVERSITY OF ILLINOIS-URBANA-CHAMPAIGN

# What is the GI Inventory?

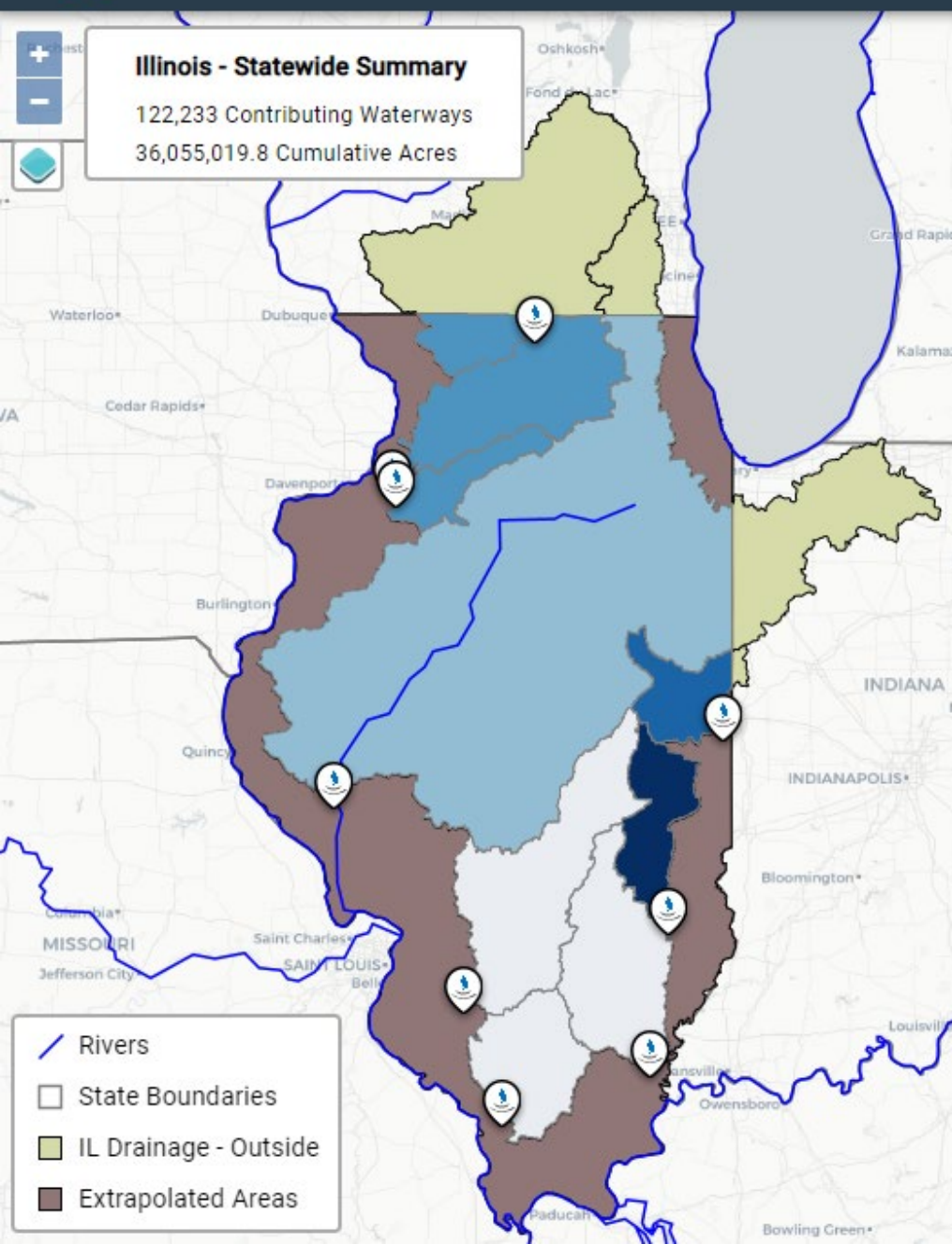
- Collection of green stormwater infrastructure practices throughout Illinois
- Comprehensive data to keep track of where these practices are what types of green infrastructure each site uses
- Future integration on the Great Lakes Virtual Observatory platform



# Purpose of the GI Inventory

- Measure and evaluate stormwater practices across Illinois
  - Can be compared to existing data on nutrient levels in surrounding water ways
  - Helps to understand long term impacts of GI on water quality and flooding
  - Allows communities to make informed decisions to reach goals
  - Statewide data source of stormwater BMPs that can be used by researchers, students, and planning commissions
  - Help communities choose the best solution for their stormwater management challenges
-



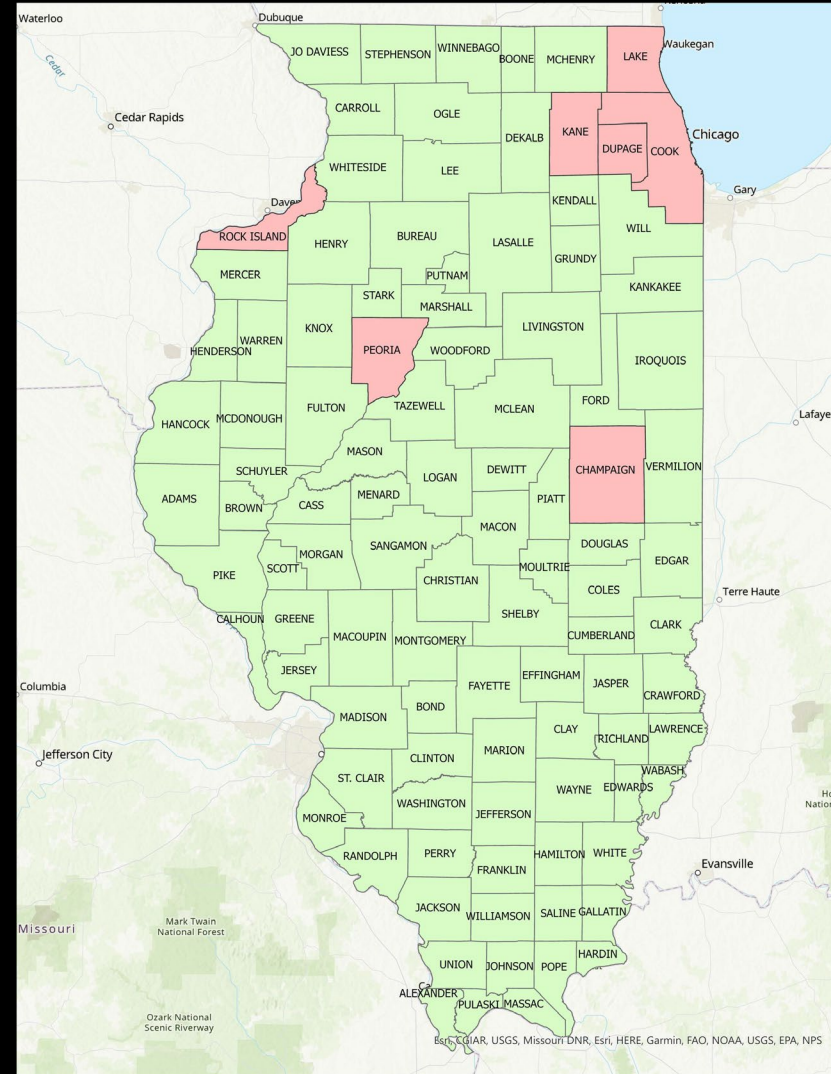


# The Great Lakes to Gulf Virtual Observatory

- Visualize and better understand nutrient pollution and potential causes
- User-friendly access to water quality information for the Mississippi River and its tributaries
- Tools to analyze and graph specific parameters
- Examine data layers such as land cover, rainfall, and more
- Download data for further exploration

# Current data

- Data collected from MS4 reports, compiled lists, and participating partners
- Many urban places in Illinois
- Working on collecting data from more counties
- Goal to have municipalities enter their practices on the platform in the future



# Next Steps

- Complete initial data collection by January 2023
- Present first draft of visualizations by March 2023
- Begin reaching out to communities for additional data by June 2023
- Consider data collection mechanisms

*Publicizing to MS4 communities*

*Attending related meetings*

*Working with Master Gardeners and Master Naturalist to collect citizen science*

---