

Illinois NLRs Performance Benchmark Committee

September 28, 2022 Meeting Summary



Performance Benchmark Committee

September 28, 2022 Meeting Agenda

2:00 **Welcome** *Trevor Sample, IEPA*

2:05 **Review of 2021 Report Chapter 8 Adaptive Management and Measuring Progress, Trevor Sample**
Open Discussion on suggestions for improvements and/or additions

2:40 **NLRS Biennial Report additional analysis, Trevor Sample**
Open Discussion

2:55 **Next Steps**

3:00 **Adjourn**



Review of 2021 Report Chapter 8 Adaptive Management and Measuring Progress



Water Quality Goals

Compare 5-year average total phosphorus and total nitrogen loads to interim and long-term goals

Water Quality Goals

The NLR5 was established to improve water quality from local lakes and streams in Illinois to the Gulf of Mexico, as per U.S. Environmental Protection Agency guidelines. To achieve these load reductions, Illinois has set short- and long-term goals to reduce both nitrate-nitrogen and total phosphorus by 45%, with interim reduction goals of 15% and 25%, respectively, by 2025. Figures 8.1 and 8.2 illustrate the state's progress as compared to the baseline years 1980-96. Loads are measured as a range of years because environmental conditions, such as annual precipitation, can greatly impact them. A rolling average is a more reliable measure of progress.

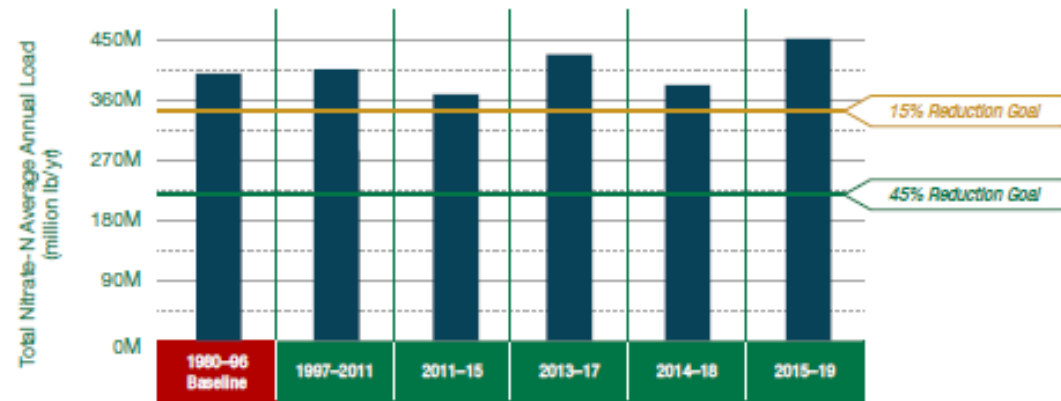


Figure 8.1. Illinois nitrate-nitrogen loads

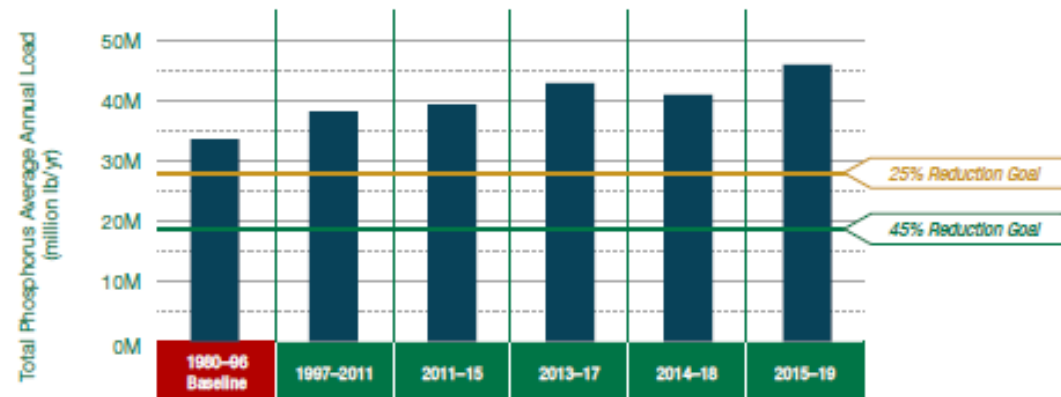
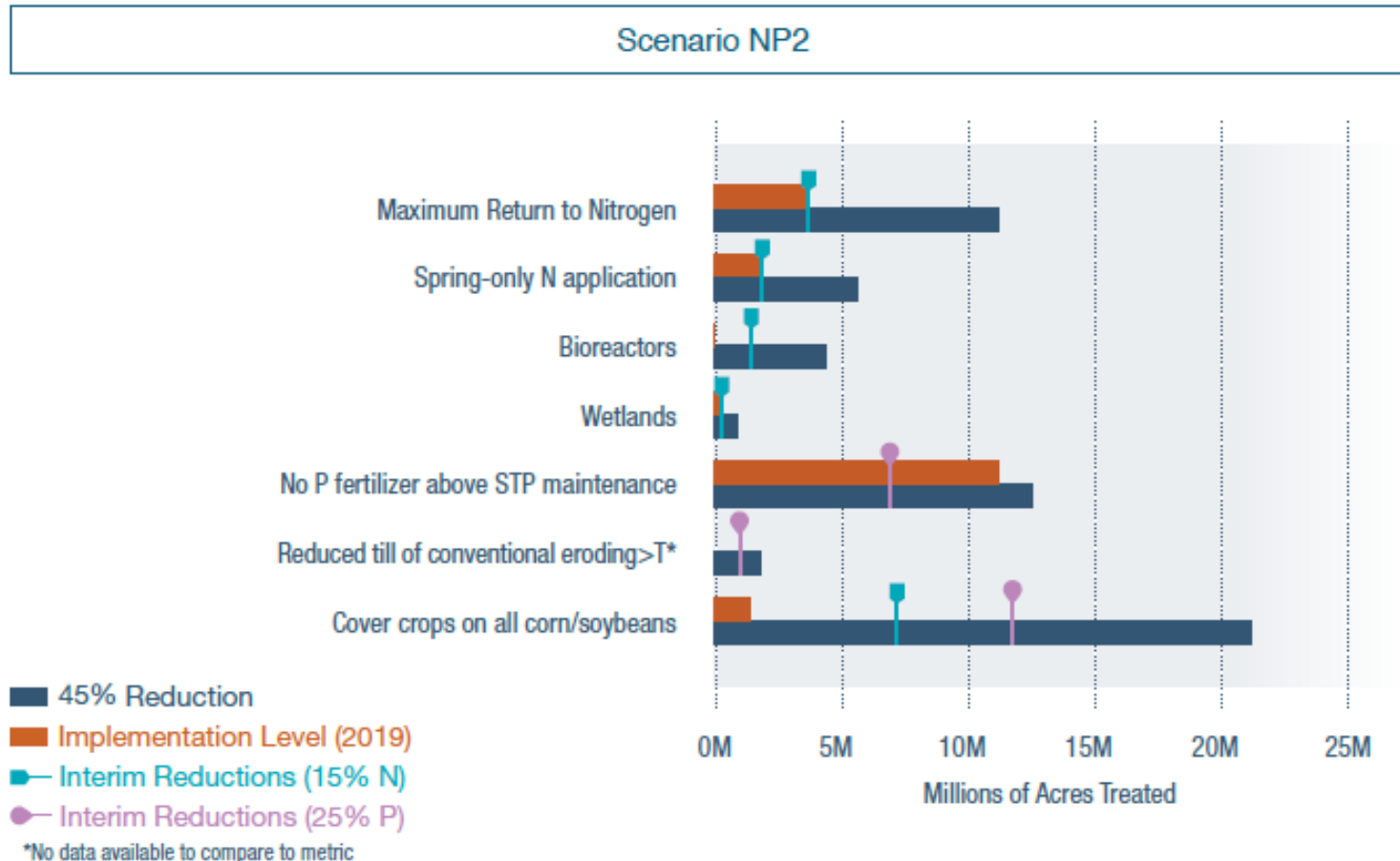


Figure 8.2. Illinois total phosphorus loads



ILLINOIS
NUTRIENT LOSS
REDUCTION STRATEGY

Agricultural Implementation Scenarios



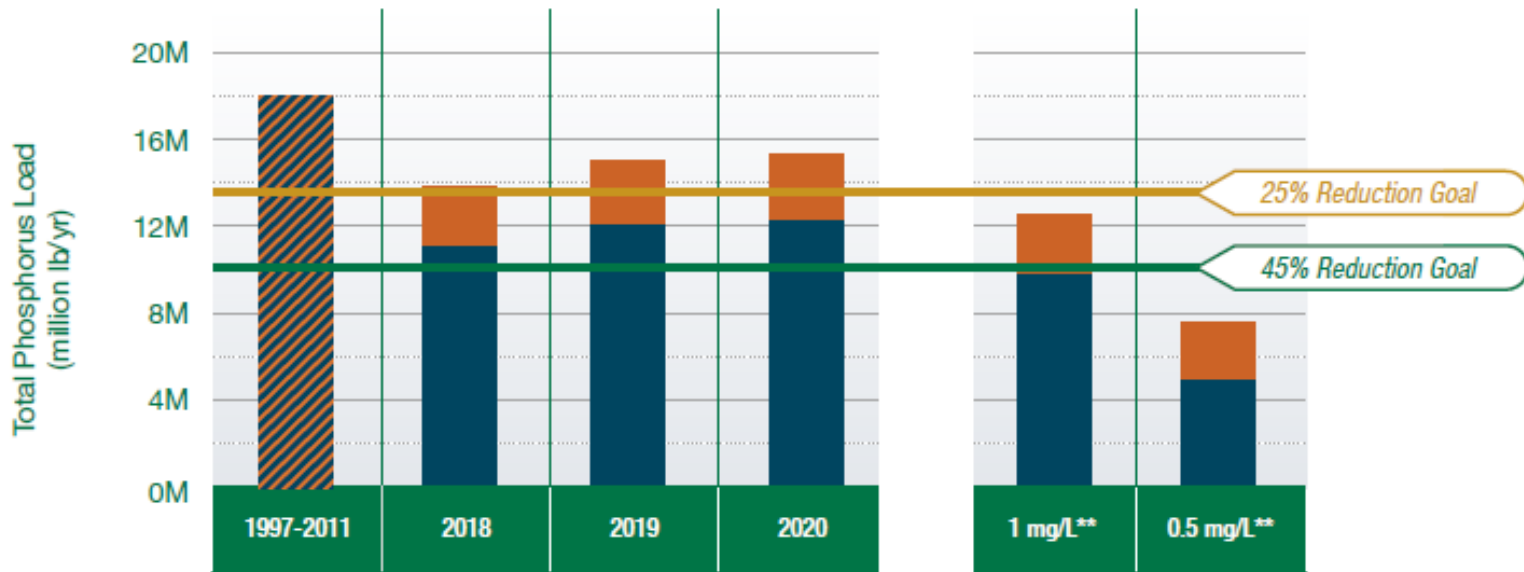
Compare measured implementation data to interim and long-term goals for each scenario

Suggestion:
 Include previous year's implementation Data to show progress over time

Figure 8.3. Agricultural implementation as compared with scenario NP2



Point Source Total Phosphorus Loads



Compare Annual Point Source total phosphorus loads to interim and long-term goals

All Point Source Facilities*

Major Municipal Facilities

Industrial and Minor Municipal Facilities

* Includes all point source facilities not differentiated by type or size

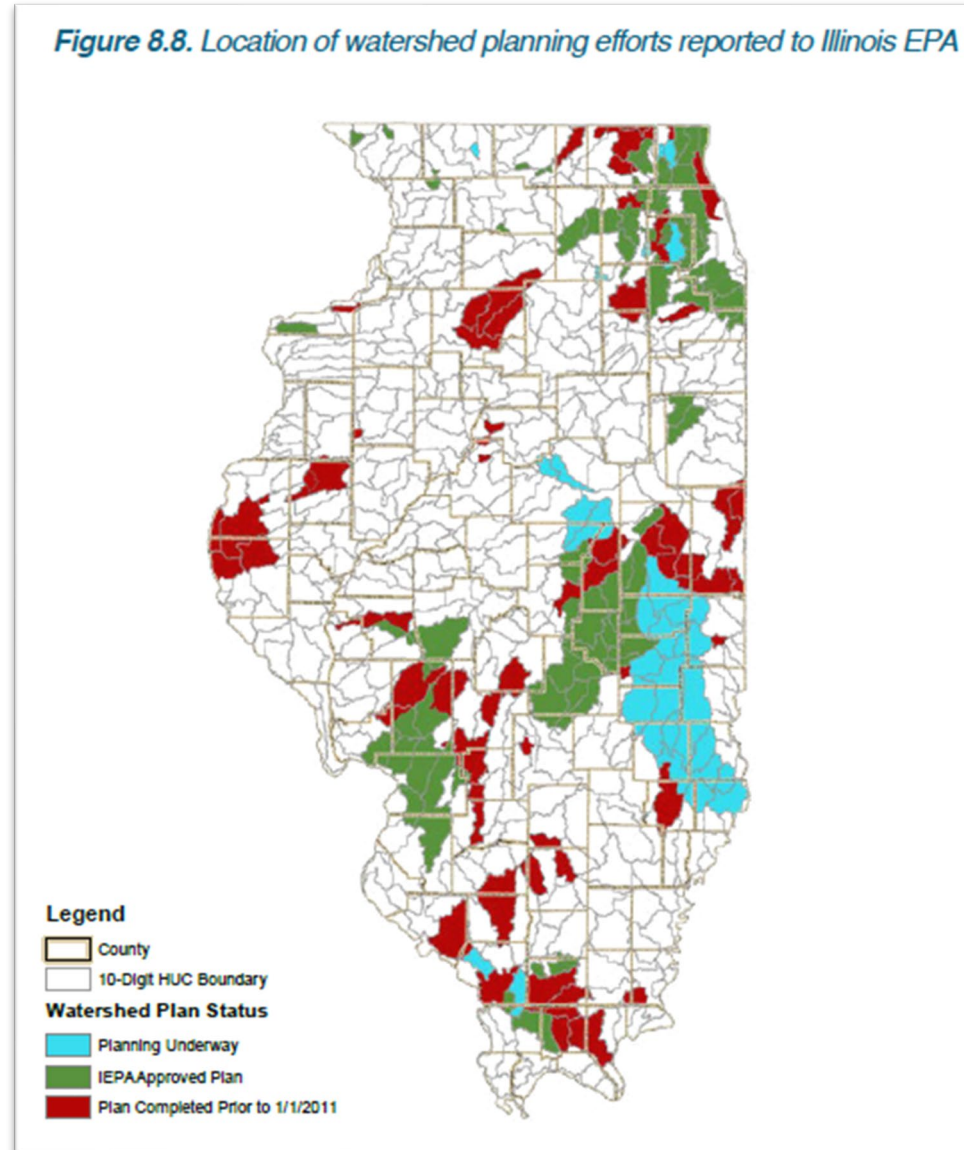
**Estimated future phosphorus point source load

Figure 8.7. Total phosphorus point source load



Illinois EPA Watershed Plans

Completed plans and those underway



ILLINOIS
NUTRIENT LOSS
REDUCTION STRATEGY

Potential Future Resource Needs

- IL Department of Agriculture Partners for Conservation
- Soil and Water Conservation Districts
- Wastewater Treatment Facility upgrades
- Stormwater Practice Adoption
- Water Quality Monitoring
 - Illinois EPA, United States Geological Survey
- NLRS Meetings and Reporting

- Suggestion made to clarify organization(s) who propose funding legislation



Additional Suggestions

- Attempt to include lessons learned, action items and more definitive statements.



NLRS Biennial Report Partner Survey Results



ILLINOIS
NUTRIENT LOSS
REDUCTION STRATEGY

Biennial Report Survey

- A survey was sent to Policy Working Group members to gather thoughts on making the 2023 report more efficient.
- Questions centered on
 - A. Uses (audience)
 - B. Content
 - C. Style and Structure
 - D. Timing



B2: Please provide insights and recommendations for any areas of the report that could benefit from change. 8 responses

- Shorten it.
- Make it more readable.
- Include more analyses.
 - progress pace
 - pollution sources
 - program scalability
 - policy
 - funding
- Draw more conclusions.



Additional Analysis

- Opened discussion on additional analysis for the 2023 Biennial Report
- Asked member to include details:
 - type of data analysis
 - who would perform
 - potential funding
 - timing
- No suggestions offered during meeting



Summary of CH 8 Adaptive Management

- Most of the Adaptive Management chapter will remain the same.
 - Minor adjustments to tables and graphs appearance
- Tables and Graphs will be updated to reflect 2021-2022 data.
- Future Resource Needs will be determined in Spring 2023.
- No additional analysis will be performed.

