

Watershed Outreach Associates Update

Rachel Curry and Nicole Haverback
Watershed Outreach Associates
University of Illinois Extension

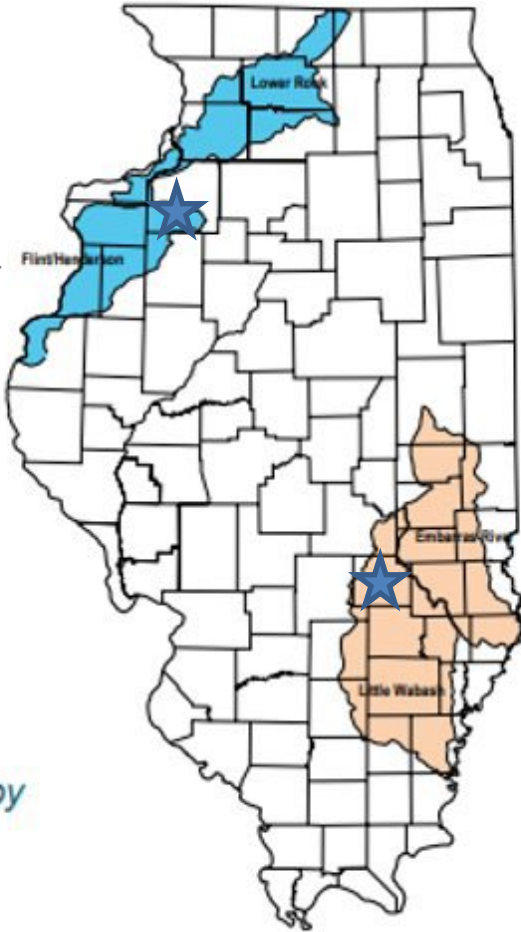


Illinois Extension
UNIVERSITY OF ILLINOIS URBANA-CHAMPAIGN



NLRS Watershed Coordinators Priority Watersheds

I ILLINOIS
Extension
COLLEGE OF AGRICULTURAL, CONSUMER
& ENVIRONMENTAL SCIENCES



Legend

- Coordinator Priority Watershed – Nitrogen
- Coordinator Priority Watershed – Phosphorus



Figure 4.26. Watersheds served by watershed outreach associates

**Nicole Haverback
Effingham**

**Rachel Curry
Galva**



Nitrogen Priority Watershed Projects

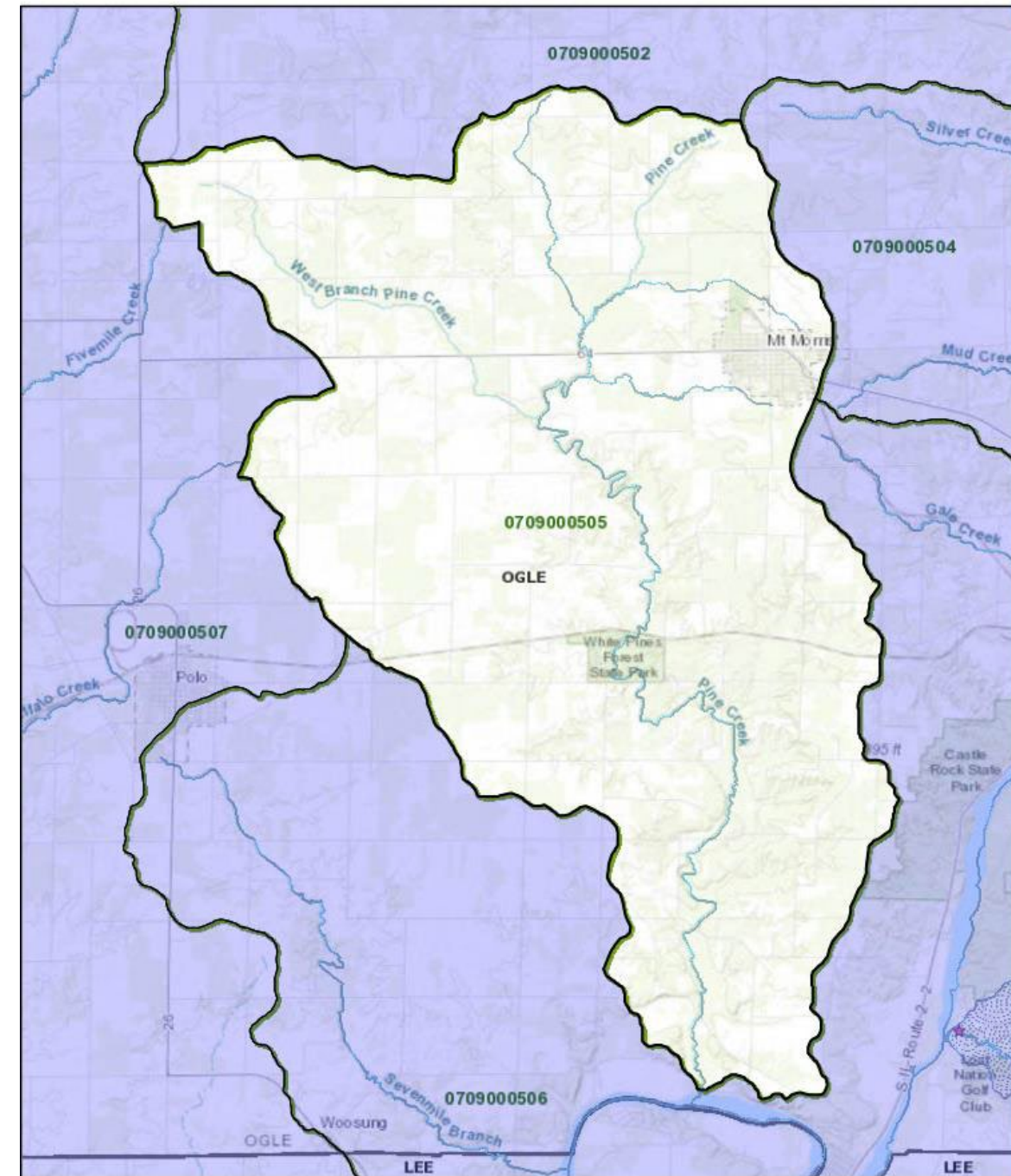
- Pine Creek Watershed Planning
- Mill Creek Watershed Plan
- Mississippi North Central Watershed
- Stormwater at Home Program
- Extension Farm Series
- Bi-State Advanced Soil Health Training
- Certified Livestock Managers Training (CLMT)

Pine Creek Watershed Plan

- University of Illinois Urban and Regional Planning Course
- Pine Creek Watershed (Lower Rock)
- Follow up meeting held February 2022
- Stakeholder interest in starting watershed planning process



Pine Creek Watershed





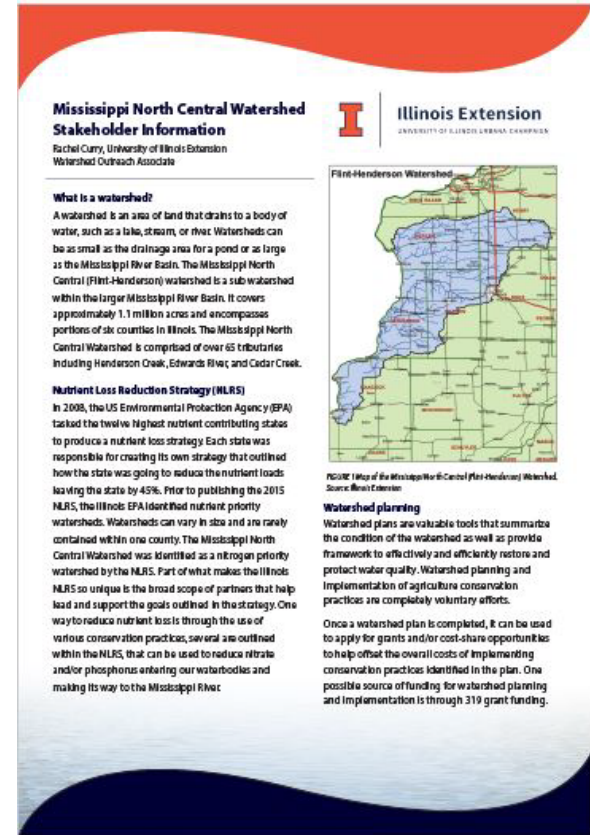
Mill Creek Watershed Plan

- 604b Grant wrapping up
- Rock Island SWCD, Northwater Consulting
- Next steps for an implementation grant
- Woodchip bioreactor installation



Mississippi North Central Watershed Screening

- 319 Grant – Watershed Screening Analysis
- Stakeholder meetings held February 2022
- Held in conjunction with Illinois Farm Bureau and County Farm Bureaus along with Northwater Consulting
- Goal was to provide an update and continue to gauge interest in creating watershed plans
- Next step is to select watersheds for watershed planning



Illinois Extension
UNIVERSITY OF ILLINOIS URBANA-CHAMPAIGN



Rain, Rain, Go Away

- Stormwater program in conjunction with HMSR Co. Extension
- Focus on utilizing rainwater in the home landscape
- Four-part series utilizing Purdue University's rainscaping program
- Build a rain garden in Spring 2023



FOUR-PART SERIES
OCT 20, 27 &
NOV 3 & 10

UTILIZING RAINWATER IN THE HOME LANDSCAPE



Illinois Extension

Rain, Rain, Go Away: Utilizing Rainwater in the Home Landscape
Series Thursdays, Oct 20, 27, Nov 3 & 10, 9 am - Noon
University of Illinois Extension, 321 W 2nd Ave. Milan, IL
Fee is \$40 person. Register at go.illinois.edu/RainwaterSeries

Learn methods for managing stormwater to reduce runoff and make good use of this precious resource on site. Stormwater management methods, plant selection, project design, and landscape maintenance will be discussed. At the conclusion of the course, participants will be invited to participate in the construction of a rain garden in the spring of 2023.

Stormwater runoff is water that is not absorbed into the soil and can come from homes, roads, commercial areas, industrial areas and more. Traditional water management methods include curb and gutter, catch basins, and storm drains. These systems quickly move water away from the site on which it fell, transporting pollutants including oils, chemicals, and soils with it.

Join us as we learn how to keep this precious resource on site, helping to lower the impact on community systems while replenishing ground water and the role of storm water in the Illinois Nutrient Loss Reduction Strategy.

This is a series that builds on knowledge gained at previous sessions. Attendance at each of the four sessions is strongly recommended.



Extension Farm Series

- Henry, Mercer, Rock Island, Stark County Extension Office
- 2022 – Carbon market
 - Dr. Gary Schnitkey, U of I
 - Sarah Sellars, U of I
 - Lou Liva, PCM
- 2023 – Overcoming barriers to adoption





Bi-State Advanced Soil Health Training

- Completed 4th series of trainings
- Final training Aug 18, 2022
- Goal is to train the trainer
- Participants from Illinois and Iowa

Certified Livestock Manager Training (CLMT)

- Provide an update to participants on the Illinois Nutrient Loss Reduction Strategy
- 2022
 - Virtual option
 - In-person – 10 workshops
- 2023
 - Virtual option
 - In-person – 8 workshops over 2 weeks in February





Phosphorus Priority Watersheds

- Illinois Nutrient Loss Reduction Podcast
- Embarras River Watershed Plan Update
- Embarras Regenerative Grazing Group
- Youth Programming: Drone Program and Jasper County Conservation Day

Illinois Nutrient Loss Reduction Podcast

- Produced by Illinois Extension colleagues Rachel Curry, Nicole Haverback, and Todd Gleason
- 46 episodes to date on various conservation practices and updates
- Now available on multiple streaming platforms!
 - TransistorFM
 - Apple Podcasts
 - Google Podcasts
 - Spotify



The Illinois Nutrient Loss Reduction Podcast

A stylized graphic on the right side of the slide. It features a light blue sky, a dark blue body of water at the bottom, and green rolling hills. In the background, there is a white silhouette of a city skyline with several buildings of varying heights.

Embarras River Watershed Plan Update

- Officially began update in January 2021
- Prioritized two HUC 12 subwatersheds
 - **Polecat Creek**
(Coles and Edgar Counties)
 - **Slough**
(Crawford, Lawrence, Richland Counties)
- In October 2022, plan was submitted to IEPA and is currently awaiting approval



Illinois Extension
UNIVERSITY OF ILLINOIS URBANA-CHAMPAIGN





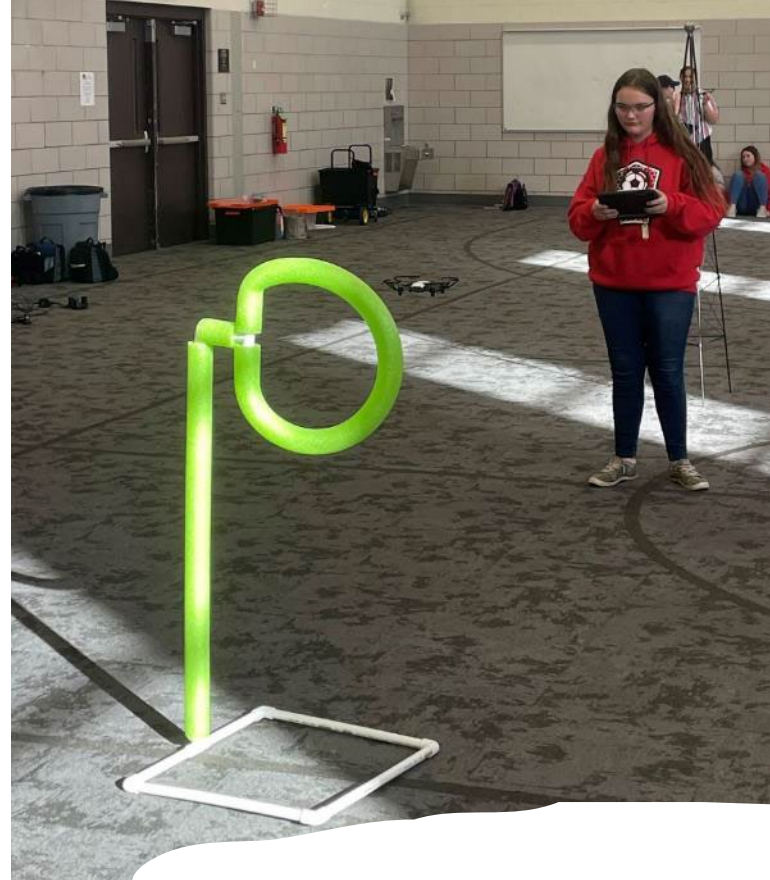
Embarras Regenerative Grazing Group

- Collaboration among Champaign County SWCD, The Land Connection, Illinois Extension, The Pasture Project, Terra Elossa LLC
- SARE PDP grant



Jasper County Conservation Day

- Jasper County Extension and Jasper County Soil and Water Conservation District



Drone Program at Effingham Junior High

- Collaboration with Horticulture Educator
- 1 day instruction, 2-day races

Thank you

Rachel Curry
rccurry@illinois.edu

Nicole Haverback
nlh@illinois.edu