



**Illinois Extension**  
UNIVERSITY OF ILLINOIS URBANA-CHAMPAIGN

# Statewide Green Infrastructure Inventory

**Eliana Brown – Water Quality Specialist, Illinois Extension/IISG**

**Reid Christianson – Crop Sciences, University of Illinois**

*Improving our water  
resources with  
collaboration and  
innovation*



**ILLINOIS**  
**NUTRIENT LOSS**  
REDUCTION STRATEGY

# Inventory Initiatives

- Agricultural Conservation Practice Inventory (in progress)
- Green Stormwater Infrastructure Inventory (proposed)



Photo: CREP Wetland  
Michelle Bloomquist

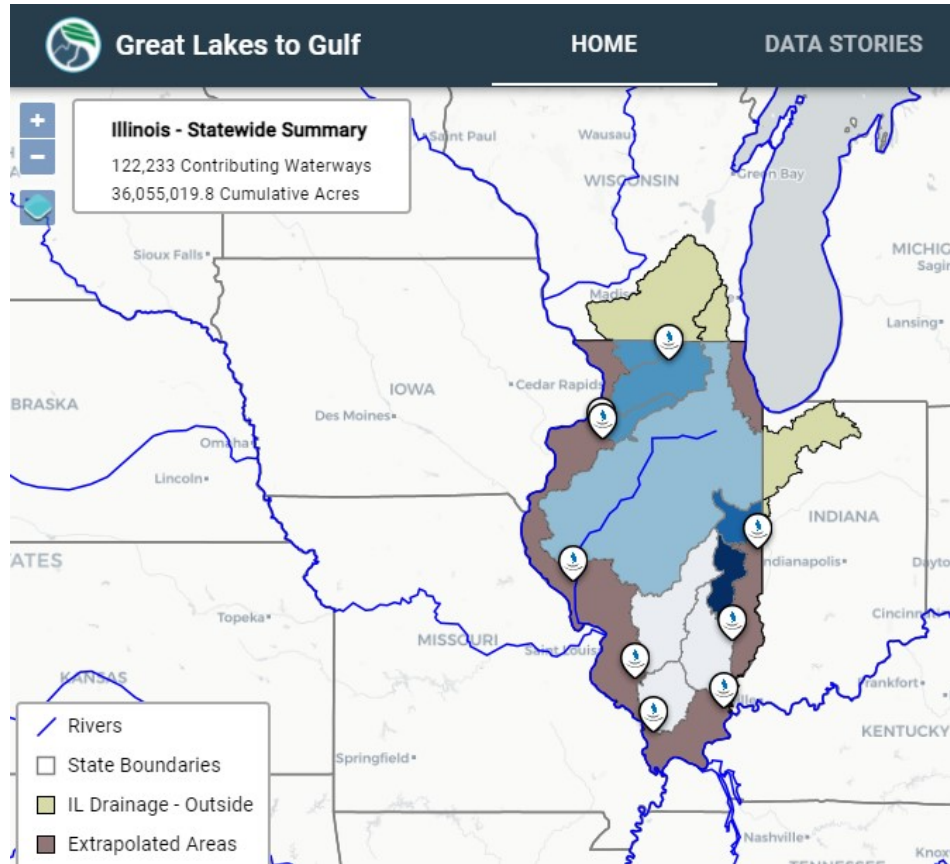


Photo: Urbana Park District Wetland  
C. Eliana Brown



**ILLINOIS**  
NUTRIENT LOSS  
REDUCTION STRATEGY

# Tracking Agricultural Conservation



## Ongoing efforts

Partner with the Great Lakes to Gulf Virtual Observatory

- Online conservation practice viewer
- Online data entry portal

Add NEW conservation practices to inventory

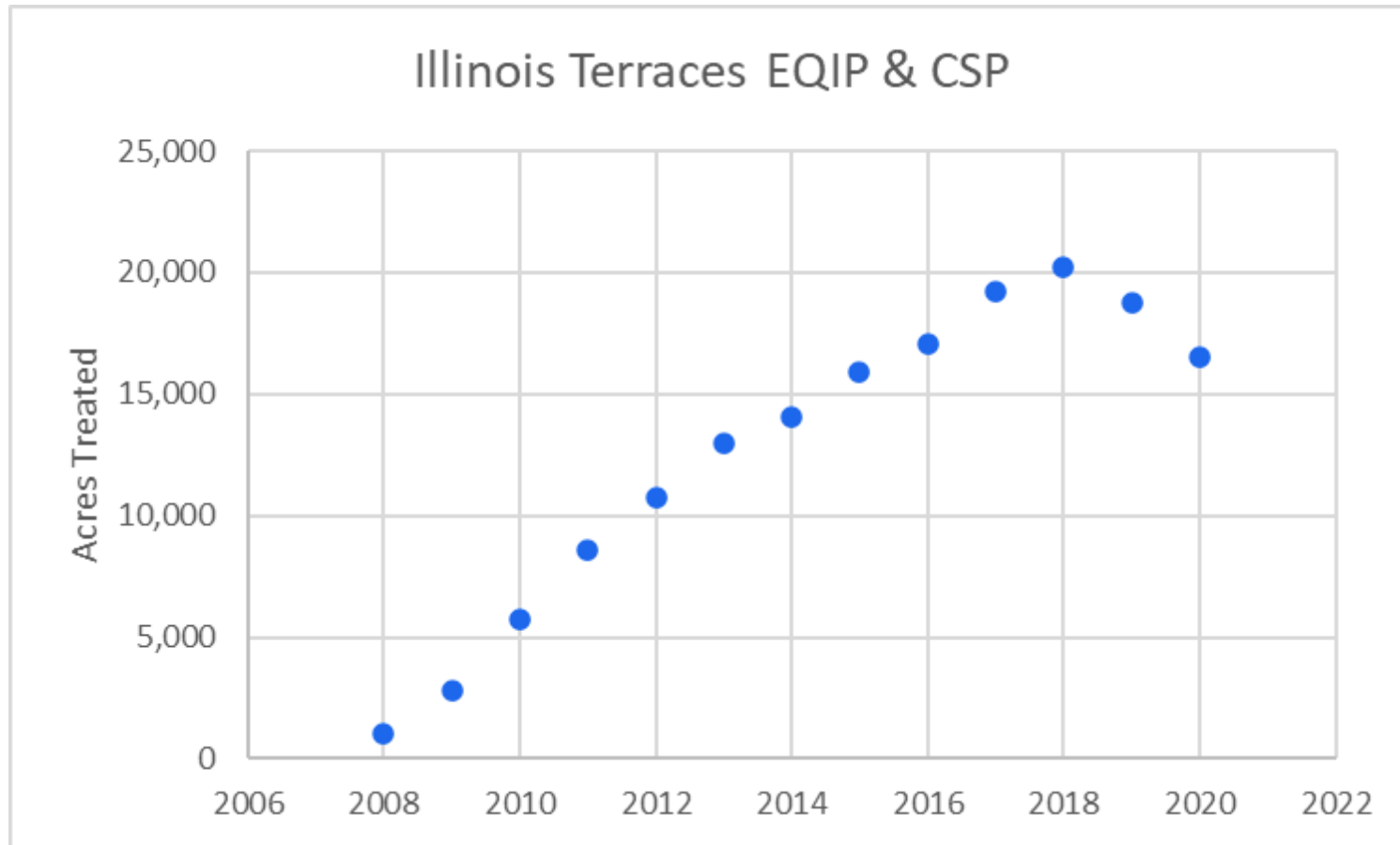
- Terraces: 40% P reduction in non-tiled fields
- Saturated Buffers: 40% Nitrate-N reduction

Evaluation of new data sources



**ILLINOIS**  
NUTRIENT LOSS  
REDUCTION STRATEGY

# Tracking Agricultural Conservation: Initial Look

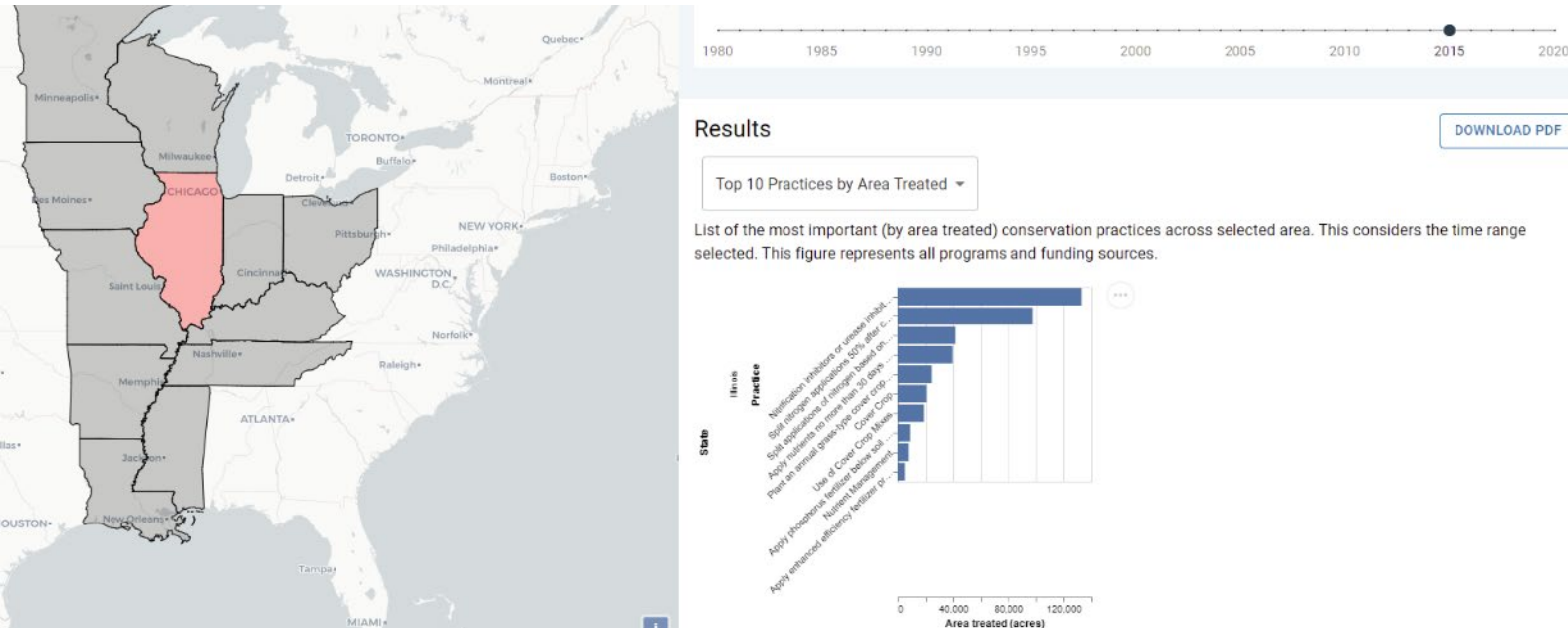


## Terraces

- NRCS practice life: 10 years
- 60 to 65 linear feet treat an acre
- ~1.4 million feet of terraces since 2008 (EQIP and CSP)



# Tracking Agricultural Conservation: Initial Look



## Developing data reports

- Top practices
- Funding
- Area treated
- Practice counts



**ILLINOIS**  
NUTRIENT LOSS  
REDUCTION STRATEGY



# Tracking Green Infrastructure: background

**In 2018, USWG began discussing a statewide Green Infrastructure (GI) Inventory as an appropriate way to measure Illinois' urban stormwater practice implementation for NLRS.**



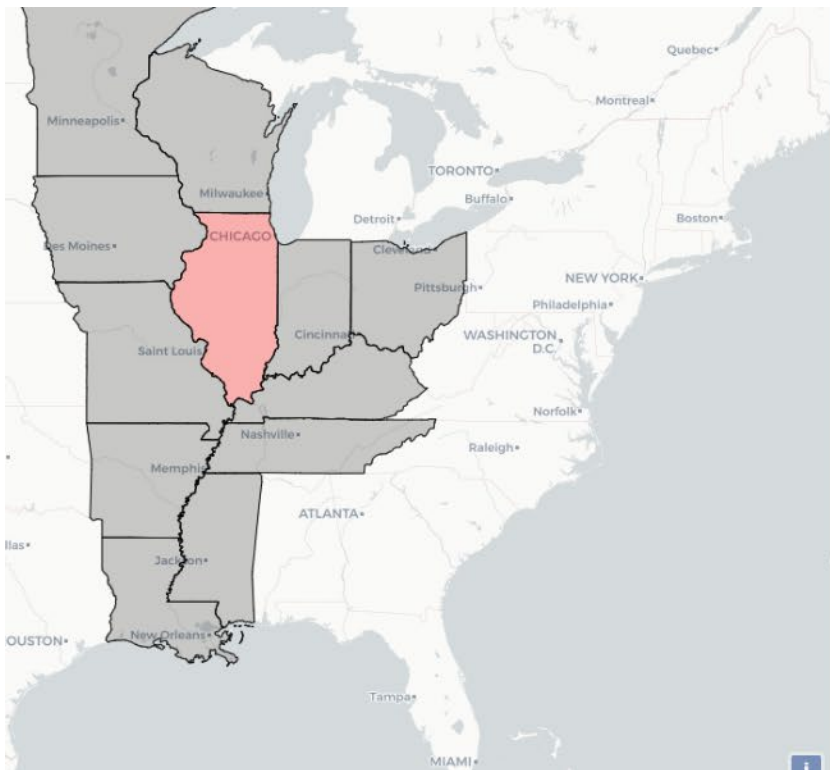
Photos, clockwise, from top left:  
stormwater pond, green roof,  
permeable pavers, stormwater  
wetland, and rain garden.  
C. Eliana Brown



**ILLINOIS**  
**NUTRIENT LOSS**  
**REDUCTION STRATEGY**

# How can it be accomplished?

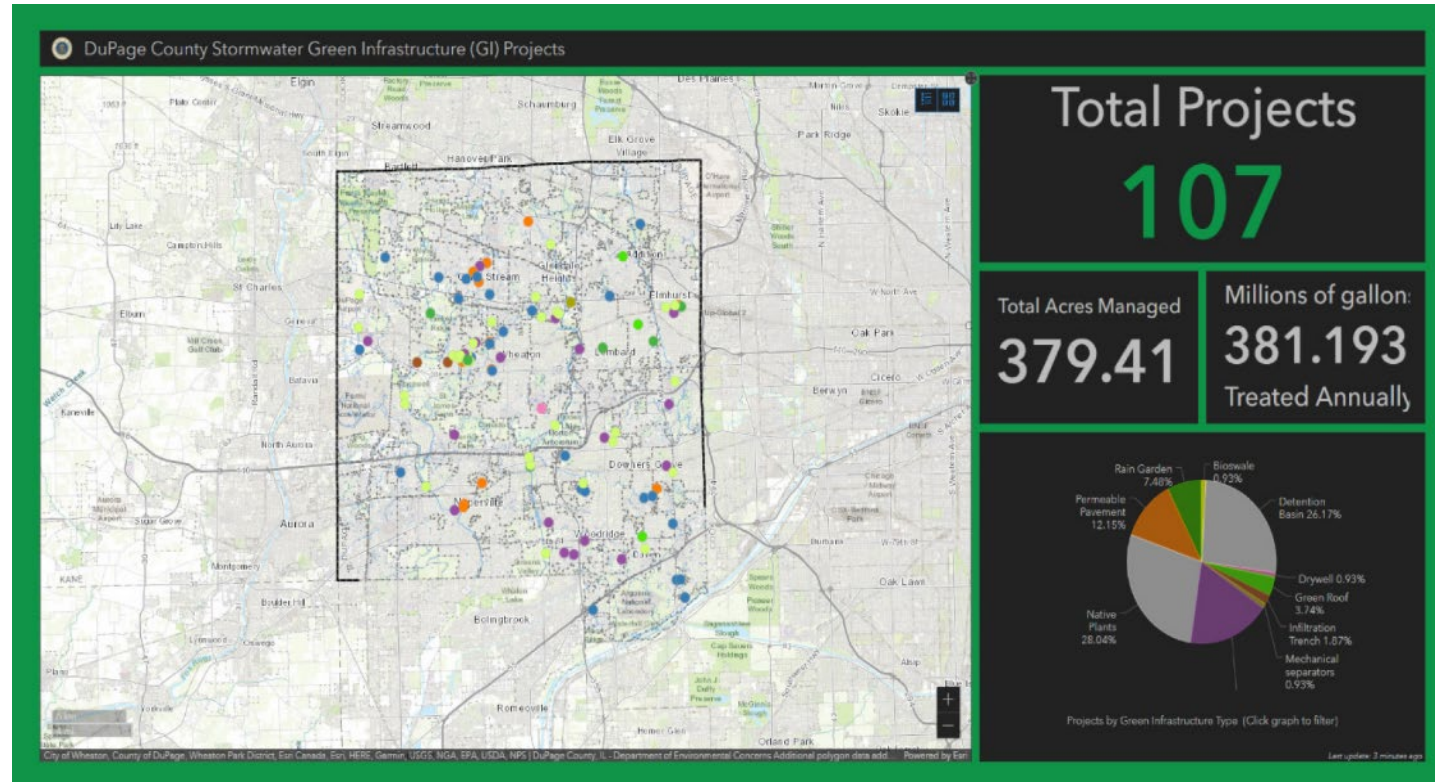
**Proposal:** build on the GLTG agricultural efforts by adding an urban stormwater practice ESRI GIS layer.



**ILLINOIS**  
NUTRIENT LOSS  
REDUCTION STRATEGY

# Existing Local Inventories

## DuPage County



Contact: Mary Beth Falsey [falsey@dupageco.org](mailto:falsey@dupageco.org)

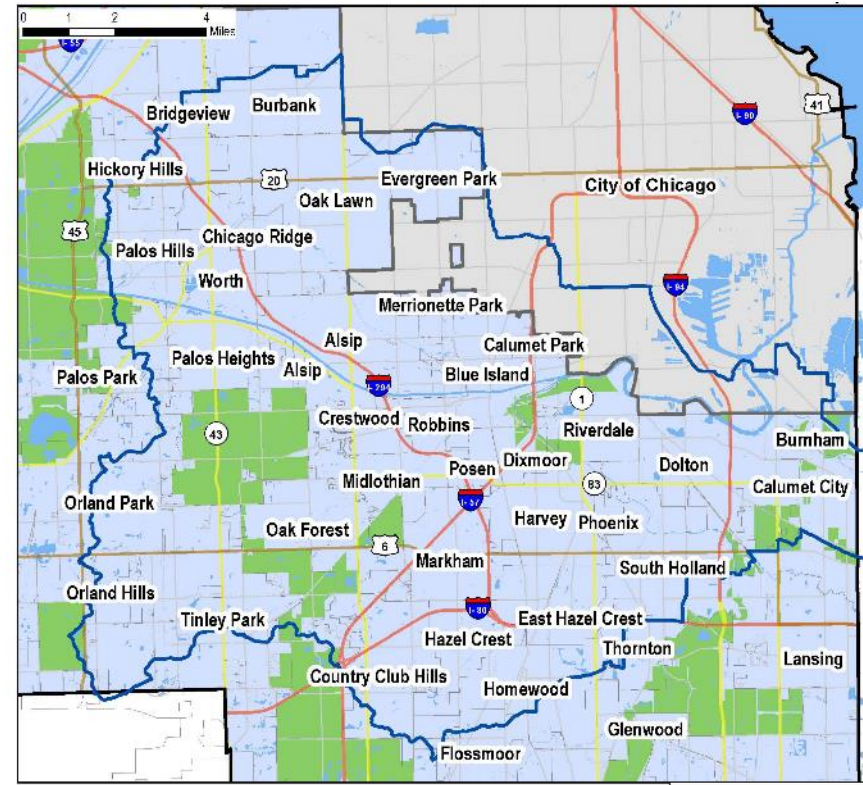


**ILLINOIS**  
**NUTRIENT LOSS**  
**REDUCTION STRATEGY**



# Existing Local Inventories

## Calumet Stormwater Collaborative (GIBI)



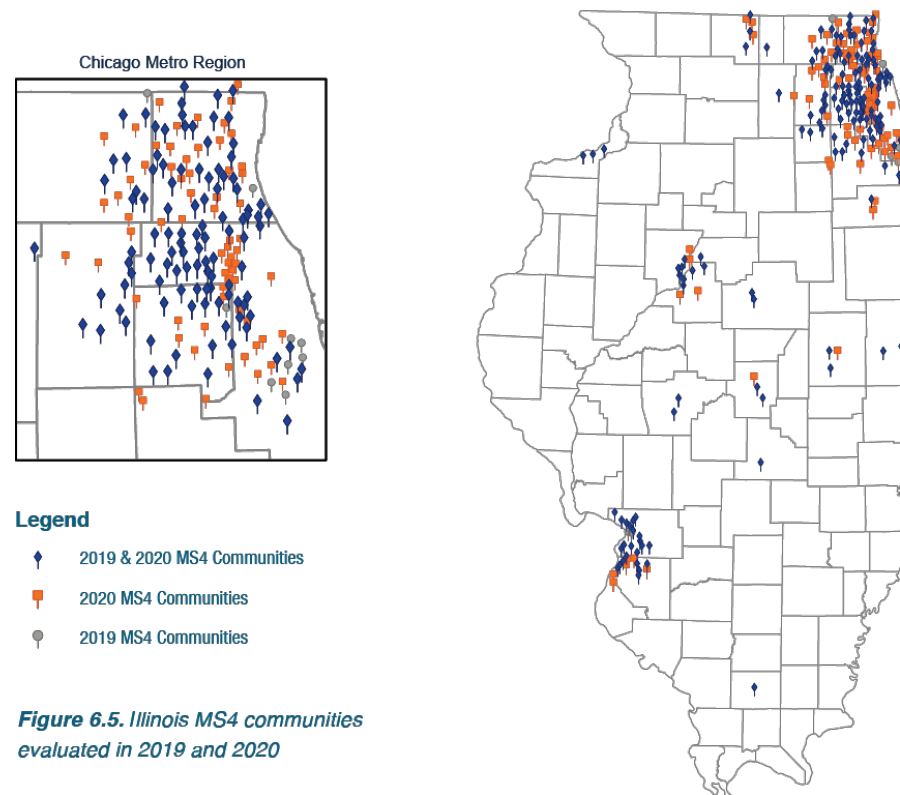
Contact: Justin Keller [jkeller@metroplanning.org](mailto:jkeller@metroplanning.org)



**ILLINOIS**  
NUTRIENT LOSS  
REDUCTION STRATEGY

# How does this advance NLRS goals?

## Better tracking for NLRS Biennial reporting



*Figure 6.5. Illinois MS4 communities evaluated in 2019 and 2020*



**ILLINOIS**  
NUTRIENT LOSS  
REDUCTION STRATEGY

# How else can it be used?

*Adapted from the CSC GIBI:*

- Assess the location, performance and maintenance status of existing green infrastructure.
  - Quantify the benefits of green infrastructure.
  - Strategically plan investments in new green infrastructure where it will have the greatest impact.
  - Advance training programs and best management practices to bolster implementation and maintenance of green infrastructure.
- 
- Be the basis for Extension BMP fact sheets and case studies that incorporate information about GI and how it is used in Illinois communities. Can inform educational programs and assist in decision making.



Photo: C. Eliana Brown



**ILLINOIS**  
**NUTRIENT LOSS**  
**REDUCTION STRATEGY**

# Thank you!

## Contact info:

Lisa Merrifield lmorrisn@Illinois.edu

Eliana Brown brown12@Illinois.edu

Reid Christianson reiddc@Illinois.edu



**ILLINOIS**  
**NUTRIENT LOSS**  
REDUCTION STRATEGY