

2021 Biennial Report

Data and Production Schedule

Eliana Brown, Water Quality Specialist, Illinois Extension/Illinois-Indiana Sea Grant



Drone photo by Dennis Bowman



ILLINOIS
NUTRIENT LOSS
REDUCTION STRATEGY

Biennial Report Tracking Measures

Biennial Reports are structured to report data on tracking measures by each of the three sectors.



NLRS Logic Model





Resources Measures and Outreach Measures

Resources and Outreach Measures data are from the Reporting Spreadsheet.

Reporting Spreadsheets from Ag and stormwater partners are due **JANUARY 31, 2021**. Send to kgardin2@Illinois.edu



NLRS Logic Model

Point sources:

Illinois Association of Wastewater Agencies coordinates their Reporting Spreadsheets.





Examples: Agricultural Resources and Outreach

Table 4.1. Outreach activities and associated attendance

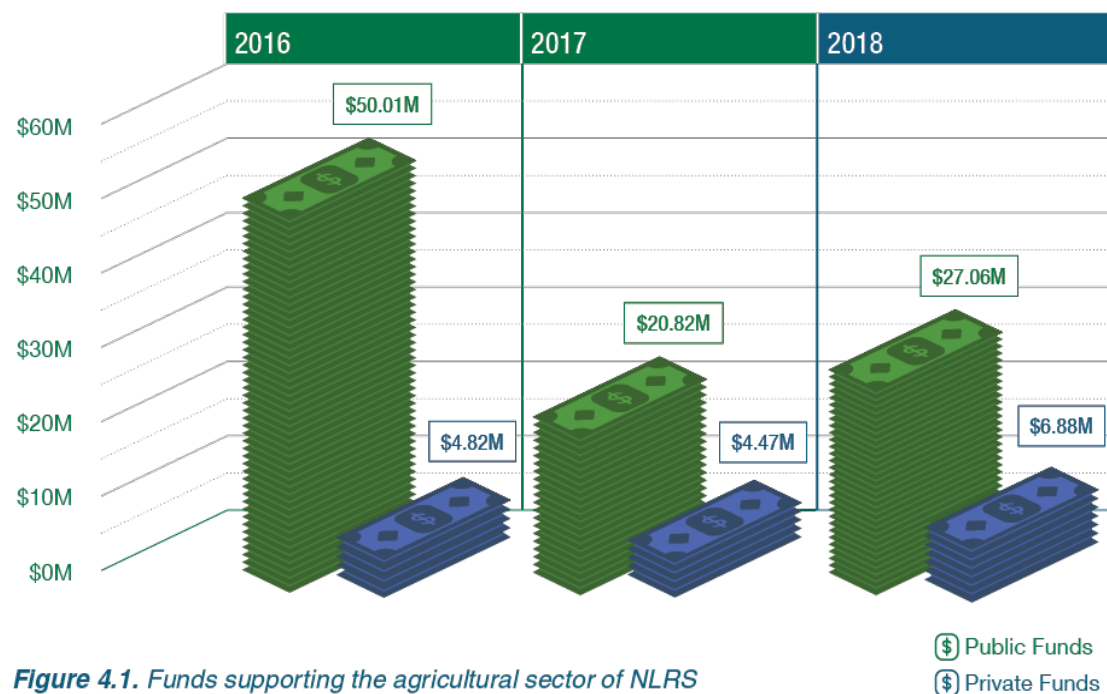


Figure 4.1. Funds supporting the agricultural sector of NLRS

	2015–2016		2017–2018	
Type of Outreach	Number of Events	Total Attendance	Number of Events	Total Attendance
Presentations	457	16,000	602	38,155
Field Days	130	3,692	204	18,493
Workshops	607	12,695	423	18,478
Conferences	27	6,935	42	9,355
Total	1,221	39,325	1,271	84,481



Photo: Haley Haverback-Gruber





Examples: Point Source Resources and Outreach

Table 5.1. Funds supporting 2017–18 nutrient reduction-related activities in the point source sector for IAWA reporting agencies and reporting watershed groups

Nutrient reduction-related activity	2017 Totals	2018 Totals
Capital improvement	\$26,025,314	\$186,175,448
Operations and maintenance	\$934,474	\$2,398,542
Feasibility studies or permit required projects	\$1,255,866	\$2,328,001
Staff	\$1,979,250	\$2,283,170
Other	\$135,800	\$555,500
Total	\$30,330,704	\$193,740,661

Table 5.2. 2017-18 Point source outreach activities reported by IAWA facilities and reporting watershed groups

Type of Activity	Number of Events	Attendance
Conferences	2	140
Field Days	2	160
Presentations	23	2467
Workshops	2	160
Totals	29	2927



Photo: MWRDGC





Land & Facilities Measures

Land & Facilities Measure Data are from:

- Ag federal and state funding (Ag Tracking Group coordinates)
- Point source records (Illinois EPA coordinates)
- Stormwater federal and state funding and MS4 reports (Illinois EPA and



NLRS Logic Model



ILLINOIS
NUTRIENT LOSS
REDUCTION STRATEGY



Examples: Agricultural Land and Facilities

Conservation Reserve Program

Table 4.4 Acres in CRP Wetlands and Buffers

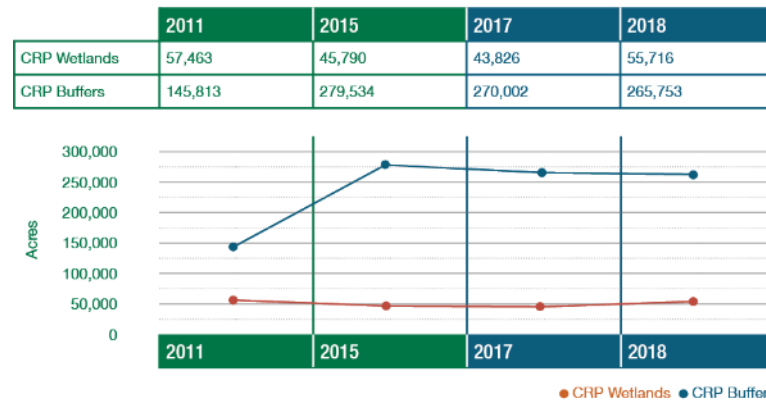


Figure 4.2. Acres in CRP wetlands and buffers.

Table 4.5. Acres in CRP Perennials/Energy/Pasture

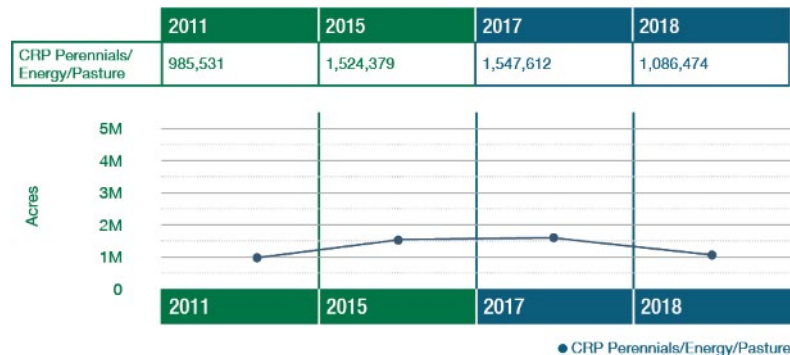


Figure 4.3. Acres in CRP perennials, energy, and pasture.

Cover Crops

Table 4.6. Acres in Cover Crops reported by producers to FSA

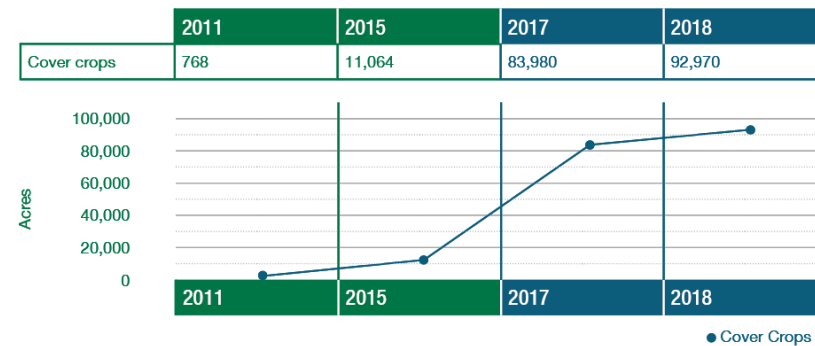


Figure 4.4. Acres in cover crops reported by producers to the Farm Service Agency.



ILLINOIS
NUTRIENT LOSS
REDUCTION STRATEGY



Example: Point Source Land and Facilities

Top 10 Wastewater Treatment Facilities for Total Phosphorus Removal

Facility Name	NPDES Permit	2011 TP Load (lb/yr)	2018 TP Load (lb/yr)	Reduction (lb/yr)	Percent Reduction
MWRDGC-Stickney	IL0028053	2,344,030	707,230	1,636,800	70
MWRDGC-Kirie	IL0047741	141,985	40,012	101,973	72
MWRDGC-Calumet	IL0028061	2,058,425	1,990,902	67,523	3
Sangamon County Water Reclamation District-Spring Creek	IL0021989	113,296	49,419	63,877	56
North Shore Sanitary District-Gurnee	IL0035092	116,070	52,700	63,370	55
Village of Fox Lake	IL0020958	76,657	17,808	58,849	77
City of Belleville	IL0021873	67,701	11,040	56,661	84
DuPage County Public Works	IL0065188	73,625	17,683	55,942	76
Village of Plainfield	IL0074373	63,469	7,918	55,551	88
Greater Peoria Sanitary and Sewage District	IL0021288	96,827	42,477	54,350	56

Facility Name	NPDES Permit	Average Flow	Average TP Concentration (mg/L)
MWRDGC-Stickney	IL0028053	775	0.31
MWRDGC-Kirie	IL0047741	38.48	0.27
MWRDGC-Calumet	IL0028061	247	2.6
Sangamon County Water Reclamation District-Spring Creek	IL0021989	34.98	0.48
North Shore Sanitary District-Gurnee	IL0035092	15.4	1.11
Village of Fox Lake	IL0020958	9.19	0.63
City of Belleville	IL0021873	5.32	0.65
DuPage County Public Works	IL0065188	7.59	0.72
Village of Plainfield	IL0074373	4.59	0.58
Greater Peoria Sanitary and Sewage District	IL0021288	22.4	0.64



Water Measures

Water Measures are in the Science Assessment (Dr. Greg McIlssac).



NLRS Logic Model





Examples: Water Measures

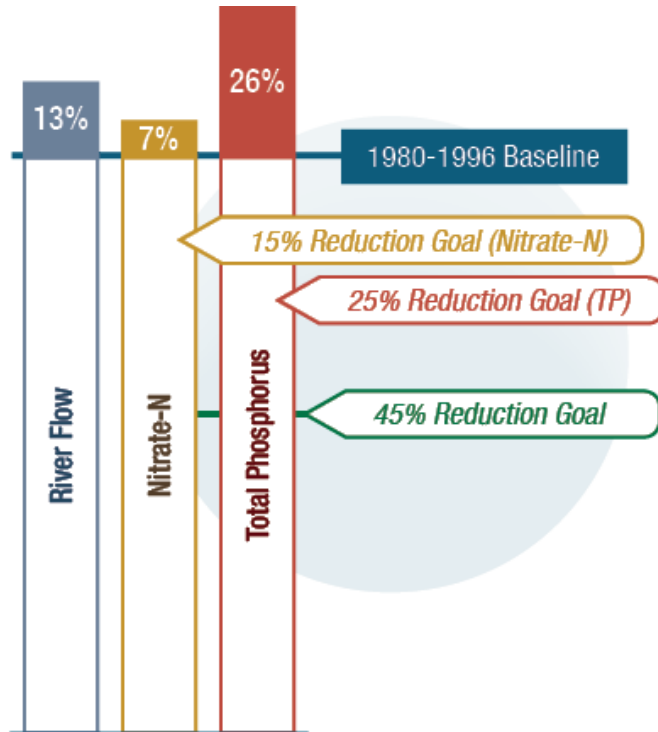
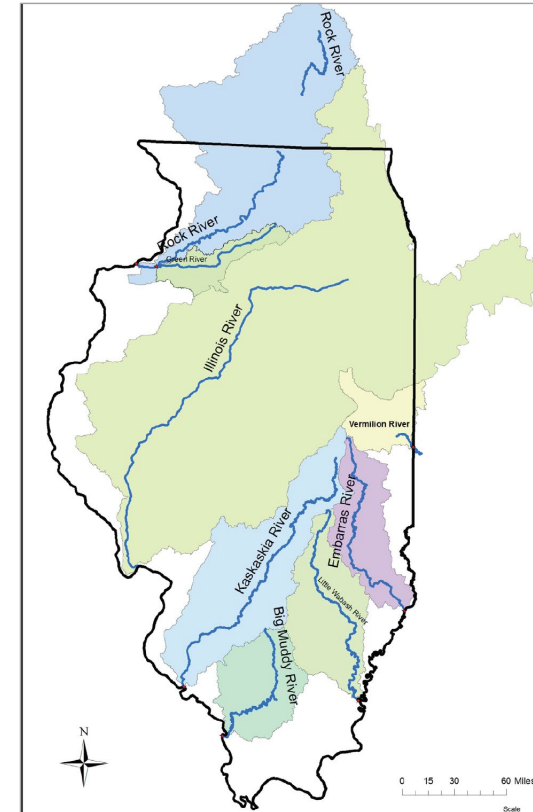


Figure 1.3. Percent increase from baseline to average 2013–2017



Statewide loads based on 8 major river systems



Biennial Report Partner Updates

Biennial Reports includes lists of partner programs and narrative updates.

Narrative updates from 2019 and 2020 are due **JANUARY 31, 2021**.

Length: half-page to one-page

Send to kgardin2@Illinois.edu



ILLINOIS
NUTRIENT LOSS
REDUCTION STRATEGY

Examples: Agricultural Partner Updates

Non-Governmental Organization Programs and Projects

4R Metrics	p.79
4R4U: A Nutrient Stewardship Partnership.....	p.70
5-Year Soil Health Transition	p.74
Advanced Soil Health Training	p.73
Building Connections with Absentee Farmland Owners.....	2017 Biennial Report p.42
Cover Crop Training Initiative	Illinois NLRS p.6-10
Crop Grower Satellite Imagery Analysis	p.76
Demonstration Farm Partnership	Illinois NLRS p.6-11
Field Laboratories	p.70
The Franklin Demonstration and Research Farm	p.71
Free, Confidential Water Testing Program.....	2017 Biennial Report p.44
Illinois Alphabet Soup Group.....	p.75
Illinois Buffer Partnership	p.71
Illinois Cover Crop Programs	p.72
Illinois Sustainable Agriculture Partnership.....	p.73
Keep it 4R Crop Program.....	p.76
Leadership for Midwestern Watersheds	p.80
Local Farmer-Led Networks.....	p.76
N-WATCH™	p.78
Nitrogen Rate Trials.....	p.76
Nutrient Research & Education Council.....	p.80
Nutrient Stewardship Grant Program	p.83
Precision Conservation Management.....	p.85
Risk Management Conference.....	p.75
The S.T.A.R. Farmer Recognition Program	p.74
Upper Macoupin Watershed Regional Conservation Partnership Program.....	p.87
Water Supply & Industry Partnerships.....	p.78
Women for the Land.....	p.88

New Initiatives Supporting Nutrient Reduction Goals

Edge-of-Field Partnerships for Saturated Buffers	88
Edge-of-Field Partnerships for Woodchip Bioreactors	89
Fall Covers for Spring Savings	89
Illinois Extension Watershed Outreach Associates	90

We want your program metrics!

If you have graphics, please use vector formats such as:
.svg, .eps, .pdf



ILLINOIS
NUTRIENT LOSS
REDUCTION STRATEGY

Biennial Report Photos

We need your help! Partner photos make the Biennial Reports more meaningful.



Photos are due **JANUARY 31, 2021.**

Send to kgardin2@Illinois.edu



ILLINOIS
NUTRIENT LOSS
REDUCTION STRATEGY

Biennial Report Photo Topics

Water bodies

Mississippi River
Illinois Rivers/Lakes

Agriculture

GENERAL: Corn Field/Soybean Field and Producers
OUTREACH: Ag Field Days, etc.
LAND & FACILITIES: Nutrient Management/Conservation Tillage/Cover crops/Wetlands/Perennials/Bioreactor/Filter strips
Programs: CRP, CREP, etc.

Point Source

GENERAL: Wastewater Treatment Plants and Workers
OUTREACH: Conferences/Wastewater Treatment Plant Tours, etc.
LAND & FACILITIES: Phosphorus reduction facilities

Urban Stormwater

GENERAL: Rainstorm/Storm drain
OUTREACH: Green infrastructure tour/Leaf information/Natural Lawncare Info
LAND & FACILITIES: Rain Garden/Bioswale/Porous Pavement/Green Roof

Working Group Meetings

Any of your photos!

150dpi+ Bigger = better. .jpg or .tiff.

Same format the file was in when taken on phone/camera.



ILLINOIS
NUTRIENT LOSS
REDUCTION STRATEGY

Biennial Report Production Schedule

BIENNIAL REPORT TASK	DATE DUE
Prepared data due to Extension	15-Mar
Compile first drafts of all chapters	15-Mar
Update tables/graphs: Land Measures	31-Mar
First round of editing	31-Mar
Second round of editing	7-Apr
First draft due to PWG	15-Apr
Executive Summary Infographic design	16-Apr
Comments due back to Extension	30-Apr
Draft due to Steering Committee and Agency Directors	15-May
Comments due back to Extension	30-May
Final changes before design	7-Jun
Text and photos (and alt-text) to graphic designer	15-Jun
Copy editing	15-Jul
Final changes	20-Jul
Due to printer	7-Aug
Biennial Report completed	31-Aug
Online version with Appendices	31-Aug



ILLINOIS
NUTRIENT LOSS
REDUCTION STRATEGY

Biennial Report Production Schedule

BIENNIAL REPORT TASK	DATE DUE
Prepared data due to Extension	15-Mar
Compile first drafts of all chapters	15-Mar
Update tables/graphs: Land Measures	31-Mar
First round of editing	31-Mar
Second round of editing	7-Apr
First draft due to PWG	15-Apr
Executive Summary Infographic design	16-Apr
Comments due back to Extension	30-Apr
Draft due to Steering Committee and Agency Directors	15-May
Comments due back to Extension	30-May
Final changes before design	7-Jun
Text and photos (and alt-text) to graphic designer	15-Jun
Copy editing	15-Jul
Final changes	20-Jul
Due to printer	7-Aug
Biennial Report completed	31-Aug
Online version with Appendices	31-Aug



ILLINOIS
NUTRIENT LOSS
REDUCTION STRATEGY

Questions?



brown12@illinois.edu
Illinois Extension



ILLINOIS
NUTRIENT LOSS
REDUCTION STRATEGY