

Call2Recycle, Inc.

Changing habits. Inspiring action.™

ILLINOIS BATTERY STEWARDSHIP PLAN

Pursuant to Public Act 103-1033

Submitted to:

Illinois Environmental Protection Agency
1021 North Grand Ave. East
Springfield, IL 62794-9276



Submitted by:

Call2Recycle, Inc.
913 Cobb Pkwy N Suite C
Marietta, GA 30062
www.call2recycle.org

TABLE OF CONTENTS

I. INTRODUCTION 4

 A. Illinois Portable and Medium-Format Battery Stewardship Act 4

 B. Citations 5

II. STEWARDSHIP ORGANIZATION 5

 A. Citations 5

 B. Call2Recycle, Inc. 6

 C. Management and Administration 6

III. REGISTERED PRODUCERS AND BRANDS 6

 A. Citations 6

 B. Battery Producers and Brands 6

IV. FUNDING AND BUDGET 7

 A. Citations 7

 B. Financing the Stewardship Plan 7

 C. Pro Forma Budget 7

V. COLLECTION, SAFETY AND CONVENIENCE 9

 A. Citations 9

 B. Free Collection 9

 C. Eligibility for Battery Collection Sites 9

 D. Accessibility & Convenience 11

 E. Collection of Batteries 15

 1. Small Volume Solution 15

 2. Large Volume Solution 15

 3. Damaged, Defective and Lithium-ion Batteries Over 300 watt-hours Solution 16

VI. SAFETY TRAINING 17

 A. Citations 17

 B. Safety and Compliance 17

 C. Training 17

VII. FAIR COMPENSATION 18

 A. Citations 18

 B. GreenVantage Program 18

VIII. TRANSPORTATION AND RECYCLING 18

 A. Citations 18

 B. Record Keeping - Commitment to Transparency and Accountability in Downstream Management 19

 C. Commitment to Industry Standards & Certifications 19

 D. Transporters 19

 E. Sorting Facilities 20

 F. Processing Facilities 21

G. Recycling Efficiency Rate.....31

IX. Education & Outreach.....31

A. Citations31

B. Education & Outreach Practices31

C. Education & Outreach Methods32

X. PERFORMANCE GOALS.....34

A. Citations34

B. Collection Rate34

C. Public Awareness35

XI. ANNUAL REPORT AND PLAN AUDIT37

A. Citations37

B. Annual Report39

C. Plan Audit40

APPENDIX A - PRODUCERS IN CALL2RECYCLE PROGRAM40

APPENDIX B: EXEMPT PRODUCER WHEN BATTERY STEWARDSHIP PLAN IS APPROVED.....46

APPENDIX C - BRANDS IN CALL2RECYCLE PROGRAM47

APPENDIX D – ACCESSIBILITY MAP – ILLINOIS52

APPENDIX E – PUBLIC COLLECTION SITES53

APPENDIX F – CALL2RECYCLE LOCATOR63

I. INTRODUCTION

Call2Recycle Stewardship, Inc., (Call2Recycle) which administers the Call2Recycle® program, is a non-profit public service organization. Since 1994, on behalf of battery producers, Call2Recycle has managed a rechargeable battery collection and recycling program in Illinois. Pursuant to Illinois Public Act 103-1033, Call2Recycle is submitting this plan to create and manage a mandatory battery stewardship program for all battery chemistries, expanding its existing rechargeable program to include primary and medium format batteries.

Call2Recycle's plan builds and learns from the past 30+ years of operating in Illinois. With the participation of retailers, businesses, manufacturers, and residents, and the passage of Illinois' extended producer responsibility legislation, Call2Recycle seeks to enable Illinois to collect primary, rechargeable and medium format batteries as well as those same batteries that are damaged or defective. Per Public Act 103-1033 section 1, an in-scope primary battery is defined as a non-rechargeable battery that weighs up to 25 pounds, including alkaline, carbon-zinc, and lithium metal batteries, and an in-scope rechargeable battery is defined as a battery that contains one or more voltaic or galvanic cells, electrically connected to produce electric energy, designed to be recharged, that weighs not more than 25 pounds and has a Watt-hour rating of no more than 2,000 Watt-hours, unless an exclusion applies. Further references to primary and rechargeable batteries in this plan mean the batteries meet these definitions in the Public Act.

A. Illinois Portable and Medium-Format Battery Stewardship Act

The Illinois Portable and Medium-Format Battery Stewardship Act requires, by July 1, 2025, that each producer selling or offering for sale a primary or rechargeable battery in the State shall individually or as part of a battery stewardship organization submit a Plan to the Agency for review.

The Battery Stewardship Plan must include, at a minimum, all the following requirements:

- (1) lists and provides contact information for each producer, battery brand, and battery-containing product brand covered in the plan, including identifying producers who have contractually accepted responsibility as a producer in accordance with paragraph (3) of the definition of producer in this Act;*
- (2) proposes performance goals, consistent with Section 30, including establishing performance goals for each of the next 3 upcoming calendar years of program implementation;*
- (3) describes how the battery stewardship organization will make retailers aware of their obligation to sell only covered batteries and battery-containing products containing one or more covered batteries of producers participating in an approved plan;*
- (4) describes the education and communications strategy being implemented to promote participation in the approved covered battery stewardship program and provide the information necessary for effective participation of consumers, retailers, and others;*
- (5) describes how the battery stewardship organization will make available to collection sites, for voluntary use, signage, written materials, and other promotional materials that collection sites may use to inform consumers of the available end-of-life management options for covered batteries collected by the battery stewardship organization;*
- (6) lists promotional activities to be undertaken, and the identification of consumer awareness goals and strategies that the program will employ to achieve these goals after the program begins to be implemented;*
- (7) includes collection site safety training procedures related to covered battery collection activities at collection sites, including a description of operating protocols to reduce risks of spills or fires, response protocols in the event of a spill or fire,*

and protocols for safe management of damaged batteries that are returned to collection sites;

(8) describes the method to establish and administer a means for fully funding the program in a manner that equitably distributes the program's costs among the producers that are part of the battery stewardship organization. For producers that choose to meet the requirements of this Act individually, without joining a battery stewardship organization, the plan must describe the proposed method to establish and administer a means for fully funding the program;

(9) describes the financing methods used to implement the plan, consistent with Section 35;

(10) describes how the program will collect all covered battery chemistries and brands on a free, continuous, convenient, visible, and accessible basis, and consistent with the requirements of Section 40, including a description of how the statewide convenience standard will be met and a list of collection sites supported by the battery stewardship program, including the address of collection sites supported by the battery stewardship program;

(11) provides explanation for any delay anticipated by the battery stewardship organization for the implementation of the management of medium-format batteries such that implementation will begin later than January 1, 2026, including a delay in the ability to collect, package, transport, or process medium-format batteries in accordance with the requirements of this Act, and establishes an expected date of compliance for management of medium-format batteries that is not later than January 1, 2028 if a delay occurs;

(12) describes the criteria to be used in the program to determine whether an entity may serve as a collection site for covered batteries under the program;

(13) establishes collection rate goals for each of the first 3 years of implementation of the battery stewardship plan that are based on the estimated total weight of primary and rechargeable covered batteries that have been sold in the State in the previous 3 calendar years by the producers participating in the battery stewardship plan;

(14) identifies proposed service providers, such as sorters, transporters, and processors, to be used by the program for the final disposition of batteries and proposed provisions for recordkeeping, tracking, and documenting the fate of collected covered batteries;

(15) details how the program will achieve a recycling efficiency rate, calculated in accordance with Section 50, of at least 60% for rechargeable batteries and at least 70% for primary batteries; and

(16) proposes goals for increasing public awareness of the program and describes how the public education and outreach components of the program under Section 45 will be implemented.

B. Citations

To provide the appropriate framework, each section of this plan begins with the citation(s) of the sections of the Law.

II. STEWARDSHIP ORGANIZATION

A. Citations

103-1033 Section 1 DEFINITION

(1) "Battery stewardship organization" means a producer that implements a battery stewardship plan required under this Act or a nonprofit organization designated by a producer or group of producers to implement a battery stewardship plan required under this Act.

103-1033 Section 25 BATTERY STEWARDSHIP PLAN COMPONENTS

(a) By July 1, 2025, each battery stewardship organization must submit to the Agency for approval a plan for covered batteries.

B. Call2Recycle, Inc.

Call2Recycle Stewardship, Inc., is a 501(c)3 non-profit public service organization organized under Delaware law. The Call2Recycle® program was created and funded by battery and product manufacturers committed to responsible recycling.

Founded in 1994 as the Rechargeable Battery Recycling Corporation (RBRC), Call2Recycle is the first and most extensive US consumer battery stewardship program, collecting used primary and rechargeable batteries, as well as used cellphones. The Call2Recycle program has operated in Illinois since its collection program was launched in 1996.

Call2Recycle is led by an experienced [Senior Leadership Team](#) and governed by its [Board of Directors](#).

C. Management and Administration

Call2Recycle is responsible for the management and administration of the program, including, but not limited to, the following tasks:

- Management of program communications, including education and outreach campaigns, and serving as the interface for the public and contracted parties.
- Overall day-to-day management of the program, including liaison with other stakeholders and Illinois government.
- Collection of stewardship fees through a process that ensures confidentiality of data.
- Defining and meeting the performance management targets for the program, including a plan for continuous improvement.
- Ensuring compliance with all applicable federal, state, and municipal requirements.
- Management of contracts with the collection, sorting, processing, and recycling service provider(s) and the audit functions.
- Setting and adhering to operating budgets.

III. REGISTERED PRODUCERS AND BRANDS

A. Citations

(1) lists and provides contact information for each producer, battery brand, and battery-containing product brand covered in the plan, including identifying producers who have contractually accepted responsibility as a producer in accordance with paragraph (3) of the definition of producer in this Act

B. Battery Producers and Brands

As of June, 30, 2025, 253 producers, representing 605 brands, have designated Call2Recycle as their battery stewardship organization to fulfill their compliance requirements under Illinois' battery stewardship law. These producers will finance primary and rechargeable battery collection and recycling in Illinois by paying fees based on the total weight of in-scope batteries sold into the state.

A listing of producers and their contact information, as well as covered brands partnering with

Call2Recycle to comply with the Illinois battery stewardship law, can be found in Appendix A. Likewise, a list of exempt producers can be found in Appendix B.

IV. FUNDING AND BUDGET

A. Citations

(8) describes the method to establish and administer a means for fully funding the program in a manner that equitably distributes the program's costs among the producers that are part of the battery stewardship organization. For producers that choose to meet the requirements of this Act individually, without joining a battery stewardship organization, the plan must describe the proposed method to establish and administer a means for fully funding the program;

(9) describes the financing methods used to implement the plan, consistent with Section 35

B. Financing the Stewardship Plan

The Illinois battery stewardship program is funded through fees paid by obligated producers on covered batteries and battery-containing products sold in the state. All fees are approved by the Call2Recycle Board of Directors.

At the end of each calendar quarter, these producers are required to report their sales—by weight—of in-scope batteries sold into the Illinois market during the previous quarter. This reporting is limited to battery weight only and excludes the weight or type of the product the battery powers.

Producers submit their national battery sales data to Call2Recycle. Using this data, the reporting software calculates Illinois' share by multiplying national sales weight by Illinois' proportional share of the US population (currently 4.0%). Fees are then assessed based on battery chemistry, reflecting the varying costs of collecting, handling, sorting, and recycling different battery types. These fees also account for a range of administrative expenses, including education and outreach, program management, and research and development, among others.

All weight data is submitted through Call2Recycle's secure online portal, GreenTrax. Once reporting is complete, an invoice is automatically generated. Fee structures are reviewed and adjusted no more than once per year, and adjustments account for rising program costs.

C. Pro Forma Budget

The methodology used to establish and manage the budget for the Illinois battery collection program is straight forward and simple. Revenues are described above; expenses are listed and defined below.

- **Collections:** Covers the research, development, manufacturing, fulfillment, and management of collection kits (including containers, bags, in-store signage, and related materials). All collection sites in the program must use Call2Recycle's collection kits.
- **Transportation:** Includes the cost of shipping collection kits to and from collection sites, sorting centers, and processing facilities.
- **Processing:** Refers to the costs of sorting and recycling batteries after collection.
- **Periodic Sort:** A yearly sort at an approved facility where each battery is weighed and recorded by brand and chemistry.

- **Local Government Reimbursement:** Costs paid to local governments for verified expenses when their facilities participate as collection sites. This requirement is based on Section 35 of the regulation.
- **Total Operations:** The combined budget for collections, transportation, processing, local government reimbursement, and annual sorting.
- **Battery Embedded Devices Study:** Cost related to assessing the opportunities and challenges associated with the end-of-life management of batteries embedded in products. This requirement is based on Section 75 of the regulation.
- **Battery Stewardship Plan Administration:** Administrative costs of running the program in Illinois, including staff salaries, professional services, travel, and overhead.
- **Education and Outreach:** All costs related to informing and engaging stakeholders like retailers, consumers, businesses and collection sites.
- **IEPA:** Mandated payments to support the Illinois Environmental Protection Agency's oversight of the program.
- **Financial Reserve:** A portion of current steward payments are set aside in a reserve fund to cover the costs associated with future collections. Since many batteries have multi-year lifespans, the reserve is intended to provide resources to support collection efforts as batteries reach end of life.

A sample pro forma budget is shown below in table 1. All revenues and expenses are estimates gleaned from the previous 30+ years of operating a rechargeable program in IL and are in line with the collection goal in section X.

TABLE 1. Battery Product Stewardship 2026 Budget Pro Forma

Pro Forma Budget-State of Illinois	2026
Revenue	
Battery Producer Funding	\$ 7,663,149
Expenses	
Collections	\$ 921,981
Transportation	\$ 1,304,780
Processing	\$ 309,518
Local Government Reimbursement	\$ 262,008
Total Operations Costs	\$ 2,798,287
Battery Embedded Devices Study	\$ 400,000
Education & Outreach	\$ 750,000
IEPA	\$ 100,000
All Program Support Costs & Personnel	\$ 1,651,681
Total Other Expense	\$ 2,901,681
Grand Total Expenses	\$ 5,699,968
Contribution to Reserve	\$ 1,963,181

V. COLLECTION, SAFETY AND CONVENIENCE

A. Citations

(10) describes how the program will collect all covered battery chemistries and brands on a free, continuous, convenient, visible, and accessible basis, and consistent with the requirements of Section 40, including a description of how the statewide convenience standard will be met and a list of collection sites supported by the battery stewardship program, including the address of collection sites supported by the battery stewardship program;

(11) provides explanation for any delay anticipated by the battery stewardship organization for the implementation of the management of medium-format batteries such that implementation will begin later than January 1, 2026, including a delay in the ability to collect, package, transport, or process medium-format batteries in accordance with the requirements of this Act, and establishes an expected date of compliance for management of medium-format batteries that is not later than January 1, 2028 if a delay occurs;

(12) describes the criteria to be used in the program to determine whether an entity may serve as a collection site for covered batteries under the program;

B. Free Collection

With funding from participating producers, Call2Recycle's collection and recycling program will be offered in Illinois at no cost to accept all batteries meeting the definition of a battery and battery-containing product as described under the law. In addition, participation in the Call2Recycle program as a battery collection site (assuming the entity meets the collection site criteria listed in Section V.C of this Plan) is open at no cost to all retailers and other entities, such as solid waste management facilities and private business locations. Conversely, no organization is required to participate as a collection site.

C. Eligibility for Battery Collection Sites

Call2Recycle supports its customer base by utilizing a centralized fulfillment solution that ships approximately 225,000 battery collection containers annually to 22,000+ US collection sites.

Anyone interested in becoming a collection facility can request more information [online](#) or call 877-723-1297.

Any retailer, business, institution, or government entity that meets the following minimum requirements can participate as a private or public collection site for battery collections.

- **Contact Information Requirement:** The facility must provide contact information for individual collection sites.
- **Containers:** The facility must agree to use Call2Recycle-provided containers for the collection and shipment of batteries. These containers will be supplied at no cost to participating collection sites.
- **Minimum Battery Collection:** The facility must commit to returning at least one full container of batteries per year. In accordance with US Environmental Protection Agency regulations, batteries may not be stored on-site for longer than one year. Failure to meet this requirement will result in automatic deactivation of the facility as a collection site.
- **Regulatory Compliance:** The site must agree to safely handle and ship batteries in compliance with US Department of Transportation (USDOT) regulations.

- **Mandatory Training & Certification Requirement:** To ensure safe and compliant battery collection and shipping, all participating sites must meet specific training and certification requirements, which are based on the types of batteries collected and the solution used:
 - **Safety Training:**
 - **Portable battery collections:** This online safety training covers collection, preparation and shipping of end-of-life batteries in Call2Recycle collection boxes. At least one staff member per site must complete and pass this safety training before collection boxes will be provided. This safety training must be renewed annually to continue in the program.
 - **Medium format battery collections:** This online safety training covers the collection, preparation and shipping of batteries over 300-watt hours in Call2Recycle, special permitted containers. At least one staff member per site must complete the training prior to containers being provided. This training must be renewed annually.
 - **OneDrum™ Battery Recycling Solution** (Single solution for batteries over and under 300 watt-hour): Prior to OneDrum being provided, the shipper must send Call2Recycle their 49-CFR certification number and expiration date or complete the Call2Recycle online safety training that provides 49-CFR certification. This training must be renewed every three years.
- **Damaged and Defective batteries:**
 - **Over 300-watt hours:** In order to ship damaged or defective batteries over 300-watt hours, the shipper of record must be 49-CFR certified in accordance with the USDOT's Code of Federal Regulations [Title 49](#). The shipper must send Call2Recycle their 49-CFR certification number and expiration date or complete the Call2Recycle online safety training that provides 49-CFR certification. This training must be renewed every three years.
 - **Under 300 watt-hours:** Call2Recycle's solution for shipping damaged and defective batteries under 300 watt-hours comes with a special permit that provides relief for 49-CFR requirement. However, prior to providing containers, at least one staff member per site must complete Call2Recycle's specialized online safety training for handling damaged or defective batteries. This specialized training course must be renewed annually.

Additionally, the following factors will be considered when adding collection sites:

- **Accessibility:** Ensuring an optimal number of collection sites, meeting the ordinance's requirements, while also considering geographic distribution and population density to maximize resident access.
- **Cost-effectiveness:** Managing the cost-to-serve to maintain an efficient and sustainable program.
- **Safety:** Call2Recycle will collaborate with interested companies to promote safe battery recycling practices, including lithium battery fire prevention. We take proactive measures to ensure newly enrolled sites are actively and safely participating in the program.

By meeting these requirements, collection sites can safely and efficiently participate in Call2Recycle's battery collection program while ensuring compliance with all regulatory and safety standards.

D. Accessibility & Convenience

For the past 30+ years, Call2Recycle has provided Illinois with a free rechargeable battery collection and recycling program. Currently, 90% of Illinoisans live within 15 miles of a public collections site. The map in Appendix D illustrates the active Call2Recycle collection network already in the state.

A full list of all current public sites, with addresses, can be found in Appendix E.

Under Public Act 103-1033 a battery stewardship organization shall meet the following accessibility criteria for **portable sized** batteries:

- A. At least one permanent collection for portable batteries within a 15-mile radius at least 95% of state residents; and
- B. At least one permanent collection site, collection service, or collection event for portable batteries in addition to those required in subparagraph (a) for every 30,000 residents of a county.

As of June 30, 2025, Call2Recycle manages 202 public collection sites throughout Illinois. To meet the accessibility criteria outlined in the law, we plan to increase the number of public collection sites once our stewardship plan is approved. In addition to public collection sites, Call2Recycle manages 534 private collection sites that are not publicly accessible.

In addition, we have identified **15 counties** with populations over 30,000 that currently do not have a public collection site. To meet the legal requirements in these areas, we will add at least one permanent collection site, service, or event in each of these counties.

Upon approval of the plan, Call2Recycle will expand its outreach and recruiting efforts to ensure sufficient coverage across the state. These efforts will not only help us comply with the law but also support our goal of increasing battery collections to meet performance targets set in the plan.

In addition, under Public Act 103-1033 a battery stewardship organization shall meet the following accessibility criteria for **medium format** sized batteries:

- A. at least 10 permanent collection sites in Illinois;
- B. reasonable geographic dispersion of collection sites throughout the State;
- C. a permanent collection site in each county of at least 200,000 persons, as determined by the most recent federal decennial census; and
- D. service to areas without a permanent collection site. A battery stewardship organization must ensure that there is a collection event at least once every 3 years in each county of the State which does not have a permanent collection site. Such collection events must provide for the collection of all medium-format, damaged and defective batteries.

Upon approval of the plan, Call2Recycle will work immediately with the 5 permanent Household Hazardous Waste (HHW) sites located across Illinois to provide training and certification for them to begin the collection of medium format batteries. These sites are listed in Table 2:

TABLE 2. IL Permanent HHW Locations

HHW	County	Address
Naperville	DuPage	156 Fort Hill Dr
Rockford (Four Rivers Sanitation Authority)	Winnebago	3333 Kishwaukee
Chicago (Goose Island)	Cook	1150 North Branch
Lake County (SWALCO)	Lake	1311 N Estes St
Madison County	Madison	249 N Old St

Next, Call2Recycle will engage other entities that meet the criteria to collect medium format batteries in the counties of Will, Kane, McHenry, St. Clair, and Champaign who each have populations greater than 200,000.

Call2Recycle will strategically collaborate with the Illinois Environmental Protection Agency (IEPA) and the existing Household Hazardous Waste (HHW) network to support and expand battery collection events across the state. Building on this foundation of collection events, Call2Recycle will also support IEPA's efforts under its federal Department of Energy (DOE) grant to further scale the number and geographic reach of battery-focused collection events.

To maximize accessibility and impact, participation in these events will not be limited by county or local jurisdiction—residents from any part of Illinois will be welcome to participate.

Table 3 shows the current Call2Recycle Public collection network by County along with the planned network that will be in place by 12/31/2026:

TABLE 3. IL Current vs. Planned Collection network

County	Population	Current	Planned	Planned
		Portable Battery Sites		Med-format + Damaged or Defective Battery Sites
Adams	65,737	3	3	
Alexander	5,240	0	1	
Bond	16,725	0	1	
Boone	53,577	0	1	
Brown	6,556	0	1	
Bureau	32,993	0	2	
Calhoun	4,802	0	1	
Carroll	14,312	0	1	
Cass	12,260	0	1	
Champaign	205,644	3	6	1
Christian	32,661	0	2	
Clark	15,596	0	2	
Clay	13,253	0	1	
Clinton	37,639	0	1	
Coles	50,885	0	2	

County	Population	Current	Planned	Planned
		Portable Battery Sites		Med-format + Damaged or Defective Battery Sites
Cook	5,087,072	629	629	1
Crawford	18,807	0	1	
Cumberland	10,808	0	1	
DeKalb	104,143	2	3	
De Witt	15,769	1	1	
Douglas	19,479	0	1	
DuPage	921,213	25	30	1
Edgar	17,360	0	2	
Edwards	6,392	0	1	
Effingham	34,208	0	1	
Fayette	21,416	0	2	
Ford	13,250	0	1	
Franklin	37,138	0	1	
Fulton	32,541	0	2	
Gallatin	4,670	0	1	
Greene	11,543	0	2	
Grundy	53,578	1	1	
Hamilton	7,911	0	1	
Hancock	17,186	0	2	
Hardin	3,569	0	1	
Henderson	7,331	0	1	
Henry	49,284	0	2	
Iroquois	26,136	0	3	
Jackson	52,974	1	2	
Jasper	9,144	0	2	
Jefferson	37,138	1	2	
Jersey	21,091	0	1	
Jo Daviess	21,756	0	2	
Johnson	13,326	0	1	
Kane	514,982	12	17	1
Kankakee	105,940	1	2	
Kendall	139,976	2	2	
Knox	49,699	1	2	
LaSalle	108,309	2	2	
Lake	708,760	15	23	1
Lawrence	14,813	0	1	
Lee	34,145	0	2	
Livingston	35,320	1	3	
Logan	27,590	0	2	
Macon	103,998	2	3	
Macoupin	44,018	0	2	
Madison	262,752	8	9	1
Marion	36,673	0	2	
Marshall	11,683	0	2	

County	Population	Current	Planned	Planned
		Portable Battery Sites		Med-format + Damaged or Defective Battery Sites
Mason	12,523	0	2	
Massac	14,082	0	2	
McDonough	27,238	0	1	
McHenry	312,800	6	10	1
McLean	170,441	4	5	
Menard	11,954	0	1	
Mercer	15,699	0	2	
Monroe	34,957	0	1	
Montgomery	27,663	0	2	
Morgan	32,140	1	2	
Moultrie	14,342	0	1	
Ogle	51,265	0	2	
Peoria	177,513	3	3	
Perry	20,503	0	1	
Piatt	16,714	0	1	
Pike	14,342	0	2	
Pope	3,707	0	1	
Pulaski	4,911	0	1	
Putnam	5,561	0	1	
Randolph	29,815	0	2	
Richland	15,488	0	1	
Rock Island	141,236	1	1	
St. Clair	251,018	6	6	1
Saline	22,873	0	1	
Sangamon	193,491	4	4	
Schuyler	6,733	0	1	
Scott	4,710	1	1	
Shelby	20,568	0	2	
Stark	5,218	0	1	
Stephenson	43,105	0	2	
Tazewell	129,541	3	3	
Union	16,667	0	1	
Vermilion	71,652	1	2	
Wabash	10,942	0	1	
Warren	16,185	0	2	
Washington	13,536	0	2	
Wayne	15,761	0	2	
White	13,401	0	1	
Whiteside	55,532	1	2	
Will	700,728	10	10	1
Williamson	66,357	2	2	
Winnebago	280,922	6	6	1
Woodford	38,285	0	2	

Call2Recycle does not expect to request additional time to meet the accessibility metrics for medium format batteries. However, this may change as Call2Recycle begins outreach to additional sites for the collection of medium format batteries.

E. Collection of Batteries

Call2Recycle provides a safe, compliant, and free solution for battery collections for retailers, municipalities, and other businesses, such as solid waste management facilities and certified salvage yards. The program is offered at no cost for the collection site, as well as for the public dropping their batteries off at any of these sites.

Call2Recycle's approach to battery collection is strategically designed with user safety, convenience, and flexibility in mind. Call2Recycle provides the necessary collection containers, with USDOT special permits and collateral materials to safely collect batteries, and pays for all shipping, sorting, and recycling costs.

Call2Recycle's patented collection and shipping solutions comply with [US EPA Universal Waste Regulations](#) and [USDOT Regulations](#). These solutions are tailored for a range of collection needs, from small to large volumes, as well as specialized handling for damaged, defective batteries and medium-format batteries with 300+ watt-hours.

A copy of any of Call2Recycle's special permits or collateral materials are available upon request.

1. Small Volume Solution

Call2Recycle's small-volume collection solution is designed to provide safe, compliant, and efficient battery recycling for sites handling lower collection volumes. Call2Recycle's collection kit ships under a USDOT Special Permit which allows for both rechargeable and primary batteries to be collected, stored, and shipped in the same box. The program adheres to the following standards:

- **Collection Kits:** Each collection container is pre-assembled and includes a UN4G-certified recycling box with a flame-retardant liner, large and/or small bags, a guideline sheet, and a pre-paid return shipping label. Once the kit is filled, it will be picked up by the carrier for processing.
- **Collection Kit Availability:** Call2Recycle is committed to working with collection sites to ensure they always have the appropriate number of battery collection kits on hand. Sites can request additional kits by contacting Customer Service or submitting an order request through the Call2Recycle website. Orders are processed promptly, with kits typically shipped the next business day.
- **Material Compliance Monitoring:** All materials received at processing facilities are reviewed for program compliance. If non-program and/or non-compliant materials are identified, Call2Recycle will contact the site to address the issue. In such cases, additional training may be required before any new collection kits are shipped, in order to ensure future compliance and safe handling practices.
- **Certificates of Recycling:** Available upon request, these certificates provide collectors with detailed weight data categorized by battery chemistry type for a specified time period.

2. Large Volume Solution

Call2Recycle's high-volume shipping solutions are designed to ensure safe, efficient, and compliant battery transportation, adhering to the following standards:

- **OneDrum:** OneDrum™ is a turnkey all-in-one battery recycling solution that allows the safe and efficient placement and transportation of large volumes of single-use, rechargeable batteries AND batteries over 300 watt-hours in one drum without sorting by chemistry or individually bagging or taping any battery terminals (including coin cell batteries). Each drum is pre-assembled and includes a UN-rated drum, lid, liner, pallet, applicable labels, premeasured bags of fire suppressant and instructions. Each container ships under a USDOT Special Permit that fully complies in transporting hazardous materials and requires a 49CFR certification to prepare and ship these containers.
- **OneDrum Availability:** Call2Recycle is committed to working with collection sites to ensure they always have OneDrum units on hand. OneDrum orders are shipped in quantities of up to four per pallet via FedEx freight. Sites can request additional OneDrum kits that by contacting Customer Service or submitting an order request through the Call2Recycle website. Orders are processed promptly to avoid disruption in service.
- **Best Practices Guidance:** Call2Recycle provides the best practice information to sites that collect and ship large quantities of batteries.
- **Online Shipping & Compliance Tools:** For bulk shipments, Call2Recycle offers their online portal, GreenTrax, to assist sites in:
 - Completing a bill of lading (BOL) using USDOT-approved language and United Nations (UN) numbers which identify hazardous materials being shipped.
 - Scheduling pickups directly through Call2Recycle's approved transporters.
 - If online submission is not an option, a manual BOL package with detailed instructions is available.
- **Shipment Tracking:** The BOL number can be used to track the shipment's progress until it reaches its destination.
- **Electronic Documentation & Compliance:** Upon receipt of the shipment, Call2Recycle electronically captures all supporting documentation. Any non-program or non-compliant materials received will be recorded and reported back to the collection site if necessary.
- **Certificates of Recycling:** Available upon request, these certificates provide collectors with detailed weight data categorized by battery chemistry type for a specified time period.

3. Damaged, Defective and Lithium-ion Batteries Over 300 watt-hours Solution

Call2Recycle's shipping solutions for damaged, defective, and medium format batteries (300+ watt-hours) are designed to ensure safe, efficient, and compliant transportation. Our solutions adhere to the following standards:

- **Regulatory Compliance:** All shipping solutions meet USDOT standards, for the safe handling and transport of damaged, defective lithium and high-energy batteries.
- **Specialized Packaging:** Call2Recycle provides multiple certified packaging solutions, including fire-resistant and impact-resistant containers, to mitigate risks associated with transporting damaged or defective batteries.
- **Clear Labeling & Documentation:** Each shipment includes proper labeling, documentation, and handling instructions to ensure compliance and traceability throughout the shipping process.
- **Trained & Certified Handling:** Our program ensures that all personnel involved in packaging and shipping are trained in safe battery handling practices, reducing potential safety hazards.

- **Convenient Pickup & Transport Options:** Call2Recycle offers scheduled pickup services and partnerships with approved carriers to facilitate safe and timely transportation of high-energy and damaged or defective batteries.

VI. SAFETY TRAINING

A. Citations

(7) includes collection site safety training procedures related to covered battery collection activities at collection sites, including a description of operating protocols to reduce risks of spills or fires, response protocols in the event of a spill or fire, and protocols for safe management of damaged batteries that are returned to collection sites

B. Safety and Compliance

The safety of consumers, collection sites, transporters, sorters, and processors remains a top priority for Call2Recycle.

Call2Recycle works closely with federal, state, and municipal environmental protection agencies and the USDOT Pipeline and Hazardous Materials Safety Administration (PHMSA) to ensure the safe collection, transportation, and recycling of both rechargeable and primary batteries collected by the program.

Call2Recycle's program is designed to capture information and documentation necessary to track and report on all shipments from program participants to sorting/processing facilities, as well as shipments moving from sorting/consolidating facilities to processing facilities. The organization monitors each step of the shipment process from the point of origin to delivery at the final processors. Tracking covers the lifecycle of a collected battery, from capturing bills of lading shipping documents to certificates of consumption, which is the organization's verification of the final destruction of materials collected by the program.

C. Training

Educating and training collection sites on safe and compliant handling and shipping of primary and rechargeable batteries begins when new sites are enrolled. Prior to Call2Recycle providing collection kits, all new sites are required to complete an online safety training course successfully. Once completed, the site is activated, and Call2Recycle will then ship the site kits so they can start collecting primary and rechargeable batteries. After the first year of participation, the sites undergo annual training to continue in the program. Furthermore, depending on the volumes and types of batteries, some sites require additional training for medium format, damaged or defective batteries, as well as specialized training for the use of OneDrum.

Call2Recycle's safety training addresses practices for the safe handling and shipping of all battery types. However, due to its higher susceptibility to thermal runaway and stringent transportation requirements, Call2Recycle does focus heavily on lithium batteries.

Call2Recycle offers safety resources on its webpage, call2recycle.org. Resources include battery recycling awareness posters, bulk shipping safety guidelines, terminal protection guidelines, and answers to frequently asked questions.

VII. FAIR COMPENSATION

A. Citations

Public Act 103-1033 section 35 (e)

A battery stewardship organization must reimburse local governments for demonstrable costs incurred as a result of a local government facility or solid waste handling facility serving as a collection site for a program including, SB3686 Enrolled LRB103 37456 JAG 67578 b Public Act 103-1033 but not limited to, associated labor costs and other costs associated with accessibility and collection site standards such as storage

B. GreenVantage Program

Call2Recycle will use our GreenVantage program for reimbursement of labor costs for all local government that agree to participate in the Call2Recycle program. The GreenVantage program has been in effect for over 8 years across the United States for government sites to be reimbursed for labor costs associated with the collection, preparation, and shipping of covered batteries. To begin the program, a local government will sign the GreenVantage agreement which outlines the requirements to participate in this program. The requirements include:

- Meeting the safety training requirements of any collection site
- Use of only Call2Recycle collection solutions for collection of all covered batteries
- Use of only Call2Recycle DDR kits for any damaged or defective battery collected

Once a government site is set up under the GreenVantage program, containers will be shipped at no cost to the site. The local government site will be reimbursed on a per pound basis for the weight of the covered batteries collected, shipped, and sorted via the Call2Recycle program.



VIII. TRANSPORTATION AND RECYCLING

A. Citations

(14) identifies proposed service providers, such as sorters, transporters, and processors, to be used by the program for the final disposition of batteries and proposed provisions for recordkeeping, tracking, and documenting the fate of collected covered batteries;

(15) details how the program will achieve a recycling efficiency rate, calculated in accordance with Section 50, of at least 60% for rechargeable batteries and at least 70% for primary batteries;

B. Record Keeping - Commitment to Transparency and Accountability in Downstream Management

Call2Recycle maintains a rigorous approach to downstream documentation, recordkeeping, and reporting to ensure full compliance with regulatory standards and industry best practices. Every battery collected through the program is tracked from point of collection through final processing, with detailed records maintained at each stage of the material journey.

All downstream vendors—including sorters, consolidators, and processors—are subject to strict qualification protocols and must provide comprehensive documentation confirming responsible recycling practices. This includes manifests, shipping documentation, processing certifications, and end-market verification. Call2Recycle requires all processing partners to meet or exceed applicable environmental and safety standards and regularly audits vendors to ensure ongoing compliance.

Our systemic approach with a secure platform enables accurate and auditable reporting, ensuring that data provided to regulatory agencies is complete, timely, and transparent. Quarterly and annual reports are compiled to reflect volume, chemistry, geographic origin, and downstream outcomes, providing regulators with clear insight into program performance and material accountability.

Through this transparent and tightly managed process, Call2Recycle demonstrates its ongoing commitment to environmental stewardship, regulatory alignment, and public trust.

C. Commitment to Industry Standards & Certifications

To uphold the highest environmental, safety, and quality standards, Call2Recycle undergoes regular inspections to maintain industry-recognized certifications, including:

- **ISO 9001:** Ensures a quality management system that consistently provides products and services that meet customer and regulatory requirements.
- **ISO 14001:** Supports an effective environmental management system (EMS) to improve environmental performance and compliance. ([ISO 14001 Details](#))
- **ISO 45001:** Establishes occupational health and safety (OH&S) management system requirements to provide safe and healthy workplaces, prevent work-related injuries, and enhance overall safety performance. ([ISO 45001 Details](#))
- **Responsible Recycling (R2) Certification:** Recognizes responsible reuse and recycling practices throughout the electronics lifecycle, ensuring environmental protection, worker safety, and a sustainable circular economy. ([R2 Certification Details](#))

D. Transporters

Call2Recycle currently uses UPS to transport kits from a central fulfillment facility to its collection sites. Filled kits are shipped from Illinois collection sites to sorters using the same carriers. Call2Recycle's contracted bulk transporters are FedEx Freight, C.H. Robinson and XPO Logistics. All transportation providers are members of the Environmental Protection Agency's SmartWay partnership, which is committed to improving fuel efficiency and reducing greenhouse gases and air pollution from the transportation supply chain industry.

TABLE 4. Call2Recycle Transporters

Transporter Name	Contact Information
UPS 215 Marvin Miller Dr. Atlanta, GA 30336 www.ups.com	Danielle Simerly 678-428-4924 dsimerly@ups.com
FedEx Freight 1675 Airport Rd. NW Kennesaw, GA 30144 www.fedex.com	Laura Shickle lrshickle@fedex.com 678-201-7539
CH Robinson (FreightQuote) 14701 Charlson Road, Eden Prairie, MN 555347-5076 www.chrobinson.com	Ian Snitz 816.949.6376 ian.snitz@freightquote.com
XPO Logistics 5 American Ln Greenwich, CT 06831 https://www.xpo.com/	Kevin Miller 470-218-0276 Kevin.miller004@xpo.com

E. Sorting Facilities

Primary and rechargeable batteries collected within Illinois will first travel to one of Call2Recycle's approved sorting partners. The batteries will be weighed, separated by battery chemistry, consolidated with similar types, and transported to a network of qualified and approved battery processors.

TABLE 5. Call2Recycle Sorters

Sorting Facility	Contact
Alliance Fulfillment 1004 Cobb Pkwy North, Suite E Marietta, GA 30062 alliancefulfillment.com	David Evans 678-613-1201 dave@alliancefulfillment.com
Alliance Fulfillment Urbana, OH alliancefulfillment.com	David Evans 678-613-1201 dave@alliancefulfillment.com
Blue Whale Materials 7323 International Dr Bartlesville, OK 74006 Blue Whale Materials	Austin Burrus 918-440-4335 aburrus@bluewhalematerials.com
Cirba Solutions 618 E Auto Center Dr, Suite 111	Stephanie Dix 248.446.5626

Sorting Facility	Contact
Mesa, AZ 85204 cirbasolutions.com	sdix@cirbasolutions.com
Cirba Solutions 4930 Holtz Dr, Wixom, MI 48393 cirbasolutions.com	Stephanie Dix 248.446.5626 sdix@cirbasolutions.com
Cirba Solutions 8090 Lancaster-Newark Rd NE Baltimore, OH 43105 cirbasolutions.com	Stephanie Dix 248.446.5626 sdix@cirbasolutions.com
Critical Materials Recovery 10S 48 th Ave Suite 3 Phoenix, AZ 98115 Critical Materials Recovery	Jesse McCullough jesse@cmr-lic.com
Electronic Recyclers International, Inc. 7815 N. Palm Ave. Suite 140 Fresno, CA 93711 ERI - Electronic Recycling	Angie Ransom 559-974-8586 angie.ransom@eridirect.com
Electronic Recyclers International, Inc. 3100 Reeves Rd Plainfield, IN 46168 ERI - Electronic Recycling	Angie Ransom 559-974-8586 angie.ransom@eridirect.com
Li Industries 5130 Hovis Rd Suite H Charlotte, NC 28208 li-ind.com	Dr. Zheng Li 607-759-5262 zheng.li@li-ind.com
Wistron GreenTech (Texas) Corporation 2101 Couch Dr McKinney, TX 75069 greentech.wistron.com	Renee Duncan 972-510-8486 Renee.duncan@wistron.com

F. Processing Facilities

Call2Recycle partners with a network of specialized battery processing facilities to ensure the safe, compliant, and efficient recycling of various battery chemistries. Each facility utilizes industry-approved methods to recover valuable materials while minimizing environmental impact. The following facilities process lithium-ion, lithium primary, nickel-cadmium (Ni-Cd), nickel-metal hydride (Ni-MH), lead acid, and non-lithium primary batteries using mechanical separation, thermal pre-processing, high-temperature metal recovery (HTMR), and hydrometallurgical techniques.

Table 6 is a summary of each facility, the battery chemistries they process, and their recycling methods.

TABLE 6. Call2Recycle Processors

Processor	Chemistry	Contact
Cirba Solutions 4930 Holtz Dr Wixom, MI 48393 cirbasolutions.com	Lithium primary	Stephanie Dix 248-446-5626 sdix@cirbasolutions.com
Recycling Method/Description: Cirba Solutions utilizes a multi-step process to safely recycle lithium primary batteries: <ol style="list-style-type: none">1. Pre-Treatment: Packaging is removed, and batteries are weighed and cooled in liquid nitrogen to minimize reactivity during processing.2. Shredding & Emissions Control: Batteries are shredded, with gases and fumes captured through a wet scrubber system and traveling bed filter. Emissions are monitored for compliance.3. Material Recovery: Lithium components are dissolved, precipitated, and processed into lithium carbonate.4. Scrap metal and plastic are separated into metallic and non-metallic fractions for reuse in new materials		

Processor	Chemistry	Contact
Cirba Solutions 4930 Holtz Dr Wixom, MI 48393 cirbasolutions.com	Non-lithium primary	Stephanie Dix 248-446-5626 sdix@cirbasolutions.com
Recycling Method/Description: Cirba Solutions processes non-lithium primary batteries using a room-temperature mechanical separation process, which sorts battery components into three end products: <ol style="list-style-type: none">1. Zinc & Manganese Concentrate: Used as feedstock in manufacturing, including the production of granular fertilizer.2. Steel: Recovered and sold for reuse in new materials.3. Paper, Plastic & Brass Fractions: Marketed and sold to manufacturers for recycling into various products.		

Processor	Chemistry	Contact
Cirba Solutions 265 Quarry Rd SE Lancaster, OH 43130-8271 cirbasolutions.com	Ni-Cd	Stephanie Dix 248-446-5626 sdix@cirbasolutions.com
Recycling Method/Description: Cirba Solutions processes Ni-Cd batteries using a room-temperature mechanical separation process: <ol style="list-style-type: none"> Battery Separation: Cells are removed from plastic casings for further processing. Cadmium Recovery: Cells undergo a retort process to extract high-purity cadmium, which is sold into the domestic battery supply chain. Nickel & Steel Recovery: The remaining nickel-rich material is sent to a downstream smelter for recovery and reuse. Hazardous Waste Disposal: Non-recyclable mixed plastic waste is classified as hazardous waste and disposed of in a hazardous waste landfill in compliance with federal and Ohio state regulations. Cirba Solutions operates as an Ohio state-permitted RCRA Subpart B Treatment, Storage, and Disposal Facility (TSDF) to ensure safe and compliant battery recycling.		

Processor	Chemistry	Contact
Critical Materials Recovery, LLC 10 S 48 th Ave Phoenix, AZ 85043 Critical Materials Recovery	Non-lithium primary	Jesse McCullough jesse@cmr-llc.com
Recycling Method/Description: CMR processes non-lithium primary batteries using a moister process that reduces the battery size and then a screening separation process, which sorts battery components into two end products: <ol style="list-style-type: none"> Zinc & Manganese Concentrate: Used as feedstock in manufacturing, including the production of granular fertilizer The remaining material is sent to a magnetic separator to recover: <ol style="list-style-type: none"> Steel: Recovered and sold for reuse in new materials. Brass: Sold for reuse in new materials. Fluff: A waste stream of leftover non-hazardous material identified as “fluff” is disposed of in a municipal landfill. 		

Processor	Chemistry	Contact
Doe Run Co 18594 State Hwy KK, Boss, MO 65440 doerun.com	SSLA	Lou Magdits 314-453-7123 lmagdits@doerun.com
Recycling Method/Description: Lead acid batteries are highly recyclable due to their high lead content, which can be reclaimed for new battery production. The recycling process includes: <ol style="list-style-type: none"> Battery Breaking & Crushing: Batteries are broken down, separating lead plates, acid, and plastic components. The lead and plastic are further crushed for easier separation. Material Separation: Crushed materials are submerged in water, allowing lead to sink while plastic and acid are separated for treatment. Lead Smelting: Recovered lead is melted, refined, and reused in new batteries or other products. Acid Treatment: Acid is neutralized, treated to remove contaminants, and either discharged safely or reused. Plastic Recycling: Plastic components are cleaned, shredded, and processed into pellets for new plastic products. Other Component Recycling: Electrolyte is refined for new batteries, while copper is sold as a commodity to smelters. 		

Processor	Chemistry	Contact
ERI 7815 N Palm Ave, Suite 140 Fresno, CA 93711 and 3100 Reeves Rd Plainfield, IN 46168 Electronic Recycling	Non-lithium primary	Angie Ransom 559-974-8586 angie.ransom@eridirect.com
Recycling Method/Description: ERI processes non-lithium primary batteries using a recycling process which breaks the battery down into it's raw components. <ol style="list-style-type: none"> Zinc & Manganese Concentrate – Multiple uses in manufacturing, including the production of granular fertilizer. Steel – Recovered and sold for reuse in new materials. Paper, Plastic & Brass Fractions – Marketed and sold to manufacturers for recycling into various products. 		

Processor	Chemistry	Contact
Evergreen Battery Recycling, LLC 2250 Larchmont Ave Warren, OH 44483 evergreenbatteryrecycling.com	NI-MH	John Rankin 440-799-2159 jr@coveir.com
Recycling Method/Description: EBR processes Ni-MH batteries using a room-temperature mechanical separation process: <ol style="list-style-type: none"> Shredding & Size Reduction: Batteries are shredded to break down components for further processing. Nickel & Steel Recovery: The shredded material is sent to a downstream smelter for nickel and steel recovery. Non-Hazardous Waste Disposal: Non-recyclable mixed plastic waste is verified as non-hazardous through Toxic Characteristic Leaching Procedure (TCLP) analysis and is disposed of in a local non-hazardous landfill in compliance with federal and Ohio state regulations 		

Processor	Chemistry	Contact
Evergreen Battery Recycling, LLC 2250 Larchmont Ave Warren, OH 44483 evergreenbatteryrecycling.com	Ni-Cd	John Rankin 440-799-2159 jr@coveir.com
Recycling Method/Description: EBR processes Ni-Cd batteries using a room-temperature mechanical separation process: <ol style="list-style-type: none"> Battery Separation: Cells are removed from plastic casings for further processing. Cadmium Recovery: Cells undergo a retort process to extract high-purity cadmium, which is sold into the domestic battery supply chain. Nickel & Steel Recovery: The remaining nickel-rich material is sent to a downstream smelter for recovery. Non-Hazardous Waste Disposal: Non-recyclable mixed plastic waste is verified as non-hazardous and cannot be used as feedstock for new materials. It is disposed of in a local non-hazardous landfill in compliance with federal and Ohio state regulations. 		

Processor	Chemistry	Contact
Gerdau Longsteel North America Ameristeel 384 Old Grassdale Rd NE Cartersville, GA 30121	Non-lithium primary	John Miller 470-514-7150
Recycling Method/Description: Gerdau uses a coprocessing route where battery materials serve as an additive in steel production. <ol style="list-style-type: none"> 1. Alkaline batteries are directly introduced into molten steel during steelmaking 2. Steel casing, carbon (from the anode), and manganese (from the cathode) are absorbed into the molten steel as alloying elements. 3. Zinc vaporizes (fumes off) due to its lower boiling point and is captured separately (typically via off-gas treatment or baghouse filters). 4. Plastics and paper (labels, separators) combust during the high-temperature process and are lost as thermal destruction. 5. A small internal metal pin (typically steel or nickel-plated steel) also enters the molten alloy. 		
Processor	Chemistry	Contact
Gopher Resources 685 Yankee Doodle Rd Eagan, MN 55121 gopherresource.com	SSLA	Roberto Oller 813-786-9007 roberto.oller@GopherResource.com
Recycling Method/Description: Lead acid batteries are highly recyclable due to their high lead content, which is reclaimed for use in new battery production. The recycling process includes: <ol style="list-style-type: none"> 1. Battery Breaking & Crushing: Batteries are broken down manually or mechanically, with plastic casings removed and components separated. Lead plates and plastic separators are crushed into smaller particles for easier processing. 2. Material Separation: The crushed materials are submerged in water, allowing lead to sink while plastic and acid are separated for further treatment. 3. Lead Smelting: Recovered lead is melted and refined to remove impurities, then reused in battery production or other industries. 4. Acid Treatment: Separated acid is neutralized and treated to remove contaminants before being discharged or reused in wastewater treatment. 5. Plastic Recycling: Plastic separators and casings are washed, shredded, and melted into pellets, which are primarily sold back to the battery manufacturing industry and other lead-based industries (e.g., ammunition manufacturing). 6. Other Component Recovery: <ol style="list-style-type: none"> (1) Electrolyte is used in the crushed battery feed desulfurization process or in wastewater treatment to adjust pH levels. (2) Copper and non-lead metals are recovered within the final lead product, while unrecoverable amounts are disposed of as furnace slag in a landfill, pending TCLP results for hazardous or non-hazardous classification. (3) A small amount of non-recyclable plastic is sent to smelting furnaces, where residual lead is recovered. 		

Processor	Chemistry	Contact
Interco 10 Fox Industrial Dr Madison, IL 62060 intercotradingco.com	Lithium ion	Kevin Gaus 618-798-9500 keving@intercotradingco.com
Recycling Method/Description: Interco processes lithium-ion batteries using a room-temperature mechanical separation process, which sorts battery components into four end products: <ol style="list-style-type: none"> Separator Plastic – Recovered for recycling. Aluminum & Copper – Extracted from cathode and anode foil for reuse. Black Mass – Contains nickel, cobalt, manganese, lithium, and graphite and is sent for further refinement. Steel – Recovered and sent for recycling. <p>All separated materials are forwarded to downstream processors for further refinement and reuse, ensuring efficient material recovery and sustainability.</p>		

Processor	Chemistry	Contact
Interco 10 Fox Industrial Dr Madison, IL 62060 intercotradingco.com	NI-MH	Kevin Gaus 618-798-9500 keving@intercotradingco.com
Recycling Method/Description: Interco processes Ni-MH batteries using a room-temperature mechanical separation process, which includes: <ol style="list-style-type: none"> Shredding & Size Reduction: Batteries are shredded to break down components for further processing. Nickel & Steel Recovery: The shredded material is sent to a downstream smelter for nickel and steel recovery. Material Reuse: Recovered metals are used as feedstock for new materials. 		

Processor	Chemistry	Contact
Li-Cycle 1669 Lake Ave, Building 350 Eastman Business Park Rochester, NY 14615 li-cycle.com	Lithium ion	Austin Ornelas 386-341-5373 austin.ornelas@li-cycle.com
Recycling Method/Description: Li-Cycle processes lithium-ion batteries using a room-temperature mechanical separation process, which sorts battery components into four key end products: <ol style="list-style-type: none"> 1. Separator Plastic – Recovered for recycling. 2. Aluminum & Copper – Extracted from cathode and anode foil for reuse. 3. Black Mass – Contains nickel, cobalt, manganese, lithium, and graphite, sent for further refinement. 4. Steel – Recovered and recycled. All separated materials are sent to downstream processors for further refinement and reuse, ensuring efficient material recovery and sustainability.		

Processor	Chemistry	Contact
Recycling Coordinators, Inc. (RCI) 600 E Exchange St Akron, OH 44306 recyclingcoordinators.com	Lithium ion	Teague Ostrander 330-434-4500 teague.ostrander@rci-int.com
Recycling Method/Description: RCI processes lithium-ion batteries using a room-temperature mechanical separation process, sorting battery components into three key end products: <ol style="list-style-type: none"> 1. Black Mass – Contains nickel, cobalt, manganese, lithium, and graphite, used for further material recovery. 2. Steel – Recovered and recycled. 3. Mixed Aluminum, Copper, and Plastics – Separated and repurposed as feedstock for new materials. All recovered materials are utilized in manufacturing, ensuring efficient recycling and resource sustainability.		

Processor	Chemistry	Contact
Recycling Coordinators, Inc. (RCI) 600 E Exchange St Akron, OH 44306 recyclingcoordinators.com	NI-MH	Teague Ostrander 330-434-4500 teague.ostrander@rci-int.com
Recycling Method/Description: RCI processes Ni-MH batteries using a room-temperature mechanical separation process, which includes: <ol style="list-style-type: none"> Shredding & Size Reduction: Batteries are shredded to break down components for further processing. Nickel & Steel Recovery: Shredded material is sent to a downstream smelter for nickel and steel recovery. Non-Recyclable Waste: A non-hazardous mixed plastic waste stream is generated and disposed of accordingly. <p>All recoverable materials are sent to downstream processors for further refinement, ensuring efficient resource recovery and minimal environmental impact.</p>		

Processor	Chemistry	Contact
Redwood Materials 2401 Conestoga Dr Carson City, NV 89706 redwoodmaterials.com	Lithium primary	Graham Stevens 619-708-8133 gstevens@redwoodmaterials.com
Recycling Method/Description: Redwood Materials processes lithium primary batteries using a multi-step energy-neutral process, distinct from high-temperature smelting. <ol style="list-style-type: none"> Thermal Pre-Processing: Batteries are discharged in an oxygen-starved environment, allowing for electrolyte capture without high-temperature smelting. Shredding & Material Separation: <ol style="list-style-type: none"> Steel casings are mechanically separated. The remaining materials, including lithium, zinc, and manganese, are prepared for further refinement. <p>Future Development: Redwood is actively developing processes for metal separation and recovery through hydrometallurgy.</p>		

Processor	Chemistry	Contact
Redwood Materials 2401 Conestoga Dr Carson City, NV 89706 redwoodmaterials.com	Lithium ion	Graham Stevens 619-708-8133 gstevens@redwoodmaterials.com
Recycling Method/Description: Redwood Materials processes lithium-ion batteries using a multi-step, energy-neutral process distinct from high-temperature smelting. <ol style="list-style-type: none"> 1. Thermal Pre-Processing: Batteries are discharged in an oxygen-starved environment, allowing for electrolyte capture without high-temperature smelting. 2. Shredding & Material Separation: <ol style="list-style-type: none"> 1. Batteries are size reduced via shredding. 2. Shredded material undergoes mechanical separation, producing four key end products: <ol style="list-style-type: none"> 1. Separator Plastic – Recovered for recycling. 2. Aluminum & Copper – Extracted from cathode and anode foil for reuse. 3. Black Mass – Contains nickel, cobalt, manganese, lithium, and graphite, sent for further refinement. 4. Steel – Recovered and recycled. <p>All separated materials are sent to downstream processors for further refinement and reuse, ensuring efficient material recovery and sustainability.</p>		

Processor	Chemistry	Contact
Redwood Materials 2401 Conestoga Dr Carson City, NV 89706 redwoodmaterials.com	NI-MH	Graham Stevens 619-708-8133 gstevens@redwoodmaterials.com
Recycling Method/Description: Redwood Materials processes Ni-MH batteries using a multi-step, energy-neutral process, distinct from high-temperature smelting. <ol style="list-style-type: none"> 1. Thermal Pre-Processing: Batteries are discharged in an oxygen-starved environment, allowing for electrolyte capture without high-temperature smelting. 2. Shredding & Material Reduction: Discharged batteries are size-reduced via shredding for further processing. 3. Nickel & Steel Recovery: Shredded material is sent to a downstream smelter for nickel and steel recovery. <p>Future Developments: Redwood Materials is actively developing hydrometallurgical metal separation capabilities to enhance material recovery.</p>		

G. Recycling Efficiency Rate

While every take-back program aims to optimize the amount of material collected, it is equally essential to maximize the amount of material that can be reclaimed for secondary use. This measure in the battery recycling industry is referred to as the recycling efficiency rate (RER). In short, RER is the percentage of battery weight received that is not lost in the recycling process and used in secondary products or materials. RER is calculated by dividing the material recovered from waste in-scope batteries by the total mass of the waste in-scope batteries that were sent for recycling. The scope of RER is limited to the facility that receives and processes batteries. RERs are self-reported via attestation by processors. As a note, subsequent downstream facilities to Call2Recycle approved processors are often fluid and commercially protected. As such "as far down the recycling chain as Call2Recycle has visibility" is commonly the same as "the first facility the batteries are sent to". The RERs outlined in this section will be met in years 1-3 per Section 25 of the statute.

All recycling processors under this plan will meet or exceed the RER's currently required in Section 50 of the statute.

TABLE 7: Target RER for years 2026 through 2028

	Rechargeable Batteries	Primary Batteries
Target RER	60%	70%

IX. Education & Outreach

A. Citations

- (3) describes how the battery stewardship organization will make retailers aware of their obligation to sell only covered batteries and battery-containing products containing one or more covered batteries of producers participating in an approved plan;*
- (4) describes the education and communications strategy being implemented to promote participation in the approved covered battery stewardship program and provide the information necessary for effective participation of consumers, retailers, and others;*
- (5) describes how the battery stewardship organization will make available to collection sites, for voluntary use, signage, written materials, and other promotional materials that collection sites may use to inform consumers of the available end-of-life management options for covered batteries collected by the battery stewardship organization;*
- (6) lists promotional activities to be undertaken, and the identification of consumer awareness goals and strategies that the program will employ to achieve these goals after the program begins to be implemented*

B. Education & Outreach Practices

This section includes:

- Education & Outreach Methods
- Message Pillars
- Target audiences
- Website and locator
- Hotline
- Continuous Improvement

C. Education & Outreach Methods

Call2Recycle has decades of experience in launching consumer-focused battery recycling campaigns, gaining valuable insights into effective outreach strategies. Through collaboration with collection networks, local stakeholders, and Illinois residents, Call2Recycle will implement a multi-channel approach designed to increase awareness, encourage participation, and improve battery recycling rates. This strategy includes:

- **Online Drop-Off Locator** – User-friendly tool to help consumers and businesses easily find nearby collection sites.
- **Educational Collateral** – Posters, rack cards, fact sheets, and in-store displays.
- **Social & Digital Media** – A mix of paid and organic campaigns via social media, including videos, email marketing, and newsletter content.
- **Sponsorships & Partnerships** – Engagement with retailers, trade associations, local governments, and environmental organizations to expand outreach.
- **Traditional Media** – Print, online, radio and transit ads
- **Earned Media** – Articles, interviews, and press coverage.
- **Community Events & Site Visits** – Participation in conferences, sustainability fairs, and other on-site engagement opportunities.

D. Message Pillars

Call2Recycle's Education and Outreach Plan is structured around three interconnected and foundational objectives to expand the program's reach in Illinois:

1. **Reinforce Battery Recycling Awareness**
 - Ensure consumers and businesses understand that battery recycling is accessible and free.
 - Educate on how and where to recycle batteries.
2. **Reinforce Battery Recycling Safety**
 - Share safety tips to prevent battery fires at home and at collection sites.
 - Train partners and staff on emergency procedures related to battery incidents.
3. **Bolster Battery Collections**
 - Expand and enhance collection site accessibility and convenience.
 - Support retailers and collection partners with best practices for safe handling and storage.
4. **Inspire Illinoisans to Recycle Batteries**
 - Highlight the local environmental benefits of battery recycling.

E. Target Audiences

To maximize awareness and participation, Call2Recycle will tailor its messaging and outreach strategies to the following key audiences:

- **Households:** Emphasize landfill ban of battery disposal along with convenience and accessibility of the collection network, highlighting nearby drop-off locations and the ease of recycling.
- **Businesses & Institutions:** Encourage participation among multi-tenant buildings, schools, hospitals, and contractors, providing guidance on collecting batteries used internally, but also the availability for employees to drop off batteries at work.

- **Trade Groups & OEMs:** Engage industry associations, retailers, and equipment manufacturers to promote best practices and program participation.
- **Retailers:**
 - Provide in-store signage, written materials and other promotional materials that retailers may use to inform customers of the available end-of-life management options for covered batteries.
 - Given that only brands covered under the program can be sold in retail stores in Illinois, Call2Recycle will promote awareness of the approved battery brands through messaging and the website.
 - Support retailers in becoming collection sites, ensuring proper training on safe battery handling and storage.
- **HHW Programs & Solid Waste Facilities:**
 - Collaborate with existing HHW partnerships such as Arcwood Environmental and eWorks Electronics Services to expand existing services and increase the battery program footprint.
 - Integrate battery recycling into existing waste management services, improving collection infrastructure.
 - Work with Township Supervisors to integrate or launch battery recycling programs in unincorporated areas.
- **Community-Based Outreach Programs:** Launch school and community recycling challenges to educate and incentivize responsible battery disposal.
- **Rural Outreach:** Develop targeted strategies to reach underserved and remote areas, ensuring equitable access to collection sites and recycling information.

Key Messaging Themes:

- Promote free, convenient recycling options.
- Educate on safety measures and proper disposal.
- Educate on landfill ban.
- Educate on options to recycle batteries – drive to the locator
- Education on covered battery brands
- Encourage businesses and retailers to serve as collection sites.

F. Website and Locator

The Call2Recycle website serves as a centralized hub for program details, collection site locations, and educational resources. Features include:

- **User-friendly drop-off locator:** Search by zip code or city to find nearby collection sites.
- **Battery type guide:** Helps users identify accepted products, like primary, rechargeable and/or 300+ watt hours.
- **Targeted resources:** Custom materials for retailers, manufacturers, and waste facilities.
- **List of Compliant Brands:** Assist retailers in identifying brands that are participating in the program and can be sold in IL retail establishments.
- **List of Compliant Stewards:** Published list of producers that are participating in the Call2Recycle program.

Call2Recycle regularly updates its national database of collection sites to ensure accurate and current information.

Illinois residents can easily find collection locations through Call2Recycle's online locator. By entering a zip code or city and state, they can quickly identify the nearest battery collection site. Additionally, the locator allows users to filter by battery type—primary, rechargeable, or medium format (300+ watt-hours)—to ensure they find the appropriate drop-off location. Appendix F is a screen shot of our locator.

Call2Recycle's locator is updated nightly so that new collection sites are available right away and sites that have stopped collecting batteries are removed. To facilitate the update, sites that do not ship batteries for 12 consecutive months are automatically removed from the locator.

G. Hotline

Call2Recycle encourages the public to use its online Drop-Off Locator to quickly and easily find the nearest battery collection site. This self-service tool is available 24/7 and is always up to date. For those who need additional assistance, a weekday hotline is also available. Staff speak English and can access live language interpretation in Spanish and a number of other languages when requested.

H. Continuous Improvement

Since 2015, Call2Recycle has conducted third-party (IPSOS Group S.A) consumer surveys in regulated jurisdictions to assess:

- **Awareness:** % of residents who know batteries can be recycled.
- **Participation:** % of residents who recycled batteries in the past 12 months.
- **Demographics & Behavior:** Who is recycling, where they recycle, and their motivations.

Annual IPSOS surveys will continue to measure the effectiveness of outreach efforts, allowing for data-driven adjustments.

X. PERFORMANCE GOALS

A. Citations

(2) proposes performance goals, consistent with Section 30, including establishing performance goals for each of the next 3 upcoming calendar years of program implementation;

(13) establishes collection rate goals for each of the first 3 years of implementation of the battery stewardship plan that are based on the estimated total weight of primary and rechargeable covered batteries that have been sold in the State in the previous 3 calendar years by the producers participating in the battery stewardship plan;

(16) proposes goals for increasing public awareness of the program and describes how the public education and outreach components of the program under Section 45 will be implemented.

B. Collection Rate

For 2026, Call2Recycle is proposing a collection rate of 10% based on data from other jurisdictions, program modifications, and assumptions. This rate, which equates to 950,000 lbs. is for the calendar year 2026 as the program begins to increase collection sites, launch consumer outreach, and education. This is compared to 351,964 lbs. of batteries collected in Illinois for a full year in 2024. Subsequent years'

proposed collection rates will increase as collection sites are established, and sufficient time has passed to educate and positively impact consumer behavior.

The Illinois Battery Stewardship Law is the second US extended producer responsibility regulation for all primary and rechargeable batteries. As such, we are building on lessons learned from the District of Columbia to develop the plan’s initial collection rate target and first year performance. However, the Illinois law is the first to include the medium format battery category and therefore Call2Recycle does not have prior data on assumed pounds reported nor collected from other jurisdictions or prior years.

Therefore, to estimate the average weight of portable rechargeable batteries offered for sale in the previous 3 years Call2Recycle used the past 3-year average of the reported rechargeable program data, with the removal of batteries that are embedded in covered electronic equipment, for the national Call2Recycle program and proportionally reduced the US numbers to Illinois using population as the reducing metric. However, there continues to be new stewards joining the program in 2025 because of numerous state laws implementing regulations which are not reflected in this historical data.

For primary batteries, Call2Recycle used historical data for the District of Columbia as the basis for the total weight of primary batteries offered for sale in the previous three years by stewards.

Lastly, Call2Recycle analyzed three years of reported battery data from our voluntary e-bike program, along with the first three quarters of data from our voluntary High Energy Battery program, which focuses on outdoor power equipment batteries. For other medium-format battery sectors, assumptions were made based on trends from these two programs.

In accordance with Public Act 103-1033, Call2Recycle will submit amended performance goals 5 years after the plan is approved and every two years after that, which may include adjusted collection rates.

To support continuous and meaningful progress toward increasing the performance goal of the recycling rate, Call2Recycle has developed an outreach and education plan in Section V.

TABLE 8: Battery Collection Rates – Illinois
Collection Rates by Calendar Year

	2026	2027	2028
Target Collection Rate	10%	11%	12%
Average sales weight offered for sale by Call2Recycle Stewards (lbs.) in 3 previous calendar years*	9,310,012	9,313,736	9,686,285
Estimated Batteries to be Collected (lbs.)	950,000	1,000,000	1,150,000
* Based on per capita of US sales and an estimated percentage of participating brands. For the years 2027 – 2028, a 4% sales inflation rate was used.			

C. Public Awareness

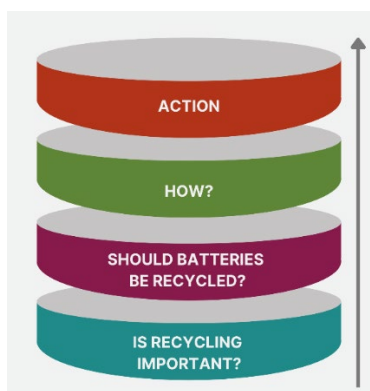
Consumer awareness takes time to develop, especially for new or unfamiliar recycling options. While Call2Recycle will help influence positive consumer awareness through various efforts (as outlined in Section V), it is equally important to evaluate how effective the outreach and education strategies are in

reaching and influencing the target audience.

Therefore, Call2Recycle routinely measures consumer awareness regarding key indicators related to battery recycling. Call2Recycle views awareness as a progression of knowledge and understanding, with the goal of steadily increasing public familiarity and engagement. This progression includes several key milestones:

1. **Acknowledgement** that recycling is important.
2. **Recognition** that primary and rechargeable batteries must be recycled following the implementation of the disposal ban in Illinois.
3. **Understanding** of how to recycle primary and rechargeable batteries.
4. **Motivation** to act on that knowledge by participating in battery recycling.

The graphic below shows this ascending awareness.



While the collection rate is the best indicator of program performance, the act of returning primary and rechargeable batteries for collection should not be expected unless a consumer believes that primary and rechargeable batteries should be recycled and they know how to recycle them [NOTE: generally speaking, the public believes that recycling is a positive behavior].

As a complement to the collection rate measure, this plan will track:

1. Whether consumers know that primary and rechargeable batteries can be recycled; and
2. Whether they have recycled primary and rechargeable batteries.

In 2024, Call2Recycle utilized a third-party research firm, IPSOS Group, to conduct a consumer online survey. Quotas and weighting were used to ensure that the survey sample accurately reflected that of the Illinois population based on census data. This research established a baseline of battery recycling awareness and behavior (incidents), which was used to guide the education and outreach strategies and tactics.

Call2Recycle will conduct the same or similar research annually to measure the impact of its public education efforts. Increasing awareness and driving behavior at scale is a process that requires time and effort. Call2Recycle commits to gradually increasing battery awareness and behavior recycling by one (1) percent each year from 2026 until 2028.

Table 9 – Consumer Awareness and Behavior metrics

Consumer Awareness & Behavior	Baseline (2024)	2026	2027	2028
Awareness % of consumers who believe that household batteries (primary and rechargeable) can be recycled in Illinois	68%	69%	70%	71%
Incidence/Behavior % of consumers who recycled their batteries in Illinois in the past 12 months.	52%	53%	54%	55%

XI. ANNUAL REPORT AND PLAN AUDIT

A. Citations

Public Act 103-1033 Section 50. Reporting requirements

(a) By June 1, 2027, and each June 1st thereafter, each battery stewardship organization must submit an annual report to the Agency covering the preceding calendar year of battery stewardship plan implementation. The report must include the following:

(1) The report must include an independent financial assessment of a program implemented by the battery stewardship organization, including a breakdown of the program's expenses, such as collection expenses, recycling expenses, education expenses, and overhead expenses.

(2) The report must include a summary financial statement documenting the financing of a battery stewardship organization's program and an analysis of program costs and expenditures, including an analysis of the program's expenses, such as collection, transportation, recycling, education, and administrative overhead. The summary financial statement must be sufficiently detailed to provide transparency that funds collected from producers as a result of their activities in Illinois are spent on program implementation in Illinois. Battery stewardship organizations implementing similar battery stewardship programs in multiple states may submit a financial statement including all covered states, as long as the statement breaks out financial information pertinent to Illinois.

(3) The report must include the weight, by chemistry, of covered batteries collected under the program.

(4) The report must include the weight of materials recycled from covered batteries collected under the program, in total, and by method of battery recycling.

(5) The report must include a calculation of the recycling efficiency rates, as measured consistent with subsection (b) of this Section.

(6) The report must include a list of all facilities used in the processing or disposition of batteries, including identification of the facilities' location and whether the facility is located domestically, in an organization for economic cooperation and development country, or in a country that meets organization for economic

cooperation and development operating standards, and for domestic facilities provide a summary of any violations of environmental laws and regulations over the previous 3 years at each facility.

(7) The report must include, for each facility used for the final disposition of batteries, a description of how the facility recycled or otherwise managed batteries and battery components.

(8) The report must include the weight and chemistry of batteries sent to each facility used for the final disposition of batteries. The information in this subdivision (a)(8) may be approximated for program operations in Illinois based on extrapolations of national or regional data for programs in operation in multiple states.

(9) The report must include the collection rate achieved under the program, including a description of how this collection rate was calculated and how it compares to the collection rate goals under Section 30.

(10) The report must include the estimated aggregate sales, by weight and chemistry, of batteries and batteries contained in or with battery-containing products sold in Illinois by participating producers for each of the previous 3 calendar years.

(11) The report must include a description of the manner in which the collected batteries were managed and recycled, including a discussion of best available technologies and the recycling efficiency rate.

(12) The report must include a description of education and outreach efforts supporting plan implementation including, but not limited to, a summary of education and outreach provided to consumers, collection sites, manufacturers, distributors, and retailers by the program operator for the purpose of promoting the collection and recycling of covered batteries, a description of how that education and outreach met the requirements of Section 45, samples of education and outreach materials, a summary of coordinated education and outreach efforts with any other battery stewardship organizations implementing a plan approved by the Agency, and a summary of any changes made during the previous calendar year to education and outreach activities.

(13) The report must include a list of all collection sites and an address for each listed site, and an up-to-date map indicating the location of all collection sites used to implement the program, with links to appropriate websites where there are existing websites associated with a site.

(14) The report must include a description of methods used to collect, transport, and recycle covered batteries by the battery stewardship organization.

(15) The report must include a summary of progress made toward the program performance goals established under Section 30, and an explanation of why performance goals were not met, if applicable.

(16) The report must include an evaluation of the effectiveness of education and outreach activities. (b) The weight of batteries or recovered resources from those batteries must only be counted once and may not be counted by more than one battery stewardship organization. (c) If a battery stewardship organization has disposed of covered batteries through energy recovery, incineration, or landfilling during the preceding calendar year of program implementation, the annual report must specify the steps that the battery stewardship organization will take to make the recycling of covered batteries cost-effective, where possible, or to otherwise increase battery recycling rates achieved by the battery stewardship organization.

B. Annual Report

Beginning on June 1, 2027, and annually thereafter, Call2Recycle will provide an annual report to the Illinois EPA. The report will include, but not be limited to, the following:

1. **Independent financial assessment** of the program, with a breakdown of:
 - Collection expenses
 - Recycling expenses
 - Education expenses
 - Overhead expenses
2. **Summary financial statement** that includes:
 - Financing of the program
 - Analysis of program costs and expenditures (collection, transportation, recycling, education, administration)
 - Transparency of Illinois-specific spending
 - Breakout of Illinois data (if a multi-state report is submitted)
3. **Weight, by chemistry**, of batteries collected under the program
4. **Weight of materials recycled** from collected batteries:
 - Total weight
 - By recycling method
5. **Recycling efficiency rates**, measured per subsection (b)
6. **List of processing/disposition facilities**, including:
 - Location of each facility
 - Whether located domestically, in an OECD country, or a country meeting OECD standards
 - For US facilities, summary of environmental violations in the past 3 years
7. **Description of final disposition facilities' processes** for recycling/managing batteries
8. **Weight and chemistry of batteries sent to each final disposition facility**
 - May be based on national/regional extrapolations if multi-state
9. **Collection rate achieved**, with:
 - Calculation method
 - Comparison to Section 30 goals
10. **Estimated aggregate battery sales** in Illinois (by weight and chemistry) for the past 3 years
11. **Description of battery management and recycling methods**, including:
 - Best available technologies
 - Recycling efficiency rate
12. **Education and outreach efforts**, including:
 - Summary of outreach to consumers, businesses, sites, manufacturers, distributors, retailers
 - How it met Section 45 requirements
 - Samples of outreach materials
 - Summary of coordinated outreach with other organizations
 - Summary of outreach changes during the year
13. **List and map of all collection sites**, including:
 - Addresses
 - Links to associated websites (if available)
14. **Methods used for collection, transport, and recycling** by the organization
15. **Summary of progress** toward Section 30 performance goals, including:

- Explanation if goals were not met

16. Evaluation of education and outreach effectiveness

17. **Note on counting:** Battery weight or recovered resources must only be counted once per organization

18. **Disposal reporting:** If batteries were disposed of (via energy recovery, incineration, or landfill):

- Steps to improve cost-effectiveness of recycling
- Steps to increase recycling rates

C. Plan Audit

In 2031, an independent third party will conduct the one-time program assessment of the battery stewardship program, as required by Legislation. In addition to providing the assessment to the state, the results and insights gleaned from the initial plan audit will be used to enhance the program, as appropriate. The scope of the assessment will be based upon IEPA and Call2Recycle's coordinated criteria to meet the legislative requirements and generate valuable program insights.

APPENDIX A - PRODUCERS IN CALL2RECYCLE PROGRAM

Steward Name	Contact Name	Phone Number	Rechargeable	Primary
3M Company	Rob Stemm	651-736-3878	✓	✓
ACCO Brands - Derwent	Mollee Gray	800-222-6482	✓	✓
ACCO Brands - Kensington	David Miller	800-222-6482	✓	✓
ACCO Brands - Lucid Sound	Elena Zhong	800-222-6482	✓	✓
ACCO Brands - PowerA	Elena Zhong	800-222-6482	✓	✓
ACCO Brands - TruSens	Marla Reichard	833-878-7637	✓	✓
Ace Hardware Corporation	Leigh Levinson	630-099-8819		✓
Acer America Corporation	Elaine Tam	408-053-7700	✓	
ADI Division of Resideo	Oscar Herrera Diaz	631-069-1000	✓	
Aero Design, Inc	Katia Silva- CFO	615-754-7700	✓	
Albertsons Companies, Inc.	Greg Haughton	208-395-6200		✓
Amazon.com, Inc.	Bill Shaklee	650-042-1100	✓	✓
American Honda Motor Co, Inc.	Shanna Vieux	678-339-2586	✓	
American Lawn Mower Company	Jacob Weed	800-633-1501	✓	
American Longray LLC	John Lau	415-830-9494	✓	
American Toppower	Frank Yan	732-082-1000	✓	
AOB Products Company	Mike Galloway	573-060-2459	✓	
APC America Inc. Schneider Electric	Raymond Lizotte	978-093-4141	✓	
Apple Inc	Desiree Claypool	704-060-8773	✓	
Arlo Technologies, Inc.	Daphne Su	760-047-8700	✓	
Arris Solutions, Inc	Ciro Frias	678-047-8763	✓	
Asus Computer International, Inc.	Julie Kuo	510-073-3777	✓	
Away	Alexandra Iovanelia	336-029-3639	✓	
Baccus Global LLC	Patrick Wright	561-036-4900	✓	
Balmuda Inc.	Tatsuya Suzuki	+81-03-5293-6279	✓	
barnesandnoble.com, LLC	Jon Dobrowski	212-035-3806	✓	
Bayco Products, Inc.	Mark Situ	469-032-9400	✓	
Belkin International, Inc.	Aamber Blake	310-075-2822	✓	
Best Buy Co., Inc.	Beth Steiner	612-029-3406	✓	✓

Steward Name	Contact Name	Phone Number	Rechargeable	Primary
Bissell Homecare, Inc	Mitch Bredberg	616-045-4451	✓	
BK Technologies	Tina Boucher	321-953-7915	✓	
Bosch eBike Systems	Raymond Emmanuel	248- 971-5711	✓	✓
Bose Corporation	Hugo Vilela	508-766-7230	✓	
Bren-Tronics, Inc.	John Bungart	631-499-5155	✓	
Brother International Corporation	Patricia Mamchur	908-070-1700	✓	
Canon USA., Inc.	Amanda Vercellone	631-033-2179	✓	
Car Mate USA Inc.	Junpei Tomonaga	310-053-1647	✓	
Chervon HK Limited	Steve Gilbert	331-215-9530	✓	
Chervon HK Limited/ACE	Cassie Zhou	313-215-9530	✓	
Chervon HK Limited/Amazon	Celine Sun	313-215-9530	✓	
Chervon HK Limited/Lowe's Rona	Helen Wang	331-215-9530	✓	
Chervon HK Limited/Menards	Janet Ding	331-215-9530	✓	
Cisco Systems Canada Co.	Kim van Vann Elk	408-052-4449	✓	
Clarios, LLC.	Micah Mahnke	855-824-8109	✓	
Cleva North America, Inc.	Alain Duque	864-033-1210	✓	
Colgate-Palmolive Company	Josh Glasser	732-878-6898	✓	✓
Computer Technology Link Corp (DBA CTL)	Michael Mahanay	503-050-5211	✓	
Conair LLC	Stephen Pizzolato	203-035-9458	✓	
Current Lighting HoldCo., Inc.	Jeremy Yon	216-233-2384	✓	✓
Custom Accessories, Inc.	Larry Liebau	847-630-4255	✓	✓
CVS Pharmacy, Inc.	Amitabh Sheth	401-770-9725	✓	✓
DANTONA INDUSTRIES, INC.	Don Dantona	561-783-5050	✓	✓
Daye North America	Gray Abercrombie	704-059-1258	✓	
Deere & Company (John Deere)	Niraj Dubey	309-765-8000	✓	✓
Dell Inc	MELISSA MALLORY	512-072-5436	✓	
Delta Faucet Company	Michael Johnson	317-848-0736	✓	✓
Deltran USA LLC	Carson Clarke	386-736-7900	✓	
Dollar General Corporation	Shawn Gorman	615-085-5437		✓
Dollar Tree Stores, Inc.	Aaron Scolnick	757-321-5000		✓
Dongguan Veken Battery Co., Ltd.	Yanli Yang	+86-76-9810-19588	✓	
Doosan Bobcat North America, Inc.	Chris Mortenson	701-241-8700	✓	
Dorcy International	Kathy Verhoeven	614-497-5830	✓	✓
Dorel Juvenile Group	Dan DeSimone	508-216-1843		✓
Duracell US Operations	Accounts Payable	800-551-2355	✓	✓
Dynabook Americas, Inc	Vu Phan	949-587-6400	✓	
Dyson	Jessica Anderson	312-846-7714	✓	
Eaton Corporation	Virginia Snyder	216-523-5000	✓	
Eiko Global LLC	Yavor Kolarov	800-852-2217	✓	
Electrolux Home Products, Inc.	Allie Tyler	800-282-2886	✓	
Eli Lilly and Company	William Wilz	317-450-2137		✓
Emerson Professional Tools Company (RIDGID)	Elliott Snyder	440-329-4676	✓	✓
Emerson Tool Co. (Proteam)	Matt Reimers	208-377-9700	✓	

Steward Name	Contact Name	Phone Number	Rechargeable	Primary
Empower Brands, LLC.	Tom Baumgard	608-275-4490	✓	✓
Energizer Holdings, Inc.	Kevin Rejent	314-985-2000	✓	✓
EnerSys Delaware Inc.	Randy Reyer	610-208-1874	✓	
Epson America, Inc.	Doan Nguyen	562-981-3840	✓	
EVE Energy Co., Ltd.	Tan Hui Feng	851-206-0339	✓	
EVOLUTION POWER TOOLS, LLC	Jeremy Esch	563-285-1252	✓	
Family Dollar LLC	Tax Department	757-3215000		✓
Fdk America, Inc.	Bin Fei	408-215-6472	✓	✓
FEIN POWER TOOLS INC	Susan Cooper	800-441-9878	✓	
Finish Thompson, Inc.	Casey Bowes	814-455-8518	✓	
Foto Electric Supply Co. Inc.	Jared Melnicoff	212-260-0666	✓	
Fourstar Group USA, Inc.	Donna Anastas	508-473-7388		✓
FujiFilm Holdings America Corp	Girish Menon	914-789-8293	✓	
Garmin International, Inc	Michael R. Weigers	913-397-8200	✓	✓
Getac Inc.	Shannon Baronowski	901-482-6656	✓	
Global Technology Systems, Inc	Ashley Anderson	508-650-1172	✓	
Google LLC	Jeff Kuypers	650-253-7177	✓	✓
GoPro, Inc.	Ray Faga	888-600-4659	✓	
GP Batteries International Ltd.	Taurus Chu	852-024-3111	✓	✓
Greenworks (Jiangsu) Co., Ltd	Vincent Du	+15-86-117-9016	✓	
GS Yuasa Energy Solutions, Inc.	George Tsai	678-739-2114	✓	
Guangdong Fenghua New Energy Co., Ltd. Shenzhen Branch	Wu Zhi Cai	382-264-9987	✓	
Guangdong Greenway Technology Co., Ltd	Li Xing	+76-92-22-0098	✓	
HAMILTON BEACH BRANDS, INC.	Paul Blankenship	804-527-7326	✓	
Hannaford Supermarket	Matthew Ater	704-310-3527		✓
Hansgrohe, Inc.	Derek Taylor	800-334-0455		✓
Harman International Industries, Incorporated	Helen Omapas	818-895-3733	✓	
HD Supply Holdings, Inc.	Chris Collins	770-852-9627		✓
Hewlett Packard Inc	Barbora Strachotova	650-857-1501	✓	
Hilti, Inc.	Elise Schoonmaker	866-445-8827	✓	
HMD America, Inc.	Genevieve Silveroli (Ms.)	214-919-9950	✓	
Honeywell Business Automation (BA)	Dawn Browne	203-484-6498	✓	✓
Honeywell International Inc.	Martyn Rowe	973-889-8934	✓	✓
Honeywell Process Management & Control (PMC)	Thom Stewart	847-955-8251	✓	
Honeywell Productivity Solutions (PSS)	Murugan Tk	800-782-4263	✓	
Honeywell Safety Products USA, Inc.	Adriana Velasco	800-873-5242	✓	✓
Honeywell Sensing Solutions (HSS)	Mohammed Gazzali	800-537-6945	✓	
HP Inc.	Melissa Cobb	970-692-6732	✓	
HTC Corporation	Johnson Yang	886-337-3252	✓	

Steward Name	Contact Name	Phone Number	Rechargeable	Primary
Huizhou Highpower Technology Co., Ltd.	JiYong Xie	852-356-0188	✓	
Husqvarna AB	Steven Kern	704-597-5000	✓	
Hypertechnologie Ciara Inc. dba Hypertec HTS	Ali Khosroshahi	514-745-4540	✓	
HYTORC Division UNEX Corporation	Jason Junkers	201-512-9500	✓	
IDX System Technology Inc	Ikuyo Kawano	310-891-2800	✓	
IKEA North America Services, Inc.	Mardi Ditze	484-238-6440	✓	✓
Inspired Energy, LLC	James Puckhaber	352-472-4855	✓	
Intermetro Industries Corp	Rocky Selenski	570-706-3121	✓	
International Business Machines Corporation (IBM)	Amie Guy	180-042-4968	✓	
Interstate All Battery Center of Rutland	Adam Reed	802-786-9075		✓
Intex Recreation Corp.	Zoran Madzar	310-549-5400	✓	
Invacare Corporation	Vicki Frisbie	440-329-6000	✓	
i-PRO Americas Inc.	Michael Baumann	713-621-9779	✓	
iRobot Corporation	Brian Milner	781-430-3031	✓	
ITW Construction Products	Stephen Moore	847-918-6489	✓	
Jasco Products Company	Rudy Hauck	405-302-2116	✓	
JC Technology Inc dba Ace Computers	John Samborski	847-952-6900	✓	
Jiangmen TWD Technology Co, LTD	Kay Lu	867-503-0246	✓	
Jiangsu DongCheng M&E Tools Co.,Ltd	Cai Jun	+86-05-13-8329-3828	✓	
JLG Industries Inc	Jeannie Mcquade	877-554-5468	✓	
JVCKENWOOD USA Corp	Ted Marks	973-317-5000	✓	
Keyence Corporation of America	Ops Department	888-539-3623	✓	
Koki Holdings America Ltd	Leigh Bailey	770-279-4293	✓	
Kraus USA Plumbing LLC	Brittany Bartolotta			✓
Kyocera Precision Tools	Leanne Schumacher	330-688-6667	✓	
Kyocera Senco Products, Inc.	David Kohlmayer	513-388-2986	✓	
L3Harris Technologies Inc	Costa Triantafyllidis	321-729-3928	✓	
Ledvance, LLC.	Jennifer Dolin	978-753-5158	✓	
LEGO Brand Retail, Inc.	Aurora Chapa	528-121-3730	✓	
Lenovo (United States) Inc.	Kim Fox	919-294-2833	✓	
LG Electronics USA, Inc.	Madeline Smith	201-408-9141	✓	
L'Image Home Products Inc.	Karine Robillard	514-383-4720	✓	
Logic Technology Development	Emil Weiss	609-525-4420	✓	
Logitech Inc.	Sinead McCabe	360-817-1303	✓	✓
Lutron Electronics Co., Inc.	Daniel Somavilla	484-273-6635	✓	✓
Luxottica of America	Sara Francesutto	513-765-6000	✓	
Mag Instrument, Inc	Jim Zecchini	909-947-1006	✓	
Maha Energy	Nancy Fu	626-363-9017	✓	
Makita USA. Inc.	Wayne Hart	714-522-8088	✓	

Steward Name	Contact Name	Phone Number	Rechargeable	Primary
Masco Canada Limited	Anand Ahuja	800-345-3358		✓
Mattel, Inc.	Heather Bramble	310-252-3384	✓	
MAX Co., Ltd	Kuni Kobayashi	+81-33-66-8131	✓	
Meta Platforms Technologies, LLC	Matthew Dickman	617-642-2058	✓	
Microsoft Corporation	Cintia Gates	512-795-5711	✓	
Midland Radio Corporation	Jeremy Pensick	816-241-8500	✓	
Miller Manufacturing Company	Shannon Jurgens	651-982-5100	✓	
MillerKnoll, Inc.	Yolanda Pagano	215-679-1009	✓	
Motorola Mobility, LLC	Mary Ann Bliss	847-809-4860	✓	
Motorola Solutions, Inc.	Theresa Jordan	203-065-7310	✓	
myCharge	Nick Moczarski	888-251-2026	✓	
Neptune Technology Group Inc.	Steve Beasley	334-283-6555	✓	
Netgear, Inc.	Emma Tsai	408-907-8000	✓	
Newleader Battery LTD.	Yolanda Jiang	+85-22-79-06280		✓
Nikkiso Medical America, Inc	David Carlson	858-222-6320	✓	
Nikon Inc. EL3R	Kevin Carroll	631-650-1210	✓	
Nintendo of America, Inc.	Brandon Smith	425-340-3465	✓	
Nomo International, Inc.	David Baer	844-888-8854		✓
Normark Innovations Inc.	Kuangshun Fan	952-933-7060	✓	
Nuna Baby Essentials, Inc.	Steve Gerhart	610-913-5100	✓	
NVIDIA Corportion	Chelsea Verhasselt	408-486-2000		✓
Ocoopa	Jie Tang	+86-18-17-5131-009	✓	
OM-Digital Solutions Americas, Inc.	Frances Reilly	484-896-5000	✓	
Oracle America, Inc.	Nienske Pagen	303-974-3236	✓	✓
Otter Products LLC	Barry Phillips	858-924-1694	✓	
Pale Blue Earth	Thomas Bishop	435-714-3424	✓	
Panasonic Corporation	Yoji Takagi	201-348-7000	✓	✓
Pelican Products, Inc.	Kenn Araujo	310-326-4700	✓	
Pellenc America Inc.	Patrice Abert	707-568-7286	✓	
Philips	Nicole Anagnostaras	508-983-4619	✓	✓
Pitney Bowes, Inc.	Karl Allenmaher	203-922-5752	✓	
Polaris, Inc.	David Wilson	248-277-9476	✓	✓
Police Security Flashlights	Betsy Craig	866-880-9297	✓	
Positec Tool Corporation	Charles Jenkins	704-599-3711	✓	
Powermax Battery USA, Inc.	Ryan M Golden	909-945-2111		✓
Poynt, LLC	Ray Tanaka	720-500-0310	✓	
QD Laser America, Inc.	Masaru Kuwabara	424-365-9870	✓	
Razor USA LLC	Tony Rodriguez	866-467-2967	✓	
Ricoh Imaging Americas Corporation	Kousuke Ito	416-882-0357	✓	
RJ Reynolds Vapor Company	Renee Angelilli	356-741-0363	✓	
Robert Bosch LLC	Matthew Messmer	331-264-5089	✓	
Robert Bosch Tool Corporation	Marcin Gres	877-267-2499	✓	
RRC POWER SOLUTIONS	Richard Janzen	714-777-3604	✓	

Steward Name	Contact Name	Phone Number	Rechargeable	Primary
Rubies II, LLC	Madelaine Valenti	516-333-3473		✓
Saicome Industries Limited	Brian Wong	650-654-3400	✓	
Samsung Electronics America Inc.	jane kang	973-808-6373	✓	
Sato America Inc	Tom Crabtree	704-236-3053	✓	
Savant Technologies LLC	P. Henry Nieman	216-266-2201		✓
Scosche Industries, Inc.	George Barrios	800-363-4490	✓	
SDI Technologies Inc	David Stetin	800-333-3092	✓	
Shanghai PYTES Energy Co., LTD	Maggie Zhang	+86-21-5747-3666	✓	
SharkNinja Operating LLC	Noushka Seher	617-077-8826	✓	
Sharp Electronics Corporation	Tracey Pruitt	800-237-4277	✓	
Sharp Group Development Limited	Christel Dixon	866-915-8626	✓	
Shenzhen FBtech Co., Ltd.	Daphne Zeng	+86-75-5817-02432	✓	
Shenzhen Highpower Technology	Lili Zhang	+86-13-8236-61652	✓	
Sigma Corporation	Naoto Yabase	817-015-7724	✓	
Signature Brands, LLC	Ben Waring	877-726-8793		✓
SIRIUS XM RADIO LLC	James LeFebvre	609-512-9074		✓
Snap-on Incorporated	Patrick Healy	262-656-6101	✓	
Solventum US LLC	Ravishankar Bagalur Sampangiramaiah	612-842-1263	✓	
SONOS, INC.	Eddie Lazarus	800-680-2345	✓	
Sony Electronics Inc.	Accounts Payable Payable	800-039-0651	✓	
Southwick Technologies, LLC	Penny Havig	641-357-7460	✓	
Southwire Company, LLC	Rebecca Cranford	770-832-4613	✓	
Springpower Technology (Shenzhen) Co., Ltd.	Lin Yanhui	+75-56-1862-699	✓	
SRAM, LLC	Rachel Schultz	312-664-8800	✓	
Stanley Black & Decker, Inc.	Daniel Fitzgerald - Steward	860-827-3825	✓	✓
Stihl Incorporated	Michael Weber	800-467-8445	✓	✓
StorTronics	Tami Mell	248-912-1200	✓	
Streamlight, Inc.	Dana Fox	610-631-0600	✓	
Surefire, LLC	Nathan Wolfe	805-750-1786	✓	✓
Target Corporation	Marshall Lin	800-587-2228		✓
TCT MOBILE INC-ALCATEL BlackBerry	Yao Dai	949-233-1959	✓	
Techtronic Cordless GP	Janet Ko	852-240-6888	✓	
Tenergy Corp	Billy Gong	510-687-0205	✓	
Tennant Company	Samantha McKeough	763-540-1323	✓	
Test Rite Products Corp	Erica Mercado	909-605-9899	✓	
Texas Instruments Inc	Martign Bos	972-995-3333	✓	
The Coleman Company	Hannah Huffman	316-832-2653	✓	
The Gillette Co/Braun Div	Arthur Waite	617-463-6317	✓	✓
The Gillette Co/Oral-B Div	Arthur Waite	617-463-6317	✓	✓
The Home Depot USA Inc.	Jeff Kornreich - Invoice/PO Issues	770-433-8211		✓

Steward Name	Contact Name	Phone Number	Rechargeable	Primary
The NOCO Company	Neil Smith	440-241-5440	✓	
The Toro Company	Riley Bengtson	952-888-8801	✓	
Tomy International, Inc.	Jan Goedken	563-875-5651	✓	
Tonies US, Inc.	Christoph PMMM Frehsee	720-050-0310	✓	
Toyota Motor North America	John Redman	800-331-4331		✓
Tractor Supply Company	Pat Perry	615-440-4000		✓
Transcosmos America Inc.	Eric Hladilek	310-245-0705	✓	
Transource Services Corp	Noe Gonzalez	623-879-8882	✓	
Traxxas L.P.	Carl Williams	888-812-9927	✓	✓
Trek Bicycle Corporation (Trek, Electra)	Travis Meikle	920-478-2191	✓	
TruRide Tech, LLC	Ronnie Chen	646-464-1557	✓	
TTE Technology D/B/A TCL North America	Moamar Mustafa	949-233-1959		✓
TTEK Assemblies Inc.	Michael Line	218-389-6187	✓	
TV Hardware Distribution LLC	Donna Courchesne	603-079-2935		✓
Ultralife Corporation	Dave Gould	315-332-7100	✓	
Uniden America Corporation	Steve Roby	817-858-3300	✓	
Valve Corporation	Scott Lynch	425-889-9642	✓	
VARTA Microbattery Inc.	James Bremner	914-345-0488	✓	
Veritas Technologies LLC	Raquel Alonso	+44-77-1002-3463	✓	
Verkada, Inc.	David Stone	214-497-3411	✓	
Vernier Software & Technology LLC	Brian Gilstrap	503-277-2299	✓	
Vibratex, Inc.	Eddie Romero	707-226-8888	✓	
ViewSonic Corporation	Michelle Toda	909-444-8888	✓	
Vornado Air, LLC	Rachel Dickerson	316-733-0035	✓	
VTech Telecommunications Ltd	Alan Fung	800-595-9511	✓	
Wahl Clipper Corporation	Tim Trader	815-625-6525	✓	✓
Wellness Marketing DBA Endless Pools	Ben Lucey	800-732-8660	✓	
Whill, Inc	Rina Asano	844-699-4455	✓	
Zebra Technologies Corporation	Accounts-Payable Dept	847-079-9861	✓	
Zhejiang KAN Battery Co., Ltd	Bonnie Bu	+86-57-8818-1596	✓	
Zippo Manufacturing Company	Claude Mays	814-368-2881	✓	

APPENDIX B: EXEMPT PRODUCER WHEN BATTERY STEWARDSHIP PLAN IS APPROVED

EXEMPT PRODUCER	BRAND NAME	PRODUCT NAME	BATTERY SUPPLIER
NOMO INTERNATIONAL	NOMO	NOMO SMART CARE	NEWLEADER BATTERY

APPENDIX C - BRANDS IN CALL2RECYCLE PROGRAM

Brand Name	Brand Name	Brand Name
3M	Forum Novelties	Panasonic
3M Healthcare	Frigidaire	Paslode
100% Peak Power	Fuji	Pedego
A&I / CabCAM	FUJIAN	Peerless
ACE	Fujifilm	Peg Perego
Acer	Fujitsu	Pelican
Adflo	Game & Watch	Pellenc
ADI	Gaomei	Peltor
Albeo	Gardenline	Pentax
Alber e-Fix	Garmin	Philips
Alber e-Fix Eco	Gateway	Pinarello
Alber e-Motion	Gazelle	Pitney Bowes
Alber Scalamobil	GE	Pivot
Alber Smoov	Generate	Plantronics
Alber Twion	Generic	Police Security
Albion	Genesis EP	Poly
Alfa	Genesis XE	Polycom
Alienware	GENIUS	PORTALAC
All-Clad	Getac	Poulan Pro
Alta	Giant	PowerA
Altice	Giant Foods	Powerex
Amazon Basics	Gigaset	Powerflo
American Toppower	GoCycle	Powergear
APC	GoDaddy Poynt	PowerOne
Apple	Go Direct (GDX)	Powerworks
Aquatec Bath Lifts	GoFree Flex Pro	PowerXL
ARLO	Goldtop	Poynt
Armor All	Google	PPS
ARRIS	Google Nest	Praxis
Arts Energy	GoPro	Prescolite
Aston	GO TOUGH	Priority Bicycles
Astro	Go Wireless (GW)	Pro Batteries
AT&T	GP	Probuilt
Athena	Greenlee	ProCell
ATOM	Green Machine	Proctor Silex
Away	Greenway	ProGuad 3
AXOR	Greenworks	PROSeries
Baylis	Grilla	Proto
Baby Shark	Hamilton Beach	Psion
Balmuda	Hannaford	Pumpkin Masters

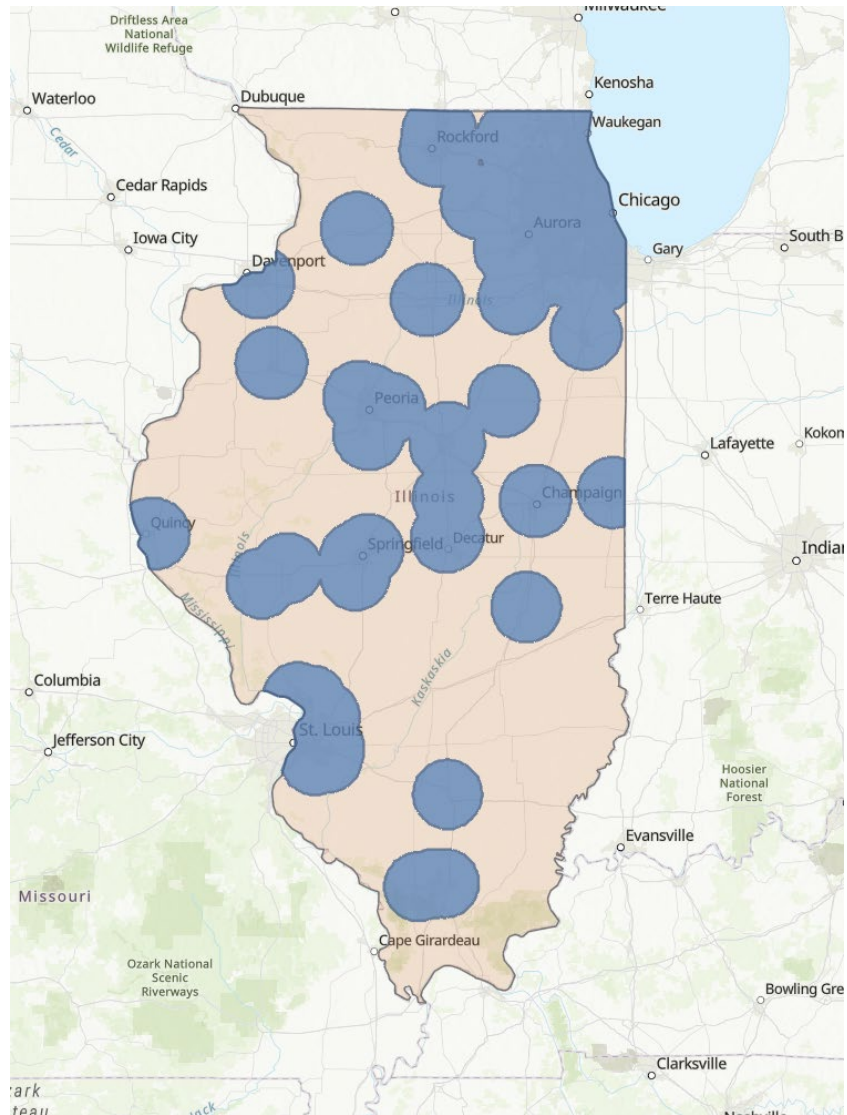
Brand Name	Brand Name	Brand Name
Basics	Hansgrohe	Pure Cycles
Batch	Harding Energy	PWR
Batman	Haro	Quality Bicycle Products
Batteries Plus	Hart	Quartet
Battery Tender	HDE	Ramset
Bayco	HD Supply	Ray-Ban
Bcycle	HDX	Rayovac
Beatsync	Herman Miller	RAZO/d'Action
Belkin	Hewlett Packard Enterprise	Razor
Benno Bikes	Highpower	REDLITHIUM
Best Buy Essentials	Hilti	RedMax
Bianchi	Hitachi	Remington
BizTalk	Honda	Ricoh
BKR Radio Line	Honeywell	Riese & Mueller
Black & Decker	Hoover Commercial	Robomow
Blue	Hooyman	Rocketfish Advanced
Blue Ridge	Hotshot	Rockwell
Boon	HP	Rocky Mountain
BOOST	HSM	Rogers
Bosch	HTC	Rongen
Bose	HUI ZHOU DESAY	Ronson
Bostitch	Husqvarna	Roomba
Braava	Hustler	Rotozip
Brand Castle	HVR-PWR	RRC Power Solutions GmbH
Braun	Hyper Tough	RRC Power Solutions Inc.
Breathe Easy	i-Pro	Ryobi
Breezer	IBM	Ryobi, Homelite
Bren-Tronics Inc	ICC-Nexergy, Inc	Safety 1st
Bright House Networks	IE	Saitek
Brizo	IKEA Supply AG	Salsa Cycles
Brompton	Infinity Labs	Samsung
Brother	Insignia	Santa Cruz
Bubba	Inspired	Sanyo Energy
Bulls	Inspired Energy	Sato Corporation
Bunch	Intermec	ScaleGard
Cablevision	Interstate Batteries	Schneider
Cannondale	Intex	Scosche
Canon	Invacare	Scott
Canyon	IPC	SDI
CAT	izip	Security Lighting
Catepillar	JAM & JELLY	Senco
Catrike	Jaybird	SharkNinja

Brand Name	Brand Name	Brand Name
CEL	Jaybird	Sharp
Cervelo	Jetson	Shaw
CHARGEWORK	JLG	Shimano
Charter	JobSmart	SIGMA
CIARA	John Deere	Signature Brands
Cisco	Jonsered	Signature Care
Co-Op	Joy-Con	Signature Select
Cogeco	JVC	Signify
Coleman	K2 Battery	SKIL
Colgate	KAN	SkilSaw
Columbia	Kenmore	Snapper
Comcast	Kensington	SNOM
Compass	Kenwood	Solimo
Conair	Keyence	Solventum
CopperTop	Kindle E-Reader	Sonos
CORUN	Kindle Fire	Sony
Cosco	Kirkland Signature	Southwick
Cosco Kids	KitchenAid	Specialized
Cox Communications	Klutch	Speedglas
Craftsman	Kona	Springer McGrath
CTL	Kraus	SRAM
Cub Cadet	Kress	Stanley
Cube Bikes	Kurt Versen	Stihl
Cuisinart	LabQuest	STIHL
Custom Accessories	Laird	StockAde
CVS Batteries	LaTrax	Streamlight
Cyclon	LaTrax	Sudden link
Cync	Lawnmaster	Sunbelt
Daintree	Leapfrog	Sun Bicycles
Datamax	LEGO	SUN GUN
DataSafe HX	LEGO Education	Sun Seeker Recumbants
DataSafe NPX	Lenovo	Superbolt
DCA	Lexel	Surface
DCK	LG	Surly Bikes
Dell	LG Signature	Swingline
Delta	LifeProof	SYLVANIA
Delta Commercial	Lifeshield	Symbol
Denali	Litecontrol	Tadiran LTD
Derwent	Lithium Werks	TandemEZ
Devinci	Liv	TCL
DeWalt	Lively	TEIG
Dewalt	Logi	TELUS

Brand Name	Brand Name	Brand Name
DG	Logic Power	Tenergy
Diamondback	Logitech	Tennant
Diehard	Logitech G	Tera
Do	Longray	Tern
DongCheng	Lucid Sound	Texas Instruments
Dorcy	Lumination	The First Years
Dorcy Industrial	Lutron	The Sharper Image
Dorcy LifeGear	Mac Tool	TI
Dremel	Magic Wand	Time Warner
Dual-Lite	Maglite	TiVo
Duracell	Mahle	Tommy
Duracell Activair	Makita	Tomy
Duracell Coppertop	Marin	Tonies Box
Duracell Coppertop Ultra Power	Mastercell	Top End Force NRG
Duracell Mallory	Mattel	Top End Force RX Handcycle
Duracell Optimum	MAX	Toro
Duracell Plus	Maxi Cosi	Toshiba
Duracell Power Pix	McCulloch	Toyota
Duracell Prismatic	Measuring Tools	TQ
Duracell Procell	MEDIACOM	Transource
Duracell Quantum	Meguiar's	Traxxas
Duracell Rechargeable	Metabo HPT	Trek
Duracell Ultra	Mevo	Troy-Bilt
Duracell Ultra Advanced	Mevo Inc.	TruSens
Dynabook	MIDCONTINENT	TWD
Dynatel	Midland	TYTUS
Dynex	MightCell	Ultimate Ears
Dyson	Milwaukee	Ultrak
e-CIRCUIT	MistGen	Ultralast
E-Ready	Modal	UltraLife
Earthwise	Momentum	Ultralife
Eaton	Monbebe	Ultra Steel
Eaton 3S	Moonrays	Uniden
Eaton 5P	MOTIX	Up & Up
Eaton 5SC	Motorola	Urban Arrow
Eaton 9PX	Motorola Solutions	Vacmaster
Eaton 9SX	Mowox	VAIO
ECHO	Murata	VDL
GO	MX Fuel	Veritas
EGO Commercial	myCharge	Verkada
EiKO	Neptune	Versaflo

Brand Name	Brand Name	Brand Name
Electra	Newleader	Videotron
Electrolux	Nightstick	ViewSonic
Element	Nintendo Switch	Vista
Elipar	Nintendo Switch - OLED Model	VIVE
ENDURA	Nintendo Switch Lite	VIZIO
Energizer	Nintendo Switch Pro Controller	Vocollect
EnerSys	Nobles	Vornado Air, LLC
Epson	NOCO	VTech
Equate	Nokia	Vuse
ERTL	Nomo	Vvoltage
Eve	Nomo Smart Care	Wahl Home Products
Eveready	Nook	Wahl Professional
Everstart	Norco	Waring
Evil	Nord-Lock	Way to Celebrate
EVO	Northern Lights	WDSS
Evolution Power Tools	Nuna Baby Essentials	Weedeater
Excell	NVIDIA Shield	Weston
Exide Technologies	NX Lighting Controls	Whill Model C2/F Series
Exmark	Ocoopa	Whiteway
Facom	Odyssey	Wizard of Oz
Fat Brand Toys	Olympus	Workaholic
Fazua	OM Digital System	WorkTunes
FDK	OM System	Worx DIY
FiberSafe	ONEPWR	Worx Garden
Fifield	Onesource	WOW
Filtrete	OPTIMA Batteries	X-Talker
Finish Thompson	Optimum	Xbox
First Wave	Oracle	Xfinity
Fisher Price Battery	Oral-B	Yamaha
Fitbit	Oreck	Yeti
Flame Glow	Ortholux	YT
Flash	Oster	YUASA
FLEX	Otterbox	YUBA
Flex-Force	PAAS	YUVOLT
Flyer Bikes	Pace	Zebra
Forum Lighting	Pale Blue Earth	Zippo
	Panasonic	

APPENDIX D – ACCESSIBILITY MAP – ILLINOIS



IL Total Pop 2024 – 124,69,560; Total Covered – 112,47,570;
Accessibility % at 15 miles - 90.2%

APPENDIX E – PUBLIC COLLECTION SITES

Account Name	Address	City	State	Zip	Contact	Phone Number
7 Mile Cycles	45 S Arlington Heights Rd	Elk Grove Village	IL	60007	Vince Boyer	847-439-3340
Ace Hardware of Bethalto	1 Airway Ct	Bethalto	IL	62010	Todd Dodson	618-259-5252
ADI - CH-EG	509 Busse Rd	Elk Grove Village	IL	60007	Tony Falcon	847-472-2900
Amazon - Westmont	30 W 63rd St	Westmont	IL	60559	Manger Store	800-250-0668
ASU Cycles - Downtown Aurora	14 W DOWNER PL, STE 10	Aurora	IL	60506	Tom Cassidy	630-907-7366
Asurion Tech Repair & Solutions	2587 Sycamore Rd	Dekalb	IL	60115	Store Manager	815-517-1193
Avant Cycle - Woodstock	132 Cass St	Woodstock	IL	60098	Kyle Busse	815-308-5840
b&g cyclery	131 east Rollins Rd	Round Lake Beach	IL	60073	robert Hager	847-740-0007
BFF BIKES	2056 N Damen Avenue	Chicago	IL	60647	Gillian Forsyth	773-666-5153
Bike Surgeon	201 E State St	Ofallon	IL	62269	Jon GreenSt	618-622-1693
Bike Surgeon - Carterville	402 e plaza dr	Carterville	IL	62918	Gabriel Arnone	618-457-4521
Bike Tek Inc	957 Clocktower Dr	Springfield	IL	62704	Nancy Thompson	217-787-2907
Bloomington Cycle & Fitness	915 E Washington, Ste 1	Bloomington	IL	61701	Mick Hannah	309-820-8036
Bosch Factory Service Center	901 S Rohlwing Rd Ste C	Addison	IL	60101	Kevin Kluever	630-705-7855
Bushwhacker	5728 N Knoxville	Peoria	IL	61614	Sam Joslin	309-692-4812
Chicago Communications	200 W Spangler Ave	Elmhurst	IL	60126	Lisa Macgillivray	630-832-3311
City of Sterling	212 3rd Ave	Sterling	IL	61081	Margarita Guernsey	815-632-6624
Clark Devon Hardware	6401 N Clark St	Chicago	IL	60626	Jay Fuentes	773-764-3575
DeWalt Factory Service Center	901 S Rohlwing Rd Ste A	Addison	IL	60101	Emma Ontiveros	630-521-1097
Direct Tools Factory Outlet	1650 Premium Outlets Blvd	Aurora	IL	60502	Store Manager	630-907-7626
Elgin Community Bikes	119 S Grove Ave	Elgin	IL	60120	Parker Thompson	224-407-2124

Account Name	Address	City	State	Zip	Contact	Phone Number
Erik's Bike and Ski - Deerfield	636 Deerfield Rd	Deerfield	IL	60015	Manager DEER	847-572-5544
Erik's bike Shop - Skokie	3801 oakton st	Skokie	IL	60076	Manager SKOK	847-324-5134
Erik's Bike Shop-OBRK	1600 16th st	Oak Brook	IL	60523	Manager OBRK	630-822-7447
Gibson Ace Hardware	114 N Madison St	Clinton	IL	61727	Greg Monkman	217-935-9491
Goodspeed Cycles-Homewood	2125 183rd St	Homewood	IL	60430	Josh Klein	708-957-9888
Hometown Ace Hardware	6938 W Main St	Watertown	IL	62223	Patrick Lavery	618-397-2501
Horton's Ace Hardware	60 S La Grange Rd	La Grange	IL	60525	Julie Hollaway	708-352-2110
Kegel's Bicycle Store	2605 Charles St	Rockford	IL	61108	Robb Sinks	815-229-5826
Kin-Ko Ace Stores, Inc.	1037 E 9th St	Lockport	IL	60441	Tina Mueller	815-838-3310
Kozy's Cyclery - Milwaukee Ave	3255 N Milwaukee Ave	Chicago	IL	60618	Mathew Pitzer	773-282-0202
Kozy's Cyclery - Halsted	3712 North Halsted St	Chicago	IL	60613	George Egner	773-281-2263
Kozy's cyclery 219	219 W Erie st	Chicago	IL	60654	Peter Sheehy	312-266-1700
Lowe's	111 Davidson Drive	Mount Vernon	IL	62864	Store Manager	618-244-9400
Lowe's	1904 N Prospect Ave	Champaign	IL	61822	Store Manager	217-373-7300
Lowe's	531 W Carl Sandburg Dr	Galesburg	IL	61401	Becky Clark	309-342-4488
Lowe's	300 N Randall Rd	Lake in the Hills	IL	60156	Store Manager	847-458-0419
Lowe's	400 W Army Trail Rd	Carol Stream	IL	60188	Beverly Madison	630-456-9004
Lowe's	15601 S la Grange Rd	Orland Park	IL	60462	Store Manager	708-645-5301
Lowe's	2501 N Green Mount Rd	Belleville	IL	62221	Johnny Wooten	618-239-3900
Lowe's	159 Whistle Stop Dr	Glen Carbon	IL	62034	Peggy Wethington	618-655-2140
Lowe's	1440 S Route 59	Naperville	IL	60564	Store Manager	630-445-6226

Account Name	Address	City	State	Zip	Contact	Phone Number
Lowe's	3820 44th Avenue Dr	Moline	IL	61265	Store Manager	309-736-1100
Lowe's	1170 E Rendleman St	Carbondale	IL	62901	Store Manager	618-529-8400
Lowe's	1619 Homer M Adams Pkwy	Alton	IL	62002	Store Manager	618-474-9900
Lowe's	3601 W Touhy Ave	Lincolnwood	IL	60712	Store Manager	847-972-4041
Lowe's	3636 N Vermilion St	Danville	IL	61832	Store Manager	217-442-5200
Lowe's	5001 N Big Hollow Rd Ste 4	Peoria	IL	61615	Store Manager	309-692-1900
Lowe's	7130 E State St	Rockford	IL	61108	Nicki Lewis	815-394-1300
Lowe's	990 Hickory Pt Plz	Forsyth	IL	62535	Ken Whitsitt	217-876-9750
Lowe's	3101 Wabash Ave	Springfield	IL	62704	Michelle Shepard	217-787-2300
Lowe's	2630 N Narragansett Ave	Chicago	IL	60639	Store Manager	773-413-5120
Lowe's	6211 N Illinois St	Fairview Heights	IL	62208	Store Manager	618-398-6859
Lowe's	201 Riverside Dr	East Peoria	IL	61611	Wesley	309-694-0774
Lowe's	2101 E Empire St	Bloomington	IL	61704	Store Manager	309-661-6467
Lowe's	2560 N Dirksen Pkwy	Springfield	IL	62702	Store Manager	217-535-4540
Lowe's	990 W Algonquin Rd	Arlington Heights	IL	60005	Susan Schwietz	847-637-4240
Lowe's	245 S Weber Rd	Bolingbrook	IL	60490	Store Manager	630-343-3000
Lowe's	9700 N Alpine Rd	Machesney Park	IL	61115	Store Manager	815-654-5133
Lowe's	7971 S Cicero Ave	Chicago	IL	60652	Store Manager	773-306-7100
Lowe's	1000 Willow Rd	Northbrook	IL	60062	Colin Hutchins	847-418-4540
Lowe's	1660 N Milwaukee Ave	Vernon Hills	IL	60061	Felipe Castellano	847-876-2800
Lowe's	6030 BRdway St	Quincy	IL	62305	Store Manager	217-228-4250
Lowe's	1360 N Ashland Ave	Chicago	IL	60622	Store Manager	773-269-2560

Account Name	Address	City	State	Zip	Contact	Phone Number
Lowe's	2480 E Lincoln Hwy	New Lenox	IL	60451	Store Manager	815-215-6000
Lowe's	860 N Kinzie Ave	Bradley	IL	60915	Store Manager	815-933-5555
Lowe's	2050 Sycamore Rd	Dekalb	IL	60115	Store Manager	815-754-4800
Lowe's	955 S Randall Rd	Saint Charles	IL	60174	Store Manager	630-338-4000
Lucky Brake Bicycles	470 west virginia St	Crystal Lake	IL	60014	Ken Bremer	815-459-1833
Lucky Rollers	131 east rollins Rd	Round Lake Beach	IL	60073	cindy dorgan	224-337-8947
Makita Factory Service Center	185 Hansen Ct	Wood Dale	IL	60191	Arthur Au	847-297-3100
MIKES BIKE SHOP	155 N NORTHWEST HWY	PALATINE	IL	60067	Matthew Mikes	847-358-0948
Milwaukee Factory Service Centers	6310 W Gross Point Rd	Niles	IL	60714	Eduardo Gispert	847-588-3502
Nussbaum Ace Hardware	115 N 4th St	Fairbury	IL	61739	Store Manager	815-692-4488
Pedal & Spoke.com	157 S Lincolnway	North Aurora	IL	60542	Jonathon Flick	630-892-1010
Prairie Path Cycles - Batavia	160 W Wilson Rd	Batavia	IL	60510	Liam Doyle	630-406-9749
Prairie Path Cycles - Winfield	27W181 Geneva Rd	Winfield	IL	60190	Kirk Schimpf	630-690-9749
RACE PACE CYCLERY	1166 E Washington St	Grayslake	IL	60030	MICHAEL HUMPAL	847-231-6577
REI - Lincoln Park	905 W Eastman St	Chicago	IL	60642	REI-123 Manager	312-951-6020
REI - Northbrook	888 Willow Rd	Northbrook	IL	60062	REI-40 Manager	847-480-1938
REI - Oakbrook Terrace	17 West 160 22nd St	Oakbrook Terrace	IL	60181	REI-51 Manager	630-574-7700
REI - Orland Park	15515 S 95th Ave	Orland Park	IL	60462	REI-228 Manager	708-675-8946
REI - Vernon Hills	901 N Milwaukee Ave	Vernon Hills	IL	60061	REI-180 Manager	847-573-0356
Roscoe Village Bikes	2016 W Roscoe St	Chicago	IL	60618	Lesley Tweedie	773-477-7550
Rural Cyclery	21 S Main St	Winchester	IL	62694	Colin Kuchy	217-742-4025

Account Name	Address	City	State	Zip	Contact	Phone Number
Russell's Cycle	10 Valley Forge Plaza	Washington	IL	61571	Joe Russell	309-444-2098
Sammys Bikes - St. Charles	602 S First St	St. Charles	IL	60174	Elijah Rotramel	630-444-0690
Specialized Chicago Fulton Market	925 W Lake St	Chicago	IL	60607	Store Manager	312-254-2852
Specialized Lincoln Park	2104 N Halsted St	Chicago	IL	60614	Eben Saling	412-225-5382
Spokes	1807 S Washington #112	Naperville	IL	60565	Basil Radi	630-961-8222
Spokes - Wheaton	69 DANADA EAST SHOPPING CENTER	WHEATON	IL	60189	Chris Wilson	630-690-2050
Staples #0365	900 Commerce Place	Forsyth	IL	62535	Store Manager	217-875-9951
Staples #0367	2005 N Prospect Ave	Champaign	IL	61822	Store Manager	217-373-8490
Staples #0729	3100 BRdway St	Quincy	IL	62301	Store Manager	217-223-6099
Staples #0764	4350 Mahoney Dr	Peru	IL	61354	Store Manager	815-224-8650
Staples #0924	3507 Ct St	Pekin	IL	61554	Store Manager	309-347-2664
Staples #1617	4610 N Clark St	Chicago	IL	60640	Store Manager	773-769-0536
Staples #1630	610 Meacham Rd	Elk Grove Village	IL	60007	Store Manager	847-891-1086
Staples #1633	1552 S Route 59	Naperville	IL	60564	Store Manager	630-305-0253
Staples #1661	1931 Skokie Valley Rd	Highland Park	IL	60035	Store Manager	847-681-0029
Staples #1767	7199 S Kingery Hwy	Willowbrook	IL	60527	Store Manager	630-920-0506
Staples #1788	7000 W Forest Preserve Dr	Norridge	IL	60706	Store Manager	708-457-8438
Staples #1895	539 Roosevelt Rd	Glen Ellyn	IL	60137	Store Manager	630-790-0989
Tailwind Cycles	3259 W Lawrence Ave	Chicago	IL	60625	Ben Fietz	773-654-3419
The Bike Factory	616 Franklin Ave	Edwardsville	IL	62025	Alec Macdonald	618-659-8706

Account Name	Address	City	State	Zip	Contact	Phone Number
The Bike Rack STCIL	2930 Campton Hills Rd	St. Charles	IL	60175	Dane Honeyman	630-584-6588
The Cyclery and Fitness Center Edwardsville	2472 Troy Rd	Edwardsville	IL	62025	Matt Dawson	618-692-0070
The Home Depot	20808 S Cicero Ave	Matteson	IL	60443	Asm	708-481-1551
The Home Depot	17845 Halsted St	Homewood	IL	60430	Store Manager	708-647-6084
The Home Depot	6625 Grand Ave	Gurnee	IL	60031	Store Manager	847-599-0180
The Home Depot	493 N Milwaukee Ave	Vernon Hills	IL	60061	Brian Caputo	847-549-0110
The Home Depot	2500 Troy Rd	Edwardsville	IL	62025	Manager Assistant	618-659-3682
The Home Depot	2920 Audrey Ave	Naperville	IL	60540	Store Manager	630-637-9200
The Home Depot	1250 N Orchard Rd	Aurora	IL	60506	Store Manager	630-907-1480
The Home Depot	955 N Randall Rd	Elgin	IL	60123	Store Manager	847-622-9441
The Home Depot	200 S Randall Rd	Algonquin	IL	60102	Store Manager	847-854-1100
The Home Depot	8650 W Dempster St	Niles	IL	60714	Mike Power	847-298-7547
The Home Depot	4447 US Highway 14	Crystal Lake	IL	60014	Jason Vasconez	815-479-1030
The Home Depot	300 Commons Dr	Chicago Ridge	IL	60415	Bee Fortier	708-952-4909
The Home Depot	37 W North Ave	Northlake	IL	60164	Store Manager	708-409-0222
The Home Depot	2803 S Cicero Ave	Cicero	IL	60804	Store Manager	708-863-9600
The Home Depot	621 Brook Forest Ave	Shorewood	IL	60404	Store Manager	815-725-6301
The Home Depot	1300 S Clinton St	Chicago	IL	60607	Store Manager	312-850-4836
The Home Depot	20101 S la Grange Rd	Frankfort	IL	60423	Store Manager	815-464-9107
The Home Depot	735 Edward Ln	Yorkville	IL	60560	Store Manager	630-882-8159
The Home Depot	2050 N IL Route 83	Round Lake Beach	IL	60073	Store Manager	847-223-0336

Account Name	Address	City	State	Zip	Contact	Phone Number
The Home Depot	1580 W Lane Rd	Machesney Park	IL	61115	Stefanie Lenz	815-282-8234
The Home Depot	655 Lake Cook Rd	Deerfield	IL	60015	Tom Friedl	847-564-8601
The Home Depot	3001 Plainfield Rd	Joliet	IL	60435	Store Manager	815-577-9854
The Home Depot	105 N Weber Rd	Bolingbrook	IL	60490	Trish Glass	630-771-1109
The Home Depot	2461 N Richmond Rd	McHenry	IL	60051	Store Manager	815-385-9503
The Home Depot	3080 US Highway 34	Oswego	IL	60543	Store Manager	630-554-7092
The Home Depot	1710 Homer M Adams Pkwy	Alton	IL	62002	Store Manager	618-465-5803
The Home Depot	1601 W Morton Ave	Jacksonville	IL	62650	Store Manager	217-243-6051
The Home Depot	3200 W State Route 60	Mundelein	IL	60060	Store Manager	847-566-6532
The Home Depot	825 E Dundee Rd	PALATINE	IL	60074	Store Manager	847-705-6801
The Home Depot	295 E Army Trail Rd	Glendale Heights	IL	60139	Joyce	630-980-8330
The Home Depot	795 Veterans Pkwy	Normal	IL	61761	Bob Otto	309-452-4031
The Home Depot	6930 Argus Dr	Rockford	IL	61107	Store Manager	815-391-8880
The Home Depot	5501 Belleville Crossing St	Belleville	IL	62226	Store Manager	618-239-3351
The Home Depot	2111 S Randall Rd	Geneva	IL	60134	Tom	630-262-0380
The Home Depot	1550 Torrence Ave	Calumet City	IL	60409	Store Manager	708-730-9100
The Home Depot	2731 Hartigan Rd	Ingleside	IL	60041	Store Manager	847-973-8196
The Home Depot	2570 N Elston Ave	Chicago	IL	60647	Eileen	773-289-4615
The Home Depot	4242 Venture Dr	Peru	IL	61354	Store Manager	815-224-2968
The Home Depot	1919 N Cicero Ave	Chicago	IL	60639	Special Dept	773-622-8860
The Home Depot	2665 N Halsted St	Chicago	IL	60614	Store Manager	773-472-7740
The Home Depot	3500 N Kimball Ave	Chicago	IL	60618	Store Manager	773-463-6306
The Home Depot	2850 Patriot Blvd	Glenview	IL	60026	Store Manager	847-400-5390
The Home Depot	14053 S Bell Rd	Homer Glen	IL	60491	Store Manager	708-645-2635

Account Name	Address	City	State	Zip	Contact	Phone Number
The Home Depot	1301 Fort Worth Way	Mattoon	IL	61938	Shelby Eaton	217-235-0700
The Home Depot	17W734 22nd St	Oakbrook Terrace	IL	60181	Store Manager	630-261-1240
The Home Depot	4060 W 95th St	Oak Lawn	IL	60453	Store Manager	708-423-3126
The Home Depot	5026 W Holiday Dr	Peoria	IL	61615	Store Manager	309-693-3918
The Home Depot	700 BRdview Village Sq	Broadview	IL	60155	Nicolette Ful	708-865-9900
The Home Depot	1706 W US Highway 50	Ofallon	IL	62269	Store Manager	618-632-9692
The Home Depot	7300 W 159th St	Orland Park	IL	60462	Specialist Order	708-614-9200
The Home Depot	7200 S Cicero Ave	Chicago	IL	60629	Store Manager	708-728-9200
The Home Depot	1232 W North Ave	Chicago	IL	60642	Store Manager	773-486-9200
The Home Depot	950 S IL Route 59	Bartlett	IL	60103	Store Manager	630-289-6247
The Home Depot	7200 Woodward Ave	Woodridge	IL	60517	Store Manager	630-795-1950
The Home Depot	100 Barrington Rd	Schaumburg	IL	60194	Tallat Khan	847-798-8700
The Home Depot	2000 Butterfield Rd	Downers Grove	IL	60515	Receiving Dept.	630-792-9600
The Home Depot	5432 BRdway St	Quincy	IL	62305	Store Manager	217-228-2475
The Home Depot	3200 Banterra Dr	Marion	IL	62959	Jason Smith	618-997-7100
The Home Depot	2101 75th St	Darien	IL	60561	Pat Spencer	630-271-9600
The Home Depot	350 E Kensington Rd	Mount Prospect	IL	60056	Store Manager	847-342-1800
The Home Depot	670 S Rand Rd	Lake Zurich	IL	60047	Store Manager	847-726-0707
The Home Depot	251 Springhill Rd	Carpentersville	IL	60110	Cathy	847-783-0766
The Home Depot	820 Bloomington Rd	Champaign	IL	61820	Store Manager	217-356-2629
The Home Depot	440 Randall Rd	South Elgin	IL	60177	Store Manager	847-214-8718
The Home Depot	1049 Collinsville Crossing Blvd	Collinsville	IL	62234	Becky Dailey	618-344-9022
The Home Depot	200 W 87th St	Chicago	IL	60620	Store Manager	773-602-1301

Account Name	Address	City	State	Zip	Contact	Phone Number
The Home Depot	475 S Schmale Rd	Carol Stream	IL	60188	Store Manager	630-462-8607
The Home Depot	140 Countryside Plz	Countryside	IL	60525	Kathryn Crean	708-352-1550
The Home Depot	2555 N Normandy Ave	Chicago	IL	60707	Store Manager	773-745-9900
The Home Depot	2001 Belvidere Rd	Waukegan	IL	60085	Store Manager	847-625-1020
The Wheel Thing	417 N LAGRANGE RD	LA GRANGE PARK	IL	60526	KEVIN STEPHENS	708-352-3822
Trek Bicycle Downers Grove Illinois	639 Ogden Ave	Downers Grove	IL	60515	Ken Frigo	630-971-8877
Trek Bicycle Villa Park	240 W St Charles Rd	Villa Park	IL	60181	Kirk Schimpf	630-620-1606
Trek Store of Highland Park	1925 SKOKIE VALLEY RD	Highland Park	IL	60035	Torsten Eckstein	847-433-8735
uBreakiFix	2511 W Schaumburg Rd	Schaumburg	IL	60194	Alyson Lynch	815-378-3620
uBreakiFix	1219 W LANE RD	Machesney Park	IL	61115	Store Manager	779-774-9103
uBreakiFix	1240 South Canal St	Chicago	IL	60607	Store Manager	312-226-9007
uBreakiFix	15845 South Harlem Ave	Orland Park	IL	60462	Store Manager	708-400-8021
uBreakiFix	3176 N Clark St	Chicago	IL	60657	Store Manager	773-880-2181
uBreakiFix	1316 S Milwaukee Ave	Libertyville	IL	60048	Vitaliy Trofymchuk	847-918-0209
uBreakiFix	72 South La Grange Rd	La Grange	IL	60525	Store Manager	708-603-2196
uBreakiFix	735 S Perryville Rd	Rockford	IL	61108	Store Manager Manager	815-708-7130
uBreakiFix	11235 W Lincoln Hwy	Mokena	IL	60448	Store Manager	779-324-5689
uBreakiFix	13511 S Route 59	Plainfield	IL	60544	Store Manager	815-782-8284
uBreakiFix	4555 211th St	Matteson	IL	60443	Store Manager	708-515-9951
uBreakiFix	5126 W 95th St	Oak Lawn	IL	60453	Store Manager	708-907-5438

Account Name	Address	City	State	Zip	Contact	Phone Number
Village CycleSport Barrington	234 West Northwest Highway	Barrington	IL	60010	Mike Page	847-382-9200
Village of Arlington Heights	33 S Arlington Heights Rd	Arlington Heights	IL	60005	Terese Biskner	847-368-5760
Village Pedaler Acquisition	1954 gyorr ave	South Elgin	IL	60177	James Russell	630-363-8810
Vitesse Cycle Shop	206 South Linden St	Normal	IL	61761	Chris Koos	309-454-1541
Wheel & Sprocket - Evanston	1027 Davis St	Evanston	IL	60201	Gretchen Brauer	847-864-7660
Wheel & Sprocket - Oak Park	1118 Westgate St	Oak Park	IL	60301	David Fletcher	708-665-1100
Wheel & Sprocket - Park Ridge	672 N Northwest Highway	Park Ridge	IL	60068	Kim Pandy	847-250-2200
Wheel Fast Bicycle Company	17 Cottonwood Dr	Chatham	IL	62629	Jeremy Eisenhauer	217-483-7807
Whitmore Ace Hardware	221 Bedford Rd	Morris	IL	60450	Adam Glerup	815-942-6240

APPENDIX F – CALL2RECYCLE LOCATOR

Find a drop-off location near you

Check the battery recycling laws in your area

Find a drop-off location near you

60561

Search

Check the battery recycling laws in your area

Select what you would you like to recycle.

☒ Rechargeable Batteries
(Excluding E-Bike And High Energy Batteries)

☐ Single-Use (primary) Batteries
Why Single-Use Batteries Are Different

☐ E-Bike Batteries
Accepted E-Bike Battery Brands

☐ Cellphones

☐ High Energy Batteries
Participating Brands Only

Darien, IL
The Home Depot
2101 75th St
Darien, IL 60561-4383
(630) 271-9600

Get Directions

About this Location

Accepts

Rechargeable Batteries

Westmont, IL
Amazon - Westmont
30 W 63rd St
Westmont, IL 60559

Get Directions

About this Location

Accepts

Rechargeable Batteries

Cellphones

Willowbrook, IL
Staples #1767
7199 S Kingery Hwy
Willowbrook, IL 60527-5525
(630) 920-0506

Get Directions

About this Location

Accepts

Rechargeable Batteries

Cellphones

Single-Use Batteries

Woodridge, IL
The Home Depot
7200 Woodward Ave

Get Directions

Mapping Locator Powered by **SOQI** Copyright © 2025, All Rights Reserved.

Map data ©2025 Google

©2025 Call2Recycle, Inc. | All Rights Reserved

63