

# EJScreen Community Report

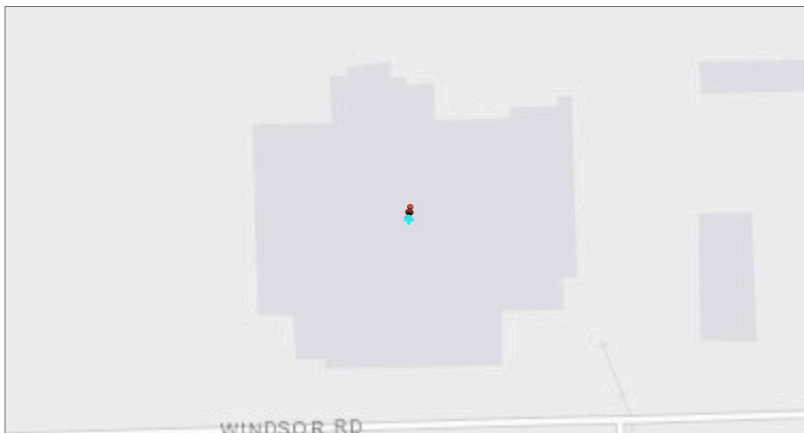
This report provides environmental and socioeconomic information for user-defined areas, and combines that data into environmental justice and supplemental indexes.

## Loves Park, IL

1 mile Ring Centered at 42.326844,-89.040301

Population: 8,960

Area in square miles: 3.14



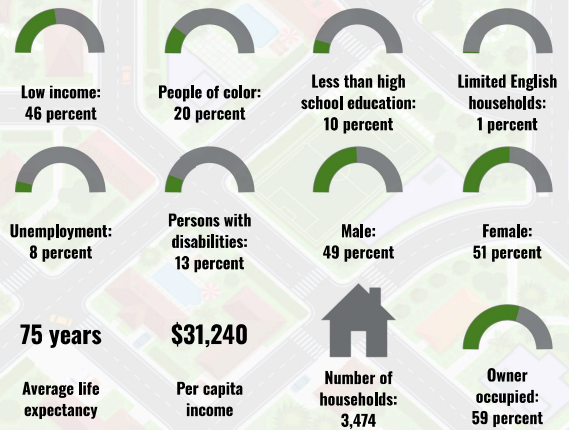
September 17, 2024

Project 1  
Search Result (point)

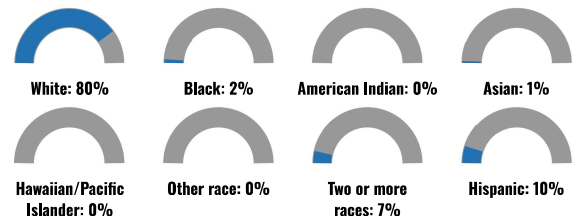
1:2,257  
0 0.02 0.04 0.08 mi  
0 0.03 0.07 0.13 km

Env. HEERL, Garmin, US OpenStreetMap contributors, and the GIS user community. Env. HEERL, Garmin, GeoTechnologies Inc., USGS, Esri.

### COMMUNITY INFORMATION



### BREAKDOWN BY RACE



### BREAKDOWN BY AGE



### LIMITED ENGLISH SPEAKING BREAKDOWN



Notes: Numbers may not sum to totals due to rounding. Hispanic population can be of any race. Source: U.S. Census Bureau, American Community Survey (ACS) 2018-2022. Life expectancy data comes from the Centers for Disease Control.

### LANGUAGES SPOKEN AT HOME

LANGUAGE	PERCENT
English	93%
Spanish	4%
Russian, Polish, or Other Slavic	2%
Other Indo-European	1%
Total Non-English	7%

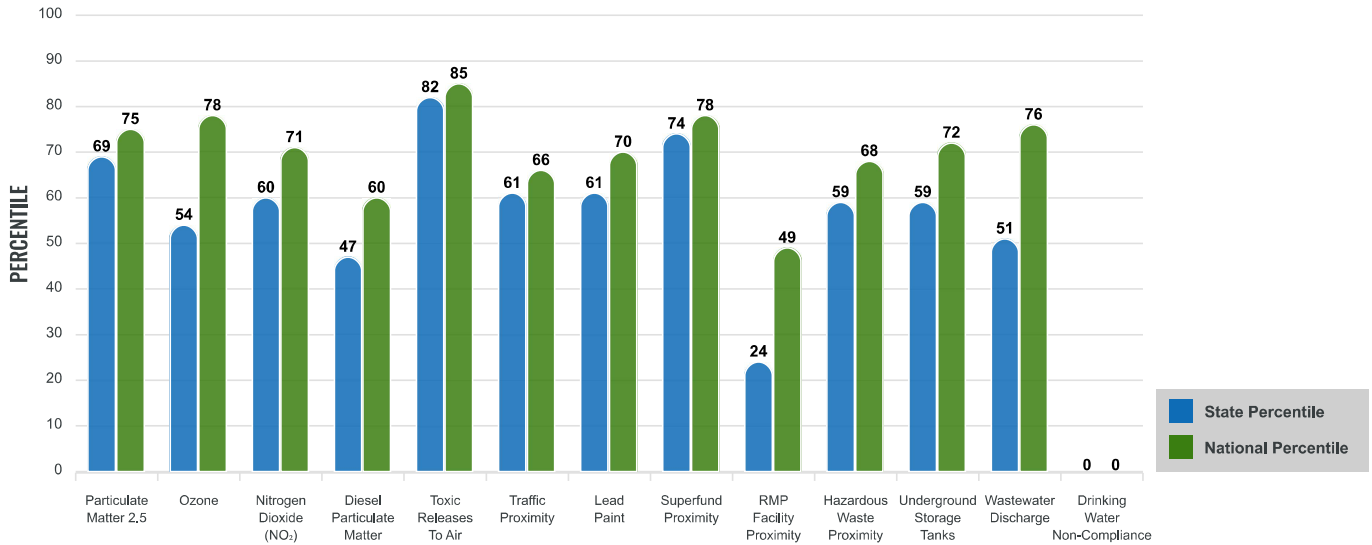
# Environmental Justice & Supplemental Indexes

The environmental justice and supplemental indexes are a combination of environmental and socioeconomic information. There are thirteen EJ indexes and supplemental indexes in EJScreen reflecting the 13 environmental indicators. The indexes for a selected area are compared to those for all other locations in the state or nation. For more information and calculation details on the EJ and supplemental indexes, please visit the [EJScreen website](#).

## EJ INDEXES

The EJ indexes help users screen for potential EJ concerns. To do this, the EJ index combines data on low income and people of color populations with a single environmental indicator.

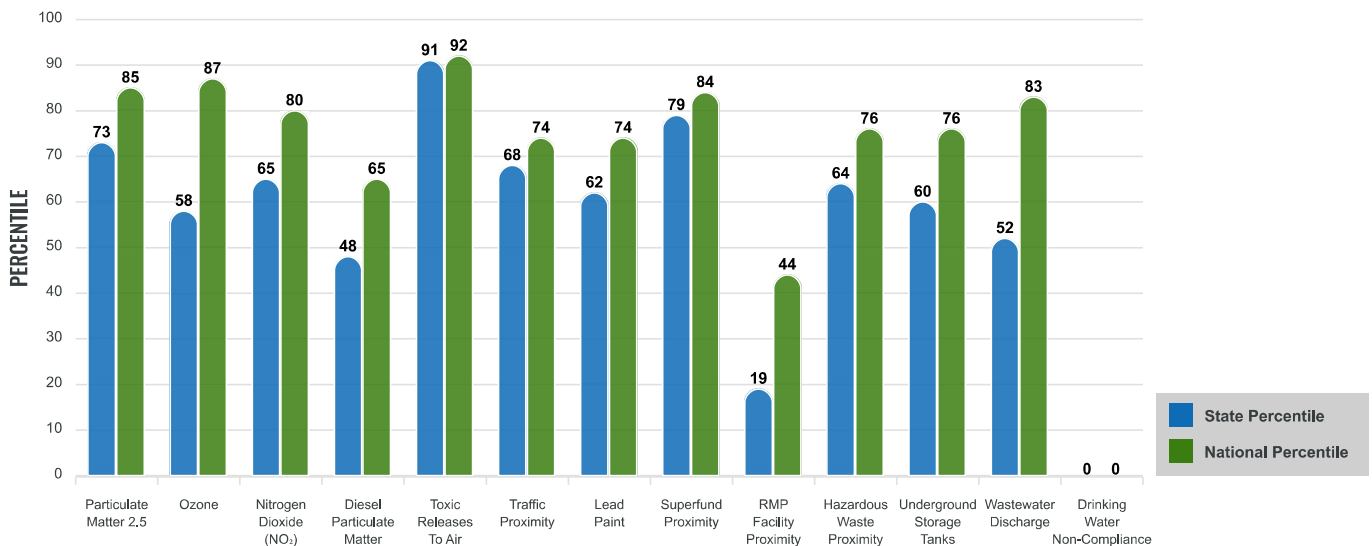
### EJ INDEXES FOR THE SELECTED LOCATION



## SUPPLEMENTAL INDEXES

The supplemental indexes offer a different perspective on community-level vulnerability. They combine data on percent low income, percent persons with disabilities, percent less than high school education, percent limited English speaking, and percent low life expectancy with a single environmental indicator.

### SUPPLEMENTAL INDEXES FOR THE SELECTED LOCATION



Report for 1 mile Ring Centered at 42.326844,-89.040301

Report produced September 17, 2024 using EJScreen Version 2.3

# EJScreen Environmental and Socioeconomic Indicators Data

SELECTED VARIABLES	VALUE	STATE AVERAGE	PERCENTILE IN STATE	USA AVERAGE	PERCENTILE IN USA
<b>ENVIRONMENTAL BURDEN INDICATORS</b>					
Particulate Matter 2.5 ( $\mu\text{g}/\text{m}^3$ )	9.11	8.96	57	8.45	77
Ozone (ppb)	67.3	69.3	35	61.8	79
Nitrogen Dioxide (NO <sub>2</sub> ) (ppbv)	9.6	10	46	7.8	71
Diesel Particulate Matter ( $\mu\text{g}/\text{m}^3$ )	0.15	0.245	29	0.191	47
Toxic Releases to Air (toxicity-weighted concentration)	51,000	6,000	99	4,600	98
Traffic Proximity (daily traffic count/distance to road)	1,200,000	2,000,000	50	1,700,000	59
Lead Paint (% Pre-1960 Housing)	0.4	0.43	46	0.3	66
Superfund Proximity (site count/km distance)	0.24	0.44	67	0.39	73
RMP Facility Proximity (facility count/km distance)	0.099	1.1	11	0.57	32
Hazardous Waste Proximity (facility count/km distance)	2.3	3.5	46	3.5	62
Underground Storage Tanks (count/km <sup>2</sup> )	3.1	8	46	3.6	70
Wastewater Discharge (toxicity-weighted concentration/m distance)	5800	31000	41	700000	86
Drinking Water Non-Compliance (points)	0	0.37	0	2.2	0
<b>SOCIOECONOMIC INDICATORS</b>					
Demographic Index USA	1.39	N/A	N/A	1.34	59
Supplemental Demographic Index USA	1.9	N/A	N/A	1.64	69
Demographic Index State	1.44	1.32	63	N/A	N/A
Supplemental Demographic Index State	1.74	1.41	72	N/A	N/A
People of Color	20%	39%	38	40%	37
Low Income	46%	28%	80	30%	77
Unemployment Rate	7%	6%	68	6%	71
Limited English Speaking Households	1%	4%	59	5%	60
Less Than High School Education	10%	10%	62	11%	58
Under Age 5	9%	6%	84	5%	84
Over Age 64	15%	17%	48	18%	47

\*Diesel particulate matter index is from the EPA's Air Toxics Data Update, which is the Agency's ongoing, comprehensive evaluation of air toxics in the United States. This effort aims to prioritize air toxics, emission sources, and locations of interest for further study. It is important to remember that the air toxics data presented here provide broad estimates of health risks over geographic areas of the country, not definitive risks to specific individuals or locations. More information on the Air Toxics Data Update can be found at: <https://www.epa.gov/haps/air-toxics-data-update>.

## Sites reporting to EPA within defined area:

Superfund .....	0
Hazardous Waste, Treatment, Storage, and Disposal Facilities .....	0
Water Dischargers .....	15
Air Pollution .....	36
Brownfields .....	4
Toxic Release Inventory .....	9

## Other community features within defined area:

Schools .....	7
Hospitals .....	0
Places of Worship .....	10

## Other environmental data:

Air Non-attainment .....	No
Impaired Waters .....	Yes

Selected location contains American Indian Reservation Lands* .....	No
Selected location contains a "Justice40 (CEJST)" disadvantaged community .....	Yes
Selected location contains an EPA IRA disadvantaged community .....	Yes

Report for 1 mile Ring Centered at 42.326844,-89.040301

Report produced September 17, 2024 using EJScreen Version 2.3

# EJScreen Environmental and Socioeconomic Indicators Data

## HEALTH INDICATORS

INDICATOR	VALUE	STATE AVERAGE	STATE PERCENTILE	US AVERAGE	US PERCENTILE
Low Life Expectancy	24%	20%	86	20%	87
Heart Disease	6.6	5.5	76	5.8	70
Asthma	10.5	9.9	75	10.3	58
Cancer	7.1	6.4	64	6.4	65
Persons with Disabilities	12.8%	12.4%	57	13.7%	50

## CLIMATE INDICATORS

INDICATOR	VALUE	STATE AVERAGE	STATE PERCENTILE	US AVERAGE	US PERCENTILE
Flood Risk	7%	11%	52	12%	54
Wildfire Risk	0%	0%	0	14%	0

## CRITICAL SERVICE GAPS

INDICATOR	VALUE	STATE AVERAGE	STATE PERCENTILE	US AVERAGE	US PERCENTILE
Broadband Internet	15%	13%	65	13%	66
Lack of Health Insurance	8%	7%	67	9%	58
Housing Burden	No	N/A	N/A	N/A	N/A
Transportation Access Burden	Yes	N/A	N/A	N/A	N/A
Food Desert	Yes	N/A	N/A	N/A	N/A

Report for 1 mile Ring Centered at 42.326844,-89.040301

Report produced September 17, 2024 using EJScreen Version 2.3