



Illinois Environmental Protection Agency

Stage 2 Data Report

March 2007



Final Report

THIS PAGE INTENTIONALLY LEFT BLANK

Contents

Section 1 Introduction

Section 2 Field Activities

2.1	Instream Field Parameters.....	2-1
2.2	Grab Samples.....	2-2
2.3	Continuous Monitoring.....	2-2

Section 3 Quality Assurance Review

3.1	Deviations from Original Sampling Plan (QAPP).....	3-1
3.2	Data Verification and Validation.....	3-1
3.3	Data Quality Objectives.....	3-2

Section 4 Conclusions

Appendices (see attached CD)

<i>Appendix A</i>	<i>Sampling Location Photographs</i>
<i>Appendix B</i>	<i>Stream Flow Data</i>
<i>Appendix C</i>	<i>Analytical Data</i>
<i>Appendix D</i>	<i>Continuous Monitoring Data and Charts</i>
<i>Appendix E</i>	<i>QAPP</i>

THIS PAGE INTENTIONALLY LEFT BLANK

Figures

- 2-1 Stage 2 Sampling Locations Bay Creek Watershed
- 2-2 Stage 2 Sampling Locations Cahokia Creek/Holiday Shores Watershed
- 2-3 Stage 2 Sampling Locations Cedar Creek – Cedar Lake Watershed
- 2-4 Stage 2 Sampling Locations Crab Orchard Creek Watershed
- 2-5 Stage 2 Sampling Locations Crooked Creek Watershed
- 2-6 Stage 2 Sampling Locations Little Wabash River Watershed
- 2-7 Stage 2 Sampling Locations Marys River – North Fork Cox Creek Watershed
- 2-8 Stage 2 Sampling Locations Sangamon River/Decatur Lake Watershed
- 2-9 Stage 2 Sampling Locations Shoal Creek Watershed
- 2-10 Stage 2 Sampling Locations South Fork Saline River – Lake of Egypt Watershed
- 2-11 Stage 2 Sampling Locations South Fork Sangamon River – Lake Taylorville Watershed

THIS PAGE INTENTIONALLY LEFT BLANK

Tables

2-1	Stage 2 Data Collection Field Dates
2-2	Field Parameter
2-3	Data Collected for Causes of Impairment
3-1	Duplicate Pair Sample Results
4-1	Impairment Status

THIS PAGE INTENTIONALL LEFT BLANK

Section 1

Introduction

The Illinois Environmental Protection Agency (Illinois EPA) has a three-stage approach to total maximum daily load (TMDL) development. The stages are:

Stage 1 – Watershed Characterization, Data Analysis, Methodology Selection

Stage 2 – Data Collection (optional)

Stage 3 – Model Calibration, TMDL Scenarios, Implementation Plan

This report addresses data collection associated with Stage 2 TMDL development for the following watersheds:

- Bay Creek
- Cahokia Creek/Holiday Shores Lake
- Cedar Creek/Cedar Lake
- Crab Orchard Creek/Crab Orchard Lake
- Crooked Creek
- Little Wabash River
- Mary's River/North Fork Cox Creek
- Sangamon River/Lake Decatur
- Shoal Creek
- South Fork Saline River/Lake of Egypt
- South Fork Sangamon River/Lake Taylorville

Sampling has been completed based on the recommendations presented in Section 6 of each watershed's Stage 1 TMDL report and the sampling plan described within the quality assurance project plan (QAPP). The Stage 2 data will supplement existing data collected and assessed as part of Stage 1 of TMDL development and will support the development of TMDLs under Stage 3 of the process. Where adequate supporting data exist, data collected during Stage 2 activities may also be used to support the delisting of certain parameters from the state 303(d) list.

The remaining sections of this report contain:

- **Section 2 Field Activities** includes information on sampling locations as well as field parameter, grab sample and continuous monitoring data
- **Section 3 Quality Assurance Review** discusses changes in the sampling plan from the original QAPP, data verification and validity, and conformance to the data quality objectives
- **Section 4 Conclusions** summarizes the Stage 2 work and makes recommendations for moving forward

Section 2

Field Activities

TMDL streams were sampled by CDM twice during the fall of 2006 to collect data needed to support water quality modeling and TMDL development. The first round of Stage 2 data collection took place between August 28 and September 29, 2006. The second round of Stage 2 data collection took place between October 16 and November 17, 2006. In addition, three segments within the Little Wabash River watershed were sampled by Illinois EPA between April and August of 2006. Over the course the sampling project, 32 streams (out of a possible 33) and one lake were sampled within the eleven Stage 2 watersheds. Table 2-1 contains data collection dates for each watershed.

Table 2-1: Stage 2 Data Collection Field Dates

Watershed	First Round Dates (2006)	Second Round Dates (2006)
Bay Creek	9/25-9/29	10/30-11/6
Cahokia Creek/Holiday Shores Lake	8/28-9/6	10/16-10/20
Cedar Lake	9/5-9/14	10/30-11/6
Crab Orchard Lake	9/5-9/14	10/30-11/6
Crooked Creek	9/5-9/14	10/16-10/20
South Fork Saline River/Lake of Egypt	9/25-9/29	10/30-11/6
Little Wabash River - CDM	9/5-9/14	10/30-11/16
Little Wabash River – Illinois EPA	4/18-8/8	
Mary's River	9/5-9/14	10/16-10/20
Sangamon River/Lake Decatur	8/28-9/6	10/30-11/3
Shoal	8/28-9/6	10/16-10/20
South Fork Sangamon River/Lake Taylorville	8/28-9/6	10/30-11/3

Sampling was conducted in accordance with the QAPP by CDM personnel at stream and lake locations with sufficient water and access. When time permitted, alternate locations were investigated if water and/or access were limited at original locations. Figures 2-1 through 2-11 show sampling locations used for Stage 2 data collection for each watershed. Refer to section 3.1 for further information related to sampling location changes from the original QAPP. Appendix A contains pictures of each sampling location. The sampling and analysis activities conducted at each sampling location included:

- In-stream field parameterization
- Grab samples for laboratory analysis
- Continuous monitoring
- Stream gaging

2.1 Instream field parameters

Water quality measurements for pH, temperature, dissolved oxygen (DO), conductivity, and turbidity were taken at each accessible sampling location where water was present using an In-Situ 9500 Profiler water quality meter. In-Situ 9500 Profilers were calibrated each morning of field activity. Water quality readings were

taken at each accessible site with adequate water at the center of flow and values were recorded in field books. These values are presented in Table 2-2. Table 2-2 also contains sample location latitude and longitude as well as explanatory information as to why a limited number of sites were not sampled.

At each site with adequate and safely wadeable streamflow, flow measurements were recorded using a Marsh McBirney 2000 flow meter. Appendix B contains flow meter data and stream discharge analysis for these sites.

2.2 Grab Samples

Grab samples were collected based on the causes of impairment identified in the 303(d) list as well as data needed to support TMDL development under Stage 3. Samples collected on Owl Creek and South Fork Sangamon River were analyzed by Prairie Analytical Laboratories in Springfield, IL and all other samples collected by CDM were analyzed by ARDL, Inc in Mt. Vernon, IL. Samples were delivered in person to the laboratory or exchanged with laboratory personnel in the field. Select segments in the Little Wabash watershed (Elm River segment CD01, and Little Wabash River segments C09 and C33) were sampled by Illinois EPA and analyzed by the Illinois EPA Laboratory in Champaign, IL.

Table 2-3 contains data collected at each location associated with impairment status. Values shown in bold face with gray background violated the applicable water quality standard. All data analyzed by the laboratories are contained in Appendix C. This appendix includes the data shown in Table 2-3 as well as all other parameters that were sampled in order to support Stage 3 TMDL development. In addition, Appendix C shows data qualifiers as well as detection limits for all samples.

2.3 Continuous Monitoring

In-Situ 9500 Professional XP multi-parameter data-logging sondes were used for continuous data measurements on streams impaired by low DO and/or pH. The sondes were calibrated prior to deployment then deployed for at least 3 days at select locations with adequate water and access. DO, pH, conductivity and temperature data were recorded at 15 minute intervals during sonde deployment, after which the sonde was removed and data were downloaded to a laptop computer. The continuous data associated with impairment causes are presented in Appendix D. Because sondes were not field checked at the time of retrieval, there is a possibility that some experienced times of drying or build-up of sedimentation during deployment. A column was added to the data presented in Appendix D to estimate acceptable or “suspect” data. Data were deemed suspect when low conductivity or high temperature values indicate that the meter was likely out of the water or also at times when field log books indicated that the sonde had not yet been deployed or had been pulled from the stream. The data that were deemed acceptable were plotted on Figures D-1 through D-26. The charts are grouped by watershed and show data collected during the first and second round of sampling at each location.

Violations of the instantaneous DO standard (5.0 mg/L minimum) were not recorded during either monitoring period on the following segments that are currently listed for impairment caused by low DO:

- Cedar Creek AJF16 (Figure D-1)
- Big Muddy River N99 (Figure D-4)
- Shoal Creek OI05 (Figures D-22 and D-23)
- South Fork Saline River ATH08 (Figure D-24)

According to Table B-2 of the Illinois Integrated Water Quality Report (2006), the aquatic life use may also be impaired if DO concentrations are below 6.0 mg/L for more than 16 hours of any 24 hour period. Appendix D also contains this analysis for the segments that did not violate the instantaneous minimum standard. The number of values recorded below 6.0 mg/L during any 24 hour period were counted and if any count was above 64 (64 values equates to 16 hours worth of data), the stream was considered to be potentially impaired by low DO. The following segments did not experience a violation of either the 5.0 mg/L instantaneous standard or the 6.0 mg/L standard as described above:

- Cedar Creek AJF16 (Figure D-1)
- Shoal Creek OI05 (Figures D-22 and D-23)
- South Fork Saline River ATH08 (Figure D-24)

Violations of the pH standard (6.5 minimum, 9.0 maximum) were not recorded during either monitoring period on the following segments that are currently listed for impairment caused by pH:

- Crab Orchard Creek ND12 (Figure D-5)
- Briers Creek ATHS01 (Figure D-25)

THIS PAGE INTENTIONALLY LEFT BLANK

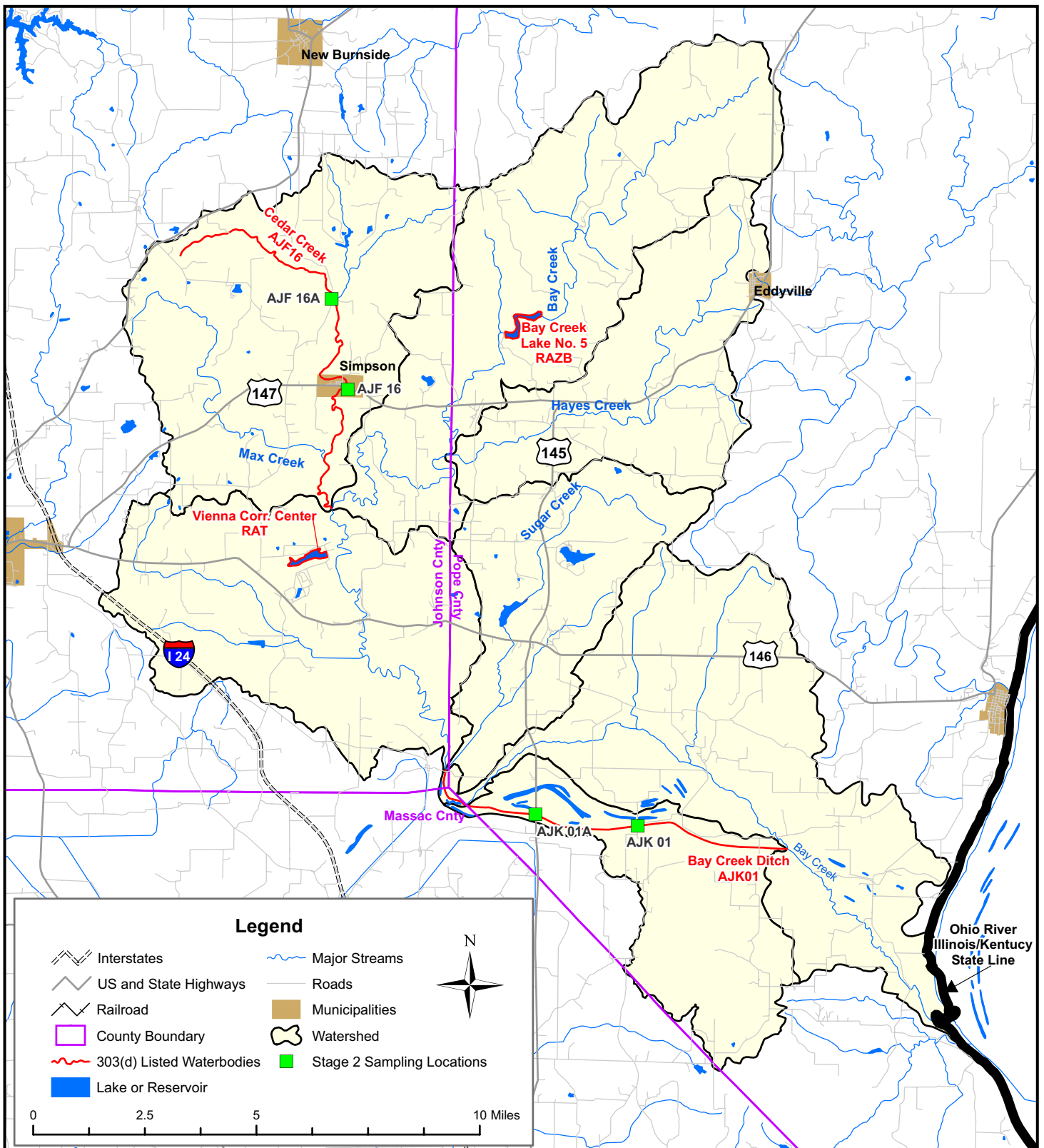


Figure 2-1
 Stage 2 Sampling Locations
 Bay Creek Watershed

DRAFT

THIS PAGE INTENTIONALLY LEFT BLANK

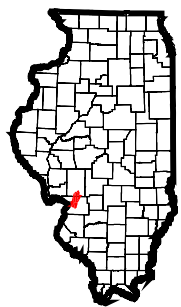
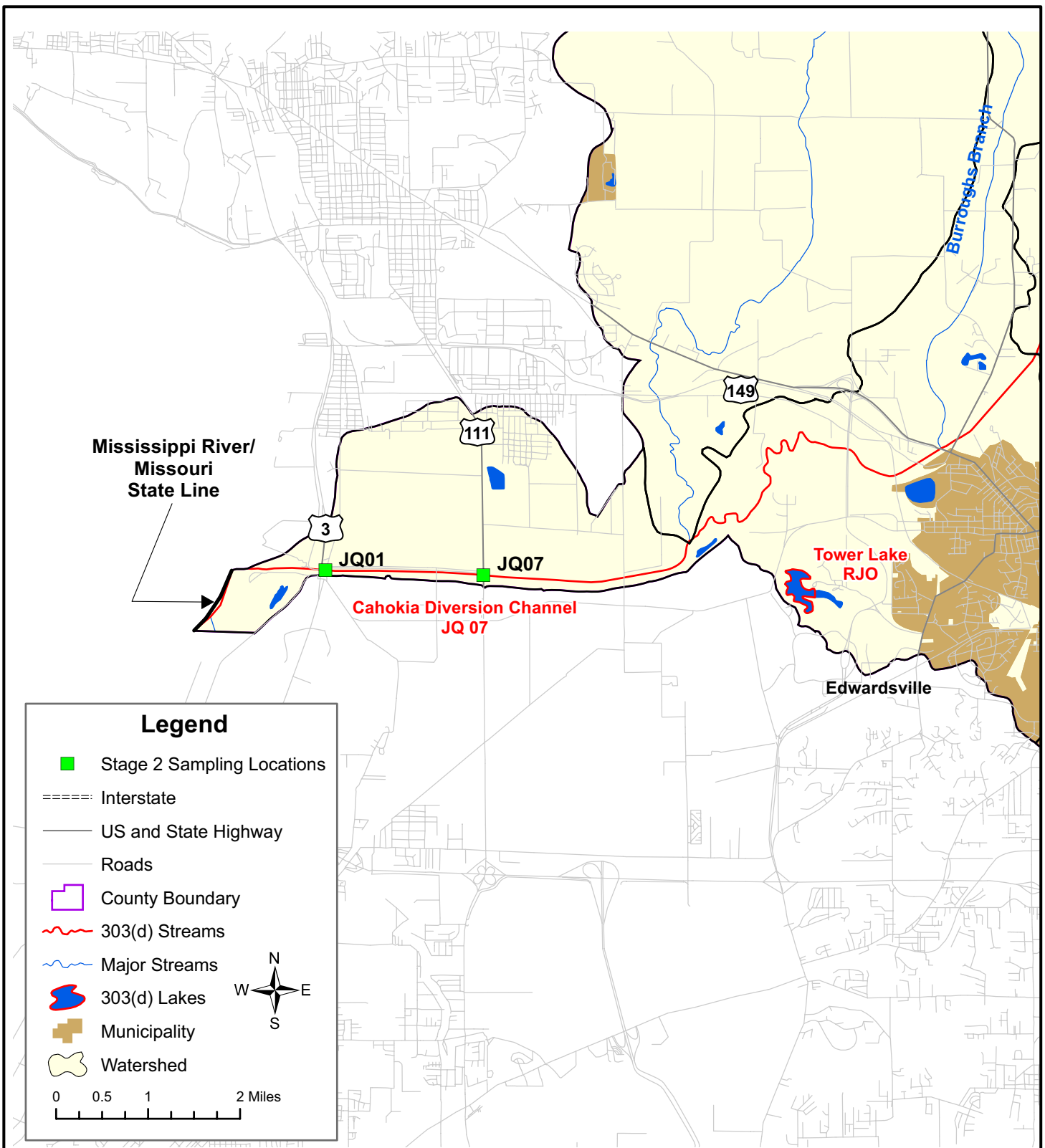


Figure 2-2:
Stage 2 Sampling Locations
Cahokia Creek/Holiday Shores Lake Watershed

DRAFT

THIS PAGE INTENTIONALLY LEFT BLANK

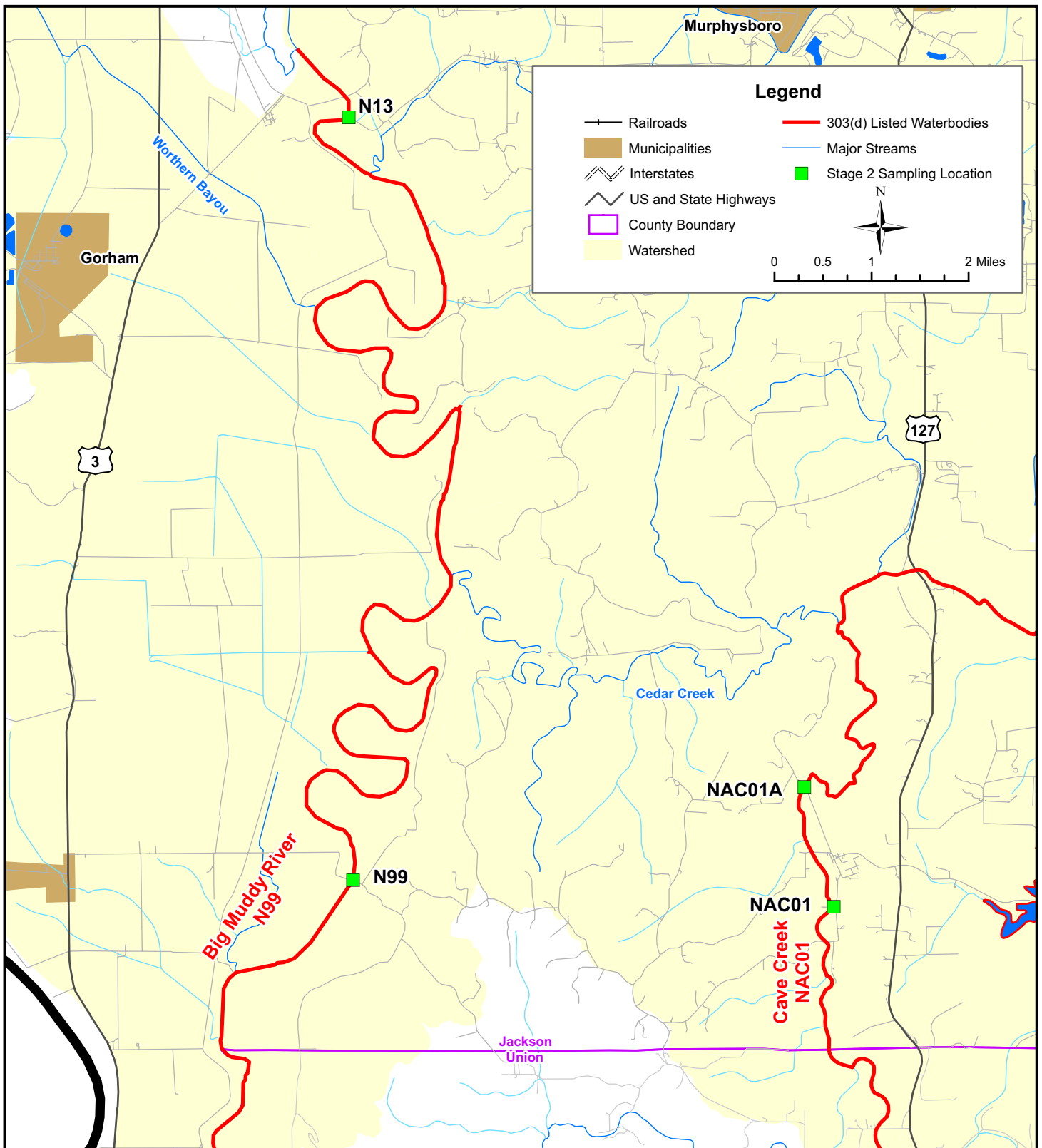


Figure 2-3
 Stage 2 Sampling Locations
 Cedar Creek - Cedar Lake Watershed

DRAFT

THIS PAGE INTENTIONALLY LEFT BLANK

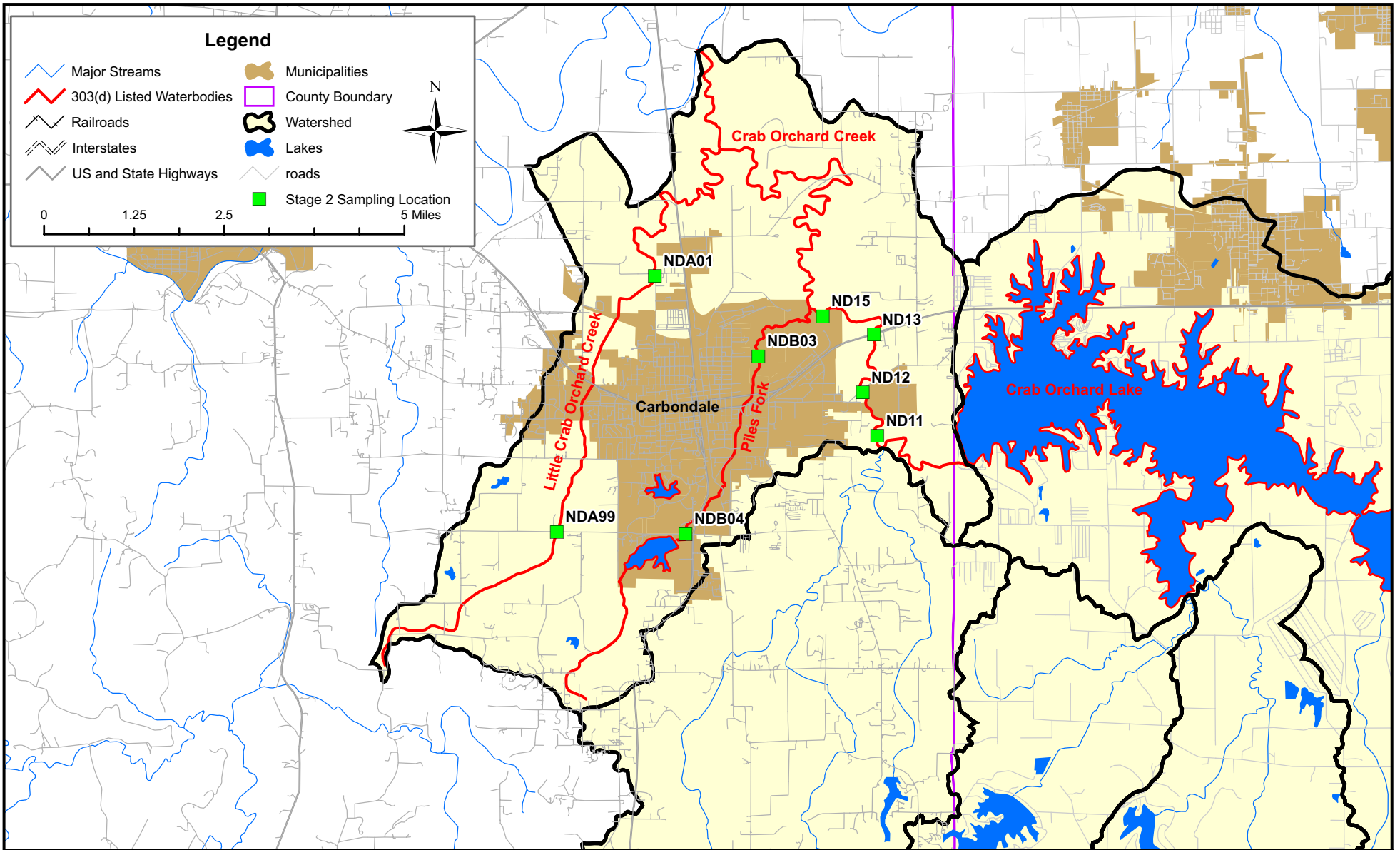


Figure 2-4:
Stage 2 Sampling Locations
Crab Orchard Creek Watershed

DRAFT

THIS PAGE INTENTIONALLY LEFT BLANK

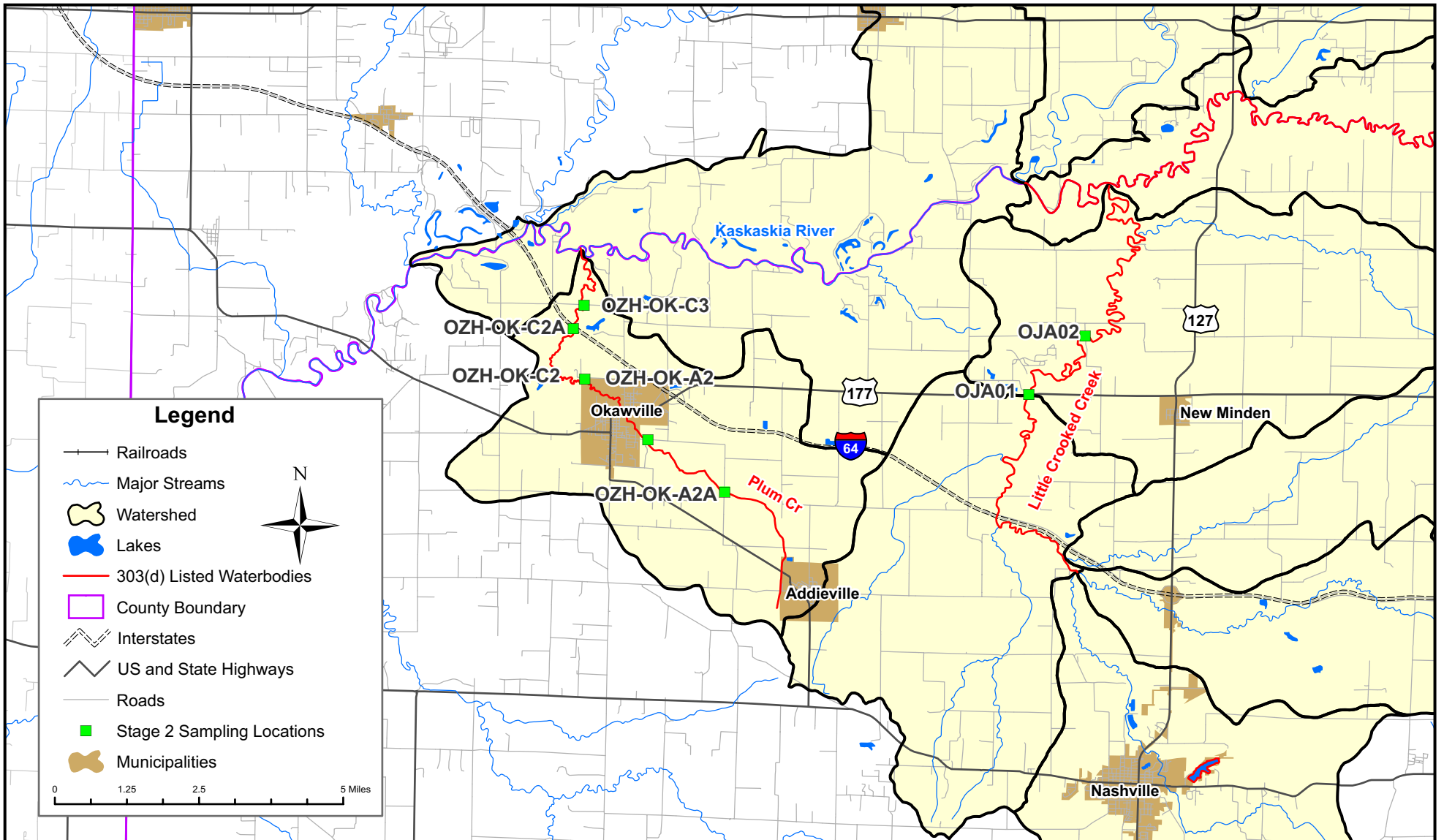


Figure 2-5
 Stage 2 Sampling Locations
 Crooked Creek Watershed

DRAFT

THIS PAGE INTENTIONALLY LEFT BLANK

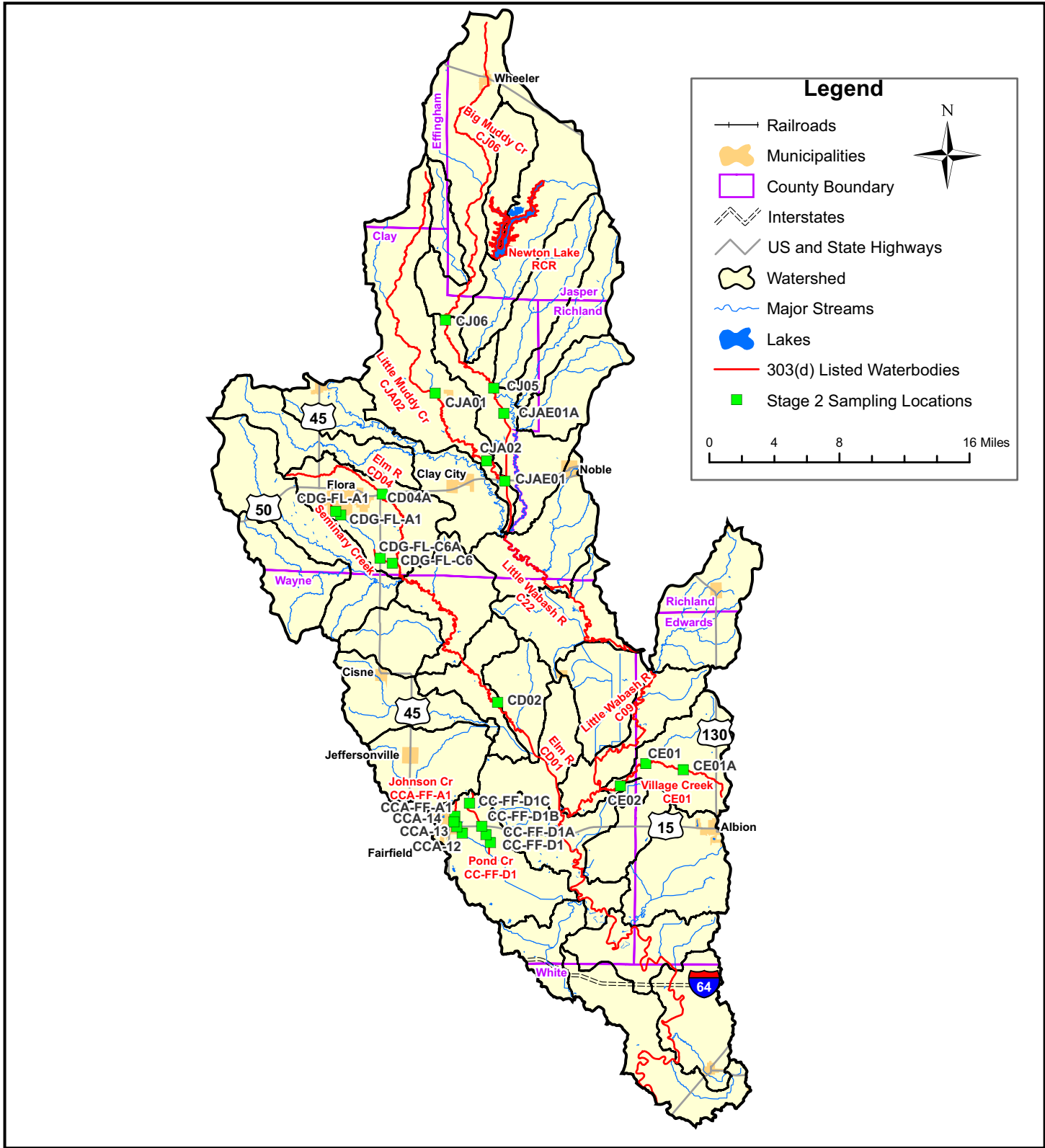


Figure 2-6:
 Stage 2 Sampling Locations
 Little Wabash River Watershed

DRAFT

THIS PAGE INTENTIONALLY LEFT BLANK

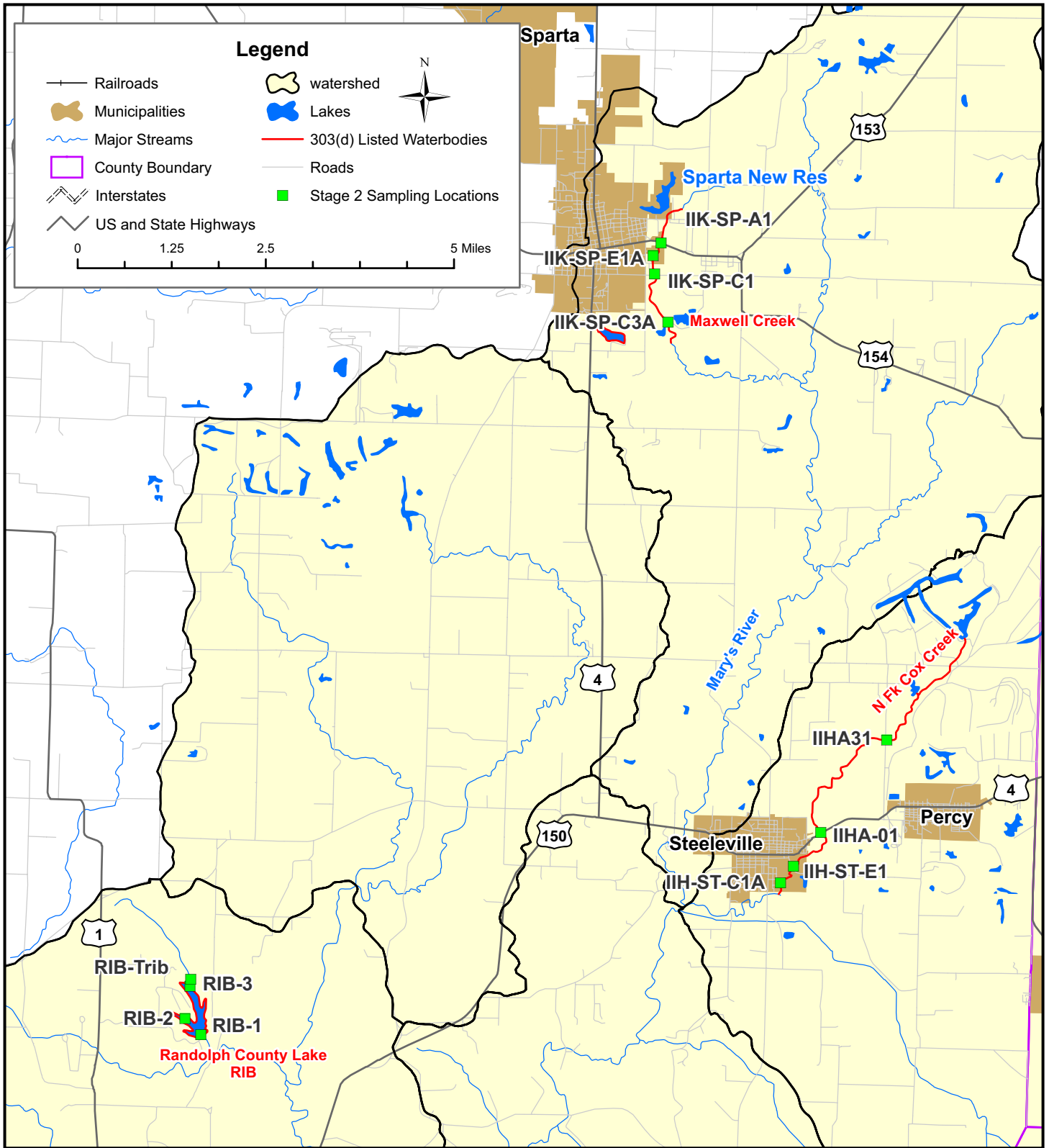


Figure 2-7:
 Stage 2 Sampling Locations
 Marys River - North Fork Cox Creek Watershed

DRAFT

THIS PAGE INTENTIONALLY LEFT BLANK

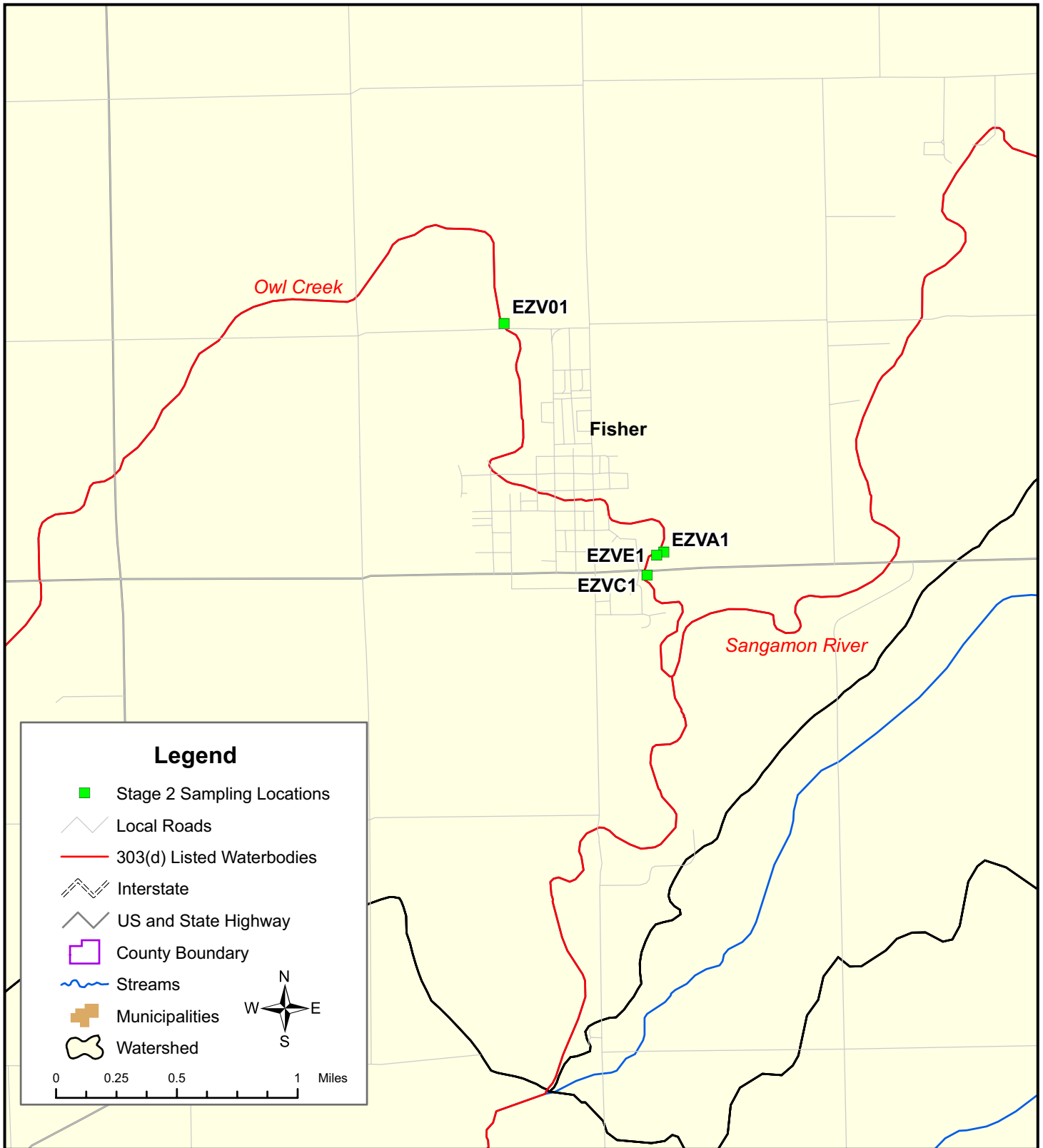


Figure 2-8:
Stage 2 Sampling Locations
Sangamon River - Lake Decatur Watershed



DRAFT

THIS PAGE INTENTIONALLY LEFT BLANK

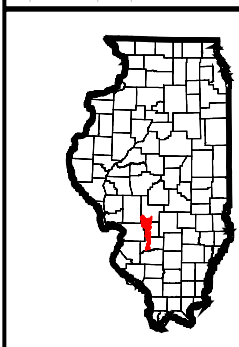
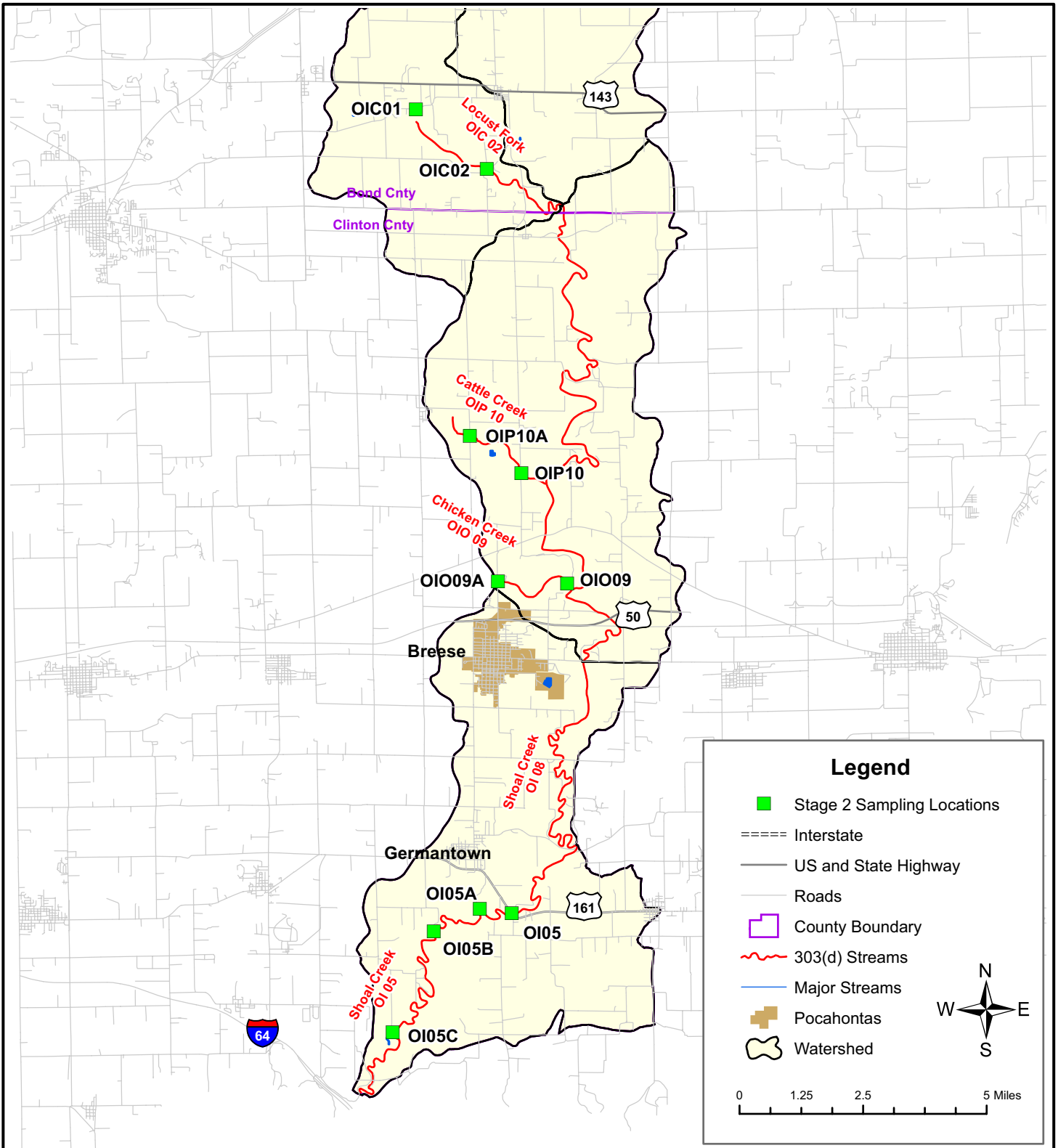


Figure 2-9:
Stage 2 Sampling Locations
Shoal Creek Watershed

DRAFT

THIS PAGE INTENTIONALLY LEFT BLANK

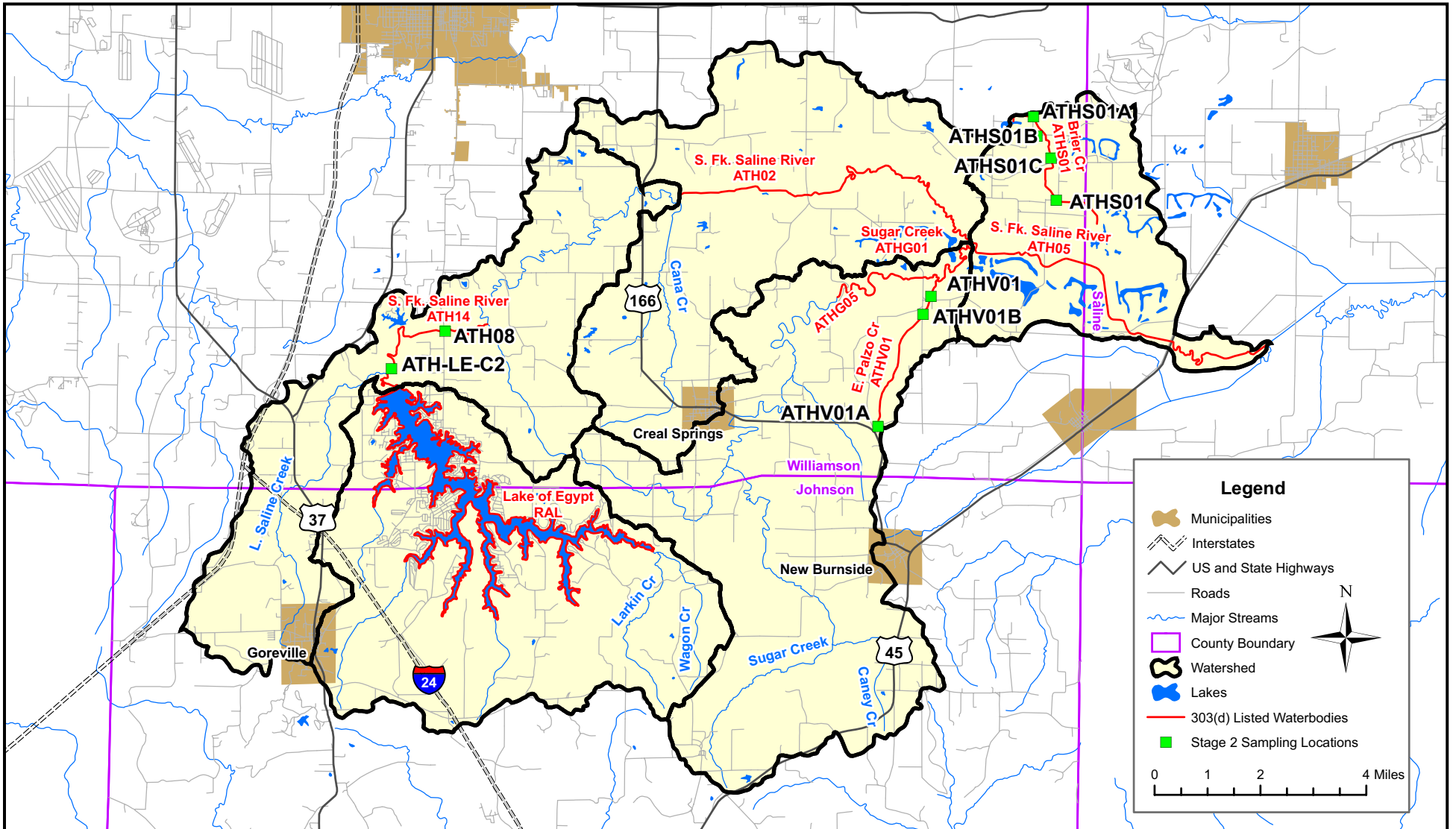


Figure 2-10
 Stage 2 Sampling Locations
 South Fork Saline River - Lake of Egypt Watershed

DRAFT

THIS PAGE INTENTIONALLY LEFT BLANK

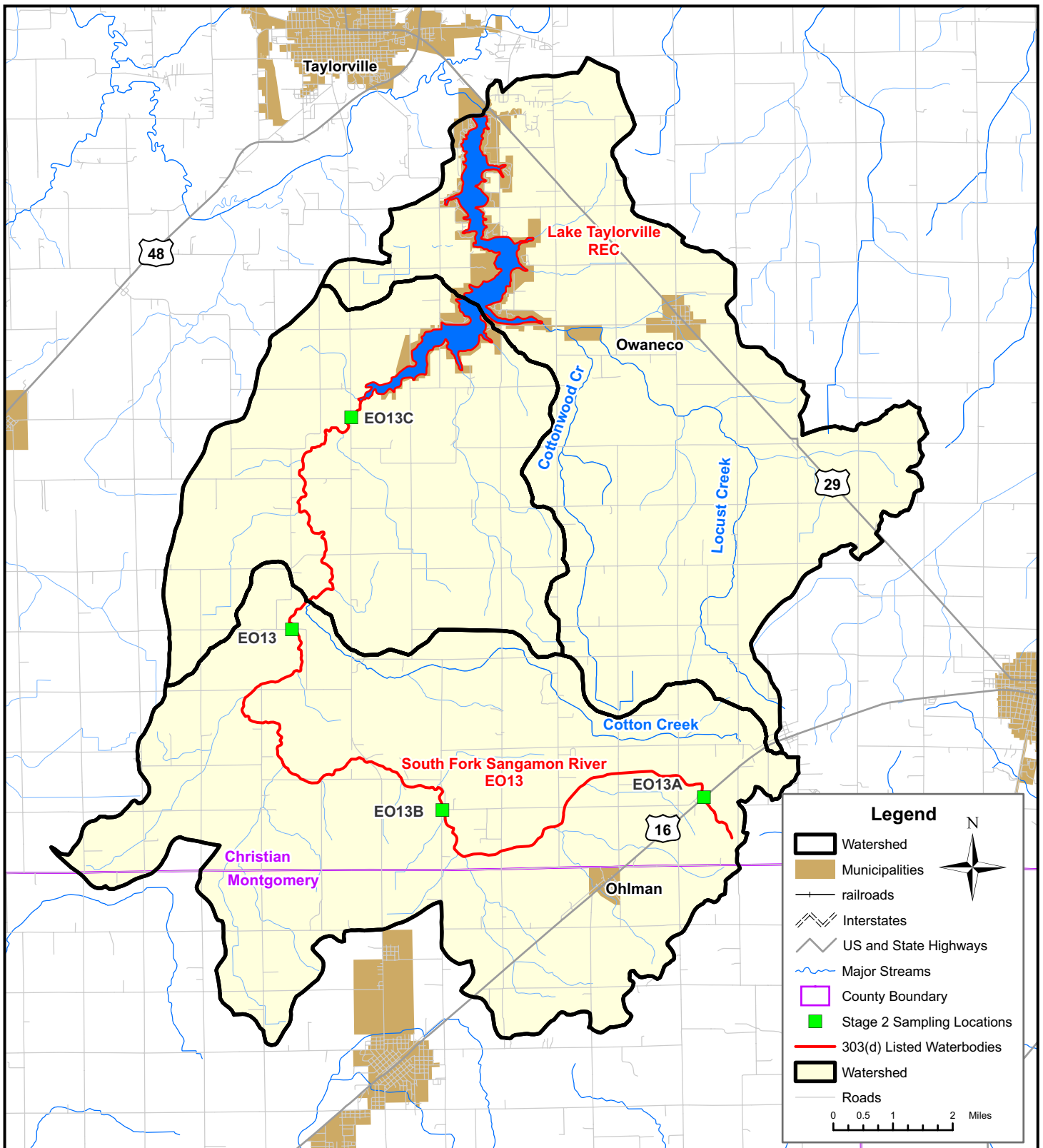


Figure 2-11:
Stage 2 Sampling Locations
South Fork Sangamon River - Lake Taylorville Watershed

DRAFT

THIS PAGE INTENTIONALLY LEFT BLANK

Table 2-2: Field Measurements

Watershed	Water body	Sample Site	Latitude	Longitude	Date	Time	pH (s.u.)	Conductivity (uS/cm)	Turbidity (NTU)	DO (mg/l)	Temp. °C	Depth (ft)
Bay Creek	Cedar Creek	AJF16	37.4661	88.7508	9/25/2006	18:00	6.5	117.0	7.8	8.9	63.9	NA
	Cedar Creek	AJF16	37.4661	88.7508	11/3/2006	11:05	7.2	164.5	8.6	11.0	7.0	NA
	Cedar Creek	AJF16A	37.4954	88.7592	9/25/2006	18:15	6.6	81.0	15.6	9.4	64.0	NA
	Cedar Creek	AJF16A	37.4954	88.7592	11/2/2006	13:30	7.3	101.8	5.4	11.6	9.2	NA
	Bay Creek Ditch	AJK01	37.3245	88.6337	9/25/2006	15:58	6.3	74.0	17.2	5.6	66.6	NA
	Bay Creek Ditch	AJK01	37.3245	88.6337	10/31/2006	8:15	7.2	91.6	20.4	8.2	12.8	NA
	Bay Creek Ditch	AJK01A	37.3282	88.6747	9/25/2006	NOT SAMPLED						NA
	Bay Creek Ditch	AJK01A	37.3282	88.6747	10/31/2006	8:45	7.1	91.1	44.5	6.1	13.2	NA
Cahokia Creek/Holiday Shores Lake	Cahokia Diversion Ditch	JQ01	38.8054	90.1023	8/31/2006	13:40	7.4	606.7	62.3	3.4	23.9	NA
	Cahokia Diversion Ditch	JQ01	38.8054	90.1023	10/17/2006	14:45	8.3	459.8	92.9	9.6	12.6	NA
	Cahokia Diversion Ditch	JQ07	38.8050	90.0673	8/31/2006	14:45	7.4	498.6	68.0	5.3	23.0	NA
	Cahokia Diversion Ditch	JQ07	38.8050	90.0673	10/17/2006	14:15	8.3	427.0	115.8	9.4	12.8	NA
Cedar Creek	Big Muddy River	N13	37.7392	89.4284	9/7/2006	11:15	7.6	646.1	45.5	8.1	29.9	NA
	Big Muddy River	N13	37.7392	89.4284	11/1/2006	10:45	7.1	319.1	258.5	8.2	11.2	NA
	Big Muddy River	N99	37.6252	89.4284	9/7/2006	12:15	7.7	749.5	40.2	10.1	23.6	NA
	Big Muddy River	N99	37.6252	89.4284	11/1/2006	9:45	7.4	333.4	188.4	7.8	11.5	NA
	Cave Creek	NAC01	37.6154	89.3395	9/11/2006	11:45	7.8	288.4	N/A	7.6	20.4	NA
	Cave Creek	NAC01	37.6154	89.3395	11/1/2006	11:45	7.8	213.2	24.0	10.6	9.8	NA
	Cave Creek	NAC01A	37.6380	89.5660	9/11/2006	11:15	7.5	330.3	N/A	4.9	20.5	NA
	Cave Creek	NAC01A	37.6380	89.5660	11/1/2006	12:15	7.7	227.7	20.6	10.1	10.2	NA
Crab Orchard Creek	Crab Orchard Creek	ND11	37.7198	89.1717	9/6/2006	12:15	7.3	385.9	N/A	5.2	20.1	NA
	Crab Orchard Creek	ND11	37.7198	89.1717	11/1/2006	14:00	7.7	229.6	26.7	10.1	11.7	NA
	Crab Orchard Creek	ND12	37.7286	89.1753	9/6/2006	13:15	7.3	502.7	N/A	6.4	24.2	NA
	Crab Orchard Creek	ND12	37.7286	89.1753	11/1/2006	15:00	7.7	233.4	52.2	10.4	11.7	NA
	Crab Orchard Creek	ND13	37.7402	89.1723	9/6/2006	15:00	7.4	494.1	N/A	6.0	22.2	NA
	Crab Orchard Creek	ND13	37.7402	89.1723	11/1/2006	15:45	7.3	234.7	19.0	11.1	11.8	NA
	Crab Orchard Creek	ND15	37.7440	89.1852	9/6/2006	16:30	7.0	470.0	N/A	6.8	22.4	NA
	Crab Orchard Creek	ND15	37.7440	89.1852	11/1/2006	NOT SAMPLED						NA
	Little Crab Orchard Creek	NDA01	37.7525	89.2276	9/6/2006	18:00	7.3	242.5	N/A	2.1	19.2	NA
	Little Crab Orchard Creek	NDA01	37.7525	89.2276	11/2/2006	8:30	7.0	225.5	30.4	8.2	6.3	NA
	Little Crab Orchard Creek	NDA99	37.7011	89.2531	9/9/2006	NOT SAMPLED						NA
	Little Crab Orchard Creek	NDA99	37.7011	89.2531	11/2/2006	10:30	8.7	190.5	17.0	12.3	5.5	NA
	Piles Fork	NDB03	37.7361	89.2016	9/7/2006	10:00	7.3	404.0	7.4	1.6	18.5	NA
	Piles Fork	NDB03	37.7361	89.2016	11/2/2006	9:15	7.7	240.7	25.5	10.3	7.3	NA
	Piles Fork	NDB04	37.7004	89.2205	9/9/2006	7:40	7.7	753.7	7.8	3.6	17.6	NA
Piles Fork	NDB04	37.7004	89.2205	11/2/2006	11:00	8.1	154.9	56.5	11.5	10.2	NA	
Crooked Creek	Little Crooked Creek	OJA-01	38.4416	89.4170	9/7/2006	17:45	7.0	274.0	22.5	3.7	20.3	NA
	Little Crooked Creek	OJA-01	38.4416	89.4170	10/19/2006	14:05	7.5	335.4	84.1	4.7	12.0	NA
	Little Crooked Creek	OJA-02	38.4564	89.3992	9/8/2006	11:15	7.0	284.8	20.2	3.1	19.7	NA
	Little Crooked Creek	OJA-02	38.4564	89.3992	10/19/2006	14:35	7.3	332.5	48.1	3.8	12.4	NA
	Plum Creek	OZH-OK-A2	38.4290	89.5387	9/8/2006	14:00	7.9	663.3	10.4	6.8	23.9	NA
	Plum Creek	OZH-OK-A2	38.4290	89.5387	10/19/2006	10:50	7.6	390.6	51.8	5.3	11.2	NA
	Plum Creek	OZH-OK-A2A	38.4160	89.5140	9/8/2006	16:45	7.8	503.2	56.9	8.5	22.3	NA
	Plum Creek	OZH-OK-A2A	38.4160	89.5140	10/19/2006	11:20	7.8	341.6	74.7	9.0	9.8	NA
	Plum Creek	OZH-OK-C2	38.4441	89.5592	9/8/2006	12:45	7.3	367.1	11.2	1.1	18.8	NA
	Plum Creek	OZH-OK-C2	38.4441	89.5592	10/19/2006	10:15	7.4	361.7	66.4	2.5	12.0	NA
	Plum Creek	OZH-OK-C2A	38.4568	89.5630	9/8/2006	17:30	7.8	977.9	13.4	4.6	20.7	NA
	Plum Creek	OZH-OK-C2A	38.4568	89.5630	10/19/2006	13:40	7.7	433.1	48.8	3.2	11.5	NA
	Plum Creek	OZH-OK-C3	38.4626	89.5598	9/8/2006	15:00	7.7	983.2	38.5	4.1	21.2	NA
	Plum Creek	OZH-OK-C3	38.4626	89.5598	10/19/2006	9:35	7.5	384.1	556.5	5.2	11.7	NA

Table 2-2: Field Measurements

Watershed	Water body	Sample Site	Latitude	Longitude	Date	Time	pH (s.u.)	Conductivity (uS/cm)	Turbidity (NTU)	DO (mg/l)	Temp. °C	Depth (ft)
Little Wabash	Little Wabash River	C09	38.4407	88.2581	1/25/2005	14:00	7.3	415	42	12.1	1.1	NA
	Little Wabash River	C09	38.4407	88.2581	3/17/2005	8:00	8.3	700	23	14.9	7	NA
	Little Wabash River	C09	38.4407	88.2581	4/19/2005	14:30	7.8	535	50	7.3	18.8	NA
	Little Wabash River	C09	38.4407	88.2581	5/9/2005	10:30	7.3	738	60	6.7	19.7	NA
	Little Wabash River	C09	38.4407	88.2581	6/23/2005	7:30	7.7	690	47	5.1	26	NA
	Little Wabash River	C09	38.4407	88.2581	8/23/2005	13:00	7.2	290	70	4.2	27.1	NA
	Little Wabash River	C09	38.4407	88.2581	9/27/2005	16:00	7.8	533	25	7.5	24.6	NA
	Little Wabash River	C09	38.4407	88.2581	10/27/2005	14:00	7.8	550	11	8.7	11.7	NA
	Little Wabash River	C09	38.4407	88.2581	12/6/2005	13:00	7.6	375	70	11.8	1.6	NA
	Little Wabash River	C09	38.4407	88.2581	2/1/2006	13:00	7.6	390	200	9.3	6.8	NA
	Little Wabash River	C09	38.4407	88.2581	3/15/2006	10:00	6.6	150	130	6.2	12.4	NA
	Little Wabash River	C09	38.4407	88.2581	4/18/2006	16:00	7.9	572	40	8.1	20.1	NA
	Little Wabash River	C09	38.4407	88.2581	4/26/2006	10:00	7.8	580	59	7.2	17.7	NA
	Little Wabash River	C09	38.4407	88.2581	5/1/2006	9:45	7.5	543	75	6.4	16.2	NA
	Little Wabash River	C09	38.4407	88.2581	5/10/2006	10:00	7.4	475		6.2	18.5	NA
	Little Wabash River	C09	38.4407	88.2581	5/17/2006	11:00	7.4	421	70	7.4	14.7	NA
	Little Wabash River	C09	38.4407	88.2581	5/24/2006	9:45	7.5	473		6.6	18.9	NA
	Little Wabash River	C09	38.4407	88.2581	5/31/2006	10:20	7.2	352		4	25.3	NA
	Little Wabash River	C09	38.4407	88.2581	6/7/2006	10:15	7.2	345		4.3	23.3	NA
	Little Wabash River	C09	38.4407	88.2581	6/15/2006	8:50	7.4	536	55	5.2	23.9	NA
	Little Wabash River	C09	38.4407	88.2581	6/22/2006	10:05	7.5	608	65	4.4	28.4	NA
	Little Wabash River	C09	38.4407	88.2581	6/27/2006	10:40	7.44	462	64	4.9	24.17	NA
	Little Wabash River	C09	38.4407	88.2581	7/5/2006	10:30	7.2	321		4.4	27.5	NA
	Little Wabash River	C09	38.4407	88.2581	7/12/2006	10:30	7.3	456		3.8	25.3	NA
	Little Wabash River	C09	38.4407	88.2581	7/20/2006	10:00	7.4	372		4.8	29.4	NA
	Little Wabash River	C09	38.4407	88.2581	7/27/2006	10:00	7.2	239		4.8	26.4	NA
	Little Wabash River	C09	38.4407	88.2581	8/1/2006	8:30	7.3	306	65	4.5	30.3	NA
	Little Wabash River	C09	38.4407	88.2581	8/8/2006	11:05	7.3	392	55	4.75	28.4	NA
	Little Wabash River	C33	38.2699	88.1377	4/18/2006	11:00	7.1	418	35	4.4	19.8	NA
	Little Wabash River	C33	38.2699	88.1377	4/26/2006	12:15	7.7	607	56	6	19	NA
	Little Wabash River	C33	38.2699	88.1377	5/1/2006	11:45	7.7	597	58	6.8	16.8	NA
	Little Wabash River	C33	38.2699	88.1377	5/10/2006	12:20	7.3	409		5.3	18.7	NA
	Little Wabash River	C33	38.2699	88.1377	5/17/2006	14:00	7.4	462	90	7.2	15.5	NA
	Little Wabash River	C33	38.2699	88.1377	5/24/2006	12:15	7.4	494		6.4	19.9	NA
	Little Wabash River	C33	38.2699	88.1377	5/31/2006	12:40	7.2	449		3.9	25.4	NA
	Little Wabash River	C33	38.2699	88.1377	6/7/2006	12:30	6.8	286		3	23.01	NA
	Little Wabash River	C33	38.2699	88.1377	6/15/2006	11:05	7.5	511	45	8.1	25.1	NA
	Little Wabash River	C33	38.2699	88.1377	6/22/2006	12:00	7.2	546	38	3	29.8	NA
	Little Wabash River	C33	38.2699	88.1377	6/27/2006	11:50	7.4	548	61	4.8	26.17	NA
	Little Wabash River	C33	38.2699	88.1377	7/5/2006	13:00	7.3	334		5.8	29	NA
	Little Wabash River	C33	38.2699	88.1377	7/12/2006	12:30	7.1	326		3.4	25.3	NA
	Little Wabash River	C33	38.2699	88.1377	7/20/2006	12:20	6.9	247		3.4	29.9	NA
	Little Wabash River	C33	38.2699	88.1377	7/27/2006	12:10	7.5	308		6.4	27.4	NA
	Little Wabash River	C33	38.2699	88.1377	8/1/2006	10:30	7.3	296	40	4.7	30.8	NA
Little Wabash River	C33	38.2699	88.1377	8/8/2006	13:30	7.3	361	40	4.9	29.8	NA	
Johnson Creek	CCA12	38.3732	88.3449	9/9/2006	13:05	8.2	1402.0	13.4	14.2	28.4	NA	
Johnson Creek	CCA12	38.3732	88.3449	11/14/2006	9:45	7.5	651.4	645.5	7.7	7.0	NA	
Johnson Creek	CCA13	38.3789	88.3511	9/9/2006	14:30	8.6	1517.0	3.1	14.9	25.4	NA	
Johnson Creek	CCA13	38.3789	88.3511	11/14/2006	10:15	7.7	649.4	19.0	12.8	8.1	NA	
Johnson Creek	CCA14A	38.3830	88.3546	9/9/2006	15:25	7.6	836.0	3.6	5.7	21.6	NA	

Table 2-2: Field Measurements

Watershed	Water body	Sample Site	Latitude	Longitude	Date	Time	pH (s.u.)	Conductivity (uS/cm)	Turbidity (NTU)	DO (mg/l)	Temp. °C	Depth (ft)
Little Wabash (cont.)	Johnson Creek	CCA14A	38.3830	88.3546	11/14/2006	10:25	7.7	694.2	2.4	12.5	8.0	NA
	Johnson Creek	CCAFFA1A	38.3881	88.3535	9/10/2006	10:50	7.4	788.0	5.9	3.8	19.8	NA
	Johnson Creek	CCAFFA1A	38.3881	88.3535	11/14/2006	10:45	7.4	789.8	4.3	12.3	7.5	NA
	Pond Creek	CCFFD1	38.3648	88.3130	9/9/2006	10:30	7.7	576.0	8.6	7.1	19.5	NA
	Pond Creek	CCFFD1	38.3648	88.3130	10/31/2006	10:10	7.6	8719.7	29.2	8.2	3.8	NA
	Pond Creek	CCFFD1A	38.3720	88.3181	9/9/2006	NOT SAMPLED Site Dry/no available alternate sites						NA
	Pond Creek	CCFFD1A	38.3720	88.3181	11/9/2006	12:15	7.3	742.5	9.1	11.2	13.6	NA
	Pond Creek	CCFFD1B	38.3793	88.3230	9/9/2006	11:45	7.5	784.0	10.0	8.6	22.9	NA
	Pond Creek	CCFFD1B	38.3793	88.3230	11/9/2006	11:35	7.3	827.9	4.1	12.1	12.7	NA
	Pond Creek	CCFFD1C	38.3999	88.3370	9/10/2006	12:10	8.0	3941.0	17.8	11.9	19.3	NA
	Pond Creek	CCFFD1C	38.3999	88.3370	10/31/2006	11:20	8.8	1394.0		14.4	4.4	NA
	Elm River	CD01	38.5184	88.1320	1/26/2005	13:00	7.1	388	36	9.1	1.4	NA
	Elm River	CD01	38.5184	88.1320	3/15/2005	11:30	8.4	950	7.2	14.6	6.2	NA
	Elm River	CD01	38.5184	88.1320	4/20/2005	11:30	7.4	670	60	6.7	20.1	NA
	Elm River	CD01	38.5184	88.1320	5/5/2005	13:00	7.5	625	27	7.6	13.8	NA
	Elm River	CD01	38.5184	88.1320	6/23/2005	10:00	7.5	1050	22	5.2	24.7	NA
	Elm River	CD01	38.5184	88.1320	8/18/2005	11:00	7.6	730	34	3.6	24.6	NA
	Elm River	CD01	38.5184	88.1320	9/29/2005	11:30	7.6	700	17	3.6	18.5	NA
	Elm River	CD01	38.5184	88.1320	10/18/2005	11:30	7.5	680	8.2	5.9	15	NA
	Elm River	CD01	38.5184	88.1320	12/8/2005	10:30	7.4	321	65	9.6	0.3	NA
	Elm River	CD01	38.5184	88.1320	2/1/2006	15:00	7.5	430	80	9.1	7	NA
	Elm River	CD01	38.5184	88.1320	3/1/2006	13:30	7.4	840	42	10.2	9.1	NA
	Elm River	CD01	38.5184	88.1320	4/6/2006	11:00	7.3	440	90	8.6	13.5	NA
	Elm River	CD01	38.5184	88.1320	4/18/2006	14:30	7.3	670	40	5.6	20.9	NA
	Elm River	CD01	38.5184	88.1320	4/26/2006	11:15	7.5	860		6.2	15.9	NA
	Elm River	CD01	38.5184	88.1320	5/1/2006	11:00	7.4	958		5.9	15.2	NA
	Elm River	CD01	38.5184	88.1320	5/10/2006	11:10	7.2	489		5	18.2	NA
	Elm River	CD01	38.5184	88.1320	5/17/2006	9:30	7.1	484	35	7	13.8	NA
	Elm River	CD01	38.5184	88.1320	5/24/2006	11:20	7.2	594		5.7	18.5	NA
	Elm River	CD01	38.5184	88.1320	5/31/2006	11:30	7.2	605		3.8	25.7	NA
	Elm River	CD01	38.5184	88.1320	6/7/2006	11:25	7	346		4.5	23.4	NA
	Elm River	CD01	38.5184	88.1320	6/15/2006	9:50	7.1	622		4.6	22.5	NA
	Elm River	CD01	38.5184	88.1320	6/22/2006	11:15	7.1	443		4.6	27.9	NA
	Elm River	CD01	38.5184	88.1320	6/27/2006	9:15	6.77	229	91	5	21.95	NA
	Elm River	CD01	38.5184	88.1320	7/5/2006	11:50	7.2	588		3.6	26.6	NA
	Elm River	CD01	38.5184	88.1320	7/12/2006	11:30	7.2	569		4.2	23.9	NA
	Elm River	CD01	38.5184	88.1320	7/20/2006	11:15	7	285		2.8	28.2	NA
	Elm River	CD01	38.5184	88.1320	7/27/2006	11:05	7.1	346		3.5	25.8	NA
	Elm River	CD01	38.5184	88.1320	8/1/2006	9:20	7.3	382		4	27.8	NA
	Elm River	CD01	38.5184	88.1320	8/8/2006	12:20	7.1	425		4.1	26.3	NA
Elm River	CD02	38.6751	88.4362	9/8/2006	17:45	7.5	344.0	15.9	8.1	23.2	NA	
Elm River	CD02	38.6751	88.4362	11/8/2006	NOT SAMPLED Miscommunication between field crews caused error in sampling						NA	
Elm River	CD02A	38.4894	88.3051	9/12/2006	12:51	7.2	404.0	15.7	3.8	22.0	NA	
Elm River	CD02A	38.4894	88.3051	11/8/2006	NOT SAMPLED Miscommunication between field crews caused error in sampling						NA	
Seminary Creek	CDGFLC6	38.6180	88.4384	9/8/2006	12:25	7.7	708.0	4.2	6.6	19.5	NA	
Seminary Creek	CDGFLC6	38.6180	88.4384	11/8/2006	17:00	7.5	527.6	17.5	10.5	12.4	NA	
Seminary Creek	CDGFLC6A	38.6135	88.4245	9/8/2006	11:10	7.7	720.0	201.2	7.0	20.1	NA	
Seminary Creek	CDGFLC6A	38.6135	88.4245	11/8/2006	16:45	7.3	561.7	15.1	12.0	13.5	NA	
Seminary Creek	CDGFLA1	38.6561	88.4832	9/8/2006	15:40	7.9	558.0	7.0	10.0	22.0	NA	
Seminary Creek	CDGFLA1	38.6561	88.4832	11/8/2006	14:45	7.3	385.0	12.5	14.3	12.7	NA	

Table 2-2: Field Measurements

Watershed	Water body	Sample Site	Latitude	Longitude	Date	Time	pH (s.u.)	Conductivity (uS/cm)	Turbidity (NTU)	DO (mg/l)	Temp. °C	Depth (ft)
Little Wabash (cont.)	Seminary Creek	CDGFLA1A	38.6595	88.4890	9/8/2006	13:45	7.4	362.0	22.7	2.6	19.0	NA
	Seminary Creek	CDGFLA1A	38.6595	88.4890	11/8/2006	15:50	7.2	429.8	16.8	15.1	12.7	NA
	Village Creek	CE01	38.4348	88.1369	9/6/2006	17:30	8.1	610.0	11.4	9.9	24.9	NA
	Village Creek	CE01	38.4348	88.1369	11/14/2006	8:45	7.5	697.9	8.0	10.6	6.8	NA
	Village Creek	CE01A	38.4294	88.0943	9/12/2006	17:05	7.2	327.0	145.2	5.8	22.6	NA
	Village Creek	CE01A	38.4294	88.0943	11/9/2006	13:45	7.2	607.2	8.7	11.2	14.2	NA
	Village Creek	CE02	38.4150	88.1659	9/6/2006	15:20	7.8	568.0	15.7	7.9	25.0	NA
	Village Creek	CE02	38.4150	88.1659	11/9/2006	12:55	7.5	587.4	14.1	10.7	13.1	NA
	Big Muddy Creek	CJ05	38.7693	88.3093	9/7/2006	16:45	8.2	63.1	11.4	10.5	23.6	NA
	Big Muddy Creek	CJ05	38.7693	88.3093	11/8/2006	11:30	7.4	457.0	32.5	12.4	8.3	NA
	Big Muddy Creek	CJ06	38.8298	88.3642	9/7/2006	18:10	7.5	588.0	34.6	4.9	21.8	NA
	Big Muddy Creek	CJ06	38.8298	88.3642	11/8/2006	11:00	7.3	455.1	15.8	11.6	10.6	NA
	Little Muddy Creek	CJA01	38.7647	88.3760	9/12/2006	10:20	7.0	321.0	9.5	3.4	20.9	NA
	Little Muddy Creek	CJA01	38.7647	88.3760	11/13/2006	12:00	7.0	267.9	113.2	10.1	7.4	NA
	Little Muddy Creek	CJA02	38.7047	88.3174	9/7/2006	14:20	6.8	554.0	45.9	2.8	20.4	NA
	Little Muddy Creek	CJA02	38.7047	88.3174	11/8/2006	12:30	7.0	497.0	35.8	9.3	10.4	NA
	Big Muddy Diversion Ditch	CJAE01	38.6865	88.2967	9/7/2006	12:10	7.1	1946.0	26.9	9.1	22.2	NA
	Big Muddy Diversion Ditch	CJAE01	38.6865	88.2967	11/8/2006	13:05	7.3	478.2	30.8	10.8	11.7	NA
Big Muddy Diversion Ditch	CJAE01A	38.7467	88.2977	9/7/2006	15:45	8.1	908.0	6.5	10.3	24.3	NA	
Big Muddy Diversion Ditch	CJAE01A	38.7467	88.2977	11/13/2006	12:30	7.6	452.9	37.8	9.8	8.2	NA	
Mary's River/North Fork Cox Creek	North Fork Cox Creek	IIHA01	38.0114	89.6460	9/9/2006	17:40	7.9	2073.0	N/A	10.0	22.0	NA
	North Fork Cox Creek	IIHA01	38.0114	89.6460	10/18/2006	14:25	8.3	2995.0	13.5	8.1	15.4	NA
	North Fork Cox Creek	IIHA31	38.0293	89.6303	9/9/2006	17:10	8.2	3491.0	N/A	9.6	23.9	NA
	North Fork Cox Creek	IIHA31	38.0293	89.6303	10/18/2006	14:45	8.4	3215.0	8.5	8.6	15.5	NA
	North Fork Cox Creek	IIHA-STC1	38.0015	89.6557	9/9/2006	16:15	7.8	3019.0	N/A	7.1	21.9	NA
	North Fork Cox Creek	IIHA-STC1	38.0015	89.6557	10/18/2006	14:00	8.1	1990.0	20.0	7.0	14.9	NA
	North Fork Cox Creek	IIHA-STE1	38.0048	89.6526	9/9/2006	15:45	7.8	3422.0	N/A	6.9	20.7	NA
	North Fork Cox Creek	IIHA-STE1	38.0048	89.6526	10/18/2006	13:40	8.0	2505.0	16.3	6.0	14.7	NA
	Maxwell Creek	IIKSPA1	38.1242	89.6870	9/7/2006							NA
	Maxwell Creek	IIKSPA1	38.1242	89.6870	10/17/2006							NA
	Maxwell Creek	IIKSPC1	38.1182	89.6885	9/7/2006	15:30	7.3	968.1	4.8	2.0	24.3	NA
	Maxwell Creek	IIKSPC1	38.1182	89.6885	10/17/2006	8:20	7.1	561.5	22.3	20.2	18.4	NA
	Maxwell Creek	IIKSPC3A	38.1090	89.6850	9/7/2006	15:00	7.5	997.0	4.4	2.6	21.6	NA
	Maxwell Creek	IIKSPC3A	38.1090	89.6850	10/17/2006	8:45	7.5	457.8	19.2	6.5	15.4	NA
	Maxwell Creek	IIKSPE1A	38.1218	89.6889	9/7/2006							NA
	Maxwell Creek	IIKSPE1A	38.1218	89.6889	10/17/2006							NA
	Randolph County Lake	RIB-1	37.9707	89.7962	9/9/2006	12:00	9.1	279.7	N/A	13.9	25.6	1
	Randolph County Lake	RIB-1	37.9707	89.7962	9/9/2006	12:02	9.1	279.5	N/A	13.9	24.9	2
	Randolph County Lake	RIB-1	37.9707	89.7962	9/9/2006	12:04	9.1	279.2	N/A	13.8	24.7	3
	Randolph County Lake	RIB-1	37.9707	89.7962	9/9/2006	12:06	9.1	278.8	N/A	13.9	24.6	4
	Randolph County Lake	RIB-1	37.9707	89.7962	9/9/2006	12:08	9.0	279.3	N/A	13.2	24.4	5
	Randolph County Lake	RIB-1	37.9707	89.7962	9/9/2006	12:10	9.0	279.7	N/A	12.6	24.3	6
	Randolph County Lake	RIB-1	37.9707	89.7962	9/9/2006	12:12	8.9	280.4	N/A	11.8	24.2	7
	Randolph County Lake	RIB-1	37.9707	89.7962	9/9/2006	12:14	8.2	286.0	N/A	6.2	23.9	8
	Randolph County Lake	RIB-1	37.9707	89.7962	9/9/2006	12:16	7.8	287.4	N/A	4.4	23.7	9
	Randolph County Lake	RIB-1	37.9707	89.7962	9/9/2006	12:18	7.6	288.9	N/A	2.5	23.5	10
Randolph County Lake	RIB-1	37.9707	89.7962	9/9/2006	12:20	7.3	290.3	N/A	0.3	23.1	11	
Randolph County Lake	RIB-1	37.9707	89.7962	9/9/2006	12:22	7.3	296.0	N/A	0.1	22.7	12	
Randolph County Lake	RIB-1	37.9707	89.7962	9/9/2006	12:24	7.1	317.6	N/A	0.0	21.2	13	
Randolph County Lake	RIB-1	37.9707	89.7962	9/9/2006	12:26	7.1	332.7	N/A	0.0	18.5	14	
Randolph County Lake	RIB-1	37.9707	89.7962	9/9/2006	12:28	7.1	330.3	N/A	0.0	17.1	15	

Table 2-2: Field Measurements

Watershed	Water body	Sample Site	Latitude	Longitude	Date	Time	pH (s.u.)	Conductivity (uS/cm)	Turbidity (NTU)	DO (mg/l)	Temp. °C	Depth (ft)
Mary's River/North Fork Cox Creek (cont.)	Randolph County Lake	RIB-1	37.9707	89.7962	9/9/2006	12:30	7.1	329.6	N/A	0.0	16.1	16
	Randolph County Lake	RIB-1	37.9707	89.7962	9/9/2006	12:32	7.1	329.9	N/A	0.0	14.7	17
	Randolph County Lake	RIB-1	37.9707	89.7962	9/9/2006	12:34	7.1	330.0	N/A	0.0	13.6	18
	Randolph County Lake	RIB-1	37.9707	89.7962	9/9/2006	12:36	7.1	332.4	N/A	0.0	12.4	19
	Randolph County Lake	RIB-1	37.9707	89.7962	9/9/2006	12:38	7.1	335.4	N/A	0.0	11.8	20
	Randolph County Lake	RIB-1	37.9707	89.7962	9/9/2006	12:40	7.1	341.7	N/A	0.0	11.3	21
	Randolph County Lake	RIB-1	37.9707	89.7962	9/9/2006	12:42	7.1	347.9	N/A	0.0	10.9	22
	Randolph County Lake	RIB-1	37.9707	89.7962	9/9/2006	12:44	7.1	350.1	N/A	0.0	10.8	23
	Randolph County Lake	RIB-1	37.9707	89.7962	9/9/2006	12:46	7.1	352.6	N/A	0.0	10.6	24
	Randolph County Lake	RIB-1	37.9707	89.7962	9/9/2006	12:48	7.0	363.8	N/A	0.0	10.2	25
	Randolph County Lake	RIB-1	37.9707	89.7962	10/18/2006	10:25	8.0	306.1	5.6	7.1	15.8	0
	Randolph County Lake	RIB-1	37.9707	89.7962	10/18/2006	10:25	7.8	305.0	6.7	5.4	15.7	3.28
	Randolph County Lake	RIB-1	37.9707	89.7962	10/18/2006	10:25	7.8	304.9	5.9	5.4	15.7	6.56
	Randolph County Lake	RIB-1	37.9707	89.7962	10/18/2006	10:25	7.8	303.6	6.6	5.3	15.6	9.84
	Randolph County Lake	RIB-1	37.9707	89.7962	10/18/2006	10:25	7.7	303.5	7.1	5.3	15.6	13.12
	Randolph County Lake	RIB-1	37.9707	89.7962	10/18/2006	10:25	7.6	304.0	11.9	4.5	13.3	16.4
	Randolph County Lake	RIB-1	37.9707	89.7962	10/18/2006	10:25	7.5	371.4	9.8	0.6	12.7	19.68
	Randolph County Lake	RIB-1	37.9707	89.7962	10/18/2006	10:25	7.6	392.9	8.3	0.5	10.9	22.96
	Randolph County Lake	RIB-1	37.9707	89.7962	10/18/2006	10:25	7.5	435.0	63.4	0.3	10.1	26.24
	Randolph County Lake	RIB-2	37.9738	89.8000	9/9/2006	14:00	9.0	286.4	N/A	13.3	27.0	1
	Randolph County Lake	RIB-2	37.9738	89.8000	9/9/2006	14:02	9.0	282.2	N/A	13.8	26.8	2
	Randolph County Lake	RIB-2	37.9738	89.8000	9/9/2006	14:04	9.1	279.7	N/A	14.7	25.0	3
	Randolph County Lake	RIB-2	37.9738	89.8000	9/9/2006	14:06	9.0	280.2	N/A	14.3	24.7	4
	Randolph County Lake	RIB-2	37.9738	89.8000	9/9/2006	14:08	8.9	282.2	N/A	12.5	24.4	5
	Randolph County Lake	RIB-2	37.9738	89.8000	9/9/2006	14:10	8.6	286.3	N/A	9.0	24.1	6
	Randolph County Lake	RIB-2	37.9738	89.8000	9/9/2006	14:12	8.1	290.2	N/A	6.0	24.0	7
	Randolph County Lake	RIB-2	37.9738	89.8000	9/9/2006	14:14	7.8	292.2	N/A	4.0	23.9	8
	Randolph County Lake	RIB-2	37.9738	89.8000	9/9/2006	14:16	7.7	292.7	N/A	3.1	23.8	9
	Randolph County Lake	RIB-2	37.9738	89.8000	10/18/2006	12:05	8.0	304.9	10.3	7.1	16.0	0
	Randolph County Lake	RIB-2	37.9738	89.8000	10/18/2006	12:05	7.9	304.5	7.0	6.7	15.9	3.28
	Randolph County Lake	RIB-2	37.9738	89.8000	10/18/2006	12:05	7.8	304.5	6.6	6.4	15.9	6.56
	Randolph County Lake	RIB-2	37.9738	89.8000	10/18/2006	12:05	7.8	304.5	6.3	6.3	15.8	9.84
	Randolph County Lake	RIB-3	37.9800	89.7990	9/9/2006	13:00	9.0	283.0	N/A	13.2	26.4	1
Randolph County Lake	RIB-3	37.9800	89.7990	9/9/2006	13:02	9.0	283.3	N/A	12.9	26.5	2	
Randolph County Lake	RIB-3	37.9800	89.7990	9/9/2006	13:04	9.0	281.0	N/A	12.8	25.8	3	
Randolph County Lake	RIB-3	37.9800	89.7990	9/9/2006	13:06	9.0	280.4	N/A	12.9	25.0	4	
Randolph County Lake	RIB-3	37.9800	89.7990	9/9/2006	13:08	9.0	279.7	N/A	12.9	24.6	5	
Randolph County Lake	RIB-3	37.9800	89.7990	9/9/2006	13:10	9.0	279.7	N/A	12.6	24.5	6	
Randolph County Lake	RIB-3	37.9800	89.7990	10/18/2006	11:15	8.0	305.0	8.8	7.9	16.0	0	
Randolph County Lake	RIB-3	37.9800	89.7990	10/18/2006	11:15	7.9	304.7	8.7	7.1	16.0	3.28	
Randolph County Lake	RIB-3	37.9800	89.7990	10/18/2006	11:15	7.8	304.7	10.4	6.7	16.0	6.56	
Randolph County Lake Tributary	RIB-Trib	37.9813	89.7988	9/9/2006	13:20	9.0	284.0	N/A	12.9	28.4	NA	
Randolph County Lake Tributary	RIB-Trib	37.9813	89.7988	10/18/2006	11:45	8.1	341.7	46.3	8.3	16.2	NA	
Sangamon River/Lake Decatur	Owl Creek	EZV01	40.3254	88.3531	8/30/2006	12:50	7.4	669.0	50.8	8.5	21.2	NA
	Owl Creek	EZV01	40.3254	88.3531	11/2/2006	9:25	8.2	856.7		12.2	5.1	NA
	Owl Creek	EZVA1	40.3115	88.3409	8/30/2006	11:05	7.7	606.9	52.3	6.5	19.0	NA
	Owl Creek	EZVA1	40.3115	88.3409	11/2/2006	10:33	8.2	856.3		11.8	4.7	NA
	Owl Creek	EZVC1	40.3101	88.3423	8/30/2006	10:25	7.3	1450.0	25.6	5.0	21.0	NA
	Owl Creek	EZVC1	40.3101	88.3423	11/2/2006	12:20	8.1	990.7		11.7	6.0	NA
	Owl Creek	EZVE1	40.3113	88.3415	8/30/2006	10:45	7.5	1497.0	20.3	11.1	21.5	NA
Owl Creek	EZVE1	40.3113	88.3415	11/2/2006	12:59	8.3	859.8		12.5	6.1	NA	

Table 2-2: Field Measurements

Watershed	Water body	Sample Site	Latitude	Longitude	Date	Time	pH (s.u.)	Conductivity (uS/cm)	Turbidity (NTU)	DO (mg/l)	Temp. °C	Depth (ft)
Shoal Creek	Shoal Creek	OI05	38.5361	89.5213	9/1/2006	12:35	7.5	563.4	38.7	9.1	22.9	NA
	Shoal Creek	OI05	38.5361	89.5213	10/17/2006	11:30	7.9	604.4	39.7	8.5	12.0	NA
	Shoal Creek	OI05A	38.5370	89.5330	9/1/2006	NOT SAMPLED						NA
	Shoal Creek	OI05A	38.5370	89.5330	10/17/2006	Site located at end of private road with chained fence/alternate location not located						NA
	Shoal Creek	OI05B	38.5333	89.5496	9/1/2006	14:20	7.8	542.2	43.0	10.8	26.2	NA
	Shoal Creek	OI05B	38.5333	89.5496	10/17/2006	11:15	7.9	542.4	72.7	8.7	12.3	NA
	Shoal Creek	OI05C	38.5020	89.5661	9/1/2006	15:40	7.8	535.3	43.5	10.2	23.5	NA
	Shoal Creek	OI05C	38.5020	89.5661	10/16/2006	10:30	8.0	578.9	46.0	9.4	12.1	NA
	Locust Fork	OIC01	38.7715	89.5556	8/31/2006	NOT SAMPLED						NA
	Locust Fork	OIC01	38.7715	89.5556	10/19/2006	12:20	7.8	401.1	24.3	3.8	10.0	NA
	Locust Fork	OIC02	38.7536	89.5288	8/31/2006	17:50	8.0	499.6	23.2	9.4	24.2	NA
	Locust Fork	OIC02	38.7536	89.5288	10/17/2006	13:00	7.7	422.2	26.9	5.2	14.2	NA
	Chicken Creek	OIO09	38.6407	89.5025	9/1/2006	NOT SAMPLED						NA
	Chicken Creek	OIO09	38.6407	89.5025	10/17/2006	Sites dry during both visits/sites located at only two road crossings on segment						NA
	Chicken Creek	OIO09A	38.6373	89.5260	9/1/2006	NOT SAMPLED						NA
	Chicken Creek	OIO09A	38.6373	89.5260	10/17/2006	Site dry/no other road crossings on segment						NA
	Cattle Creek	OIP10	38.6649	89.5170	8/31/2006	NOT SAMPLED						NA
	Cattle Creek	OIP10	38.6649	89.5170	10/17/2006	12:05	7.9	928.0	105.6	2.0	14.2	NA
	Cattle Creek	OIP10A	38.6744	89.5359	8/31/2006	NOT SAMPLED						NA
	Cattle Creek	OIP10A	38.6744	89.5359	10/17/2006	Site dry/no other road crossings on segment						NA
South Fork Saline River/Lake of Egypt	South Fork Saline River	ATH08	37.6399	88.9281	9/26/2006	10:20	7.1	165.0	0.6	8.7	23.6	NA
	South Fork Saline River	ATH08	37.6399	88.9281	10/31/2006	11:15	6.6	213.1	10.0	8.8	19.0	NA
	South Fork Saline River	ATH14	NA	NA	9/26/2006	NOT SAMPLED						NA
	South Fork Saline River	ATH14	NA	NA	10/31/2006	Sites located on private property and/or not accessible by roads						NA
	South Fork Saline River	ATHLEC1	NA	NA	9/26/2006	No other road crossings available on segment						NA
	South Fork Saline River	ATHLEC1	NA	NA	10/31/2006	NOT SAMPLED						NA
	South Fork Saline River	ATHLEC2	37.6295	88.9465	9/26/2006	9:45	6.6	81.0	15.6	9.4	18.1	NA
	South Fork Saline River	ATHLEC2	37.6295	88.9465	10/31/2006	12:00	6.8	137.7	11.6	9.6	17.1	NA
	Briers Creek	ATHS01	37.6766	88.7178	9/11/2006	11:30	7.6	1997.0	2.0	9.1	21.3	NA
	Briers Creek	ATHS01	37.6766	88.7178	9/27/2006	9:00	7.3	1392.0	3.4	10.2	15.5	NA
	Briers Creek	ATHS01	37.6766	88.7178	10/30/2006	16:30	7.1	1281.0	19.6	9.4	13.7	NA
	Briers Creek	ATHS01	37.6766	88.7178	11/15/2006	10:25	7.0	700.1	185.3	4.6	9.4	NA
	Briers Creek	ATHS01A	37.6995	88.7257	9/11/2006	10:00	7.1	765.0	5.6	9.7	17.9	NA
	Briers Creek	ATHS01A	37.6995	88.7257	9/27/2006	11:30	7.5	817.0	1.9	9.7	17.0	NA
	Briers Creek	ATHS01A	37.6995	88.7257	11/2/2006	12:00	8.0	862.8	3.0	8.5	9.5	NA
	Briers Creek	ATHS01A	37.6995	88.7257	11/15/2006	11:10	6.8	226.1	36.3	5.4	10.2	NA
	Briers Creek	ATHS01B	37.6943	88.7245	9/11/2006	10:25	7.2	507.0	6.2	9.5	17.8	NA
	Briers Creek	ATHS01B	37.6943	88.7245	9/27/2006	10:35	6.7	500.0	0.5	9.7	17.3	NA
	Briers Creek	ATHS01B	37.6943	88.7245	11/2/2006	12:20	7.4	726.7	2.9	9.9	9.5	NA
	Briers Creek	ATHS01B	37.6943	89.7640	11/15/2006	11:30	6.8	198.9	69.1	4.0	10.0	NA
	Briers Creek	ATHS01C	37.6882	88.7195	9/11/2006	12:55	6.8	2071.0	21.5	6.3	19.0	NA
	Briers Creek	ATHS01C	37.6882	88.7195	9/27/2006	9:30	7.0	1571.0	2.2	9.8	15.1	NA
	Briers Creek	ATHS01C	37.6882	88.7195	10/31/2006	14:30	7.4	1296.0	4.5	9.4	12.0	NA
	Briers Creek	ATHS01C	37.6882	88.7195	11/15/2006	10:45	7.0	848.6	90.7	8.8	9.5	NA
	East Palzo Creek	ATHV01	37.6502	88.7608	9/11/2006	10:40	6.9	375.0	16.4	6.7	22.7	NA
	East Palzo Creek	ATHV01	37.6502	88.7608	9/27/2006	NOT SAMPLED						NA
	East Palzo Creek	ATHV01	37.6502	88.7608	10/31/2006	13:40	6.5	490.6	14.2	7.6	12.4	NA
	East Palzo Creek	ATHV01	37.6502	88.7608	11/15/2006	10:00	6.3	554.5	200.0	5.1	9.4	NA
	East Palzo Creek	ATHV01A	37.6143	88.7788	9/11/2006	8:25	7.2	1878.0	1.7	6.6	18.8	NA
	East Palzo Creek	ATHV01A	37.6143	88.7788	9/27/2006	NOT SAMPLED						NA
East Palzo Creek	ATHV01A	37.6143	88.7788	10/31/2006	Site dry/no other road crossings on segment						NA	
East Palzo Creek	ATHV01A	37.6143	88.7788	11/15/2006	9:05	6.8	158.9	81.9	9.0	9.4	NA	
East Palzo Creek	ATHV01B	37.6452	88.7635	9/11/2006	8:55	6.9	481.0	28.8	6.0	19.1	NA	
East Palzo Creek	ATHV01B	37.6452	88.7635	9/26/2006	12:30	6.2	405.0	4.6	10.9	17.4	NA	
East Palzo Creek	ATHV01B	37.6452	88.7635	10/31/2006	13:00	6.4	498.2	23.8	8.7	12.4	NA	
East Palzo Creek	ATHV01B	37.6452	88.7635	11/15/2006	9:35	6.1	435.0	243.8	5.6	9.4	NA	

Table 2-2: Field Measurements

Watershed	Water body	Sample Site	Latitude	Longitude	Date	Time	pH (s.u.)	Conductivity (uS/cm)	Turbidity (NTU)	DO (mg/l)	Temp. °C	Depth (ft)
South Fork Sangamon River/ Lake Taylorville	South Fork Sangamon River	EO13	39.4072	89.3164	8/30/2006	18:10	7.3	719.3	7.2	6.3	20.4	NA
	South Fork Sangamon River	EO13	39.4072	89.3164	11/2/2006	16:50	7.7	528.5		6.5	6.1	NA
	South Fork Sangamon River	EO13A	39.2700	89.1880	8/30/2006	19:55	7.3	754.7	7.6	9.7	21.6	NA
	South Fork Sangamon River	EO13A	39.2700	89.1880	11/2/2006	NOT SAMPLED <i>Miscommunication between field crews caused error in sampling</i>						NA
	South Fork Sangamon River	EO13B	39.3630	89.2700	8/30/2006	19:25	7.6	1112.0	60.1	8.3	21.6	NA
	South Fork Sangamon River	EO13B	39.3630	89.2700	11/2/2006	NOT SAMPLED <i>Miscommunication between field crews caused error in sampling</i>						NA
	South Fork Sangamon River	EO13C	39.4590	89.2970	8/30/2006	18:55	7.0	56.9	96.0	3.8	21.1	NA
	South Fork Sangamon River	EO13C	39.4590	89.2970	11/2/2006	16:25	8.2	954.1		5.8	6.4	NA

THIS PAGE INTENTIONALLY LEFT BLANK

Table 2-3: Data Associated with Impairment Status

Watershed	Water body	Sample Site	Date	Time	Causes of Impairment														
					pH ⁽¹⁾	DO ⁽¹⁾	Total Mn	Sulfates	TDS	Total Boron	Dissolved Zinc ⁽⁶⁾	Dissolved Iron	Total Silver	Dissolved Copper ⁽⁶⁾	TP	Atrazine ⁽⁵⁾	Ammonia		
					s.u.	mg/L	mg/L	mg/L	mg/L	mg/L	mg/L	mg/L	mg/L	mg/L	mg/L	mg/L	ug/L	mg/L	
Bay Creek	Cedar Creek	AJF16	9/25/2006	18:00		8.9	0.25												
			11/3/2006	11:05		11.0	0.12												
		AJF16A	9/25/2006	18:15		9.4	0.23												
	Bay Creek Ditch	AJK01	9/25/2006	15:58		5.6	0.16												
			10/31/2006	8:15		8.2	0.05												
		AJK01A	10/31/2006	8:45		6.1	0.06												
Cahokia Creek/Holiday Shores Lake	Cahokia Diversion Ditch	JQ07	10/4/2006	16:35		5.3											ND		
			10/17/2006	14:15		9.4											ND		
		JQ01	10/4/2006	16:20		3.4												ND	
			10/17/2006	14:45		9.6												ND	
Cedar Creek	Big Muddy River	N99	9/7/2006	12:15		10.1		186											
			11/1/2006	9:45		7.8		75											
		N13	9/7/2006	11:15		8.1		144											
			11/1/2006	10:45		8.2		68											
	Cave Creek	NAC01	9/11/2006	11:45		7.6													
			11/1/2006	11:45		10.6													
		NAC01A	9/11/2006	11:15		4.9													
			11/1/2006	12:15		10.1													
Crab Orchard Lake	Crab Orchard Creek	ND11	9/6/2006	12:15	7.3	5.2	1.00												
			11/1/2006	14:00	7.7	10.1	0.26												
		ND12	9/6/2006	13:15	7.3		0.17												
			11/1/2006	15:00	7.7		ND												
		ND13	9/6/2006	15:00		6.0													
	11/1/2006		15:45		11.1														
	ND15	9/6/2006	16:30		6.8														
		Little Crab Orchard Creek	NDA01	9/6/2006	18:00		2.1	2.00											
	11/2/2006			8:30		8.2	0.20												
	NDA99		11/2/2006	10:30		12.3	0.03												
	Piles Fork	NDB03	9/7/2006	10:00		1.6													
11/2/2006			9:15		10.3														
NDB04		9/9/2006	7:40		3.6														
	11/2/2006	11:00		11.5															
Crooked Creek	Plum Creek	OZH-OK-A2	9/8/2006	14:00		6.8	0.65												
			10/19/2006	10:50		5.3	0.33												
			9/8/2006	16:25		8.5	0.20												
		OZH-OK-A2A	10/19/2006	11:20		9.0	0.22												
			OZH-OK-C2	9/8/2006	12:45		1.1												
				10/19/2006	10:15		2.5												
		OZH-OK-C2A	9/8/2006	17:30		4.6													
			10/19/2006	13:40		3.2													
			9/9/2006	15:00		4.1	0.30												
	OZH-OK-C3	10/19/2006	9:35		5.2	0.77													
		OJA-01	9/7/2006	17:45		3.7	0.14												
			10/19/2006	14:05		4.7	0.17												
	OJA-02	9/8/2006	11:15		3.1	0.14													
10/19/2006		14:35		3.8	0.17														

Table 2-3: Data Associated with Impairment Status

Watershed	Water body	Sample Site	Date	Time	Causes of Impairment														
					pH ⁽¹⁾	DO ⁽¹⁾	Total Mn	Sulfates	TDS	Total Boron	Dissolved Zinc ⁽⁶⁾	Dissolved Iron	Total Silver	Dissolved Copper ⁽⁶⁾	TP	Atrazine ⁽⁵⁾	Ammonia		
					s.u.	mg/L	mg/L	mg/L	mg/L	mg/L	mg/L	mg/L	mg/L	mg/L	mg/L	mg/L	ug/L	mg/L	
Little Wabash	Village Creek	CE01	9/6/2006	17:30		9.9	0.17												
			11/14/2006	8:45		10.6	0.10												
		CE02	9/6/2006	15:20		7.9	0.80												
			11/9/2006	12:55		10.7	0.11												
		CE01A	9/12/2006	17:05		5.8	0.41												
	11/9/2006		13:45		11.2	0.08													
	Johnson Creek	CCAFFA1A	9/10/2006	10:50		3.8													
			11/14/2006	10:45		12.3													
		CCA12	9/9/2006	13:05		14.2													
			11/14/2006	9:45		7.7													
		CCA13	9/9/2006	14:30		14.9													
			11/14/2006	10:15		12.8													
	CCA14A	9/9/2006	15:25		5.7														
		11/14/2006	10:25		12.5														
	Pond Creek	CCFFD1	9/9/2006	10:30		7.1													
			10/31/2006	10:10		8.2													
		CCFFD1A	11/9/2006	12:15		11.2													
		CCFFD1B	9/9/2006	11:45		8.6													
			11/9/2006	11:35		12.1													
	CCFFD1C	9/10/2006	12:10		11.9														
	Seminary Creek	CDGFLA1	9/8/2006	15:40		10.0													
			11/8/2006	14:45		14.3													
		CDGFLA1A	9/8/2006	13:45		2.6													
			11/8/2006	15:50		15.1													
		CDFGLC6	9/8/2006	12:25		6.6													
			11/8/2006	17:00		10.5													
	CDFGLC6A	9/8/2006	11:10		7.0														
	Big Muddy Creek	CJ06	9/7/2006	18:10		4.9	0.54												
			11/8/2006	11:00		11.6	0.39												
		CJ05	9/7/2006	16:45		10.5	0.04												
			11/8/2006	11:30		12.4	0.07												
	Little Muddy Creek	CJA02	9/7/2006	4:20		2.8	1.30												
			11/8/2006	12:30		9.3	0.39												
		CJA01	9/12/2006	10:20		3.4	1.30												
	11/13/2006		12:00		10.1	0.17													
	Big Muddy Diversion Ditch	CJAE01	9/7/2006	12:10		9.1													
			11/8/2006	13:05		10.8													
		CJAE01A	9/7/2006	15:45		10.3													
				11/13/2006	12:30		9.8												

Table 2-3: Data Associated with Impairment Status

Watershed	Water body	Sample Site	Date	Time	Causes of Impairment													
					pH ⁽¹⁾	DO ⁽¹⁾	Total Mn	Sulfates	TDS	Total Boron	Dissolved Zinc ⁽⁶⁾	Dissolved Iron	Total Silver	Dissolved Copper ⁽⁶⁾	TP	Atrazine ⁽⁵⁾	Ammonia	
					s.u.	mg/L	mg/L	mg/L	mg/L	mg/L	mg/L	mg/L	mg/L	mg/L	mg/L	mg/L	ug/L	mg/L
Little Wabash	Elm River	CD02A	9/12/2006	12:51		3.8												
		CD02	9/8/2006	17:45		8.1												
		CD01	4/18/2006	14:30													0.12	
			4/26/2006	11:15													0.16	
			5/1/2006	11:00													0.27	
			5/17/2006	9:30													19.00	
			5/24/2006	11:20													15.00	
			5/31/2006	11:30													8.30	
			6/7/2006	11:25													5.70	
			6/15/2006	9:50													2.80	
			6/22/2006	11:15													1.20	
			6/27/2006	9:15													4.20	
			7/5/2006	11:50													2.40	
			7/12/2006	11:30													0.92	
			7/20/2006	11:15													2.40	
	7/27/2006	11:05													2.60			
	8/1/2006	9:20													2.60			
	8/8/2006	12:20													1.60			
	Little Wabash River	C33 ⁽⁴⁾	4/18/2006	11:00													0.55	
			4/26/2006	12:15			0.35										1.10	
			5/1/2006	11:45			0.50										0.71	
			5/10/2006	12:20			0.41											
			5/17/2006	14:00													19.00	
			5/24/2006	12:15			0.38										8.10	
			5/31/2006	12:40			0.37										13.00	
			6/7/2006	12:30			0.44										6.30	
			6/15/2006	11:05													5.30	
			6/22/2006	12:00			0.76										2.60	
			6/27/2006	11:50													2.50	
			7/5/2006	13:00			0.50										1.70	
7/12/2006			12:30			0.54										1.00		
7/20/2006			12:20			0.46										2.30		
7/27/2006			12:10													0.64		
8/1/2006	10:30													0.66				
8/8/2006	13:30													0.50				

Table 2-3: Data Associated with Impairment Status

Watershed	Water body	Sample Site	Date	Time	Causes of Impairment															
					pH ⁽¹⁾	DO ⁽¹⁾	Total Mn	Sulfates	TDS	Total Boron	Dissolved Zinc ⁽⁶⁾	Dissolved Iron	Total Silver	Dissolved Copper ⁽⁶⁾	TP	Atrazine ⁽⁵⁾	Ammonia			
					s.u.	mg/L	mg/L	mg/L	mg/L	mg/L	mg/L	mg/L	mg/L	mg/L	mg/L	mg/L	ug/L	mg/L		
Little Wabash	Little Wabash River	C09	3/17/2005	8:00		14.9														
			4/19/2005	14:30		7.3														
			5/9/2005	10:30		6.7														
			6/23/2005	7:30		5.1														
			8/23/2005	13:00		4.2														
			9/27/2005	16:00		7.5														
			10/27/2005	14:00		8.7														
			12/6/2005	13:00		11.8														
			2/1/2006	12:30		9.3														
			3/15/2006	10:00		6.2														
			4/18/2006	16:00															0.27	
			4/26/2006	10:00															0.62	
			5/1/2006	9:45											ND				0.59	
			5/10/2006	10:00											ND					
			5/17/2006	11:00											ND				20.00	
			5/24/2006	9:45											ND				6.30	
			5/31/2006	10:20											ND				24.00	
			6/7/2006	10:15											ND				4.20	
			6/15/2006	8:50											ND				1.80	
			6/22/2006	10:05											ND				1.20	
			6/27/2006	10:40											ND				1.50	
			7/5/2006	10:30											ND				1.20	
			7/12/2006	10:30											ND				0.96	
			7/20/2006	10:00											ND				1.60	
7/27/2006	10:00											ND				0.72				
8/1/2006	8:30											ND				0.63				
8/8/2006	11:05											ND				0.40				
8/18/2006	16:00											ND								
Mary's River/North Fork Cox Creek	North Fork Cox Creek	IIHA31	9/9/2006	17:10			1610	3110												
			10/18/2006	14:45			1830	2830												
		IIHA01	9/9/2006	17:40			1850	3090												
			10/18/2006	14:25			1630	2540												
		IIHA-STE1	9/9/2006	15:40				3090												
			10/18/2006	13:40				1340												
	IIHA-STC1	9/9/2006	16:15				2530													
		10/18/2006	14:00				1400													
	Maxwell Creek	IIKSPC1	9/7/2006	15:30		2.0														
			10/17/2006	8:20		20.2														
			9/7/2006	15:00		2.6														
	Randolph County Lake	RIB-1 ⁽³⁾	9/9/2006	12:00														0.04		
			10/18/2006	10:45														0.130		
		RIB-2 ⁽³⁾	9/9/2006	14:00														0.04		
			10/18/2006	12:05														0.053		
		RIB-3 ⁽³⁾	9/9/2006	13:00														0.04		
10/18/2006			11:15														0.100			

Table 2-3: Data Associated with Impairment Status

Watershed	Water body	Sample Site	Date	Time	Causes of Impairment													
					pH ⁽¹⁾	DO ⁽¹⁾	Total Mn	Sulfates	TDS	Total Boron	Dissolved Zinc ⁽⁶⁾	Dissolved Iron	Total Silver	Dissolved Copper ⁽⁶⁾	TP	Atrazine ⁽⁵⁾	Ammonia	
					s.u.	mg/L	mg/L	mg/L	mg/L	mg/L	mg/L	mg/L	mg/L	mg/L	mg/L	mg/L	ug/L	mg/L
Sangamon River/ Lake Decatur	Owl Creek	EZV01	8/30/2006	12:50		8.5												
			11/2/2006	9:25		12.2												
		EZVA1	8/30/2006	11:05		6.5												
			11/2/2006	10:33		11.8												
		EZVE1	8/30/2006	10:45		11.1												
			11/2/2006	12:59		12.5												
EZVC1	8/30/2006	10:25		5.0														
	11/2/2006	12:20		11.7														
Shoal Creek	Shoal Creek	OI05	9/1/2006	12:35		9.1												
			10/17/2006	11:30		8.5												
		OI05B	9/1/2006	14:20		10.8												
			10/17/2006	11:15		8.7												
	OI05C	9/1/2006	15:40		10.2													
		10/16/2006	10:30		9.4													
	Locust Fork	OIC01	10/19/2006	12:20		3.8	0.18											
		OIC02	8/31/2006	17:50		9.4	0.35											
				10/17/2006	13:00		5.2	0.08										
	Cattle Creek	OIP10	10/17/2006	12:05		2.0				928 ⁽²⁾				0.021				5.8
South Fork Saline River/ Lake of Egypt	Briers Creek	ATHS01	9/11/2006	11:30	7.6	9.1	0.65	1250	1960		0.020	0.310	ND					
			9/27/2006	9:00	7.3	10.2	2.00	951	1490		0.022	ND	ND					
			10//2006	11:30							ND	ND	ND					
			10/30/2006	16:30			1.50	656	1120		0.035	ND	ND					
		ATHS01A	11/15/2006	10:25			1.40	281	469		0.028	1.10	ND					
			9/27/2006	11:30	7.5	9.7	0.10	294	678		ND	1.10	ND					
			10/4/2006	10:50							ND	ND	ND					
			11/2/2006	12:00	8.0	8.5	0.11	219	597		0.012	ND	ND					
		ATHS01B	11/15/2006	11:10	6.8	5.4	0.12	65	213		ND	1.40	ND					
			9/13/2006	10:40			0.18	143	418			ND	ND	ND				
			9/27/2006	10:35	6.7	9.7	0.17	196	414		ND	ND	ND					
			10/4/2006	11:05							0.013	ND	ND					
		ATHS01C	11/2/2006	12:20	7.4	9.9	0.22	373	608		0.018	ND	ND					
			11/15/2006	11:30	6.8	4.0						2.10	ND					
			9/11/2006	12:55			8.70	1290	2150			5.00	ND					
			9/27/2006	9:30	7.0	9.8	4.10	1100	1660		ND	0.78	ND					
		ATHS01C	10/4/2006	11:20							ND	2.20	ND					
			10/31/2006	14:30	7.4	9.4	1.90	691	1190		ND	0.17	ND					
11/15/2006	10:45		7.0	8.8	0.93	338	667		ND	0.470	ND							

Table 2-3: Data Associated with Impairment Status

Watershed	Water body	Sample Site	Date	Time	Causes of Impairment														
					pH ⁽¹⁾	DO ⁽¹⁾	Total Mn	Sulfates	TDS	Total Boron	Dissolved Zinc ⁽⁶⁾	Dissolved Iron	Total Silver	Dissolved Copper ⁽⁶⁾	TP	Atrazine ⁽⁵⁾	Ammonia		
					s.u.	mg/L	mg/L	mg/L	mg/L	mg/L	mg/L	mg/L	mg/L	mg/L	mg/L	mg/L	ug/L	mg/L	
South Fork Saline River/ Lake of Egypt	East Palzo Creek	ATHV01A	9/11/2006	10:40	6.9	6.7	1.40		1560			ND							
			10/31/2006	13:40	6.5	7.6	1.80		375			0.160		ND					
			11/15/2006	10:00	6.3	5.1	0.09		211			2.60		ND					
		ATHV01	9/11/2006	10:40	6.9	6.7	0.38		262			ND							
			10/4/2006	12:30								0.13		ND					
			10/31/2006	13:40	6.5	7.6	1.80		375			0.16		ND					
			11/15/2006	10:00	6.3	5.1	2.10		324			0.340		ND					
			9/11/2006	8:55	6.9	6.0	0.41		388			ND							
			9/26/2006	12:30	6.2	10.9	1.00		323			ND			ND				
			10/4/2006	11:50								ND			ND				
	10/31/2006	13:00	6.4	8.7	1.60		341			ND			ND						
	11/15/2006	9:35	6.1	5.6	1.60		225			0.100			ND						
	South Fork Saline River	ATHLEC2	9/26/2006	9:45		9.4													
			10/31/2006	12:00		9.6													
ATH08		9/26/2006	10:20		8.7														
		10/31/2006	11:15		8.8														
South Fork Sangamon River/ Lake Taylorville	South Fork Sangamon River	EO13A	8/30/2006	19:55		9.7	0.61			0.05									
		EO13	8/30/2006	18:10		6.3	0.49			0.20									
			11/2/2006	16:50		6.5	0.33			0.08									
		EO13B	8/30/2006	19:25		8.3	1.18			0.20									
		EO13C	8/30/2006	18:55		3.8	5.49			0.27									
			11/2/2006	16:25		5.8	0.38			0.13									
Shaded cells indicate exceedances of the applicable water quality standard																			
1 pH and DO values in this table represent field parameters sampled using the In-Site 9500 Profiler. Continuous DO and pH data are available in Appendix D.																			
2 Value shown is for conductivity. TDS standard corresponds to 1667 uS/cm specific conductance																			
3 Values shown were collected at one-foot depth.																			
4 Segment C33 is a source of public water. Therefore the applicable manganese standard is 150 ug/L.																			
5 Chronic criteria for atrazine is 9 ug/L and a single exceedance of this value indicates a potential cause of impairment																			
6 Corresponding hardness values were used to calculate standards. Analytical data can be found in Appendix C.																			

Section 3

Quality Assurance Review

A review was conducted to assess the quality and usability of data generated from Stage 2 work activities and to review compliance with the original sampling plan and objectives developed for the QAPP. Field and laboratory methods were deemed in accordance with the QAPP. Minor deviations from the original plan occurred and all are discussed below.

3.1 Deviations from original Sampling Plan (QAPP)

The following issues and/or concerns developed during the sampling events:

- Sampling during the week of September 25th followed a heavy precipitation event which resulted in high stream flows and flooding at Bay Creek Ditch segment AJK01A and East Palzo Creek segment ATHV01.
- In-field filtering was not performed for dissolved phosphorus or dissolved metal samples. Illinois EPA requested additional information on this procedure. CDM along with ARDL, Inc drafted text for Illinois EPA to validate this sampling practice. Total versus dissolved samples are discussed further in section 3.2.2.
- All locations on Chicken Creek (OIO09) were dry during both sample periods; therefore no samples were collected for this segment.
- The following sites had no water during either sampling event: Maxwell Creek IIKSPA1 and IIKSPE1A, and Cattle Creek OIP10A. Alternate locations were not found.
- Access was not available to the following sites during either sampling event: Shoal Creek OIO5A, South Fork Saline River sites ATH14 and ATHLEC1. Alternate locations were not found.
- Site EZVA1 on Owl Creek was moved from the location proposed in the QAPP to the intersection of Owl Creek and County Road 3100 due to better stream flow.
- Only one round of sampling was conducted at the following sites due to access or water volume issues (refer to Table 2-2 for specific dates and issues): Locust Fork OIC01, Cattle Creek OIP10, Crab Orchard Creek ND15, Little Crab Orchard Creek NDA99, Pond Creek CCFD1A, East Palzo Creek ATHV01 and ATHV01A, and Bay Creek Ditch AJK01A.
- Due to field crew error only one round of sampling was conducted at South Fork Sangamon River EO13A and EO13B and Elm River locations CD02 and CD02A.

3.2 Data Verification and Validation

A data quality review was performed on all laboratory data. The review consisted of an evaluation of laboratory QC and field QC samples. Laboratory QC included an evaluation of method blanks, matrix spikes, matrix spike duplicates, laboratory control samples and holding times. Field QC included an evaluation of field duplicates. No decontamination rinsate blanks were collected.

No laboratory violation resulted in the qualification of CDM collected data. While some matrix spikes had percent recoveries outside of the established limits, all other QC associated with the samples were acceptable. When a matrix spike was reported outside of the control limits, the laboratory control samples had percent recoveries within the established control limits, indicating a matrix effect on the sample analysis and no need to qualify the data. All samples were analyzed within the control limits.

An evaluation of the phosphorus data (total versus dissolved) was performed to determine the effects of filtering the samples immediately versus waiting up to 48 to 64 hours. All samples were received by the laboratories on ice and at 4⁰C (+/-). A total of 161 samples have been analyzed for both total and dissolved phosphorus by method 365.2. Of the 161 samples, a total of 10 samples sets had a phosphorus concentration of greater than 1 mg/L (100 times higher than the reporting limit and considered significant when controlling based on RPDs). One of these samples had relative percent difference (RPD) between the total and dissolved fraction of the sample of greater than 100. Precision values of less than 25 % RPD are considered acceptable for sample results reported significantly above the reporting limit. Sample EO13C had total phosphorus measured at 2.09 mg/L and dissolved phosphorus measured at 0.52 mg/L. The TSS measured in this sample was 159 mg/L. The suspended solids contained in this sample may have absorbed the available phosphorus, but all other results in samples with phosphorus concentrations above 1mg/L show that this reaction is not taking place. Sampling or analytical variations may explain the elevated RPD between the sample and the duplicate. Total phosphorus and dissolved phosphorus results for samples with phosphorus concentrations above 1 mg/L are not significantly different.

Looking at all other results, there does not appear to be a correlation between the difference of total and dissolved phosphorus and the TSS concentration. Suspended solids absorbing dissolved phosphorus would be the likely mechanism for lowering the dissolved phosphorus concentrations. Based on the lack of this correlation, dissolved phosphorus concentration would not be significantly different if the samples were filtered immediately versus filtering at the laboratory 48-hours after collection.

Finally, field and laboratory quality control data were collected to assess bias associated between field and laboratory methods. Positive sample results and relative percent difference (RPD) are presented in Table 3-1.

3.3 Data Quality Objectives

The data generated during the Stage 2 investigation conformed to the data quality objectives established in the QAPP. A completeness criterion of 90% was established and easily achieved. No data have been qualified that were collected by CDM personnel and analyzed by ARDL, Inc or Prairie Analytical laboratories. Data qualifiers were applied to some of the data collected by Illinois EPA

personnel. All qualifiers are included with the laboratory data contained in Appendix C.

Table 3-1: Duplicate Pair Sample Results

SampleLocation	Parameter	Result	Units	Collection Date	RPD(%)
AJK01-DUP	Solids, total suspended	24.2	MG/L	9/25/2006	
AJK01	Solids, total suspended	25	MG/L	9/25/2006	3.252033
ATHS01A-DUP	Hardness (CA/MG)	435.1	MG CACO3/L	11/2/2006	
ATHS01A	Hardness (CA/MG)	445	MG CACO3/L	11/2/2006	2.249744
ATHS01A-DUP	Solids, total dissolved	604	MG/L	11/2/2006	
ATHS01A	Solids, total dissolved	597	MG/L	11/2/2006	-1.1657
ATHS01A-DUP	Chloride	5.13	MG/L	9/27/2006	
ATHS01A	Chloride	5.1	MG/L	9/27/2006	-0.64556
ATHS01A-DUP	Solids, total dissolved	675	MG/L	9/27/2006	
ATHS01A	Solids, total dissolved	678	MG/L	9/27/2006	0.443459
ATHS01A-DUP	Sulfate	290.63	MG/L	9/27/2006	
ATHS01A	Sulfate	294	MG/L	9/27/2006	1.154242
ATHS01C-DUP	Chloride	5.38	MG/L	9/11/2006	
ATHS01C	Chloride	5.4	MG/L	9/11/2006	0.388903
ATHS01C-DUP	Sulfate	1297.83	MG/L	9/11/2006	
ATHS01C	Sulfate	1290	MG/L	9/11/2006	-0.60514
ATHS01-FIELDDUP	Alkalinity	113	MG/L	10/30/2006	
ATHS01	Alkalinity	108	MG/L	10/30/2006	-4.52489
ATHS01-FIELDDUP	Chloride	4.9	MG/L	10/30/2006	
ATHS01	Chloride	4.9	MG/L	10/30/2006	0
ATHS01-FIELDDUP	Hardness (CA/MG)	673	MG CACO3/L	10/30/2006	
ATHS01	Hardness (CA/MG)	668	MG CACO3/L	10/30/2006	-0.74571
ATHS01-FIELDDUP	Iron	68200	MG/KG	10/30/2006	
ATHS01	Iron	93800	MG/KG	10/30/2006	31.60494
ATHS01-FIELDDUP	Manganese	1130	MG/KG	10/30/2006	
ATHS01	Manganese	1480	MG/KG	10/30/2006	26.81992
ATHS01-FIELDDUP	Manganese	1.5	MG/L	10/30/2006	
ATHS01	Manganese	1.5	MG/L	10/30/2006	0
ATHS01-FIELDDUP	Nitrate-Nitrite	0.06	MG/L	10/30/2006	
ATHS01	Nitrate-Nitrite	0.06	MG/L	10/30/2006	-11.9658
ATHS01-FIELDDUP	Phosphorus, diss	0.05	MG/L	10/30/2006	
ATHS01	Phosphorus, diss	0.05	MG/L	10/30/2006	8.163265
ATHS01-FIELDDUP	Phosphorus, total	0.04	MG/L	10/30/2006	
ATHS01	Phosphorus, total	0.03	MG/L	10/30/2006	-26.8657
ATHS01-FIELDDUP	Solids, total	69.7	%	10/30/2006	
ATHS01	Solids, total	74.5	%	10/30/2006	6.65742
ATHS01-FIELDDUP	Solids, total dissolved	1040	MG/L	10/30/2006	
ATHS01	Solids, total dissolved	1070	MG/L	10/30/2006	2.843602
ATHS01-FIELDDUP	Solids, total suspended	4.3	MG/L	10/30/2006	
ATHS01	Solids, total suspended	5.6	MG/L	10/30/2006	26.26263
ATHS01-FIELDDUP	Sulfate	662	MG/L	10/30/2006	
ATHS01	Sulfate	604	MG/L	10/30/2006	-9.16272
ATHS01-FIELDDUP	Zinc	106	MG/KG	10/30/2006	
ATHS01	Zinc	116	MG/KG	10/30/2006	9.009009
ATHS01-FIELDDUP	Zinc, diss	0.02	MG/L	10/30/2006	
ATHS01	Zinc, diss	0.03	MG/L	10/30/2006	8.333333
ATHS01-DUP	Alkalinity	60.9	MG/L	11/15/2006	
ATHS01	Alkalinity	56.8	MG/L	11/15/2006	-6.96686
ATHS01-DUP	Hardness (CA/MG)	340.14	MG CACO3/L	11/15/2006	
ATHS01	Hardness (CA/MG)	337	MG CACO3/L	11/15/2006	-0.92743
ATHS01-DUP	Solids, total dissolved	481	MG/L	11/15/2006	

Table 3-1: Duplicate Pair Sample Results (continued)

SampleLocation	Parameter	Result	Units	Collection Date	RPD(%)
ATHS01	Solids, total suspended	151	MG/L	11/15/2006	-104.43
ATHS01-DUP	Hardness (CA/MG)	1035.17	MG CaCO3/L	9/27/2006	
ATHS01	Hardness (CA/MG)	1030	MG CaCO3/L	9/27/2006	-0.50069
ATHV01B-DUP	Alkalinity	15.3	MG/L	9/26/2006	
ATHV01B	Alkalinity	15.3	MG/L	9/26/2006	0
ATHV01B-DUP	Solids, total	72.5	%	9/26/2006	
ATHV01B	Solids, total	71.9	%	9/26/2006	-0.83102
CCFFD1-DUP	Chlorophyll	5.5	MG/CU.M.	9/9/2006	
CCFFD1	Chlorophyll	5	MG/CU.M.	9/9/2006	-9.52381
CE01A-DUP	Solids, total suspended	134	MG/L	9/12/2006	
CE01A	Solids, total suspended	137	MG/L	9/12/2006	2.214022
CJA02-DUP	Biological Oxygen Demand	4	MG/L	11/8/2006	
CJA02	Biological Oxygen Demand	3.7	MG/L	11/8/2006	-7.79221
EO13-DUP	Biological Oxygen Demand	6.3	MG/L	11/2/2006	
EO13	Biological Oxygen Demand	6.3	MG/L	11/2/2006	0
EO13-DUP	Solids, total suspended	8.4	MG/L	11/2/2006	
EO13	Solids, total suspended	7.6	MG/L	11/2/2006	-10
IIAA01-DUP	Chloride	21.71	MG/L	9/9/2006	
IIAA01	Chloride	21.7	MG/L	9/9/2006	-0.0258
IIAA01-DUP	Sulfate	1832.11	MG/L	9/9/2006	
IIAA01	Sulfate	1850	MG/L	9/9/2006	0.971725
IIHA01-DUP	Chloride	21.71	MG/L	9/9/2006	
IIHA01	Chloride	21.7	MG/L	9/9/2006	-0.0258
IIHA01-DUP	Sulfate	1832.11	MG/L	9/9/2006	
IIHA01	Sulfate	1850	MG/L	9/9/2006	0.971725
IIHA31-DUP	Hardness (CA/MG)	1290.87	MG CaCO3/L	9/9/2006	
IIHA31	Hardness (CA/MG)	1300	MG CaCO3/L	9/9/2006	0.704783
IIHA31-DUP	Hardness (CA/MG)	1306.27	MG CaCO3/L	10/18/2006	
IIHA31	Hardness (CA/MG)	1280	MG CaCO3/L	10/18/2006	-2.0315
IIHA31-DUP	Chloride	19.5	MG/L	10/18/2006	
IIHA31	Chloride	19.4	MG/L	10/18/2006	-0.51363
IIHA31-DUP	Solids, total dissolved	2850	MG/L	10/18/2006	
IIHA31	Solids, total dissolved	2830	MG/L	10/18/2006	-0.70423
IIHA31-DUP	Sulfate	1783.35	MG/L	10/18/2006	
IIHA31	Sulfate	1830	MG/L	10/18/2006	2.582091
IIHA-STE1-DUP	Solids, total dissolved	3100	MG/L	9/9/2006	
IIHA-STE1	Solids, total dissolved	3090	MG/L	9/9/2006	-0.3231
IIKSPC3A-DUP	Biological Oxygen Demand	11	MG/L	9/7/2006	
IIKSPC3A	Biological Oxygen Demand	11	MG/L	9/7/2006	0
JQ01-DUP	Chlorophyll	11.8	MG/CU.M.	8/31/2006	
JQ-01	Chlorophyll	13.2	MG/CU.M.	8/31/2006	11.2
JQ01-DUP	Hardness (CA/MG)	221.3	MG CaCO3/L	8/31/2006	
JQ-01	Hardness (CA/MG)	221	MG CaCO3/L	8/31/2006	-0.13565
ND11-DUP	Solids, total suspended	16.2	MG/L	11/1/2006	
ND11	Solids, total suspended	15	MG/L	11/1/2006	-7.69231
ND11-DUP	Alkalinity	90.2	MG/L	9/6/2006	
ND11	Alkalinity	90.2	MG/L	9/6/2006	0
NDA01-DUP	Solids, total suspended	18.2	MG/L	9/6/2006	
NDA01	Solids, total suspended	16.6	MG/L	9/6/2006	-9.1954
NDB04-DUP	Chlorophyll	26.9	MG/CU.M.	11/2/2006	
NDB04	Chlorophyll	25.7	MG/CU.M.	11/2/2006	-4.56274
OI05C-DUP	Biological Oxygen Demand	4.6	MG/L	9/1/2006	
OI05C	Biological Oxygen Demand	5.1	MG/L	9/1/2006	10.30928
OIC02-DUP	Solids, total suspended	14	MG/L	8/31/2006	
OIC02	Solids, total suspended	13.7	MG/L	8/31/2006	-2.16606
OIC02-DUP	Solids, total suspended	18.5	MG/L	10/17/2006	

Table 3-1: Duplicate Pair Sample Results (continued)

SampleLocation	Parameter	Result	Units	Collection Date	RPD(%)
OIC02	Solids, total suspended	16.8	MG/L	10/17/2006	-9.63173
OIP10-DUP	Hardness (CA/MG)	278.52	MG CaCO3/L	10/17/2006	
OIP10	Hardness (CA/MG)	286	MG CaCO3/L	10/17/2006	2.650039
OZH-OK-A2A-DUP	Chlorophyll	155.4	MG/CU.M.	9/8/2006	
OZH-OK-A2A	Chlorophyll	126	MG/CU.M.	9/8/2006	-20.8955

THIS PAGE INTENTIONALLY LEFT BLANK

Section 4

Conclusions

Data collected during Stage 2 have been deemed adequate and usable for Stage 3 TMDL development (see discussion in Section 3). Table 4-1 contains information for each segment sampled during Stage 2 with regards to its impairment status. The table contains information on the number of historic samples available prior to Stage 2 data collection, the number of historic violations as well as the date of the last recorded violation. The intention of this table is to assist any future determination on the impairment status of the Stage 2 stream segments.

THIS PAGE INTENTIONALLY LEFT BLANK

Table 4-1: Impairment Status

Watershed	Stream Name	Segment	Parameter of Concern	Historic Data Count	Number of Historic Violations	Date of Last Recorded Violation	Stage 2 Data Count	Number of Violations	Suggested Status
Bay Creek	Cedar Creek	AJF16	Dissolved Oxygen	1	1	2000	Continuous	0	Delist
			Manganese	1	0	-	4	0	Delist
	Bay Creek Ditch	AJK01	Dissolved Oxygen	3	3	1987	Continuous	Multiple	Impaired
			Manganese	3	3	1987	3	0	Delist
Cahokia Creek/ Holiday Shores Lake	Cahokia Diversion Ditch	JQ07	Dissolved Oxygen	147	130	2005	Continuous	Multiple	Impaired
			Copper	5	1	1998	4	0	Delist
Cedar Creek	Big Muddy River	N99	Dissolved Oxygen	3	1	2002	Continuous	*	Impaired
			Sulfates	3	0	-	4	0	Delist
	Cave Creek	NAC01	Dissolved Oxygen	2	1	1995	Continuous	1	Impaired
Crab Orchard Lake	Crab Orchard Creek	ND11	Dissolved Oxygen	2	1	2000	Continuous	Multiple	Impaired
			Manganese	2	2	2000	2	0	Delist
			pH	3	2	2004	Continuous	Multiple	Impaired
	Crab Orchard Creek	ND12	pH	3	1	2004	Continuous	0	Delist
			Manganese	2	1	2000	2	0	Delist
	Crab Orchard Creek	ND13	Dissolved Oxygen	4	4	2000	Continuous	Multiple	Impaired
	Little Crab Orchard Creek	NDA01	Dissolved Oxygen	2	1	1995	Continuous	Multiple	Impaired
			Manganese	2	1	1995	3	1	Impaired
Piles Fork	NDB03	Dissolved Oxygen	2	1	1995	Continuous	Multiple	Impaired	
Crooked Creek	Plum Creek	OZH-OK-A2	Dissolved Oxygen	1	1	2002	Continuous	Multiple	Impaired
			Manganese	1	1	2002	4	0	Delist
	Plum Creek	OZH-OK-C2	Dissolved Oxygen	1	1	2002	Continuous	Multiple	Impaired
	Plum Creek	OZH-OK-C3	Dissolved Oxygen	1	1	2002	Continuous	Multiple	Impaired
			Manganese	1	1	2002	2	0	Delist
	Little Crooked Creek	OJA-01	Dissolved Oxygen	5	4	2002	Continuous	Multiple	Impaired
			Manganese	5	2	2002	4	0	Delist

Table 4-1: Impairment Status

Watershed	Stream Name	Segment	Parameter of Concern	Historic Data Count	Number of Historic Violations	Date of Last Recorded Violation	Stage 2 Data Count	Number of Violations	Suggested Status
Little Wabash	Little Wabash River	C09	Dissolved Oxygen	43	7	2003	Continuous	Multiple	Impaired
			Silver	43	1	2002	18	0	Delist
			Atrazine	2	1	1991	16	2	Impaired
		C33	Dissolved Oxygen	5	3	2002	Continuous	Multiple	Impaired
			Manganese	5	5	2002	10	10	Impaired
	Atrazine		NA	NA	NA	16	2	Impaired	
	Village Creek	CE01	Dissolved Oxygen	1	0	NA	Continuous	Multiple	Impaired
			Manganese	1	1	2002	6	0	Delist
	Johnson Creek	CCAFFA1	Dissolved Oxygen	1	1	1997	Continuous	Multiple	Impaired
	Pond Creek	CCFFD1	Dissolved Oxygen	1	1	1997	Continuous	Multiple	Impaired
	Elm River	CD01	Atrazine	8	3	2002	16	2	Impaired
		CD02	Dissolved Oxygen	3	2	2003	Continuous	Multiple	Impaired
	Seminary Creek	CDGFLA1	Dissolved Oxygen	1	1	1998	Continuous	Multiple	Impaired
	Seminary Creek	CDFGLC6	Dissolved Oxygen	1	1	1998	Continuous	Multiple	Impaired
	Big Muddy Creek	CJ06	Dissolved Oxygen	3	1	2002	Continuous	Multiple	Impaired
Manganese			2	1	2002	6	0	Delist	
Little Muddy Creek	CJA02	Dissolved Oxygen	4	3	2002	Continuous	Multiple	Impaired	
		Manganese	4	3	2002	4	2	Impaired	
Big Muddy Diversion Ditch	CJAE01	Dissolved Oxygen	1	0	2000	Continuous	Multiple	Impaired	
Mary's River/ North Fork Cox Creek	North Fork Cox Creek	IIHA31	Sulfates	2	2	1995	4	4	Impaired
			TDS	2	2	1995	4	4	Impaired
	North Fork Cox Creek	IIHA-STC1	TDS	1	1	1995	4	2	Impaired
	Maxwell Creek	IIKSPC1A	Dissolved Oxygen	2	2	19999	Continuous	Multiple	Impaired
	Randolph County Lake	RIB	Total Phosphorus	11	3	1993	6	2	Impaired
Sangamon River/ Lake Decatur	Owl Creek	EZV	Dissolved Oxygen	3	1	1998	Continuous	Multiple	Impaired

Table 4-1: Impairment Status

Watershed	Stream Name	Segment	Parameter of Concern	Historic Data Count	Number of Historic Violations	Date of Last Recorded Violation	Stage 2 Data Count	Number of Violations	Suggested Status
Shoal Creek	Shoal Creek	OIO5	Dissolved Oxygen	3	1	2002	Continuous	0	Delist
	Locust Fork	OIC01	Dissolved Oxygen	3	1	1991	Continuous	Multiple	Impaired
			Manganese	3	1	1991	2	0	Delist
	Chicken Creek	OIO09	Dissolved Oxygen	2	1	1991	0	0	No Water
	Cattle Creek	OIP10	Dissolved Oxygen	3	2	1991	Continuous	Multiple	Impaired
			Ammonia	3	1	1991	1	0	Delist
			TDS	3	1	1991	1	0	Delist
South Fork Saline River/ Lake of Egypt	Briers Creek	ATHS01	Zinc	2	2	1993	13	0	Delist
			Iron	3	3	1993	16	3	Impaired
			Manganese	3	3	1993	8	4	Impaired
			Silver	3	1	1993	12	0	Delist
			Sulfates	3	3	1993	16	6	Impaired
			TDS	2	1	1993	16	9	Impaired
			pH	3	3	1993	Continuous	0	Delist
			Dissolved Oxygen	2	1	1993	Continuous	1	Impaired
	East Palzo Creek	ATHV01	Copper	3	2	1993	5	0	Delist
			Iron	3	3	1993	7	1	Impaired
			Manganese	3	3	1993	7	3	Impaired
			TDS	0		-	7	1	Impaired
			pH	3	3	1993	Continuous	Multiple	Impaired
	South Fork Saline River	ATH14	Dissolved Oxygen	8	1	2000	Continuous	0	Delist
	South Fork Sangamon/ Lake Taylorville	South Fork Sangamon River	EO13	Dissolved Oxygen	1	1	1989	Continuous	Multiple
Boron				1	1	1989	6	0	Delist
Manganese				1	1	1989	6	2	Impaired

* Continuous data did not violate the 5.0 mg/L instantaneous DO standard, however, continuous data collected at site N13 experienced more than 16 hours below 6.0 mg/L in a 24 hour period