



## Where to Go for Lake Information



Lakes are complicated systems. Trying to understand how and why your lake behaves as it does—or the rules and regulations governing lake use and management—can get to be overwhelming. Fortunately, there are folks out there who can help you. The following local, state, national, and federal organizations can provide information on many aspects of lake management. Call them—they're eager to help!

### STATE GOVERNMENT

---

#### **Illinois Environmental Protection Agency (EPA)**

Illinois EPA's mission is to safeguard environmental quality, consistent with the social and economic needs of the state, so as to protect health, welfare, property, and the quality of life. To do this, the Agency is organized into three bureaus (Air, Land, and Water) and several divisions. Those involved in lake management issues are highlighted below.

P.O. Box 19276, Springfield, IL 62794-9276

web address: [www.epa.state.il.us](http://www.epa.state.il.us)

Regional offices in Maywood (708/338-7900), Springfield (217/786-6892), and Marion (618/993-7200)

#### **Bureau of Water**

##### ■ **Division of Water Pollution Control (DWPC):**

DWPC's Planning Section conducts lake water quality monitoring and assessments, administers the federal and Illinois Clean Lakes Programs and the Nonpoint Source Pollution Management Program, coordinates the Ambient and Volunteer Lake Monitoring Programs, conducts information and education programs, and provides technical assistance and information on lake and watershed management. The Permits Section administers the Section 401 water quality certification program regarding dredging and filling (i.e., shoreline modification) activities.

Planning Section: 217/782-3362

Permits Section: 217/782-0610

■ **Division of Public Water Supplies (DPWS):** This division is responsible for assuring that all persons served by community water supplies receive water that is adequate in quantity and safe in quality. DPWS carries

out source water assessment and protection programs, ensures that water treatment facilities meet state and federal quality standards, and conducts permitting for chemical applications in public water supply lakes.

Permits Section: 217/782-1724

Source Water Protection Program: 217/785-4787

#### **Illinois Department of Natural Resources (DNR)**

The Illinois DNR works to conserve, preserve, and enhance the state's natural treasures, while meeting the outdoor recreation needs of its citizens. DNR is organized into numerous offices and divisions. Those with lake management ties are highlighted below.

web address: [dnr.state.il.us](http://dnr.state.il.us)

#### **Office of Resource Conservation**

■ **Division of Fisheries:** The Division of Fisheries conducts fish surveys, stocking, restoration and protection programs, education and outreach, operates four fish hatcheries, and sets fishing regulations. Fish management services are provided to all waters in the state (prioritized from state waters down to private ponds). The Division also works to improve and establish access for boating, canoeing, and other water activities.

600 N. Grand Avenue West, Springfield, IL 62701-1787; 217/782-6424

Regional offices in Sterling (815/625-2968), Spring Grove (815/675-2385), Champaign (217/333-5773), Alton (618/462-1181), and Benton (618/435-8138)

24-hour fish information: 1-800-ASK-FISH

■ **Division of Natural Heritage:** The Division of Natural Heritage manages and restores forests, prairies, and wetlands; monitors and manages animal and plant populations; and protects, restores, and manages endangered species (including aquatic plants and animals).

524 S. Second Street, Springfield, IL 62701;  
217/785-8774

### Office of Scientific Research and Analysis

■ **State Water Survey:** The Water Survey conducts research and provides information on the availability, use, and quality of the state's surface and groundwater resources. Research is organized into three divisions: atmospheric sciences, chemistry, and hydrology. An Illinois EPA-certified laboratory analyzes water samples submitted by citizens, industries, and public entities.

2204 Griffith Drive, Champaign, IL 61820;  
217/333-2210

■ **Natural History Survey:** The Natural History Survey conducts research and provides information on the diversity, life histories, growth/development, ecology, population dynamics, ecosystem properties, and management of Illinois' biotic resources. Research activities are organized into four divisions: biodiversity, economic entomology, aquatic ecology, and wildlife ecology.

607 E. Peabody Drive, Champaign, IL 61820;  
217/333-6830

■ **State Geological Survey:** The Geological Survey conducts research, prepares geologic maps, and gathers and manages the state's geological data in order to provide information to industry, government, and the public about the geology, mineral resources, and groundwater resources of the state.

615 E. Peabody Drive, Champaign, IL 61820;  
217/333-4747

### Office of Law Enforcement

Boat registration and titling information:  
217/782-2138

Boat safety courses, class location information:  
1-800/832-2599



### Office of Water Resources

The Office of Water Resources (OWR) administers regulatory programs that include construction in floodways, public waterbodies, and the shorewaters of Lake Michigan; and dam construction and operation. OWR is the lead state agency for Illinois water resources planning, navigation, floodplain management, and the National Flood Insurance Program.

524 S. Second Street, Springfield, IL 62701-1787;  
217/782-3863

*in northeastern Illinois:*

201 W. Center Court - 3rd Floor East, Schaumburg, IL  
60196-1096; 847/705-4341

### Illinois Department of Agriculture (IDOA)

The IDOA protects and promotes the state's agricultural and natural resources through services benefitting consumers, farmers, and agribusiness. IDOA regulates pesticide use (including aquatic herbicides) by registering products, certifying and licensing applicators, and investigating suspected misuse. IDOA administers programs to promote sustainable agriculture, stabilize eroding streambanks, construct soil conservation practices, and assist local soil and water conservation districts.

State Fairgrounds, P.O. Box 19281, Springfield, IL  
62794-9281; 217/782-2172

*web address:* [www.state.il.us/agr](http://www.state.il.us/agr)

Pesticide Misuse Hot Line: 1-800/641-3934

### Soil and Water Conservation Districts (SWCD)

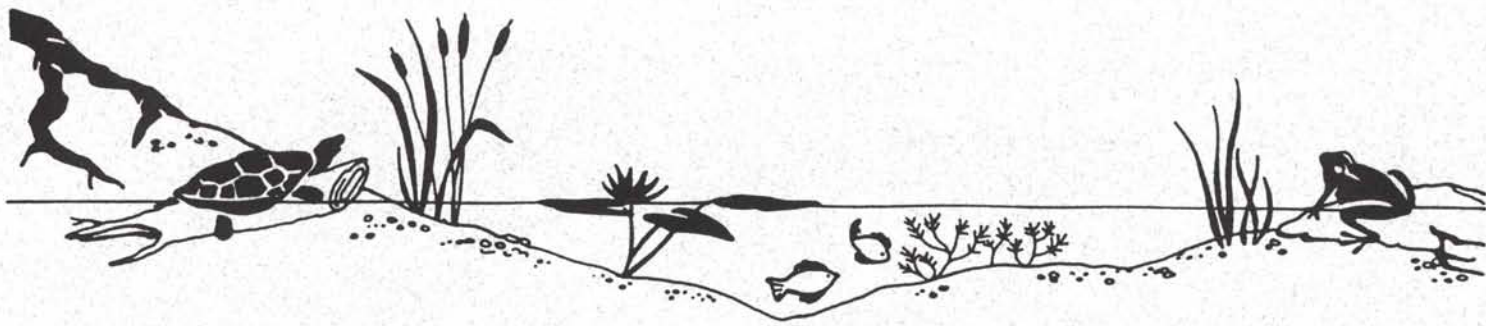
Located in nearly every county, Illinois' 98 SWCDs provide assistance to reduce erosion and sedimentation; protect water quality; control flooding; plan land use; and enhance woodland, wildlife, and recreational resources. Conservation practices are promoted through informational campaigns, educational outreach, and technical assistance. Check in your local phone book for the SWCD office nearest you.

### Illinois Department of Public Health (IDPH)

Through their Division of Environmental Health, IDPH sets the design and minimum sanitary standards for bathing beaches and swimming pools, licenses beaches and pools, conducts beach and pool safety inspections, and analyzes water samples for bacteria submitted by beach and pool operators. IDPH also permits and inspects water well construction and private sewage disposal (septic) systems, and licenses installers.

Division of Environmental Health, 525 W. Jefferson  
Street, Springfield, IL 62761; 217/782-5830

*web address:* [www.idph.state.il.us](http://www.idph.state.il.us)



## REGIONAL AND LOCAL GOVERNMENT

### **County & Regional Planning Commissions**

There are numerous county and regional planning agencies throughout Illinois. The three below have been designated by Illinois EPA as the "areawide water quality planning agency" for their respective regions.

*in Cook, DuPage, Kane, Lake, McHenry, and Will counties contact:*

#### **Northeastern Illinois Planning Commission (NIPC)**

NIPC's Natural Resources Department is involved in an array of water resource issues in northeastern Illinois. Areas of expertise include water quality and watershed management; stormwater management; development ordinances including floodplains, detention, and erosion and sediment control; lake monitoring and protection; stream and wetland protection; hydrologic and hydraulic analyses; and coordination of water resource conferences and workshops. NIPC also serves as regional coordinator for Illinois EPA's Volunteer Lake Monitoring Program.

Natural Resources Department, 222 S. Riverside Plaza, Suite 1800, Chicago, IL 60606; 312/454-0400

*web address:* [www.nipc.cog.il.us](http://www.nipc.cog.il.us)

The two other areawide planning commissions also serve as regional coordinators for Illinois EPA's Volunteer Lake Monitoring Program:

*in Bond, Clinton, Madison, Monroe, Randolph, St. Clair, and Washington counties contact:*

#### **Southwestern Illinois Planning Commission (SIPC)**

203 W. Main St., Collinsville, IL 62234-3098; 618/344-4250

*in Franklin, Jackson, Jefferson, Perry, and Williamson counties contact:*

#### **Greater Egypt Regional Planning and Development Commission (GERPDC)**

P.O. Box 3160, Carbondale, IL 62902; 618/549-3306

### **County & Municipal Health Departments**

Most Illinois counties and some municipalities have a health department with an environmental health focus including permitting and inspection of septic systems and drinking water wells. The county health departments in DuPage, Lake, McHenry, Tazewell, and Will counties also conduct bathing beach water quality monitoring and, except in Tazewell, analyze the water samples for bacteria at their own laboratory. Check your phone book for the local health department serving you.

*in Lake County contact:*

#### **Lake County Health Department (LCHD)**

The LCHD's Lakes Management Unit provides technical and educational assistance to governments, lake associations, and individuals within Lake County. Assistance includes lake management planning, baseline water quality sampling, beach monitoring, and workshops. Their newsletter *Cattail Chronicles* (free) discusses lake issues.

Lakes Management Unit, 3010 Grand Avenue, Waukegan, IL 60085; 847/360-6747

*web address:* [www.co.lake.il.us/health/env.htm](http://www.co.lake.il.us/health/env.htm)

### **Local Lake Management Authorities**

You also may want to check with your local municipality, Park District, and/or Forest Preserve District for information on lakes and associated regulations within their jurisdiction.



## FEDERAL GOVERNMENT

### **U.S. Environmental Protection Agency (EPA)**

The U.S. EPA sets and enforces federal environmental standards; conducts research on the causes, effects, and control of environmental problems; assists local governments; and conducts information and education activities on a wide array of environmental issues. The U.S. EPA also administers the federal Clean Lakes Program and the Nonpoint Source Management Program.

U.S. EPA - Region 5, Watersheds and Nonpoint Source Programs Branch, 77 W. Jackson Boulevard, Chicago, IL 60604-3507; 312/353-2308 or 1-800/621-8431

*web address:* [www.epa.gov](http://www.epa.gov)

### **U.S. Army Corps of Engineers (USACE)**

The USACE regulates navigation on the nation's major river systems and administers the Section 404 permitting program (which regulates the discharge of dredged and fill materials into U.S. waters, including lakes and wetlands). Four District offices serve Illinois:

Rock Island District, Clock Tower Building, P.O. Box 2004, Rock Island, IL 61204-2004; 309/794-5351

Chicago District, 111 North Canal, Chicago, IL 60606-7206; 312/353-6428

St. Louis District, 1222 Spruce, St. Louis, MO 63103-2833; 314/331-8575

Louisville District, 600 Martin Luther King Place, P.O. Box 59, Louisville, KY 40202-0059; 502/582-5452

*web address:* [www.usace.army.mil](http://www.usace.army.mil)

The USACE also conducts research and provides technical support and publications on numerous topics including water operations, aquatic plant control, wetlands ecology, dredging operations, and ecosystem management and restoration.

Environmental Laboratory, Waterways Experiment Station, 3909 Halls Ferry Road, Vicksburg, MS 39180-6199; 601/634-3111

*web address:* [www.wes.army.mil](http://www.wes.army.mil)

### **U.S. Coast Guard Auxiliary**

The U.S. Coast Guard Auxiliary offers boating safety, seamanship, and navigation courses. Call 1-800/336-2628 for information on classes to be held near you, or access their *web address:* 207.201.180.170

### **U.S. Department of Agriculture – Natural Resources Conservation Service (NRCS)**

NRCS provides technical assistance to farmers and ranchers in developing soil and water conservation systems, as well as assistance to urban and rural communities to reduce erosion, conserve and protect water, and solve other resource problems. Publications that relate to lake management focus on sedimentation and erosion control. A District Conservationist serves every county and can be reached at your local Soil and Water Conservation District office, or you can contact the state NRCS office:

1902 Fox Drive, Champaign, IL 61820; 217/398-5267

*web address:* [www.nrcs.usda.gov](http://www.nrcs.usda.gov)

### **U.S. Fish & Wildlife Service (USFWS)**

The USFWS (Department of the Interior) is the lead federal agency in the conservation, protection, and enhancement of fish and wildlife and their habitats. Major responsibilities include migratory birds, endangered species, freshwater and anadromous fish, wetlands, the National Wildlife Refuge system, and environmental contaminants. Technical assistance is available regarding habitat restoration, endangered species, and environmental education.

Rock Island Field Office, 4469 48th Avenue Court, Rock Island, IL 61201; 309/793-5800

Chicago Field Office, 1000 Hart Road, Suite 180, Barrington, IL 60010; 847/381-2253

Marion, Illinois Sub-Office, 8588 Route 148, Marion, IL 62959; 618/997-3344

*web address:* [www.fws.gov](http://www.fws.gov)

### **U.S. Geological Survey (USGS)**

The USGS (Department of the Interior) provides geologic, topographic, and hydrologic information through its study of water, mineral, and biological resources throughout the nation. In Illinois, work includes studying coastal erosion on Lake Michigan; collecting streamflow, groundwater level, and water quality data; monitoring river sedimentation; and determining the risk from earthquakes, landslides, and other natural hazards. Information products include maps, databases, reports, and fact sheets.

221 N. Broadway, Urbana, IL 61801; 217/344-0037

*web address:* [www.usgs.gov](http://www.usgs.gov)

The USGS's National Water Information Center also can provide referrals to appropriate sources of water information: 1-800/426-9000

## OTHER STATE AND NATIONAL ORGANIZATIONS

### **North American Lake Management Society (NALMS)**

NALMS' mission is to forge partnerships among citizens, scientists, and professionals to foster the management and protection of lakes and reservoirs for today and tomorrow. Technical assistance and information exchange is available through the quarterly magazine *LakeLine*, a technical journal, publications including *The Lake and Reservoir Restoration Guidance Manual*, and annual conferences and workshops.

P.O. Box 5443, Madison, WI 53705-2836;  
608/233-2836

web address: [www.nalms.org](http://www.nalms.org)

### **Illinois Lake Management Association (ILMA)**

The mission of ILMA is to promote the understanding and comprehensive management of lake and watershed ecosystems. Information exchange and technical assistance is available through the quarterly newsletter *Lake Waves*, publications, and annual conferences and workshops. ILMA acts in representing lake and watershed concerns to state and local governments, and is a state chapter of NALMS.

P.O. Box 20655, Springfield, IL 62708; 217/544-4562

web address: [ilma-lakes.org](http://ilma-lakes.org)

### **Conservation Technology Information Center (CTIC)**

CTIC is a non-profit, information/data transfer center that promotes environmentally and economically beneficial natural resource systems. The *Know Your Watershed* initiative offers publications and videos on building effective local watershed partnerships to protect water quality.

1220 Potter Drive, Room 170, West Lafayette, IN  
47906-1383; 765/494-9555

web address: [www.ctic.purdue.edu](http://www.ctic.purdue.edu)

### **National Sea Grant College Program**

The National Sea Grant Program is a partnership between the nation's universities and the National Oceanic and Atmospheric Administration (NOAA). It encourages the wise stewardship of the nation's marine and Great Lakes resources through research, education, outreach, and technology transfer. Sea Grant offers information on numerous topics including zebra mussels and other non-native species, fisheries management, pollutants and effects, and waterfront use and development.

Illinois-Indiana Sea Grant, Purdue University, 1159  
Forestry Building, West Lafayette, IN 47907-1159;  
765/494-3573

web address: [www.ansc.purdue.edu/il-in-sg](http://www.ansc.purdue.edu/il-in-sg)

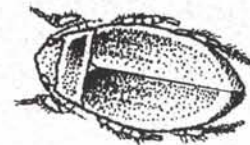
*For non-native species and Great Lakes fisheries information:*

Lake Michigan Biological Station, 400 17th Street,  
Zion, IL 60099; 847/872-0140

### **University of Illinois Cooperative Extension Service (CES)**

CES is the educational outreach arm of the University of Illinois. CES provides practical, research-based information and programs to help individuals, families, farms, businesses, and communities. Areas of assistance include agriculture, horticulture, soil conservation and environmental quality, community and leadership development, and youth development (including the 4-H program). Offices are located in most counties. Check your local phone book or access the Illinois CES web site to find the office nearest you.

web address: [www.ag.uiuc.edu](http://www.ag.uiuc.edu)



*water beetle*

**Lake Notes . . .** is a series of publications produced by the Illinois Environmental Protection Agency about issues confronting Illinois' lake resources. The objective of these publications is to provide lake and watershed residents with a greater understanding of environmental cause-and-effect relationships, and actions we all can take to protect our lakes.

Appreciation is extended to the University of Wisconsin-Extension and the Wisconsin Department of Natural Resources for illustrations from their "Water Quality Digitized Clip Art Collection."

This *Lake Notes* publication was prepared by Holly Hudson of the Northeastern Illinois Planning Commission, Chicago, Illinois.

For more information about other publications in this series and to request copies, please contact: Illinois Environmental Protection Agency, DWPC-Lake and Watershed Unit, P.O. Box 19276, Springfield, Illinois, 62794-9276; 217/782-3362.



November 1997. Permission granted to reprint with credit to the Illinois Environmental Protection Agency and the Northeastern Illinois Planning Commission.

