

State of Illinois
Rod R. Blagojevich

Illinois Environmental Protection Agency
Bureau of Water



2005 Annual Compliance Report

Annual Compliance Report, Calendar Year 2005 The Drinking Water Program: An Overview

Introduction



The United States Environmental Protection Agency (USEPA) established the Public Water System Supervision (PWSS) Program under the authority of the 1974 Safe Drinking Water Act (SDWA). Under the SDWA and the subsequent amendments, USEPA sets national limits on contaminant levels in drinking water to ensure that the water is safe for human consumption. These limits are known as Maximum Contaminant Levels (MCLs)² and Maximum Residual Disinfectant Levels (MRDL's)³. For some regulations, EPA establishes treatment techniques (TT)⁴ in lieu of an MCL to control unacceptable levels of contaminants in water. The Agency also regulates how

often public water systems (PWSs)¹ monitor their water for contaminants and report the monitoring results to the states or USEPA. Generally, the larger the population served by a water system, the larger the number of samples collected and the more frequent the monitoring and reporting (M/R)⁵ requirements. In addition, USEPA requires Public Water Systems (PWSs) to monitor for unregulated contaminants to provide data for development of future regulations. Finally, USEPA requires PWSs to notify their consumers when they have violated these regulations. The 1996 Amendments to the SDWA require consumer notification to include a clear and understandable explanation of the nature of the violation, its potential adverse health effects, steps that the PWS is undertaking to correct the violation and the possibility of using alternative water supplies during the violation.

Annual State PWS Report

The purpose of this annual compliance report is to satisfy the requirement of Section 1414(c)(3) of the 1996 Amendments to the Safe Drinking Water Act (SDWA). States with national primary

enforcement authority are to prepare, make readily available to the public, and submit to the Administrator of the USEPA by July 1 of each year, an annual report on violations occurring during the previous calendar year of national primary drinking water regulations by public water systems.

Annual Compliance Report Background

Each quarter, the Illinois Environmental Protection Agency (Illinois EPA) submits data to the Federal Safe Drinking Water Information System (SDWIS/FED), an automated database maintained by USEPA. The data submitted include, but are not limited to, PWS inventory information, the incidences of violations of Maximum Contaminant Levels, Maximum Residual Disinfectant Levels, monitoring, and treatment technique violations; and information on enforcement activity related to these violations. This report provides the numbers of violations in each of six categories:



- Maximum Contaminant Level (MCL) violations
- Maximum Residual Disinfectant Level (MRDL) violations,
- Treatment Technique (TT) requirement violations,
- Significant violations of Monitoring and Reporting (M/R) requirement violations,
- Significant violations of the Consumer Notification requirements,
- And Violations of Variances and Exemptions.

Attached to this report as Appendix A is a listing for each contaminant regulated by the SDWA, the numbers of maximum contaminant level (MCL), maximum residual disinfectant level (MRDL), treatment technique (TT) and major monitoring and reporting (M/R) violations for each compliance period during calendar year 2005, the number of violations that were returned to compliance (RTC), and the number of systems incurring violations. Appendix B and Appendix C contain a detailed listing of public water systems with MCL, MRDL, or TT violations.

Variances and Exemptions

A PWS can be granted a “variance” from a primary drinking water regulation if the characteristics of the raw water sources reasonably available to the PWS do not allow the system to meet the MCL. To obtain a variance, the system must agree to install the best available technology, treatment techniques, or other means of limiting drinking water contamination that the Administrator finds are available (taking costs into account), and the state must find that the variance will not result in an unreasonable risk to public

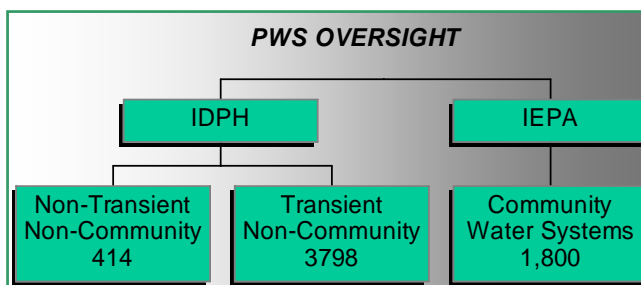


health. The variance shall be reviewed not less than every 5 years to determine if the system remains eligible for the variance. During 2005, Illinois did not grant any variances.

A water system may also petition the state for an “exemption”. An exemption is permission not to meet an MCL or a treatment technique under certain conditions for a period of time. An exemption may be granted to give a water system additional time to make complicated and expensive modifications and improvements to the water treatment process so that compliance may be achieved in the shortest period of time. During 2005, Illinois did not grant any exemptions.

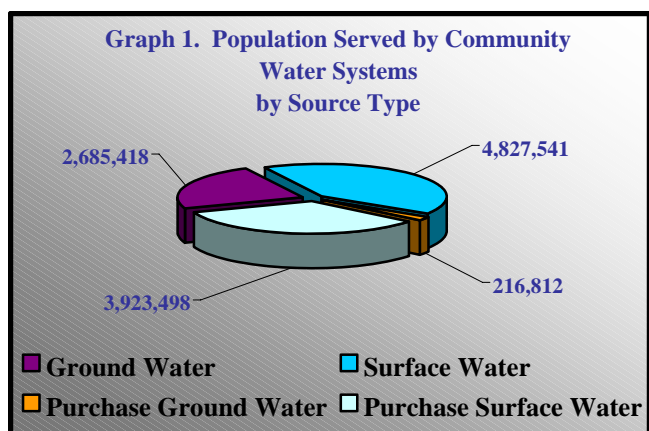
Public Water System Overview

In Illinois, oversight of PWSs is divided between the Illinois Environmental Protection Agency (Illinois EPA) and the Illinois Department of Public Health (Illinois DPH). Illinois EPA has been designated as the lead agency for primary enforcement authority and oversees the **community public water system (CWS)** program (those supplies



that serve 15 or more year around service connections or 25 or more year around residents). Illinois DPH oversees the **non-community water systems**. Non-community systems include the **non-transient, non-community public water systems (NTNC)** that serve 25 or more of the same non-residents at least 180 days out of the year and include facilities such as day care centers, schools and factories. Illinois DPH also oversees the **transient non-community (TNC) public water systems** that serve 25 or more different nonresidents at least 60 days out of the year and include facilities such as campgrounds and highway rest areas. The remainder of this report will detail the CWS supplies and then, separately, address the non-community (NTNC/TNC) supplies.

Community Public Water Supplies



As previously mentioned, the Illinois EPA oversees the **CWS** program. A CWS is a PWS that serves 25 or more people year around and/or has 15 service connections. ◀ **Graph 1** depicts the breakdown of the 1,800 community water systems within Illinois with regard to their source of water. A total of 11,653,269 persons are served by those systems; 41 percent of that population is directly served from surface water systems. Thirty-four percent of the population is served by purchased surface water, 2 percent by purchased ground water, and 23 percent by ground water systems. It

is worth noting that although only 23 percent of the population is served by ground water; ground water systems comprise almost 59 percent (1,057 of the 1,800) of the total number of

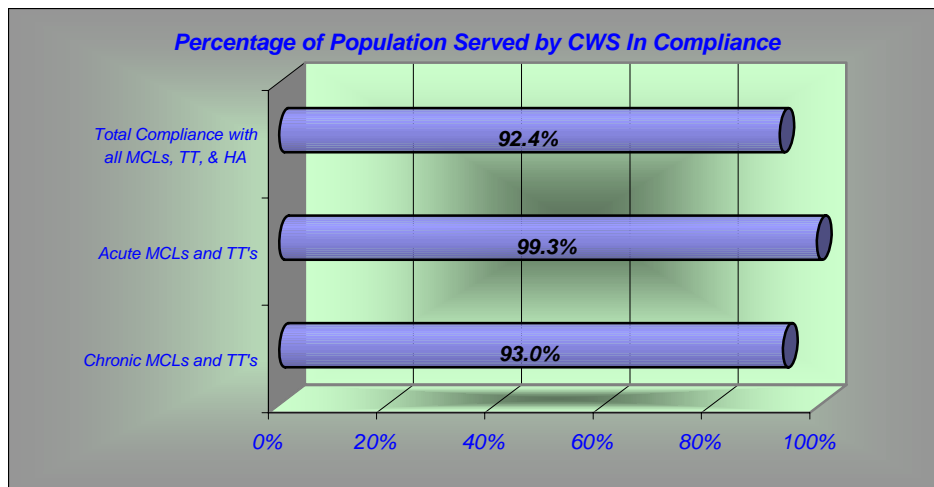
community water systems. The type of source water (ground, surface, or purchase) for a CWS will determine monitoring, treatment, and operational requirements. For example, surface water systems are required to monitor turbidity, where ground water systems (that are not under the influence of surface water) are not. This requirement will impact compliance numbers as outlined later in this report.

CWS - Environmental Indicators

The Illinois EPA Safe Drinking Water Goal is for every Illinois public water system to provide water that is consistently safe to drink. As a part of its partnership agreement with USEPA, Illinois EPA measures the progress of the drinking water program with environmental indicators consisting of the percentage of persons served by community water systems that have not incurred violations of any acute MCL, chronic MCL, acute treatment technique, chronic treatment technique or public education requirement during the year. The environmental objective of the Illinois EPA is to increase the percentage of population served by CWS that receive drinking water with no short-term (acute) or long-term (chronic) adverse health effects to over 95 percent by the year 2008. The progress towards this objective is summarized below.

CWS - Environmental Indicator Progress

Safe drinking water should be free of contaminants that have the potential to cause either short term or long-term health effects. During calendar year 2005, the percentage of persons served by Illinois CWS that have been in effect for more than three years and that were compliant with all health requirements (MCL), treatment techniques (TT), or public education was **92.4** percent. Compliance efforts will continue to focus on minimizing the frequency and duration of excursions and the development of enforceable schedules for the implementation of corrective action plans to achieve sustained compliance.



◀ Graph 2

**CWS
Compliance
Percentages**

During calendar year 2005, the percentage of persons served by Illinois CWS that were compliant with all health requirements was 92.4 percent. This compliance percentage represents over a three-percentage improvement from calendar year 1995 and reflects continued progress toward the goal of 95 percent. It is important that safe drinking water be free of contamination that has the potential to cause either short-term or long-term health effects.

CWS - Acute vs. Chronic Indicators

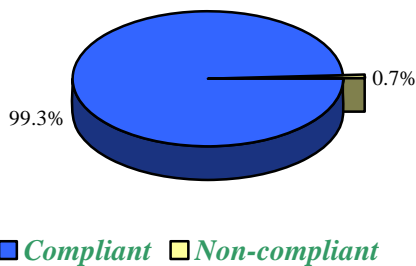
The contaminants fall into two groups according to the health effects that they cause:

ACUTE	CHRONIC
<p>Acute effects occur within hours or days of the time that a person consumes a contaminant. People can suffer acute health effects from almost any contaminant if they are exposed to extraordinarily high levels (as in the case of a spill). In drinking water, microbes, such as bacteria and viruses, are the contaminants with the greatest chance of reaching levels high enough to cause acute health effects. Most people's bodies can fight off these microbial contaminants the way they fight off germs; and these acute contaminants typically don't have permanent effects. Nonetheless, when high enough levels occur, they can make people ill, and can be dangerous or deadly for a person whose immune system is already weak due to HIV/AIDS, chemotherapy, steroid use, or another reason.</p>	<p>Chronic effects occur after people consume a contaminant at levels over EPA's safety standards for many years. USEPA develops the standards for chronic MCLs on the basis that a person may have an adverse health effect after consuming two liters of water daily over a 70-year lifetime. The drinking water contaminants that can have chronic effects are chemicals (such as disinfection by-products, solvents, and pesticides), radionuclides (such as radium), and minerals (such as arsenic). Examples of the chronic effects of drinking water contaminants are cancer, liver or kidney problems, or reproductive difficulties.</p>

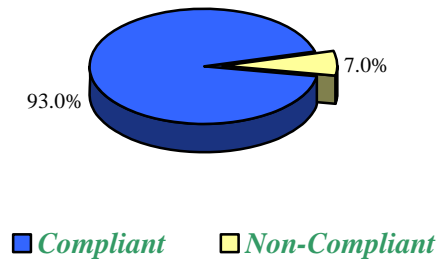
Graph 3 (below) shows that **99.3** percent of the population served by Illinois CWS received drinking water in compliance with acute (short-term) health requirements, and **93.0** percent were in compliance with chronic (long-term) health requirements. It is important to note that most non-compliance was short in duration, and the potential for health risk was minimized through prompt corrective action by the water supplies. Supplies with microbial problems (bacterial or turbidity non-compliance) are required to issue boil orders when the violation occurs. Community water systems with acute MCLs were limited to five water systems.

Acute and Chronic Requirements (2005 data)
Percent of CWS Population Served Compliant with Health Records

ACUTE



CHRONIC



CWS - Lead And Copper Compliance

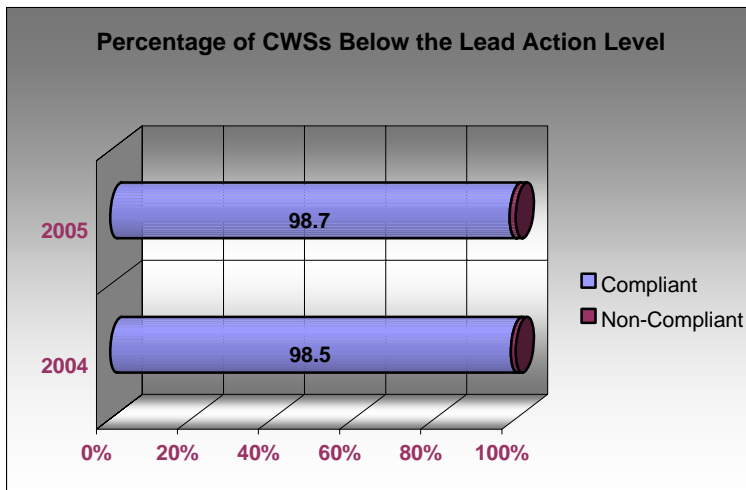
In 2005, 1,778 water supplies, or approximately **98.7** percent of community water supplies were below the lead action level. These water supplies serve **99.0** percent of the population. There were no treatment technique violations reported for the NTNC water systems overseen by the Illinois DPH.

Lead and Copper Rule Compliance



Lead and copper are regulated by a Treatment Technique that requires systems to control the corrosiveness of their water. The lead action level (15 parts per billion of lead) when exceeded in more than ten percent of the water samples collected in consumers' homes, requires the water supply to implement optimal corrosion control treatment plans or procedures which would prevent anticipated adverse health effects and ensure that lead or copper is controlled in the drinking water.

▼ **Graph 4** illustrates the Percentage of **Community** Water Systems that were below the lead action level.



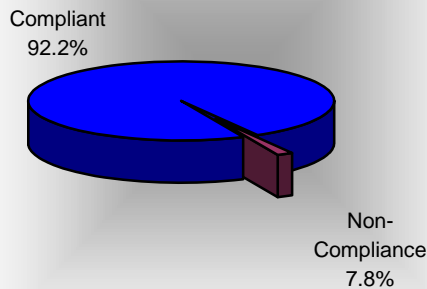
During the years 2004 to 2005, a 0.2 percent net decrease in lead action level exceedances was seen in CWS. Generally, non-compliance is for a short period of time due to the fact the treatment is adjusted to the required ranges. Roughly *99 percent* of the population served by CWS consumed water that was compliant with lead action level during 2005.

CWS - Consumer Awareness

Every community water supplier must provide an annual report (sometimes called a Consumer Confidence Report or CCR) to its customers. The report provides information on local drinking water quality, including the water's source, the contaminants found in the water, and how consumers can get involved in protecting drinking water. If the consumers have been looking for specific information about their drinking water, this annual report will provide them with the information they need.

In connection with each violation described in the previous sections, public notification is required to be issued. Public notification provides a means to protect public health, build trust with consumers through open and honest sharing of information, and establishes an ongoing, positive relationship with the community. Public notice can also be used to help consumers

Community Systems in Compliance with Consumer Notification

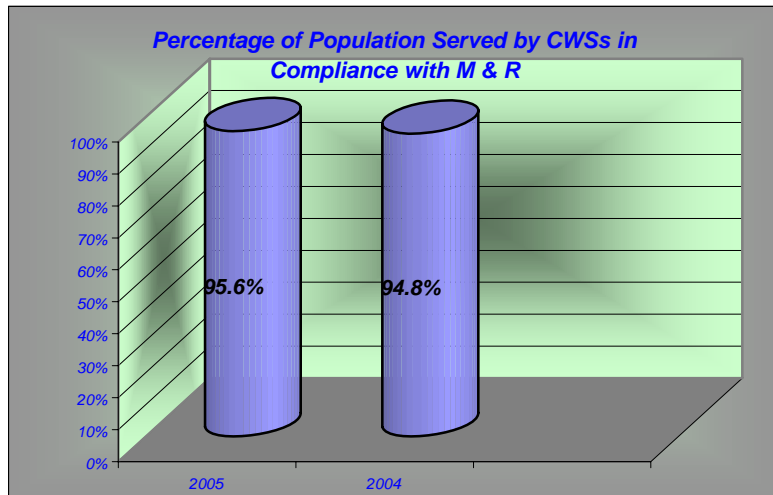


understand rate increases and support increased funding for drinking water treatment and protection. Properly done, the notices can work for the benefit of the public water supplier as well the public. In the event a problem occurs, educated consumers are more likely to understand the problem and support the actions a water utility must take. Many deadlines for public notice issuance depend upon prompt contact and discussion between the public water system and Illinois EPA. Efficient communication with prompt reporting is the cornerstone for compliance. **Graph 5 (left)** depicts the compliance rates for community water systems with regard to overall consumer notification. This includes failure to issue public notice and the CCR compliance rate.

CWS – Monitoring and Reporting (M&R)

The USEPA has established contaminant-specific minimum testing schedules for public water systems. Water systems typically monitor for bacteria, protozoa and viruses, nitrate and nitrite, volatile organic compounds (e.g., benzene), synthetic organic compounds (e.g., pesticides), inorganics (e.g., arsenic), lead and copper, and radionuclides. Although failure to monitor does not necessarily suggest safety problems, conducting the required monitoring and reporting is critical to ensure that problems will be detected.

During 2005, 87.1 percent of total community supplies were compliant with monitoring and reporting requirements. This is a 1.5 percent increase above 2004 figure. **Graph 6 (below)** summarizes the 2004 and 2005 compliance monitoring and reporting data for population served. The 2005 population served had a 0.8 percent increase over the 2004 population served.



Community Water System Monitoring Compliance Percentages –Population Served

IEPA Enforcement Strategy

The Illinois EPA has enforcement authority over community water systems in Illinois. Illinois EPA has a standardized protocol for all enforcement matters to ensure unilateral, consistent treatment of enforcement cases. For any violation outlined in the previous pages, a failure to take corrective action could result in the water system being considered for enforcement under Section 31 of the Illinois Environmental Protection Act. Enforcement normally begins with the identification of a significant unresolved violation by technical staff. Information about the violator/violations is forwarded to the Compliance Group (composed of Section Managers). If the Compliance Group determines a Violation Notice (VN) is warranted, the VN recommendation is sent to the Agency's Compliance Management Panel (CMP) for review. After review by the CMP, the Compliance Assurance Section prepares and issues the VN. After the VN is sent, the violator will have a set time period (45 days or 60 days depending on whether a meeting is requested) to respond in writing with a proposed Compliance Commitment Agreement (CCA). Enforcement activities are suspended if the proposed CCA is accepted by the Agency. If at a later point in time, the violator does not follow the CCA agreement, enforcement may resume.

If the proposed CCA is not accepted or the violator fails to respond to the VN, the case is brought before the Enforcement Decision Group (EDG, composed of senior Agency management). EDG will determine the next course of action such as recommending a case for formal enforcement, which consists of referring the water system to the State's Attorney General or the USEPA for filing with a court to direct corrective actions and which may include imposition of penalties or fines.

CWS Violation Summary Table

The following summarizes the percentage of community water systems in compliance with all aspects of the drinking water compliance program. Radionuclide MCLs comprise the largest number of violations, and consequently, cause the largest number of water systems to be out of compliance. Since the end of 2005, the number of water systems with radionuclide MCLs has been reduced to 48 from 90; a 47 percent reduction. With the effective date of the radionuclide rule in December 2003, the remaining systems out of compliance have begun construction on treatment (roughly 42 percent) or have completed construction and are waiting on a running annual average of analyses to fall below the MCL (roughly 10 percent). As these systems conclude construction, compliance numbers will improve. Those systems not making progress on reducing radium MCL levels are proceeding through the enforcement process previously outlined.

**Violations during Calendar Year 2005
State of Illinois
Community Water Systems**

Total Number of Regulated Systems	1,800
Total Number of Systems in Violation	422
Total Number of Violations	1,913

Table 1.

Rule Subtotal by Violation Type – Community Water Systems									
Violation Category	MCLs			Treatment Techniques			Significant Monitoring/Notification		
	Number of Violations	Number of Systems in Violation*	Compliance Rate	Number of Violations	Number of Systems in Violation*	Compliance Rate	Number of Violations	Number of Systems in Violation*	Compliance Rate
Radiological	381	90	95.0%	-	-	-	61	25	98.6%
IOCs	0	0	100%	-	-	-	373	27	98.5%
SOCs	1	1	99.9%	-	-	-	254	11	99.3%
VOCs	0	0	100%	-	-	-	171	10	99.4%
Nitrate / Nitrite	11	7	99.6%	-	-	-	24	24	98.6%
TCR	49	40	97.7%	-	-	-	119	84	95.3%
All SWTRs	-	-	-	16	12	97.8%	0	0	100%
Stage 1 DBPR	46	15	99.1%	23	7	99.6%	131	83	95.3%
Lead and Copper Rule	-	-	-	14	14	99.2%	64	60	96.6%
Consumer Awareness / Notification	-	-	-	-	-	-	175	140	92.2%
Total PWSs	488	149	91.7%	53	32	98.2%	1372	322	82.1%

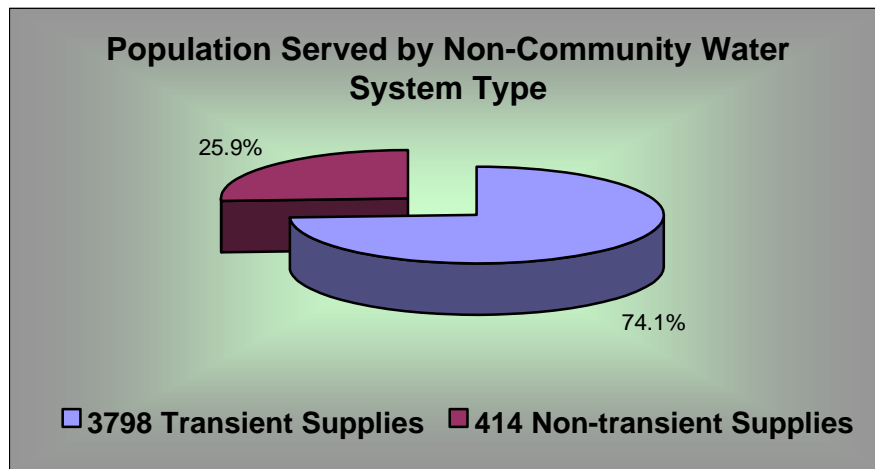
*Note: Although a CWS may be out of compliance with more than one contaminant or violation type, when calculating totals, it's counted no more than once within the population being totaled. So, the sum of NUMBER OF CWS IN VIOLATION, over the various violation types or contaminants, may not add up to the total.

Non-Community Public Water Systems

As stated previously, Illinois DPH oversees the non-community water system program. Non-community systems include the **non-transient, non-community public water systems (NTNC)** that serve 25 or more of the same nonresidents at least 180 days out of the year and include facilities such as day care centers, schools and factories. Illinois DPH also supervises the **transient non-community (TNC) public water systems** that serve 25 or more different nonresidents at least 60 days out of the year and include facilities such as campgrounds and highway rest areas.

Graph 7 ►

Population Distribution Amongst Non-community Systems



Graph 7 depicts how the 536,256 customers served by non-community water systems are distributed between the transient and non-transient systems. Transient supplies (campgrounds, rest areas, etc.) serve a population of 397,448 at 3,798 facilities. Non-transient systems serve 138,808 consumers at 414 systems.

Both NTNC and TNC are required to monitor contaminants like the CWS and issue public notification if in violation. However, TNC only monitor for nitrates, coliform bacteria, and are subject to some requirements of the surface water treatment rule (if they use surface water). NTNC monitors the same contaminants as CWS, but are not required to monitor radionuclides or issue/publish a consumer confidence report.

Non-CWS Compliance Figures

During calendar year 2005, the percentage of persons served by Illinois **non-community** water systems that were compliant with all health requirements (MCL), treatment techniques (TT), or health advisories (HA) that have been in effect for more than three years was 98.3 percent.

The following page summarizes the percentage of non-community water systems in compliance with all aspects of drinking water compliance.

**Violations during Calendar Year 2005
State of Illinois
Non-Community Water Systems**

Total Number of Regulated TNC and NTNC Systems	4212
Total Number of Systems in Violation	302
Total Number of Violations	3164

Table 2.

Rule Subtotal by Violation Type – Non-Community Water Systems									
Violation Category	MCLs			Treatment Techniques			Significant Monitoring/Notification		
	Number of Violations	Number of Systems in Violation*	Compliance Rate	Number of Violations	Number of Systems in Violation*	Compliance Rate	Number of Violations	Number of Systems in Violation*	Compliance Rate
IOCs	0	0	100%	-	-	-	504	56	86.5%
SOCs	0	0	100%	-	-	-	1487	78	81.2%
VOCs	1	1	99.8%	-	-	-	798	38	90.8%
Nitrate / Nitrite	7	7	99.8%	-	-	-	10	10	99.8%
TCR	52	51	98.8%	-	-	-	43	42	99.0%
All SWTRs	-	-	-	7	2	90.9%	15	3	86.4%
Stage 1 DBPR	11	3	96.6%	-	-	-	29	11	89.2%
Lead/Copper**	-	-	-	0	0	100%	196	132	68.1%
Consumer Awareness / Notification	-	-	-	-	-	-	4	3	99.9%
Total PWSs	71	62	98.5%	7	2	99.9%	3086	373	91.1%

*Note: Although a PWS may be out of compliance with more than one contaminant or violation type, when calculating totals, it's counted no more than once within the population being totaled. So, the sum of NUMBER OF PWSs IN VIOLATION, over the various violation types or contaminants, may not add up to the total.

** The compliance rate for LCR monitoring was severely impacted by the loss of the IDPH laboratory capacity to run these analyses for non-community schools. Until 2003, IDPH laboratory analyzed these samples for schools. A large portion of these violations are schools which were unable to get a private laboratory contracted before a violation occurred. IDPH is working with these schools to get the analyses performed and return to compliance.

Common Terms & Definitions

¹Public Water System (PWS)

A Public Water System (PWS) is defined as a system that provides water via piping or other constructed conveyances for human consumption to at least 15 service connections or serves an average of at least 25 people for at least 60 days each year. There are three types of PWSs. PWSs can be community (such as towns), non-transient non-community (such as schools or factories), or transient non-community systems (such as rest stops or parks). For this report when the acronym “PWS” is used, it means systems of all types unless specified in greater detail.

²Maximum Contaminant Level (MCL)

Under the Safe Drinking Water Act (SDWA), the EPA sets national limits on contaminant levels in drinking water to ensure that the water is safe for human consumption. These limits are known as Maximum Contaminant Levels (MCLs).

³Maximum Residual Disinfectant Level (MRDL)

The EPA sets national limits on residual disinfectant levels in drinking water to reduce the risk of exposure to disinfection byproducts formed when public water systems add chemical disinfectant for either primary or residual treatment. These limits are known as Maximum Residual Disinfectant Levels (MRDLs).

⁴Treatment Techniques (TT)

For some regulations, the EPA establishes treatment techniques (TTs) in lieu of an MCL to control unacceptable levels of certain contaminants. For example, treatment techniques have been established for viruses, some bacteria, and turbidity.

Return to Compliance

As noted in the definition of monitoring violations, systems which monitor less frequently than quarterly can return to compliance. Some systems can return to compliance if they monitor for the missed contaminants or submit reports late. In this report, return to compliance rates were determined for inorganic contaminants; nitrate; nitrite; regulated volatile organic contaminants; synthetic organic contaminants; total trihalomethanes; five haloacetic acids (DBPs); and radiological contaminants, as a group.

⁵Significant Monitoring and Reporting (M/R) Violations

A PWS is required to monitor and verify that the levels of contaminants present in the water do not exceed the MCL. If a PWS fails to have its water tested as required or fails to report test results correctly to the appropriate Agency, a monitoring violation occurs. For this report, significant monitoring violations are generally defined as any significant monitoring violation that occurred during the calendar year of the report. A significant monitoring violation, with rare exceptions, occurs when no samples were taken or no results were reported during a compliance period.

⁶Significant Consumer Notification Violations

Every Community Water System is required to deliver to its customers a brief annual water quality report (CCR). This report is to include some educational material, and will provide information on the source water, the levels of any detected contaminants, and compliance with drinking water regulations. For this report, a significant public notification violation occurred if a community water system completely failed to provide its customers the required annual water quality report.

OBTAINING COPY OF 2005 PUBLIC WATER SYSTEMS REPORT

As required by the Safe Drinking Water Act, the Illinois EPA has made the 2005 Public Water Systems report available to the public. Interested individuals can obtain a copy of the 2005 Annual Public Water Systems Report for Illinois by accessing:

State Website: <http://www.epa.state.il.us/water/compliance/drinking-water/compliance-report/index.html>

Telephone: (217) 785 0561

Fax Number: (217) 557 1407

Address: Illinois EPA
Bureau of Water, Compliance Assurance Section
1021 North Grand Ave
PO Box 19276
Springfield, IL 62794

Contact Name: Mike Crumly

Appendix A

The attached tables summarize the number of maximum contaminant level, treatment technique, and significant monitoring violations that occurred during calendar year 2005 for each contaminant regulated by the Safe Drinking Water Act (SDWA). Also identified is the number of public water supplies responsible for the violations and the number of violations that have returned to compliance.

Appendix A
Illinois EPA 2005 Annual Compliance Report
Calendar Year 2005

Community Water Supplies

Volatile Organic Chemicals (VOCs)								
Code	Name	MCL (mg/l)	MCLs*			Monitoring*		
			# of Violations	# of RTC Violations	# of PWSs In Violation	# of Violations	# of RTC Violations	# of PWSs In Violation
2977	1,1-Dichloroethylene	0.007	0	0	0	8	4	5
2981	1,1,1-Trichloroethane	0.2	0	0	0	8	4	5
2985	1,1,2-Trichloroethane	0.005	0	0	0	9	5	6
2980	1,2-Dichloroethane	0.005	0	0	0	8	4	5
2983	1,2-Dichloropropane	0.005	0	0	0	8	4	5
2378	1,2,4-Trichlorobenzene	0.07	0	0	0	8	4	5
2990	Benzene	0.005	0	0	0	9	5	6
2982	Carbon Tetrachloride	0.005	0	0	0	8	4	5
2380	Cis-1,2-Dichloroethylene	0.07	0	0	0	8	4	5
2964	Dichloromethane (Methylene Chloride)	0.005	0	0	0	9	5	6
2992	Ethylbenzene	0.7	0	0	0	9	5	6
2989	Monochlorobenzene (Chlorobenzene)	0.1	0	0	0	8	4	5
2968	o-Dichlorobenzene	0.6	0	0	0	8	4	5
2969	p-Dichlorobenzene	0.075	0	0	0	8	4	5
2996	Styrene	0.1	0	0	0	9	5	6
2987	Tetrachloroethylene	0.005	0	0	0	9	5	6
2991	Toluene	1	0	0	0	9	5	6
2979	Trans-1,2-Dichloroethylene	0.1	0	0	0	8	4	5
2984	Trichloroethylene	0.005	0	0	0	9	5	6
2955	Xylenes, Total	10	0	0	0	10	6	7
2976	Vinyl Chloride	0.002	0	0	0	1	1	1
VOC Totals			0	0	0	171	91	10

Note: Although a PWS may be out of compliance with more than one contaminant or violation type, when calculating totals, it's counted no more than once within the population being totaled. So, the sum of NUMBER OF PWSs IN VIOLATION, over the various violation types or contaminants, may not add up to the total.

Appendix A
Illinois EPA 2005 Annual Compliance Report
Calendar Year 2005
Community Water Supplies

Synthetic Organic Chemicals (SOCs)								
Code	Name	MCL (mg/l)	MCLs*			Monitoring*		
			# of Violations	# of RTC Violations	# of PWSs In Violation	# of Violations	# of RTC Violations	# of PWSs In Violation
2931	1,2 Dibromo-3-Chloropropane (DBCP)	0.0002	0	0	0	8	5	6
2105	2,4-D	0.07	0	0	0	8	5	6
2063	2,3,7,8-TCDD (Dioxin)	3x10-8	0	0	0	0	0	0
2110	2,4,5-TP (Silvex)	0.05	0	0	0	8	5	6
2051	Alachlor (Lasso)	0.002	0	0	0	9	6	7
2050	Atrazine	0.003	0	0	0	8	5	6
2306	Benzo (A) Pyrene	0.0002	0	0	0	9	5	7
2010	BHC-gamma (Lindane)	0.0002	0	0	0	8	5	6
2046	Carbofuran	0.04	0	0	0	8	5	6
2959	Chlordane	0.002	0	0	0	8	5	6
2031	Dalapon	0.2	0	0	0	8	5	6
2035	Di(2-Ethylhexyl) Adipate	0.4	0	0	0	8	5	6
2039	Di(2-Ethylhexyl) Phthalate	0.006	0	0	0	10	7	8
2041	Dinoseb	0.007	0	0	0	8	5	6
2032	Diquat	0.02	0	0	0	8	5	6
2033	Endothall	0.1	0	0	0	8	5	6
2005	Endrin	0.002	0	0	0	8	5	6
2946	Ethylene Dibromide (EDB)	0.00005	0	0	0	8	5	6
2034	Glyphosate	0.7	0	0	0	0	0	0
2065	Heptachlor	0.0004	0	0	0	8	5	6
2067	Heptachlor Epoxide	0.0002	0	0	0	8	5	6
2274	Hexachlorobenzene (HCB)	0.001	0	0	0	8	5	6
2042	Hexachlorocyclopentadiene	0.05	0	0	0	8	5	6
2015	Methoxychlor	0.04	0	0	0	8	5	6
2036	Oxamyl (Vydate)	0.2	0	0	0	8	5	6
2326	Pentachlorophenol	0.001	0	0	0	9	6	7
2040	Picloram	0.5	0	0	0	8	5	6

Note: Although a PWS may be out of compliance with more than one contaminant or violation type, when calculating totals, it's counted no more than once within the population being totaled. So, the sum of NUMBER OF PWSs IN VIOLATION, over the various violation types or contaminants, may not add up to the total.

Appendix A
Illinois EPA 2005 Annual Compliance Report
Calendar Year 2005
Community Water Supplies

SOCs continued								
Code	Name	MCL (mg/l)	MCLs*			Monitoring*		
			# of Violations	# of RTC Violations	# of PWSs In Violation	# of Violations	# of RTC Violations	# of PWSs In Violation
2037	Simazine	0.004	1	0	1	9	6	7
2383	Total Polychlorinated Biphenyls (PCB)	0.0005	0	0	0	8	5	6
2020	Toxaphene	0.003	0	0	0	8	5	6
SOC Totals			1	0	1	254	160	11

Code	Name	MCL (mg/l)	Treatment Technique*			Monitoring*		
			# of Violations	# of RTC Violations	# of PWSs In Violation	# of Violations	# of RTC Violations	# of PWSs In Violation
2257	Epichlorohydrin	TT	0	0	0	0	0	0
2265	Acrylamide	TT	0	0	0	0	0	0
Totals			0	0	0	0	0	0

Note: Although a PWS may be out of compliance with more than one contaminant or violation type, when calculating totals, it's counted no more than once within the population being totaled. So, the sum of NUMBER OF PWSs IN VIOLATION, over the various violation types or contaminants, may not add up to the total.

Appendix A
Illinois EPA 2005 Annual Compliance Report
Calendar Year 2005
Community Water Supplies

Inorganic Chemicals (IOCs)								
Code	Name	MCL (mg/l)	MCLs*			Monitoring*		
			# of Violations	# of RTC Violations	# of PWSs In Violation	# of Violations	# of RTC Violations	# of PWSs In Violation
1074	Antimony, Total	0.006	0	0	0	22	22	22
1005	Arsenic	0.05	0	0	0	23	23	23
1010	Barium	2	0	0	0	24	24	24
1075	Beryllium, Total	0.004	0	0	0	23	23	23
1015	Cadmium	0.005	0	0	0	24	23	24
1020	Chromium	0.1	0	0	0	23	23	23
1024	Cyanide	0.2	0	0	0	24	24	24
1025	Fluoride	4	0	0	0	21	21	21
1035	Mercury	0.002	0	0	0	21	21	21
1040	Nitrate	10	9	9	5	22	18	22
1038	Total Nitrite & Nitrate	10	0	0	0	0	0	0
1041	Nitrite	1	2	2	2	2	2	2
1045	Selenium	0.05	0	0	0	23	23	23
1085	Thallium, Total	0.002	0	0	0	23	23	23
1094	Asbestos	7 MFL	0	0	0	0	0	0
IOC Totals			11	11	7	397	392	46

Note: Although a PWS may be out of compliance with more than one contaminant or violation type, when calculating totals, it's counted no more than once within the population being totaled. So, the sum of NUMBER OF PWSs IN VIOLATION, over the various violation types or contaminants, may not add up to the total.

Appendix A
Illinois EPA 2005 Annual Compliance Report
Calendar Year 2005
Community Water Supplies

Radionuclide Contaminants (RAD)								
Code	Name	MCL	MCLs*			Monitoring*		
			# of Violations	# of RTC Violations	# of PWSs In Violation	# of Violations	# of RTC Violations	# of PWSs In Violation
4000 & 4109	Gross Alpha Adjusted Gross Alpha	15 pCi/L	94	52	34	20	18	18
4010	Radium-226 & Radium-228	5 pCi/L	287	101	90	21	18	19
4006	Uranium	30 pCi/L	0	0	0	20	18	16
4100	Gross Beta	4/mrem/yr	0	0	0	0	0	0
RAD Totals			381	153	90	61	54	25

Coliform (TCR)							
Violation Type	Violation Name	# of Violations*	# of RTC Violations*	# of PWSs In Violation*			
21	MCL, Acute	3	3	3			
22	MCL, Monthly	46	46	40			
23, 25	Monitoring Routine & Repeat Major	119	113	84			
		MCLs*			Monitoring*		
		# of Violations	# of RTC Violations	# of PWSs In Violation	# of Violations	# of RTC Violations	# of PWSs In Violation
TCR Totals		49	49	40	119	113	84

Note: Although a PWS may be out of compliance with more than one contaminant or violation type, when calculating totals, it's counted no more than once within the population being totaled. So, the sum of NUMBER OF PWSs IN VIOLATION, over the various violation types or contaminants, may not add up to the total.

Appendix A
Illinois EPA 2005 Annual Compliance Report
Calendar Year 2005
Community Water Supplies

Stage 1 Disinfectants and Disinfection Byproducts Rule (Stage 1 DBPR)										
Violation Type	Contam Code	Violation Name	# of Violations*	# of RTC Violations*	# of PWSs In Violation*					
12 and 37	0400	Qualified Operator Failure or Failure to Profile/Consult TT	0	0	0					
46	2920	Inadequate DBP Precursor Removal Treatment Technique	23	18	7					
02	1011	Bromate MCL	0	0	0					
02	1009	Chlorite MCL	0	0	0					
02	2456	Total Haloacetic Acids (HAA) MCL	13	7	6					
02	2950	Total Trihalomethanes (TTHM) MCL	33	16	13					
11	0999	Chlorine Maximum Residual Disinfectant Level (MRDL)	0	0	0					
11	1006	Chloramine MRDL	0	0	0					
11	1008	Chlorine Dioxide MRDL	0	0	0					
11	1008	Chlorine Dioxide Monitoring	0	0	0					
13	1008	Chlorine Dioxide MRDL Acute	0	0	0					
27	0400	No DBPR Monitoring Plan	0	0	0					
27	0999	Chlorine Monitoring	86	80	65					
27	1004	Bromide Monitoring	0	0	0					
27	1006	Chloramine Residual Monitoring	1	1	1					
27	1008	Chlorine Dioxide Residual Monitoring	0	0	0					
27	1009	Chlorite Monitoring	0	0	0					
27	1011	Bromate Monitoring	0	0	0					
27	2456	Total Haloacetic Acids (HAA) Monitoring	18	14	16					
27	2920	TOC Monitoring	6	6	3					
27	1927	Alkalinity	3	3	3					
27	2950	Total Trihalomethanes (TTHM) Monitoring	17	13	16					
		MCLs/MRDL *	Monitoring*			Treatment Technique*				
		# of Violations	# of RTC Violations	# of PWSs In Violation	# of Violations	# of RTC Violations	# of PWSs In Violation	# of Violations	# of RTC Violations	# of PWSs In Violation
Stage 1 DBPR Totals		46	23	15	131	117	83	23	18	7

Note: Although a PWS may be out of compliance with more than one contaminant or violation type, when calculating totals, it's counted no more than once within the population being totaled. So, the sum of NUMBER OF PWSs IN VIOLATION, over the various violation types or contaminants, may not add up to the total.

Appendix A
Illinois EPA 2005 Annual Compliance Report
Calendar Year 2005
Community Water Supplies

Lead and Copper Rule (LCR)							
Violation Type	Violation Name	# of Violations*		# of RTC Violations*	# of PWSs In Violation*		
51	Monitoring, Initial Tap Sampling for Pb/Cu	15		2	13		
52	Monitoring, Follow-up & Routine Tap Sampling for Pb/Cu	49		28	45		
58	Treatment Installation	1		1	1		
59	Water Quality Parameter TT	4		2	4		
65	Public Education	9		6	9		
		Monitoring*			Treatment Technique*		
		# of Violations	# of RTC Violations	# of PWSs In Violation	# of Violations	# of RTC Violations	# of PWSs In Violation
LCR Totals		64	30	60	14	9	14

Consumer Notification						
Violation Type	Violation Name	# of Violations*		# of RTC Violations*	# of PWSs In Violation*	
71	CCR, Significant Reporting	36		34	36	
75 and 76	Public Notice Rule Reporting	139		129	106	
TOTAL		175		163	140	

Note: Although a PWS may be out of compliance with more than one contaminant or violation type, when calculating totals, it's counted no more than once within the population being totaled. So, the sum of NUMBER OF PWSs IN VIOLATION, over the various violation types or contaminants, may not add up to the total.

Appendix A
Illinois EPA 2005 Annual Compliance Report
Calendar Year 2005
Non - Community Water Supplies

Volatile Organic Chemicals (VOCs)								
Code	Name	MCL (mg/l)	MCLs*			Monitoring*		
			# of Violations	# of RTC Violations	# of PWSs In Violation	# of Violations	# of RTC Violations	# of PWSs In Violation
2977	1,1-Dichloroethylene	0.007	0	0	0	38	2	38
2981	1,1,1-Trichloroethane	0.2	0	0	0	38	2	38
2985	1,1,2-Trichloroethane	0.005	0	0	0	38	2	38
2980	1,2-Dichloroethane	0.005	0	0	0	38	2	38
2983	1,2-Dichloropropane	0.005	0	0	0	38	2	38
2378	1,2,4-Trichlorobenzene	0.07	0	0	0	38	2	38
2990	Benzene	0.005	0	0	0	38	2	38
2982	Carbon Tetrachloride	0.005	0	0	0	38	2	38
2380	Cis-1,2-Dichloroethylene	0.07	0	0	0	38	2	38
2964	Dichloromethane (Methylene Chloride)	0.005	0	0	0	38	2	38
2992	Ethylbenzene	0.7	0	0	0	38	2	38
2989	Monochlorobenzene (Chlorobenzene)	0.1	0	0	0	38	2	38
2968	o-Dichlorobenzene	0.6	0	0	0	38	2	38
2969	p-Dichlorobenzene	0.075	0	0	0	38	2	38
2996	Styrene	0.1	0	0	0	38	2	38
2987	Tetrachloroethylene	0.005	0	0	0	38	2	38
2991	Toluene	1	0	0	0	38	2	38
2979	Trans-1,2-Dichloroethylene	0.1	0	0	0	38	2	38
2984	Trichloroethylene	0.005	1	0	1	38	2	38
2955	Xylenes, Total	10	0	0	0	38	2	38
2976	Vinyl Chloride	0.002	0	0	0	38	2	38
VOC Totals			1	0	1	798	42	38

Note: Although a PWS may be out of compliance with more than one contaminant or violation type, when calculating totals, it's counted no more than once within the population being totaled. So, the sum of NUMBER OF PWSs IN VIOLATION, over the various violation types or contaminants, may not add up to the total.

Appendix A
Illinois EPA 2005 Annual Compliance Report
Calendar Year 2005
Non - Community Water Supplies

Synthetic Organic Chemicals (SOCs)								
Code	Name	MCL (mg/l)	MCLs*			Monitoring*		
			# of Violations	# of RTC Violations	# of PWSs In Violation	# of Violations	# of RTC Violations	# of PWSs In Violation
2931	1,2 Dibromo-3-Chloropropane (DBCP)	0.0002	0	0	0	63	5	62
2105	2,4-D	0.07	0	0	0	63	5	62
2063	2,3,7,8-TCDD (Dioxin)	3x10-8	0	0	0	0	0	0
2110	2,4,5-TP (Silvex)	0.05	0	0	0	63	5	62
2051	Alachlor (Lasso)	0.002	0	0	0	63	5	62
2050	Atrazine	0.003	0	0	0	63	5	62
2306	Benzo (A) Pyrene	0.0002	0	0	0	16	0	16
2010	BHC-gamma (Lindane)	0.0002	0	0	0	63	5	62
2046	Carbofuran	0.04	0	0	0	63	5	62
2959	Chlordane	0.002	0	0	0	63	5	62
2031	Dalapon	0.2	0	0	0	16	0	16
2035	Di(2-Ethylhexyl) Adipate	0.4	0	0	0	16	0	16
2039	Di(2-Ethylhexyl) Phthalate	0.006	0	0	0	16	0	16
2041	Dinoseb	0.007	0	0	0	16	0	16
2032	Diquat	0.02	0	0	0	69	4	68
2033	Endothall	0.1	0	0	0	69	4	68
2005	Endrin	0.002	0	0	0	16	0	16
2946	Ethylene Dibromide (EDB)	0.00005	0	0	0	63	5	62
2034	Glyphosate	0.7	0	0	0	69	4	68
2065	Heptachlor	0.0004	0	0	0	63	5	62
2067	Heptachlor Epoxide	0.0002	0	0	0	63	5	62
2274	Hexachlorobenzene (HCB)	0.001	0	0	0	16	0	16
2042	Hexachlorocyclopentadiene	0.05	0	0	0	16	0	16
2015	Methoxychlor	0.04	0	0	0	63	5	62
2036	Oxamyl (Vydate)	0.2	0	0	0	69	4	68
2326	Pentachlorophenol	0.001	0	0	0	63	5	62
2040	Picloram	0.5	0	0	0	69	4	68

Note: Although a PWS may be out of compliance with more than one contaminant or violation type, when calculating totals, it's counted no more than once within the population being totaled. So, the sum of NUMBER OF PWSs IN VIOLATION, over the various violation types or contaminants, may not add up to the total.

Appendix A
Illinois EPA 2005 Annual Compliance Report
Calendar Year 2005
Non - Community Water Supplies

SOCs continued								
Code	Name	MCL (mg/l)	MCLs*			Monitoring*		
			# of Violations	# of RTC Violations	# of PWSs In Violation	# of Violations	# of RTC Violations	# of PWSs In Violation
2037	Simazine	0.004	0	0	0	69	4	68
2383	Total Polychlorinated Biphenyls (PCB)	0.0005	0	0	0	63	5	62
2020	Toxaphene	0.003	0	0	0	63	5	62
SOC Totals			0	0	0	1487	99	78

Code	Name	MCL (mg/l)	Treatment Technique*			Monitoring*		
			# of Violations	# of RTC Violations	# of PWSs In Violation	# of Violations	# of RTC Violations	# of PWSs In Violation
2257	Epichlorohydrin	TT	0	0	0	0	0	0
2265	Acrylamide	TT	0	0	0	0	0	0
Totals			0	0	0	0	0	0

Note: Although a PWS may be out of compliance with more than one contaminant or violation type, when calculating totals, it's counted no more than once within the population being totaled. So, the sum of NUMBER OF PWSs IN VIOLATION, over the various violation types or contaminants, may not add up to the total.

Appendix A
Illinois EPA 2005 Annual Compliance Report
Calendar Year 2005
Non - Community Water Supplies

Inorganic Chemicals (IOCs)								
Code	Name	MCL (mg/l)	MCLs*			Monitoring*		
			# of Violations	# of RTC Violations	# of PWSs In Violation	# of Violations	# of RTC Violations	# of PWSs In Violation
1074	Antimony, Total	0.006	0	0	0	56	2	56
1005	Arsenic	0.05	0	0	0	0	0	0
1010	Barium	2	0	0	0	56	2	56
1075	Beryllium, Total	0.004	0	0	0	56	2	56
1015	Cadmium	0.005	0	0	0	56	2	56
1020	Chromium	0.1	0	0	0	56	2	56
1024	Cyanide	0.2	0	0	0	56	2	56
1025	Fluoride	4	0	0	0	0	0	0
1035	Mercury	0.002	0	0	0	56	2	56
1040	Nitrate	10	7	1	7	10	0	10
1038	Total Nitrite & Nitrate	10	0	0	0	0	0	0
1041	Nitrite	1	0	0	0	0	0	0
1045	Selenium	0.05	0	0	0	56	2	56
1085	Thallium, Total	0.002	0	0	0	56	2	56
1094	Asbestos	7 MFL	0	0	0	0	0	0
IOC Totals			7	1	7	514	18	66

Note: Although a PWS may be out of compliance with more than one contaminant or violation type, when calculating totals, it's counted no more than once within the population being totaled. So, the sum of NUMBER OF PWSs IN VIOLATION, over the various violation types or contaminants, may not add up to the total.

Appendix A
Illinois EPA 2005 Annual Compliance Report
Calendar Year 2005
Non - Community Water Supplies

Coliform (TCR)							
Violation Type	Violation Name	# of Violations*		# of RTC Violations*	# of PWSs In Violation*		
21	MCL, Acute	3		1	3		
22	MCL, Monthly	49		30	48		
23, 25	Monitoring Routine & Repeat Major	43		11	42		
		MCLs*			Monitoring*		
		# of Violations	# of RTC Violations	# of PWSs In Violation	# of Violations	# of RTC Violations	# of PWSs In Violation
TCR Totals		52	31	51	43	11	42

Lead and Copper Rule (LCR)							
Violation Type	Violation Name	# of Violations*		# of RTC Violations*	# of PWSs In Violation*		
51	Monitoring, Initial Tap Sampling for Pb/Cu	0		0	0		
52	Monitoring, Follow-up & Routine Tap Sampling for Pb/Cu	158		27	128		
53	Water Quality Parameter M&R	1		1	1		
57	OCCT/SOWT Recommendation/Study	20		0	20		
58	Treatment Installation	0		0	0		
59	Water Quality Parameter TT	0		0	0		
65	Public Education	17		0	17		
		Monitoring*			Treatment Technique*		
		# of Violations	# of RTC Violations	# of PWSs In Violation	# of Violations	# of RTC Violations	# of PWSs In Violation
LCR Totals		196	28	132	0	0	0

*The compliance rate for LCR monitoring was severely impacted by the loss of the IDPH laboratory capacity to run these analyses for non-community schools. Until 2003, IDPH laboratory analyzed these samples for schools. A large portion of these violations are schools which were unable to get a private laboratory contracted before a violation occurred. IDPH is working with these schools to get the analyses performed and return to compliance.

Note: Although a PWS may be out of compliance with more than one contaminant or violation type, when calculating totals, it's counted no more than once within the population being totaled. So, the sum of NUMBER OF PWSs IN VIOLATION, over the various violation types or contaminants, may not add up to the total.

Appendix A
Illinois EPA 2005 Annual Compliance Report
Calendar Year 2005
Non - Community Water Supplies

Stage 1 Disinfectants and Disinfection Byproducts Rule (Stage 1 DBPR)										
Violation Type	Contam Code	Violation Name	# of Violations*	# of RTC Violations*	# of PWSs In Violation*					
12 and 37	0400	Qualified Operator Failure or Failure to Profile/Consult TT	0	0	0					
46	2920	Inadequate DBP Precursor Removal Treatment Technique	0	0	0					
02	1011	Bromate MCL	0	0	0					
02	1009	Chlorite MCL	0	0	0					
02	2456	Total Haloacetic Acids (HAA) MCL	4	4	2					
02	2950	Total Trihalomethanes (TTHM) MCL	7	7	3					
11	0999	Chlorine Maximum Residual Disinfectant Level (MRDL)	0	0	0					
11	1006	Chloramine MRDL	0	0	0					
11	1008	Chlorine Dioxide MRDL	0	0	0					
11	1008	Chlorine Dioxide Monitoring	0	0	0					
13	1008	Chlorine Dioxide MRDL Acute	0	0	0					
27	0400	No DBPR Monitoring Plan	0	0	0					
27	0999	Chlorine Monitoring	0	0	0					
27	1004	Bromide Monitoring	0	0	0					
27	1006	Chloramine Residual Monitoring	0	0	0					
27	1008	Chlorine Dioxide Residual Monitoring	0	0	0					
27	1009	Chlorite Monitoring	0	0	0					
27	1011	Bromate Monitoring	11	11	2					
27	2456	Total Haloacetic Acids (HAA) Monitoring	9	1	9					
27	2920	TOC Monitoring	0	0	0					
27	2950	Total Trihalomethanes (TTHM) Monitoring	9	1	9					
		MCLs/MRDL *	Monitoring*			Treatment Technique*				
		# of Violations	# of RTC Violations	# of PWSs In Violation	# of Violations	# of RTC Violations	# of PWSs In Violation	# of Violations	# of RTC Violations	# of PWSs In Violation
Stage 1 DBPR Totals		11	11	3	29	13	11	0	0	0

Note: Although a PWS may be out of compliance with more than one contaminant or violation type, when calculating totals, it's counted no more than once within the population being totaled. So, the sum of NUMBER OF PWSs IN VIOLATION, over the various violation types or contaminants, may not add up to the total.

Appendix A
Illinois EPA 2005 Annual Compliance Report
Calendar Year 2005
Community Water Supplies

2005 State Summary – Community Water Supplies (CWS)										
Rule Group	Chemical Sub-Group	MCLs*			Monitoring/Notification*			Treatment Technique*		
		# of Violations	# of RTC Violations	# of PWSs In Violation	# of Violations	# of RTC Violations	# of PWSs In Violation	# of Violations	# of RTC Violations	# of PWSs In Violation
CHEM	VOC	0	0	0	171	91	10			
	SOC	1	0	1	254	160	11			
	IOC	0	0	0	373	372	27			
	NO2/NO3	11	11	7	24	20	24			
	RAD	381	153	90	61	54	25			
CHEM Subtotal		393	164	98	883	697	78			
TCR Subtotal		49	49	40	119	113	84			
Stage 1 DBPR Subtotal		46	23	15	131	117	83	23	18	7
All SWTRs Subtotal					0	0	0	16	11	12
LCR Subtotal					64	30	60	14	9	14
Consumer Notification Subtotal					175	163	140			
TOTAL		488	236	149	1,372	1,120	322	53	38	32
Total Number of CWSs				Grand Total Number CWS Violations (MCL, Monitoring, and Treatment Technique)				Grand Total of CWSs in Violation (MCL, Monitoring, and Treatment Technique)		
1,800				1,913				422		

Note: Although a PWS may be out of compliance with more than one contaminant or violation type, when calculating totals, it's counted no more than once within the population being totaled. So, the sum of NUMBER OF PWSs IN VIOLATION, over the various violation types or contaminants, may not add up to the total.

Appendix A
Illinois EPA 2005 Annual Compliance Report
Calendar Year 2005
Non - Community Water Supplies

2005 State Summary – Non-Community Water Supplies (CWS)										
Rule Group	Chemical Sub-Group	MCLs*			Monitoring/Notification*			Treatment Technique*		
		# of Violations	# of RTC Violations	# of PWSs In Violation	# of Violations	# of RTC Violations	# of PWSs In Violation	# of Violations	# of RTC Violations	# of PWSs In Violation
CHEM	VOC	1	0	1	798	42	38			
	SOC	0	0	0	1487	99	78			
	IOC	0	0	0	504	18	56			
	NO2/NO3	7	1	7	10	0	10			
CHEM Subtotal		8	1	8	2799	159	182			
TCR Subtotal		52	31	51	43	11	42			
Stage 1 DBPR Subtotal		11	11	3	29	13	11	0	0	0
All SWTRs Subtotal					15	5	3	7	7	2
LCR Subtotal					196	28	132	0	0	0
Consumer Notification Subtotal					4	4	3			
TOTAL		71	43	62	3086	220	373	7	7	2
Total Number of CWSs				Grand Total Number CWS Violations (MCL, Monitoring, and Treatment Technique)			Grand Total of CWSs in Violation (MCL, Monitoring, and Treatment Technique)			
4212				3164			302			

Note: Although a PWS may be out of compliance with more than one contaminant or violation type, when calculating totals, it's counted no more than once within the population being totaled. So, the sum of NUMBER OF PWSs IN VIOLATION, over the various violation types or contaminants, may not add up to the total.

Appendix B

The attached report identifies all public water supplies with maximum contaminant level and treatment technique violations in contaminant order.

Appendix B

Illinois EPA 2005 Annual Compliance

Maximum Contaminant Level and Treatment Technique Violations

Listing by Contaminant

<u>Facility Number and Name</u>	<u>Contaminant</u>	<u>Comments</u>
IL0630050 BRACEVILLE	Coliform (Acute) MCL	Returned to Compliance
IL3122804 FAIRVIEW UNITED METHODIST CH	Coliform (Acute) MCL	Enforcement in Process
IL3126565 HIS REST BED & BREAKFAST	Coliform (Acute) MCL	Returned to Compliance
IL3138958 JOHN DOUGH/MY PLACE	Coliform (Acute) MCL	Enforcement in process
IL1970750 PEOTONE	Coliform (Acute) MCL	Returned to Compliance
IL3148106 ALTO VINEYARD	Coliform MCL	Returned to Compliance
IL1830050 ALVAN	Coliform MCL	Returned to Compliance
IL3113589 AMEREN-CILCO-EASTERN SERVICE CENTER	Coliform MCL	Returned to Compliance
IL0850050 APPLE RIVER	Coliform MCL	Returned to Compliance
IL1830500 AQUA ILLINOIS-INDIANOLA	Coliform MCL	Returned to Compliance
IL3021824 ARGYLE LAKE STATE PARK (21824)	Coliform MCL	Enforcement in process
IL0730200 ATKINSON	Coliform MCL	Returned to Compliance
IL1090050 BARDOLPH	Coliform MCL	Returned to Compliance
IL3020636 BERTS AT OAKHILL	Coliform MCL	Enforcement in process
IL1015300 BIRDS PINKSTAFF WATER DISTRICT	Coliform MCL	Returned to Compliance
IL0630050 BRACEVILLE	Coliform MCL	Returned to Compliance
IL0570200 BRYANT	Coliform MCL	Returned to Compliance
IL3102210 BUSSE WOODS SOUTH 1231	Coliform MCL	Enforcement in process
IL3048959 BYRON HILLS GOLF COURSE	Coliform MCL	Returned to Compliance
IL3101360 CARLSON SPGS STABLES 5253	Coliform MCL	Returned to Compliance
IL3117895 CAT TECH CENTER	Coliform MCL	Returned to Compliance
IL1670300 CHATHAM	Coliform MCL	Returned to Compliance
IL1430200 CHILLICOTHE	Coliform MCL	Returned to Compliance

Appendix B

Illinois EPA 2005 Annual Compliance

Maximum Contaminant Level and Treatment Technique Violations

Listing by Contaminant

<u>Facility Number and Name</u>	<u>Contaminant</u>	<u>Comments</u>
IL1910050 CISNE	Coliform MCL	Returned to Compliance
IL0250050 CLAY CITY	Coliform MCL	Returned to Compliance
IL1090200 COLCHESTER	Coliform MCL	Returned to Compliance
IL3138594 CONDITS RANCH EAST WELL	Coliform MCL	Enforcement in process
IL1975480 CRYSTAL LAWNS SUBDIVISION	Coliform MCL	Returned to Compliance
IL3109876 CUSTERS KEG	Coliform MCL	Returned to Compliance
IL3110932 DOUBLE TREE HILLS	Coliform MCL	Enforcement in process
IL0670010 ELVASTON	Coliform MCL	Returned to Compliance
IL3016477 ESPENSCHIED MEMORIAL PARK	Coliform MCL	Returned to Compliance
IL3135293 FIRST CHURCH OF THE NAZARENE (135293)	Coliform MCL	Returned to Compliance
IL3136945 FREEDOM OIL COMPANY (136945)	Coliform MCL	Enforcement in process
IL1430350 GLASFORD	Coliform MCL	Returned to Compliance
IL3024596 GOLD HILLS GOLF COURSE	Coliform MCL	Returned to Compliance
IL0670400 HAMILTON	Coliform MCL	Returned to Compliance
IL3138941 HARDYS REINDEER RANCH	Coliform MCL	Returned to Compliance
IL0970450 HAWTHORN WOODS	Coliform MCL	Returned to Compliance
IL0950250 HENDERSON	Coliform MCL	Returned to Compliance
IL1795495 HIATTS HIDEAWAY MHP	Coliform MCL	Returned to Compliance
IL3052563 I&I STEAK HOUSE	Coliform MCL	Returned to Compliance
IL3141671 INDIAN HILLS FOREST PRESERVE	Coliform MCL	Enforcement in process
IL3049296 ISLAND MARINA	Coliform MCL	Returned to Compliance
IL0830250 JERSEYVILLE	Coliform MCL	Returned to Compliance
IL3097444 JOHN&NAOMIS CORNER TAP	Coliform MCL	Returned to Compliance
IL3116095 JUBILEE CAFE	Coliform MCL	Returned to Compliance

Appendix B

Illinois EPA 2005 Annual Compliance

Maximum Contaminant Level and Treatment Technique Violations

Listing by Contaminant

<u>Facility Number and Name</u>	<u>Contaminant</u>	<u>Comments</u>
IL3004309 KILBUCK CREEK F P EDGEWOOD	Coliform MCL	Returned to Compliance
IL3004283 KILBUCK CREEK FP UPPER ENT	Coliform MCL	Returned to Compliance
IL3126532 KOUNTRY KORNER (126532)	Coliform MCL	Returned to Compliance
IL1110400 LAKE IN THE HILLS	Coliform MCL	Returned to Compliance
IL3085902 LOUD THUNDER FOREST PRESERVE B	Coliform MCL	Enforcement in process
IL3131177 MALIBU BAY LOUNGE	Coliform MCL	Enforcement in process
IL1470300 MANSFIELD	Coliform MCL	Returned to Compliance
IL0910600 MANTENO	Coliform MCL	Returned to Compliance
IL0311770 MARKHAM	Coliform MCL	Returned to Compliance
IL3006940 MARSHALL CO SPORTSMENS CLUB (6940)	Coliform MCL	Enforcement in process
IL3006940 MARSHALL CO SPORTSMENS CLUB (6940)	Coliform MCL	Returned to Compliance
IL1630800 MASCOUTAH	Coliform MCL	Returned to Compliance
IL0490300 MASON	Coliform MCL	Returned to Compliance
IL0311800 MATTESON	Coliform MCL	Returned to Compliance
IL3032979 MCDUCKS	Coliform MCL	Enforcement in process
IL3003483 MCMILLENS CAMP-A-WHILE	Coliform MCL	Returned to Compliance
IL0970110 MDWS AT LKMR SULLIVAN LAKE SUBDIVISION	Coliform MCL	Returned to Compliance
IL3110957 MESSIAH LUTHERAN CHURCH (110957)	Coliform MCL	Enforcement in process
IL1350020 MONTGOMERY COUNTY WATER COMPANY	Coliform MCL	Returned to Compliance
IL3123182 MOON GLO	Coliform MCL	Returned to Compliance
IL1790500 MORTON	Coliform MCL	Returned to Compliance
IL0090100 MOUNT STERLING	Coliform MCL	Returned to Compliance

Appendix B

Illinois EPA 2005 Annual Compliance

Maximum Contaminant Level and Treatment Technique Violations

Listing by Contaminant

<u>Facility Number and Name</u>	<u>Contaminant</u>	<u>Comments</u>
IL3094672 MURPHYS PARKSIDE CAMPGROUND	Coliform MCL	Returned to Compliance
IL3010215 NEW CASTLE BIBLE CHURCH	Coliform MCL	Enforcement in process
IL3005595 NEWTOWN MIDDLE SCHOOL	Coliform MCL	Returned to Compliance
IL1530250 OLMSTED	Coliform MCL	Returned to Compliance
IL3096453 PACIFIC BEARING	Coliform MCL	Returned to Compliance
IL1970750 PEOTONE	Coliform MCL	Returned to Compliance
IL3141739 PORTER PARK	Coliform MCL	Returned to Compliance
IL3046318 PRICE BROTHERS COMPANY	Coliform MCL	Enforcement in process
IL3134817 RAYS RANCH HOUSE (134817)	Coliform MCL	Returned to Compliance
IL3113985 RIVERDALE SCHOOL DISTRICT #100	Coliform MCL	Returned to Compliance
IL3132860 SALVATION ARMY EAGLE CREST	Coliform MCL	Returned to Compliance
IL3095174 SHAMROCK GOLF COURSE HAND PUMP	Coliform MCL	Enforcement in process
IL3090290 SHERRARD SENIOR HIGH SCHOOL	Coliform MCL	Returned to Compliance
IL1615750 SILVIS HEIGHTS WATER CORP	Coliform MCL	Returned to Compliance
IL0950500 ST AUGUSTINE	Coliform MCL	Returned to Compliance
IL3024737 STONE CITY VFW	Coliform MCL	Enforcement in process
IL0975280 SUMMIT HOMEOWNERS ASSOCIATION	Coliform MCL	Returned to Compliance
IL1190120 SUNNY SHORES MHP	Coliform MCL	Returned to Compliance
IL1315200 SWEDONA WATER ASSOCIATION	Coliform MCL	Returned to Compliance
IL0971210 TERRACE OAK APARTMENTS	Coliform MCL	Returned to Compliance
IL3019992 THE BACK 40 INC	Coliform MCL	Returned to Compliance
IL3097378 THE OLD MILL	Coliform MCL	Returned to Compliance

Appendix B

Illinois EPA 2005 Annual Compliance

Maximum Contaminant Level and Treatment Technique Violations

Listing by Contaminant

<u>Facility Number and Name</u>	<u>Contaminant</u>	<u>Comments</u>
IL3126508 THE OLD SHAMROCK	Coliform MCL	Enforcement in process
IL3005777 VICTORY BAPTIST CHURCH	Coliform MCL	Enforcement in process
IL3060285 WALNUT GR UNITED METHODIST CHU	Coliform MCL	Enforcement in process
IL1977210 AQUA ILLINOIS-OAKVIEW	Combined Radium MCL	Purchase Water
IL1035100 AQUA ILLINOIS-WOODHAVEN	Combined Radium MCL	Compliance commitment agreement / schedule approved
IL0314120 BARTLETT	Combined Radium MCL	Compliance commitment agreement / schedule approved
IL0894130 BATAVIA	Combined Radium MCL	Compliance commitment agreement / schedule approved
IL0710050 BIGGSVILLE	Combined Radium MCL	Enforcement in process
IL0895125 BREAZEALE MHP	Combined Radium MCL	Enforcement in process
IL0971060 BRIARCREST SBDV HOMEOWNERS ASSOCIATION	Combined Radium MCL	Returned to Compliance
IL0895149 BROADVIEW ACADEMY	Combined Radium MCL	Returned to Compliance
IL0570200 BRYANT	Combined Radium MCL	Enforcement in process
IL0110150 BUREAU JUNCTION	Combined Radium MCL	Compliance commitment agreement / schedule approved
IL1970200 CHANNAHON	Combined Radium MCL	Returned to Compliance
IL1970070 CHANNAHON EAST	Combined Radium MCL	Purchase Water
IL1090200 COLCHESTER	Combined Radium MCL	Returned to Compliance
IL0370051 CORTLAND	Combined Radium MCL	Compliance commitment agreement / schedule approved
IL0375125 CORTLAND CORNERS MHP	Combined Radium MCL	Returned to Compliance
IL0975250 COUNTRYSIDE MANOR SUBDIVISION	Combined Radium MCL	Returned to Compliance
IL0110300 DE PUE	Combined Radium MCL	Returned to Compliance
IL1030200 DIXON	Combined Radium MCL	Compliance commitment agreement / schedule approved
IL1435150 EDELSTEIN WATER COOP	Combined Radium MCL	Enforcement in process

Appendix B

Illinois EPA 2005 Annual Compliance

Maximum Contaminant Level and Treatment Technique Violations

Listing by Contaminant

<u>Facility Number and Name</u>	<u>Contaminant</u>	<u>Comments</u>
IL0890300 ELBURN	Combined Radium MCL	Compliance commitment agreement / schedule approved
IL0975736 ELM OAK MUTUAL WATER SYSTEM	Combined Radium MCL	Compliance commitment agreement / schedule approved
IL0570500 FARMINGTON	Combined Radium MCL	Compliance commitment agreement / schedule approved
IL0995110 FOUR LAKES SUBDIVISION	Combined Radium MCL	Enforcement in process
IL0890350 GENEVA	Combined Radium MCL	Compliance commitment agreement / schedule approved
IL1430350 GLASFORD	Combined Radium MCL	Compliance commitment agreement / schedule approved
IL0975600 GRANDWOOD PARK SUBDIVISION	Combined Radium MCL	Returned to Compliance
IL1550050 GRANVILLE	Combined Radium MCL	Returned to Compliance
IL0890450 HAMPSHIRE	Combined Radium MCL	Compliance commitment agreement / schedule approved
IL1030300 HARMON	Combined Radium MCL	Compliance commitment agreement / schedule approved
IL0975238 HEIDEN GARDENS CONDOS	Combined Radium MCL	Returned to Compliance
IL1970210 HIDDEN VALLEY CREEK APARTMENTS	Combined Radium MCL	Returned to Compliance
IL1235150 HOPEWELL	Combined Radium MCL	Returned to Compliance
IL0995300 IL PRAIRIE ESTATES SUBDIVISION	Combined Radium MCL	Compliance commitment agreement / schedule approved
IL1970450 JOLIET	Combined Radium MCL	Compliance commitment agreement / schedule approved
IL1977930 JOLIET CORRECTIONAL CENTER	Combined Radium MCL	Returned to Compliance
IL1977940 KANKAKEE CORRECTIONAL CENTER	Combined Radium MCL	Returned to Compliance
IL0730650 KEWANEE	Combined Radium MCL	Returned to Compliance
IL1430450 KINGSTON MINES	Combined Radium MCL	Enforcement in process

Appendix B

Illinois EPA 2005 Annual Compliance

Maximum Contaminant Level and Treatment Technique Violations

Listing by Contaminant

<u>Facility Number and Name</u>	<u>Contaminant</u>	<u>Comments</u>
IL0630450 KINSMAN	Combined Radium MCL	Compliance commitment agreement / schedule approved
IL1870050 KIRKWOOD	Combined Radium MCL	Returned to Compliance
IL0970850 LAKE ZURICH	Combined Radium MCL	Compliance commitment agreement / schedule approved
IL1955150 LAKEVIEW HILLS WATER SUPPLY COMPANY	Combined Radium MCL	Returned to Compliance
IL1870100 LITTLE YORK	Combined Radium MCL	Compliance commitment agreement / schedule approved
IL2010150 LOVES PARK	Combined Radium MCL	Returned to Compliance
IL0995336 LYNNWOOD WATER CORPORATION	Combined Radium MCL	Enforcement in process
IL1970550 MANHATTAN	Combined Radium MCL	Compliance commitment agreement / schedule approved
IL0990500 MARSEILLES	Combined Radium MCL	Returned to Compliance
IL0990110 MARSEILLES SOUTH	Combined Radium MCL	Returned to Compliance
IL0990550 MENDOTA	Combined Radium MCL	Returned to Compliance
IL1870150 MONMOUTH	Combined Radium MCL	Returned to Compliance
IL0895319 MOOSEHEART	Combined Radium MCL	Returned to Compliance
IL0935140 MORGAN CREEK	Combined Radium MCL	Returned to Compliance
IL0150200 MOUNT CARROLL	Combined Radium MCL	Returned to Compliance
IL1410350 MOUNT MORRIS	Combined Radium MCL	Enforcement in process
IL0990600 NAPLATE	Combined Radium MCL	Enforcement in process
IL0110700 NEPONSET	Combined Radium MCL	Enforcement in process
IL0890600 NORTH AURORA	Combined Radium MCL	Compliance commitment agreement / schedule approved
IL1550010 OAK PARK ESTATES	Combined Radium MCL	Returned to Compliance
IL0930150 OSWEGO	Combined Radium MCL	Compliance commitment agreement / schedule approved
IL1570350 PERCY	Combined Radium MCL	Returned to Compliance

Appendix B

Illinois EPA 2005 Annual Compliance

Maximum Contaminant Level and Treatment Technique Violations

Listing by Contaminant

<u>Facility Number and Name</u>	<u>Contaminant</u>	<u>Comments</u>
IL0630060 PRAIRIE OAKS ESTS HOMEOWNERS ASSN	Combined Radium MCL	Enforcement in process
IL0970320 PROMONTORY POINTE HOMEOWNERS ASSOCIATION	Combined Radium MCL	Returned to Compliance
IL0971100 PROVIDENCE AT PAINTED LAKES	Combined Radium MCL	Returned to Compliance
IL0990900 RANSOM	Combined Radium MCL	Enforcement in process
IL0914780 REDDICK	Combined Radium MCL	Enforcement in process
IL1970850 ROCKDALE	Combined Radium MCL	Compliance commitment agreement / schedule approved
IL2010300 ROCKFORD	Combined Radium MCL	Compliance commitment agreement / schedule approved
IL1970900 ROMEOVILLE	Combined Radium MCL	Returned to Compliance
IL0991050 SENECA	Combined Radium MCL	Returned to Compliance
IL0890040 SILVER GLEN ESTS	Combined Radium MCL	Compliance commitment agreement / schedule approved
IL0630650 SOUTH WILMINGTON	Combined Radium MCL	Returned to Compliance
IL0111000 SPRING VALLEY	Combined Radium MCL	Returned to Compliance
IL1190950 ST JACOB	Combined Radium MCL	Returned to Compliance
IL1550300 STANDARD	Combined Radium MCL	Compliance commitment agreement / schedule approved
IL0310080 SUNSET MHP	Combined Radium MCL	Compliance commitment agreement / schedule approved
IL0370550 SYCAMORE	Combined Radium MCL	Compliance commitment agreement / schedule approved
IL0970310 THE PRESERVE AT LONG GROVE	Combined Radium MCL	Returned to Compliance
IL1775255 TIMBER RIDGE MOBILE ESTATES	Combined Radium MCL	Compliance commitment agreement / schedule approved
IL0317765 TOUHY MHP	Combined Radium MCL	Returned to Compliance
IL1110900 UNION	Combined Radium MCL	Returned to Compliance

Appendix B

Illinois EPA 2005 Annual Compliance

Maximum Contaminant Level and Treatment Technique Violations

Listing by Contaminant

<u>Facility Number and Name</u>	<u>Contaminant</u>	<u>Comments</u>
IL2015160 UTL INC-COVENTRY CREEK SUBDIVISION	Combined Radium MCL	Compliance commitment agreement / schedule approved
IL1310450 VIOLA	Combined Radium MCL	Returned to Compliance
IL0971770 VOLO	Combined Radium MCL	Returned to Compliance
IL0890110 WASCO SD	Combined Radium MCL	Returned to Compliance
IL0430900 WEST CHICAGO	Combined Radium MCL	Returned to Compliance
IL0990060 WHISPERING PINES MHP	Combined Radium MCL	Compliance commitment agreement / schedule approved
IL0995425 WILDLIFE MHP	Combined Radium MCL	Enforcement in process
IL0990030 WOODSMOKE RANCH ASSOCIATION	Combined Radium MCL	Returned to Compliance
IL0970080 WYNSTONE WATER COMPANY	Combined Radium MCL	Compliance commitment agreement / schedule approved
IL0930250 YORKVILLE	Combined Radium MCL	Compliance commitment agreement / schedule approved
IL1115100 CRYSTAL HEIGHTS ASSOCIATION	Failure to install OCCT	Returned to Compliance
IL1570250 EVANSVILLE	Failure to Profile TT	Compliance commitment agreement / schedule approved
IL0910600 MANTENO	Fecal Coliform MCL	Returned to Compliance
IL1977210 AQUA ILLINOIS-OAKVIEW	Gross Alpha MCL	Purchase Water
IL0894130 BATAVIA	Gross Alpha MCL	Returned to Compliance
IL0710050 BIGGSVILLE	Gross Alpha MCL	Enforcement in process
IL0570200 BRYANT	Gross Alpha MCL	Returned to Compliance
IL1970070 CHANNAHON EAST	Gross Alpha MCL	Purchase Water
IL1090200 COLCHESTER	Gross Alpha MCL	Returned to Compliance
IL0110300 DE PUE	Gross Alpha MCL	Returned to Compliance
IL1030200 DIXON	Gross Alpha MCL	Compliance commitment agreement / schedule approved
IL1435150 EDELSTEIN WATER COOP	Gross Alpha MCL	Returned to Compliance

Appendix B

Illinois EPA 2005 Annual Compliance

Maximum Contaminant Level and Treatment Technique Violations

Listing by Contaminant

<u>Facility Number and Name</u>	<u>Contaminant</u>	<u>Comments</u>
IL0890300 ELBURN	Gross Alpha MCL	Returned to Compliance
IL1430350 GLASFORD	Gross Alpha MCL	Compliance commitment agreement / schedule approved
IL1550050 GRANVILLE	Gross Alpha MCL	Returned to Compliance
IL1030300 HARMON	Gross Alpha MCL	Compliance commitment agreement / schedule approved
IL1235150 HOPEWELL	Gross Alpha MCL	Returned to Compliance
IL0995300 IL PRAIRIE ESTATES SUBDIVISION	Gross Alpha MCL	Compliance commitment agreement / schedule approved
IL1970450 JOLIET	Gross Alpha MCL	Compliance commitment agreement / schedule approved
IL0730650 KEWANEE	Gross Alpha MCL	Returned to Compliance
IL1430450 KINGSTON MINES	Gross Alpha MCL	Enforcement in process
IL1870100 LITTLE YORK	Gross Alpha MCL	Compliance commitment agreement / schedule approved
IL1870150 MONMOUTH	Gross Alpha MCL	Returned to Compliance
IL0110700 NEPONSET	Gross Alpha MCL	Returned to Compliance
IL0890600 NORTH AURORA	Gross Alpha MCL	Returned to Compliance
IL1550010 OAK PARK ESTATES	Gross Alpha MCL	Returned to Compliance
IL0930150 OSWEGO	Gross Alpha MCL	Returned to Compliance
IL0630060 PRAIRIE OAKS ESTS HOMEOWNERS ASSN	Gross Alpha MCL	Returned to Compliance
IL0970320 PROMONTORY POINTE HOMEOWNERS ASSOCIATION	Gross Alpha MCL	Returned to Compliance
IL2010300 ROCKFORD	Gross Alpha MCL	Compliance commitment agreement / schedule approved
IL1550300 STANDARD	Gross Alpha MCL	Returned to Compliance
IL0317765 TOUHY MHP	Gross Alpha MCL	Returned to Compliance
IL1310450 VIOLA	Gross Alpha MCL	Returned to Compliance
IL0430900 WEST CHICAGO	Gross Alpha MCL	Returned to Compliance

Appendix B

Illinois EPA 2005 Annual Compliance

Maximum Contaminant Level and Treatment Technique Violations

Listing by Contaminant

<u>Facility Number and Name</u>	<u>Contaminant</u>	<u>Comments</u>
IL0990060 WHISPERING PINES MHP	Gross Alpha MCL	Returned to Compliance
IL0990030 WOODSMOKE RANCH ASSOCIATION	Gross Alpha MCL	Returned to Compliance
IL0930250 YORKVILLE	Gross Alpha MCL	Compliance commitment agreement / schedule approved
IL1170150 CARLINVILLE	Inadequate DBP Precursor Removal TT	Returned to Compliance
IL1210300 KINMUNDY	Inadequate DBP Precursor Removal TT	Returned to Compliance
IL1175150 PALMYRA-MODESTO WATER COMMISSION	Inadequate DBP Precursor Removal TT	Compliance commitment agreement / schedule approved
IL0210500 PANA	Inadequate DBP Precursor Removal TT	Returned to Compliance
IL1210400 PATOKA	Inadequate DBP Precursor Removal TT	Returned to Compliance
IL1171050 STAUNTON	Inadequate DBP Precursor Removal TT	Returned to Compliance
IL0875510 VIENNA CORRECTIONAL CENTER	Inadequate DBP Precursor Removal TT	Returned to Compliance
IL1171050 STAUNTON	Insufficient Inactivation TT	Returned to Compliance
IL3049031 3M CORDOVA PLANT	Lead Public Education TT	Enforcement in Process
IL0015150 ADAMS COUNTY WATER DISTRICT NO.1	Lead Public Education TT	Returned to Compliance
IL1070050 ATLANTA	Lead Public Education TT	Enforcement in Process
IL3033050 BAXTER HEALTH CARE/HANLINE	Lead Public Education TT	Enforcement in Process
IL3083758 BERNARD DIVISION	Lead Public Education TT	Enforcement in Process
IL3048801 BLACK HAWK SCHOOL SKIP PROGRAM	Lead Public Education TT	Enforcement in Process
IL1990200 COLP	Lead Public Education TT	Enforcement in Process
IL3040402 COM-ED GLENBARD AREA HEADQRTRS	Lead Public Education TT	Enforcement in Process
IL1170300 EAGERVILLE	Lead Public Education TT	Returned to Compliance

Appendix B

Illinois EPA 2005 Annual Compliance

Maximum Contaminant Level and Treatment Technique Violations

Listing by Contaminant

<u>Facility Number and Name</u>	<u>Contaminant</u>	<u>Comments</u>
IL3103028 EXELON NUCLEAR TRAINING CENTER	Lead Public Education TT	Enforcement in Process
IL3130302 GOOD SHEPHERD HOSPITAL	Lead Public Education TT	Enforcement in Process
IL1410250 HILLCREST	Lead Public Education TT	Returned to Compliance
IL3091785 IPSEN INTERNATIONAL	Lead Public Education TT	Enforcement in Process
IL3126581 LAKE CO F P OFFICE HDQTRS #21	Lead Public Education TT	Enforcement in Process
IL3076984 MIDLAND HIGH SCHOOL	Lead Public Education TT	Enforcement in Process
IL1035269 NACHUSA LUTHERAN HOME	Lead Public Education TT	Returned to Compliance
IL3117903 OFFICE CENTER	Lead Public Education TT	Enforcement in Process
IL3074831 PEOPLES GAS-MANLOVE FIELD	Lead Public Education TT	Enforcement in Process
IL0010600 PLAINVILLE	Lead Public Education TT	Returned to Compliance
IL3086751 ROCKLAND OFFICE PLAZA	Lead Public Education TT	Enforcement in Process
IL3047530 STATELINE FOUNDRIES	Lead Public Education TT	Enforcement in Process
IL3117283 TERRACE OAKS TWO	Lead Public Education TT	Enforcement in Process
IL3131060 TOP DIE CASTING CO	Lead Public Education TT	Enforcement in Process
IL0971170 UNIVERSITY ST MARY OF THE LAKE	Lead Public Education TT	Returned to Compliance
IL3042234 WILL COUNTY DEPT OF HIGHWAYS	Lead Public Education TT	Enforcement in Process
IL0111150 WYANET	Lead Public Education TT	Returned to Compliance
IL1570050 BALDWIN	Monthly Combined Filter Effluent TT	Purchase Water
IL0270300 CARLYLE	Monthly Combined Filter Effluent TT	Returned to Compliance
IL1575600 EDEN PWD	Monthly Combined Filter Effluent TT	Purchase Water
IL1570010 EGYPTIAN WATER COMPANY	Monthly Combined Filter Effluent TT	Purchase Water

Appendix B

Illinois EPA 2005 Annual Compliance

Maximum Contaminant Level and Treatment Technique Violations

Listing by Contaminant

<u>Facility Number and Name</u>	<u>Contaminant</u>	<u>Comments</u>
IL3003848 FREEMAN UNITED COAL CO CROWN 2	Monthly Combined Filter Effluent TT	Returned to Compliance
IL3127456 FREEMAN UNITED COAL-CROWN 111	Monthly Combined Filter Effluent TT	Returned to Compliance
IL0910020 LAKE SHANNON	Monthly Combined Filter Effluent TT	Returned to Compliance
IL1570600 SPARTA	Monthly Combined Filter Effluent TT	Compliance commitment agreement / schedule approved
IL1010100 BRIDGEPORT	Nitrate MCL	Returned to Compliance
IL3033977 CHECKERS	Nitrate MCL	Enforcement in process
IL3076471 DYNEGY MIDWEST GENERATION	Nitrate MCL	Returned to Compliance
IL3043018 GUDATS	Nitrate MCL	Enforcement in process
IL3043034 HIALEAH CLUB	Nitrate MCL	Enforcement in process
IL1010150 LAWRENCEVILLE	Nitrate MCL	Returned to Compliance
IL1010150 LAWRENCEVILLE	Nitrate MCL	Returned to Compliance
IL0010400 LIMA	Nitrate MCL	Returned to Compliance
IL3004952 LONGBRANCH SALOON	Nitrate MCL	Enforcement in process
IL3136614 MISS NETTIES DOUBLE J	Nitrate MCL	Enforcement in process
IL1015350 PETROLIA PWD	Nitrate MCL	Returned to Compliance
IL3034074 SQUIRREL PIT	Nitrate MCL	Enforcement in process
IL1010300 SUMNER	Nitrate MCL	Returned to Compliance
IL1470250 HAMMOND	Nitrite MCL	Returned to Compliance
IL0230150 MARTINSVILLE	Nitrite MCL	Returned to Compliance
IL1210400 PATOKA	Simazine MCL	Compliance commitment agreement / schedule approved
IL3127456 FREEMAN UNITED COAL-CROWN 111	Single Combined Filter Effluent TT	Returned to Compliance
IL1815150 ALTO PASS WATER DISTRICT	Total Haloacetic Acids MCL	Returned to Compliance

Appendix B

Illinois EPA 2005 Annual Compliance

Maximum Contaminant Level and Treatment Technique Violations

Listing by Contaminant

<u>Facility Number and Name</u>	<u>Contaminant</u>	<u>Comments</u>
IL1170040 CENTRAL MACOUPIN COUNTY RWD	Total Haloacetic Acids MCL	Returned to Compliance
IL1130400 COOKSVILLE	Total Haloacetic Acids MCL	Compliance commitment agreement / schedule approved
IL0250010 IOLA	Total Haloacetic Acids MCL	Returned to Compliance
IL3064824 MC HENRY CO COLLEGE/S SELCKE	Total Haloacetic Acids MCL	Returned to Compliance
IL1830600 OAKWOOD	Total Haloacetic Acids MCL	Returned to Compliance
IL1210400 PATOKA	Total Haloacetic Acids MCL	Compliance commitment agreement / schedule approved
IL3005413 ROOKS CREEK ELEMENTARY SCHOOL	Total Haloacetic Acids MCL	Returned to Compliance
IL1815150 ALTO PASS WATER DISTRICT	Total Trihalomethane MCL	Returned to Compliance
IL3113423 CATERPILLAR INC/UTIL ENG SUPT	Total Trihalomethane MCL	Returned to Compliance
IL1170040 CENTRAL MACOUPIN COUNTY RWD	Total Trihalomethane MCL	Compliance commitment agreement / schedule approved
IL1170040 CENTRAL MACOUPIN COUNTY RWD	Total Trihalomethane MCL	Returned to Compliance
IL1130400 COOKSVILLE	Total Trihalomethane MCL	Compliance commitment agreement / schedule approved
IL0054360 DONNELSON	Total Trihalomethane MCL	Compliance commitment agreement / schedule approved
IL0250010 IOLA	Total Trihalomethane MCL	Compliance commitment agreement / schedule approved
IL3064824 MC HENRY CO COLLEGE/S SELCKE	Total Trihalomethane MCL	Returned to Compliance
IL0210500 PANA	Total Trihalomethane MCL	Returned to Compliance
IL0054720 PANAMA	Total Trihalomethane MCL	Compliance commitment agreement / schedule approved
IL3005413 ROOKS CREEK ELEMENTARY SCHOOL	Total Trihalomethane MCL	Returned to Compliance
IL0050250 SMITHBORO	Total Trihalomethane MCL	Returned to Compliance

Appendix B

Illinois EPA 2005 Annual Compliance

Maximum Contaminant Level and Treatment Technique Violations

Listing by Contaminant

<u>Facility Number and Name</u>	<u>Contaminant</u>	<u>Comments</u>
IL1171050 STAUNTON	Total Trihalomethane MCL	Returned to Compliance
IL1190080 TRITOWNSHIP WATER DISTRICT	Total Trihalomethane MCL	Returned to Compliance
IL0410350 VILLA GROVE	Total Trihalomethane MCL	Returned to Compliance
IL0670650 WARSAW	Total Trihalomethane MCL	Returned to Compliance
IL1910010 WESTERN WAYNE WATER DISTRICT	Total Trihalomethane MCL	Returned to Compliance
IL3138776 MATHEWS COMPANY	Trichloroethylene MCL	Enforcement in process
IL0490050 ALTAMONT	Turbidity > 1NTU CFE TT	Returned to Compliance
IL0315310 GLENBROOK SD	Turbidity > 1NTU CFE TT	Returned to Compliance
IL0970500 HIGHLAND PARK	Turbidity > 1NTU CFE TT	Returned to Compliance
IL0971250 NORTH CHICAGO	Turbidity > 1NTU CFE TT	Returned to Compliance
IL1615170 CEDAR BROOK ESTATES SUBDIVISION	Water Quality Parameter (Lead/Copper) TT	Returned to Compliance
IL1115250 EASTWOOD MANOR WATER COMPANY	Water Quality Parameter (Lead/Copper) TT	Monitoring ongoing
IL0850020 LONGHOLLOW POINT	Water Quality Parameter (Lead/Copper) TT	Returned to Compliance
IL0450400 VERMILION	Water Quality Parameter (Lead/Copper) TT	Monitoring ongoing

Appendix C

The attached report identifies all public water supplies with maximum contaminant level and treatment technique violations in system name alpha order.

Appendix C

Illinois EPA 2005 Annual Compliance

Maximum Contaminant Level and Treatment Technique Violations

Listing by Water

<u>Facility Number and Name</u>	<u>Contaminant</u>	<u>Comments</u>
IL3049031 3M CORDOVA PLANT	Lead Public Education TT	Enforcement in Process
IL0015150 ADAMS COUNTY WATER DISTRICT NO.1	Lead Public Education TT	Returned to Compliance
IL0490050 ALTAMONT	Turbidity > 1NTU CFE TT	Returned to Compliance
IL1815150 ALTO PASS WATER DISTRICT	Total Haloacetic Acids MCL	Returned to Compliance
IL1815150 ALTO PASS WATER DISTRICT	Total Trihalomethane MCL	Returned to Compliance
IL3148106 ALTO VINEYARD	Coliform MCL	Returned to Compliance
IL1830050 ALVAN	Coliform MCL	Returned to Compliance
IL3113589 AMEREN-CILCO-EASTERN SERVICE CENTER	Coliform MCL	Returned to Compliance
IL0850050 APPLE RIVER	Coliform MCL	Returned to Compliance
IL1830500 AQUA ILLINOIS-INDIANOLA	Coliform MCL	Returned to Compliance
IL1977210 AQUA ILLINOIS-OAKVIEW	Combined Radium MCL	Purchase Water
IL1977210 AQUA ILLINOIS-OAKVIEW	Gross Alpha MCL	Purchase Water
IL1035100 AQUA ILLINOIS-WOODHAVEN	Combined Radium MCL	Compliance commitment agreement / schedule approved
IL3021824 ARGYLE LAKE STATE PARK (21824)	Coliform MCL	Enforcement in process
IL0730200 ATKINSON	Coliform MCL	Returned to Compliance
IL1070050 ATLANTA	Lead Public Education TT	Enforcement in Process
IL1570050 BALDWIN	Monthly Combined Filter Effluent TT	Purchase Water
IL1090050 BARDOLPH	Coliform MCL	Returned to Compliance
IL0314120 BARTLETT	Combined Radium MCL	Compliance commitment agreement / schedule approved
IL0894130 BATAVIA	Combined Radium MCL	Compliance commitment agreement / schedule approved
IL0894130 BATAVIA	Gross Alpha MCL	Returned to Compliance

Appendix C

Illinois EPA 2005 Annual Compliance

Maximum Contaminant Level and Treatment Technique Violations

Listing by Water

<u>Facility Number and Name</u>	<u>Contaminant</u>	<u>Comments</u>
IL3033050 BAXTER HEALTH CARE/HANLINE	Lead Public Education TT	Enforcement in Process
IL3083758 BERNARD DIVISION	Lead Public Education TT	Enforcement in Process
IL3020636 BERTS AT OAKHILL	Coliform MCL	Enforcement in process
IL0710050 BIGGSVILLE	Combined Radium MCL	Enforcement in process
IL0710050 BIGGSVILLE	Gross Alpha MCL	Enforcement in process
IL1015300 BIRDS PINKSTAFF WATER DISTRICT	Coliform MCL	Returned to Compliance
IL3048801 BLACK HAWK SCHOOL SKIP PROGRAM	Lead Public Education TT	Enforcement in Process
IL0630050 BRACEVILLE	Coliform (Acute) MCL	Returned to Compliance
IL0630050 BRACEVILLE	Coliform MCL	Returned to Compliance
IL0895125 BREAZEALE MHP	Combined Radium MCL	Enforcement in process
IL0971060 BRIARCREST SBDV HOMEOWNERS ASSOCIATION	Combined Radium MCL	Returned to Compliance
IL1010100 BRIDGEPORT	Nitrate MCL	Returned to Compliance
IL0895149 BROADVIEW ACADEMY	Combined Radium MCL	Returned to Compliance
IL0570200 BRYANT	Coliform MCL	Returned to Compliance
IL0570200 BRYANT	Combined Radium MCL	Enforcement in process
IL0570200 BRYANT	Gross Alpha MCL	Returned to Compliance
IL0110150 BUREAU JUNCTION	Combined Radium MCL	Compliance commitment agreement / schedule approved
IL3102210 BUSSE WOODS SOUTH 1231	Coliform MCL	Enforcement in process
IL3048959 BYRON HILLS GOLF COURSE	Coliform MCL	Returned to Compliance
IL1170150 CARLINVILLE	Inadequate DBP Precursor Removal TT	Returned to Compliance

Appendix C

Illinois EPA 2005 Annual Compliance

Maximum Contaminant Level and Treatment Technique Violations

Listing by Water

<u>Facility Number and Name</u>	<u>Contaminant</u>	<u>Comments</u>
IL3101360 CARLSON SPGS STABLES 5253	Coliform MCL	Returned to Compliance
IL0270300 CARLYLE	Monthly Combined Filter Effluent TT	Returned to Compliance
IL3117895 CAT TECH CENTER	Coliform MCL	Returned to Compliance
IL3113423 CATERPILLAR INC/UTIL ENG SUPT	Total Trihalomethane MCL	Returned to Compliance
IL1615170 CEDAR BROOK ESTATES SUBDIVISION	Water Quality Parameter (Lead/Copper) TT	Returned to Compliance
IL1170040 CENTRAL MACOUPIN COUNTY RWD	Total Haloacetic Acids MCL	Returned to Compliance
IL1170040 CENTRAL MACOUPIN COUNTY RWD	Total Trihalomethane MCL	Compliance commitment agreement / schedule approved
IL1170040 CENTRAL MACOUPIN COUNTY RWD	Total Trihalomethane MCL	Returned to Compliance
IL1970200 CHANNAHON	Combined Radium MCL	Returned to Compliance
IL1970070 CHANNAHON EAST	Combined Radium MCL	Purchase Water
IL1970070 CHANNAHON EAST	Gross Alpha MCL	Purchase Water
IL1670300 CHATHAM	Coliform MCL	Returned to Compliance
IL3033977 CHECKERS	Nitrate MCL	Enforcement in process
IL1430200 CHILLICOTHE	Coliform MCL	Returned to Compliance
IL1910050 CISNE	Coliform MCL	Returned to Compliance
IL0250050 CLAY CITY	Coliform MCL	Returned to Compliance
IL1090200 COLCHESTER	Coliform MCL	Returned to Compliance
IL1090200 COLCHESTER	Combined Radium MCL	Returned to Compliance
IL1090200 COLCHESTER	Gross Alpha MCL	Returned to Compliance
IL1990200 COLP	Lead Public Education TT	Enforcement in Process

Appendix C

Illinois EPA 2005 Annual Compliance

Maximum Contaminant Level and Treatment Technique Violations

Listing by Water

<u>Facility Number and Name</u>	<u>Contaminant</u>	<u>Comments</u>
IL3040402 COM-ED GLENBARD AREA HEADQRTS	Lead Public Education TT	Enforcement in Process
IL3138594 CONDITS RANCH EAST WELL	Coliform MCL	Enforcement in process
IL1130400 COOKSVILLE	Total Haloacetic Acids MCL	Compliance commitment agreement / schedule approved
IL1130400 COOKSVILLE	Total Trihalomethane MCL	Compliance commitment agreement / schedule approved
IL0370051 CORTLAND	Combined Radium MCL	Compliance commitment agreement / schedule approved
IL0375125 CORTLAND CORNERS MHP	Combined Radium MCL	Returned to Compliance
IL0975250 COUNTRYSIDE MANOR SUBDIVISION	Combined Radium MCL	Returned to Compliance
IL1115100 CRYSTAL HEIGHTS ASSOCIATION	Failure to install OCCT	Returned to Compliance
IL1975480 CRYSTAL LAWNS SUBDIVISION	Coliform MCL	Returned to Compliance
IL3109876 CUSTERS KEG	Coliform MCL	Returned to Compliance
IL0110300 DE PUE	Combined Radium MCL	Returned to Compliance
IL0110300 DE PUE	Gross Alpha MCL	Returned to Compliance
IL1030200 DIXON	Combined Radium MCL	Compliance commitment agreement / schedule approved
IL1030200 DIXON	Gross Alpha MCL	Compliance commitment agreement / schedule approved
IL0054360 DONNELSON	Total Trihalomethane MCL	Compliance commitment agreement / schedule approved
IL3110932 DOUBLE TREE HILLS	Coliform MCL	Enforcement in process
IL3076471 DYNEGY MIDWEST GENERATION	Nitrate MCL	Returned to Compliance
IL1170300 EAGERVILLE	Lead Public Education TT	Returned to Compliance
IL1115250 EASTWOOD MANOR WATER COMPANY	Water Quality Parameter (Lead/Copper) TT	Monitoring ongoing

Appendix C

Illinois EPA 2005 Annual Compliance

Maximum Contaminant Level and Treatment Technique Violations

Listing by Water

<u>Facility Number and Name</u>	<u>Contaminant</u>	<u>Comments</u>
IL1435150 EDELSTEIN WATER COOP	Combined Radium MCL	Enforcement in process
IL1435150 EDELSTEIN WATER COOP	Gross Alpha MCL	Returned to Compliance
IL1575600 EDEN PWD	Monthly Combined Filter Effluent TT	Purchase Water
IL1570010 EGYPTIAN WATER COMPANY	Monthly Combined Filter Effluent TT	Purchase Water
IL0890300 ELBURN	Combined Radium MCL	Compliance commitment agreement / schedule approved
IL0890300 ELBURN	Gross Alpha MCL	Returned to Compliance
IL0975736 ELM OAK MUTUAL WATER SYSTEM	Combined Radium MCL	Compliance commitment agreement / schedule approved
IL0670010 ELVASTON	Coliform MCL	Returned to Compliance
IL3016477 ESPENSCHIED MEMORIAL PARK	Coliform MCL	Returned to Compliance
IL1570250 EVANSVILLE	Failure to Profile TT	Compliance commitment agreement / schedule approved
IL3103028 EXELON NUCLEAR TRAINING CENTER	Lead Public Education TT	Enforcement in Process
IL3122804 FAIRVIEW UNITED METHODIST CH	Coliform (Acute) MCL	Enforcement in Process
IL0570500 FARMINGTON	Combined Radium MCL	Compliance commitment agreement / schedule approved
IL3135293 FIRST CHURCH OF THE NAZARENE (135293)	Coliform MCL	Returned to Compliance
IL0995110 FOUR LAKES SUBDIVISION	Combined Radium MCL	Enforcement in process
IL3136945 FREEDOM OIL COMPANY (136945)	Coliform MCL	Enforcement in process
IL3003848 FREEMAN UNITED COAL CO CROWN 2	Monthly Combined Filter Effluent TT	Returned to Compliance
IL3127456 FREEMAN UNITED COAL-CROWN 111	Monthly Combined Filter Effluent TT	Returned to Compliance

Appendix C

Illinois EPA 2005 Annual Compliance

Maximum Contaminant Level and Treatment Technique Violations

Listing by Water

<u>Facility Number and Name</u>	<u>Contaminant</u>	<u>Comments</u>
IL3127456 FREEMAN UNITED COAL-CROWN 111	Single Combined Filter Effluent TT	Returned to Compliance
IL0890350 GENEVA	Combined Radium MCL	Compliance commitment agreement / schedule approved
IL1430350 GLASFORD	Coliform MCL	Returned to Compliance
IL1430350 GLASFORD	Combined Radium MCL	Compliance commitment agreement / schedule approved
IL1430350 GLASFORD	Gross Alpha MCL	Compliance commitment agreement / schedule approved
IL0315310 GLENBROOK SD	Turbidity > 1NTU CFE TT	Returned to Compliance
IL3024596 GOLD HILLS GOLF COURSE	Coliform MCL	Returned to Compliance
IL3130302 GOOD SHEPHERD HOSPITAL	Lead Public Education TT	Enforcement in Process
IL0975600 GRANDWOOD PARK SUBDIVISION	Combined Radium MCL	Returned to Compliance
IL1550050 GRANVILLE	Combined Radium MCL	Returned to Compliance
IL1550050 GRANVILLE	Gross Alpha MCL	Returned to Compliance
IL3043018 GUDATS	Nitrate MCL	Enforcement in process
IL0670400 HAMILTON	Coliform MCL	Returned to Compliance
IL1470250 HAMMOND	Nitrite MCL	Returned to Compliance
IL0890450 HAMPSHIRE	Combined Radium MCL	Compliance commitment agreement / schedule approved
IL3138941 HARDYS REINDEER RANCH	Coliform MCL	Returned to Compliance
IL1030300 HARMON	Combined Radium MCL	Compliance commitment agreement / schedule approved
IL1030300 HARMON	Gross Alpha MCL	Compliance commitment agreement / schedule approved
IL0970450 HAWTHORN WOODS	Coliform MCL	Returned to Compliance
IL0975238 HEIDEN GARDENS CONDOS	Combined Radium MCL	Returned to Compliance
IL0950250 HENDERSON	Coliform MCL	Returned to Compliance

Appendix C

Illinois EPA 2005 Annual Compliance

Maximum Contaminant Level and Treatment Technique Violations

Listing by Water

<u>Facility Number and Name</u>	<u>Contaminant</u>	<u>Comments</u>
IL3043034 HIALEAH CLUB	Nitrate MCL	Enforcement in process
IL1795495 HIATTS HIDEAWAY MHP	Coliform MCL	Returned to Compliance
IL1970210 HIDDEN VALLEY CREEK APARTMENTS	Combined Radium MCL	Returned to Compliance
IL0970500 HIGHLAND PARK	Turbidity > 1NTU CFE TT	Returned to Compliance
IL1410250 HILLCREST	Lead Public Education TT	Returned to Compliance
IL3126565 HIS REST BED & BREAKFAST	Coliform (Acute) MCL	Returned to Compliance
IL1235150 HOPEWELL	Combined Radium MCL	Returned to Compliance
IL1235150 HOPEWELL	Gross Alpha MCL	Returned to Compliance
IL3052563 I&I STEAK HOUSE	Coliform MCL	Returned to Compliance
IL0995300 IL PRAIRIE ESTATES SUBDIVISION	Combined Radium MCL	Compliance commitment agreement / schedule approved
IL0995300 IL PRAIRIE ESTATES SUBDIVISION	Gross Alpha MCL	Compliance commitment agreement / schedule approved
IL3141671 INDIAN HILLS FOREST PRESERVE	Coliform MCL	Enforcement in process
IL0250010 IOLA	Total Haloacetic Acids MCL	Returned to Compliance
IL0250010 IOLA	Total Trihalomethane MCL	Compliance commitment agreement / schedule approved
IL3091785 IPSEN INTERNATIONAL	Lead Public Education TT	Enforcement in Process
IL3049296 ISLAND MARINA	Coliform MCL	Returned to Compliance
IL0830250 JERSEYVILLE	Coliform MCL	Returned to Compliance
IL3138958 JOHN DOUGH/MY PLACE	Coliform (Acute) MCL	Enforcement in process
IL3097444 JOHN&NAOMIS CORNER TAP	Coliform MCL	Returned to Compliance
IL1970450 JOLIET	Combined Radium MCL	Compliance commitment agreement / schedule approved
IL1970450 JOLIET	Gross Alpha MCL	Compliance commitment agreement / schedule approved

Appendix C

Illinois EPA 2005 Annual Compliance

Maximum Contaminant Level and Treatment Technique Violations

Listing by Water

<u>Facility Number and Name</u>	<u>Contaminant</u>	<u>Comments</u>
IL1977930 JOLIET CORRECTIONAL CENTER	Combined Radium MCL	Returned to Compliance
IL3116095 JUBILEE CAFE	Coliform MCL	Returned to Compliance
IL1977940 KANKAKEE CORRECTIONAL CENTER	Combined Radium MCL	Returned to Compliance
IL0730650 KEWANEE	Combined Radium MCL	Returned to Compliance
IL0730650 KEWANEE	Gross Alpha MCL	Returned to Compliance
IL3004309 KILBUCK CREEK F P EDGEWOOD	Coliform MCL	Returned to Compliance
IL3004283 KILBUCK CREEK FP UPPER ENT	Coliform MCL	Returned to Compliance
IL1430450 KINGSTON MINES	Combined Radium MCL	Enforcement in process
IL1430450 KINGSTON MINES	Gross Alpha MCL	Enforcement in process
IL1210300 KINMUNDY	Inadequate DBP Precursor Removal TT	Returned to Compliance
IL0630450 KINSMAN	Combined Radium MCL	Compliance commitment agreement / schedule approved
IL1870050 KIRKWOOD	Combined Radium MCL	Returned to Compliance
IL3126532 KOUNTRY KORNER (126532)	Coliform MCL	Returned to Compliance
IL3126581 LAKE CO F P OFFICE HDQTRS #21	Lead Public Education TT	Enforcement in Process
IL1110400 LAKE IN THE HILLS	Coliform MCL	Returned to Compliance
IL0910020 LAKE SHANNON	Monthly Combined Filter Effluent TT	Returned to Compliance
IL0970850 LAKE ZURICH	Combined Radium MCL	Compliance commitment agreement / schedule approved
IL1955150 LAKEVIEW HILLS WATER SUPPLY COMPANY	Combined Radium MCL	Returned to Compliance
IL1010150 LAWRENCEVILLE	Nitrate MCL	Returned to Compliance
IL1010150 LAWRENCEVILLE	Nitrate MCL	Returned to Compliance

Appendix C

Illinois EPA 2005 Annual Compliance

Maximum Contaminant Level and Treatment Technique Violations

Listing by Water

<u>Facility Number and Name</u>	<u>Contaminant</u>	<u>Comments</u>
IL0010400 LIMA	Nitrate MCL	Returned to Compliance
IL1870100 LITTLE YORK	Combined Radium MCL	Compliance commitment agreement / schedule approved
IL1870100 LITTLE YORK	Gross Alpha MCL	Compliance commitment agreement / schedule approved
IL3004952 LONGBRANCH SALOON	Nitrate MCL	Enforcement in process
IL0850020 LONGHOLLOW POINT	Water Quality Parameter (Lead/Copper) TT	Returned to Compliance
IL3085902 LOUD THUNDER FOREST PRESERVE B	Coliform MCL	Enforcement in process
IL2010150 LOVES PARK	Combined Radium MCL	Returned to Compliance
IL0995336 LYNNWOOD WATER CORPORATION	Combined Radium MCL	Enforcement in process
IL3131177 MALIBU BAY LOUNGE	Coliform MCL	Enforcement in process
IL1970550 MANHATTAN	Combined Radium MCL	Compliance commitment agreement / schedule approved
IL1470300 MANSFIELD	Coliform MCL	Returned to Compliance
IL0910600 MANTENO	Coliform MCL	Returned to Compliance
IL0910600 MANTENO	Fecal Coliform MCL	Returned to Compliance
IL0311770 MARKHAM	Coliform MCL	Returned to Compliance
IL0990500 MARSEILLES	Combined Radium MCL	Returned to Compliance
IL0990110 MARSEILLES SOUTH	Combined Radium MCL	Returned to Compliance
IL3006940 MARSHALL CO SPORTSMENS CLUB (6940)	Coliform MCL	Enforcement in process
IL3006940 MARSHALL CO SPORTSMENS CLUB (6940)	Coliform MCL	Returned to Compliance
IL0230150 MARTINSVILLE	Nitrite MCL	Returned to Compliance
IL1630800 MASCOUTAH	Coliform MCL	Returned to Compliance
IL0490300 MASON	Coliform MCL	Returned to Compliance

Appendix C

Illinois EPA 2005 Annual Compliance

Maximum Contaminant Level and Treatment Technique Violations

Listing by Water

<u>Facility Number and Name</u>	<u>Contaminant</u>	<u>Comments</u>
IL3138776 MATHEWS COMPANY	Trichloroethylene MCL	Enforcement in process
IL0311800 MATTESON	Coliform MCL	Returned to Compliance
IL3064824 MC HENRY CO COLLEGE/S SELCKE	Total Haloacetic Acids MCL	Returned to Compliance
IL3064824 MC HENRY CO COLLEGE/S SELCKE	Total Trihalomethane MCL	Returned to Compliance
IL3032979 MCDUCKS	Coliform MCL	Enforcement in process
IL3003483 MCMILLENS CAMP-A-WHILE	Coliform MCL	Returned to Compliance
IL0970110 MDWS AT LKMR SULLIVAN LAKE SUBDIVISION	Coliform MCL	Returned to Compliance
IL0990550 MENDOTA	Combined Radium MCL	Returned to Compliance
IL3110957 MESSIAH LUTHERAN CHURCH (110957)	Coliform MCL	Enforcement in process
IL3076984 MIDLAND HIGH SCHOOL	Lead Public Education TT	Enforcement in Process
IL3136614 MISS NETTIES DOUBLE J	Nitrate MCL	Enforcement in process
IL1870150 MONMOUTH	Combined Radium MCL	Returned to Compliance
IL1870150 MONMOUTH	Gross Alpha MCL	Returned to Compliance
IL1350020 MONTGOMERY COUNTY WATER COMPANY	Coliform MCL	Returned to Compliance
IL3123182 MOON GLO	Coliform MCL	Returned to Compliance
IL0895319 MOOSEHEART	Combined Radium MCL	Returned to Compliance
IL0935140 MORGAN CREEK	Combined Radium MCL	Returned to Compliance
IL1790500 MORTON	Coliform MCL	Returned to Compliance
IL0150200 MOUNT CARROLL	Combined Radium MCL	Returned to Compliance
IL1410350 MOUNT MORRIS	Combined Radium MCL	Enforcement in process
IL0090100 MOUNT STERLING	Coliform MCL	Returned to Compliance

Appendix C

Illinois EPA 2005 Annual Compliance

Maximum Contaminant Level and Treatment Technique Violations

Listing by Water

<u>Facility Number and Name</u>	<u>Contaminant</u>	<u>Comments</u>
IL3094672 MURPHYS PARKSIDE CAMPGROUND	Coliform MCL	Returned to Compliance
IL1035269 NACHUSA LUTHERAN HOME	Lead Public Education TT	Returned to Compliance
IL0990600 NAPLATE	Combined Radium MCL	Enforcement in process
IL0110700 NEPONSET	Combined Radium MCL	Enforcement in process
IL0110700 NEPONSET	Gross Alpha MCL	Returned to Compliance
IL3010215 NEW CASTLE BIBLE CHURCH	Coliform MCL	Enforcement in process
IL3005595 NEWTOWN MIDDLE SCHOOL	Coliform MCL	Returned to Compliance
IL0890600 NORTH AURORA	Combined Radium MCL	Compliance commitment agreement / schedule approved
IL0890600 NORTH AURORA	Gross Alpha MCL	Returned to Compliance
IL0971250 NORTH CHICAGO	Turbidity > 1NTU CFE TT	Returned to Compliance
IL1550010 OAK PARK ESTATES	Combined Radium MCL	Returned to Compliance
IL1550010 OAK PARK ESTATES	Gross Alpha MCL	Returned to Compliance
IL1830600 OAKWOOD	Total Haloacetic Acids MCL	Returned to Compliance
IL3117903 OFFICE CENTER	Lead Public Education TT	Enforcement in Process
IL1530250 OLMSTED	Coliform MCL	Returned to Compliance
IL0930150 OSWEGO	Combined Radium MCL	Compliance commitment agreement / schedule approved
IL0930150 OSWEGO	Gross Alpha MCL	Returned to Compliance
IL3096453 PACIFIC BEARING	Coliform MCL	Returned to Compliance
IL1175150 PALMYRA-MODESTO WATER COMMISSION	Inadequate DBP Precursor Removal TT	Compliance commitment agreement / schedule approved
IL0210500 PANA	Inadequate DBP Precursor Removal TT	Returned to Compliance
IL0210500 PANA	Total Trihalomethane MCL	Returned to Compliance

Appendix C

Illinois EPA 2005 Annual Compliance

Maximum Contaminant Level and Treatment Technique Violations

Listing by Water

<u>Facility Number and Name</u>	<u>Contaminant</u>	<u>Comments</u>
IL0054720 PANAMA	Total Trihalomethane MCL	Compliance commitment agreement / schedule approved
IL1210400 PATOKA	Inadequate DBP Precursor Removal TT	Returned to Compliance
IL1210400 PATOKA	Simazine MCL	Compliance commitment agreement / schedule approved
IL1210400 PATOKA	Total Haloacetic Acids MCL	Compliance commitment agreement / schedule approved
IL3074831 PEOPLES GAS-MANLOVE FIELD	Lead Public Education TT	Enforcement in Process
IL1970750 PEOTONE	Coliform (Acute) MCL	Returned to Compliance
IL1970750 PEOTONE	Coliform MCL	Returned to Compliance
IL1570350 PERCY	Combined Radium MCL	Returned to Compliance
IL1015350 PETROLIA PWD	Nitrate MCL	Returned to Compliance
IL0010600 PLAINVILLE	Lead Public Education TT	Returned to Compliance
IL3141739 PORTER PARK	Coliform MCL	Returned to Compliance
IL0630060 PRAIRIE OAKS ESTS HOMEOWNERS ASSN	Combined Radium MCL	Enforcement in process
IL0630060 PRAIRIE OAKS ESTS HOMEOWNERS ASSN	Gross Alpha MCL	Returned to Compliance
IL3046318 PRICE BROTHERS COMPANY	Coliform MCL	Enforcement in process
IL0970320 PROMONTORY POINTE HOMEOWNERS ASSOCIATION	Combined Radium MCL	Returned to Compliance
IL0970320 PROMONTORY POINTE HOMEOWNERS ASSOCIATION	Gross Alpha MCL	Returned to Compliance
IL0971100 PROVIDENCE AT PAINTED LAKES	Combined Radium MCL	Returned to Compliance
IL0990900 RANSOM	Combined Radium MCL	Enforcement in process
IL3134817 RAYS RANCH HOUSE (134817)	Coliform MCL	Returned to Compliance
IL0914780 REDDICK	Combined Radium MCL	Enforcement in process

Appendix C

Illinois EPA 2005 Annual Compliance

Maximum Contaminant Level and Treatment Technique Violations

Listing by Water

<u>Facility Number and Name</u>	<u>Contaminant</u>	<u>Comments</u>
IL3113985 RIVERDALE SCHOOL DISTRICT #100	Coliform MCL	Returned to Compliance
IL1970850 ROCKDALE	Combined Radium MCL	Compliance commitment agreement / schedule approved
IL2010300 ROCKFORD	Combined Radium MCL	Compliance commitment agreement / schedule approved
IL2010300 ROCKFORD	Gross Alpha MCL	Compliance commitment agreement / schedule approved
IL3086751 ROCKLAND OFFICE PLAZA	Lead Public Education TT	Enforcement in Process
IL1970900 ROMEOVILLE	Combined Radium MCL	Returned to Compliance
IL3005413 ROOKS CREEK ELEMENTARY SCHOOL	Total Haloacetic Acids MCL	Returned to Compliance
IL3005413 ROOKS CREEK ELEMENTARY SCHOOL	Total Trihalomethane MCL	Returned to Compliance
IL3132860 SALVATION ARMY EAGLE CREST	Coliform MCL	Returned to Compliance
IL0991050 SENECA	Combined Radium MCL	Returned to Compliance
IL3095174 SHAMROCK GOLF COURSE HAND PUMP	Coliform MCL	Enforcement in process
IL3090290 SHERRARD SENIOR HIGH SCHOOL	Coliform MCL	Returned to Compliance
IL0890040 SILVER GLEN ESTS	Combined Radium MCL	Compliance commitment agreement / schedule approved
IL1615750 SILVIS HEIGHTS WATER CORP	Coliform MCL	Returned to Compliance
IL0050250 SMITHBORO	Total Trihalomethane MCL	Returned to Compliance
IL0630650 SOUTH WILMINGTON	Combined Radium MCL	Returned to Compliance
IL1570600 SPARTA	Monthly Combined Filter Effluent TT	Compliance commitment agreement / schedule approved
IL0111000 SPRING VALLEY	Combined Radium MCL	Returned to Compliance
IL3034074 SQUIRREL PIT	Nitrate MCL	Enforcement in process

Appendix C

Illinois EPA 2005 Annual Compliance

Maximum Contaminant Level and Treatment Technique Violations

Listing by Water

<u>Facility Number and Name</u>	<u>Contaminant</u>	<u>Comments</u>
IL0950500 ST AUGUSTINE	Coliform MCL	Returned to Compliance
IL1190950 ST JACOB	Combined Radium MCL	Returned to Compliance
IL1550300 STANDARD	Combined Radium MCL	Compliance commitment agreement / schedule approved
IL1550300 STANDARD	Gross Alpha MCL	Returned to Compliance
IL3047530 STATELINE FOUNDRIES	Lead Public Education TT	Enforcement in Process
IL1171050 STAUNTON	Inadequate DBP Precursor Removal TT	Returned to Compliance
IL1171050 STAUNTON	Insufficient Inactivation TT	Returned to Compliance
IL1171050 STAUNTON	Total Trihalomethane MCL	Returned to Compliance
IL3024737 STONE CITY VFW	Coliform MCL	Enforcement in process
IL0975280 SUMMIT HOMEOWNERS ASSOCIATION	Coliform MCL	Returned to Compliance
IL1010300 SUMNER	Nitrate MCL	Returned to Compliance
IL1190120 SUNNY SHORES MHP	Coliform MCL	Returned to Compliance
IL0310080 SUNSET MHP	Combined Radium MCL	Compliance commitment agreement / schedule approved
IL1315200 SWEDONA WATER ASSOCIATION	Coliform MCL	Returned to Compliance
IL0370550 SYCAMORE	Combined Radium MCL	Compliance commitment agreement / schedule approved
IL0971210 TERRACE OAK APARTMENTS	Coliform MCL	Returned to Compliance
IL3117283 TERRACE OAKS TWO	Lead Public Education TT	Enforcement in Process
IL3019992 THE BACK 40 INC	Coliform MCL	Returned to Compliance
IL3097378 THE OLD MILL	Coliform MCL	Returned to Compliance
IL3126508 THE OLD SHAMROCK	Coliform MCL	Enforcement in process
IL0970310 THE PRESERVE AT LONG GROVE	Combined Radium MCL	Returned to Compliance

Appendix C

Illinois EPA 2005 Annual Compliance

Maximum Contaminant Level and Treatment Technique Violations

Listing by Water

<u>Facility Number and Name</u>	<u>Contaminant</u>	<u>Comments</u>
IL1775255 TIMBER RIDGE MOBILE ESTATES	Combined Radium MCL	Compliance commitment agreement / schedule approved
IL3131060 TOP DIE CASTING CO	Lead Public Education TT	Enforcement in Process
IL0317765 TOUHY MHP	Combined Radium MCL	Returned to Compliance
IL0317765 TOUHY MHP	Gross Alpha MCL	Returned to Compliance
IL1190080 TRITOWNSHIP WATER DISTRICT	Total Trihalomethane MCL	Returned to Compliance
IL1110900 UNION	Combined Radium MCL	Returned to Compliance
IL0971170 UNIVERSITY ST MARY OF THE LAKE	Lead Public Education TT	Returned to Compliance
IL2015160 UTL INC-COVENTRY CREEK SUBDIVISION	Combined Radium MCL	Compliance commitment agreement / schedule approved
IL0450400 VERMILION	Water Quality Parameter (Lead/Copper) TT	Monitoring ongoing
IL3005777 VICTORY BAPTIST CHURCH	Coliform MCL	Enforcement in process
IL0875510 VIENNA CORRECTIONAL CENTER	Inadequate DBP Precursor Removal TT	Returned to Compliance
IL0410350 VILLA GROVE	Total Trihalomethane MCL	Returned to Compliance
IL1310450 VIOLA	Combined Radium MCL	Returned to Compliance
IL1310450 VIOLA	Gross Alpha MCL	Returned to Compliance
IL0971770 VOLO	Combined Radium MCL	Returned to Compliance
IL3060285 WALNUT GR UNITED METHODIST CHU	Coliform MCL	Enforcement in process
IL0670650 WARSAW	Total Trihalomethane MCL	Returned to Compliance
IL0890110 WASCO SD	Combined Radium MCL	Returned to Compliance
IL0430900 WEST CHICAGO	Combined Radium MCL	Returned to Compliance
IL0430900 WEST CHICAGO	Gross Alpha MCL	Returned to Compliance

Appendix C

Illinois EPA 2005 Annual Compliance

Maximum Contaminant Level and Treatment Technique Violations

Listing by Water

<u>Facility Number and Name</u>	<u>Contaminant</u>	<u>Comments</u>
IL1910010 WESTERN WAYNE WATER DISTRICT	Total Trihalomethane MCL	Returned to Compliance
IL0990060 WHISPERING PINES MHP	Combined Radium MCL	Compliance commitment agreement / schedule approved
IL0990060 WHISPERING PINES MHP	Gross Alpha MCL	Returned to Compliance
IL0995425 WILDLIFE MHP	Combined Radium MCL	Enforcement in process
IL3042234 WILL COUNTY DEPT OF HIGHWAYS	Lead Public Education TT	Enforcement in Process
IL0990030 WOODSMOKE RANCH ASSOCIATION	Combined Radium MCL	Returned to Compliance
IL0990030 WOODSMOKE RANCH ASSOCIATION	Gross Alpha MCL	Returned to Compliance
IL0111150 WYANET	Lead Public Education TT	Returned to Compliance
IL0970080 WYNSTONE WATER COMPANY	Combined Radium MCL	Compliance commitment agreement / schedule approved
IL0930250 YORKVILLE	Combined Radium MCL	Compliance commitment agreement / schedule approved
IL0930250 YORKVILLE	Gross Alpha MCL	Compliance commitment agreement / schedule Approved