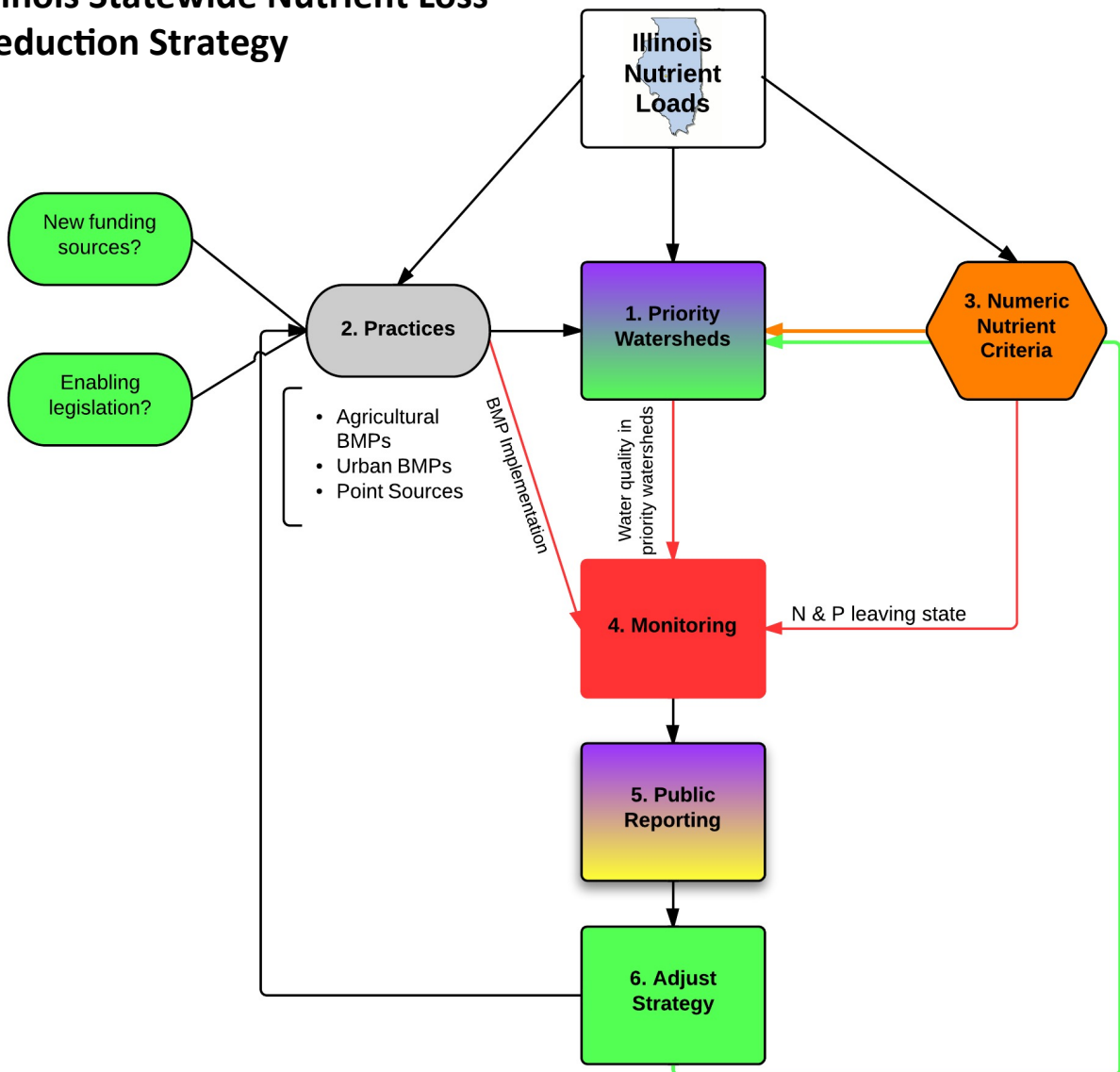


Illinois Statewide Nutrient Loss Reduction Strategy



Responsible Party:

- 1. Policy Working Group** (green) and **IEPA** (purple)
- Many organizations
 - Agricultural BMPS
 - **Cost Share Coordination Subcommittee—NRSC Technical Committee**
 - **Agriculture Water Quality Partnership Forum**
 - **Urban Stormwater Working Group**
 - Point Source Permits—**IEPA**
- 3. Numeric Nutrient Criteria Science Advisory Committee** (orange)
- 4. Monitoring—Illinois Water Monitoring Council** (red)
- Public Reporting—**IEPA** and IDA (yellow)
 - Biennial Meeting
 - Biennial Report
- Adjust Strategy/Adaptive Management—based off annual reports, determined by **Policy Working Group**