

NPDES Permit No. IL0004707
Notice No. 6331c

Public Notice Beginning Date: **October 10, 2013**

Public Notice Ending Date: **November 12, 2013**

National Pollutant Discharge Elimination System (NPDES)
Permit Program

Draft Renewed and Modified NPDES Permit to Discharge into Waters of the State

Public Notice/Fact Sheet Issued By:

Illinois Environmental Protection Agency
Bureau of Water, Division of Water Pollution Control
Permit Section
1021 North Grand Avenue East
Post Office Box 19276
Springfield, Illinois 62794-9276
217/782-0610

Name and Address of Discharger:

Springfield Coal Company, L.L.C.
P.O. Box 9320
Springfield, IL 62791-9320

Name and Address of Facility:

Springfield Coal Company, L.L.C.
Orient No. 6 Mine
2.5 miles southeast of Waltonville
(Jefferson County)

The Illinois Environmental Protection Agency (IEPA) has made a tentative determination to issue an NPDES permit to discharge into waters of the state and has prepared a draft permit and associated fact sheet for the above named discharger. The Public Notice period will begin and end on the dates indicated in the heading of this Public Notice/Fact Sheet. Comments will be accepted until the Public Notice period ending date indicated above, unless a request for an extension of the original comment period is granted by the Agency. Interested persons are invited to submit written comments on the draft permit to the IEPA at the above address. Commentors shall provide his or her name and address and the nature of the issues proposed to be raised and the evidence proposed to be presented with regards to those issues. Commentors may include a request for public hearing. The NPDES permit and notice number(s) must appear on each comment page.

The application, engineer's review notes, Public Notice/Fact Sheet, draft permit, comments received, and other documents are available for inspection and may be copied at the IEPA between 9:30 a.m. and 3:30 p.m. Monday through Friday when scheduled by the interested person.

As provided in Section 309.115(a) of the Act, any person may submit a request for a public hearing and if such written comments or requests indicate a significant degree of public interest in the draft permit, the permitting authority may, at its discretion, hold a public hearing. The Agency shall issue public notice of such hearing no less than thirty (30) days prior to the date of such hearing in the manner described by Sections 309.109 through 309.112 of the Act for public notice. The Agency's responses to written and/or oral comments will be provided in the Responsiveness Summary provided when the final permit is issued.

The applicant operates and is reclaiming the surface facilities of a previous underground coal mine (SIC 1222). Mine operations result in the discharge of alkaline mine drainage, reclamation area drainage and stormwater discharges.

Public comments are invited on the following proposed modifications incorporated into this Permit renewal:

Operations plan was revised to incorporate facilities in support of site reclamation.

Reclamation (abandonment) plan was revised to allow for treatment of refuse with reduced cover.

This facility has six (6) existing discharges which are located in Jefferson County, Illinois. The following information identifies the discharge points, receiving streams, and stream classifications:

<u>Outfall</u>	<u>Receiving Stream</u>	<u>Latitude (North)</u>	<u>Longitude (West)</u>
002	Buck Creek	38° 11' 46"	89° 01' 51"
003	Unnamed tributary to Rend Lake	38° 11' 15"	89° 01' 15"
004	Unnamed tributary to Rend Lake	38° 11' 00"	89° 01' 45"
007	Unnamed tributary to Rend Lake	38° 12' 45"	88° 59' 15"
009	Unnamed tributary to Rend Lake	38° 11' 04"	89° 01' 08"
010	Unnamed tributary to Rend Lake	38° 11' 06"	89° 01' 08"

The stream segment (NZU) of Buck Creek receiving the discharge from Outfall 002 is not on the 2012 303(d) list of impaired waters.

Rend Lake (assessment Unit ID IL_RNB) receiving the flow from the unnamed tributaries into which Outfalls 003, 004, 007, 009 and 010 discharge is on the draft 2012 303(d) list of impaired waters. The following parameters have been identified as the pollutants causing impairment:

<u>Outfall</u>	<u>Potential Causes</u>
003, 004, 007, 009, 010	Manganese, Total Suspended Solids (TSS) Phosphorus (Total), Aquatic Algae

The alkaline mine discharge from this facility shall be monitored and limited at all times as follows:

Outfall: 002

Discharge Condition	Parameters													
	Total Suspended Solids (mg/l) (3)		Iron (total) (mg/l) (3), (4)		pH** (S.U.) (3)	Alkalinity/ Acidity (3)	Sulfate (mg/l) (1)	Chloride (mg/l) (6)	Manganese (total) (mg/l) (6)		Hardness (5)	Mercury	Flow (MGD)	Settleable Solids (ml/l) (2)
	30 day average	daily maximum	30 day average	daily maximum					30 day average	daily maximum				
I	35	70	3.5	7.0	6.5-9.0	Alk.>Acid	2000	500	2.0	4.0	Monitor only	Monitor Only	Measure When Sampling	-
II	-	-	-	-	6.0-9.0	-	2440	500	-	-	Monitor only	-	Measure When Sampling	0.5
III	-	-	-	-	6.0-9.0	-	2440	500	-	-	Monitor only	-	Measure When Sampling	-
IV	35	70	3.5	7.0	6.5-9.0	Alk.>Acid	2440	500	2.0	4.0	Monitor only	Monitor only	Measure When Sampling	-

- I Dry weather discharge (base flow or mine pumpage) from the outfall at times of "low flow" or "no flow" conditions in the receiving stream as defined in Special Condition No. 13.
- II In accordance with 35 Ill. Adm. Code 406.110(a), any discharge or increase in the volume of a discharge caused by precipitation within any 24-hour period less than or equal to the 10-year, 24 hour precipitation event (or snowmelt or equivalent volume) shall comply with the indicated limitations instead of those in 35 Ill. Adm. Code 406.106(b). The 10-year, 24-hour precipitation event for this area is considered to be 4.62 inches.
- III In accordance with 35 Ill. Adm. Code 406.110(d), any discharge or increase in volume of a discharge caused by precipitation within any 24-hour period greater than the 10-year, 24-hour precipitation event (or snowmelt of equivalent volume) shall comply with the indicated limitations instead of those in 35 Ill. Adm. Code 406.106(b).
- IV Discharges continuing 24 hours after cessation of precipitation event that resulted in discharge. At such time that receiving stream flow subsides to the degree that the mixing ratio specified in Special Condition No. 13 is not available, monitoring requirements and permit limitations shall revert to Discharge Condition 1.

- (1) Sulfate water quality standards and effluent limitations determined in accordance with 35 Ill. Adm. Code 302.208(h).
- (2) Settleable solids are monitored only as a result of a discharge due to precipitation events which exceed a predetermined 24-hour duration or snowmelt total. Settleable solids effluent limitations for alkaline mine discharges are contained in 35 Ill. Adm. Code 406.110.
- (3) Effluent standards for mine discharges are contained in 35 Ill. Adm. Code 406.106.
- (4) Discharges from Outfall 002, being approved prior to July 27, 1987, are subject to a 30-day average effluent limitation for Iron of 3.5 mg/l. Daily maximum effluent concentrations are calculated as twice the 30-day average.
- (5) Hardness monitoring is required to determine the appropriateness of the sulfate permit limit.
- (6) Technology based effluent limitations are contained in 35 Ill. Adm. Code 406.106.

The alkaline mine discharge from this facility shall be monitored and limited at all times as follows:

Outfall: 003

Discharge Condition	Parameters												
	Total Suspended Solids (3) (mg/l)		Iron (total) (3) (4) (mg/l)		pH (3) (S.U.)	Alkalinity/ Acidity (3)	Sulfate (1) (mg/l)	Chloride (mg/l)	Mn (total) (mg/l)	Hardness (5)	Mercury	Flow (MGD)	Settleable Solids (2) (ml/l)
	30 day average	daily maximum	30 day average	daily maximum									
I	35	70	3.5	7.0	6.5-9.0	Alk.>Acid	2397	500	1.0	Monitor only	Monitor only	Measure When Sampling	-
II	-	-	-	-	6.0-9.0	-	2397	500	-	Monitor only	-	Measure When Sampling	0.5
III	-	-	-	-	6.0-9.0	-	2397	500	-	Monitor only	-	Measure When Sampling	-
IV	35	70	3.5	7.0	6.5-9.0	Alk.>Acid	2397	500	1.0	Monitor only	Monitor only	Measure When Sampling	-

- I Dry weather discharge (base flow or mine pumpage) from the outfall.
- II In accordance with 35 Ill. Adm. Code 406.110(a), any discharge or increase in the volume of a discharge caused by precipitation within any 24-hour period less than or equal to the 10-year, 24 hour precipitation event (or snowmelt or equivalent volume) shall comply with the indicated limitations instead of those in 35 Ill. Adm. Code 406.106(b). The 10-year, 24-hour precipitation event for this area is considered to be 4.62 inches.
- III In accordance with 35 Ill. Adm. Code 406.110(d), any discharge or increase in volume of a discharge caused by precipitation within any 24-hour period greater than the 10-year, 24-hour precipitation event (or snowmelt of equivalent volume) shall comply with the indicated limitations instead of those in 35 Ill. Adm. Code 406.106(b).
- IV Discharges continuing 24 hours after cessation of precipitation event that resulted in discharge. For outfalls which have no allowed mixing, monitoring requirements and permit limitations of Discharge Condition IV are identical to Discharge Condition I to which the outfall discharge has reverted.
- (1) Sulfate water quality standards and effluent limitations determined in accordance with 35 Ill. Adm. Code 302.208(h).
- (2) Settleable solids are monitored only as a result of a discharge due to precipitation events which exceed a predetermined 24-hour duration or snowmelt total. Settleable solids effluent limitations for alkaline mine discharges are contained in 35 Ill. Adm. Code 406.110.
- (3) Effluent standards for mine discharges are contained in 35 Ill. Adm. Code 406.106.
- (4) Discharges from Outfall 003, being approved prior to July 27, 1987, are subject to a 30-day average effluent limitation for Iron of 3.5 mg/l. Daily maximum effluent concentrations are calculated as twice the 30-day average.
- (5) Hardness monitoring is required to determine the appropriateness of the sulfate permit limit.
- (6) The Manganese permit limit of 1.0 mg/l has been retained herein from the previous NPDES Permit to ensure compliance with Section 402(o) of the Clean Water Act, Anti-backsliding.

The alkaline mine discharge from this facility shall be monitored and limited at all times as follows:

Outfall: 009, 010

Discharge Condition	Parameters												
	Total Suspended Solids (3) (mg/l)		Iron (total) (3) (4) (mg/l)		pH (3) (S.U.)	Alkalinity/ Acidity (3)	Sulfate (1) (mg/l)	Chloride (mg/l)	Mn (total) (mg/l)	Hardness (5)	Mercury	Flow (MGD)	Settleable Solids (2) (ml/l)
	30 day average	daily maximum	30 day average	daily maximum									
I	35	70	3.0	6.0	6.5-9.0	Alk.>Acid	2000	500	1.0	Monitor only	Monitor only	Measure When Sampling	-
II	-	-	-	-	6.0-9.0	-	2000	500	-	Monitor only	-	Measure When Sampling	0.5
III	-	-	-	-	6.0-9.0	-	2000	500	-	Monitor only	-	Measure When Sampling	-
IV	35	70	3.0	6.0	6.5-9.0	Alk.>Acid	2000	500	1.0	Monitor only	Monitor only	Measure When Sampling	-

- I Dry weather discharge (base flow or mine pumpage) from the outfall.
- II In accordance with 35 Ill. Adm. Code 406.110(a), any discharge or increase in the volume of a discharge caused by precipitation within any 24-hour period less than or equal to the 10-year, 24 hour precipitation event (or snowmelt or equivalent volume) shall comply with the indicated limitations instead of those in 35 Ill. Adm. Code 406.106(b). The 10-year, 24-hour precipitation event for this area is considered to be 4.62 inches.
- III In accordance with 35 Ill. Adm. Code 406.110(d), any discharge or increase in volume of a discharge caused by precipitation within any 24-hour period greater than the 10-year, 24-hour precipitation event (or snowmelt of equivalent volume) shall comply with the indicated limitations instead of those in 35 Ill. Adm. Code 406.106(b).
- IV Discharges continuing 24 hours after cessation of precipitation event that resulted in discharge. For outfalls which have no allowed mixing, monitoring requirements and permit limitations of Discharge Condition IV are identical to Discharge Condition I to which the outfall discharge has reverted.
- (1) Sulfate water quality standards and effluent limitations determined in accordance with 35 Ill. Adm. Code 302.208(h).
- (2) Settleable solids are monitored only as a result of a discharge due to precipitation events which exceed a predetermined 24-hour duration or snowmelt total. Settleable solids effluent limitations for alkaline mine discharges are contained in 35 Ill. Adm. Code 406.110.
- (3) Effluent standards for mine discharges are contained in 35 Ill. Adm. Code 406.106.
- (4) Discharges from Outfall 009 and 010, being approved after July 27, 1987, are subject to a 30-day average effluent limitation for Iron of 3.0 mg/l. Daily maximum effluent concentrations are calculated as twice the 30-day average.
- (5) Hardness monitoring is required to determine the appropriateness of the sulfate permit limit.
- (6) The Manganese permit limit of 1.0 mg/l has been retained herein from the previous NPDES Permit to ensure compliance with Section 402(o) of the Clean Water Act, Anti-backsliding.

The stormwater discharges from this facility shall be monitored and limited at all times as follows:

Outfall⁽¹⁾: 004, 007

Parameters	
pH (S.U.)	Settleable Solids (ml/l)
6.0-9.0	0.5

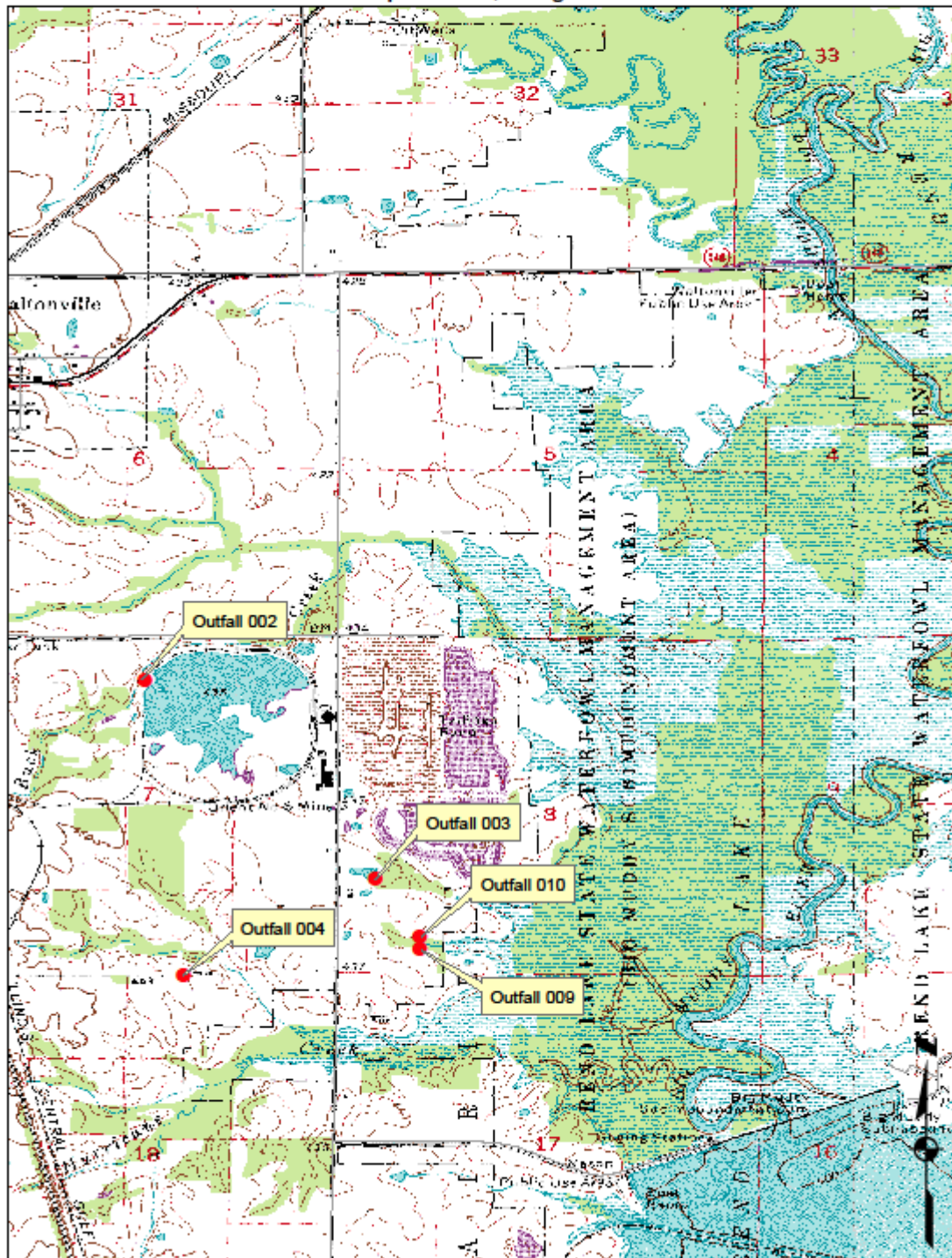
- (1) Stormwater effluent limitations for all Discharge Conditions are established pursuant to 40 CFR 122.26, and IEPA correspondence to the industry dated July 31, 1992, with sample frequency for stormwater discharges being once per year.

To assist you in identifying the location of the discharges, please refer to the attached map. The permit area for this facility is located in Sections 3, 4, 7, 8, 17 and 34, Township 4 South, Range 2 East and Section 34, Township 3 South, Range 2 East, 3rd P.M., Jefferson County, Illinois.

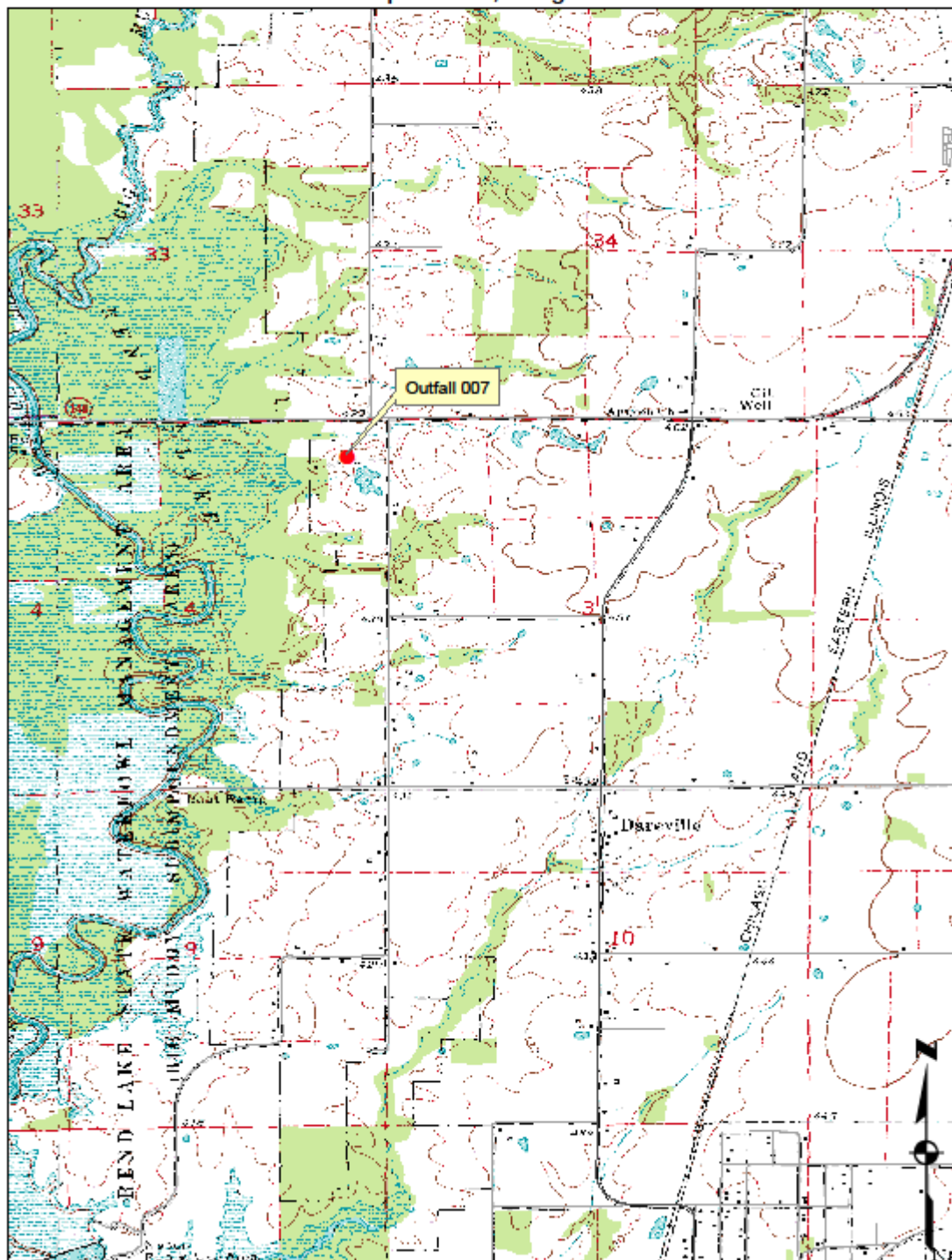
Springfield Coal Company, L.L.C. - Orient No. 6 Mine
NPDES No. IL0004707

Jefferson County

Township 3 South, Range 2 East



Springfield Coal Company, L.L.C. - Orient No. 6 Mine
NPDES No. IL0004707
Jefferson County
Township 3 South, Range 2 East



NPDES Permit No. IL0004707

Illinois Environmental Protection Agency

Division of Water Pollution Control

1021 North Grand Avenue, East

P.O. Box 19276

Springfield, Illinois 62794-9276

NATIONAL POLLUTANT DISCHARGE ELIMINATION SYSTEM

Renewed and Modified NPDES Permit

Expiration Date:

Issue Date:

Effective Date:

Name and Address of Permittee:

Facility Name and Address:

Springfield Coal Company, L.L.C.
P.O. Box 9320
Springfield, Illinois 62791-9320

Springfield Coal Company, L.L.C.
Orient No. 6 Mine
2.5 miles southeast of Waltonville, Illinois
(Jefferson County)

Discharge Number and Classification:

Receiving waters

002 Alkaline Mine Drainage
003, 009, 010 Alkaline Mine Drainage

Buck Creek
Unnamed tributary to Rend Lake

004, 007 Stormwater Discharge

Unnamed tributary to Rend Lake

In compliance with the provisions of the Illinois Environmental Protection Act, Subtitle C and/or Subtitle D Rules and Regulations of the Illinois Pollution Control Board, and the Clean Water Act, the above-named permittee is hereby authorized to discharge at the above location to the above-named receiving stream in accordance with the standard conditions and attachments herein.

Permittee is not authorized to discharge after the above expiration date. In order to receive authorization to discharge beyond the expiration date, the permittee shall submit the proper application as required by the Illinois Environmental Protection Agency (IEPA) not later than 180 days prior to the expiration date.

Larry D. Crislip, Permit Manager
Mine Pollution Control Program
Bureau of Water

LDC:DM:cs/6331c/10-7-13

NPDES Coal Mine Permit
NPDES Permit No. IL0004707
Effluent Limitations and Monitoring

From the effective date of this Permit until the expiration date, the effluent of the following discharge shall be monitored and limited at all times as follows:

Outfall*: 002 (Alkaline Mine Drainage)

Discharge Condition	Parameters													
	Total Suspended Solids (mg/l) ***		Iron (total) (mg/l) ***		pH** (S.U.) ***	Alkalinity/ Acidity ***	Sulfate (mg/l) ***	Chloride (mg/l) ***	Manganese (total) (mg/l.) ***		Hardness ***	Mercury See Special Condition No. (VAR)	Flow (MGD)	Settleable Solids (ml/l)
	30 day average	daily maximum	30 day average	daily maximum					30 day average	daily maximum				
I	35	70	3.5	7.0	6.5-9.0	Alk.>Acid	2000	500	2.0	4.0	Monitor only	Monitor Only	Measure When Sampling	-
II	-	-	-	-	6.0-9.0	-	2440	500	-	-	Monitor only	-	Measure When Sampling	0.5
III	-	-	-	-	6.0-9.0	-	2440	500	-	-	Monitor only	-	Measure When Sampling	-
IV	35	70	3.5	7.0	6.5-9.0	Alk.>Acid	2440	500	2.0	4.0	Monitor only	Monitor only	Measure When Sampling	-

- I Dry weather discharge (base flow or mine pumpage) from the outfall at times of "low flow" or "no flow" conditions in the receiving stream as defined in Special Condition No. 13.
- II In accordance with 35 Ill. Adm. Code 406.110(a), any discharge or increase in the volume of a discharge caused by precipitation within any 24-hour period less than or equal to the 10-year, 24-hour precipitation event (or snowmelt or equivalent volume) shall comply with the indicated limitations instead of those in 35 Ill. Adm. Code 406.106(b). The 10-year, 24-hour precipitation event for this area is considered to be 4.62 inches.
- III In accordance with 35 Ill. Adm. Code 406.110(d), any discharge or increase in the volume of a discharge caused by precipitation within any 24-hour period greater than the 10-year, 24-hour precipitation event (or snowmelt of equivalent volume) shall comply with the indicated limitations instead of those in 35 Ill. Adm. Code 406.106(b).
- IV Discharges continuing 24 hours after cessation of precipitation event that resulted in discharge. For outfalls which have no allowed mixing, monitoring requirements and permit limitations of Discharge Condition IV are identical to Discharge Condition I to which the outfall discharge has reverted.

Sampling during all Discharge Conditions shall be performed utilizing the grab sampling method.

*** There shall be a minimum of nine (9) samples collected during the quarter when the pond is discharging. Of these 9 samples, a minimum of one sample each month shall be taken during either Discharge Condition I or IV should such discharge condition occur. A "no flow" situation is not considered to be a sample of the discharge. In the event that Discharge Conditions II and/or III occur, grab sample of each discharge caused by the above precipitation events (Discharge Conditions II and/or III) shall be taken and analyzed for the parameters identified in the table above during at least 3 separate events each quarter. For quarters in which there are less than 3 such precipitation events resulting in discharges, a grab sample of the discharge shall be required whenever such precipitation event(s) occur(s). Should a sufficient number of discharge events occur during the quarter, the remaining three (3) quarterly samples may be taken during any of the Discharge Conditions described above.

Discharges from the above referenced outfall that are subject to the requirements of Discharge Conditions II, III and/or IV must meet the water quality standards for sulfate and chloride in the receiving stream.

* The Permittee is subject to the limitations, and monitoring and reporting requirements of Special Condition No. 13 for the discharges from Outfall 002 and Buck Creek receiving such discharges.

** No discharge is allowed from any above referenced permitted outfall during "low flow" or "no flow" conditions in the receiving stream unless such discharge meets the water quality standards of 35 Ill. Adm. Code 302.204 for pH.

NPDES Coal Mine Permit

NPDES Permit No. IL0004707

Effluent Limitations and Monitoring

From the effective date of this Permit until the expiration date, the effluent of the following discharge shall be monitored and limited at all times as follows:

Outfall*: 003 (Alkaline Mine Drainage)

Discharge Condition	Parameters												
	Total Suspended Solids (mg/l) ***		Iron (total) (mg/l) ***		pH** (S.U.) ***	Alkalinity/ Acidity ***	Sulfate (mg/l) ***	Chloride (mg/l) ***	Mn (total) (mg/l) ***	Hardness ***	Mercury see Special Condition No. (VAR)	Flow (MGD)	Settleable Solids (ml/l)
	30 day average	daily maximum	30 day average	daily maximum									
I	35	70	3.5	7.0	6.5-9.0	Alk.>Acid	2397	500	1.0	Monitor only	Monitor only	Measure When Sampling	-
II	-	-	-	-	6.0-9.0	-	2397	500	-	Monitor only	-	Measure When Sampling	0.5
III	-	-	-	-	6.0-9.0	-	2397	500	-	Monitor only	-	Measure When Sampling	-
IV	35	70	3.5	7.0	6.5-9.0	Alk.>Acid	2397	500	1.0	Monitor only	Monitor only	Measure When Sampling	-

- I Dry weather discharge (base flow or mine pumpage) from the outfall.
- II In accordance with 35 Ill. Adm. Code 406.110(a), any discharge or increase in the volume of a discharge caused by precipitation within any 24-hour period less than or equal to the 10-year, 24-hour precipitation event (or snowmelt or equivalent volume) shall comply with the indicated limitations instead of those in 35 Ill. Adm. Code 406.106(b). The 10-year, 24-hour precipitation event for this area is considered to be 4.62 inches.
- III In accordance with 35 Ill. Adm. Code 406.110(d), any discharge or increase in the volume of a discharge caused by precipitation within any 24-hour period greater than the 10-year, 24-hour precipitation event (or snowmelt of equivalent volume) shall comply with the indicated limitations instead of those in 35 Ill. Adm. Code 406.106(b).
- IV Discharges continuing 24 hours after cessation of precipitation event that resulted in discharge. For outfalls which have no allowed mixing, monitoring requirements and permit limitations of Discharge Condition IV are identical to Discharge Condition I to which the outfall discharge has reverted.

Sampling during all Discharge Conditions shall be performed utilizing the grab sampling method.

*** There shall be a minimum of nine (9) samples collected during the quarter when the pond is discharging. Of these 9 samples, a minimum of one sample each month shall be taken during either Discharge Condition I or IV should such discharge condition occur. A "no flow" situation is not considered to be a sample of the discharge. In the event that Discharge Conditions II and/or III occur, grab sample of each discharge caused by the above precipitation events (Discharge Conditions II and/or III) shall be taken and analyzed for the parameters identified in the table above during at least 3 separate events each quarter. For quarters in which there are less than 3 such precipitation events resulting in discharges, a grab sample of the discharge shall be required whenever such precipitation event(s) occur(s). Should a sufficient number of discharge events occur during the quarter, the remaining three (3) quarterly samples may be taken during any of the Discharge Conditions described above.

The water quality standards for sulfate and chloride must be met in discharges from the above referenced outfall as well as in the receiving stream.

* The Permittee is subject to the limitations, and monitoring and reporting requirements of Special Condition No. 15 for the discharges from Outfall 003 and the unnamed tributary to Rend Lake receiving such discharges.

** No discharge is allowed from any above referenced permitted outfall during "low flow" or "no flow" conditions in the receiving stream unless such discharge meets the water quality standards of 35 Ill. Adm. Code 302.204 for pH.

NPDES Coal Mine Permit

NPDES Permit No. IL0004707

Effluent Limitations and Monitoring

From the effective date of this Permit until the expiration date, the effluent of the following discharge shall be monitored and limited at all times as follows:

Outfall*: 009, 010 (Alkaline Mine Drainage)

Discharge Condition	Parameters												
	Total Suspended Solids (mg/l) ***		Iron (total) (mg/l) ***		pH** (S.U.) ***	Alkalinity/ Acidity ***	Sulfate (mg/l) ***	Chloride (mg/l) ***	Mn (total) (mg/l) ***	Hardness ***	Mercury see Special Condition No. (VAR)	Flow (MGD)	Settleable Solids (ml/l)
	30 day average	daily maximum	30 day average	daily maximum									
I	35	70	3.0	6.0	6.5-9.0	Alk.>Acid	2000	500	1.0	Monitor only	Monitor only	Measure When Sampling	-
II	-	-	-	-	6.0-9.0	-	2000	500	-	Monitor only	-	Measure When Sampling	0.5
III	-	-	-	-	6.0-9.0	-	2000	500	-	Monitor only	-	Measure When Sampling	-
IV	35	70	3.0	6.0	6.5-9.0	Alk.>Acid	2000	500	1.0	Monitor only	Monitor only	Measure When Sampling	-

- I Dry weather discharge (base flow or mine pumpage) from the outfall.
- II In accordance with 35 Ill. Adm. Code 406.110(a), any discharge or increase in the volume of a discharge caused by precipitation within any 24-hour period less than or equal to the 10-year, 24-hour precipitation event (or snowmelt or equivalent volume) shall comply with the indicated limitations instead of those in 35 Ill. Adm. Code 406.106(b). The 10-year, 24-hour precipitation event for this area is considered to be 4.62 inches.
- III In accordance with 35 Ill. Adm. Code 406.110(d), any discharge or increase in the volume of a discharge caused by precipitation within any 24-hour period greater than the 10-year, 24-hour precipitation event (or snowmelt or equivalent volume) shall comply with the indicated limitations instead of those in 35 Ill. Adm. Code 406.106(b).
- IV Discharges continuing 24 hours after cessation of precipitation event that resulted in discharge. For outfalls which have no allowed mixing, monitoring requirements and permit limitations of Discharge Condition IV are identical to Discharge Condition I to which the outfall discharge has reverted.

Sampling during all Discharge Conditions shall be performed utilizing the grab sampling method.

*** There shall be a minimum of nine (9) samples collected during the quarter when the pond is discharging. Of these 9 samples, a minimum of one sample each month shall be taken during either Discharge Condition I or IV should such discharge condition occur. A "no flow" situation is not considered to be a sample of the discharge. In the event that Discharge Conditions II and/or III occur, grab sample of each discharge caused by the above precipitation events (Discharge Conditions II and/or III) shall be taken and analyzed for the parameters identified in the table above during at least 3 separate events each quarter. For quarters in which there are less than 3 such precipitation events resulting in discharges, a grab sample of the discharge shall be required whenever such precipitation event(s) occur(s). Should a sufficient number of discharge events occur during the quarter, the remaining three (3) quarterly samples may be taken during any of the Discharge Conditions described above.

The water quality standards for sulfate and chloride must be met in discharges from the above referenced outfall as well as in the receiving stream.

* The Permittee is subject to the limitations, and monitoring and reporting requirements of Special Condition No. 15 for the discharges from Outfall 009 and 010 and the unnamed tributary to Rend Lake receiving such discharges.

** No discharge is allowed from any above referenced permitted outfall during "low flow" or "no flow" conditions in the receiving stream unless such discharge meets the water quality standards of 35 Ill. Adm. Code 302.204 for pH.

NPDES Coal Mine Permit
NPDES Permit No. IL0004707
Effluent Limitations and Monitoring

Upon completion of Special Condition 10 and approval from the Agency, the effluent of the following discharge shall be monitored and limited at all times as follows:

Outfall*: 002 (Reclamation Area Drainage)

Discharge Condition	Parameters					
	pH** (S.U.) ***	Sulfate (mg/l) ***	Chloride (mg/l) ***	Hardness ***	Flow (MGD)	Settleable Solids (ml/l) ***
I	6.5-9.0	2000	500	Monitor only	Measure When Sampling	0.5
II	6.0-9.0	2000	500	Monitor only	Measure When Sampling	0.5
III	6.0-9.0	2000	500	Monitor only	Measure When Sampling	-
IV	6.5-9.0	2000	500	Monitor only	Measure When Sampling	0.5

- I Dry weather discharge (base flow, if present) from the outfall.
- II In accordance with 35 Ill. Adm. Code 406.109(b), any discharge or increase in the volume of a discharge caused by precipitation within any 24-hour period less than or equal to the 10-year, 24-hour precipitation event (or snowmelt or equivalent volume) shall comply with the indicated limitations. The 10-year, 24-hour precipitation event for this area is considered to be 4.62 inches.
- III In accordance with 35 Ill. Adm. Code 406.109(c), any discharge or increase in the volume of a discharge caused by precipitation within any 24-hour period greater than the 10-year, 24-hour precipitation event (or snowmelt or equivalent volume) shall comply with the indicated limitations instead of those in 35 Ill. Adm. Code 406.109(b).
- IV Discharges continuing 24 hours after cessation of precipitation event that resulted in discharge. For reclamation area discharges, monitoring requirements and permit limitations of Discharge Condition IV are identical to Discharge Condition I to which the outfall discharge has reverted.

Sampling during all Discharge Conditions shall be performed utilizing the grab sampling method. A "no flow" situation is not considered to be a sample of the discharge.

*** One sample per month (1/month) shall be collected if and/or when a discharge occurs under either Discharge Condition I, II or IV and analyzed for the parameters identified in the table above. In addition, at least three (3) grab samples shall be taken each quarter from separate precipitation events under Discharge Condition III and analyzed for parameters indicated in the above table. For quarters in which there are less than 3 such precipitation events, a grab sample of the discharge shall be required whenever such precipitation event(s) occur(s).

The water quality standards for sulfate and chloride must be met in discharges from the above referenced outfall as well as in the receiving stream.

* The Permittee is subject to the limitations, and monitoring and reporting requirements of Special Condition No. 14 for the discharges from Outfall 002 and Buck Creek receiving such discharges.

** No discharge is allowed from any above referenced permitted outfall during "low flow" or "no flow" conditions in the receiving stream unless such discharge meets the water quality standards of 35 Ill. Adm. Code 302.204 for pH.

NPDES Coal Mine Permit
NPDES Permit No. IL0004707
Effluent Limitations and Monitoring

Upon completion of Special Condition 10 and approval from the Agency, the effluent of the following discharge shall be monitored and limited at all times as follows:

Outfall*: 003 (Reclamation Area Drainage)

Discharge Condition	Parameters					
	pH** (S.U.) ***	Sulfate (mg/l) ***	Chloride (mg/l) ***	Hardness ***	Flow (MGD)	Settleable Solids (ml/l) ***
I	6.5-9.0	2397	500	Monitor only	Measure When Sampling	0.5
II	6.0-9.0	2397	500	Monitor only	Measure When Sampling	0.5
III	6.0-9.0	2397	500	Monitor only	Measure When Sampling	-
IV	6.5-9.0	2397	500	Monitor only	Measure When Sampling	0.5

- I Dry weather discharge (base flow, if present) from the outfall.
- II In accordance with 35 Ill. Adm. Code 406.109(b), any discharge or increase in the volume of a discharge caused by precipitation within any 24-hour period less than or equal to the 10-year, 24-hour precipitation event (or snowmelt or equivalent volume) shall comply with the indicated limitations. The 10-year, 24-hour precipitation event for this area is considered to be 4.62 inches.
- III In accordance with 35 Ill. Adm. Code 406.109(c), any discharge or increase in the volume of a discharge caused by precipitation within any 24-hour period greater than the 10-year, 24-hour precipitation event (or snowmelt or equivalent volume) shall comply with the indicated limitations instead of those in 35 Ill. Adm. Code 406.109(b).
- IV Discharges continuing 24 hours after cessation of precipitation event that resulted in discharge. For reclamation area discharges, monitoring requirements and permit limitations of Discharge Condition IV are identical to Discharge Condition I to which the outfall discharge has reverted.

Sampling during all Discharge Conditions shall be performed utilizing the grab sampling method. A "no flow" situation is not considered to be a sample of the discharge.

*** One sample per month (1/month) shall be collected if and/or when a discharge occurs under either Discharge Condition I, II or IV and analyzed for the parameters identified in the table above. In addition, at least three (3) grab samples shall be taken each quarter from separate precipitation events under Discharge Condition III and analyzed for parameters indicated in the above table. For quarters in which there are less than 3 such precipitation events, a grab sample of the discharge shall be required whenever such precipitation event(s) occur(s).

The water quality standards for sulfate and chloride must be met in discharges from the above referenced outfall as well as in the receiving stream.

* The Permittee is subject to the limitations, and monitoring and reporting requirements of Special Condition No. 15 for the discharges from Outfall 003 and the unnamed tributary to Rend Lake receiving such discharges.

** No discharge is allowed from any above referenced permitted outfall during "low flow" or "no flow" conditions in the receiving stream unless such discharge meets the water quality standards of 35 Ill. Adm. Code 302.204 for pH.

NPDES Coal Mine Permit
NPDES Permit No. IL0004707
Effluent Limitations and Monitoring

Upon completion of Special Condition 10 and approval from the Agency, the effluent of the following discharge shall be monitored and limited at all times as follows:

Outfall*: 009, 010 (Reclamation Area Drainage)

Discharge Condition	Parameters					
	pH** (S.U.) ***	Sulfate (mg/l) ***	Chloride (mg/l) ***	Hardness ***	Flow (MGD)	Settleable Solids (ml/l) ***
I	6.5-9.0	2000	500	Monitor only	Measure When Sampling	0.5
II	6.0-9.0	2000	500	Monitor only	Measure When Sampling	0.5
III	6.0-9.0	2000	500	Monitor only	Measure When Sampling	-
IV	6.5-9.0	2000	500	Monitor only	Measure When Sampling	0.5

- I Dry weather discharge (base flow, if present) from the outfall.
- II In accordance with 35 Ill. Adm. Code 406.109(b), any discharge or increase in the volume of a discharge caused by precipitation within any 24-hour period less than or equal to the 10-year, 24-hour precipitation event (or snowmelt or equivalent volume) shall comply with the indicated limitations. The 10-year, 24-hour precipitation event for this area is considered to be 4.62 inches.
- III In accordance with 35 Ill. Adm. Code 406.109(c), any discharge or increase in the volume of a discharge caused by precipitation within any 24-hour period greater than the 10-year, 24-hour precipitation event (or snowmelt or equivalent volume) shall comply with the indicated limitations instead of those in 35 Ill. Adm. Code 406.109(b).
- IV Discharges continuing 24 hours after cessation of precipitation event that resulted in discharge. For reclamation area discharges, monitoring requirements and permit limitations of Discharge Condition IV are identical to Discharge Condition I to which the outfall discharge has reverted.

Sampling during all Discharge Conditions shall be performed utilizing the grab sampling method. A "no flow" situation is not considered to be a sample of the discharge.

*** One sample per month (1/month) shall be collected if and/or when a discharge occurs under either Discharge Condition I, II or IV and analyzed for the parameters identified in the table above. In addition, at least three (3) grab samples shall be taken each quarter from separate precipitation events under Discharge Condition III and analyzed for parameters indicated in the above table. For quarters in which there are less than 3 such precipitation events, a grab sample of the discharge shall be required whenever such precipitation event(s) occur(s).

The water quality standards for sulfate and chloride must be met in discharges from the above referenced outfall as well as in the receiving stream.

* The Permittee is subject to the limitations, and monitoring and reporting requirements of Special Condition No. 15 for the discharges from Outfall 009 and 010 and the unnamed tributaries to Rend Lake receiving such discharges.

** No discharge is allowed from any above referenced permitted outfall during "low flow" or "no flow" conditions in the receiving stream unless such discharge meets the water quality standards of 35 Ill. Adm. Code 302.204 for pH.

NPDES Coal Mine Permit
NPDES Permit No. IL0004707
Effluent Limitations and Monitoring

From the effective date of this Permit until the expiration date, the effluent of the following discharge shall be monitored and limited at all times as follows:

Outfalls: 004, 007 (Stormwater Discharge)

Parameters	
pH* (S.U.) **	Settleable Solids (ml/l) **
6.0-9.0	0.5

Stormwater discharge monitoring is subject to the following reporting requirements:

Analysis of samples must be submitted with second quarter Discharge Monitoring Reports.

If discharges can be shown to be similar, a plan may be submitted by November 1 of each year preceding sampling to propose grouping of similar discharges and/or updated previously submitted groupings. If updating of a previously submitted plan is not necessary, a written notification to the Agency, indicating such is required. Upon approval from the Agency, one representative sample for each group may be submitted.

Annual stormwater monitoring is required for all discharges until Final SMCRA Bond is released and approval to cease such monitoring is obtained from the Agency.

* No discharge is allowed from any above referenced permitted outfalls during "low flow" or "no flow" conditions in the receiving stream unless such discharge meets the water quality standards of 35 Ill. Adm. Code 302.204 for pH.

** One (1) sample per year shall be collected and analyzed for the indicated parameter; however, such sampling and analysis is required only if and/or when a discharge occurs from the individual Outfall(s) identified above.

NPDES Coal Mine Permit
NPDES Permit No. IL0004707
Effluent Limitations and Monitoring

Upon completion of Special Condition No. 11 and approval from the Agency, the effluent of the following discharge shall be monitored and limited at all times as follows:

Outfalls: 002, 003, 009, 010 (Stormwater Discharge)

Parameters	
pH* (S.U.) **	Settleable Solids (ml/l) **
6.0-9.0	0.5

Stormwater discharge monitoring is subject to the following reporting requirements:

Analysis of samples must be submitted with second quarter Discharge Monitoring Reports.

If discharges can be shown to be similar, a plan may be submitted by November 1 of each year preceding sampling to propose grouping of similar discharges and/or updated previously submitted groupings. If updating of a previously submitted plan is not necessary, a written notification to the Agency, indicating such is required. Upon approval from the Agency, one representative sample for each group may be submitted.

Annual stormwater monitoring is required for all discharges until Final SMCRA Bond is released and approval to cease such monitoring is obtained from the Agency.

* No discharge is allowed from any above referenced permitted outfalls during "low flow" or "no flow" conditions in the receiving stream unless such discharge meets the water quality standards of 35 Ill. Adm. Code 302.204 for pH.

** One (1) sample per year shall be collected and analyzed for the indicated parameter; however, such sampling and analysis is required only if and/or when a discharge occurs from the individual Outfall(s) identified above.

NPDES Permit No. IL0004707

Construction Authorization No. 6389-12

C.A. Date: May 8, 2013

Authorization is hereby granted to the above designee to construct and operate the mine and mine refuse area described as follows:

Surface facilities of this previous underground coal mine consists of 605.58 acres located in Section 3, 4, 7, 8, 17 and 34, Township 3 South, Range 2 East, Jefferson County, Illinois. This total area is comprised of the following parcels:

<u>IDNR/OMM Permit</u>	<u>Area</u>
No. 42	393 acres
No. 148	154 acres
No. 236	0.18 acres
No. 288	5.4 acres
No. 336	53.0 acres

Reclamation activities at the Portal No. 1 site (OMM Permit Nos. 42 and 148) have been completed with the exception of refuse disposal areas. The Permit No. 336 area including Outfalls 009 and 010 will be used for borrow material to assist with reclamation of the refuse areas.

Structures and sedimentation control, including the sanitary wastewater treatment system (currently out of service), remain at the Portal No. 2 site (OMM Permit No. 42) as this area has potential for development as an industrial/commercial area.

Surface drainage for the above referenced areas is controlled by four (4) existing and two (2) proposed sedimentation ponds. The existing basins have discharges assigned Outfalls 002, 003, 004 and 007 while discharges from the proposed basins are assigned Outfalls 009 and 010. Outfalls 002 and 003 are classified as alkaline mine drainage. Outfalls 004 and 007 are classified as stormwater discharges. Outfall 002 will report to Buck Creek while Outfalls 003, 004 and 007 will report to an unnamed tributary to Rend Lake. Proposed Outfalls 009 and 010 are located in the OMM Permit No. 336 area to control runoff from disturbed areas to be used to obtain borrow material for reclamation purposes. Outfall 009 and 010 are classified as alkaline mine drainage and will both report to unnamed tributary to Rend Lake.

The sanitary wastewater treatment plant discussed above consists of a two (2) cell lagoon followed by sand filters and chlorination. The system was originally designed for a PE of 7 and DAF = 9,000 gpd. It is noted that the sanitary treatment system has been taken out of service pending development of the Portal No. 2 as an industrial/commercial area. Any future owner/operator of this sanitary treatment system must obtain a modified or new NPDES Permit for future operation.

Location and receiving streams of the Outfalls at this facility are as follows:

Outfall Number	Latitude			Longitude			Receiving Water
	DEG	MIN	SEC	DEG	MIN	SEC	
002	38°	11'	46"	89°	01'	51"	Buck Creek
003	38°	11'	15"	89°	01'	15"	Unnamed tributary to Rend Lake
004	38°	11'	00"	89°	01'	45"	Unnamed tributary to Rend Lake
007	38°	12'	45"	89°	59'	15"	Unnamed tributary to Rend Lake
009	38°	11'	04"	89°	01'	08"	Unnamed tributary to Rend Lake
010	38°	11'	06"	89°	01'	08"	Unnamed tributary to Rend Lake

As proposed and depicted in IEPA Log No. 6293-12 the operations plan is revised to support reclamation of the site by the installation of office trailer, vehicle and equipment parking areas, and portable fuel storage tanks.

The cover plan for reclamation of the refuse disposal area on the east side of the mine is revised as proposed and depicted in IEPA Log No. 6396-12. This revision consists of the application and incorporation of agricultural limestone into the refuse material and covering with two (2) feet of soil material on areas with slopes less than 10% and three (3) feet of soil material on areas with slopes greater than 10%.

Groundwater monitoring is required in accordance with Condition No. 12.

This Construction Authorization supersedes and replaces Construction Authorization No. 8024-00 previously issued for the herein permitted facilities and activities.

NPDES Permit No. IL0004707

Construction Authorization No. 6389-12

C.A. Date: May 8, 2013

The abandonment plan shall be executed and completed in accordance with 35 Ill. Adm. Code 405.109.

All water remaining upon abandonment must meet the requirements of 35 Ill. Adm. Code 406.202. For the constituents not covered by Parts 302 or 303, all water remaining upon abandonment must meet the requirements of 35 Ill. Adm. Code 406.106.

This Authorization is issued subject to the following Conditions. If such Conditions require additional or revised facilities, satisfactory engineering plan documents must be submitted to this Agency for review and approval to secure issuance of a Supplemental Authorization to Construct.

1. If any statement or representation is found to be incorrect, this permit may be revoked and the permittee thereupon waives all rights thereunder.
2. The issuance of this permit (a) shall not be considered as in any manner affecting the title of the premises upon which the mine or mine refuse area is to be located; (b) does not release the permittee from any liability for damage to person or property caused by or resulting from the installation, maintenance or operation of the proposed facilities; (c) does not take into consideration the structural stability of any units or parts of the project; and (d) does not release the permittee from compliance with other applicable statutes of the State of Illinois, or with applicable local laws, regulations or ordinances.
3. Final plans, specifications, application and supporting documents as submitted by the person indicated on Page 1 as approved shall constitute part of this permit in the records of the Illinois Environmental Protection Agency.
4. There shall be no deviations from the approved plans and specifications unless revised plans, specifications and application shall first have been submitted to the Illinois Environmental Protection Agency and a supplemental permit issued.
5. The permit holder shall notify the Environmental Protection Agency (217/782-3637) immediately of an emergency at the mine or mine refuse area which causes or threatens to cause a sudden discharge of contaminants into the waters of Illinois and shall immediately undertake necessary corrective measures as required by 35 Ill. Adm. Code 405.111. (217/782-3637 for calls between the hours of 5:00 p.m. to 8:30 a.m. and on weekends.)
6. The termination of an NPDES discharge monitoring point or cessation of monitoring of an NPDES discharge is not authorized by this Agency until the permittee submits adequate justification to show what alternate treatment is provided or that untreated drainage will meet applicable effluent and water quality standards.
7. Initial construction activities in areas to be disturbed shall be for collection and treatment facilities only. Prior to the start of other activities, surface drainage controls shall be constructed and operated to avoid violations of the Act or Subtitle D. At such time as runoff water is collected in the sedimentation pond, a sample shall be collected and analyzed, for the parameters designated as 1M through 15M under Part 5-C of Form 2C and the effluent parameters designated herein with the results sent to this Agency. Should additional treatment be necessary to meet the standards of 35 Ill. Adm. Code 406.106, a Supplemental Permit must be obtained. Discharge from ponds is not allowed unless applicable effluent and water quality standards are met in the basin discharge(s).
8. This Agency must be informed in writing and an application submitted if drainage, which was previously classified as alkaline (pH greater than 6.0), becomes acid (pH less than 6.0) or ferruginous (base flow with an iron concentration greater than 10 mg/l). The type of drainage reporting to the basin should be reclassified in a manner consistent with the applicable rule of 35 Ill. Adm. Code 406 as amended in R84-29 at 11 Ill. Reg. 12899. The application should discuss the treatment method and demonstrate how the discharge will meet the applicable standards.
9. A permittee has the obligation to add a settling aid if necessary to meet the suspended solids or settleable solids effluent standards. The selection of a settling aid and the application practice shall be in accordance with a. or b. below
 - a. Alum ($\text{Al}_2(\text{SO}_4)_3$), hydrated lime ($\text{Ca}(\text{OH})_2$), soda ash (Na_2CO_3), alkaline pit pumpage, acetylene production by-product (tested for impurities), and ground limestone are acceptable settling aids and are hereby permitted for alkaline mine drainage sedimentation ponds.
 - b. Any other settling aids such as commercial flocculents and coagulants are permitted only on prior approval from the Agency. To obtain approval a permittee must demonstrate in writing to the Agency that such use will not cause a violation of the toxic substances standard of 35 Ill. Adm. Code 302.210 or of the appropriate effluent and water quality standards of 35 Ill. Adm. Code parts 302, 304, and 406.

NPDES Permit No. IL0004707

Construction Authorization No. 6389-12

C.A. Date: May 8, 2013

10. A general plan for the nature and disposition of all liquids used to drill boreholes shall be filed with this Agency prior to any such operation. This plan should be filed at such time that the operator becomes aware of the need to drill unless the plan of operation was contained in a previously approved application.
11. Any of the following shall be a violation of the provisions required under 35 Ill. Adm. Code 406.202:
 - a. It is demonstrated that an adverse effect on the environment in and around the receiving stream has occurred or is likely to occur.
 - b. It is demonstrated that the discharge has adversely affected or is likely to adversely affect any public water supply.
 - c. The Agency determines that the permittee is not utilizing Good Mining Practices in accordance with 35 Ill. Adm. Code 406.204 which are fully described in detail in Sections 406.205, 406.206, 406.207 and 406.208 in order to minimize the discharge of total dissolved solids, chloride, sulfate, iron and manganese. To the extent practical, such Good Mining Practices shall be implemented to:
 - i. Stop or minimize water from coming into contact with disturbed areas through the use of diversions and/or runoff controls (Section 406.205).
 - ii. Retention and control within the site of waters exposed to disturbed materials utilizing erosion controls, sedimentation controls, water reuse or recirculation, minimization of exposure to disturbed materials, etc. (Section 406.206).
 - iii. Control and treatment of waters discharged from the site by regulation of flow of discharges and/or routing of discharges to more suitable discharge locations (Section 406.207).
 - iv. Utilized unconventional practices to prevent the production or discharge of waters containing elevated contaminant concentrations such as diversion of groundwater prior to entry into a surface or underground mine, dewatering practices to remove clean water prior to contacting disturbed materials and/or any additional practices demonstrated to be effective in reducing contaminant levels in discharges (Section 406.208).
12. Groundwater monitoring requirements for Well Nos. MW-61A, MW-61B, MW-62 and MW-63 are as follows:
 - a. Routine quarterly monitoring for the referenced wells shall continue on a quarterly basis as required by IDNR/OMM for the following list of constituents:

Iron (dissolved)	Hardness
Iron (total)	Acidity
Manganese (dissolved)	Alkalinity
Manganese (total)	pH
Sulfate	Water Elevation
Total Dissolved Solids	
 - b. Following completion of active mining and reclamation, post-mining monitoring of the above referenced wells shall consist of six (6) samples collected during a 12-month period (approximately bi-monthly) to determine post-mining concentrations. Post-mining monitoring shall include the following list of constituents:

Aluminum	Fluoride	Sulfate
Antimony	Iron (dissolved)	Thallium
Arsenic	Iron (total)	Total Dissolved Solids
Barium	Lead	Vanadium
Beryllium	Manganese (dissolved)	Zinc
Boron	Manganese (total)	pH
Cadmium	Mercury	Acidity
Chloride	Molybdenum	Alkalinity
Chromium	Nickel	Hardness
Cobalt	Phenols	Water Elevation
Copper	Selenium	
Cyanide	Silver	

NPDES Permit No. IL0004707

Special Conditions

Special Condition No. 1: No effluent from any mine related facility area under this permit shall, alone or in combination with other sources, cause a violation of any applicable water quality standard as set out in the Illinois Pollution Control Board Rules and Regulations, Subtitle C: Water Pollution.

Special Condition No. 2: Samples taken in compliance with the effluent monitoring requirements shall be taken at a point representative of the discharge, but prior to entry into the receiving stream.

Special Condition No. 3: All periodic monitoring and reporting forms, including Discharge Monitoring Report (DMR) forms, shall be submitted to the Agency according to the schedule outlined in Special Condition No. 4 or 5 below with one (1) copy forwarded to each of the following addresses:

Illinois Environmental Protection Agency
Division of Water Pollution Control
1021 North Grand Ave., East
P.O. Box 19276
Springfield, IL 62794-9276

Illinois Environmental Protection Agency
Mine Pollution Control Program
2309 West Main Street, Suite 116
Marion, Illinois 62959

Attn: Compliance Assurance Section

Should electronic filing be available and elected for any periodic monitoring and reporting requirements, the Agency shall be notified via correspondence or e-mail at such time that the electronic filing has been completed.

Special Condition No. 4: Completed Discharge Monitoring Report (DMR) forms and stream monitoring results, shall be retained by the Permittee for a period of three (3) months and shall be mailed and received by the IEPA at the addresses indicated in Special Condition No. 3 above in accordance with the following schedule, unless otherwise specified by the permitting authority.

Period	Received by IEPA
January, February, March	April 28
April, May, June	July 28
July, August, September	October 28
October, November, December	January 28

The Permittee shall record discharge monitoring results on Discharge Monitoring Report forms (DMR's) using one such form for each applicable Discharge Condition each month.

Special Condition No. 5: Completed periodic monitoring and reporting, other than DMR's and stream monitoring (i.e., groundwater monitoring, coal combustion waste analysis reports, etc.), shall be retained by the Permittee for a period of three (3) months and shall be mailed and received by the IEPA at the addresses indicated in Special Condition No. 3 above in accordance with the following schedule, unless otherwise specified by the permitting authority.

Period	Received by IEPA
January, February, March	May 1
April, May, June	August 1
July, August, September	November 1
October, November, December	February 1

Special Condition No. 6: The Agency may revise or modify the permit consistent with applicable laws, regulations or judicial orders.

Special Condition No. 7: If an applicable effluent standard or limitation is promulgated under Sections 301(b)(2)(C) and (D), 304(b)(2), and 307(a)(2) of the Clean Water Act and that effluent standard or limitation is more stringent than any effluent limitation in the permit or controls a pollutant not limited in the NPDES Permit, the Agency shall revise or modify the permit in accordance with the more stringent standard or prohibition and shall so notify the permittee.

Special Condition No. 8: The permittee shall notify the Agency in writing by certified mail within thirty days of abandonment, cessation, or suspension of active mining for thirty days or more unless caused by a labor dispute. During cessation or suspension of active mining, whether caused by a labor dispute or not, the permittee shall provide whatever interim impoundment, drainage diversion, and wastewater treatment is necessary to avoid violations of the Act or Subtitle D.

NPDES Permit No. IL0004707

Special Conditions

Special Condition No. 9: Plans must be submitted to and approved by this Agency prior to construction of a sedimentation pond. At such time as runoff water is collected in the sedimentation pond, a sample shall be collected and analyzed for the parameters designated as 1M-15M under Part 5-C of Form 2C and the effluent parameters designated herein with the results sent to this Agency. Should additional treatment be necessary to meet these standards, a Supplemental Permit must also be obtained. Discharge from a pond is not allowed unless applicable effluent and water quality standards are met.

Special Condition No. 10: The special reclamation area effluent standards of 35 Ill. Adm. Code 406.109 apply only on approval from the Agency. To obtain approval, a request form and supporting documentation shall be submitted 45 days prior to the month that the permittee wishes the discharge be classified as a reclamation area discharge. The Agency will notify the permittee upon approval of the change.

Special Condition No. 11: The special stormwater effluent standards apply only on approval from the Agency. To obtain approval, a request with supporting documentation shall be submitted 45 days prior to the month that the permittee proposes the discharge to be classified as a stormwater discharge. The documentation supporting the request shall include analysis results indicating the discharge will consistently comply with reclamation area discharge effluent standards. The Agency will notify the permittee upon approval of the change.

Special Condition No. 12: Annual stormwater monitoring is required for all discharges not reporting to a sediment basin until Final SMCRA Bond is released and approval to cease such monitoring is obtained from the Agency.

- A. Each discharge must be monitored for pH and settleable solids annually.
- B. Analysis of samples must be submitted with second quarter Discharge Monitoring Reports. A map with discharge locations must be included in this submittal.
- C. If discharges can be shown to be similar, a plan may be submitted by November 1 of each year preceding sampling to propose grouping of similar discharges and/or update previously submitted groupings. If updating of a previously submitted plan is not necessary, a written notification to the Agency indicating such is required. Upon approval from the Agency, one representative sample for each group may be submitted.

Special Condition No. 13: Sediment Pond Operation and Maintenance (Outfall 002):

- a. No discharge is allowed from Outfall No. 002 during "low flow" or "no flow" conditions in the receiving stream, unless such discharge meets the water quality standards of 35 Ill. Adm. Code 302. For purposes of this Special Condition "low flow" shall be defined as any condition wherein the upstream flow available for mixing is less than the ratio times the flow rate being discharged from the respective outfall. These ratios are as follows:

Outfall No.	Flow Ratio of Receiving Stream to Outfall Discharge
002	0.22:1.0

Pursuant to 35 Ill. Adm. Code 302.120, discharges from the referenced outfalls that otherwise would not meet the water quality standards of 35 Ill. Adm. Code 302 may be permitted if sufficient flow exists in the receiving stream to ensure that applicable water quality standards are met. That is, discharges not meeting the water quality standards of 35 Ill. Adm. Code 302 may only be discharged in combination with stormwater discharges from the basin, and only at such times that sufficient flow exists in the receiving stream to ensure that water quality standards in the receiving stream beyond the area of allowed mixing will not be exceeded. Following any such stormwater discharge, but prior to the flow in the receiving stream subsiding, the impounded water in the basin may be pumped or otherwise evacuated sufficiently below the discharge elevation to provide capacity for holding a sufficient volume of mine pumpage and/or surface runoff to preclude the possibility of discharge until such time that a subsequent precipitation event results in discharge from the basin. Should the Permittee elect to pump impounded water from the basin in accordance with this Special Condition, the pump intake shall be "floated" near the impounded water surface or otherwise managed to prevent re-suspension and subsequent discharge of previously accumulated sediments. At times of stormwater discharge, in addition to the alternate effluent (Discharge Condition Nos. II and III) monitoring requirements, as indicated on the applicable effluent pages of this Permit, discharges from Outfall No. 002 shall be monitored and reported for Discharge Rate, Sulfate, Chloride and Hardness.

- b. The following sampling and monitoring requirements are applicable to flow in Buck Creek which receives the discharges from Outfall 002.

NPDES Permit No. IL0004707

Special Conditions

- i. All sampling and monitoring required under Special Condition No. 13(b)(ii) and (iii) below shall be performed during a discharge and monitoring event from the associated outfall.
- ii. Buck Creek shall be monitored and reported quarterly for Discharge Rate, Sulfate, Chloride and Hardness downstream of the associated outfall. This downstream monitoring shall be performed a sufficient distance downstream of the associated outfall to ensure that complete mixing has occurred. At such time that sufficient information has been collected regarding stream flow characteristics and in-stream contaminant concentrations, the permittee may request a re-evaluation of the monitoring frequency required herein for possible reduction or elimination. For the purpose of re-evaluating the downstream monitoring frequency of the receiving stream, "sufficient information" is defined as a minimum of ten (10) quarterly sampling events.

In the event that downstream monitoring of the receiving waters is eliminated during the term of this permit based on an evaluation of the quarterly data, a minimum of three (3) additional samples analyzed for the parameters identified above must be submitted with the permit renewal application a minimum of 180 days prior to expiration of this permit.

- iii. Buck Creek shall be monitored and reported annually for Discharge Rate, Sulfate, Chloride and Hardness upstream of the associated outfall.

Special Condition No. 14: Sediment Pond Operation and Maintenance (Outfall 002 – Reclamation Area Discharge):

- a. For discharges resulting from precipitation events, in addition to the alternate effluent (Discharge Condition Nos. II and III) monitoring requirements, as indicated on the applicable effluent pages of this Permit, discharges from Outfall 002 shall be monitored and reported for Discharge Rate, Sulfate, Chloride and Hardness.
- b. The following sampling and monitoring requirements are applicable to flow in Buck Creek which receive discharges from Outfall 002.

- i. All sampling and monitoring required under Special Condition No. 14(b)(ii) and (iii) below shall be performed during a discharge and monitoring event from the associated outfall.
- ii. Buck Creek shall be monitored and reported quarterly for Discharge Rate, Chloride, Sulfate and Hardness downstream of the associated outfall. This downstream monitoring shall be performed a sufficient distance downstream of the associated outfall to ensure that complete mixing has occurred. At such time that sufficient information has been collected regarding receiving stream flow characteristics and in-stream contaminant concentrations the permittee may request a re-evaluation of the monitoring frequency required herein for possible reduction or elimination. For the purpose of re-evaluating the downstream monitoring frequency of the receiving stream, "sufficient information" is defined as a minimum of ten (10) quarterly sampling events.

In the event that downstream monitoring of the receiving waters is eliminated during the term of this permit based on an evaluation of the quarterly data, a minimum of three (3) additional samples analyzed for the parameters identified above must be submitted with the permit renewal application a minimum of 180 days prior to expiration of this permit.

- iii. Buck Creek shall be monitored and reported annually for Discharge Rate, Chloride, Sulfate and Hardness upstream of the associated outfall.

Special Condition No. 15: Sediment Pond Operation and Maintenance (Outfalls 003, 009 and 010):

- a. For discharges resulting from precipitation events, in addition to the alternate effluent (Discharge Condition Nos. II and III) monitoring requirements, as indicated on the applicable effluent pages of this Permit, discharges from Outfalls 003, 009 and 010 shall be monitored and reported for Discharge Rate, Sulfate, Chloride and Hardness.
- b. The following sampling and monitoring requirements are applicable to flow in the unnamed tributaries to Rend Lake which receive discharges from Outfall 003, 009 and 010.

- i. All sampling and monitoring required under 15(b)(ii) and (iii) below shall be performed during a discharge and monitoring event from the associated outfall.
- ii. The unnamed tributaries to Rend Lake shall be monitored and reported quarterly for Discharge Rate, Chloride, Sulfate and Hardness downstream of the associated outfall. This downstream monitoring shall be performed a sufficient distance downstream of the associated outfall to ensure that complete mixing has occurred. At such time that sufficient information has been collected regarding receiving stream flow characteristics and in-stream contaminant concentrations the permittee may request a re-evaluation of the monitoring frequency required herein for possible reduction or elimination. For the purpose of re-evaluating the downstream monitoring frequency of the receiving stream, "sufficient information" is defined as a minimum of ten (10) quarterly sampling events.

NPDES Permit No. IL0004707

Special Conditions

In the event that downstream monitoring of the receiving waters is eliminated during the term of this permit based on an evaluation of the quarterly data, a minimum of three (3) additional samples analyzed for the parameters identified above must be submitted with the permit renewal application a minimum of 180 days prior to expiration of this permit.

- iii. The unnamed tributaries to Rend Lake shall be monitored and reported annually for Discharge Rate, Chloride, Sulfate and Hardness upstream of the associated outfall.

Special Condition No. 16: Data collected in accordance with Special Condition Nos. 13, 14 and 15 above will be utilized to evaluate the appropriateness of the effluent limits established in this Permit. Should the Agency's evaluation of this data indicate revised effluent limits are warranted; this permit may be reopened and modified to incorporate more appropriate effluent limitations. This data will also be used for determination of effluent limitations at the time of permit renewal.

Special Condition No. 17: Mercury shall be monitored quarterly until a minimum of ten (10) samples have been collected. This Mercury monitoring is required only under Discharge Condition Nos. I and/or IV and only during quarters in which there are discharges from the outfall which occur under Discharge Condition Nos. I and/or IV. Samples shall be collected and tested in accordance with USEPA 1631E using the option at Section 11.1.1.2 requiring the heating of samples at 50°C for 6 hours in a BrCl solution in closed vessels. This test method has a Method Detection Limit (MDL) of 0.5 ng/l (nanograms/liter). The results of such testing must be reported in "ng/l" (nanograms/liter) and submitted with the quarterly Discharge Monitoring Reports (DMRs). The Permittee may submit a written request to the Agency to discontinue quarterly Mercury monitoring if the sampling results show no reasonable potential to exceed the Mercury water quality standard.

The alkaline mine discharge from this facility shall be monitored and limited at all times as follows:

Outfall: (NUMBER(S)):

Discharge Condition	Parameters												
	Total Suspended Solids (3) (mg/l)		Iron (total) (3) (4) (mg/l)		pH (3) (S.U.)	Alkalinity/ Acidity (3)	Sulfate (1) (mg/l)	Chloride (mg/l)	Mn (total) (mg/l)	Hardness (5)	Mercury	Flow (MGD)	Settleable Solids (2) (ml/l)
	30 day average	daily maximum	30 day average	daily maximum									
I	35	70	(VAR)	(VAR)	6.5-9.0	Alk.>Acid	(WQS)	500	1.0	Monitor only	Monitor only	Measure When Sampling	-
II	-	-	-	-	6.0-9.0	-	(WQS)	500	-	Monitor only	-	Measure When Sampling	0.5
III	-	-	-	-	6.0-9.0	-	(WQS)	500	-	Monitor only	-	Measure When Sampling	-
IV	35	70	(VAR)	(VAR)	6.5-9.0	Alk.>Acid	(WQS)	500	1.0	Monitor only	Monitor only	Measure When Sampling	-

- I Dry weather discharge (base flow or mine pumpage) from the outfall.
- II In accordance with 35 Ill. Adm. Code 406.110(a), any discharge or increase in the volume of a discharge caused by precipitation within any 24-hour period less than or equal to the 10-year, 24 hour precipitation event (or snowmelt or equivalent volume) shall comply with the indicated limitations instead of those in 35 Ill. Adm. Code 406.106(b). The 10-year, 24-hour precipitation event for this area is considered to be (10-YR. PRECIP) inches.
- III In accordance with 35 Ill. Adm. Code 406.110(d), any discharge or increase in volume of a discharge caused by precipitation within any 24-hour period greater than the 10-year, 24-hour precipitation event (or snowmelt of equivalent volume) shall comply with the indicated limitations instead of those in 35 Ill. Adm. Code 406.106(b).
- IV Discharges continuing 24 hours after cessation of precipitation event that resulted in discharge. For outfalls which have no allowed mixing, monitoring requirements and permit limitations of Discharge Condition IV are identical to Discharge Condition I to which the outfall discharge has reverted.
- (1) Sulfate water quality standards and effluent limitations determined in accordance with 35 Ill. Adm. Code 302.208(h).
- (2) Settleable solids are monitored only as a result of a discharge due to precipitation events which exceed a predetermined 24-hour duration or snowmelt total. Settleable solids effluent limitations for alkaline mine discharges are contained in 35 Ill. Adm. Code 406.110.
- (3) Effluent standards for mine discharges are contained in 35 Ill. Adm. Code 406.106.
- (4) (Insert either pmt007a or pmt007b)
- (5) Hardness monitoring is required to determine the appropriateness of the sulfate permit limit.