

NPDES Permit No. IL0079588
Notice No. JAR:12053101.ajo

Public Notice Beginning Date: **July 11, 2012**

Public Notice Ending Date: **August 10, 2012**

National Pollutant Discharge Elimination System (NPDES)
Permit Program

Draft Modified NPDES Permit to Discharge into Waters of the State

Public Notice/Fact Sheet Issued By:

Illinois Environmental Protection Agency
Bureau of Water,
Division of Water Pollution Control
Permit Section
1021 North Grand Avenue East
Post Office Box 19276
Springfield, Illinois 62794-9276
217/782-0610

Name and Address of Discharger:

Natural Gas Pipeline Company of America, LLC
370 Van Gordon Street
Lakewood, Colorado 80228

Name and Address of Facility:

Natural Gas Pipeline Company of America
Various Locations
(Cook, DuPage, Kankakee, Moultrie, Piatt and Will Counties)

The Illinois Environmental Protection Agency (IEPA) has made a tentative determination to issue a NPDES permit to discharge into the waters of the state and has prepared a draft permit and associated fact sheet for the above named discharger. The Public Notice period will begin and end on the dates indicated in the heading of this Public Notice/Fact Sheet. The last day comments will be received will be on the Public Notice period ending date unless a commentor demonstrating the need for additional time requests an extension to this comment period and the request is granted by the IEPA. Interested persons are invited to submit written comments on the draft permit to the IEPA at the above address. Commentors shall provide his or her name and address and the nature of the issues proposed to be raised and the evidence proposed to be presented with regards to those issues. Commentors may include a request for public hearing. Persons submitting comments and/or requests for public hearing shall also send a copy of such comments or requests to the permit applicant. The NPDES permit and notice number(s) must appear on each comment page.

The application, engineer's review notes including load limit calculations, Public Notice/Fact Sheet, draft permit, comments received, and other documents are available for inspection and may be copied at the IEPA between 9:30 a.m. and 3:30 p.m. Monday through Friday when scheduled by the interested person.

If written comments or requests indicate a significant degree of public interest in the draft permit, the permitting authority may, at its discretion, hold a public hearing. Public notice will be given 45 days before any public hearing. Response to comments will be provided when the final permit is issued. For further information, please call Jaime Rabins at 217/782-0610.

The applicant is engaged in the transmission and storage of natural gas (SIC 4922). Waste water is generated from hydrostatic testing of natural gas transmission lines. Testing activities will result in an average discharge of 1.1 MGD of hydrostatic test water from outfall 002, 1.1 MGD of hydrostatic test water from outfall 003, 7.9 MGD of hydrostatic test water from outfall 004, and 0.12 MGD of hydrostatic test water from outfall 005, 4.1 MGD of hydrostatic test water from outfall 006, 3.6 MGD of hydrostatic test water from outfall 007, and 2.8 MGD of hydrostatic test water from outfall 008.

The following modifications are proposed:

Outfalls 006, 007 and 008 were added to the permit.

Outfall 001 was removed from the permit.

Application is made for new and existing discharges which are located in Cook, DuPage, Kankakee, Moultrie, Piatt and Will County, Illinois. The following information identifies the discharge point, receiving stream and stream classifications:

Outfall	Receiving Stream	Latitude		Longitude		Stream Classification	Biological Stream Characterization
002	Unnamed Pond	42° 04' 16"	North	88° 11' 18"	West	General Use	Not Rated
003	Unnamed Tributary to Spring Creek	42° 05' 35"	North	88° 11' 25"	West	General Use	Not Rated
004	Kress Creek	41° 51' 52"	North	88° 13' 13"	West	General Use	Not Rated
005	Des Plaines River	42° 01' 20"	North	87° 52' 27"	West	General Use	Not Rated
006	Kankakee River	41° 10' 35"	North	87° 57' 24"	West	General Use	B
007	Lake Shelbyville	39° 32' 25"	North	88° 40' 26"	West	General Use	Not Rated
008	Sangamon River	40° 00' 38"	North	88° 36' 45"	West	General Use	B

To assist you further in identifying the location of the discharge please see the attached map.

The stream segments receiving the discharge from outfalls 002, 003, and 004 are not on the draft 2010 Illinois Integrated Water Quality Report and Section 303(d) List as they have not been assessed. The receiving water has not been given an integrity rating or been listed as biologically significant in the 2008 Illinois Department of Natural Resources publication *Integrating Multiple Taxa in a Biological Stream Rating System*.

The stream segment G-28 receiving the discharge from outfall 005 is on the draft 2010 Illinois Integrated Water Quality Report and Section 303(d) List. The receiving water has not been given an integrity rating or been listed as biologically significant in the 2008 Illinois Department of Natural Resources publication *Integrating Multiple Taxa in a Biological Stream Rating System*. The impaired designated uses and pollutants causing impairment are tabulated below:

<u>Designated Uses</u>	<u>Pollutants Causing Impairment</u>
Fish Consumption	Mercury and Polychlorinated biphenyls (PCB's)
Primary Contact	Fecal Coliform Bacteria
Aquatic Life	Alteration of Stream-Side Vegetative Cover (Non-Pollutant), Chloride, Other Flow Regime Alterations (Non-Pollutant) and Total Phosphorus

The stream segment F-12 receiving the discharge from outfall 006 is on the draft 2010 Illinois Integrated Water Quality Report and Section 303(d) List. The receiving water has not been listed as biologically significant in the 2008 Illinois Department of Natural Resources publication *Integrating Multiple Taxa in a Biological Stream Rating System*. The impaired designated uses and pollutants causing impairment are tabulated below:

<u>Designated Uses</u>	<u>Pollutants Causing Impairment</u>
Fish Consumption	Mercury and Polychlorinated biphenyls (PCB's)
Public Water Supply	Manganese

The waterbody segment ROC receiving the discharge from outfall 007 is on the draft 2010 Illinois Integrated Water Quality Report and Section 303(d) List. The receiving water has not been given an integrity rating or been listed as biologically significant in the 2008 Illinois Department of Natural Resources publication *Integrating Multiple Taxa in a Biological Stream Rating System*. The impaired designated uses and pollutants causing impairment are tabulated below:

<u>Designated Uses</u>	<u>Pollutants Causing Impairment</u>
Aesthetic Quality	Aquatic Plants (non-pollutant) and Total Suspended Solids

The stream segment E-18 receiving the discharge from outfall 008 is on the draft 2010 Illinois Integrated Water Quality Report and Section 303(d) List. The receiving water has not been listed as biologically significant in the 2008 Illinois Department of Natural Resources publication *Integrating Multiple Taxa in a Biological Stream Rating System*. The impaired designated uses and pollutants causing impairment are tabulated below:

<u>Designated Uses</u>	<u>Pollutants Causing Impairment</u>
Primary Contact	Fecal Coliform

The discharge(s) from the facility shall be monitored and limited at all times as follows:

Outfall(s): 005 Hydrostatic Test Water (DAF = 0.12 MGD)
 006 Hydrostatic Test Water (DAF = 4.1 MGD)
 007 Hydrostatic Test Water (DAF = 3.6 MGD)
 008 Hydrostatic Test Water (DAF = 2.8 MGD)

PARAMETER	LOAD LIMITS lbs/day DAF (DMF)		REGULATION	CONCENTRATION LIMITS mg/l		REGULATION
	30 DAY AVERAGE	DAILY MAXIMUM		30 DAY AVERAGE	DAILY MAXIMUM	
Flow (MGD)						
pH	Shall be within the range of 6.0 to 9.0 standard units					35 IAC 304.125
Total Suspended Solids				15	30	35 IAC 304.124
Oil and Grease				15	30	35 IAC 304.124
Iron				2	4	35 IAC 304.124
Outfall(s):	002 Hydrostatic Test Water (DAF = 1.1 MGD) 003 Hydrostatic Test Water (DAF = 1.1 MGD) 004 Hydrostatic Test Water (DAF = 7.9 MGD)					
Flow (MGD)						
pH	Shall be within the range of 6.5 to 9.0 standard units					35 IAC 302.204
Total Suspended Solids				15	30	35 IAC 304.124
Oil and Grease				15	30	35 IAC 304.124
Iron				2	4	35 IAC 304.124
Total Residual Chlorine					0.05	35 IAC 302.208 40 CFR 125.3

The following explain the conditions of the proposed permit:

The special conditions clarify flow monitoring, pH limits, monitoring locations, DMR submission requirements, withdrawal of source water, and various other discharge requirements.

Antidegradation Assessment for Natural Gas Pipeline Co.
NPDES Permit No. IL0079588 Kankakee, Moultrie and Piatt Counties

The subject facility has applied for an NPDES permit for the hydrostatic testing of an existing natural gas pipeline. There will be three discharge locations. Outfall number, source water, receiving water body and volume of flow are given below.

Identification and Characterization of the Affected Water Body.

Outfall 006 will be a discharge of Kankakee River sourced test water back to the Kankakee River at a total test volume of 4.1 MG. The Kankakee River (segment code F-12) has a 7Q10 flow of 464 cfs and is a General Use water. The Kankakee River is listed on the draft 2010 Illinois Integrated Water Quality Report and Section 303(d) List as impaired for fish consumption and public water supply uses. The causes of fish consumption use impairment are mercury and PCBs. The cause of public water supply use impairment is manganese. The Kankakee River is listed as a biologically significant stream in the 2008 Illinois Department of Natural Resources Publication *Integrating Multiple Taxa in a Biological Stream Rating System*, and is given an integrity rating of "B" at this location. The Kankakee River is designated as an enhanced water pursuant to the dissolved oxygen water quality standard at this location. The IDNR WIRT system lists the river redhorse, pallid shiner, black sandshell mussel and purple wartyback mussel, state threatened or endangered aquatic species, as residing in the Kankakee River.

Outfall 007 will be a discharge of Lake Shelbyville sourced test water back to Lake Shelbyville at a total test volume of 3.6 MG. Lake Shelbyville (segment code ROC) has a 7Q10 flow of 5.5 cfs and is a General Use water. Lake Shelbyville is listed on the draft 2010 Illinois Integrated Water Quality Report and Section 303(d) List as impaired for aesthetic quality use. The causes of this use impairment are given as aquatic plants (non-pollutant) and total suspended solids. Lake Shelbyville is not listed as a biologically significant stream in the 2008 Illinois Department of Natural Resources Publication *Integrating Multiple Taxa in a Biological Stream Rating System*, nor is it given an integrity rating. Lake Shelbyville is not designated as an enhanced water pursuant to the dissolved oxygen water quality standard. The IDNR WIRT system does not list any state threatened or endangered aquatic species as residing in Lake Shelbyville.

Outfall 008 will be a discharge of Sangamon River sourced test water back to the Sangamon River with a maximum total test volume of 2.8 MG. The Sangamon River (segment code E-18) has a 7Q10 flow of 2.9 cfs and is a General Use water. The Sangamon River is listed on the draft 2010 Illinois Integrated Water Quality Report and Section 303(d) List as impaired for primary contact use with cause given as fecal coliform bacteria. The Sangamon River is listed as a biologically significant stream in the 2008 Illinois Department of Natural Resources Publication *Integrating Multiple Taxa in a Biological Stream Rating System*, and is given an integrity rating of "B" at this location. The Sangamon River is designated as an enhanced water pursuant to the dissolved oxygen water quality standard. The IDNR WIRT system does not list any state threatened or endangered aquatic species as residing in the Sangamon River.

Identification of Proposed Pollutant Load Increases or Potential Impacts on Uses.

Parameters that will increase in loading are associated with residual materials in the pipeline. Total suspended solids, oil and grease, and iron may be suspended in the test water originating from the inside of the pipe, valves and fittings of the pipeline. Given the natural gas nature of the pipeline, these additions to the test water are anticipated to be minimal. No adverse impacts to the water bodies are anticipated from the hydrostatic tests.

Fate and Effect of Parameters Proposed for Increased Loading.

The iron and total suspended solids discharged will be regulated by the state effluent standards and will become part of the bed sediment of the receiving waters. Oil and grease will also be regulated with the state effluent standard and therefore no visible remnant will be discharged. No adverse effects are anticipated in the receiving waters.

Purpose and Social & Economic Benefits of the Proposed Activity.

It is vitally important that natural gas pipelines be hydrostatically tested to ensure the safety of the nearby communities. Regulations require this testing.

Assessments of Alternatives for Less Increase in Loading or Minimal Environmental Degradation.

The pipeline owner has chosen responsible methods of hydrostatic testing. Waters used in the testing are taken from the receiving stream. Therefore, no possibility exists to spread invasive species during the testing. Erosion control measures will be taken at the points of discharge. This consists of straw bales and silt fences constructed in such a way as to disperse energy and filter particles.

The hydrostatic test methods chosen are the accepted norm for these projects. Hydrostatic testing is a very short-term activity. The discharges will last only one day. Arranging for effluents to be land applied, sent to a POTW or other alternatives are not practical for this type of discharge. Discharging the effluents to local surface waters in a responsible manner has developed as the proper method of dealing with the water needed for the testing.

Summary Comments of the Illinois Department of Natural Resources, Regional Planning Commissions, Zoning Boards or Other Entities

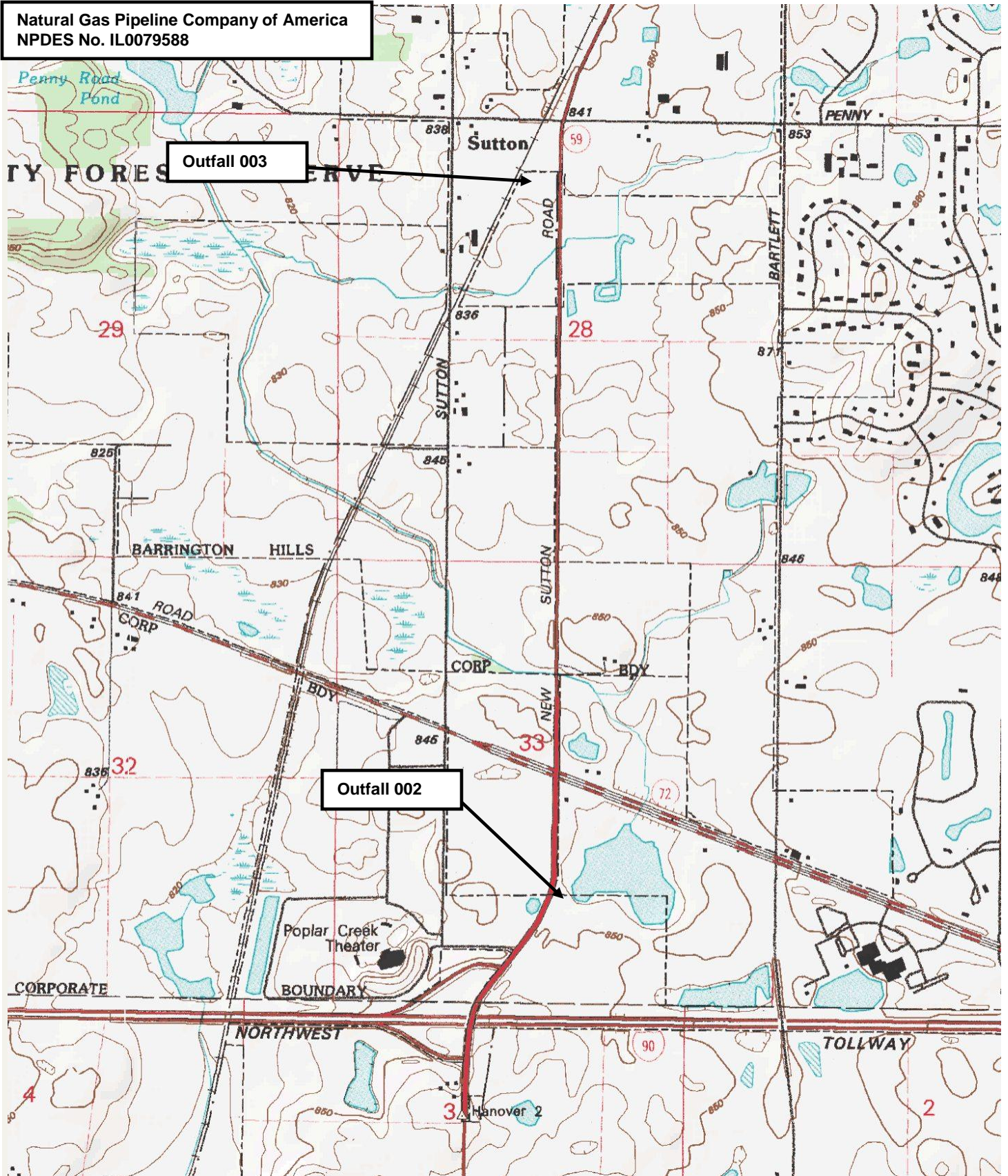
The Illinois Department of Natural Resources was consulted regarding threatened and endangered species issues for each discharge location via the EcoCAT system on April 16, 2012. It was immediately determined that no threatened or endangered species reside in

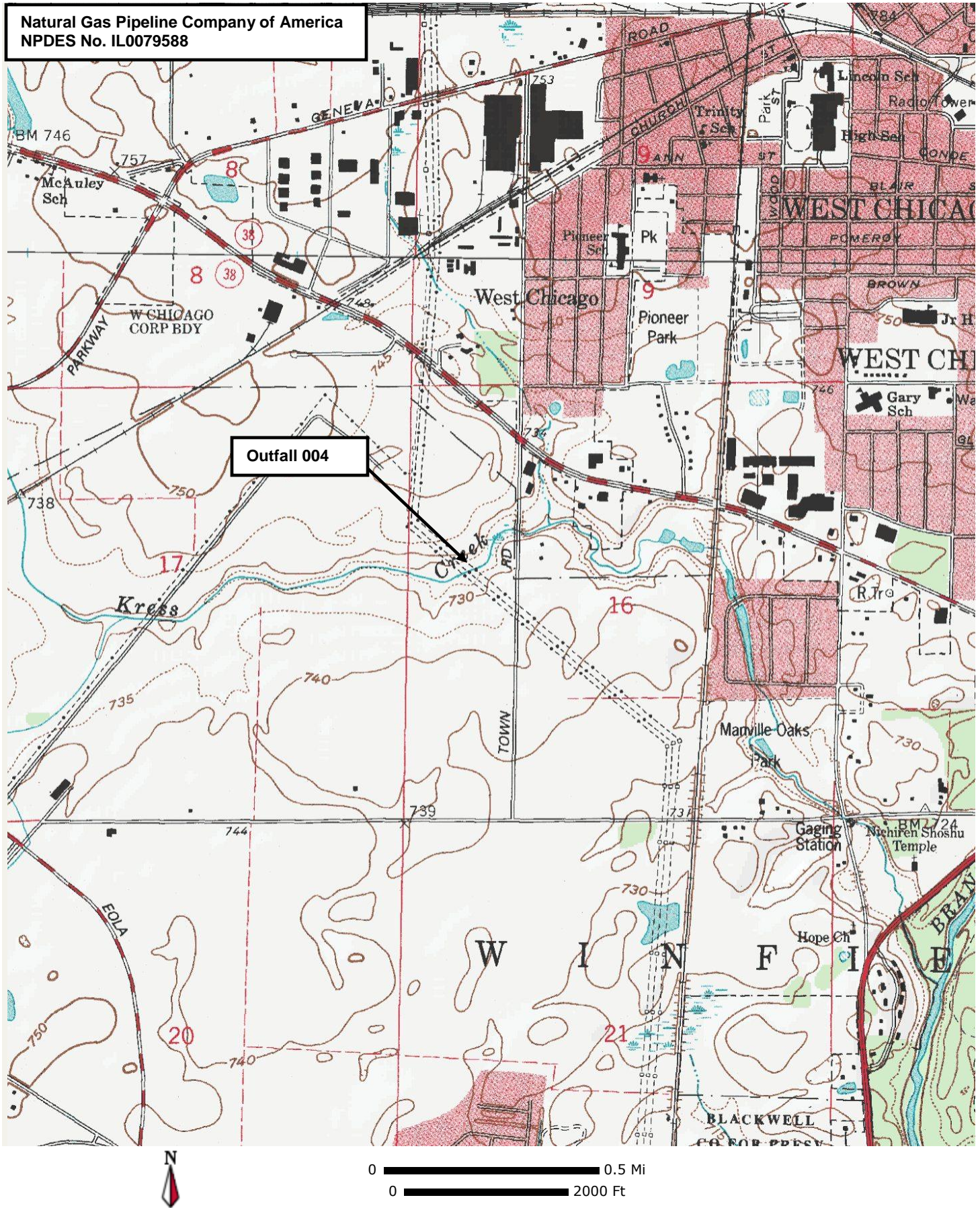
Lake Shelbyville. No aquatic species were identified at the Sangamon River site; however, IDNR will review this discharge further. Several aquatic state threatened or endangered species were identified at the Kankakee River site and IDNR will review further. Consultation will be terminated after IDNR considers any effects at these two sites.

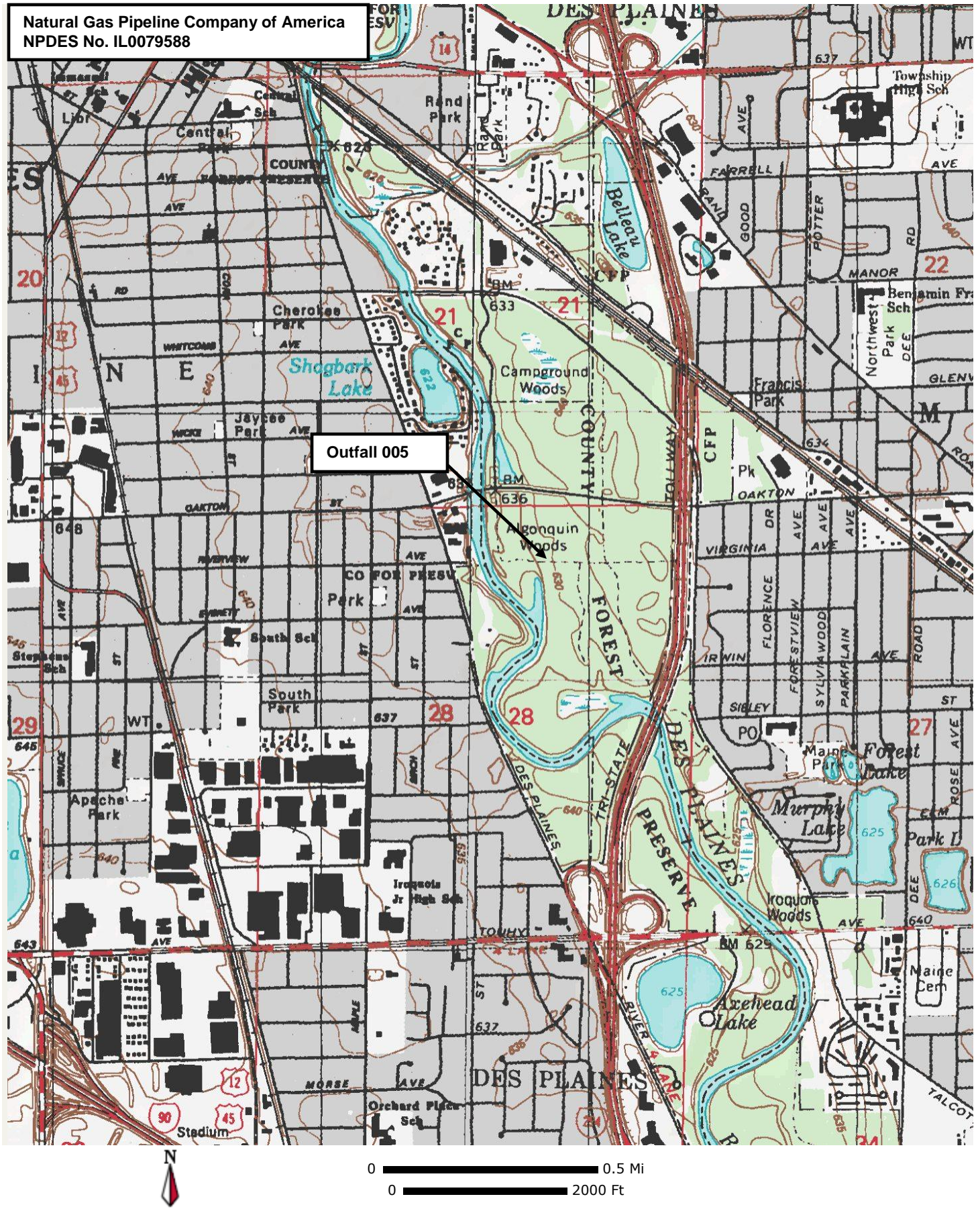
Agency Conclusion.

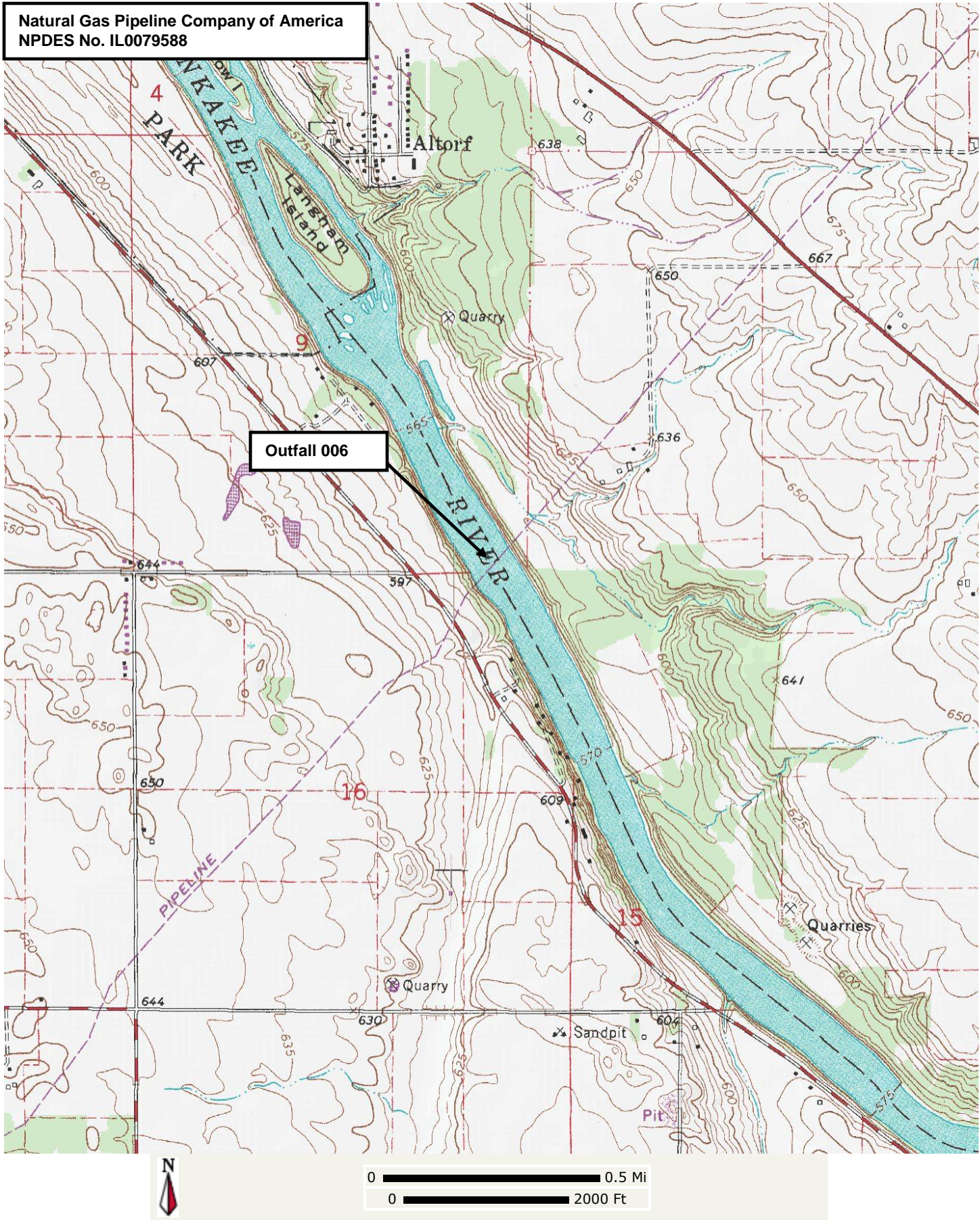
This preliminary assessment was conducted pursuant to the Illinois Pollution Control Board regulation for Antidegradation found at 35 Ill. Adm. Code 302.105 (antidegradation standard) and was based on the information available to the Agency at the time the draft permit was written. We tentatively find that the proposed activity will result in the attainment of water quality standards; that all existing uses of the receiving stream will be maintained; that all technically and economically reasonable measures to avoid or minimize the extent of the proposed increase in pollutant loading have been incorporated into the proposed activity; and that this activity will benefit the communities at large by ensuring the safety of the natural gas pipeline. Comments received during the NPDES permit public notice period will be evaluated before a final decision is made by the Agency.

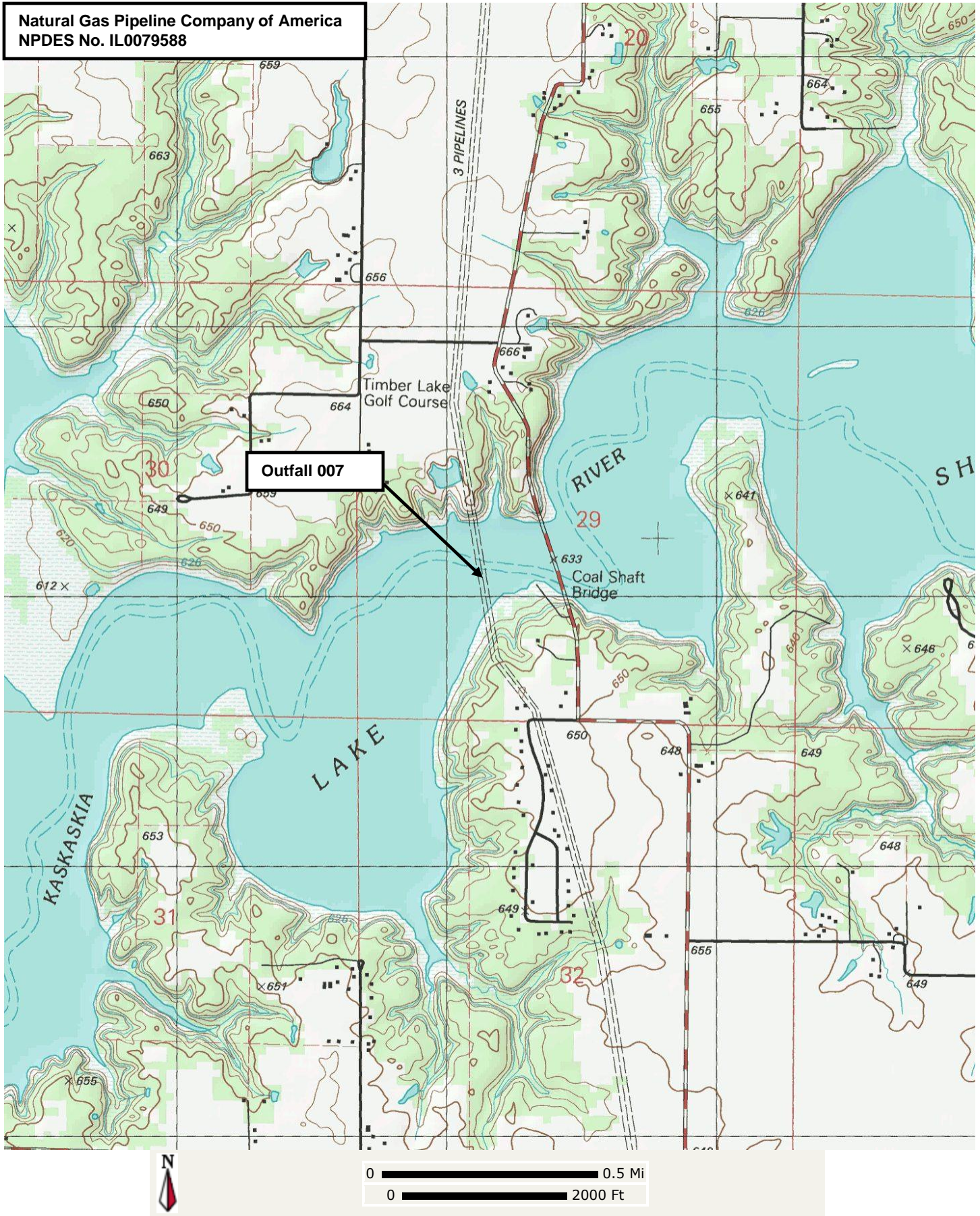
Natural Gas Pipeline Company of America
NPDES No. IL0079588



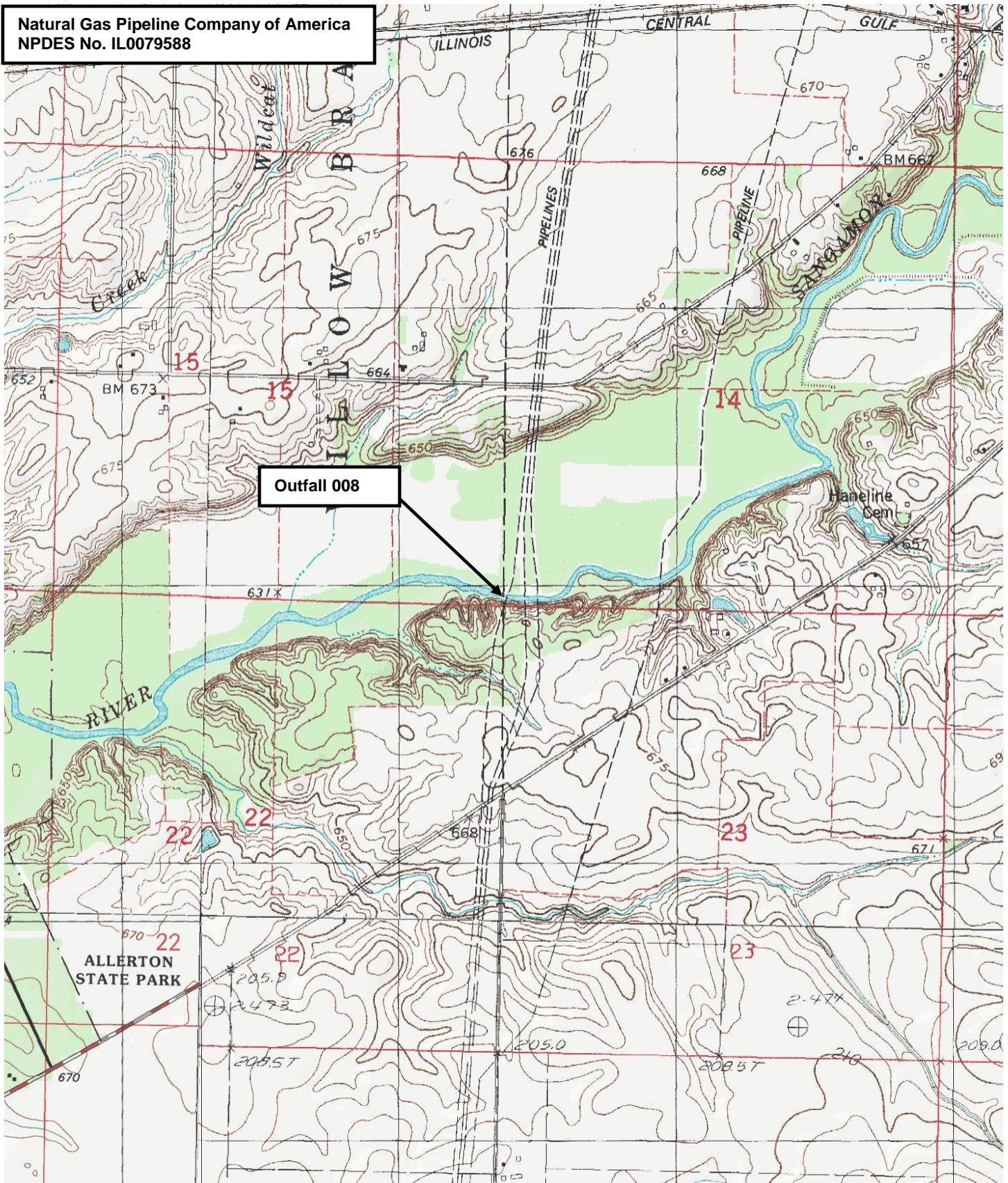








Natural Gas Pipeline Company of America
NPDES No. IL0079588



NPDES Permit No. IL0079588

Illinois Environmental Protection Agency

Division of Water Pollution Control

1021 North Grand Avenue East

Post Office Box 19276

Springfield, Illinois 62794-9276

NATIONAL POLLUTANT DISCHARGE ELIMINATION SYSTEM

Modified (NPDES) Permit

Expiration Date: July 31, 2016

Issue Date: August 10, 2011

Effective Date: August 10, 2011

Modification Date: May 9, 2012

2nd Modification Date:

Name and Address of Permittee:

Natural Gas Pipeline Company of America, LLC
370 Van Gordon Street
Lakewood, Colorado 80228

Facility Name and Address:

Natural Gas Pipeline Company of America
Various Locations
(Cook, DuPage, Kankakee, Moultrie, Piatt and Will
Counties)

Discharge Number and Name:

002 Hydrostatic Test Water
003 Hydrostatic Test Water
004 Hydrostatic Test Water
005 Hydrostatic Test Water
006 Hydrostatic Test Water
007 Hydrostatic Test Water
008 Hydrostatic Test Water

Receiving Waters:

Unnamed Pond
Unnamed Tributary to Spring Creek
Kress Creek
Des Plaines River
Kankakee River
Lake Shelbyville
Sangamon River

In compliance with the provisions of the Illinois Environmental Protection Act, Title 35 of Ill. Adm. Code, Subtitle C and/or Subtitle D, Chapter 1, and the Clean Water Act (CWA), the above-named permittee is hereby authorized to discharge at the above location to the above-named receiving stream in accordance with the standard conditions and attachments herein.

Permittee is not authorized to discharge after the above expiration date. In order to receive authorization to discharge beyond the expiration date, the permittee shall submit the proper application as required by the Illinois Environmental Protection Agency (IEPA) not later than 180 days prior to the expiration date.

Alan Keller, P.E.
Manager, Permit Section
Division of Water Pollution Control

SAK:JAR:12053101.ajo

NPDES Permit No. IL0079588

Effluent Limitations and Monitoring

1. From the 2nd modification date of this permit until the expiration date, the effluent of the following discharge(s) shall be monitored and limited at all times as follows:

Outfall(s): 005 Hydrostatic Test Water (DAF = 0.12 MGD)
 006 Hydrostatic Test Water (DAF = 4.1 MGD)
 007 Hydrostatic Test Water (DAF = 3.6 MGD)
 008 Hydrostatic Test Water (DAF = 2.8 MGD)

PARAMETER	LOAD LIMITS lbs/day <u>DAF (DMF)</u>		CONCENTRATION <u>LIMITS mg/l</u>		SAMPLE FREQUENCY	SAMPLE TYPE
	30 DAY AVERAGE	DAILY MAXIMUM	30 DAY AVERAGE	DAILY MAXIMUM		
Flow (MGD)	See Special Condition 1				Daily When Discharging	
pH	See Special Condition 2				Daily When Discharging	Grab
Total Suspended Solids			15	30	Daily When Discharging	Grab
Oil and Grease			15	30	Daily When Discharging	Grab
Iron			2	4	Daily When Discharging	Grab

NPDES Permit No. IL0079588

Effluent Limitations and Monitoring

1. From the 2nd modification date of this permit until the expiration date, the effluent of the following discharge(s) shall be monitored and limited at all times as follows:

Outfall(s): 002 Hydrostatic Test Water (DAF = 1.1 MGD)
 003 Hydrostatic Test Water (DAF = 1.1 MGD)
 004 Hydrostatic Test Water (DAF = 7.9 MGD)

PARAMETER	LOAD LIMITS lbs/day DAF (DMF)		CONCENTRATION LIMITS mg/l		SAMPLE FREQUENCY	SAMPLE TYPE
	30 DAY AVERAGE	DAILY MAXIMUM	30 DAY AVERAGE	DAILY MAXIMUM		
Flow (MGD)	See Special Condition 1				Daily When Discharging	
pH	See Special Condition 14				Daily When Discharging	Grab
Total Suspended Solids			15	30	Daily When Discharging	Grab
Oil and Grease			15	30	Daily When Discharging	Grab
Iron			2	4	Daily When Discharging	Grab
Total Residual Chlorine	See Special Condition 15			0.05	Daily When Discharging	Grab

NPDES Permit No. IL0079588

Special Conditions

SPECIAL CONDITION 1. Flow shall be measured in units of Million Gallons per Day (MGD) and reported as a monthly average and a daily maximum value on the monthly Discharge Monitoring Report.

SPECIAL CONDITION 2. The pH shall be in the range 6.0 to 9.0. The monthly minimum and monthly maximum values shall be reported on the DMR form.

SPECIAL CONDITION 3. Samples taken in compliance with the effluent monitoring requirements shall be taken at a point representative of the discharge, but prior to entry into the receiving stream.

SPECIAL CONDITION 4. The Permittee shall record monitoring results on Discharge Monitoring Report (DMR) Forms using one such form for each outfall each month.

In the event that an outfall does not discharge during a monthly reporting period, the DMR Form shall be submitted with no discharge indicated.

The Permittee may choose to submit electronic DMRs (eDMRs) instead of mailing paper DMRs to the IEPA. More information, including registration information for the eDMR program, can be obtained on the IEPA website, <http://www.epa.state.il.us/water/edmr/index.html>.

The completed Discharge Monitoring Report forms shall be submitted to IEPA no later than the 15th day of the following month, unless otherwise specified by the permitting authority.

Permittees not using eDMRs shall mail Discharge Monitoring Reports with an original signature to the IEPA at the following address:

Illinois Environmental Protection Agency
Division of Water Pollution Control
1021 North Grand Avenue East
Post Office Box 19276
Springfield, Illinois 62794-9276

Attention: Compliance Assurance Section, Mail Code # 19

SPECIAL CONDITION 5. If an applicable effluent standard or limitation is promulgated under Sections 301(b)(2)(C) and (D), 304(b)(2), and 307(a)(2) of the Clean Water Act and that effluent standard or limitation is more stringent than any effluent limitation in the permit or controls a pollutant not limited in the NPDES Permit, the Agency shall revise or modify the permit in accordance with the more stringent standard or prohibition and shall so notify the permittee.

SPECIAL CONDITION 6. In addition to other requirements of this permit, no effluent shall contain settleable solids, floating debris, visible oil, grease, scum, or sludge solids. Color (including color resulting from dyes or tracers in the hydrostatic test water), odor and turbidity must be reduced to below obvious levels.

SPECIAL CONDITION 7. The permittee shall provide telephone notification to the IEPA Des Plaines Regional Office, (847) 294-4000, at least 24 hours prior to any hydrostatic pipeline testing which may result in a discharge.

SPECIAL CONDITION 8. Appropriate measures shall be taken to prevent water quality impacts resulting from soil erosion due to the discharge. The discharge flow rate shall be controlled so as not to cause scouring or other damage to stream beds or banks.

SPECIAL CONDITION 9. Solid wastes such as straw used for filtering or erosion control shall be disposed of in accordance with state and federal law.

SPECIAL CONDITION 10. The permittee shall only discharge hydrostatic test water to the watersheds from which it was withdrawn.

SPECIAL CONDITION 11. In the event that the permittee shall require the use of water treatment additives, the permittee must request a change in this permit in accordance with the Standard Conditions - Attachment H.

SPECIAL CONDITION 12. In the event the permittee requires a new discharge location, the permittee must complete and submit application forms 1 and 2D for each new location.

SPECIAL CONDITION 13. When test water is discharged to the same waterbody from which it was withdrawn, compliance with the numerical effluent standards is not required when effluent concentrations in excess of the standards result entirely from influent contamination, evaporation, and/or the incidental addition of traces of materials not utilized or produced in the hydrostatic test activity that is the source of the waste.

NPDES Permit No. IL0079588

Special Conditions

SPECIAL CONDITION 14. The pH shall be in the range 6.5 to 9.0. The monthly minimum and monthly maximum values shall be reported on the DMR form.

SPECIAL CONDITION 15. All samples for total residual chlorine (TRC) shall be analyzed by an applicable method contained in 40 CFR 136, equivalent in accuracy to low-level amperometric titration. Any analytical variability of the method used shall be considered when determining the accuracy and precision of the results obtained.

