

# ISGS Earth Systems Visualization Laboratory: A 3-D Visualization Resource at the University of Illinois

Donald A. Keefer

Prairie Research Institute

University of Illinois at Urbana Champaign

# Earth Systems Visualization Laboratory

- Advanced imaging and analysis tools and expertise, targeted to earth science research
- Collaborative, 3-D immersion workspace
- Focal point for development of new research, tools and techniques



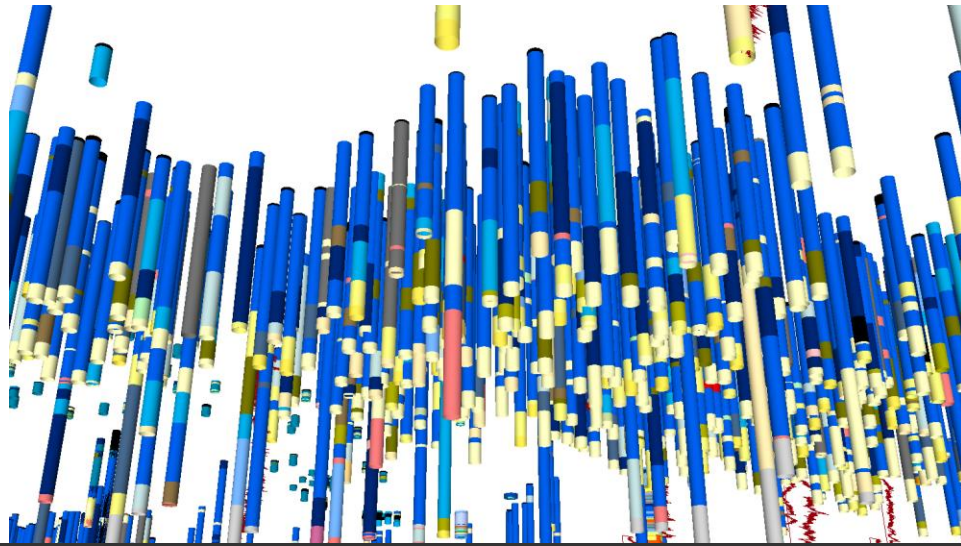




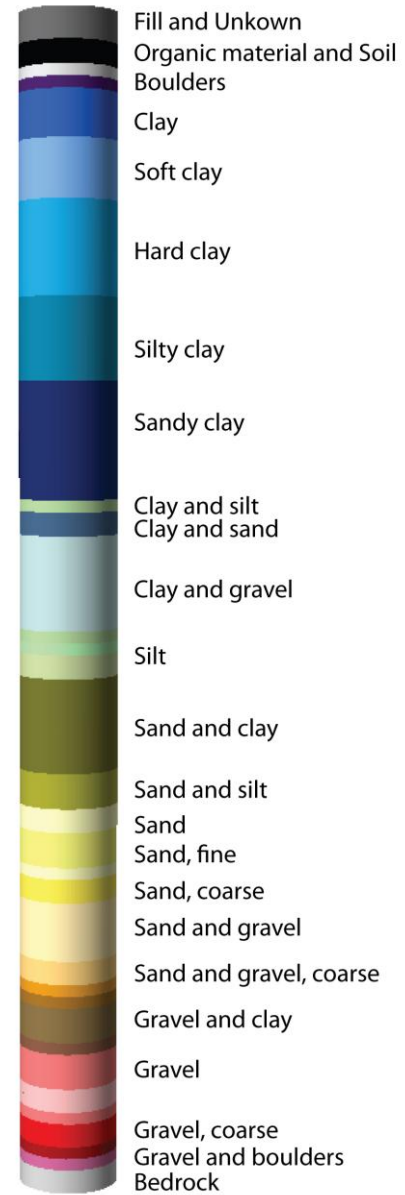
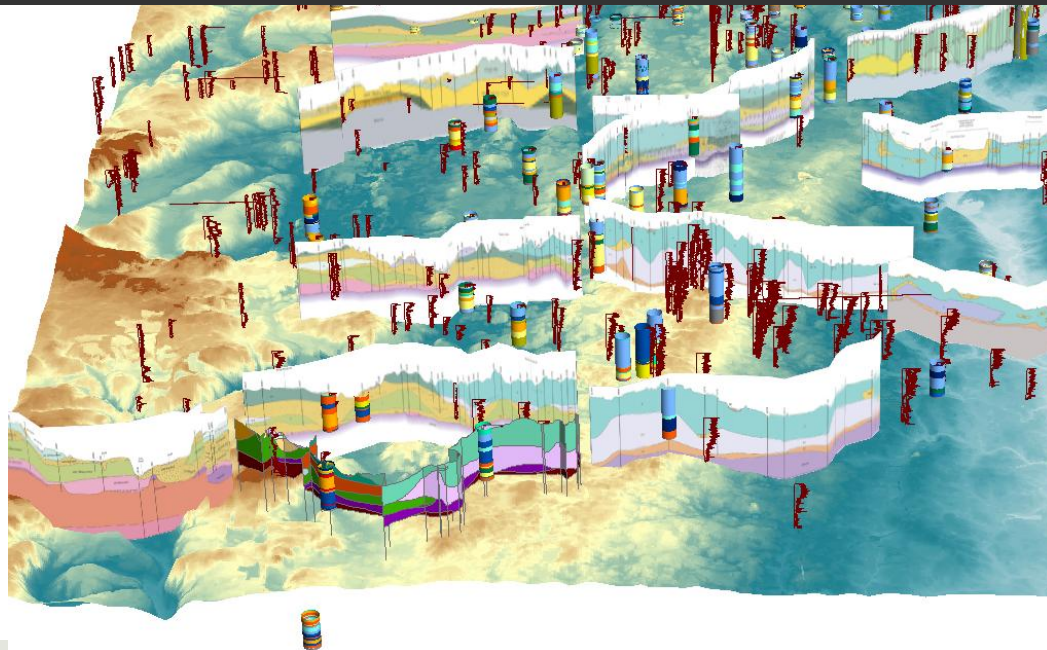
# Current Commercial Software

- GeoVisionary
- ArcGIS
- GSI3D
- ParaView
- Surfer
- Rockworks
- Mathematica
- MaPublisher
- Adobe CS4
- Geographic Imager
- Imagine
- MARS Explorer
- Isatis
- ...

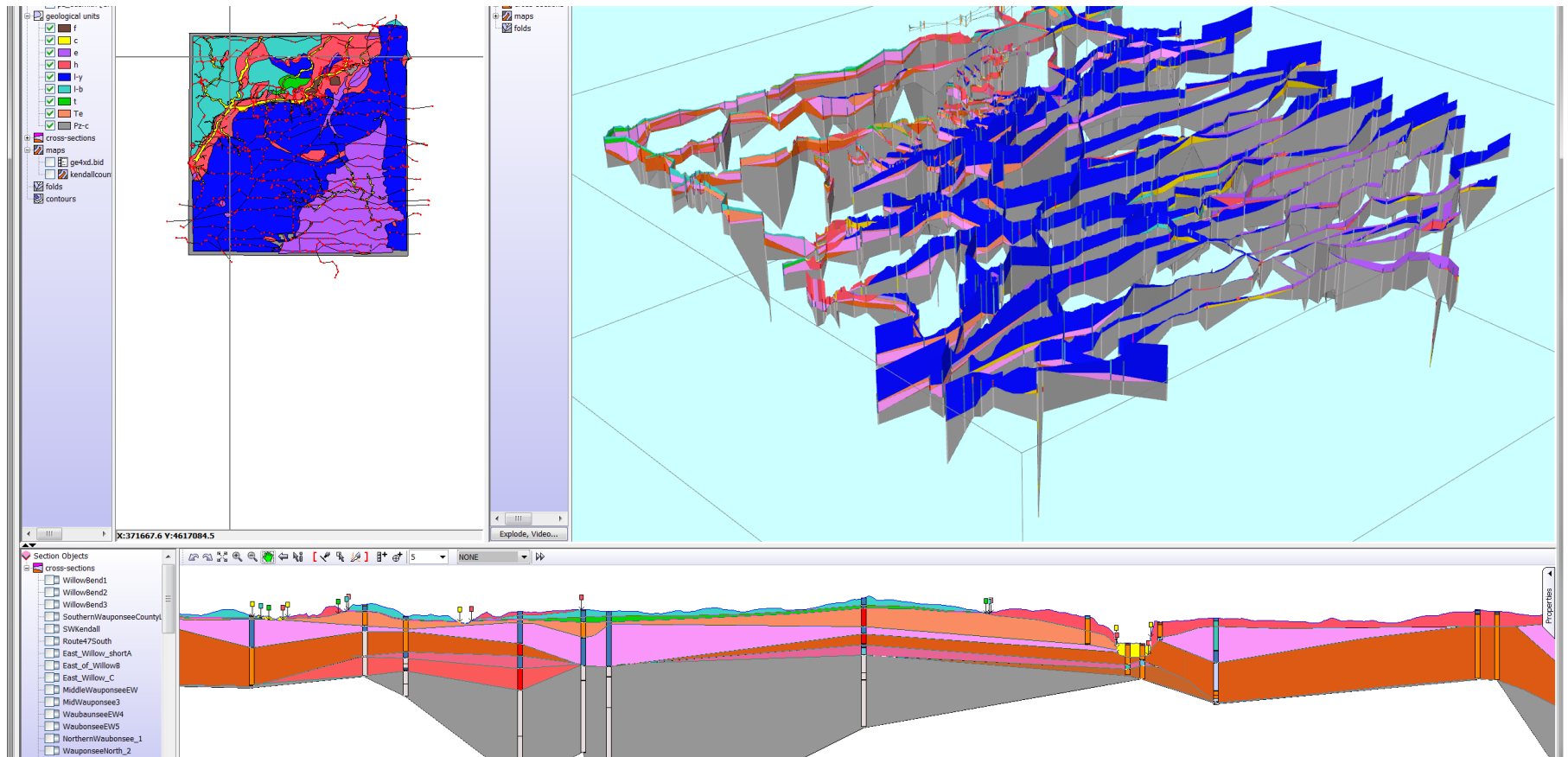




# GeoVisionary & ArcScene

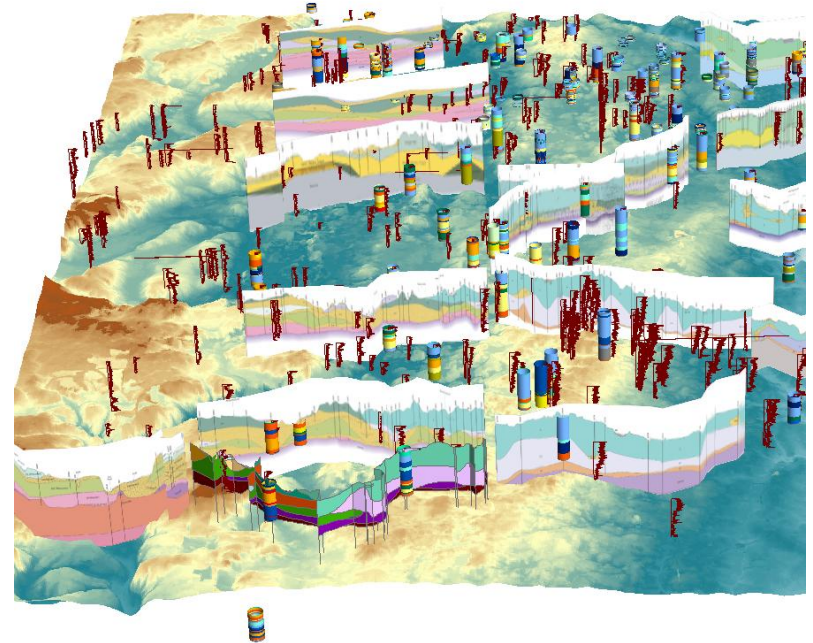


# GSi3D



# Custom Software and Tools

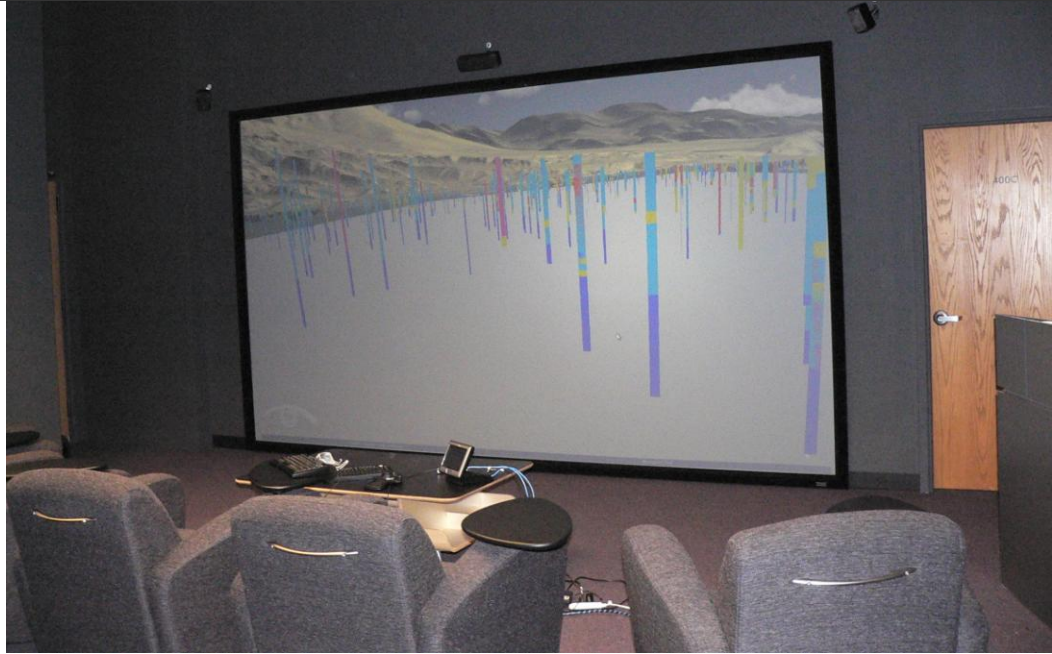
- ArcScene, ArcMap tools for 3-D geologic mapping support
- MFV (MODFLOW Viewer): visualization and analysis of flow paths from MODFLOW/MODPATH
- RVA (Reservoir Visualization and Analysis): advanced visualization, data analysis and data mining for unconventional oil and gas resources
- GSI3D support scripts





# ESVL Facilities

- Custom 2-room suite on 4<sup>th</sup> floor, Natural Resources Building
- 14'x8' back projected screen
- High-resolution projector
- Active stereo capabilities
- Flexible working configuration
- Multiple visualization computers with 18Tb data storage
- Large viewing room accommodates up to 20 people
- High resolution video camera for internet meetings

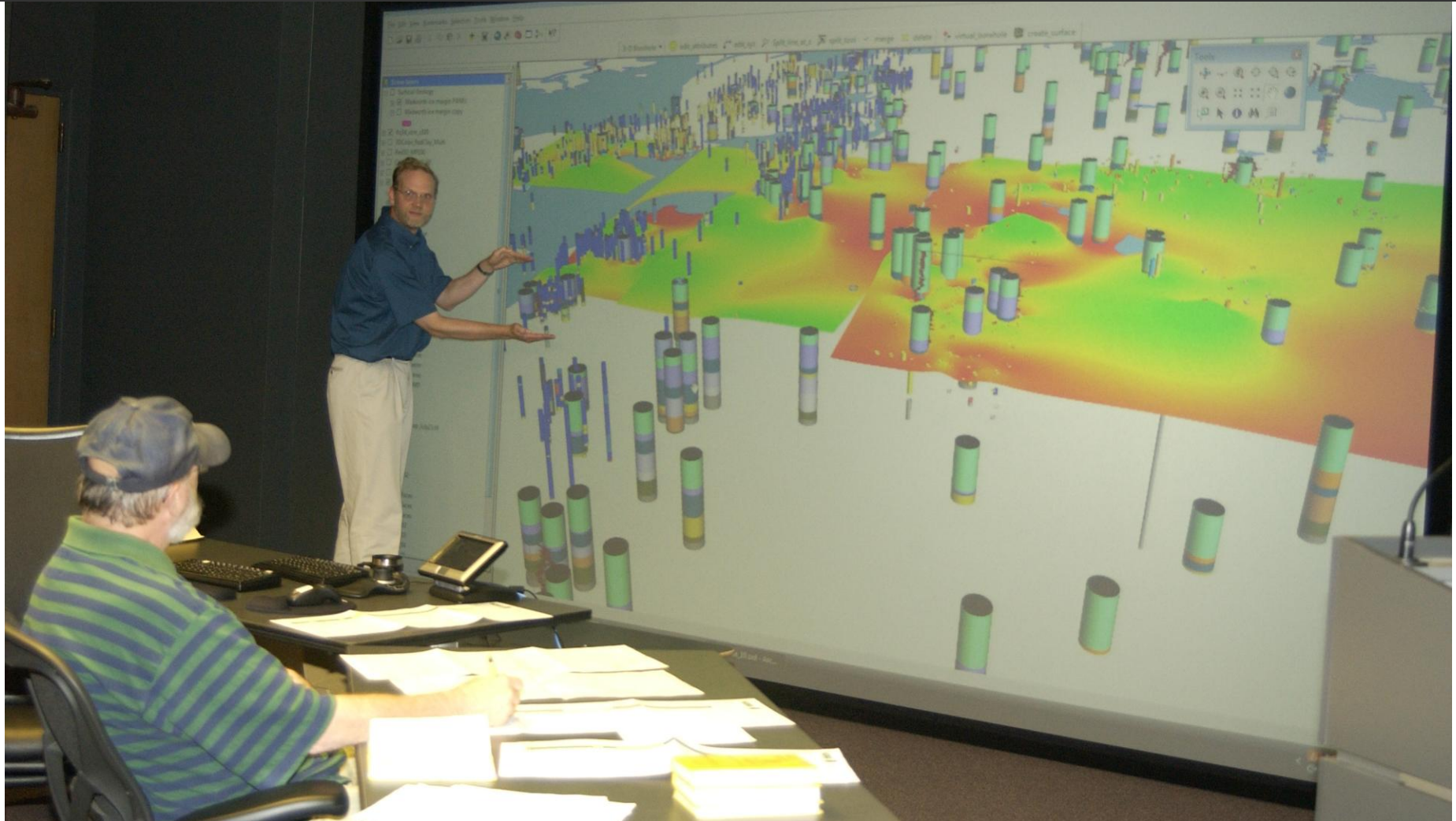


# Flexible Meeting Space



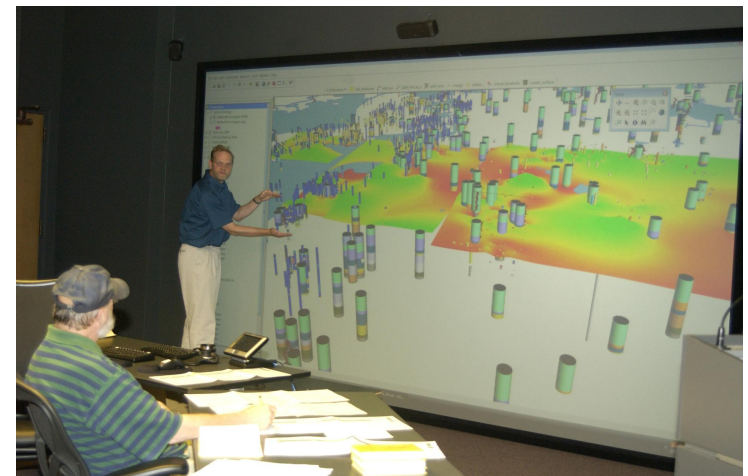
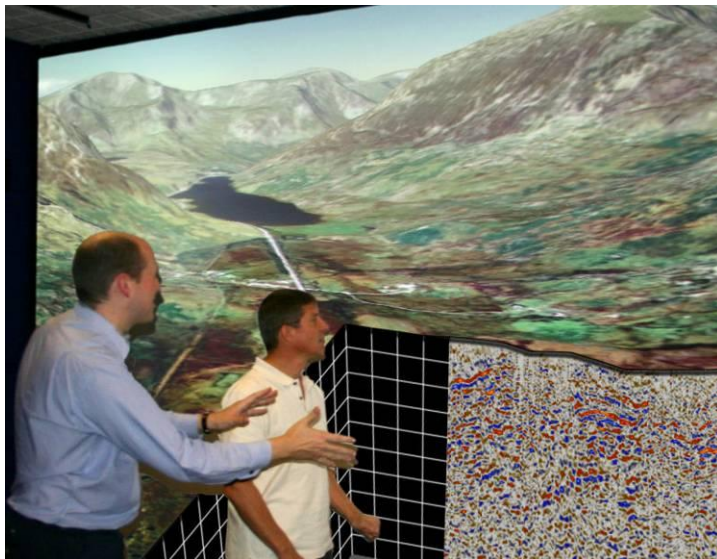


# Interactive Working Environment



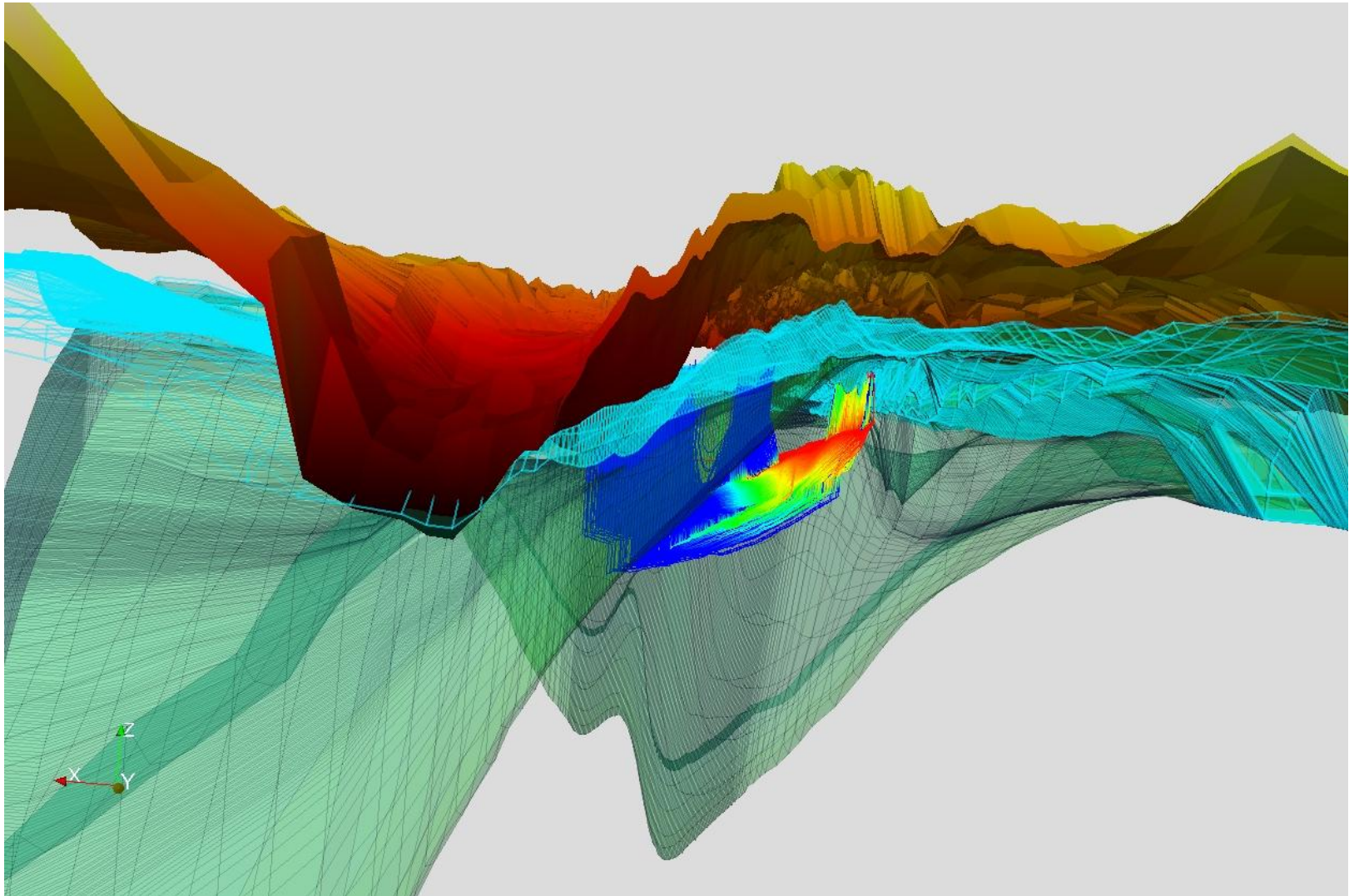
# Collaborative Opportunities

- Project team meetings
- Internet-based meetings
- Outreach workshops
- Visualization-focused presentations
- Education and training

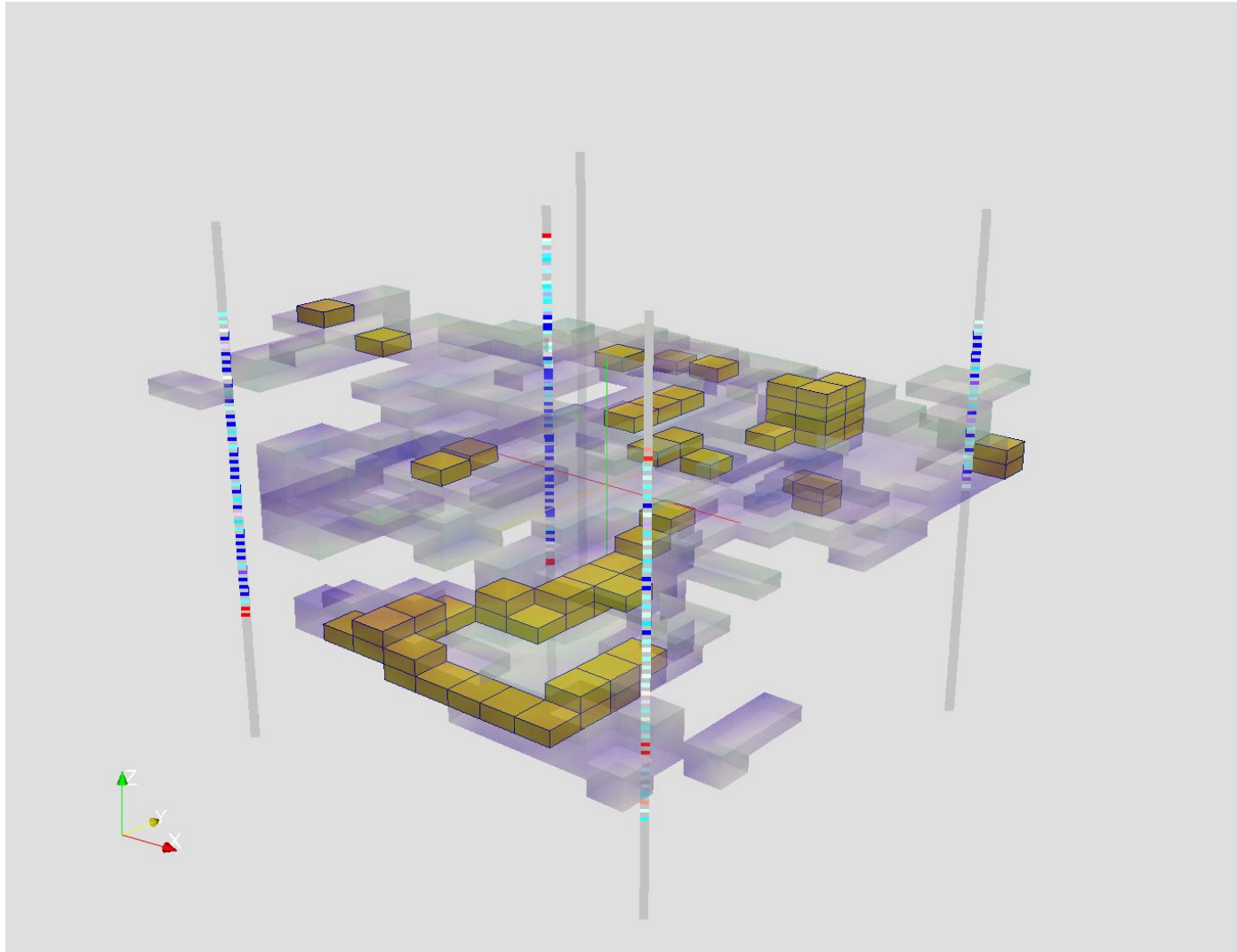




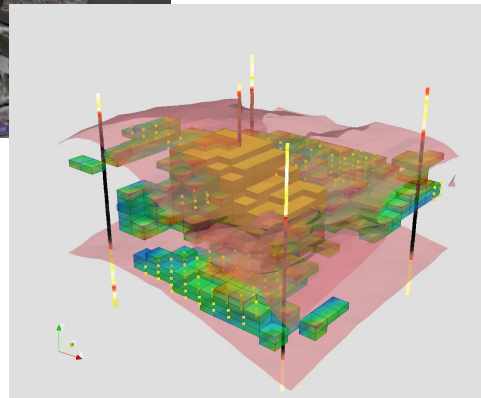
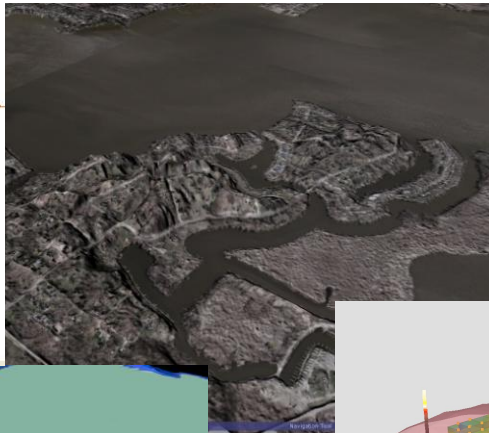
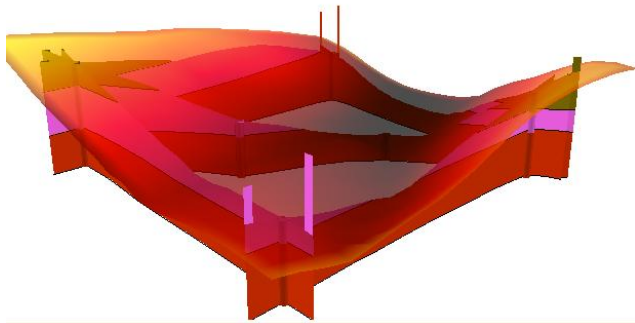
# MFV: MODFLOW Viewer














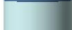





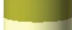





# RVA (Reservoir Visualization and Analysis)







-  Fill and Unknown
-  Organic material and Soil
-  Boulders
-  Clay
-  Soft clay
-  Hard clay
-  Silty clay
-  Sandy clay
-  Clay and silt
-  Clay and sand
-  Clay and gravel
-  Silt
-  Sand and clay
-  Sand and silt
-  Sand, fine
-  Sand, coarse
-  Sand and gravel
-  Sand and gravel, coarse
-  Gravel and clay
-  Gravel
-  Gravel, coarse
-  Gravel and boulders
-  Bedrock

