

NPDES Permit No. IL0059137

Notice No. IL0059137-12.TTL

Public Notice Beginning Date: **June 19, 2012**

Public Notice Ending Date: **July 19, 2012**

National Pollutant Discharge Elimination System (NPDES)  
Permit Program

PUBLIC NOTICE/FACT SHEET  
of  
Draft Reissued NPDES Permit to Discharge into Waters of the State

Public Notice/Fact Sheet Issued By:

Illinois EPA  
Division of Water Pollution Control  
Permit Section  
1021 North Grand Avenue East  
Post Office Box 19276  
Springfield, Illinois 62794-9276  
217/782-0610

Name and Address of Permittee:

City of Atlanta  
107 N.E. First Street, P.O. Box 385  
Atlanta, Illinois 61723

Name and Address of Facility:

City of Atlanta-STP  
2000 First Street  
Atlanta, Illinois 61723  
(Logan County)

The Illinois Environmental Protection Agency (IEPA) has made a tentative determination to issue a NPDES Permit to discharge into the waters of the state and has prepared a draft Permit and associated fact sheet for the above named Permittee. The Public Notice period will begin and end on the dates indicated in the heading of this Public Notice/Fact Sheet. All comments on the draft Permit and requests for hearing must be received by the IEPA by U.S. Mail, carrier mail or hand delivered by the Public Notice Ending Date. Interested persons are invited to submit written comments on the draft Permit to the IEPA at the above address. Commentors shall provide his or her name and address and the nature of the issues proposed to be raised and the evidence proposed to be presented with regards to those issues. Commentors may include a request for public hearing. Persons submitting comments and/or requests for public hearing shall also send a copy of such comments or requests to the Permit applicant. The NPDES Permit and notice numbers must appear on each comment page.

The application, engineer's review notes including load limit calculations, Public Notice/Fact Sheet, draft Permit, comments received, and other documents are available for inspection and may be copied at the IEPA between 9:30 a.m. and 3:30 p.m. Monday through Friday when scheduled by the interested person.

If written comments or requests indicate a significant degree of public interest in the draft Permit, the permitting authority may, at its discretion, hold a public hearing. Public notice will be given 45 days before any public hearing. Response to comments will be provided when the final Permit is issued. For further information, please call Todd Lamm at 217/782-0610.

The following water quality and effluent standards and limitations were applied to the discharge:

Title 35: Environmental Protection, Subtitle C: Water Pollution, Chapter I: Pollution Control Board and the Clean Water Act were applied in determining the applicable standards, limitations and conditions contained in the draft Permit.

The applicant is engaged in treating domestic wastewater for the City of Atlanta.

The length of the Permit is approximately 5 years.

The main discharge number is 001. The seven day once in ten year low flow (7Q10) of the receiving stream, unnamed tributary to Clear Creek is 0 cfs.

The design average flow (DAF) for the facility is 0.1915 million gallons per day (MGD) and the design maximum flow (DMF) for the facility is 0.691 MGD. Treatment consists of stabilization ponds, rapid sand filtration, disinfection (chlorine), dechlorination, and discharge to surface water.

This reissued Permit does not increase the facility's DAF, DMF, concentration limits, and/or load limits.

This Permit recognizes and continues the year-round disinfection exemption approved by the IEPA on June 13, 1989 and included in past NPDES permit actions since that date. It is the IEPA's tentative decision that under Illinois Pollution Control Board regulations, the following reach of waterbody is not classified for primary contact use activities and is not subject to the fecal coliform water quality standard of 35 Ill. Adm. Code 302.209.

This draft permit does not contain requirements for disinfection of the discharge from discharge numbers(s) 001. The unnamed tributary to Clear Creek commencing in Section 16, T21N, R1W to confluence with Clear Creek has been determined to be unsuited to support primary contact activities (swimming) due to physical, hydrologic or geographic configuration. Anyone knowing of primary contact activities occurring within this water segment is invited to submit comments to the IEPA. Comments should give the nature of the activities (i.e swimming, fishing, canoeing, etc.), the location and months of the year when these activities have been observed. The IEPA is also interested in obtaining information on the proximity of residential dwellings and the accessibility of the public to this water segment. Anyone with such information is asked to submit comments to the IEPA on this draft permit action. Instructions for submitting comments are contained earlier in this document.

Application is made for the existing discharge which is located in Logan County, Illinois. The following information identifies the discharge point, receiving stream and stream classifications:

<u>Discharge Number</u>	<u>Receiving Stream</u>	<u>Latitude</u>	<u>Longitude</u>	<u>Stream Classification</u>	<u>Integrity Rating</u>
001	Unnamed Tributary to Clear Creek	40° 16' 13" North	89° 13' 22" West	General Use	Not Rated

To assist you further in identifying the location of the discharge(s) please see the attached map.

The stream segment, no segment designation, receiving the discharge from outfall 001 is not on the Draft 2010 303(d) list of impaired waters.

The discharge(s) from the facility is (are) proposed to be monitored and limited at all times as follows:

Discharge Number(s) and Name(s): STP Outfall 001 (Main Outfall)

Load limits computed based on a design average flow (DAF) of 0.1915 MGD (design maximum flow (DMF) of 0.691 MGD).

The effluent of the above discharge(s) shall be monitored and limited at all times as follows:

Parameter	LOAD LIMITS lbs/day DAF (DMF)*			CONCENTRATION LIMITS mg/L			Regulation
	Monthly Average	Weekly Average	Daily Maximum	Monthly Average	Weekly Average	Daily Maximum	
CBOD <sub>5</sub>	40 (144)	64 (231)		25	40		35 IAC 304.120 40 CFR 133.102
Suspended Solids	59 (213)	72 (259)		37	45		35 IAC 304.120 40 CFR 133.102
pH	Shall be in the range of 6 to 9 Standard Units						35 IAC 304.125
Fecal Coliform	Monitor Only (May through October)						35 IAC 304.121
Chlorine Residual						0.05	35 IAC 302.208
				Monthly Avg. not less than	Weekly Avg. not less than	Daily Minimum	
Dissolved Oxygen March-July				NA	6.0	5.0	35 IAC 302.206
August-February				5.5	4.0	3.5	

\*Load Limits are calculated by using the formula:  $8.34 \times (\text{Design Average and/or Maximum Flow in MGD}) \times (\text{Applicable Concentration in mg/L})$ .

Discharge Number(s) and Name(s): STP Outfall 002 (Outfall to Golf Course Irrigation Pond)

Load limits computed based on a design average flow (DAF) of 0.1915 MGD (design maximum flow (DMF) of 0.691 MGD).

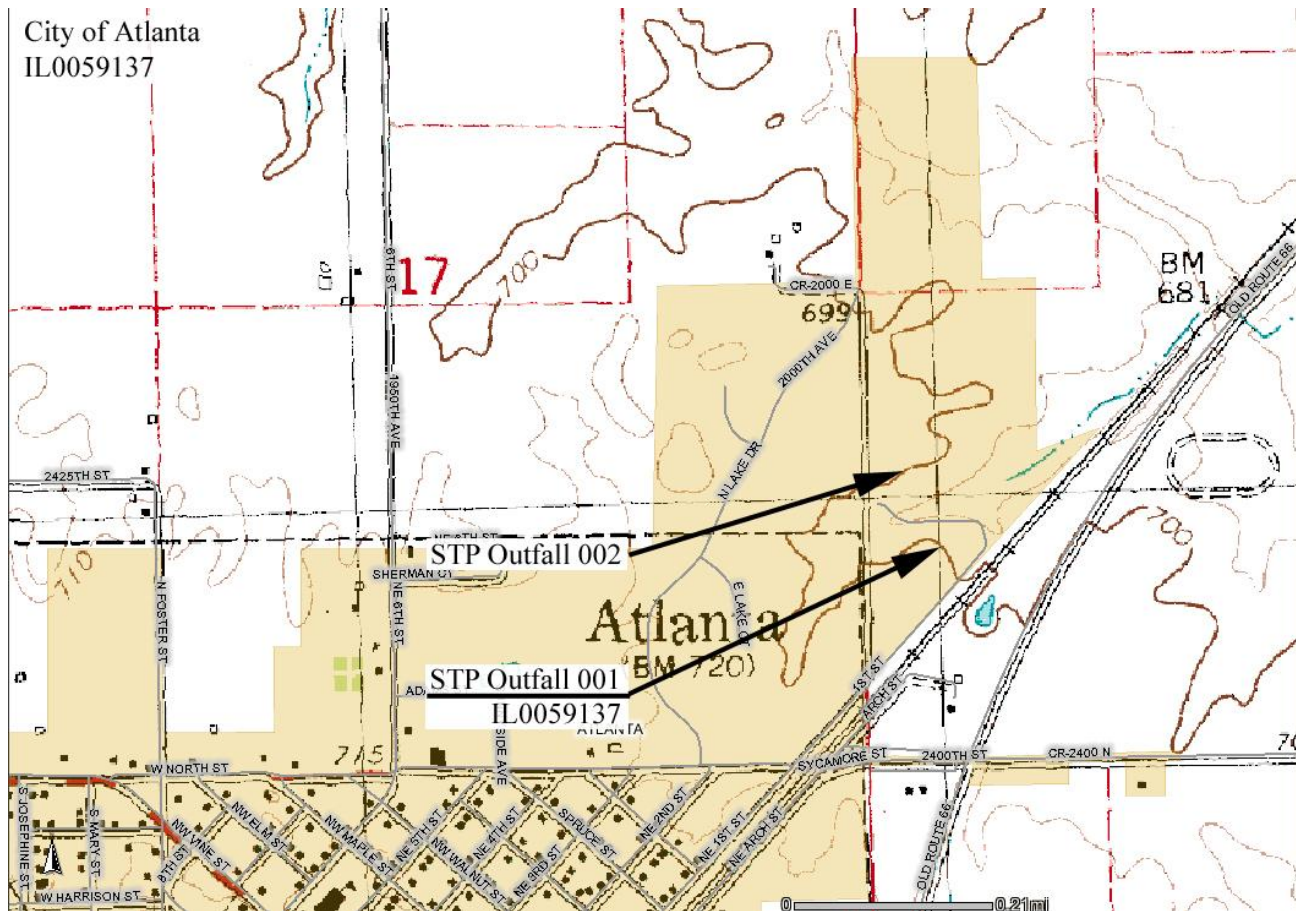
The effluent of the above discharge(s) shall be monitored and limited at all times as follows:

Parameter	LOAD LIMITS lbs/day DAF (DMF)*			CONCENTRATION LIMITS mg/L			Regulation
	Monthly Average	Weekly Average	Daily Maximum	Monthly Average	Weekly Average	Daily Maximum	
CBOD <sub>5</sub>	40 (144)	64 (231)		25	40		35 IAC 304.120 40 CFR 133.102
Suspended Solids	59 (213)	72 (259)		37	45		35 IAC 304.120 40 CFR 133.102
pH	Shall be in the range of 6 to 9 Standard Units						35 IAC 304.125
Fecal Coliform	Daily Maximum shall not exceed 400 per 100 mL						35 IAC 304.121
Chlorine Residual						0.75	35 IAC 302.208
				Monthly Avg. not less than	Weekly Avg. not less than	Daily Minimum	
Dissolved Oxygen March-July				NA	6.0	5.0	35 IAC 302.206
August-February				5.5	4.0	3.5	

\*Load Limits are calculated by using the formula:  $8.34 \times (\text{Design Average and/or Maximum Flow in MGD}) \times (\text{Applicable Concentration in mg/L})$ .

This draft Permit also contains the following requirements as special conditions:

1. Reopening of this Permit to include different final effluent limitations.
2. Operation of the facility by or under the supervision of a certified operator.
3. Submission of the operational data in a specified form and at a required frequency at any time during the effective term of this Permit.
4. More frequent monitoring requirement without Public Notice in the event of operational, maintenance or other problems resulting in possible effluent deterioration.
5. Prohibition against causing or contributing to violations of water quality standards.
6. Recording the monitoring results on Discharge Monitoring Report Forms using one such form for each outfall each month and submitting the forms to IEPA each month.
7. Effluent sampling point location.
8. Provisions of 40 CFR Section 122.41 (m) & (n).
9. At minimum of 85% removal of CBOD5 and suspended solids.
10. Controlling the sources of infiltration and inflow into the sewer system.
11. Submission of annual fiscal data.
12. A requirement to monitor and a limit of 0.05 mg/L for residual chlorine when it is used.



NPDES Permit No. IL0059137

Illinois Environmental Protection Agency

Division of Water Pollution Control

1021 North Grand Avenue East

Post Office Box 19276

Springfield, Illinois 62794-9276

NATIONAL POLLUTANT DISCHARGE ELIMINATION SYSTEM

Reissued (NPDES) Permit

Expiration Date:

Issue Date:

Effective Date:

Name and Address of Permittee:

City of Atlanta  
107 N.E. First Street, P.O. Box 385  
Atlanta, Illinois 61723

Facility Name and Address:

City of Atlanta-STP  
2000 First Street  
Atlanta, Illinois 61723  
(Logan County)

Receiving Waters: Unnamed Tributary to Clear Creek

In compliance with the provisions of the Illinois Environmental Protection Act, Title 35 of the Ill. Adm. Code, Subtitle C, Chapter I, and the Clean Water Act (CWA), the above-named Permittee is hereby authorized to discharge at the above location to the above-named receiving stream in accordance with the standard conditions and attachments herein.

Permittee is not authorized to discharge after the above expiration date. In order to receive authorization to discharge beyond the expiration date, the Permittee shall submit the proper application as required by the Illinois Environmental Protection Agency (IEPA) not later than 180 days prior to the expiration date.

Alan Keller, P.E.  
Manager, Permit Section  
Division of Water Pollution Control

SAK:TTL:IL0059137-12.TTL

## NPDES Permit No. IL0059137

Effluent Limitations, Monitoring, and Reporting

## FINAL

Discharge Number(s) and Name(s): STP Outfall 001 (Main Outfall)

Load limits computed based on a design average flow (DAF) of 0.1915 MGD (design maximum flow (DMF) of 0.691 MGD).

Excess flow facilities (if applicable) shall not be utilized until the main treatment facility is receiving its maximum practical flow.

From the effective date of this Permit until the expiration date, the effluent of the above discharge(s) shall be monitored and limited at all times as follows:

Parameter	LOAD LIMITS lbs/day DAF (DMF)*			CONCENTRATION LIMITS mg/L			Sample Frequency	Sample Type
	Monthly Average	Weekly Average	Daily Maximum	Monthly Average	Weekly Average	Daily Maximum		
Flow (MGD)							Continuous	
CBOD <sub>5</sub> **	40 (144)	64 (231)		25	40		1 Day/ Month	Composite
Suspended Solids	59 (213)	72 (259)		37	45		1 Day/ Month	Composite
pH	Shall be in the range of 6 to 9 Standard Units						1 Day/ Month	Grab
Fecal Coliform	Monitor and Report (May through October)						1 Day/ Month	Grab
Chlorine Residual						0.05	***	Grab
				Monthly Average not less than	Weekly Average not less than	Daily Minimum		
Dissolved Oxygen March-July				NA	6.0	5.0	1 Day/ Month	Grab
August-February				5.5	4.0	3.5	1 Day/ Month	Grab

\*Load limits based on design maximum flow shall apply only when flow exceeds design average flow.

\*\*Carbonaceous BOD<sub>5</sub> (CBOD<sub>5</sub>) testing shall be in accordance with 40 CFR 136.

\*\*\*See Special Condition 12.

Flow shall be reported on the Discharge Monitoring Report (DMR) as monthly average and daily maximum.

Fecal Coliform shall be monitored May through October and reported on the DMR as a daily maximum value.

pH shall be reported on the DMR as minimum and maximum value.

Chlorine Residual shall be reported on DMR as daily maximum value.

Dissolved oxygen shall be reported on the DMR as a minimum value.

## NPDES Permit No. IL0059137

Effluent Limitations, Monitoring, and Reporting

## FINAL

Discharge Number(s) and Name(s): STP Outfall 002 (Outfall to Golf Course Irrigation Pond)

Load limits computed based on a design average flow (DAF) of 0.1915 MGD (design maximum flow (DMF) of 0.691 MGD).

Excess flow facilities (if applicable) shall not be utilized until the main treatment facility is receiving its maximum practical flow.

From the effective date of this Permit until the expiration date, the effluent of the above discharge(s) shall be monitored and limited at all times as follows:

Parameter	LOAD LIMITS lbs/day DAF (DMF)*			CONCENTRATION LIMITS mg/L			Sample Frequency	Sample Type
	Monthly Average	Weekly Average	Daily Maximum	Monthly Average	Weekly Average	Daily Maximum		
Flow (MGD)							Continuous	
CBOD <sub>5</sub> **	40 (144)	64 (231)		25	40		Daily when Discharging	Composite
Suspended Solids	59 (213)	72 (259)		37	45		Daily when Discharging	Composite
pH	Shall be in the range of 6 to 9 Standard Units						Daily when Discharging	Grab
Fecal Coliform	Daily Maximum shall not exceed 400 per 100 mL						Daily when Discharging	Grab
Chlorine Residual						0.75	Daily when Discharging	Grab
				Monthly Average not less than	Weekly Average not less than	Daily Minimum		
Dissolved Oxygen March-July				NA	6.0	5.0	Daily when Discharging	Grab
August-February				5.5	4.0	3.5	Daily when Discharging	Grab

\*Load limits based on design maximum flow shall apply only when flow exceeds design average flow.

\*\*Carbonaceous BOD<sub>5</sub> (CBOD<sub>5</sub>) testing shall be in accordance with 40 CFR 136.

Flow shall be reported on the Discharge Monitoring Report (DMR) as monthly average and daily maximum.

Fecal Coliform shall be reported on the DMR as a daily maximum value.

pH shall be reported on the DMR as minimum and maximum value.

Chlorine Residual shall be reported on DMR as daily maximum value.

Dissolved oxygen shall be reported on the DMR as a minimum value.



Influent Monitoring, and Reporting

The influent to the plant shall be monitored as follows:

<u>Parameter</u>	<u>Sample Frequency</u>	<u>Sample Type</u>
Flow (MGD)	Continuous	
BOD <sub>5</sub>	1 Day/ Month	Composite
Suspended Solids	1 Day/ Month	Composite

Influent samples shall be taken at a point representative of the influent.

Flow (MGD) shall be reported on the Discharge Monitoring Report (DMR) as monthly average and daily maximum.

BOD<sub>5</sub> and Suspended Solids shall be reported on the DMR as a monthly average concentration.

Special Conditions

SPECIAL CONDITION 1: This Permit may be modified to include different final effluent limitations or requirements which are consistent with applicable laws, regulations, or judicial orders. The IEPA will public notice the permit modification.

SPECIAL CONDITION 2: The use or operation of this facility shall be by or under the supervision of a Certified Class 4 operator.

SPECIAL CONDITION 3: The IEPA may request in writing submittal of operational information in a specified form and at a required frequency at any time during the effective period of this Permit.

SPECIAL CONDITION 4: The IEPA may request more frequent monitoring by permit modification pursuant to 40 CFR Section 122.63 and Without Public Notice in the event of operational, maintenance or other problems resulting in possible effluent deterioration.

SPECIAL CONDITION 5: The effluent, alone or in combination with other sources, shall not cause a violation of any applicable water quality standard outlined in 35 Ill. Adm. Code 302.

SPECIAL CONDITION 6: The Permittee shall record monitoring results on Discharge Monitoring Report (DMR) Forms using one such form for each outfall each month.

In the event that an outfall does not discharge during a monthly reporting period, the DMR Form shall be submitted with no discharge indicated.

The Permittee may choose to submit electronic DMRs (eDMRs) instead of mailing paper DMRs to the IEPA. More information, including registration information for the eDMR program, can be obtained on the IEPA website, <http://www.epa.state.il.us/water/edmr/index.html>.

The completed Discharge Monitoring Report forms shall be submitted to IEPA no later than the 25th day of the following month, unless otherwise specified by the permitting authority.

Permittees not using eDMRs shall mail Discharge Monitoring Reports with an original signature to the IEPA at the following address:

Illinois Environmental Protection Agency  
Division of Water Pollution Control  
Attention: Compliance Assurance Section, Mail Code # 19  
1021 North Grand Avenue East  
Post Office Box 19276  
Springfield, Illinois 62794-9276

SPECIAL CONDITION 7: Samples taken in compliance with the effluent monitoring requirements shall be taken at a point representative of the discharge, but prior to entry into the receiving stream.

SPECIAL CONDITION 8: The provisions of 40 CFR Section 122.41(m) & (n) are applicable and are hereby incorporated by reference.

SPECIAL CONDITION 9: Final Conditions - For Discharge No. 001 BOD5 and Suspended Solids (85% removal required): The arithmetic mean of the values for effluent samples collected in a period of one calendar month shall not exceed 15 percent of the arithmetic mean of the values for influent samples collected at approximately the same time during the same period, except during those periods when the influent is diluted because of high flows if the tributary sewer system is combined. The percent removal need not be reported to the IEPA on DMR's but influent and effluent data must be available, as required elsewhere in this Permit, for IEPA inspection and review. For measuring compliance with this requirement, 5 mg/L shall be added to the effluent CBOD5 concentration to determine the effluent BOD5 concentration.

SPECIAL CONDITION 10: This Permit may be modified to include requirements for the Permittee on a continuing basis to evaluate and detail its efforts to effectively control sources of infiltration and inflow into the sewer system and to submit reports to the IEPA if necessary.

SPECIAL CONDITION 11: During January of each year the Permittee shall submit annual fiscal data regarding sewerage system operations to the Illinois Environmental Protection Agency/Division of Water Pollution Control/Compliance Assurance Section. The Permittee may use any fiscal year period provided the period ends within twelve (12) months of the submission date.

Submission shall be on forms provided by IEPA titled "Fiscal Report Form For NPDES Permittees".

SPECIAL CONDITION 12: For Discharge No. 001, any use of chlorine to control slime growths, odors or as an operational control, etc. shall not exceed the limit of 0.05 mg/L (daily maximum) total residual chlorine in the effluent. Sampling is required on a daily grab basis during the chlorination process. Reporting shall be submitted on the DMR's on a monthly basis.