

NPDES Permit No. IL0031551

Notice No. BDF:10121701.ajo

Public Notice Beginning Date: **July 13, 2011**

Public Notice Ending Date: **August 12, 2011**

National Pollutant Discharge Elimination System (NPDES)
Permit Program

PUBLIC NOTICE/FACT SHEET
of
Draft Modified NPDES Permit to Discharge into Waters of the State

Public Notice/Fact Sheet Issued By:

Illinois EPA
Division of Water Pollution Control
Permit Section
1021 North Grand Avenue East
Post Office Box 19276
Springfield, Illinois 62794-9276
217/782-0610

Name and Address of Discharger:

Illinois American Water Company
1000 Internationale Parkway
Woodridge, IL 60517

Name and Address of Facility:

Illinois-American Water Company-Valley Marina WRF
W/S Route 31/S Anchor
Oswego, IL 60543
(Kendall County)

The Illinois Environmental Protection Agency (IEPA) has made a tentative determination to issue a NPDES Permit to discharge into the waters of the state and has prepared a draft Permit and associated fact sheet for the above named discharger. The Public Notice period will begin and end on the dates indicated in the heading of this Public Notice/Fact Sheet. All comments on the draft Permit and requests for hearing must be received by the IEPA by U.S. Mail, carrier mail or hand delivered by the Public Notice Ending Date. Interested persons are invited to submit written comments on the draft Permit to the IEPA at the above address. Commentors shall provide his or her name and address and the nature of the issues proposed to be raised and the evidence proposed to be presented with regards to those issues. Commentors may include a request for public hearing. Persons submitting comments and/or requests for public hearing shall also send a copy of such comments or requests to the Permit applicant. The NPDES Permit and notice numbers must appear on each comment page.

The application, engineer's review notes including load limit calculations, Public Notice/Fact Sheet, draft Permit, comments received, and other documents are available for inspection and may be copied at the IEPA between 9:30 a.m. and 3:30 p.m. Monday through Friday when scheduled by the interested person.

If written comments or requests indicate a significant degree of public interest in the draft Permit, the permitting authority may, at its discretion, hold a public hearing. Public notice will be given 45 days before any public hearing. Response to comments will be provided when the final Permit is issued. For further information, please call Brant Fleming at 217/782-0610.

The following water quality and effluent standards and limitations were applied to the discharge:

Title 35: Environmental Protection, Subtitle C: Water Pollution, Chapter I: Pollution Control Board and the Clean Water Act were applied in determining the applicable standards, limitations and conditions contained in the draft Permit.

The applicant is engaged in treating domestic wastewater for the Valley Marina Subdivision.

The length of the Permit is approximately 5 years.

The main discharge number is 001. The seven day once in ten year low flow (7Q10) of the receiving stream, Fox River is 180.5 cfs.

The design average flow (DAF) for the existing facility is 0.25 million gallons per day (MGD) and the design maximum flow (DMF) is 0.625 MGD. Treatment consists of screening, activated sludge, sedimentation (settling), disinfection, aerobic digestion, sludge drying beds and land application.

The design average flow (DAF) for the proposed facility is 0.42 million gallons per day (MGD) and the design maximum flow (DMF) is 1.35 MGD. Treatment consists of screening, oxidation ditch, final clarifiers, U.V. Disinfection and aerobic digestion.

This modified Permit increases the facility's DAF, DMF, concentration limits, and/or load limits.

Pursuant to the waiver provisions authorized by 40 CFR § 123.24, this draft permit is within the class, type, and size for which the Regional Administrator, Region V, has waived his right to review, object, or comment on this draft permit action.

The IEPA will accept comments on the following draft modifications to the Permit:

The design average flow increased from 0.25 MGD to 0.42 MGD and the design maximum flow increased from 0.625 MGD to 1.35 MGD. Load limits did not increase. The permit also includes a compliance schedule for dissolved oxygen and revised dates for the ammonia nitrogen compliance schedule.

Application is made for the existing discharge(s) which are located in Kendall County, Illinois. The following information identifies the discharge point, receiving stream and stream classifications:

Discharge Number	Receiving Stream	Latitude	Longitude	Stream Classification	Integrity Rating
001	Fox River	41° 42' 22" North	88° 21' 05" West	General Use	C

To assist you further in identifying the location of the discharge(s) please see the attached map.

The stream segment(s) DT-38 receiving the discharge from outfall(s) 001 are on the draft 2010 303(d) list of impaired waters.

The following parameters have been identified as the pollutants causing impairment:

Potential Causes	Uses Impaired
Alteration in stream-side vegetative cover (non-pollutant), aquatic algae (non-pollutant) other flow regime alterations (non-pollutant), ph, total phosphorus, total suspended solids, chloride, mercury, PCBS and fecal coliform bacteria	Aquatic life, fish consumption, primary contact and public water supply use

The discharge(s) from the facility is proposed to be monitored and limited at all times as follows:

Discharge Number(s) and Name(s): 001 STP Outfall (existing)

Load limits computed based on a design average flow (DAF) of 0.25 MGD (design maximum flow (DMF) of 0.625 MGD).

From the modification date until attainment of operational level of the plant expansion the effluent of the above discharge(s) shall be monitored and limited at all times as follows:

Parameter	LOAD LIMITS lbs/day DAF (DMF)*			CONCENTRATION LIMITS mg/L			Regulation
	Monthly Average	Weekly Average	Daily Maximum	Monthly Average	Weekly Average	Daily Maximum	
CBOD ₅	52 (130)	83 (209)		25	40		35 IAC 304.120 40 CFR 133.102
Suspended Solids	63 (156)	94 (235)		30	45		35 IAC 304.120 40 CFR 133.102
pH	Shall be in the range of 6 to 9 Standard Units						35 IAC 304.125
Fecal Coliform	Daily Maximum shall not exceed 400 per 100 mL (May through October)						35 IAC 304.121
Chlorine Residual				0.35			35 IAC 302.208
Ammonia Nitrogen: March-May/Sept.-Oct.			30 (75)			14.3	35 IAC 355 and
June-August			29 (74)			14.1	35 IAC 302
Nov.-Feb.			31 (78)			14.9	

Phosphorus	Monitor Only						35 IAC 309.146
				Monthly Avg. not less than	Weekly Avg. not less than	Daily Minimum	
Dissolved Oxygen March-July					6.25	5.0	35 IAC 302.206
August-February				6.0	4.5	4.0	

*Load Limits are calculated by using the formula: $8.34 \times (\text{Design Average and/or Maximum Flow in MGD}) \times (\text{Applicable Concentration in mg/L})$.

The discharge(s) from the facility is proposed to be monitored and limited at all times as follows:

Discharge Number(s) and Name(s): 001 STP Outfall (proposed)

Load limits computed based on a design average flow (DAF) of 0.42 MGD (design maximum flow (DMF) of 1.35 MGD).

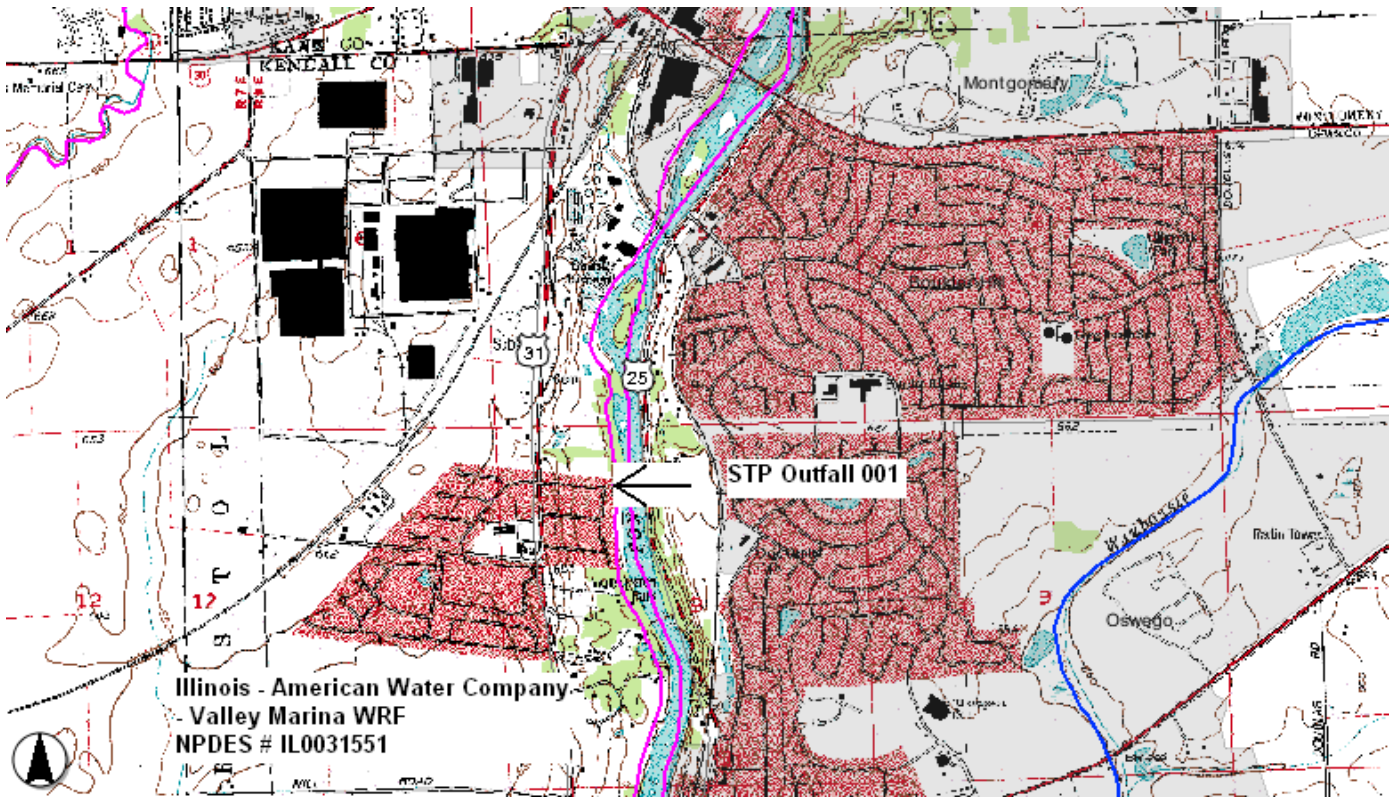
From attainment of operational level of the plant expansion until the expiration date the effluent of the above discharge(s) shall be monitored and limited at all times as follows:

Parameter	LOAD LIMITS lbs/day DAF (DMF)*			CONCENTRATION LIMITS mg/L			Regulation
	Monthly Average	Weekly Average	Daily Maximum	Monthly Average	Weekly Average	Daily Maximum	
CBOD ₅	88 (281)	140 (450)		25	40		35 IAC 304.120 40 CFR 133.102
Suspended Solids	105 (338)	158 (507)		30	45		35 IAC 304.120 40 CFR 133.102
pH	Shall be in the range of 6 to 9 Standard Units						35 IAC 304.125
Fecal Coliform	Daily Maximum shall not exceed 400 per 100 mL (May through October)						35 IAC 304.121
Chlorine Residual						0.05	35 IAC 302.208
Ammonia Nitrogen: March-May/Sept.-Oct.	5.3 (17)		6.3 (20)	1.5		1.8	35 IAC 355 and
June-August			4.9 (16)			1.4	35 IAC 302
Nov.-Feb.			12 (38)			3.4	
Total Phosphorus	3.5 (11)			1.0			35 IAC 309.146
Total Nitrogen	Monitor Only						35 IAC 309.146
				Monthly Avg. not less than	Weekly Avg. not less than	Daily Minimum	
Dissolved Oxygen March-July					6.25	5.0	35 IAC 302.206
August-February				6.0	4.5	4.0	

*Load Limits are calculated by using the formula: $8.34 \times (\text{Existing Design Average and/or Maximum Flow in MGD}) \times (\text{Applicable Concentration in mg/L})$.

This draft Permit also contains the following requirements as special conditions:

1. Reopening of this Permit to include different final effluent limitations.
2. Operation of the facility by or under the supervision of a certified operator.
3. Submission of the operational data in a specified form and at a required frequency at any time during the effective term of this Permit.
4. More frequent monitoring requirement without Public Notice in the event of operational, maintenance or other problems resulting in possible effluent deterioration.
5. Prohibition against causing or contributing to violations of water quality standards.
6. Effluent sampling point location.
7. At minimum of 85% removal of CBOD₅ and suspended solids.
8. Burden reduction.
9. Establishing the ZID and mixing zone.
10. Compliance schedule for ammonia water quality standards.
11. Compliance schedule for dissolved oxygen water quality standards.
12. Submission of semi annual reports indicating the quantities of sludge generated and disposed.
13. Reopening of this Permit to include revised effluent limitations based on a Total Maximum Daily Load (TMDL) or other water quality study.
14. Recording the monitoring results on Discharge Monitoring Report Forms using one such form for each outfall each month and submitting the forms to IEPA each month.
15. Provisions of 40 CFR Section 122.31 (m) & (n).
16. Total Nitrogen Monitoring.
17. Notify agency of plant completion.
18. Seasonal fecal coliform requirements.
19. A requirement to monitor and a limit of 0.05 mg/L for residual chlorine when it is used.
20. Loading annual average limit.
21. Increase loading to receiving stream.



NPDES Permit No. IL0031551

Illinois Environmental Protection Agency

Division of Water Pollution Control

1021 North Grand Avenue East

Post Office Box 19276

Springfield, Illinois 62794-9276

NATIONAL POLLUTANT DISCHARGE ELIMINATION SYSTEM

Modified (NPDES) Permit

Expiration Date: December 31, 2014

Issue Date: December 23, 2009

Effective Date: January 1, 2010

Modification Date:

Name and Address of Permittee:

Illinois American Water Company
1000 Internationale Parkway
Woodridge, IL 60517

Facility Name and Address:

Illinois-American Water Company-Valley Marina WRF
W/S Route 31/S Anchor
Oswego, IL 60543
(Kendall County)

Receiving Waters: Fox River

In compliance with the provisions of the Illinois Environmental Protection Act, Title 35 of the Ill. Adm. Code, Subtitle C, Chapter I, and the Clean Water Act (CWA), the above-named Permittee is hereby authorized to discharge at the above location to the above-named receiving stream in accordance with the standard conditions and attachments herein.

Permittee is not authorized to discharge after the above expiration date. In order to receive authorization to discharge beyond the expiration date, the Permittee shall submit the proper application as required by the Illinois Environmental Protection Agency (IEPA) not later than 180 days prior to the expiration date.

Alan Keller, P.E.
Manager, Permit Section
Division of Water Pollution Control

SAK:BDF:10121701.ajo

NPDES Permit No. IL0031551

Effluent Limitations, Monitoring, and Reporting

FINAL

Discharge Number(s) and Name(s): 001 STP Outfall (existing)

Load limits computed based on a design average flow (DAF) of 0.25 MGD (design maximum flow (DMF) of 0.625 (MGD).

Excess flow facilities (if applicable) shall not be utilized until the main treatment facility is receiving its maximum practical flow.

From the modified date of this Permit until attainment of operation level of the plant expansion, the effluent of the above discharge(s) shall be monitored and limited at all times as follows:

Parameter	LOAD LIMITS lbs/day DAF (DMF)*			CONCENTRATION LIMITS mg/L			Sample Frequency	Sample Type
	Monthly Average	Weekly Average	Daily Maximum	Monthly Average	Weekly Average	Daily Maximum		
Flow (MGD)							Continuous	
CBOD ₅ **	52 (130)	83 (209)		25	40		2 Days/Month	Composite
Suspended Solids	63 (156)	94 (235)		30	45		2 Days/Month	Composite
pH	Shall be in the range of 6 to 9 Standard Units						2 Days/Month	Grab
Fecal Coliform*****	Daily Maximum shall not exceed 400 per 100 mL (May through October)						1 Day/Week	Grab
Chlorine Residual*****				0.35			1 Day/Week	Grab
Ammonia Nitrogen:*** As (N) March-May/Sept.-Oct.			30 (75)			14.3	2 Days/Month	Composite
June-August			29 (74)			14.1	2 Days/Month	Composite
Nov.-Feb.			31 (78)			14.9	2 Days/Month	Composite
Phosphorus	Monitor Only						1 Day/Month	Composite
				Monthly Average not less than	Weekly Average not less than	Daily Minimum		
Dissolved Oxygen**** March-July					6.25	5.0	2 Days/Month	Grab
August-February				6.0	4.5	4.0	2 Days/Month	Grab

*Load limits based on design maximum flow shall apply only when flow exceeds design average flow.

**Carbonaceous BOD₅ (CBOD₅) testing shall be in accordance with 40 CFR 136.

***See Special Condition 10.

****See Special Condition 11.

*****See Special Condition 18.

Flow shall be reported on the Discharge Monitoring Report (DMR) as monthly average and daily maximum.

Fecal Coliform shall be reported on the DMR as a daily maximum value.

pH shall be reported on the DMR as minimum and maximum value.

Chlorine Residual shall be reported on DMR as daily maximum value.

Dissolved oxygen shall be reported on the DMR as a minimum value.

Total phosphorus shall be reported on the DMR as a daily maximum and monthly average.

NPDES Permit No. IL0031551

Effluent Limitations, Monitoring, and Reporting

The discharge(s) from the facility is proposed to be monitored and limited at all times as follows:

Discharge Number(s) and Name(s): 001 STP Outfall (proposed)

Load limits computed based on a design average flow (DAF) of 0.42 MGD (design maximum flow (DMF) of 1.35 MGD).

From attainment of the operation level of the plant expansion until the expiration date the effluent of the above discharge(s) shall be monitored and limited at all times as follows:

Parameter	LOAD LIMITS lbs/day DAF (DMF)*			CONCENTRATION LIMITS mg/L			Sample Frequency	Sample Type
	Monthly Average	Weekly Average	Daily Maximum	Monthly Average	Weekly Average	Daily Maximum		
Flow (MGD)							Continuous	
CBOD ₅ *******	88 (281)	140 (450)		25	40		1 Day/Week	Composite
Suspended Solids****	105 (338)	158 (507)		30	45		1 Day/Week	Composite
pH	Shall be in the range of 6 to 9 Standard Units						1 Day/Week	Grab
Fecal Coliform	Daily Maximum shall not exceed 400 per 100 mL (May through October)						1 Day/Week	Grab
Chlorine Residual						0.05	***	Grab
Ammonia Nitrogen: As (N) March-May/Sept.-Oct.	5.3 (17)		6.3 (20)	1.5		1.8	1 Day/Week	Composite
June-August			4.9 (16)			1.4	1 Day/Week	Composite
Nov.-Feb.			12 (38)			3.4	1 Day/Week	Composite
Total Phosphorus	3.5 (11)			1.0			1 Day/Week	Composite
Total Nitrogen	Monitor Only						1 Day/Month	Composite
				Monthly Average not less than	Weekly Average not less than	Daily Minimum		
Dissolved Oxygen March-July					6.25	5.0	1 Day/Week	Grab
August-February				6.0	4.5	4.0	1 Day/Week	Grab

*Load limits based on design maximum flow shall apply only when flow exceeds design average flow.

**Carbonaceous BOD₅ (CBOD₅) testing shall be in accordance with 40 CFR 136.

***See Special Condition 19.

****See Special Condition 20 and 21.

Flow shall be reported on the Discharge Monitoring Report (DMR) as monthly average and daily maximum.

Fecal Coliform shall be reported on the DMR as a daily maximum value.

pH shall be reported on the DMR as minimum and maximum value.

Chlorine Residual shall be reported on DMR as daily maximum value.

Dissolved oxygen shall be reported on the DMR as a minimum value.

Total phosphorus and total nitrogen shall be reported on the DMR as a daily maximum and monthly average.

NPDES Permit No. IL0031551

Influent Monitoring, and Reporting

The influent to the plant shall be monitored as follows:

<u>Parameter</u>	<u>Sample Frequency**</u>	<u>Sample Type</u>
Flow (MGD)	Continuous	
BOD ₅	2 Days/Month	Composite
Suspended Solids	2 Days/Month	Composite

Influent samples shall be taken at a point representative of the influent.

**Once the expanded STP becomes operational, influent monitoring shall be performed 1 Day/Week.

Flow (MGD) shall be reported on the Discharge Monitoring Report (DMR) as monthly average and daily maximum.

BOD₅ and Suspended Solids shall be reported on the DMR as a monthly average concentration.

Influent samples shall be taken at a point representative of the influent.

Special Conditions

SPECIAL CONDITION 1. This Permit may be modified to include different final effluent limitations or requirements which are consistent with applicable laws, regulations, or judicial orders. The IEPA will public notice the permit modification.

SPECIAL CONDITION 2. The use or operation of this facility shall be by or under the supervision of a Certified Class 2 operator.

SPECIAL CONDITION 3. The IEPA may request in writing submittal of operational information in a specified form and at a required frequency at any time during the effective period of this Permit.

SPECIAL CONDITION 4. The IEPA may request more frequent monitoring by permit modification pursuant to 40 CFR Section 122.63 and Without Public Notice in the event of operational, maintenance or other problems resulting in possible effluent deterioration.

SPECIAL CONDITION 5. The effluent, alone or in combination with other sources, shall not cause a violation of any applicable water quality standard outlined in 35 Ill. Adm. Code 302.

SPECIAL CONDITION 6. Samples taken in compliance with the effluent monitoring requirements shall be taken at a point representative of the discharge, but prior to entry into the receiving stream.

SPECIAL CONDITION 7. Final Conditions - For Discharge No. 001 BOD₅ and Suspended Solids (85% removal required): The arithmetic mean of the values for effluent samples collected in a period of one calendar month shall not exceed 15 percent of the arithmetic mean of the values for influent samples collected at approximately the same time during the same period, except during those periods when the influent is diluted because of high flows if the tributary sewer system is combined. The percent removal need not be reported to the IEPA on DMR's but influent and effluent data must be available, as required elsewhere in this Permit, for IEPA inspection and review. For measuring compliance with this requirement, 5 mg/L shall be added to the effluent CBOD₅ concentration to determine the effluent BOD₅ concentration.

SPECIAL CONDITION 8. The Permittee has undergone a Monitoring Reduction review and the influent and effluent sample frequency has been reduced for BOD₅, CBOD₅, Suspended Solids pH and DO due to sustained compliance for the existing treatment plant. The IEPA will require that the influent and effluent sampling frequency for these parameters be increased to 2 Days/Week if effluent deterioration occurs due to increased wasteload, operational, maintenance or other problems. The increased monitoring will be required Without Public Notice when a permit modification is received by the Permittee from the IEPA.

SPECIAL CONDITION 9. For the existing treatment plant a zone of initial dilution and mixing zone for ammonia has been recognized. A zone of initial dilution (ZID) for ammonia is recognized with dimensions of 3.3 feet width from the end-of-pipe and 3.3 feet downstream from this point. Within the ZID, 3.7:1 dilution is afforded. A mixing zone is recognized for ammonia with dimensions of 13.8 feet width from the end-of-pipe and 13.8 feet downstream from this point. Within the mixing zone 15.6:1 dilution is afforded.

SPECIAL CONDITION 10.

Project Description: Compliance with Ammonia Nitrogen Water Quality Standards

The following ammonia nitrogen (as N) limits shall become effective December 31, 2013.

	Load Limits lbs/day DAF (DMF)*		Concentration Limits mg/L	
	Monthly Avg.	Daily Max.	Monthly Avg.	Daily Max.
March-May/Sept.-Oct.		18 (44)		8.5
June-August		13 (31)		6.0
Nov.-Feb.		31 (78)		14.9

*Load limits based on design maximum flow shall apply only when flow exceeds the design average flow.

The Permittee shall complete the ammonia nitrogen (as N) compliance in accordance with the following schedule:

- | | | |
|-----|---------------------------------|--------------|
| (1) | Submit plans and Specifications | June 2011 |
| (2) | Commence Construction | January 2012 |

Special Conditions

- (3) Permittee Achieves Compliance with Final Ammonia Nitrogen Effluent Limitations December 2013
- (4) Semi-annual interim report on status of compliance Every 6 months from the modification date of this permit

This Permit may be modified, with Public Notice, to include revised compliance dates set out in this Permit that are superseded or supplemented by compliance dates in judicial orders, Pollution Control Board orders or grant agreements. Prior to such permit modification, the revised dates in the appropriate orders or grant agreements shall govern the Permittee's compliance.

In addition, the IEPA may initiate a modification of the construction schedule set forth in this Permit at any time, to include other dates which are necessary to carry out the provisions of the Illinois Environmental Protection Act, the Federal Clean Water Act or regulations promulgated under those Acts or compliance dates which have been submitted in writing by the Permittee and approved by the IEPA. Public Notice of such modifications and opportunity for public hearing shall be provided consistent with 40 CFR Section 122.63.

REPORTING

The Permittee shall submit a report no later than fourteen (14) days following the completion dates indicated for each numbered item in the compliance schedule, indicating, a) the date the item was completed, or b) that the item was not completed. All reports shall be submitted to IEPA at the following address:

Illinois Environmental Protection Agency
Division of Water Pollution Control
1021 North Grand Avenue East
Post Office box 19276
Springfield, Illinois 62794-9276

Attention: Compliance Assurance Section, Mail Code # 19

SPECIAL CONDITION 11.

Project Description: Compliance with Dissolved Oxygen Water Quality Standards

The following Dissolved Oxygen limits shall become effective 6 months from the modification date of this permit.

	Monthly Average not less than	Weekly Average not less than	Daily Minimum
Dissolved Oxygen			
March - July	--	6.25	5.0
August - February	6.0	4.5	4.0

This Permit may be modified, with Public Notice, to include revised compliance dates set out in this Permit that are superseded or supplemented by compliance dates in judicial orders, Pollution Control Board orders or grant agreements. Prior to such permit modification, the revised dates in the appropriate orders or grant agreements shall govern the Permittee's compliance.

In addition, the IEPA may initiate a modification of the construction schedule set forth in this Permit at any time, to include other dates which are necessary to carry out the provisions of the Illinois Environmental Protection Act, the Federal Clean Water Act or regulations promulgated under those Acts or compliance dates which have been submitted in writing by the Permittee and approved by the IEPA. Public Notice of such modifications and opportunity for public hearing shall be provided consistent with 40 CFR Section 122.63.

REPORTING

The Permittee shall submit a report no later than fourteen (14) days following the completion dates indicated for each numbered item in the compliance schedule, indicating, a) the date the item was completed, or b) that the item was not completed. All reports shall be submitted to IEPA at the following address:

NPDES Permit No. IL0031551

Special Conditions

Illinois Environmental Protection Agency
Division of Water Pollution Control
1021 North Grand Avenue East
Post Office box 19276
Springfield, Illinois 62794-9276

Attention: Compliance Assurance Section, Mail Code # 19

SPECIAL CONDITION 12. For the duration of this Permit, the Permittee shall determine the quantity of sludge produced by the treatment facility in dry tons or gallons with average percent total solids analysis. The Permittee shall maintain adequate records of the quantities of sludge produced and have said records available for IEPA inspection. The Permittee shall submit to the IEPA, at a minimum, a semi-annual summary report of the quantities of sludge generated and disposed of, in units of dry tons or gallons (average total percent solids) by different disposal methods including but not limited to application on farmland, application on reclamation land, landfilling, public distribution, dedicated land disposal, sod farms, storage lagoons or any other specified disposal method. Said reports shall be submitted to the IEPA by January 31 and July 31 of each year reporting the preceding January thru June and July thru December interval of sludge disposal operations.

Duty to Mitigate. The Permittee shall take all reasonable steps to minimize any sludge use or disposal in violation of this Permit.

Sludge monitoring must be conducted according to test procedures approved under 40 CFR 136 unless otherwise specified in 40 CFR 503, unless other test procedures have been specified in this Permit.

Planned Changes. The Permittee shall give notice to the IEPA on the semi-annual report of any changes in sludge use and disposal.

The Permittee shall retain records of all sludge monitoring, and reports required by the Sludge Permit as referenced in Standard Condition 23 for a period of at least five (5) years from the date of this Permit.

If the Permittee monitors any pollutant more frequently than required by the Sludge Permit, the results of this monitoring shall be included in the reporting of data submitted to the IEPA.

Monitoring reports for sludge shall be reported on the form titled "Sludge Management Reports" to the following address:

Illinois Environmental Protection Agency
Bureau of Water
Compliance Assurance Section
Mail Code #19
1021 North Grand Avenue East
Post Office Box 19276
Springfield, Illinois 62794-9276

SPECIAL CONDITION 13. This Permit may be modified to include alternative or additional final effluent limitations pursuant to an approved Total Maximum Daily Load (TMDL) Study or upon completion of an alternate Water Quality Study.

SPECIAL CONDITION 14. The Permittee shall record monitoring results on Discharge Monitoring Report (DMR) Forms using one such form for each outfall each month.

In the event that an outfall does not discharge during a monthly reporting period, the DMR Form shall be submitted with no discharge indicated.

The Permittee may choose to submit electronic DMRs (eDMRs) instead of mailing paper DMRs to the IEPA. More information, including registration information for the eDMR program, can be obtained on the IEPA website, <http://www.epa.state.il.us/water/edmr/index.html>.

The completed Discharge Monitoring Report forms shall be submitted to IEPA no later than the 25th day of the following month, unless otherwise specified by the permitting authority.

Permittees not using eDMRs shall mail Discharge Monitoring Reports with an original signature to the IEPA at the following address:

Illinois Environmental Protection Agency
Division of Water Pollution Control
Attention: Compliance Assurance Section, Mail Code # 19
1021 North Grand Avenue East
Post Office Box 19276
Springfield, Illinois 62794-9276

Special Conditions

SPECIAL CONDITION 15. The provisions of 40 CFR Section 122.41(m) & (n) are applicable and are hereby incorporated by reference.

SPECIAL CONDITION 16. The Permittee shall notify the IEPA in writing of any operational deficiencies and corrective measures to be taken if the expanded treatment plant exceeds the concentration values of 8 mg/l of Total Nitrogen in the effluent. Correspondence shall be directed to:

Illinois Environmental Protection Agency
Bureau of Water
Compliance Assurance Section, Mail Code #19
1021 North Grand Avenue East
Post Office Box 19276
Springfield, Illinois 62794-9276

Illinois Environmental Protection Agency
Bureau of Water
Des Plaines Field Office
9511 West Harrison
Des Plaines, Illinois 60016

SPECIAL CONDITION 17. The Permittee shall notify the IEPA in writing once the treatment plant expansion has been completed. A letter stating the date that the expansion was completed shall be sent to the following address within fourteen (14) days of the expansion becoming operational:

Illinois Environmental Protection Agency
Bureau of Water
Compliance Assurance Section, Mail Code #19
1021 North Grand Avenue East
Post Office Box 19276
Springfield, Illinois 62794-9276

SPECIAL CONDITION 18. Fecal Coliform limits for Discharge Number 001 are effective May thru October. Sampling of Fecal Coliform is only required during this time period.

The total residual chlorine limit is applicable at all times. If the Permittee is chlorinating for any purpose during the months of November through April, sampling is required on a daily grab basis. Sampling frequency for the months of May through October shall be as indicated on effluent limitations, monitoring and reporting page of this Permit.

SPECIAL CONDITION 19. For Discharge No.001, any use of chlorine to control slime growths, odors or as an operational control, etc. shall not exceed the limit of 0.05 mg/L (daily maximum) total residual chlorine in the effluent. Sampling is required on a daily grab basis during the chlorination process. Reporting shall be submitted on the DMR's on a monthly basis.

SPECIAL CONDITION 20. The discharge from Outfall 001 (proposed) shall have an annual average load limit for BOD₅ and total suspended solids which shall become effective upon attainment of the operational level of the expanded plant and remain effective until the expiration date of this permit. The annual average load limits are as follows:

<u>Parameter</u>	<u>Annual Average Load Limit (Lbs/Day)</u>
BOD ₅	52
Total Suspended Solid	63

Annual average loading shall be reported on the DMR forms 12 months from attainment of the operational level and every 12 months thereafter.

SPECIAL CONDITION 21. The annual average load limits may be increased upon favorable results of a water quality study of the receiving stream. Prior to conducting a water quality study the permittee must submit to the Agency a plan of conducting the water quality study and receive approval from the Agency prior to initiating the study. Study results must demonstrate that the discharge is in compliance with the Anti-degradation requirements