

NPDES Permit No. IL0004375
Notice No. LRL:09020603.bah

Public Notice Beginning Date: **January 7, 2011**

Public Notice Ending Date: **February 7, 2011**

National Pollutant Discharge Elimination System (NPDES)
Permit Program

Draft Modified NPDES Permit to Discharge into Waters of the State

Public Notice/Fact Sheet Issued By:

Illinois Environmental Protection Agency
Bureau of Water,
Division of Water Pollution Control
Permit Section
1021 North Grand Avenue East
Post Office Box 19276
Springfield, Illinois 62794-9276
217/782-0610

Name and Address of Discharger:

Cabot Corporation
700 East U.S. Highway 36
Tuscola, Illinois 61953

Name and Address of Facility:

Cabot Corporation
700 East U.S. Highway 36
Tuscola, Illinois 61953
(Douglas County)

The Illinois Environmental Protection Agency (IEPA) has made a tentative determination to issue a NPDES permit to discharge into the waters of the state and has prepared a draft permit and associated fact sheet for the above named discharger. The Public Notice period will begin and end on the dates indicated in the heading of this Public Notice/Fact Sheet. The last day comments will be received will be on the Public Notice period ending date unless a commentor demonstrating the need for additional time requests an extension to this comment period and the request is granted by the IEPA. Interested persons are invited to submit written comments on the draft permit to the IEPA at the above address. Commentors shall provide his or her name and address and the nature of the issues proposed to be raised and the evidence proposed to be presented with regards to those issues. Commentors may include a request for public hearing. Persons submitting comments and/or requests for public hearing shall also send a copy of such comments or requests to the permit applicant. The NPDES permit and notice number(s) must appear on each comment page.

The application, engineer's review notes including load limit calculations, Public Notice/Fact Sheet, draft permit, comments received, and other documents are available for inspection and may be copied at the IEPA between 9:30 a.m. and 3:30 p.m. Monday through Friday when scheduled by the interested person.

If written comments or requests indicate a significant degree of public interest in the draft permit, the permitting authority may, at its discretion, hold a public hearing. Public notice will be given 45 days before any public hearing. Response to comments will be provided when the final permit is issued. For further information, please call Leslie Lowry at 217/782-0610.

The applicant is engaged in manufacturing inorganic chemicals. This facility produces fumed silicon dioxide and fumed alumina. Hydrochloric acid is produced as a byproduct of this process (SIC 2819). Plant operation results in an average discharge of 0.116 MGD of combined pump seal water, compressor condensate, discharges from internal outfall B01, non-contact cooling water, and stormwater from outfall 001 and 0.00934 MGD of treated sanitary wastewater, lab sink water, compressor condensate and floor sweeper wastewater from internal outfall B01.

The following modification is proposed:

Adding non-contact cooling water to outfall 001.

Application is made for existing discharge(s) which are located in Douglas County, Illinois. The following information identifies the discharge point, receiving stream and stream classifications:

Outfall	Receiving Stream	Latitude		Longitude		Stream Classification	Biological Stream Characterization
001	Scattering Forks Creek via Drainage District #4 Tile to Embarrass River	39° 47' 10"	North	88° 20' 07"	West	General Use	Not Rated

To assist you further in identifying the location of the discharge please see the attached map.

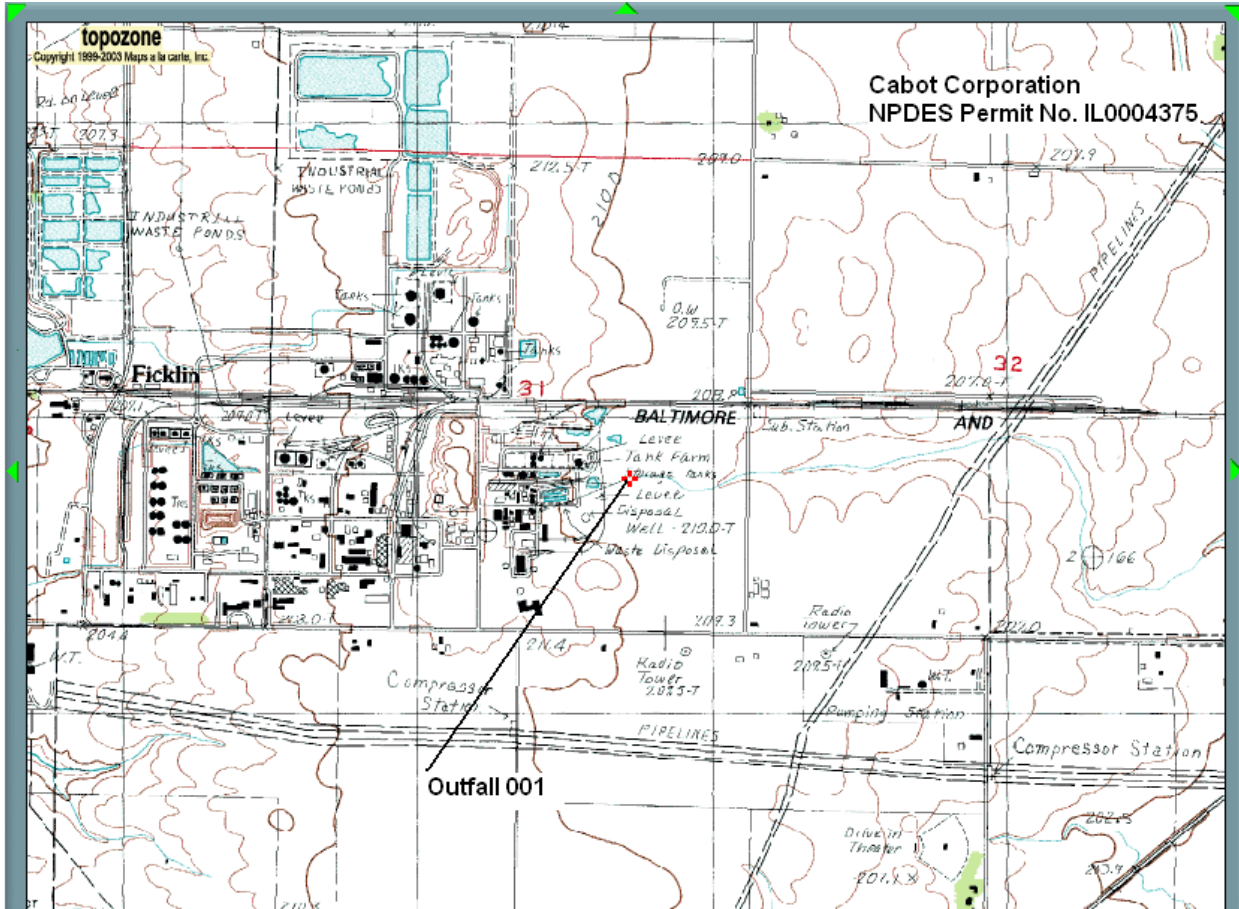
The stream segment receiving the discharge from outfall(s) 001 is not on the 303 (d) list of impaired waters.

The discharge(s) from the facility shall be monitored and limited at all times as follows:

PARAMETER	LOAD LIMITS lbs/day DAF (DMF)			CONCENTRATION LIMITS mg/l		
	30 DAY AVERAGE	DAILY MAXIMUM	REGULATION	30 DAY AVERAGE	DAILY MAXIMUM	REGULATION
<u>Outfall 001:</u>						
Flow (MGD)						
pH	Shall be within the range of 6 to 9 standard units					35 IAC 304.125
Temperature						35 IAC 302.211
Total Suspended Solids				15	30	35 IAC 304.124
Total Residual Chlorine					0.05	40 CFR 125.3
<u>Outfall B01:</u>						
Flow (MGD)						
pH	Shall be within the range of 6 to 9 standard units					35 IAC 304.125
BOD ₅	1.9	3.8		10	20	35 IAC 304.120
Total Suspended Solids	2.3	4.6		12	24	35 IAC 304.120
Oil & Grease	2.9	5.8		15	30	35 IAC 304.124

The following explain the conditions of the proposed permit:

The Special Conditions clarify pH, flow, monitoring location, temperature, total residual chlorine, and stormwater. There is also a condition that outlines the requirements for submitting discharge monitoring reports.



NPDES Permit No. IL0004375

Illinois Environmental Protection Agency

Division of Water Pollution Control

1021 North Grand Avenue East

Post Office Box 19276

Springfield, Illinois 62794-9276

NATIONAL POLLUTANT DISCHARGE ELIMINATION SYSTEM

Modified (NPDES) Permit

Expiration Date: January 31, 2012

Issue Date: January 11, 2007

Effective Date: February 1, 2007

Modification Date: April 26, 2010

Modification Date: May 5, 2010

Modification Date:

Name and Address of Permittee:

Cabot Corporation
700 East U.S. Highway 36
Tuscola, Illinois 61953

Facility Name and Address:

Cabot Corporation
700 East U.S. Highway 36
Tuscola, Illinois 61953
(Douglas County)

Discharge Number and Name:	Receiving Waters:
001 Combined Pump Seal Water, Compressor Condensate, Non-Contact Cooling Water, Stormwater, and Discharge from Internal Outfall B01	Scattering Forks Creek via Drainage District #4 Tile to Embarrass River
B01 Treated Sanitary Wastewater, Laboratory Sink Water, Compressor Condensate, and Floor Sweeper Wastewater	

In compliance with the provisions of the Illinois Environmental Protection Act, Title 35 of Ill. Adm. Code, Subtitle C and/or Subtitle D, Chapter 1, and the Clean Water Act (CWA), the above-named permittee is hereby authorized to discharge at the above location to the above-named receiving stream in accordance with the standard conditions and attachments herein.

Permittee is not authorized to discharge after the above expiration date. In order to receive authorization to discharge beyond the expiration date, the permittee shall submit the proper application as required by the Illinois Environmental Protection Agency (IEPA) not later than 180 days prior to the expiration date.

Alan Keller, P.E.
Manager, Permit Section
Division of Water Pollution Control

SAK:LRL:09020603.bah

NPDES Permit No. IL0004375

Effluent Limitations and Monitoring

1. From the modification date of this permit until the expiration date, the effluent of the following discharge(s) shall be monitored and limited at all times as follows:

PARAMETER	LOAD LIMITS lbs/day DAF (DMF)		CONCENTRATION LIMITS mg/l		SAMPLE FREQUENCY	SAMPLE TYPE
	30 DAY AVERAGE	DAILY MAXIMUM	30 DAY AVERAGE	DAILY MAXIMUM		
<u>Outfall 001</u> - Combined Pump Seal Water, Compressor Condensate, Non-Contact Cooling Water, Stormwater*, and Discharges from Internal Outfall B01 (Average Daily Flow = 0.252 MGD; DMF = 0.953 MGD)						
Flow (MGD)	See Special Condition 1.				Daily	Continuous
pH	See Special Condition 2.				1/Month	Grab
Temperature	See Special Condition 9.				1/Month	Grab
Total Suspended Solids			15	30	1/Month	Composite
Total Residual Chlorine	See Special Condition 8.			0.05	1/Month	Grab
* - See Special Condition 6.						
<u>Outfall B01</u> - Treated Sanitary Wastewater, Laboratory Sink Water, Compressor Condensate, and Floor Sweeper Wastewater (Average Daily Flow = 9,340 GPD; DMF = 0.023 MGD)						
Flow (MGD)	See Special Condition 1.				Daily	Continuous
pH	See Special Condition 2.				1/Month	Grab
BOD ₅	1.9	3.8	10	20	1/Month	Composite
Total Suspended Solids	2.3	4.6	12	24	1/Month	Composite
Oil & Grease	2.9	5.8	15	30	1/Month	Grab

NPDES Permit No. IL0004375

Special Conditions

SPECIAL CONDITION 1. Flow shall be measured in units of Million Gallons per Day (MGD) and reported as a monthly average and a daily maximum on the monthly Discharge Monitoring Report (DMR).

SPECIAL CONDITION 2. The pH shall be in the range 6.0 to 9.0. The monthly minimum and monthly maximum values shall be reported on the DMR form.

SPECIAL CONDITION 3. The Permittee shall record monitoring results on Discharge Monitoring Report (DMR) Forms using one such form for each outfall each month.

In the event that an outfall does not discharge during a monthly reporting period, the DMR Form shall be submitted with no discharge indicated.

The Permittee may choose to submit electronic DMRs (eDMRs) instead of mailing paper DMRs to the IEPA. More information, including registration information for the eDMR program, can be obtained on the IEPA website, <http://www.epa.state.il.us/water/edmr/index.html>.

The completed Discharge Monitoring Report forms shall be submitted to IEPA no later than the 15th day of the following month, unless otherwise specified by the permitting authority.

Permittees not using eDMRs shall mail Discharge Monitoring Reports with an original signature to the IEPA at the following address:

Illinois Environmental Protection Agency
Division of Water Pollution Control
1021 North Grand Avenue East
Post Office Box 19276
Springfield, Illinois 62794-9276

Attention: Compliance Assurance Section, Mail Code # 19

SPECIAL CONDITION 4. Samples taken in compliance with the effluent monitoring requirements shall be taken at a point representative of the discharge, but prior to entry into the receiving stream.

SPECIAL CONDITION 5. If an applicable effluent standard or limitation is promulgated under Sections 301(b)(2)(C) and (D), 304(b)(2), and 307(a)(2) of the Clean Water Act and that effluent standard or limitation is more stringent than any effluent limitation in the permit or controls a pollutant not limited in the NPDES Permit, the Agency shall revise or modify the permit in accordance with the more stringent standard or prohibition and shall so notify the permittee.

SPECIAL CONDITION 6.

STORM WATER POLLUTION PREVENTION PLAN (SWPPP)

- A. A storm water pollution prevention plan shall be maintained by the permittee for the storm water associated with industrial activity at this facility. The plan shall identify potential sources of pollution which may be expected to affect the quality of storm water discharges associated with the industrial activity at the facility. In addition, the plan shall describe and ensure the implementation of practices which are to be used to reduce the pollutants in storm water discharges associated with industrial activity at the facility and to assure compliance with the terms and conditions of this permit.
- B. The owner or operator of the facility shall make a copy of the plan available to the Agency at any reasonable time upon request.
- C. The permittee may be notified by the Agency at any time that the plan does not meet the requirements of this condition. After such notification, the permittee shall make changes to the plan and shall submit a written certification that the requested changes have been made. Unless otherwise provided, the permittee shall have 30 days after such notification to make the changes.
- D. The discharger shall amend the plan whenever there is a change in construction, operation, or maintenance which may affect the discharge of significant quantities of pollutants to the waters of the State or if a facility inspection required by paragraph G of this condition indicates that an amendment is needed. The plan should also be amended if the discharger is in violation of any conditions of this permit, or has not achieved the general objective of controlling pollutants in storm water discharges. Amendments to the plan shall be made within the shortest reasonable period of time, and shall be provided to the Agency for review upon request.
- E. The plan shall provide a description of potential sources which may be expected to add significant quantities of pollutants to storm water discharges, or which may result in non-storm water discharges from storm water outfalls at the facility. The plan shall include, at a minimum, the following items:

NPDES Permit No. IL0004375

Special Conditions

1. A topographic map extending one-quarter mile beyond the property boundaries of the facility, showing: the facility, surface water bodies, wells (including injection wells), seepage pits, infiltration ponds, and the discharge points where the facility's storm water discharges to a municipal storm drain system or other water body. The requirements of this paragraph may be included on the site map if appropriate.
 2. A site map showing:
 - I. The storm water conveyance and discharge structures;
 - ii. An outline of the storm water drainage areas for each storm water discharge point;
 - iii. Paved areas and buildings;
 - iv. Areas used for outdoor manufacturing, storage, or disposal of significant materials, including activities that generate significant quantities of dust or particulates.
 - v. Location of existing storm water structural control measures (dikes, coverings, detention facilities, etc.);
 - vi. Surface water locations and/or municipal storm drain locations
 - vii. Areas of existing and potential soil erosion;
 - viii. Vehicle service areas;
 - ix. Material loading, unloading, and access areas.
 3. A narrative description of the following:
 - I. The nature of the industrial activities conducted at the site, including a description of significant materials that are treated, stored or disposed of in a manner to allow exposure to storm water;
 - ii. Materials, equipment, and vehicle management practices employed to minimize contact of significant materials with storm water discharges;
 - iii. Existing structural and non-structural control measures to reduce pollutants in storm water discharges;
 - iv. Industrial storm water discharge treatment facilities;
 - v. Methods of onsite storage and disposal of significant materials;
 4. A list of the types of pollutants that have a reasonable potential to be present in storm water discharges in significant quantities.
 5. An estimate of the size of the facility in acres or square feet, and the percent of the facility that has impervious areas such as pavement or buildings.
 6. A summary of existing sampling data describing pollutants in storm water discharges.
- F. The plan shall describe the storm water management controls which will be implemented by the facility. The appropriate controls shall reflect identified existing and potential sources of pollutants at the facility. The description of the storm water management controls shall include:
1. Storm Water Pollution Prevention Personnel - Identification by job titles of the individuals who are responsible for developing, implementing, and revising the plan.
 2. Preventive Maintenance - Procedures for inspection and maintenance of storm water conveyance system devices such as oil/water separators, catch basins, etc., and inspection and testing of plant equipment and systems that could fail and result in discharges of pollutants to storm water.
 3. Good Housekeeping - Good housekeeping requires the maintenance of clean, orderly facility areas that discharge storm water. Material handling areas shall be inspected and cleaned to reduce the potential for pollutants to enter the storm water conveyance system.

NPDES Permit No. IL0004375

Special Conditions

4. Spill Prevention and Response - Identification of areas where significant materials can spill into or otherwise enter the storm water conveyance systems and their accompanying drainage points. Specific material handling procedures, storage requirements, spill clean up equipment and procedures should be identified, as appropriate. Internal notification procedures for spills of significant materials should be established.
 5. Storm Water Management Practices - Storm water management practices are practices other than those which control the source of pollutants. They include measures such as installing oil and grit separators, diverting storm water into retention basins, etc. Based on assessment of the potential of various sources to contribute pollutants, measures to remove pollutants from storm water discharge shall be implemented. In developing the plan, the following management practices shall be considered:
 - i. Containment - Storage within berms or other secondary containment devices to prevent leaks and spills from entering storm water runoff;
 - ii. Oil & Grease Separation - Oil/water separators, booms, skimmers or other methods to minimize oil contaminated storm water discharges;
 - iii. Debris & Sediment Control - Screens, booms, sediment ponds or other methods to reduce debris and sediment in storm water discharges;
 - iv. Waste Chemical Disposal - Waste chemicals such as antifreeze, degreasers and used oils shall be recycled or disposed of in an approved manner and in a way which prevents them from entering storm water discharges.
 - v. Storm Water Diversion - Storm water diversion away from materials manufacturing, storage and other areas of potential storm water contamination;
 - vi. Covered Storage or Manufacturing Areas - Covered fueling operations, materials manufacturing and storage areas to prevent contact with storm water.
 6. Sediment and Erosion Prevention - The plan shall identify areas which due to topography, activities, or other factors, have a high potential for significant soil erosion and describe measures to limit erosion.
 7. Employee Training - Employee training programs shall inform personnel at all levels of responsibility of the components and goals of the storm water pollution control plan. Training should address topics such as spill response, good housekeeping and material management practices. The plan shall identify periodic dates for such training.
 8. Inspection Procedures - Qualified plant personnel shall be identified to inspect designated equipment and plant areas. A tracking or follow-up procedure shall be used to ensure appropriate response has been taken in response to an inspection. Inspections and maintenance activities shall be documented and recorded.
- G. The permittee shall conduct an annual facility inspection to verify that all elements of the plan, including the site map, potential pollutant sources, and structural and non-structural controls to reduce pollutants in industrial storm water discharges are accurate. Observations that require a response and the appropriate response to the observation shall be retained as part of the plan. Records documenting significant observations made during the site inspection shall be submitted to the Agency in accordance with the reporting requirements of this permit.
- H. This plan should briefly describe the appropriate elements of other program requirements, including Spill Prevention Control and Countermeasures (SPCC) plans required under Section 311 of the CWA and the regulations promulgated thereunder, and Best Management Programs under 40 CFR 125.100.
- I. The plan is considered a report that shall be available to the public under Section 308(b) of the CWA. The permittee may claim portions of the plan as confidential business information, including any portion describing facility security measures.
- J. The plan shall include the signature and title of the person responsible for preparation of the plan and include the date of initial preparation and each amendment thereto.

Construction Authorization

- K. Authorization is hereby granted to construct treatment works and related equipment that may be required by the Storm Water Pollution Prevention Plan developed pursuant to this permit.

NPDES Permit No. IL0004375

Special Conditions

This Authorization is issued subject to the following condition(s).

1. If any statement or representation is found to be incorrect, this authorization may be revoked and the permittee there upon waives all rights thereunder.
2. The issuance of this authorization (a) does not release the permittee from any liability for damage to persons or property caused by or resulting from the installation, maintenance or operation of the proposed facilities; (b) does not take into consideration the structural stability of any units or part of this project; and (c) does not release the permittee from compliance with other applicable statutes of the State of Illinois, or other applicable local law, regulations or ordinances.
3. Plans and specifications of all treatment equipment being included as part of the stormwater management practice shall be included in the SWPPP.
4. Construction activities which result from treatment equipment installation, including clearing, grading and excavation activities which result in the disturbance of one acre or more of land area, are not covered by this authorization. The permittee shall contact the IEPA regarding the required permit(s).

REPORTING

- L. The facility shall submit an annual inspection report to the Illinois Environmental Protection Agency. The report shall include results of the annual facility inspection which is required by Part G of the Storm Water Pollution Prevention Plan of this permit. The report shall also include documentation of any event (spill, treatment unit malfunction, etc.) which would require an inspection, results of the inspection, and any subsequent corrective maintenance activity. The report shall be completed and signed by the authorized facility employee(s) who conducted the inspection(s).
- M. The first report shall contain information gathered during the one year time period beginning with the effective date of coverage under this permit and shall be submitted no later than 60 days after this one year period has expired. Each subsequent report shall contain the previous year's information and shall be submitted no later than one year after the previous year's report was due.
- N. Annual inspection reports shall be mailed to the following address:

Illinois Environmental Protection Agency
Bureau of Water
Compliance Assurance Section
Annual Inspection Report
1021 North Grand Avenue East
Post Office Box 19276
Springfield, Illinois 62794-9276
- O. If the facility performs inspections more frequently than required by this permit, the results shall be included as additional information in the annual report.

SPECIAL CONDITION 7. The effluent, alone or in combination with other sources, shall not cause a violation of any applicable water quality standard outlined in 35 Ill. Adm. Code 302.

SPECIAL CONDITION 8. All samples for Total Residual Chlorine shall be analyzed by an applicable method contained in 40 CFR 136, equivalent in accuracy to low-level amperometric titration. Any analytical variability of the method used shall be considered when determining the accuracy and precision of the results obtained.

NPDES Permit No. IL0004375

Special Conditions

SPECIAL CONDITION 9. This facility is not allowed any mixing with the receiving stream in order to meet applicable water quality thermal limitations. Therefore, discharge of wastewater from this facility must meet the following thermal limitations prior to discharge into the receiving stream.

- A. The discharge must not exceed the maximum limits in the following table during more than one percent of the hours in the 12 month period ending with any month. Moreover, at no time shall the water temperature of the discharge exceed the maximum limits in the following table by more than 1.7 C (3 F)

	<u>Jan.</u>	<u>Feb.</u>	<u>Mar.</u>	<u>April</u>	<u>May</u>	<u>June</u>	<u>July</u>	<u>Aug.</u>	<u>Sept.</u>	<u>Oct.</u>	<u>Nov.</u>	<u>Dec.</u>
F	60	60	60	90	90	90	90	90	90	90	90	60
C	16	16	16	32	32	32	32	32	32	32	32	16

- B. In addition, the discharge shall not cause abnormal temperature changes that may adversely affect aquatic life unless caused by natural conditions.
- C. The discharge shall not cause the maximum temperature rise above natural temperatures shall not exceed 2.8 C (5 F).
- D. The monthly maximum value shall be reported on the DMR form.