

MAHOMET AQUIFER TASK FORCE – GROUNDWATER ASSESSMENT AND PROTECTION TOOLS

Rick Cobb, P.G.

Deputy Division Manager, Division of Public Water Supplies
and Manager Groundwater Section, Bureau of Water

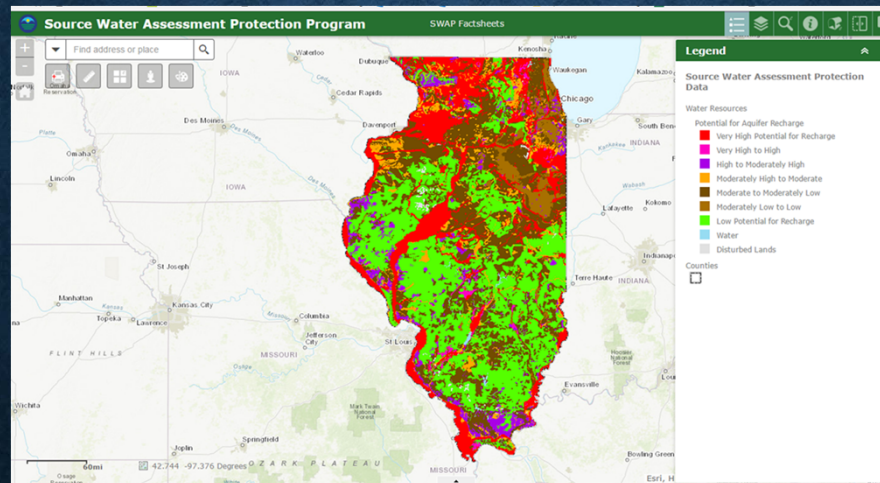


Illinois Environmental Protection Agency

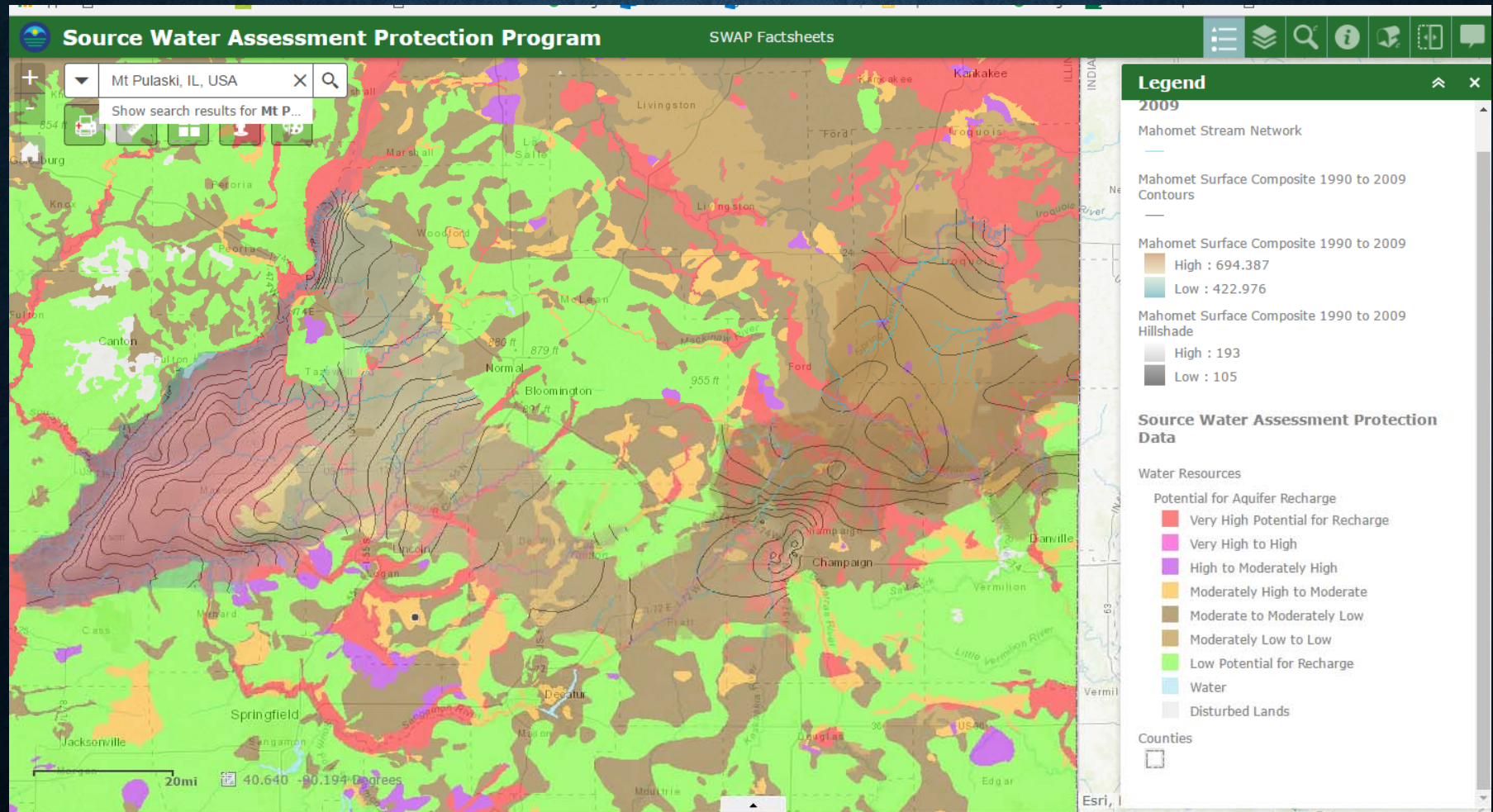
2/23/2018

I. PRIORITIZATION OF RESOURCE GROUNDWATER

Illinois Regional Potential for Aquifer Recharge Map (415 ILCS 5/17.2)



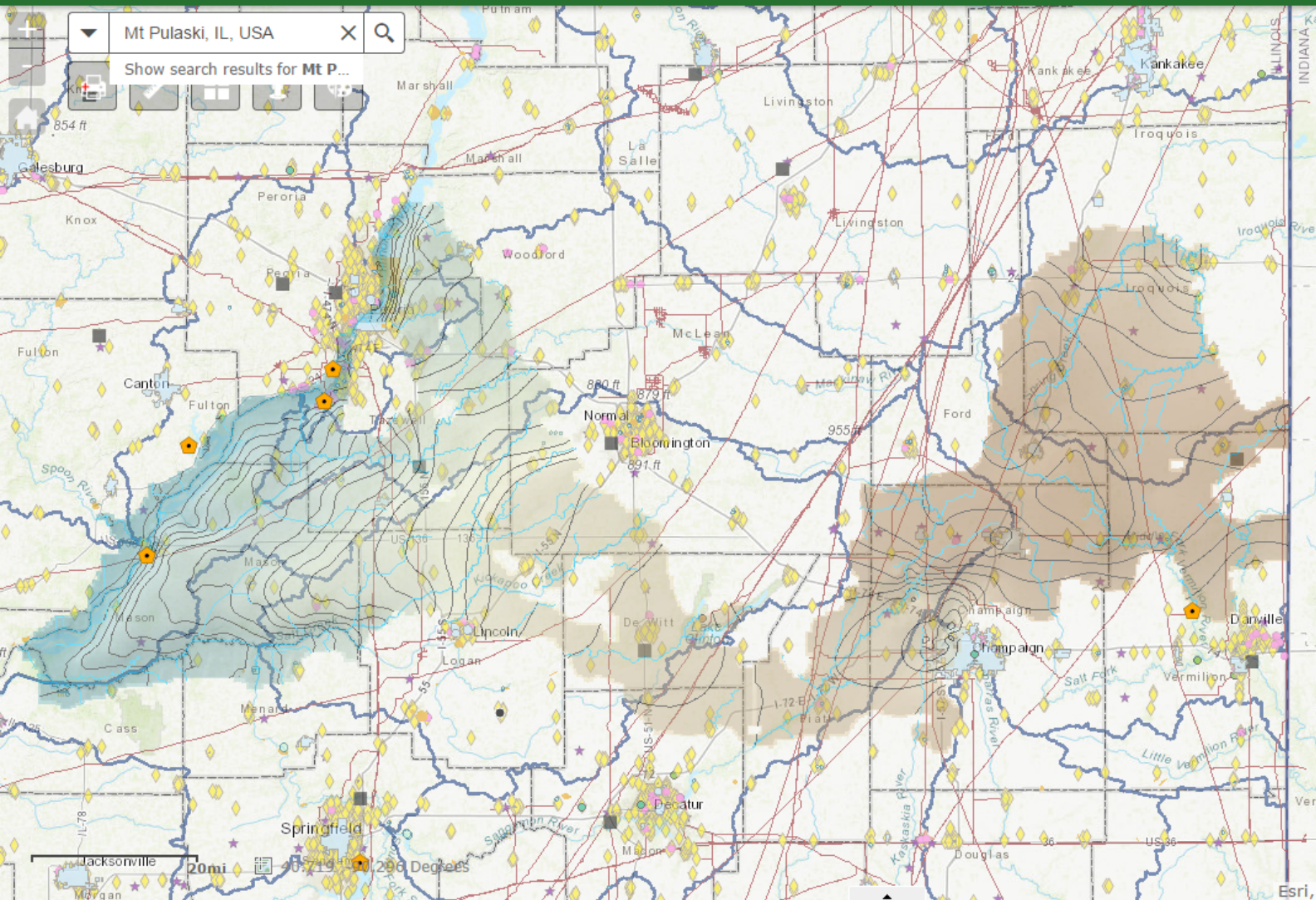
POTENTIAL FOR AQUIFER RECHARGE MAHOMET AQUIFER



II. EXISTING POTENTIAL CONTAMINATION SOURCES

POTENTIAL CONTAMINATION SOURCES

- Electric Coal Fired Power Plants – Ash Impoundments
- Center-pivot irrigation wells
- Active landfills/historical landfills
- Toxic Release Inventory Sites (TRI)
- Leaking Underground Storage Tanks (LUST)
- Resource Conservation and Recovery Sites
- Agricultural cropland
- Voluntary Site Remediation
- Restricted Use Groundwater Ordinances
- Comprehensive Environmental Response Compensation and Recovery Act (CERCLA) Sites
- Nuclear Power Generating Plants
- Oil and Gas Pipelines
- Oil and Gas Storage and Production
- Confined Animal Feeding Operations

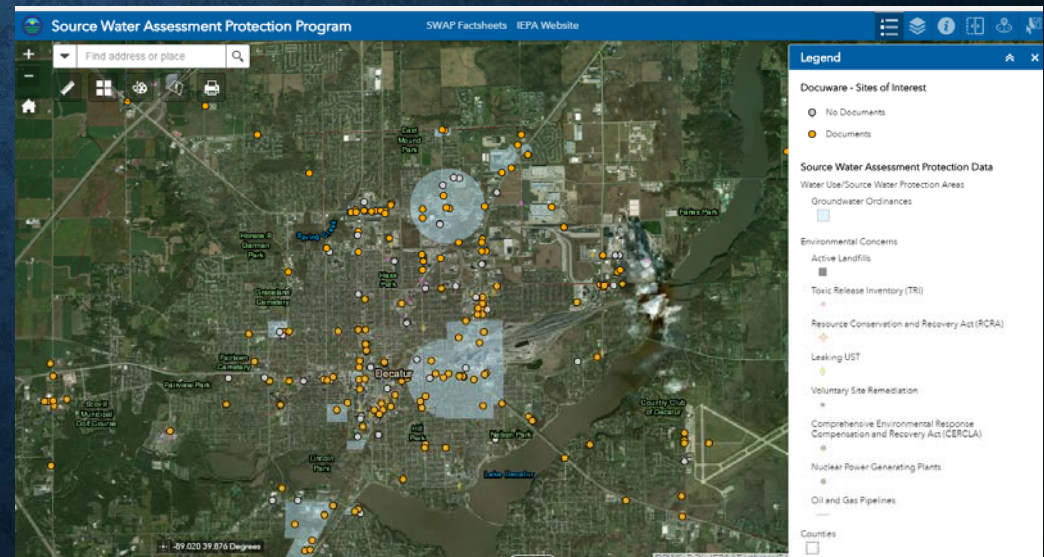
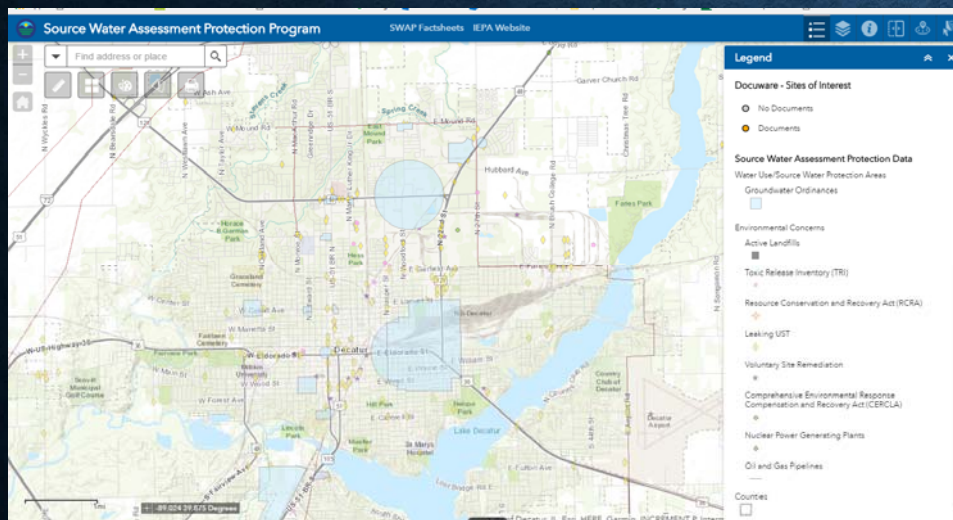


Legend

- Illinois EPA Site Related Right to Know
- Groundwater Ordinances
- Environmental Concerns
 - Active Landfills
 - Toxic Release Inventory (TRI)
 - Resource Conservation and Recovery Act (RCRA)
 - Leaking UST
 - Voluntary Site Remediation
 - Comprehensive Environmental Response Compensation and Recovery Act (CERCLA)
 - Nuclear Power Generating Plants
 - Oil and Gas Pipelines
- Water Resources
 - NRCS 8-Digit HUC
 - Counties

PUBLIC GIS WEB SERVICE

[HTTP://WWW.EPA.ILLINOIS.GOV/TOPICS/COMMUNITY-RELATIONS/SITES/MAHOMET-AQUIFER-TASK-FORCE/INDEX](http://www.epa.illinois.gov/topics/community-relations/sites/mahomet-aquifer-task-force/index)



III. SOURCES OF KNOWN GROUNDWATER CONTAMINATION

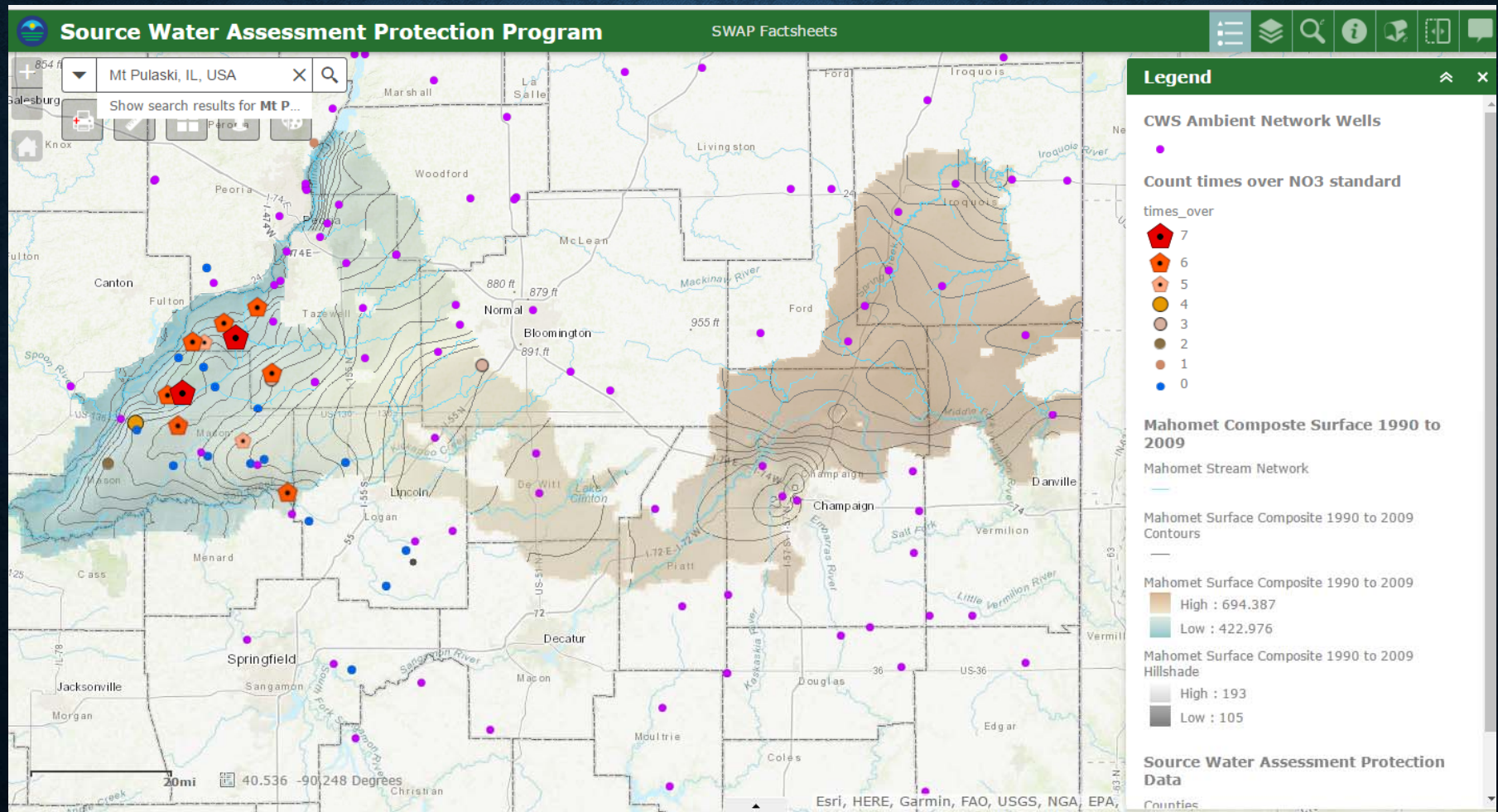
GROUNDWATER MONITORING

- Illinois Groundwater Protection Act
 - 415 ILCS 5/13.1 – Agency State Wide Groundwater Monitoring Network
- Illinois Groundwater Protection Act
 - 415 ILCS 55/7(b)(1) – Long-term groundwater monitoring network
- Interagency Coordinating Committee on Groundwater (ICCG) 415 ILCS 55/4
- Governor Appointed Groundwater Advisory Council (GAC) 415 ILCS 55/5

GROUNDWATER MONITORING - FOCUS ON THE MBV

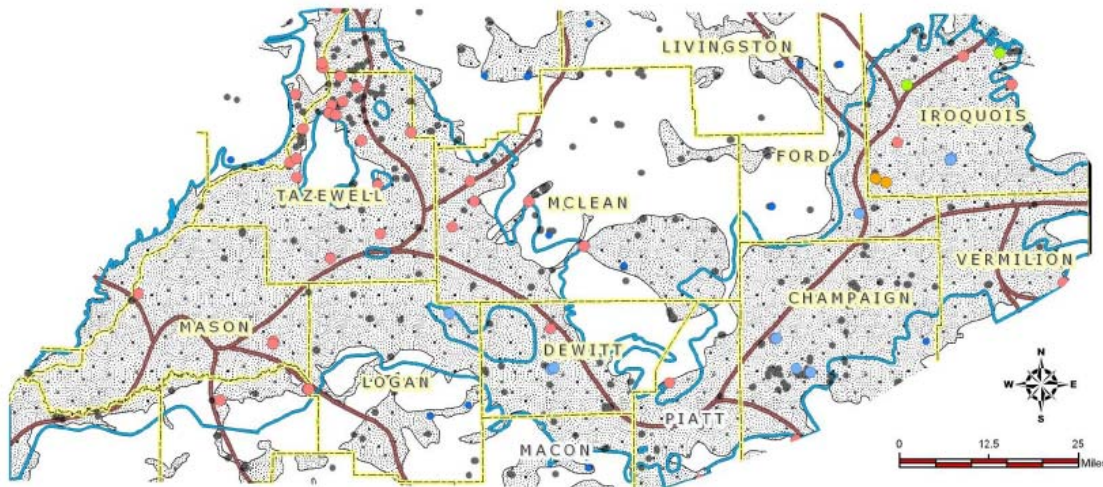
[http://www.epa.illinois.gov/topics/community-
relations/sites/mahomet-aquifer-task-force/index](http://www.epa.illinois.gov/topics/community-relations/sites/mahomet-aquifer-task-force/index)

AMBIENT NETWORK OF GROUNDWATER MONITORING WELLS

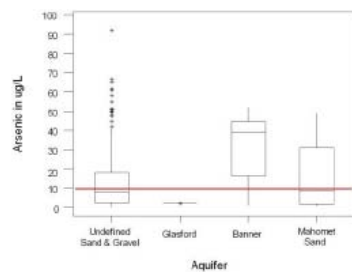


EXAMPLE OF RESULTS FOR ONE CONTAMINANT BY AQUIFER

CWS Network Wells in the Mahomet - Teays Aquifer

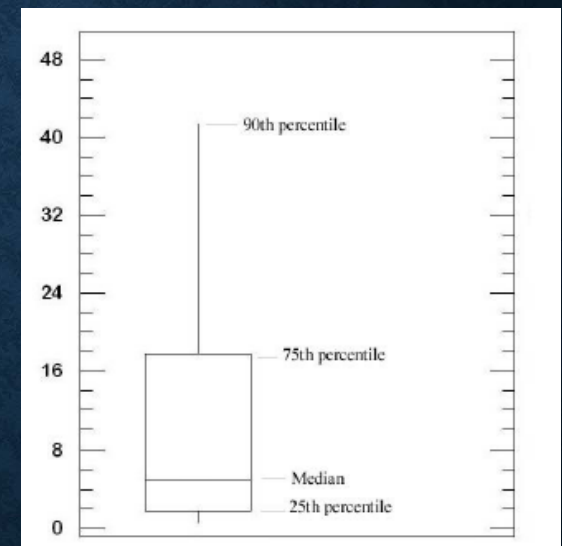


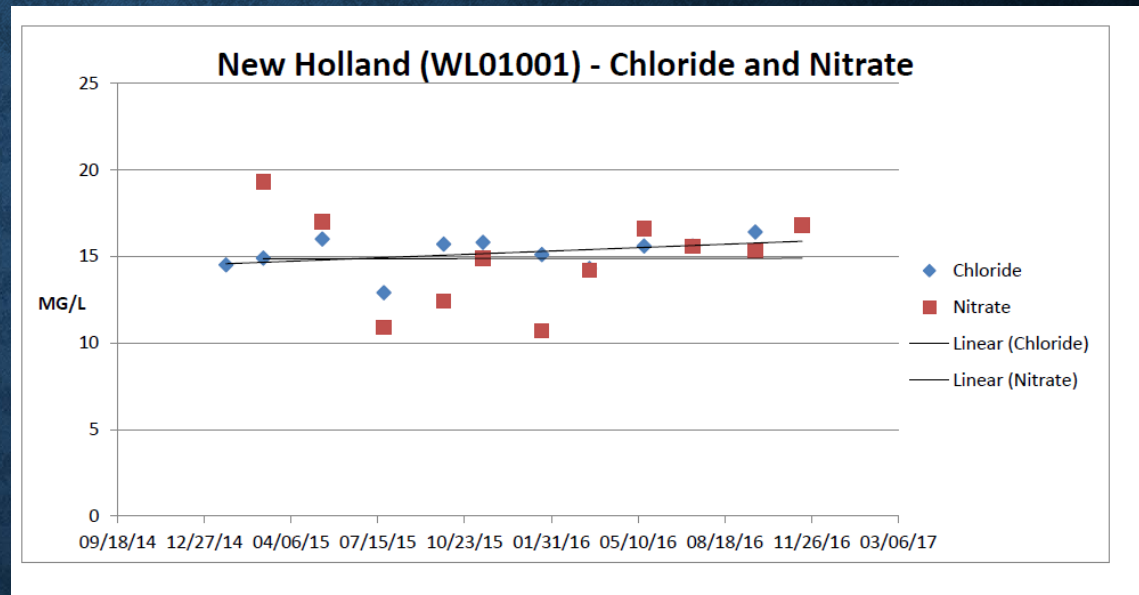
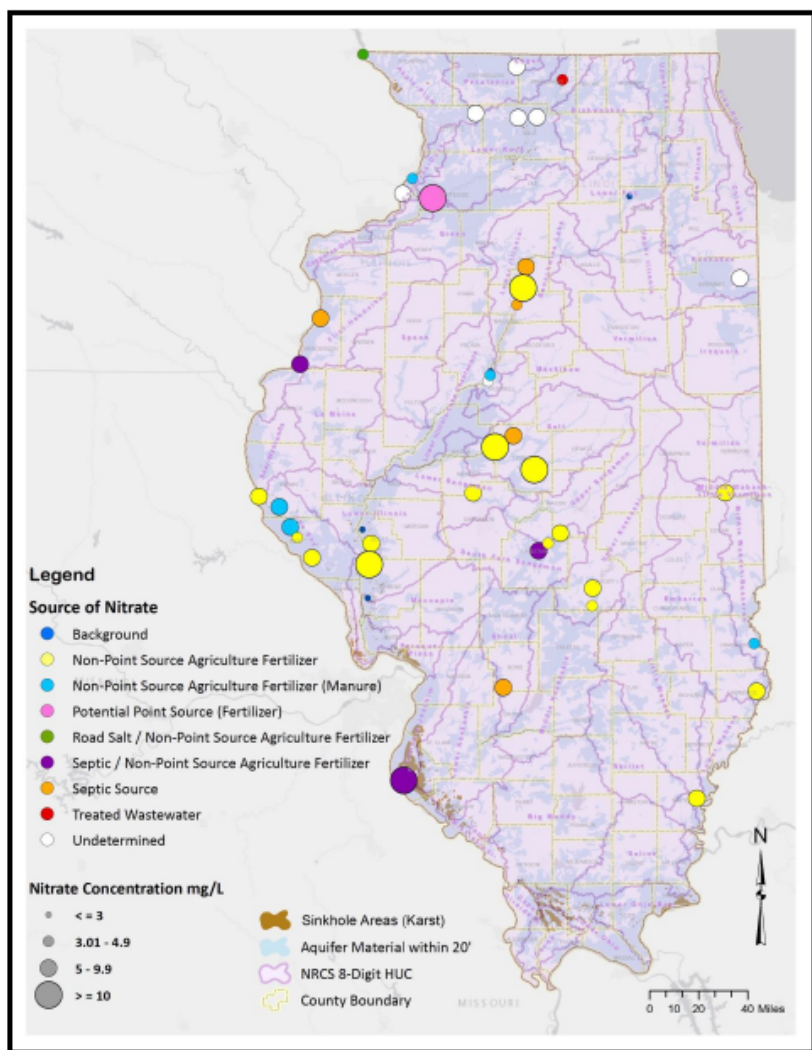
Concentrations of Arsenic in the Mahomet - Teays by Aquifer



CWS Network Wells in the Mahomet-Teays

- Undefined Sand & Gravel
- Glasford Formation
- Banner Formation
- Mahomet Sand
- Ambient Wells
- CWS Wells
- Mahomet-Teays Boundary
- Bedrock Valleys
- County Boundaries





ACCESSING GROUNDWATER AND DRINKING DATA OVER THE INTERNET

- Drinking Water Watch
- Ambient monitoring network wells
- CWS wells
- Linked to GIS Web Service

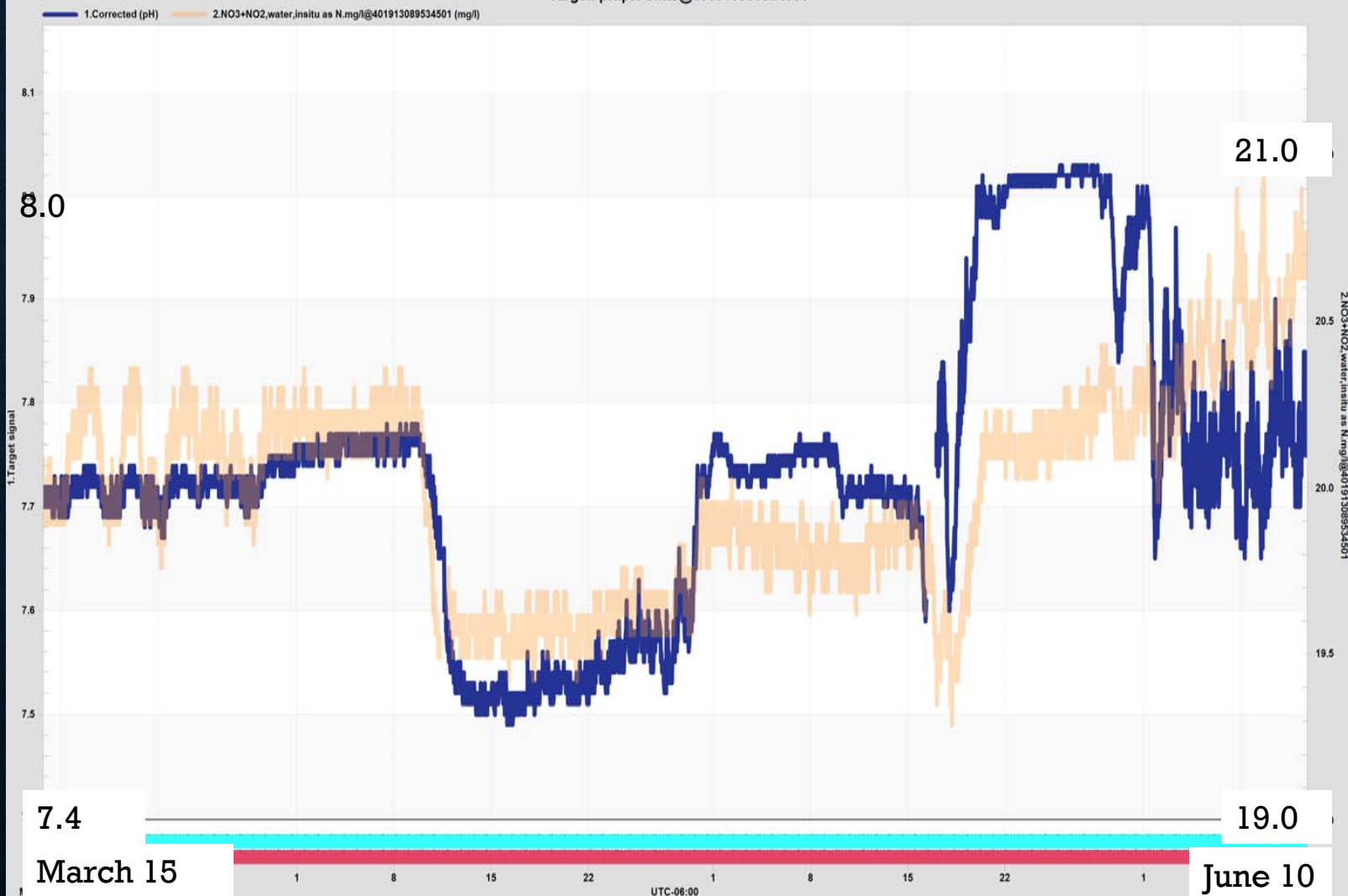
Real-Time Nitrate Monitoring in Groundwater in Havana, Illinois



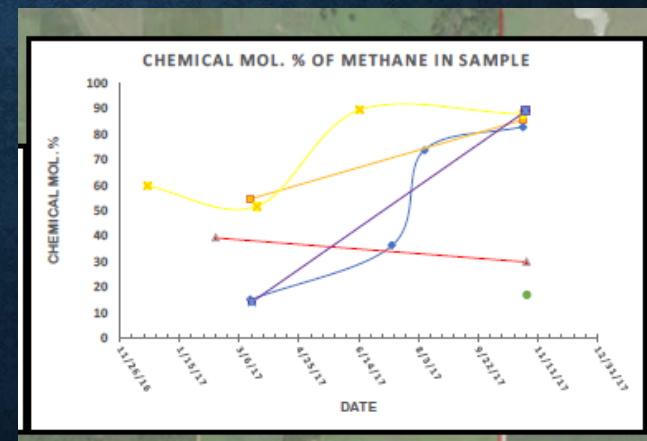
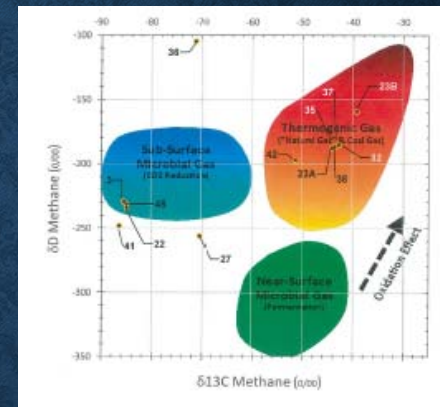
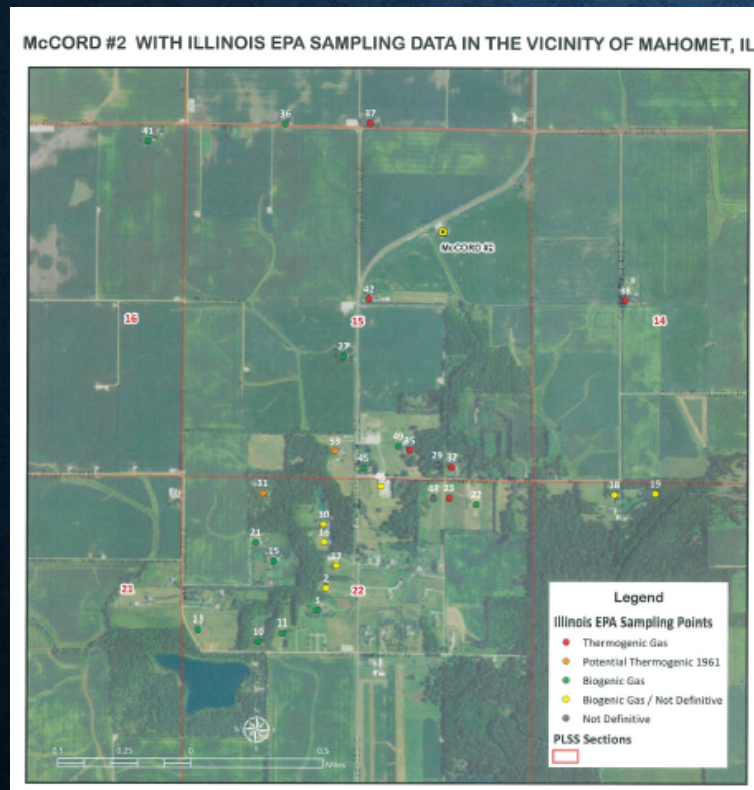
pH and nitrate – March thru June



Target: pH.pH Units@401913089534501



THERMOGENIC SOURCE OF NATURAL GAS



IV. PUTTING ALL OF THE INFORMATION TOGETHER FOR PUBLIC WATER SUPPLIES TO PROTECT THEIR SOURCE WATER

- Importance of source water
- Source of supply
- Well data
- Source water quality
- Finished water quality
- Potential contamination sources
- Susceptibility to contamination
- Source water protection efforts

SOURCE WATER ASSESSMENT FACT SHEETS

Illinois Environmental
Protection Agency

Source Water Assessment Program

FACT SHEET

New Holland

Logan

Prepared in cooperation with the U.S. Geological Survey.

Information and data used in the preparation of this Fact Sheet are provided by the Illinois EPA and are subject to revision.

Illinois EPA PWS Number: IL1070450

WATER PERCENTAGES:

Surface Water%	Surface Water Purchase%	Ground Water%	Ground Water Purchase%	Ground Water UDI%	Ground Water UDI Purchase%
0	0	100	0	0	0

IMPORTANCE OF SOURCE WATER:

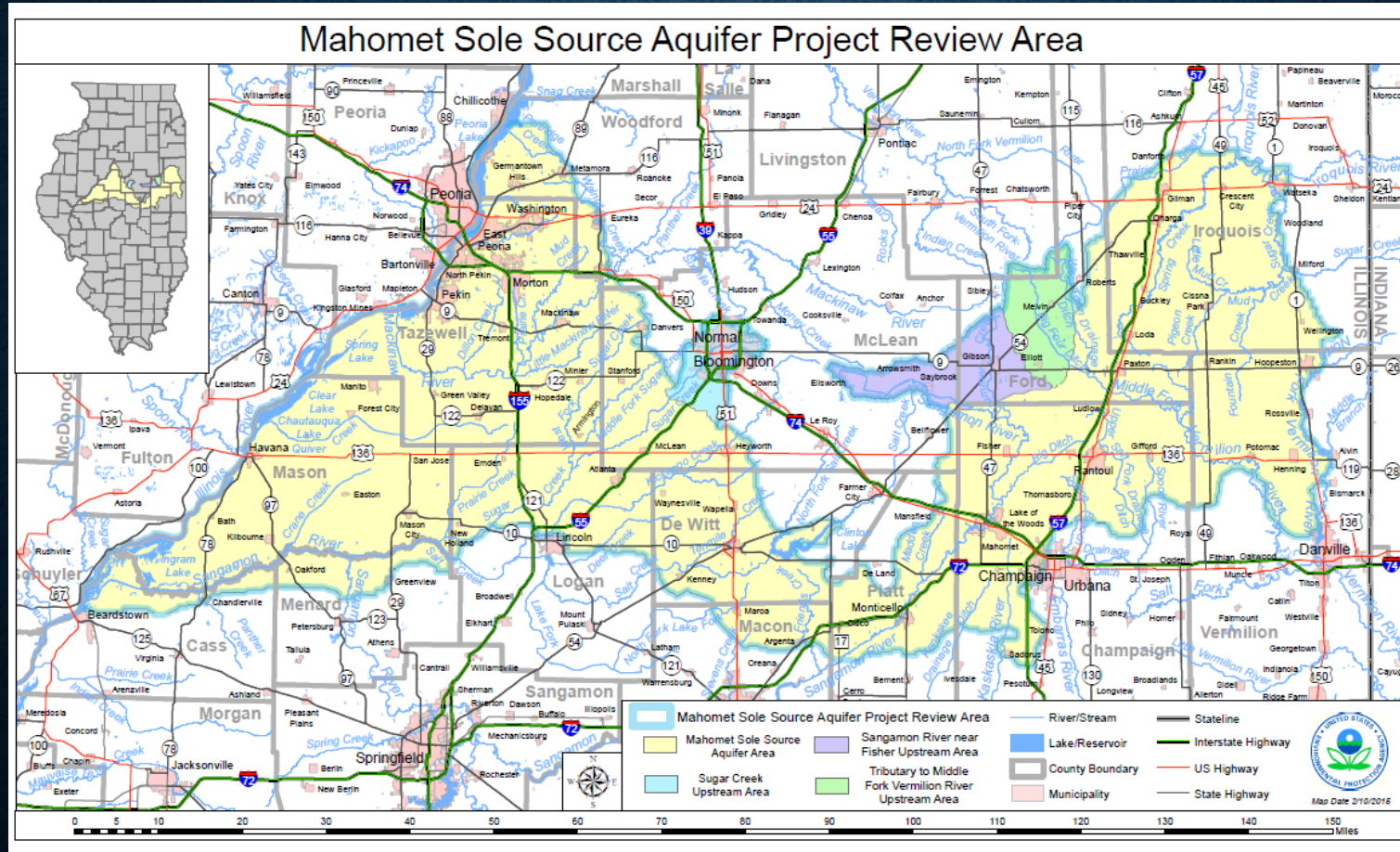
The Village of New Holland (Facility Number 1070450) obtains its water from four (4) active community water supply wells (CWS). Wells #1, 2, 3, and 4 (Illinois EPA #50212, 50213, 50214, and 01001 respectively) supply an average of 20,000 gallons per day (gpd) to 155 connections and a daily population of 333.

SOURCE OF WATER SUPPLY:

As noted above, the Village of New Holland utilizes four (4) active CWS wells which are located at the northern and southern edge of the village limits. Wells #1, 2, 3, and 4 operate individually on average at approximately 5 to 75 gallons per minute (gpm) and are 72, 74, 155, and 170 in depth, respectively. The active wells were installed between 1908 and

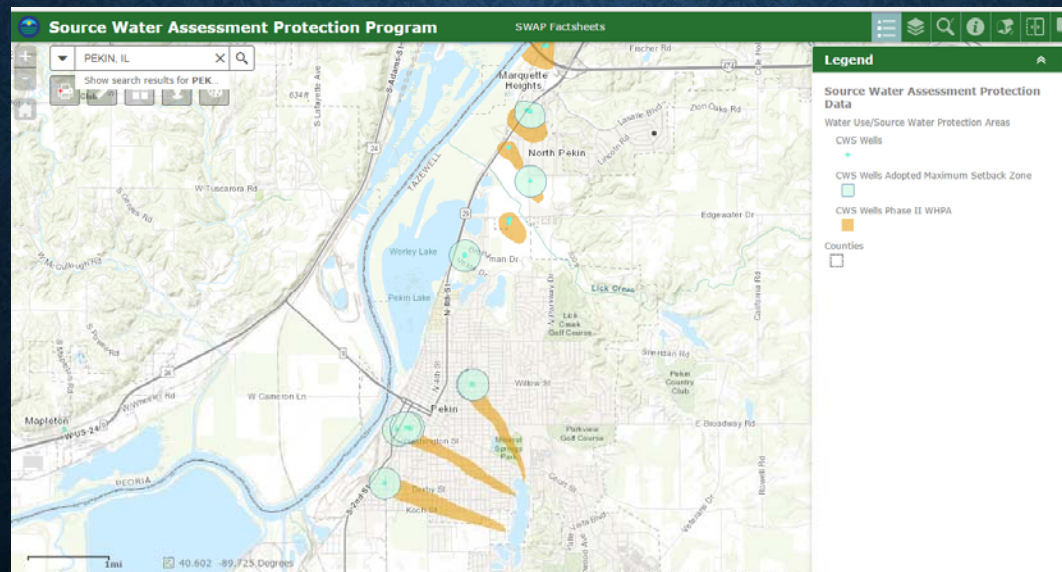
**V. EXISTING LAWS AND REGULATIONS THAT
ARE AVAILABLE**

MAHOMET SOLE SOURCE AQUIFER (SSA)



LOCAL WELLHEAD PROTECTION EFFORTS

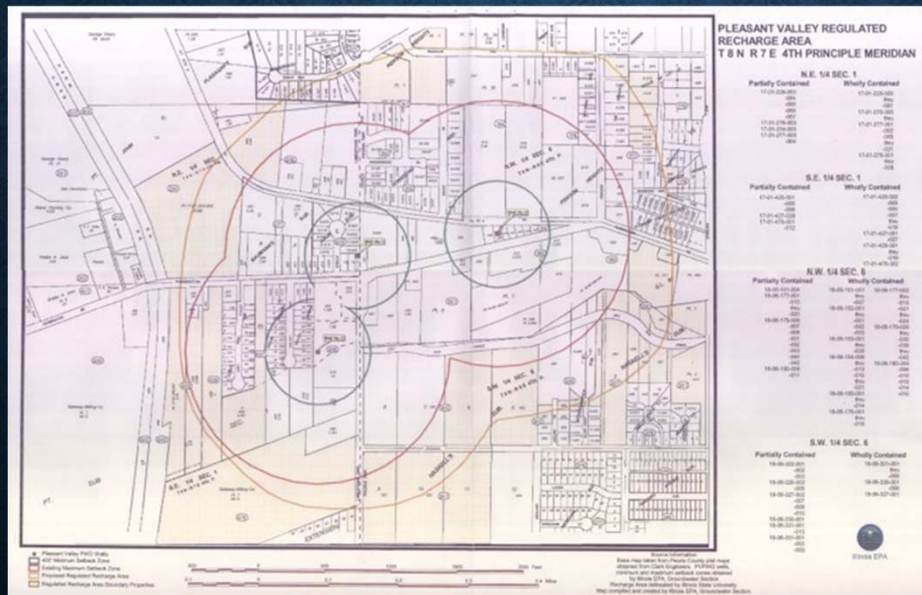
- Central Region Groundwater Protection Committee's web page at;
- Tazewell County Groundwater Protection Ordinance and the City of Pekin's Overlay Wellhead Ordinance at:
- <http://www.epa.illinois.gov/topics/community-relations/sites/mahomet-aquifer-task-force/index>



REGULATED RECHARGE AREA AUTHORITY

415 ILCS 5/17.3

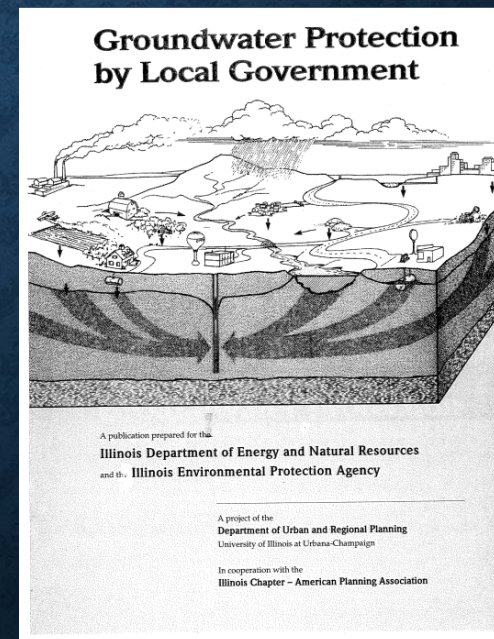
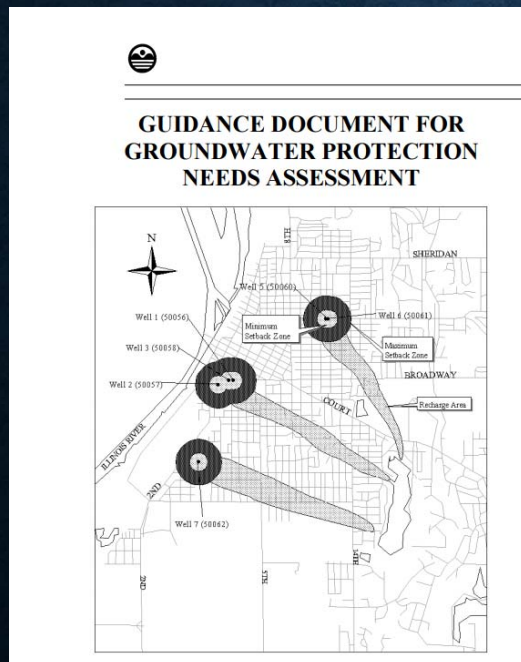
- <http://www.epa.illinois.gov/topics/community-relations/sites/mahomet-aquifer-task-force/index>
- 35 Ill. Adm. Code 617
<http://www.ipcb.state.il.us/SLR/IPCBandIEPAEnvironmentalRegulations-Title35.aspx>



GUIDANCE DOCUMENTS

[HTTP://WWW.EPA.ILLINOIS.GOV/TOPICS/COMMUNITY-RELATIONS/SITES/MAHOMET-AQUIFER-TASK-FORCE/INDEX](http://www.epa.illinois.gov/topics/community-relations/sites/mahomet-aquifer-task-force/index)

- *Groundwater Protection by Local Government*
- *Guidance Document for Groundwater Protection Needs Assessment*



**VI. EVALUATION OF THE EXTENT TO WHICH
LOCAL, STATE, OR FEDERAL CONTROLS
DIRECTLY OR INDIRECTLY, PROVIDE SOME
MEASURE OF GROUNDWATER PROTECTION**