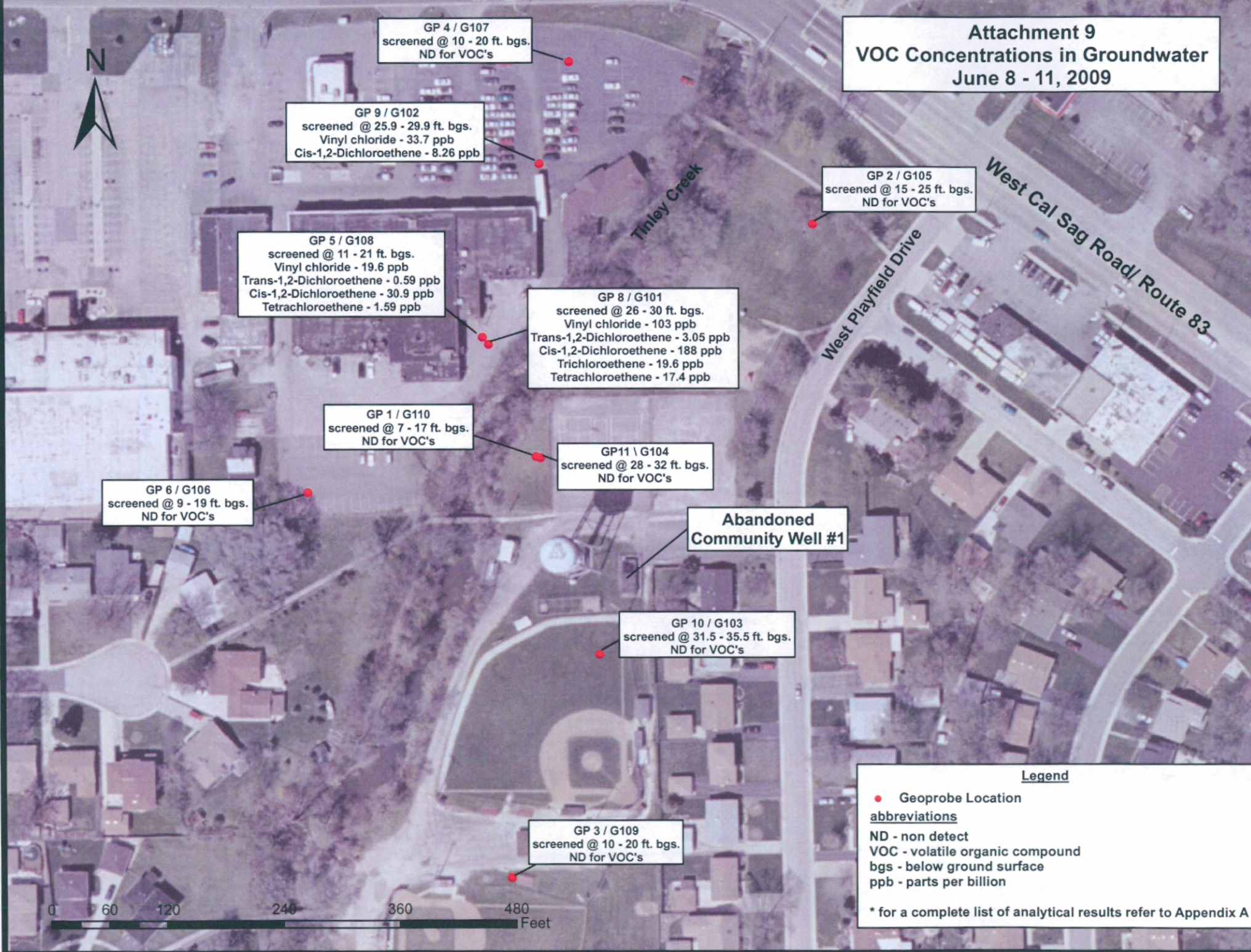


Attachment 9
VOC Concentrations in Groundwater
June 8 - 11, 2009



GP 4 / G107
 screened @ 10 - 20 ft. bgs.
 ND for VOC's

GP 9 / G102
 screened @ 25.9 - 29.9 ft. bgs.
 Vinyl chloride - 33.7 ppb
 Cis-1,2-Dichloroethene - 8.26 ppb

GP 5 / G108
 screened @ 11 - 21 ft. bgs.
 Vinyl chloride - 19.6 ppb
 Trans-1,2-Dichloroethene - 0.59 ppb
 Cis-1,2-Dichloroethene - 30.9 ppb
 Tetrachloroethene - 1.59 ppb

GP 8 / G101
 screened @ 26 - 30 ft. bgs.
 Vinyl chloride - 103 ppb
 Trans-1,2-Dichloroethene - 3.05 ppb
 Cis-1,2-Dichloroethene - 188 ppb
 Trichloroethene - 19.6 ppb
 Tetrachloroethene - 17.4 ppb

GP 2 / G105
 screened @ 15 - 25 ft. bgs.
 ND for VOC's

GP 1 / G110
 screened @ 7 - 17 ft. bgs.
 ND for VOC's

GP 11 / G104
 screened @ 28 - 32 ft. bgs.
 ND for VOC's

GP 6 / G106
 screened @ 9 - 19 ft. bgs.
 ND for VOC's

**Abandoned
 Community Well #1**

GP 10 / G103
 screened @ 31.5 - 35.5 ft. bgs.
 ND for VOC's

GP 3 / G109
 screened @ 10 - 20 ft. bgs.
 ND for VOC's

Legend

- Geoprobe Location

abbreviations
 ND - non detect
 VOC - volatile organic compound
 bgs - below ground surface
 ppb - parts per billion

* for a complete list of analytical results refer to Appendix A

0 60 120 240 360 480 Feet